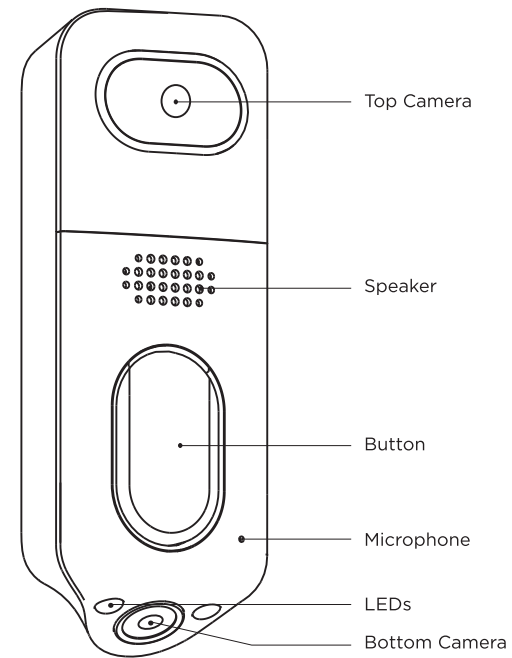
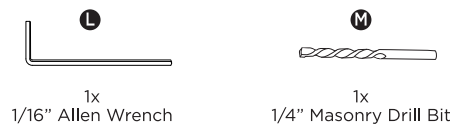
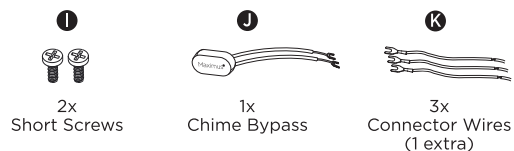
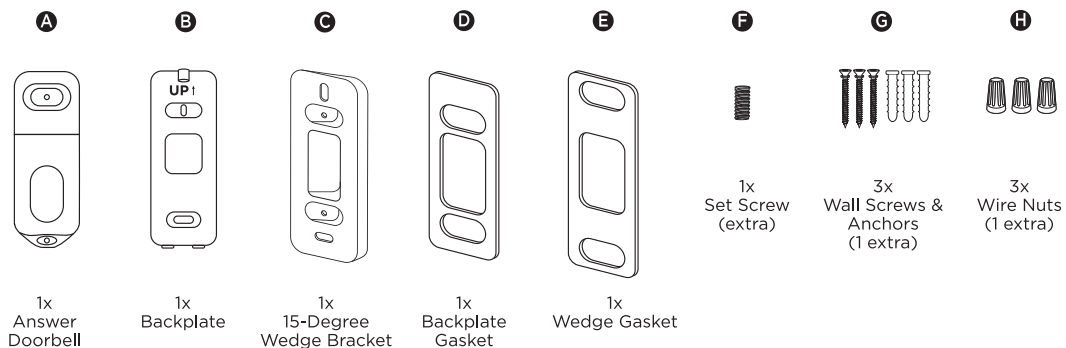


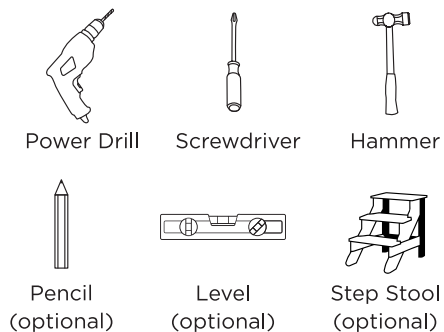
answer®
DualCam
Video Doorbell
Installation Guide



What's in the Box



Tools Needed (Not Included):



Industry Canada (IC) Compliance

This device complies with Industry Canada licence-exempt RSS standard(s). Operation is subject to the following two conditions:

- (1) This device may not cause interference, and
- (2) This device must accept any interference, including interference that may cause undesired operation of the device.

Le présent appareil est conforme aux CNR d'Industrie Canada applicables aux appareils radio exempts de licence. L'exploitation est autorisée aux deux conditions suivantes:

- (1) l'appareil ne doit pas produire de brouillage, et
- (2) l'utilisateur de l'appareil doit accepter tout brouillage radioélectrique subi, même si le

brouillage est susceptible d'en compromettre le fonctionnement.

This equipment complies with IC RSS-102 radiation exposure limits set forth for an uncontrolled environment. This equipment should be installed and operated with minimum distance 20cm between the radiator and your body.

ce matériel est conforme aux limites de dose d'exposition aux rayonnements, IC RSS-102 énoncée dans un autre environnement. cette équipement devrait être installé et exploité avec distance minimale de 20 entre le radiateur et votre corps.

Safety and Regulatory Information

⚠ WARNING

- Disconnect power at fuse or circuit breaker before installing or servicing.
- Risk of fire or electric shock. Installation requires knowledge of electrical systems. If not qualified, do not attempt to install. Contact a qualified electrician.
- No user serviceable parts inside. To avoid electric shock, do not disassemble product.
- To prevent wiring damage or abrasion, do not expose wiring to edges of sheet metal or other sharp objects.

Need Help?

For more information, check out our Help Center:

[MaximusLighting.com/support](https://www.maximuslighting.com/support)

Phone: (855) 869-0304

Email: support@maximuslighting.com

OR

[help.getkuna.com](https://www.help.getkuna.com)

Phone: (855) 275-0412

Email: support@getkuna.com

FCC Notice

Warning: Changes or modifications to this unit not expressly approved by the party responsible for compliance could void the user's authority to operate the equipment.

NOTE: This equipment has been tested and found to comply with the limits for a Class B digital device, pursuant to Part 15 of the FCC Rules. These limits are designed to provide reasonable protection against harmful interference in a residential installation. This equipment generates, uses and can radiate radio frequency energy and, if not installed and used in accordance with the instructions, may cause harmful interference to radio communications.

However, there is no guarantee that interference will not occur in a particular installation. If this equipment does cause harmful interference to radio or television reception, which can be determined by turning the equipment off and on, the user is

encouraged to try to correct the interference by one or more of the following measures:

- Reorient or relocate the receiving antenna.
- Increase the separation between the equipment and receiver.
- Connect the equipment into an outlet on a circuit different from that to which the receiver is connected.
- Consult the dealer or an experienced radio/TV technician for help.

This equipment complies with FCC radiation exposure limits set forth for an uncontrolled environment. This equipment should be installed and operated with minimum distance 20cm between the radiator and your body. This transmitter must not be co-located or operating in conjunction with any other antenna or transmitter.

This device complies with Part 15 of the FCC Rules. Operation is subject to the following two conditions:

- (1) this device may not cause harmful interference, and
- (2) this device must accept any interference received, including interference that may cause undesired operation.

Please recycle Answer DualCam Video Doorbell's packaging.



Chime Bypass Installation

Note: If you have another chime bypass installed on your home's chime, replace it with the included Maximus Chime Bypass.

Step 1:

Turn off the circuit breaker or fuse that your doorbell is connected to, then verify that the power has been turned off by pressing the doorbell button—you should not hear your doorbell chime.

Step 2:

Locate the chime bypass included in your Answer Doorbell installation kit.

Step 3:

Locate your home's chime box and remove the cover.

Step 4:

Locate the "TRANS" and "FRONT" connections within your box. (if installing at a front door)

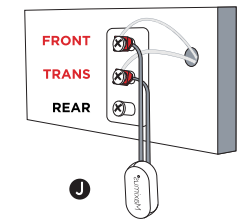
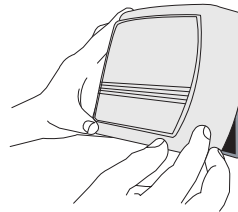
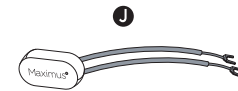
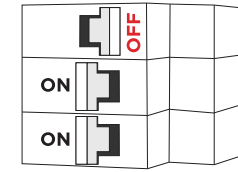
Step 5:

Connect the chime bypass to the "TRANS" and "FRONT" connections. (orientation and color does not matter)

Securely mount the chime bypass in place using the adhesive strip. It may be secured inside or outside of chime box depending on your setup.

Step 6:

Replace the cover.



Doorbell Installation

Note: You should have disconnected the power for your doorbell circuit when you installed the chime bypass. Please ensure that the power is still off before beginning the doorbell installation.

Step 1 (Optional):

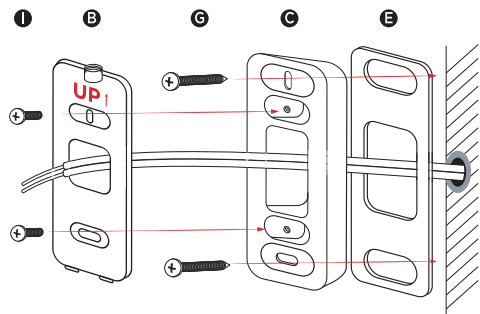
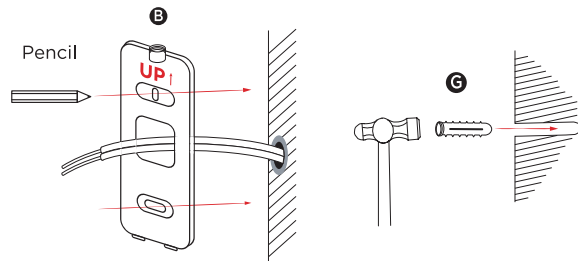
If you would like to use a wedge to change the viewing angle, follow Step 2 and Step 3 using the wedge and wedge gasket instead of the backplate and backplate gasket. After installing the wedge, use the short screws to attach the backplate to the wedge.

Note: the wedge can be flipped to angle your camera to the left or right. Make sure you install the wedge in the orientation that works best for you.

Step 2:

Hold the backplate up against your wall such that the existing wires go through the large hole and mark the mounting screw areas.

- For stucco, brick, or concrete: drill pilot holes using the supplied drill bit and then push/hammer in plastic anchors for screws.
- For wood or siding: install screws directly (do **NOT** use the supplied drill bit - it is meant for the anchors). We highly recommend drilling a pilot hole before installing the screws if not using the anchors.



Step 3:

Attach the provided backplate gasket to the backplate. Install the backplate with the 2 wall screws to the location as shown.

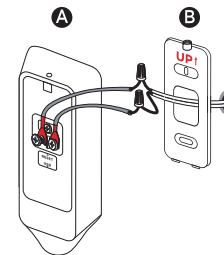
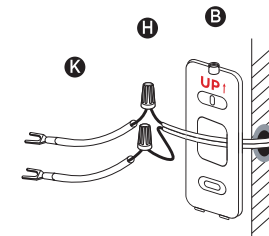
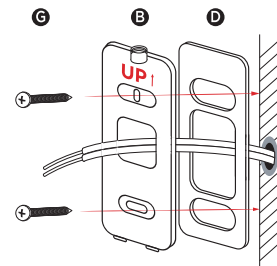
Note: be sure that the backplate is facing the correct direction with the "Up" label visible and arrow pointing up.

Step 4:

Use the provided wire nuts to attach the connector wires to your existing doorbell wiring. Wire color is interchangeable - it does not matter which way they are connected.

Step 5:

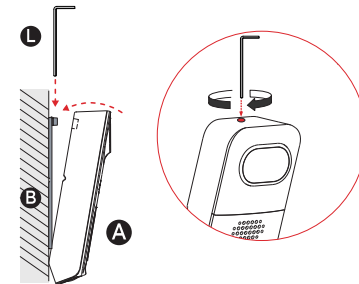
Loosen the screws on the back of your doorbell. Connect the connector wire spades (or your existing wires) to the screws on your Answer Doorbell. It doesn't matter which wire you connect to which screw - just make sure the wires aren't touching one another and are securely connected.



Step 6:

Feed the wires and wire nuts back into the wall and then mount the doorbell by sliding the bottom of the doorbell onto the backplate and pushing the top into place. Note: a little upward pressure may be required to attach the doorbell to the backplate.

Use the provided Allen wrench to tighten the preinstalled set screw to secure the doorbell in place through the top screw hole.



Step 7:

Restore power to your Answer Doorbell circuit.

Step 8:

Download free Kuna App from Apple App Store or Google Play Store. Follow in-app instructions to set up your doorbell.