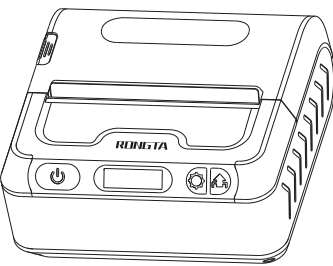


# RPP322 | Mobile Label Printer

## Quick Installation Guide



V1.0      www.rongtatech.com

### 328 mm

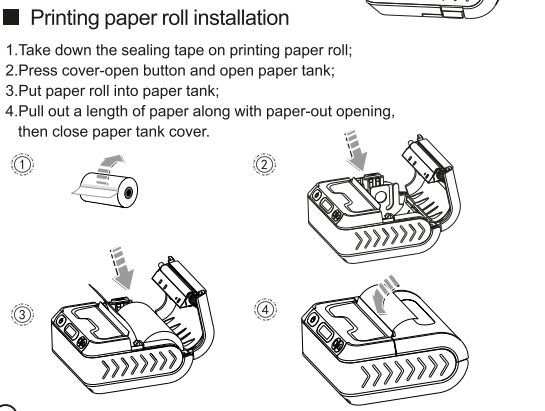
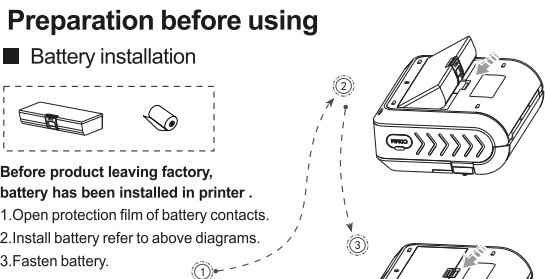
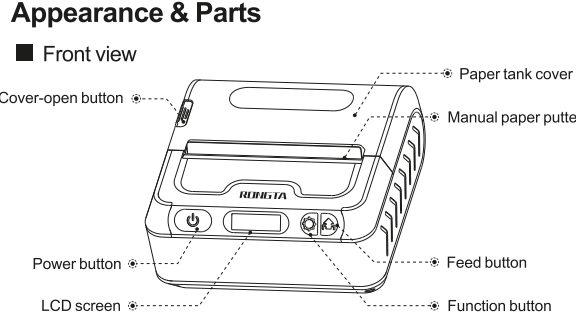
### 120 mm

### 82 mm

### Packing List

■ Standard Accessories  
If any items are damaged or missing, please contact the supplier.

Printer	Battery	USB cable
Power adapter	Quick installation guide	

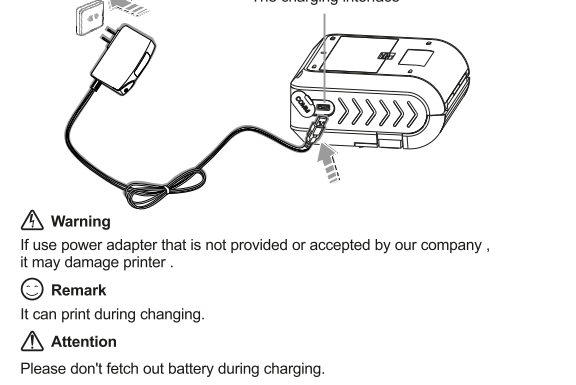


■ Remark:

- Paper specification used by printer is: paper width 80mm (single side adjustable), paper roll diameter 43mm.
- Pay attention to direction of paper roll. If it's reversed, it may cause empty printing or non-process paper-feeding.

■ Battery charge

**Standby charge**  
Plug power adapter into power outlet and plug USB interface into the printer?  
Charging Port: AC :110V-240V~ 50/60Hz.  
Charging: Battery indication symbol battery status bar scrolling displays.  
Charging complete: The icon indicate the battery is fully charged, the buzzer will the sound alarm.



■ Use function

■ Basic features

Power on: Keep pressing power button for 3 seconds.  
Power off: Keep pressing printer power button during starting up, then printer closes.  
Paper feeding: Press the feed button(Under the continuation paper model then paper feed for 5mm, press paper feed button in label / black label model, paper feeding to label gap or black label).  
Sleep wake: When printer start up if there is no pressing operation or data transmission within 5 seconds, printer will enter into dormant status automatically. If press power button will wake the printer (The printer will wake up automatically when it receives data).

### Use function

■ Setting

Enter setting interface: Long press set button to enter selection interface under on status (non-dormant status).  
Press set button: Enter to set next selection.  
Press paper-feeding button: Change option parameter.  
Press power button: Confirm set.

	Print Info	Press power key to print self testing page
	0-4	Set wide range resolution (Coarse adjustment)
	0-4	Setting small range resolution (fine adjustment)
	0-4	print speed Setting
	Chinese/English	Language Setting
	Open/Close	Beeping on/off
	Gap/Mark/None	Pater Types Setting
	Open/Close	Set whether to turn on the paper
	Open/Close	Set whether to turn on the paper
	10/30/60/99	Set the screen saver display
	1-5	Set automatic shutdown

3'Mobile Label Printer has both models Bluetooth 4.0 (SPP+BLE), it can communicate with iPhone, iPad, Android. The effective communication distance is less than or equal to 10 meters. It support for AirSync protocol and can use Bluetooth function on the Wechat platform.

### Fault diagnosis

Fault phenomenon	Fault reason	Solution
Printer only feeds paper during printing, and has no printing data.	Printing paper is installed upside down.	Change printing paper installation direction.
Printer prints blurry	Printer movement is polluted due to long-term not being cleaned. Printing paper coloration is not good.	Movement needs to be cleaned. Please set higher blackness or use printing paper with better coloration.
Printed receipt characters become fuzzy within several months or even several weeks.	Printing paper quality is not good. Preservation temperature of receipt is too high.	Please use thermal printing paper with long retention period. Please preserve under normal temperature (about 20 °C)

### Maintenance

■ Printer daily maintenance

- Clean printer exterior and paper tank: please scrub printer surface and paper tank interior slightly with wringed wet cloth. Pay attention to that wet cloth must be wringed out completely.
- Clean printer mechanism: printer mechanism must be cleaned regularly, especially when printing quality decrease. Cleaning method is as follows: scrub printer mechanism surface spots and residual gum on label paper with degreasing cotton dipping with anhydrous alcohol until scrubbed clearly.
- If discover there is water in printer interior, please close printer and fetch out battery immediately and let printer dry naturally.
- If printer won't use for long-time, please fetch out battery and preserve it separately.

■ Printing paper usage and preservation


- New purchased printing paper shall avoid direct sunlight or preservation in high-temperature locations. Please don't tear packaging paper during preservation.
- The receipt after printing shall be preserved under condition of normal temperature (about 20°C) and lucifuge. This can prolong receipt preservation period effectively.
- If users need to preserve receipt for a long period, please select long-acting thermosensitive printing papers.

### Product Technical Indicators

Project	Printing parameter	
Printing method	Thermal line	
Printing paper width	80mm	
paper roll diameter	Max φ43mm	
Printing speed	Max 90mm/s	
Resolution ration	203dpi	
Storage	DDR	8MB
	FLASH	4MB
Interface (Optional)	USB	Micro USB
	Bluetooth	BT4.0+BLE
Battery	7.4V 2100mAh	
Gross Weight	About 500g (including battery)	
Paper type	Support for continuous paper and label paper	

### Battery cycling

This product adopts Li-on rechargeable battery. In order to protect environment, please don't dispose waste battery at will. Supplier will provide battery recycling service for you.



**FCC WARNING:**  
Any Changes expressly or modifications not approved by the party responsible for compliance could void the user's authority to operate the equipment.  
This device complies with part 15 of the FCC Rules. Operation is subject to the following two conditions:  
(1) This device may not cause harmful interference, and (2) this device must accept any interference received, including interference that may cause undesired operation.  
Note: This equipment has been tested and found to comply with the limits for a Class B digital device, pursuant to part 15 of the FCC Rules. These limits are designed to provide reasonable protection against harmful interference in a residential installation. This equipment generates, uses and can radiate radio frequency energy and, if not installed and used in accordance with the instructions, may cause harmful interference to radio communications. However, there is no guarantee that interference will not occur in a particular installation. If this equipment does cause harmful interference to radio or television reception, which can be determined by turning the equipment off and on, the user is encouraged to try to correct the interference by one or more of the following measures:  
—Reorient or relocate the receiving antenna.  
—Increase the separation between the equipment and receiver.  
—Connect the equipment into an outlet on a circuit different from that to which the receiver is connected.  
—Consult the dealer or an experienced radio/TV technician for help.

**FCC Radiation Exposure Statement:**  
This equipment complies with FCC radiation exposure limits set forth for an uncontrolled environment.  
This transmitter must not be co-located or operating in conjunction with any other antenna or transmitter.