

FCC TEST REPORT

Product : Thermal Receipt Printer
Trade mark : RONGTA
Model/Type reference : ACE H1
Serial Number : N/A
Ratings : DC 24V 2.5A
FCC ID : 2AD6G-ACE-H1
Report Number : EED32J000840
Date : Jul. 12, 2017
Regulations : See below

Test Standards	Results
<input checked="" type="checkbox"/> 47 CFR FCC Part 15 Subpart B	PASS

Prepared for:

XIAMEN RONGTA TECHNOLOGY CO., LTD.

3F, E Plant, Gaoqi Industrial Zones, No. 195, Gaoqi Community, Gaodian Village, Huli Xiamen, Fujian, China

Prepared by:

Centre Testing International Group Co., Ltd.

Hongwei Industrial Zone, Bao'an 70 District,

Shenzhen, Guangdong, China

TEL: +86-755-3368 3668

FAX: +86-755-3368 3385

Compiled by:

Jackson Wu

Reviewed by:

Piton Xiao

Approved by:

Christy Chen

Date:

Jul. 12, 2017

Christy Chen

Lab supervisor

Check No.: 2496502512



TABLE OF CONTENTS

Description	Page
1. GENERAL INFORMATION.....	3
2. TEST SUMMARY.....	3
3. MEASUREMENT UNCERTAINTY.....	3
4. PRODUCT INFORMATION AND TEST SETUP.....	4
5. FACILITIES AND ACCREDITATIONS.....	4
5.1 TEST FACILITY.....	4
5.2 TEST EQUIPMENT LIST.....	4
6. SYSTEM TEST CONFIGURATION.....	6
6.1. JUSTIFICATION.....	6
6.2. PRODUCT EXERCISING SOFTWARE.....	6
7. CONDUCTED EMISSION TEST.....	7
7.1. LIMITS.....	7
7.2. BLOCK DIAGRAM OF TEST SETUP.....	7
7.3. PROCEDURE OF CONDUCTED EMISSION TEST.....	7
7.4. WORST CASE TEST GRAPHS AND TEST DATA.....	8
8. RADIATED EMISSION TEST.....	12
8.1. LIMITS.....	12
8.2. BLOCK DIAGRAM OF TEST SETUP.....	12
8.3. PROCEDURE OF RADIATED EMISSION TEST.....	12
8.4. WORST CASE TEST GRAPHS AND TEST DATA.....	13
APPENDIX 1 PHOTOGRAPHS OF TEST SETUP.....	15
APPENDIX 2 EXTERNAL PHOTOGRAPHS OF PRODUCT.....	16
APPENDIX 3 INTERNAL PHOTOGRAPHS OF PRODUCT.....	19

(Note: N/A means not applicable)

1. GENERAL INFORMATION

Applicant: XIAMEN RONGTA TECHNOLOGY CO., LTD.
3F,E Plant, Gaoqi Industrial Zones, No.195, Gaoqi Community, Gaodian Village, Huli Xiamen, Fujian, China

Manufacturer: XIAMEN RONGTA TECHNOLOGY CO., LTD.
3F,E Plant, Gaoqi Industrial Zones, No.195, Gaoqi Community, Gaodian Village, Huli Xiamen, Fujian, China

Equipment Authorization: Certification

FCC ID: 2AD6G-ACE-H1

Product: Thermal Receipt Printer

Trade mark: RONGTA

Model/Type reference: ACE H1

Serial Number: N/A

Report Number: EED32J000840

Sample Received Date: May 08, 2017

Sample tested Date: May 08, 2017 to May 18, 2017

The tested sample(s) and the sample information are provided by the client.

2. TEST SUMMARY

The Product has been tested according to the following specifications:

Standard	Test Item	Test
FCC 15.107	Conducted Emission	Yes
FCC 15.109	Radiated Emission	Yes

3. MEASUREMENT UNCERTAINTY

Where relevant, the following measurement uncertainty levels have been estimated for tests performed on the Product as specified in CISPR 16-4-2. This uncertainty represents an expanded uncertainty expressed at approximately the 95% confidence level using a coverage factor of k=2.

Test item	Value (dB)
Conducted disturbance	3.4
Radiated disturbance (30MHz to 1GHz)	5.3

4. PRODUCT INFORMATION AND TEST SETUP

4.1. PRODUCT INFORMATION

Ratings: DC 24V 2.5A

Adapter information: Manufacture: GUANGZHOU DAJING SCIENCE AND TECHNOLOGY CO.,LTD
Model No. : DJ-240250
Input : 100-240V~, 50/60Hz 1.5 MAX
Output: +24VDC--- 2.5 MAX

Cable of Product

No.	Cable Type	Quantity	Provider	Length (m)	Specification	Note
1	USB	1	Applicant	1.5	unshielded	With a ferrite ring in middle detachable

4.2. TEST SETUP CONFIGURATION

See test photographs attached in Appendix 1 for the actual connections between Product and support equipment.

4.3. SUPPORT EQUIPMENT

No.	Device Type	Brand	Model	Series No.	Data Cable	Power Cord
1.	Notebook	LENOVO	E24L	---	---	---
2	Mouse	L.selection	OP-200	B1005023926IYNB	Shielded 1.5m	---

Notes:

1. All the equipment/cables were placed in the worst-case configuration to maximize the emission during the test.
2. Grounding was established in accordance with the manufacturer's requirements and conditions for the intended use.

5. FACILITIES AND ACCREDITATIONS

5.1 TEST FACILITY

All test facilities used to collect the test data are located at Hongwei Industrial Zone, Bao'an 70 District, Shenzhen, Guangdong, China. The site and apparatus are constructed in conformance with the requirements of ANSI C63.4, CISPR 16-1-1 and other equivalent standards.

5.2 TEST EQUIPMENT LIST

Instrumentation: The following list contains equipments used at CTI for testing.

The calibrations of the measuring instruments, including any accessories that may effect such calibration, are checked frequently to assure their accuracy. Adjustments are made and correction factors applied in accordance with instructions contained in the manual for the measuring instrument.

Equipment used during the tests:

Shielding Room No. 1 - Conducted Emission Test					
Equipment	Manufacturer	Model	Serial No.	Cal. Date	Cal. Due Date
Receiver	R&S	ESCI	100435	06/15/2016	06/15/2017
LISN	R&S	ENV216	100098	06/15/2016	06/15/2017

3M Semi-anechoic Chamber (2)- Radiated disturbance Test				
Equipment	Manufacturer	Model	Serial No.	Due Date
3M Chamber & Accessory Equipment	TDK	SAC-3	---	06/04/2019
Receiver	R&S	ESCI	100009	06/15/2017
TRILOG Broadband Antenna	schwarzbeck	VULB 9163	618	07/21/2017
Multi device Controller	matturo	NCD/070/10711112	---	N/A

6. SYSTEM TEST CONFIGURATION

6.1. JUSTIFICATION

The system was configured for testing in a typical fashion (as a customer would normally use it), The Product was placed on a turn table, which enabled the engineer to maximize emissions through its placement as outlined in ANSI C63.4 (2009).

The Product was powered by 120VAC/ 60Hz & 240VAC/ 50Hz during conducted emission test.

The Product was powered by 120VAC/ 60Hz during radiated emission test.

For maximizing emissions, the Product was rotated through 360°, the antenna height was varied from 1 meter to 4 meters above the ground plane, and the antenna polarization was changed. The rear of unit shall be flushed with the rear of the table.

All readings are extrapolated back to the equivalent three meter reading using inverse scaling with distance. Analyzer resolution is 100 kHz or greater for frequencies below 1000 MHz. The spurious emissions more than 20 dB below the permissible value are not reported.

7. CONDUCTED EMISSION TEST

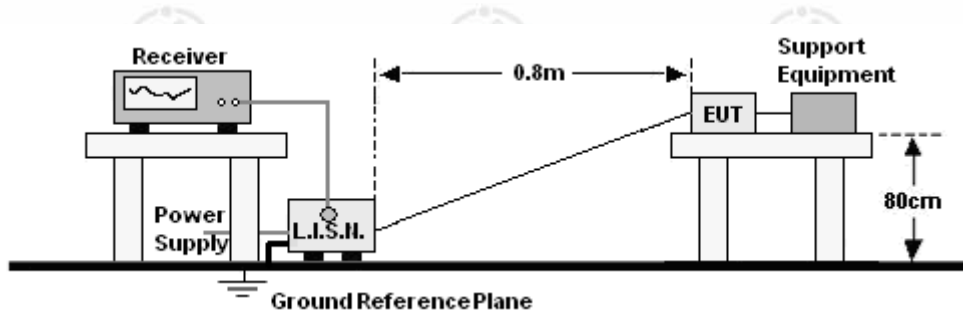
7.1. LIMITS

Limits for Class B digital devices

Frequency range (MHz)	Limits dB(μV)	
	Quasi-peak	Average
0,15 to 0,50	66 to 56	56 to 46
0,50 to 5	56	46
5 to 30	60	50

- NOTE:** 1. The lower limit shall apply at the transition frequencies.
2. The limit decreases linearly with the logarithm of the frequency in the range 0.15 to 0.50 MHz.

7.2. BLOCK DIAGRAM OF TEST SETUP

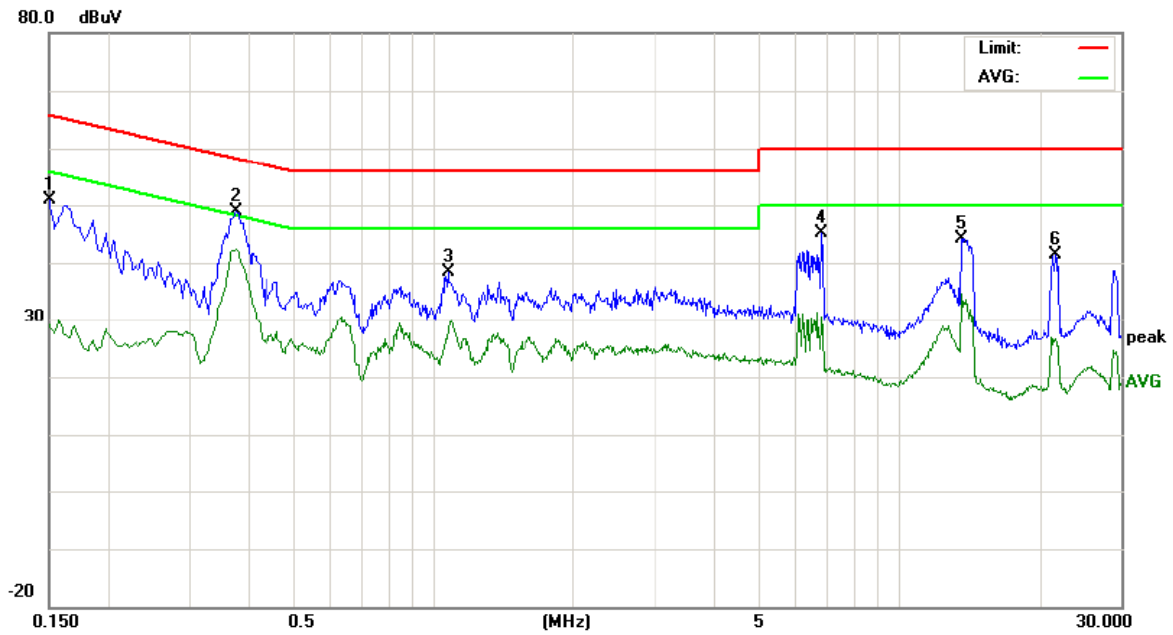


7.3. PROCEDURE OF CONDUCTED EMISSION TEST

- The Product was placed on a nonconductive table above the horizontal ground reference plane, and 0.4 m from the vertical ground reference plane, and connected to the main through Line Impedance Stability Network (L.I.S.N).
- The RBW of the receiver was set at 9 kHz in 150 kHz ~ 30MHz with Peak and AVG detector in Max Hold mode. Run the receiver's pre-scan to record the maximum disturbance generated from Product in all power lines in the full band.
- For each frequency whose maximum record was higher or close to limit, measure its QP and AVG values and record.

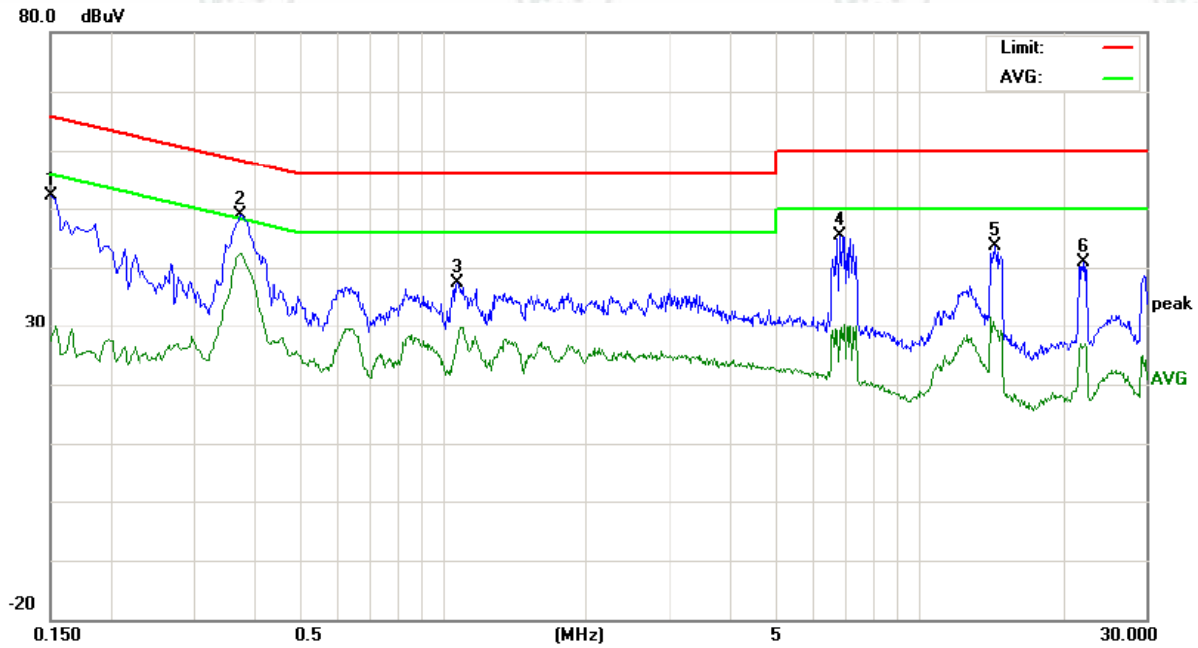
7.4. WORST CASE TEST GRAPHS AND TEST DATA

Product : Thermal Receipt Printer **Model/Type reference** : ACE H1
Power : AC 120V/60Hz **Temperature** : 22°C
Mode : Print **Humidity** : 53%
Phase : L



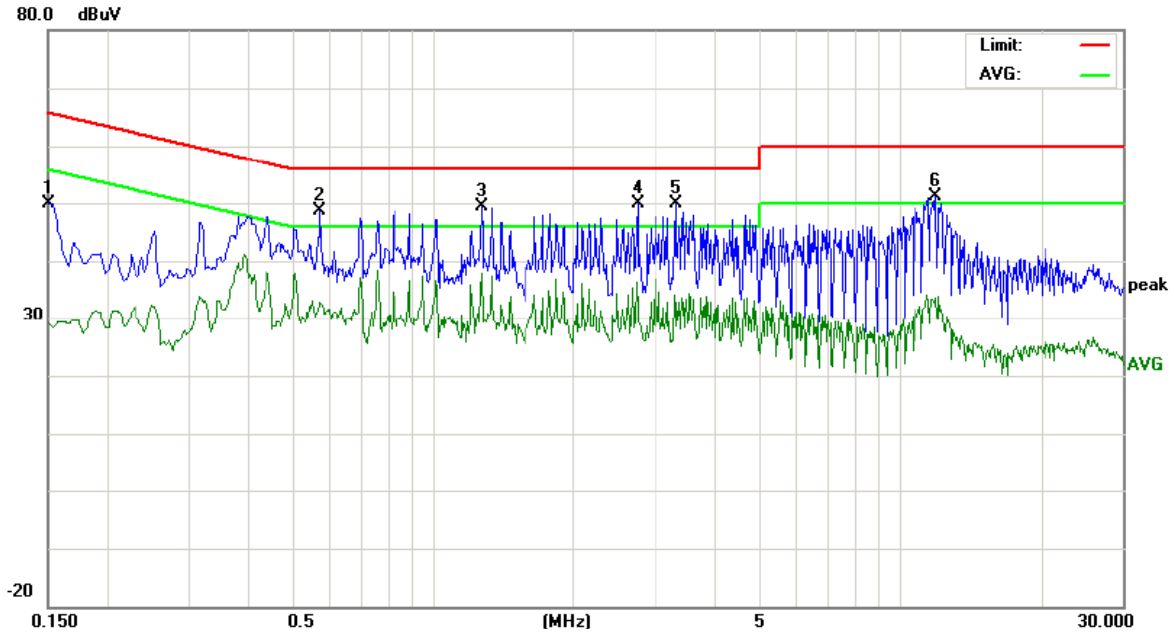
No.	Freq. MHz	Reading_Level (dBuV)			Correct Factor dB	Measurement (dBuV)			Limit (dBuV)		Margin (dB)		P/F	Comment
		Peak	QP	AVG		peak	QP	AVG	QP	AVG	QP	AVG		
1	0.1500	41.12		19.28	9.77	50.89		29.05	65.99	55.99	-15.10	-26.94	P	
2	0.3782	39.06	36.53	32.11	9.76	48.82	46.29	41.87	58.32	48.32	-12.03	-6.45	P	
3	1.0820	28.72		18.65	9.63	38.35		28.28	56.00	46.00	-17.65	-17.72	P	
4	6.8740	35.50		21.01	9.71	45.21		30.72	60.00	50.00	-14.79	-19.28	P	
5	13.6900	34.22		24.72	9.98	44.20		34.70	60.00	50.00	-15.80	-15.30	P	
6	21.7740	31.26		16.55	10.17	41.43		26.72	60.00	50.00	-18.57	-23.28	P	

Product : Thermal Receipt Printer **Model/Type reference** : ACE H1
Power : AC 120V/60Hz **Temperature** : 22°C
Mode : Print **Humidity** : 53%
Phase : N



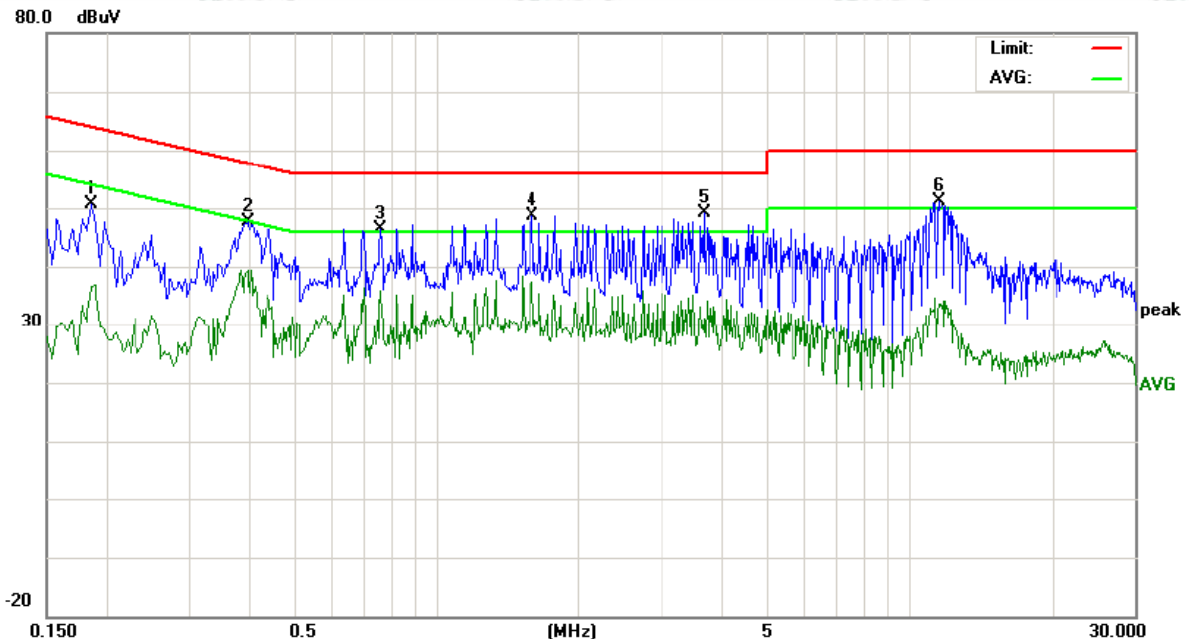
No.	Freq. MHz	Reading_Level (dBuV)			Correct Factor dB	Measurement (dBuV)			Limit (dBuV)		Margin (dB)		P/F	Comment
		Peak	QP	AVG		peak	QP	AVG	QP	AVG	QP	AVG		
1	0.1500	42.46		17.56	9.77	52.23	27.33	65.99	55.99	-13.76	-28.66	P		
2	0.3740	39.23		32.65	9.76	48.99	42.41	58.41	48.41	-9.42	-6.00	P		
3	1.0740	27.84		17.86	9.63	37.47	27.49	56.00	46.00	-18.53	-18.51	P		
4	6.8100	35.74		19.51	9.71	45.45	29.22	60.00	50.00	-14.55	-20.78	P		
5	14.4500	33.66		19.75	10.00	43.66	29.75	60.00	50.00	-16.34	-20.25	P		
6	22.2220	30.66		16.15	10.17	40.83	26.32	60.00	50.00	-19.17	-23.68	P		

Product : Thermal Receipt Printer **Model/Type reference** : ACE H1
Power : AC 240V/50Hz **Temperature** : 22°C
Mode : Print **Humidity** : 53%
Phase : L



No.	Freq. MHz	Reading_Level (dBUV)			Correct Factor dB	Measurement (dBUV)			Limit (dBUV)		Margin (dB)		P/F	Comment
		Peak	QP	AVG		peak	QP	AVG	QP	AVG	QP	AVG		
1	0.1499	40.05		19.48	9.77	49.82	29.25	66.00	56.00	-16.18	-26.75	P		
2	0.5728	38.76		23.20	9.74	48.50	32.94	56.00	46.00	-7.50	-13.06	P		
3	1.2683	39.64		28.33	9.65	49.29	37.98	56.00	46.00	-6.71	-8.02	P		
4	2.7348	40.10		22.05	9.70	49.80	31.75	56.00	46.00	-6.20	-14.25	P		
5	3.3096	40.19		22.39	9.68	49.87	32.07	56.00	46.00	-6.13	-13.93	P		
6	11.9313	41.28		23.59	9.94	51.22	33.53	60.00	50.00	-8.78	-16.47	P		

Product : Thermal Receipt Printer **Model/Type reference** : ACE H1
Power : AC 240V/50Hz **Temperature** : 22°C
Mode : Print **Humidity** : 53%
Phase : N



No.	Freq. MHz	Reading_Level (dBuV)			Correct Factor dB	Measurement (dBuV)			Limit (dBuV)		Margin (dB)		P/F	Comment
		Peak	QP	AVG		peak	QP	AVG	QP	AVG	QP	AVG		
1	0.1853	40.99		26.73	9.73	50.72	36.46	64.24	54.24	-13.52	-17.78	P		
2	0.3974	37.79		29.60	9.75	47.54	39.35	57.91	47.91	-10.37	-8.56	P		
3	0.7586	36.63		26.17	9.74	46.37	35.91	56.00	46.00	-9.63	-10.09	P		
4	1.5929	39.00		27.75	9.68	48.68	37.43	56.00	46.00	-7.32	-8.57	P		
5	3.6796	39.54		21.51	9.66	49.20	31.17	56.00	46.00	-6.80	-14.83	P		
6	11.5580	41.19		23.51	9.93	51.12	33.44	60.00	50.00	-8.88	-16.56	P		

8. RADIATED EMISSION TEST

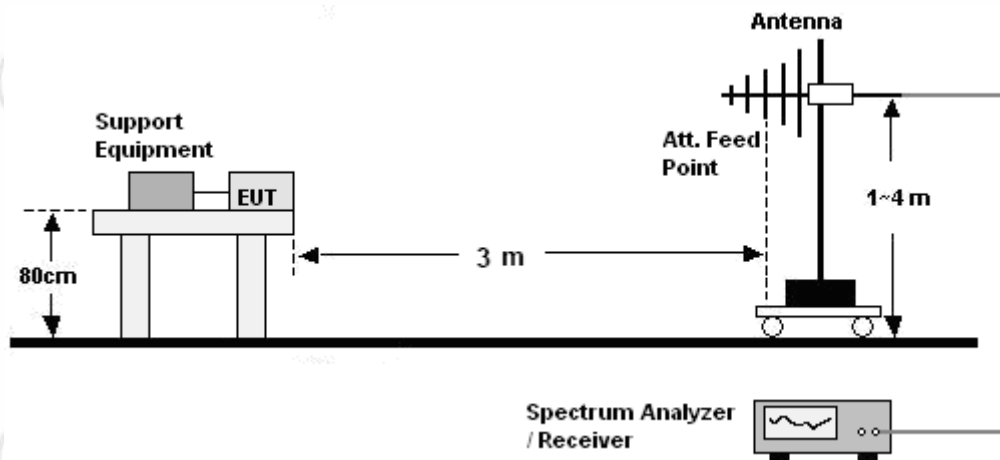
8.1. LIMITS

Limits for Class B digital devices

Frequency (MHz)	limits at 3m dB(μ V/m)
30-88	40.0
88-216	43.5
216-960	46.0
Above 960	54.0

- NOTE:**
1. The lower limit shall apply at the transition frequency.
 2. The limits shown above are based on measuring equipment employing a CISPR quasi-peak detector function for frequencies below or equal to 1000MHz.
 3. The limits shown above are based on measuring equipment employing an average detector function for frequencies above 1000MHz.

8.2. BLOCK DIAGRAM OF TEST SETUP



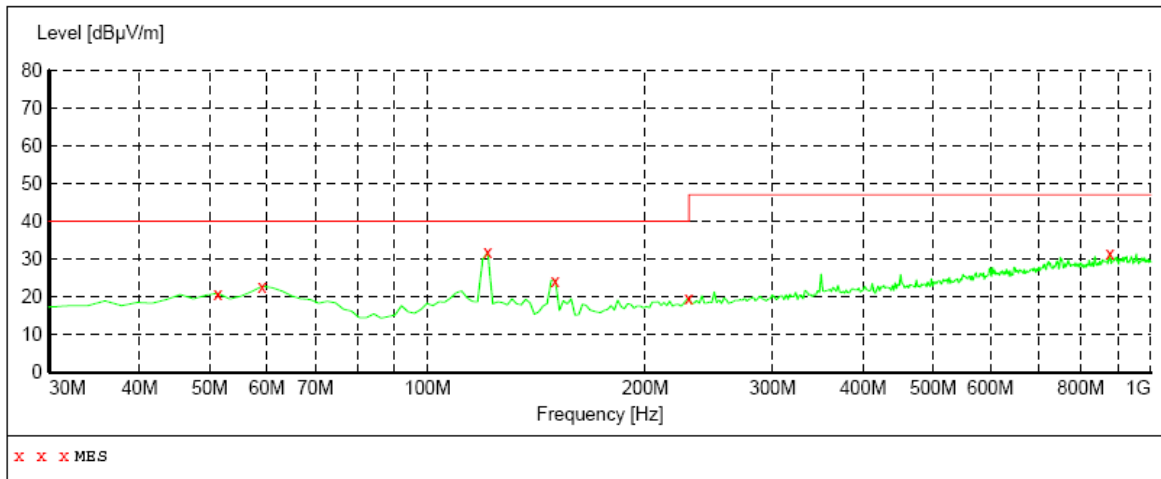
8.3. PROCEDURE OF RADIATED EMISSION TEST

30MHz ~ 1GHz:

- a. The Product was placed on the non-conductive turntable 0.8m above the ground at a chamber.
- b. Set the spectrum analyzer/receiver in Peak detector, Max Hold mode, and 120 kHz RBW. Record the maximum field strength of all the pre-scan process in the full band when the antenna is varied between 1~4 m in both horizontal and vertical, and the turntable is rotated from 0 to 360 degrees.
- c. For each frequency whose maximum record was higher or close to limit, measure its QP value: vary the antenna's height and rotate the turntable from 0 to 360 degrees to find the height and degree where Product radiated the maximum emission, then set the test frequency analyzer/receiver to QP Detector and specified bandwidth with Maximum Hold Mode, and record the maximum value.

8.4. WORST CASE TEST GRAPHS AND TEST DATA

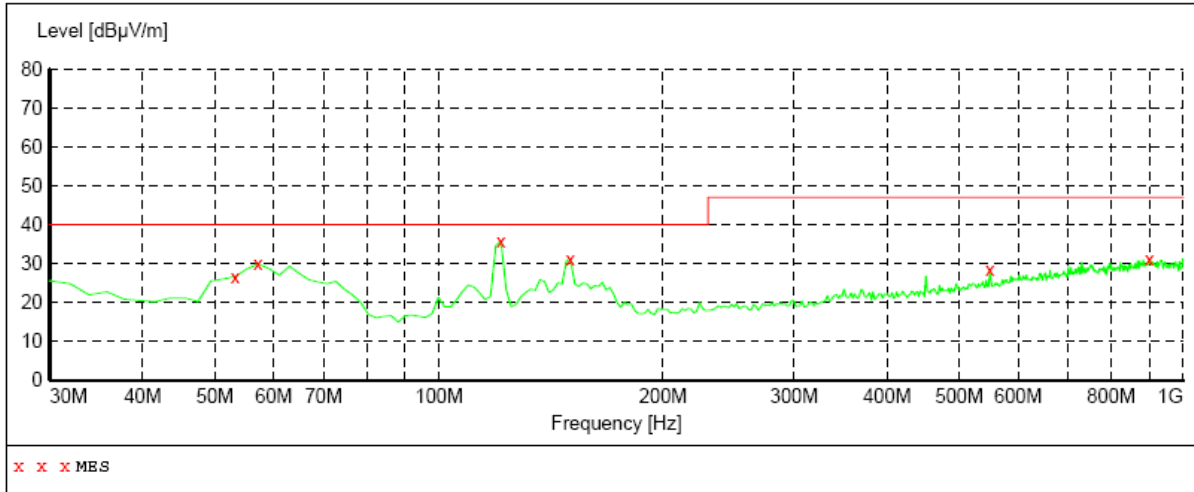
Product : Thermal Receipt Printer **Model/Type reference** : ACE H1
Power : AC 120V/60Hz **Temperature** : 24°C
Mode : Print **Humidity** : 50%
Polarization : Horizontal



MEASUREMENT RESULT:

Frequency MHz	Level dBµV/m	Transd dB	Limit dBµV/m	Margin dB	Det.	Height cm	Azimuth deg	Polarization
51.340000	20.90	14.6	40.0	19.1	QP	100.0	349.00	HORIZONTAL
59.100000	22.80	13.7	40.0	17.2	QP	200.0	55.00	HORIZONTAL
121.180000	31.80	11.1	40.0	8.2	QP	200.0	206.00	HORIZONTAL
150.280000	24.40	9.2	40.0	15.6	QP	200.0	244.00	HORIZONTAL
229.820000	19.70	13.8	40.0	20.3	QP	100.0	0.00	HORIZONTAL
877.780000	31.60	24.9	47.0	15.4	QP	100.0	0.00	HORIZONTAL

Product : Thermal Receipt Printer **Model/Type reference** : ACE H1
Power : AC 120V/60Hz **Temperature** : 24°C
Mode : Print **Humidity** : 50%
Polarization : Vertical



MEASUREMENT RESULT:

Frequency MHz	Level dBµV/m	Transd dB	Limit dBµV/m	Margin dB	Det.	Height cm	Azimuth deg	Polarization
53.280000	26.70	14.4	40.0	13.3	QP	100.0	43.00	VERTICAL
57.160000	29.90	14.0	40.0	10.1	QP	100.0	5.00	VERTICAL
121.180000	35.90	11.1	40.0	4.1	QP	100.0	247.00	VERTICAL
150.280000	31.20	9.2	40.0	8.8	QP	100.0	104.00	VERTICAL
549.920000	28.50	20.0	47.0	18.5	QP	100.0	92.00	VERTICAL
901.060000	31.30	25.2	47.0	15.7	QP	100.0	237.00	VERTICAL

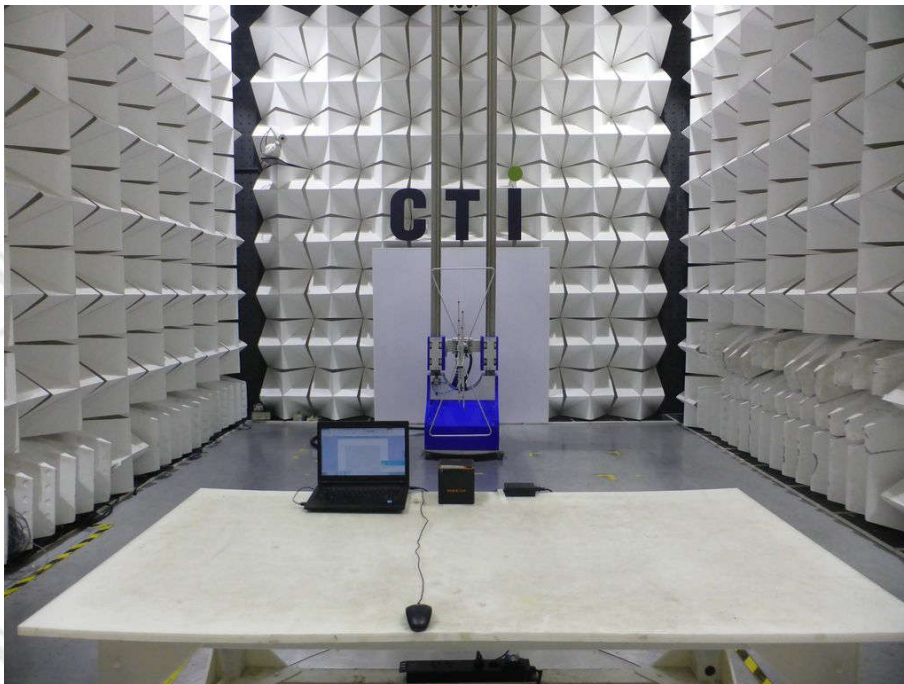
Remark:

The highest frequency of the internal sources of the EUT is 100 MHz, so the measurement shall only be made up to 1 GHz.

APPENDIX 1 PHOTOGRAPHS OF TEST SETUP



CONDUCTED EMISSION TEST SETUP



RADIATED EMISSION TEST SETUP

APPENDIX 2 EXTERNAL PHOTOGRAPHS OF PRODUCT



External View of Product-1



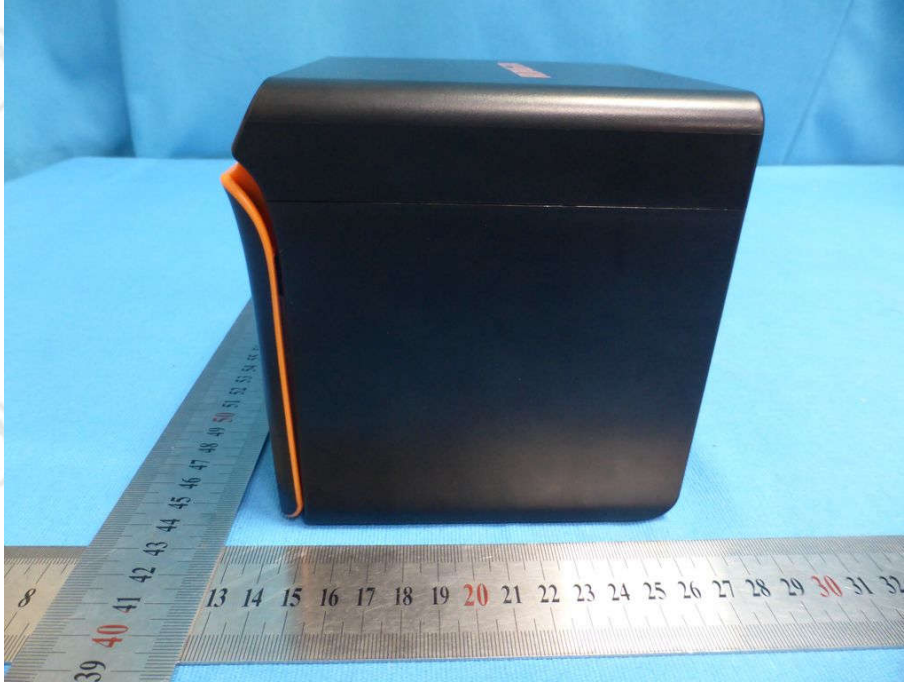
External View of Product-2



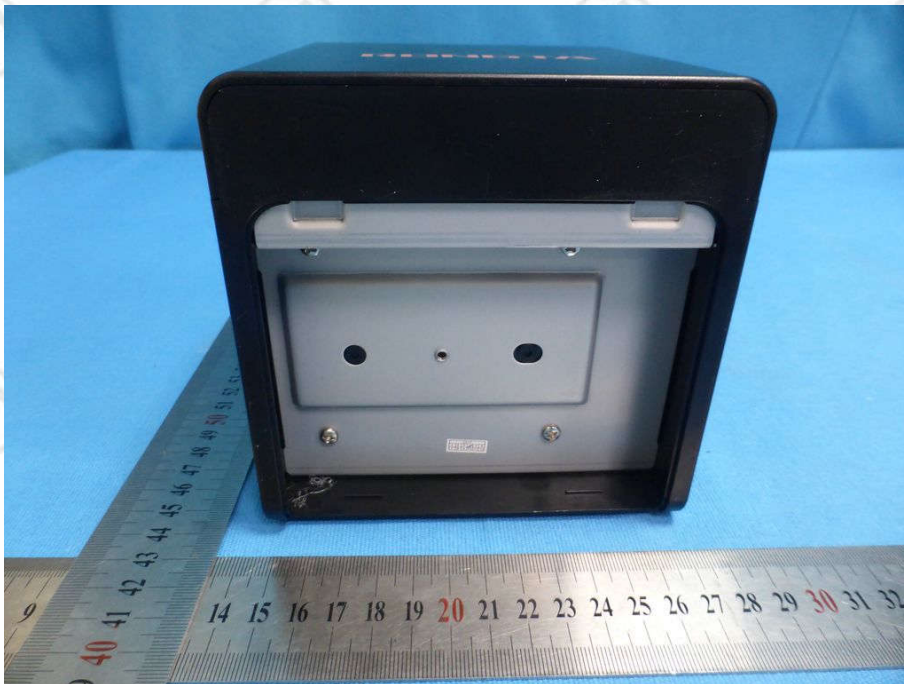
External View of Product-3



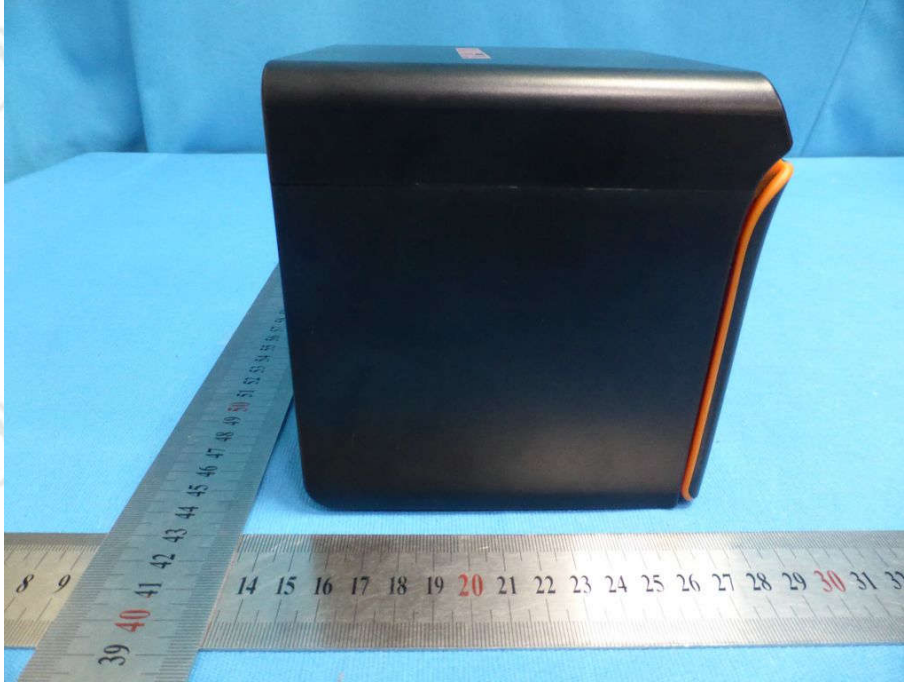
External View of Product-4



External View of Product-5



External View of Product-6



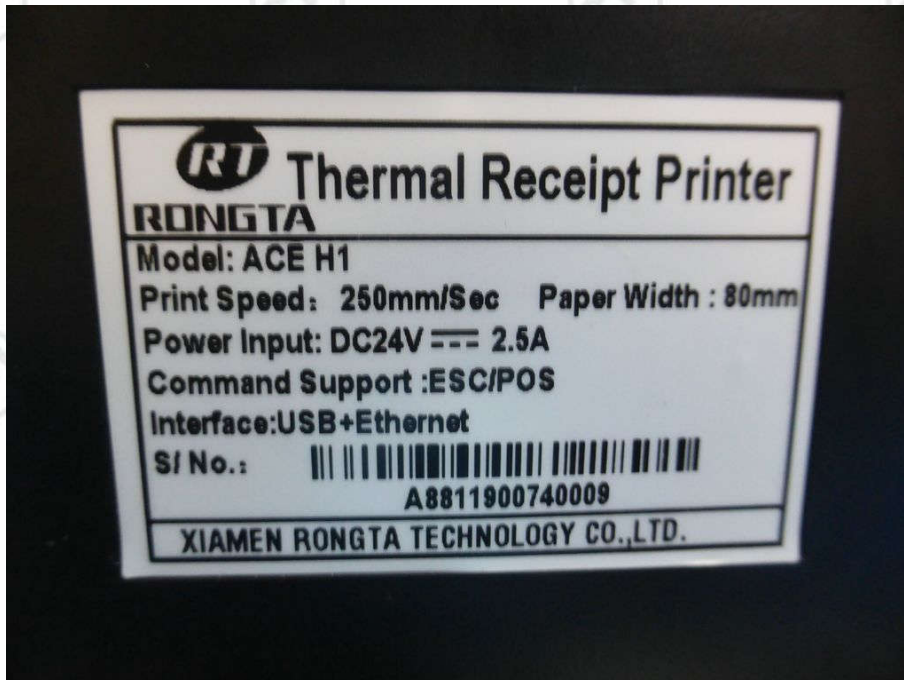
External View of Product-7



External View of Product-8



External View of Product-9

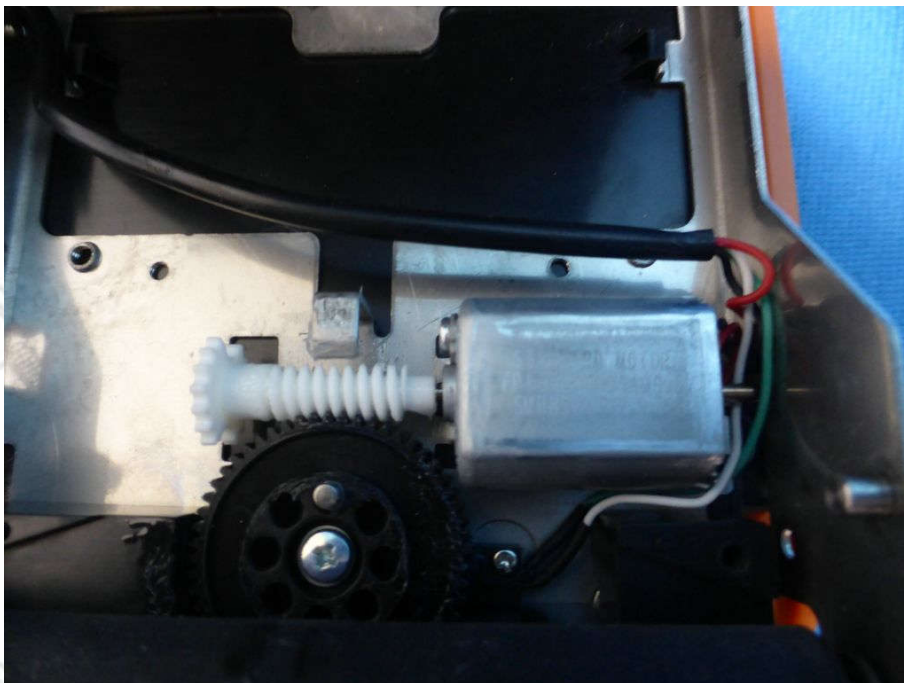


External View of Product-10

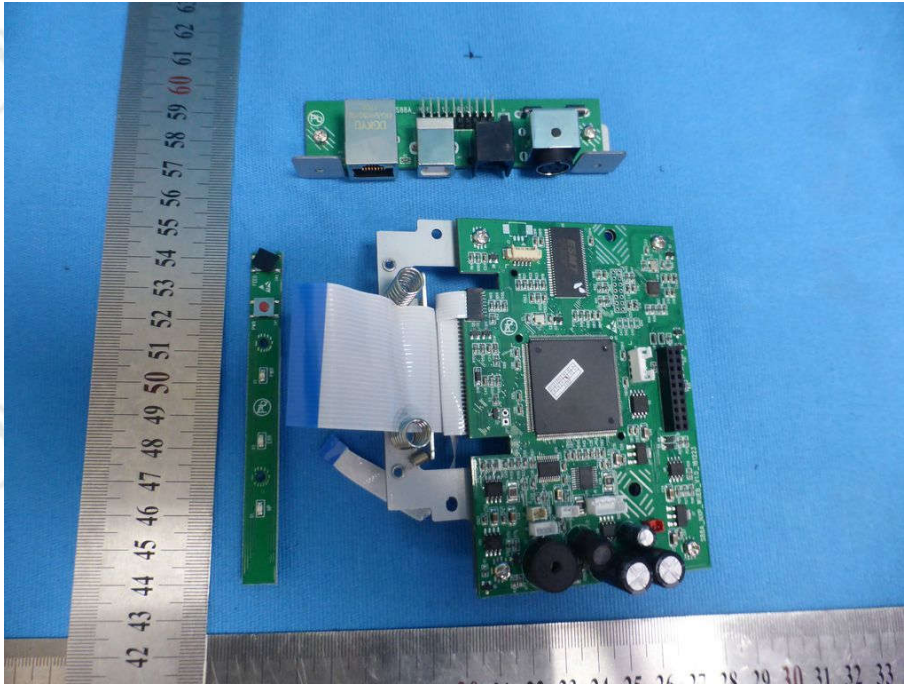
APPENDIX 3 INTERNAL PHOTOGRAPHS OF PRODUCT



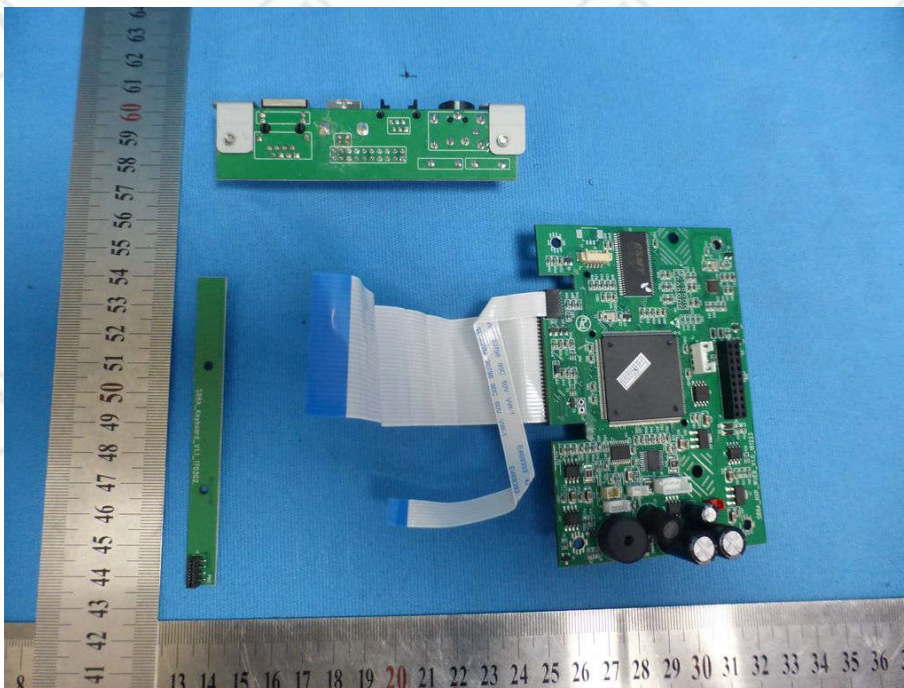
Internal View of Product-1



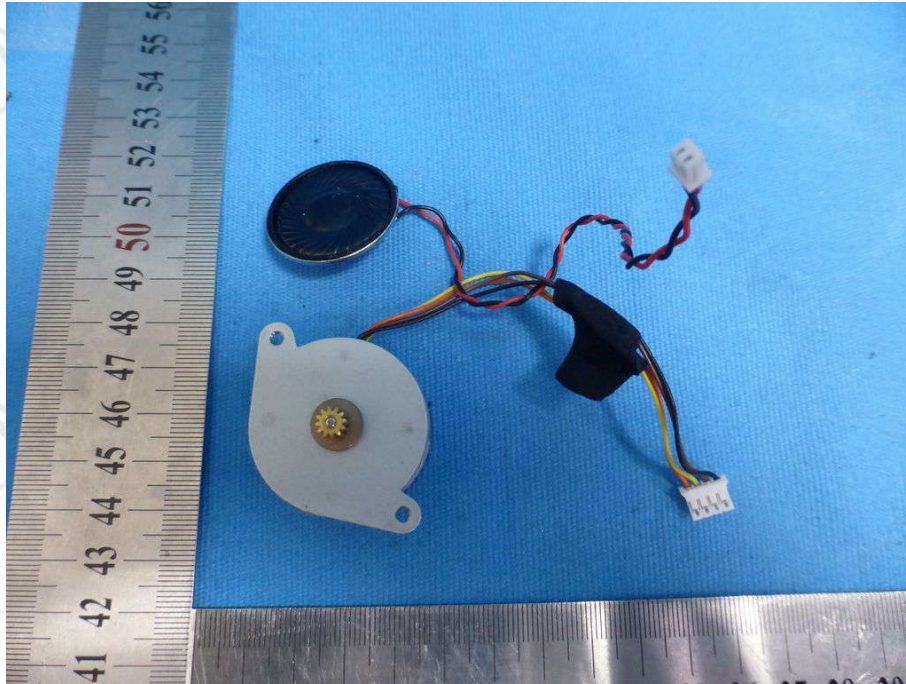
Internal View of Product-2



Internal View of Product-3



Internal View of Product-4



Internal View of Product-5

*** End of Report ***

The test report is effective only with both signature and specialized stamp. The result(s) shown in this report refer only to the sample(s) tested. Without written approval of CTI, this report can't be reproduced except in full.