

Tablet PC User's Manual

Product Name: 2in1

version : 1.0

Release Date: 2014.10

Announcement

Dear users:

Thank you for purchasing and using our products. For the sake of your safety and interests, before using the products, please carefully read the product specifications as well as all the materials attached to the PC. If you don't operate and use the products according to the product specifications, we shall not assume any responsibility for any personal harmony, assets or other losses incurred.

The product specifications (hereinafter referred to a specifications):

- The proprietary of the specifications belongs to our company;
- The proprietary of trademark and trade name mentioned in the specifications belongs to their respective owners;
- If the content of specifications doesn't conform to that of the actual product, the actual product shall be binding.

If you have any misunderstanding or objection about any content or article & clause in the specifications, please put forward a written objection within 7days after purchasing the PC. Otherwise, it shall be deemed that you have agreed to, understood and accepted all the contents of the specifications.

Catalogue

1.0	Product overview	4
1.1	Introduction	4
1.2	Unpacking and inspection	4
1.3	Introduction to parts & components	5
2.0	Basic common knowledge on computer operation	8
2.1	Stop the computer	8
2.2	Function of keyboard.....	8
2.4	Display screen	9
2.5	Electromagnetic-screen	9
2.6	The use of the electromagnetic pen	10
2.7	Multimedia Dock.....	10
3.0	Setup of BIOS (basic input & output system)	12
3.1	Method on use of BIOS setup	12
3.2	Boot Option	13
3.3	Main.....	14
3.4	Advanced.....	15
3.5	Security.....	0
3.6	Exit	1
4.0	Installation of driver program	2
5.0	Special notice.....	3
5.1	Special hint	3
5.2	Please be sure to read the important hints for using Tablet PC	3
5.3	Special notice.....	4
5.4	Please be sure to read the instructions on the Power of Tablet PC.....	5
5.5	Instructions on safety.....	6
6.0	Fault analysis and elimination	7
6.1	Problem on sound	7
6.2	Problems on monitor	7
7.0	Special Declaration	8
8.0	Annex A:Product Specifications.....	9

1.0 Product overview

1.1 Introduction

- Product name: Tablet PC
- Series and type: W23
- Characteristics of product performance: The Tablet PC adopts the latest mobile computation technology of INTEL and has a better performance.
- Clear LCD: The Tablet PC has a TFT, which brings you clear and bright colorful words and images.
- Use only the power adapter that comes with your device. Using a different power adapter may damage your device.
- The input voltage range between the wall outlet and this adapter is AC 110V–240V, and the output voltage of this adapter is DC 12V, 3.0A.
- To prolong battery life, fully charge the battery ,when using the tablet PC for the first time and whenever the battery, power is fully depleted.
- The tablet PC uses the Windows 8.1 system, Specific about the Windows 8.1 operating system and application, please refer to Microsoft's release of 《Windows 8.1 User's Guide》

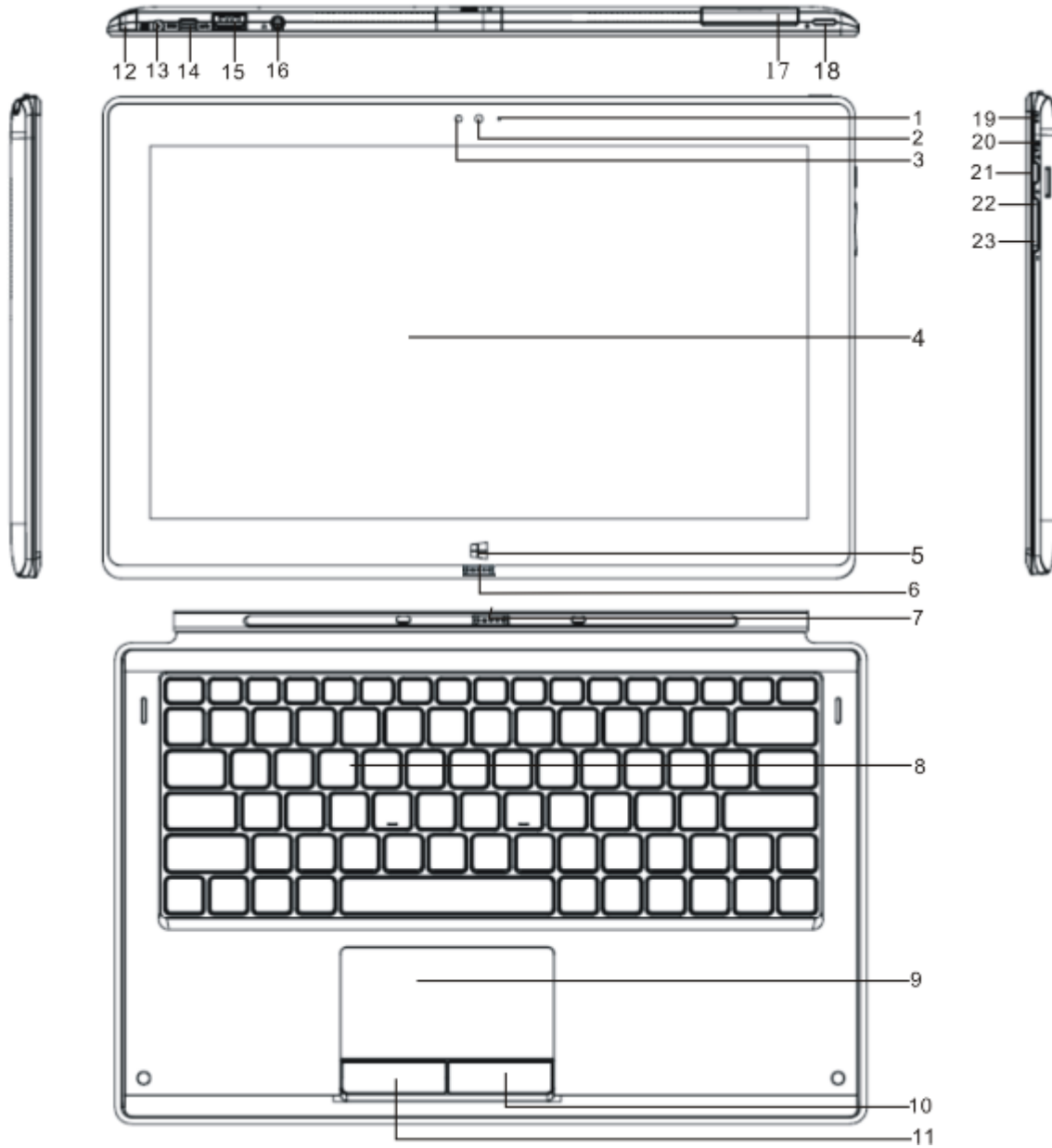
1.2 Unpacking and inspection

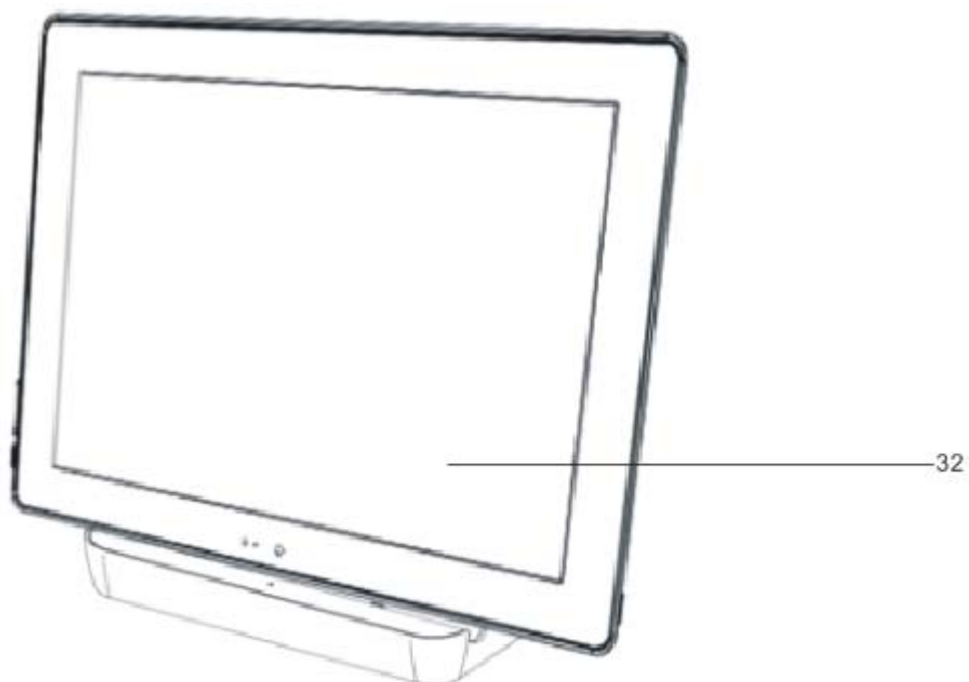
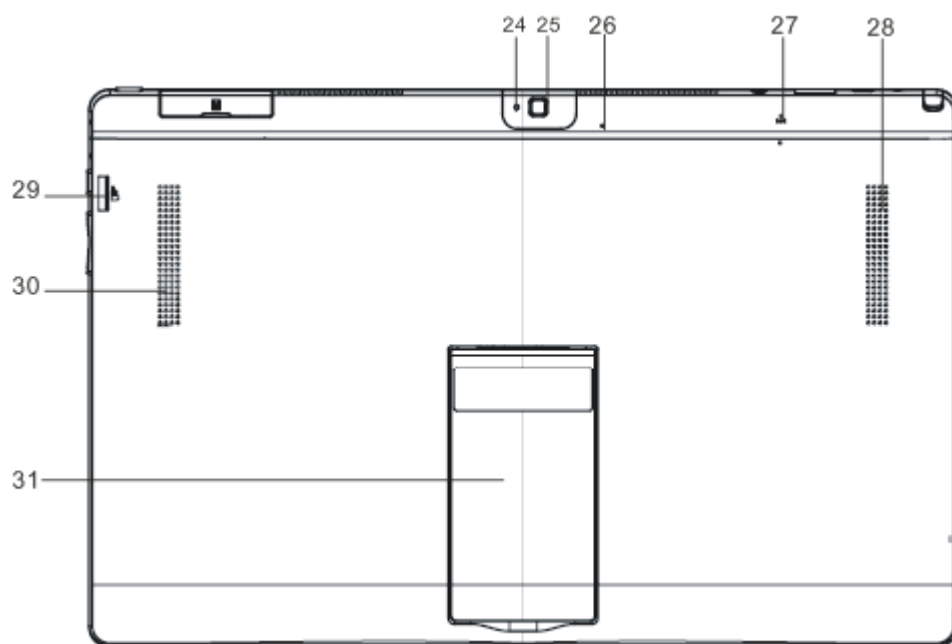
Please carefully remove the package and take out the tablet PC and other accessories. If any loss and missing are found, please immediately contact distributors .Please store the original packing materials for replacing goods
Generally, you will have the following parts& components

1. Laptop computer
2. Keyboard
3. Power adaptor
4. User's manual
5. Disk on driver program
6. Warranty card
7. Quality certificate

1.3 Introduction to parts & components

(Note: The following images are schematic diagrams and the real objects shall be binding)





NO.	NAME	NO.	NAME	NO.	NAME
1	Front camera Light	12	Electromagnetic Pen	23	Volume Decrease key
2	Front camera	13	Power adapter jack	24	Back camera Light
3	Light Sensor	14	Micro HDMI	25	Back camera
4	Screen+Touch Panel	15	USB port	26	Built-in microphone
5	HOME KEY	16	Earphone input port	27	Reset
6	Right key of mouse	17	3G Socket(Optional)	28	Speaker
7	Magnetic strip (UP)	18	Power button	29	Micro SD Port
8	Magnetic strip (DW)	19	Power Indicators	30	Speaker
9	Touchpad	20	Charge Indicators	31	Support
10	Right click button	21	Rotary locking button	32	Multimedia dock
11	Left click button	22	Volume Increase key		















2.0 Basic common knowledge on computer operation

2.1 Stop the computer

When you finish your work, you can shut off the computer power or let the computer enter the mode of Sleeping or hibernation.

Mode of stopping	method	Method on re-starting or usage
Directly shut off the power	Please follow the program for shutting the operating system. By doing so, you can avoid the losses of data or damages of software. If the system is halted due to the problems on hardware or software , you can use the power button to shut off the computer.	Using the power button
Sleeping	According to your setup of Windows, the system will enter the sleeping status according to following method: A, Close the Keyboard button; B, Use the power button.	Using the power button
Hibernation	According to your setup of Windows, the system will enter the hibernation status according to following method: A, Close the keyboard cover; B, Use the power button.	Using the power button

2.2 Function of keyboard

Icon	Function	The function	Icon	Function	The function
	Windows key	To return Windows 8.1 main screen		Fn+F10	Volume Decrease key
	Fn+F2	Play / Pause		Fn+F11	Volume Increase key
	Fn+F3	Stop playing		Fn+F12	Close the touchpad
	Fn+F4	Previous song		Fn+ ^{Ins} NumLk	Open the num Lock
	Fn+F5	Next song		Fn+ ^{Del} ScrLk	Open the scroll Lock
	Fn+F6	Play music	Home	FN+Home	Skip to Home
	Fn+F7	Open the Email	End	FN+End	Skip to footer
	Fn+F8	Open the IE browser	Page Up	FN+Page Up	Page up
	Fn+F9	Mute key	Page Down	FN+Page Down	Page down

2.3 Touch pad

The built-in touch pad of keyboard is a position device. You can feel the movement on its surface. Move your finger on the surface of touch pad, the cursor will follow.

2.4 Display screen

In order for the comfort of your eyes, your laptop computer is equipped with LED LCD, which supports high resolution and real color function. It brings marvelous visual excitement.

To prolong the lifespan of display screen.

To obey the following rules can prolong the lifespan of display screen.

- To adjust the brightness of screen into the minimum brightness, which is comfortable to you eyes.
- When using it on the table, please connect an external monitor and shut off the display screen of the laptop computer.
- Don't close the option of entering the pause mode in shutting off the power management.
- If the AC power is used and there is no external monitor, please don't switch to the pause mode when not using it.

[Note]

In order to prolong the life time, adjust the brightness to the minimum degree under the precondition of comfortable visual enjoyment. In this way, the internal light source can use less power.

2.5 Electromagnetic-screen

The Tablet PC has a new electromagnetic-screen technology to bring us back to basics "original handwriting" input experience, and integrated electromagnetic board to write on the screen by an electromagnetic pen, whether it is E-mail or meeting shorthand and classroom, can be done it. In addition, the electromagnetic screen technology can bring us the real paintings, drawings and other applications.

Unlike ordinary capacitive screen technology, the electromagnetic screen technology with a rear-mounted design, make the picture quality and brightness is completely free from electromagnetic board with a precise touch, is to ensure the performance of the best screen image display.

The high transmittance for the art drawing, photography, production and other areas of expertise, can bring the most realistic color quality, and better able to provide better and more intuitive operation support. Electromagnetic pen directly on the screen, as obtained in the paper on the real painting experience, allowing users to hand from the eye can be the most intuitive operating experience.

The electromagnetic plate includes highly sensitive reaction speed, zero delay shows the precise handwriting speed, and every inch of the 2048 line wide pen diameter thickness recognition performance, precision depict the different thickness of the pen diameter. Echo each other with the Z-axis detection sensing capabilities, in addition to the simulation include writing, signature, can provide natural, real hand-painted experience, to better meet the

needs of professional drawing, digital animation field.

In addition, the electromagnetic pen with the mainstream 2048 Order handwriting pressure sensitivity, able to pass a more accurate handwriting mode, simulate more real pen to write pen diameter thickness effect. We will experience the most realistic, accurate original handwriting input experience.

2.6 The use of the electromagnetic pen

- The use of the electromagnetic pen:

Before using the electromagnetic pen, touch the pen tip for the display screen, the electromagnetic pen to enter the working state. When the electromagnetic pen stopped working 5 minutes will be automatically converted to hibernation.

- Left key of mouse

Click touch screen, then the electromagnetic pen will be enter the left mouse button functions.

- Right key of mouse

A) The electromagnetic pen nib long-pressure touch screen for about 3 seconds, the electromagnetic pen will be switched to the right mouse button.

B) When the electromagnetic pen in working condition, Press the button of the electromagnetic pen, the electromagnetic pen will be switched to the right mouse button

- Working indicator:

Electromagnetic pen in working condition, the blue indicator point is on.

- Low voltage indicator:

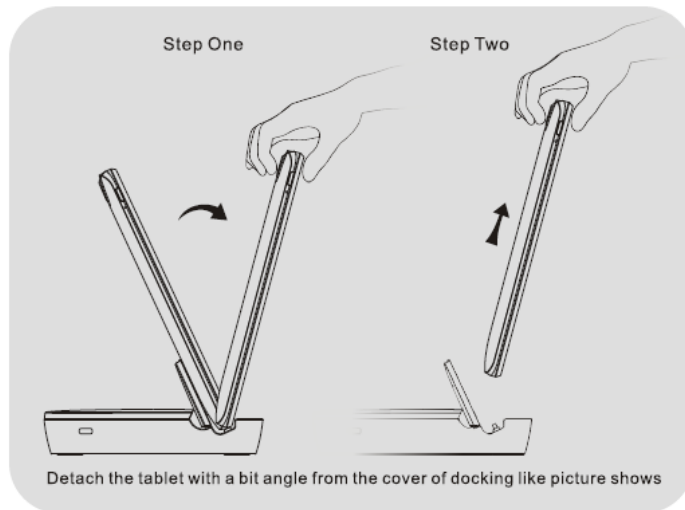
Electromagnetic pen in working condition, the red indicator point is on, indicating the battery voltage is low, and please immediately charged.

- Indicator charge:

Electromagnetic pen is charging, the red indicator point is on, The electromagnetic pen will stop working. When the battery is fully charged, the electromagnetic pen charging indicator light will go off

2.7 Multimedia Dock

- Multimedia dock is a extended functions of the Tablet PC , It is a collection of USB storage, USB data connection, HDMI high-definition large-screen display, LAN connection and other multimedia features.
- Pull the Tablet PC up directly, maybe the Multimedia Dock will be follow up and drop down. So, please turn the Tablet PC over 45 degree angle and pull it.'



- NOTE: The tablet PC uses the Multimedia Dock, Operations related to the Multimedia Dock please refer to the company release of 《DK02 Multimedia Dock User's manual》

3.0 Setup of BIOS (basic input & output system)

In this chapter, we will teach you how to enter the BIOS setup program as well as the setup of control options for all kinds of hardware. You will also learn how to use the setup of the built-in protection.

The setup of common program is a hardware status program built in the BIOS of the laptop computer. It can execute and maintain many hardware functions. It's a software enabling operation with the menu mode and allowing the easy setup and change of set value.

BIOS contains with the ex-works pre-set values of laptop computer. However, you still have a lot of opportunity to modify the pre-set values in BIOS. When the hardware is altered, such as upgrading , in case of temporary conditions, or when you decide to self-determine the set value of hardware so as to meet the special needs, it may be necessary for you to start the BIOS setup program.

BIOS can restrict the access by uses by setting up passwords. This is important function because the laptop computer usually keeps a lot of materials and the unauthorized access can be prevented.

3.1 Method on use of BIOS setup

The cases where you must execute the BIOS setup:

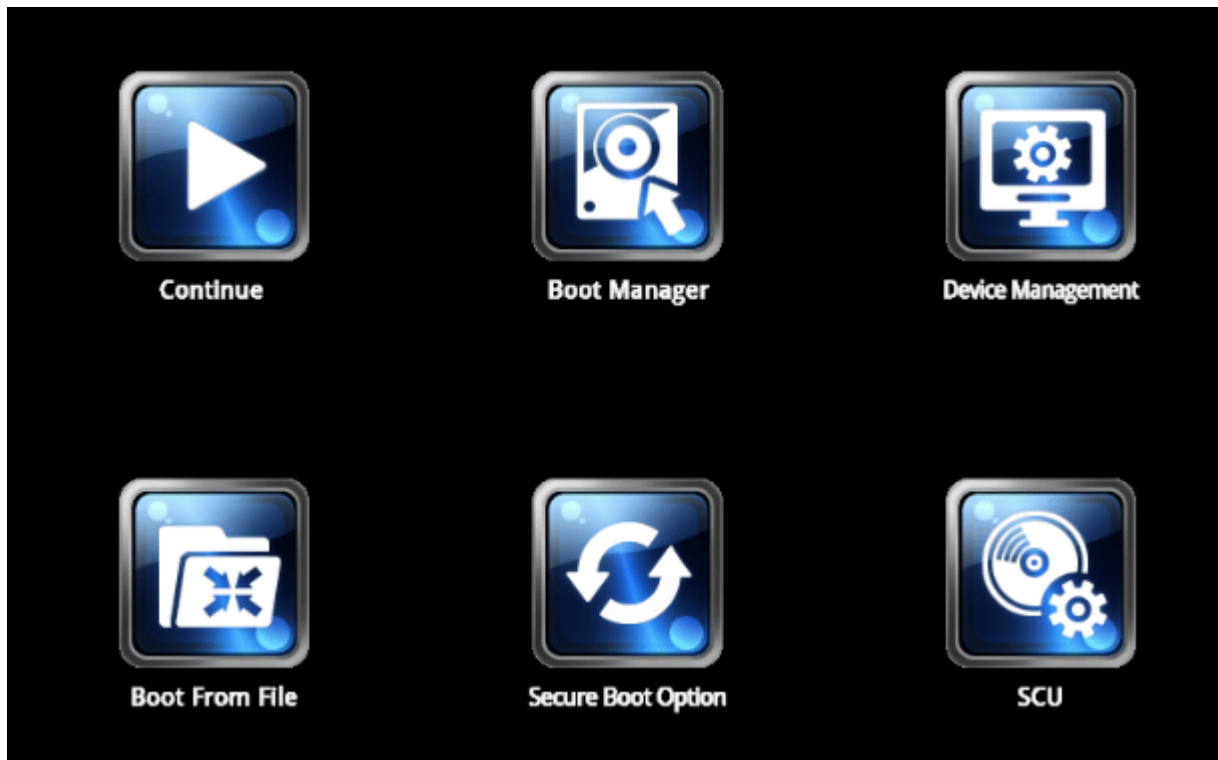
- In case of any problem founding in the booting test, some information will appear on the screen, requiring you to execute the BIOS setup.
- You need to resume the default value.
- You need to change the setup value according to the specific hardware.
- You need to change the setup value in order to acquire the optimum system
- If you plan to execute the BIOS setup, when starting the computer , press the " **ESC**"key

How to select

For one option, you only complete the setup through two-level options. The majority of these options must pass three-level options: menu title, drop-down menu and sub-menu.

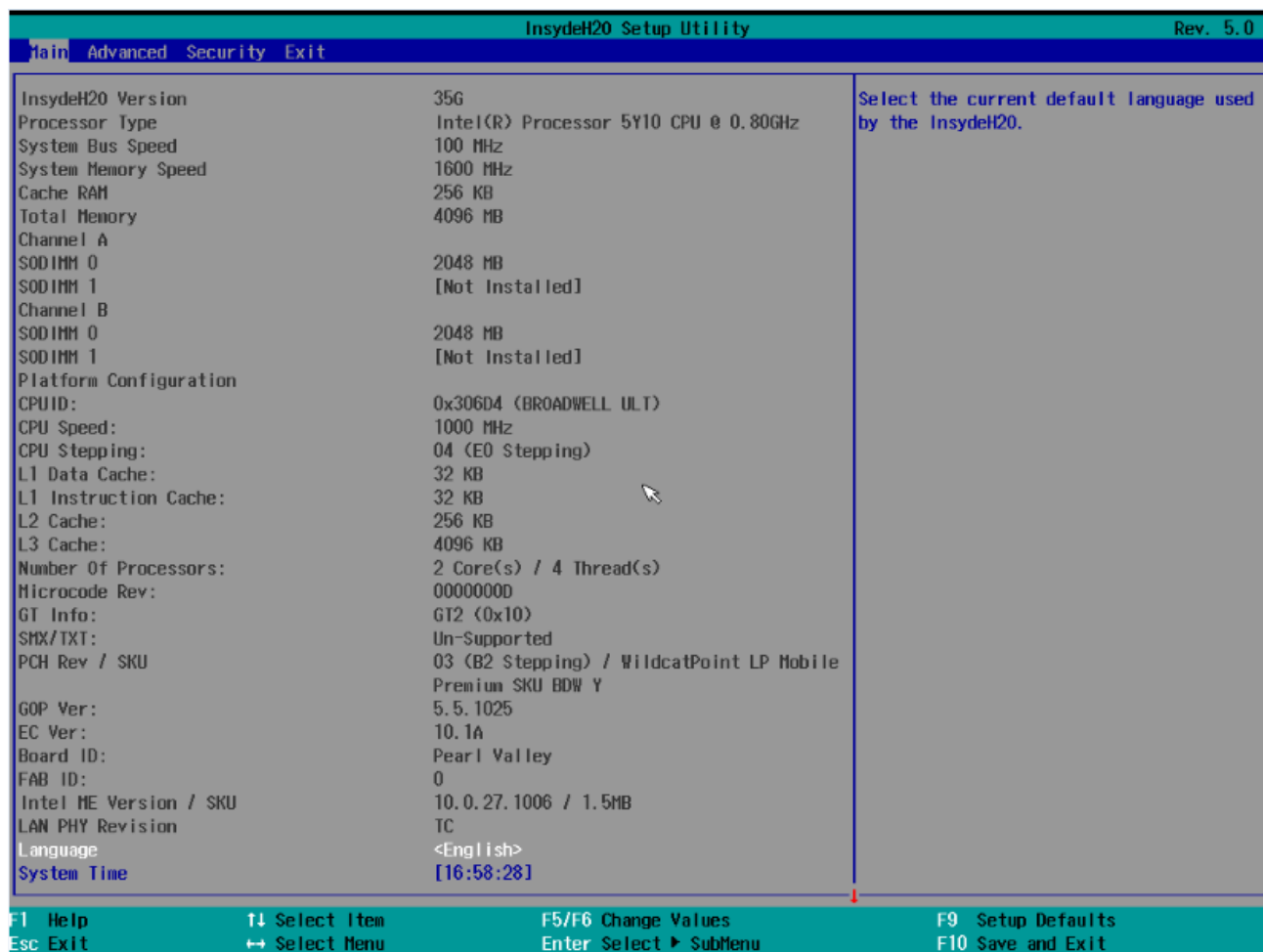
Use the keyboard to move and to choose. You can see the information on keyboard at the right lower corner of the screen.

3.2 Boot Option



Continue:	Continue, and normal startup
Boot Manager:	Boot option
Device Management:	UEFI options
Boot from File:	Select a UEFI file to startup
Secure Boot Option:	Secure Boot Option
SCU:	BIOS settings

3.3 Main

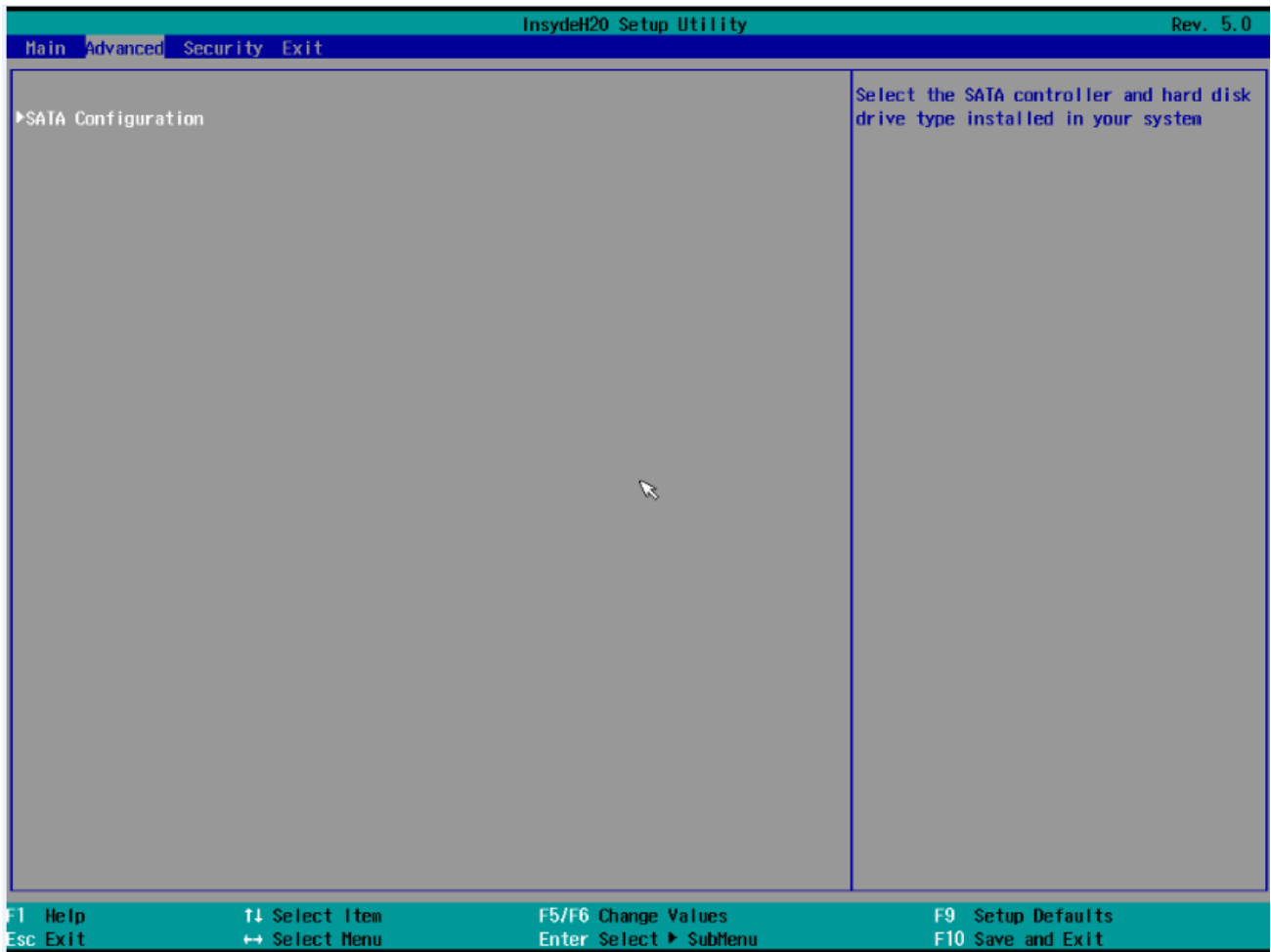


Language: Selects the display language

System Time: Setup of the system time

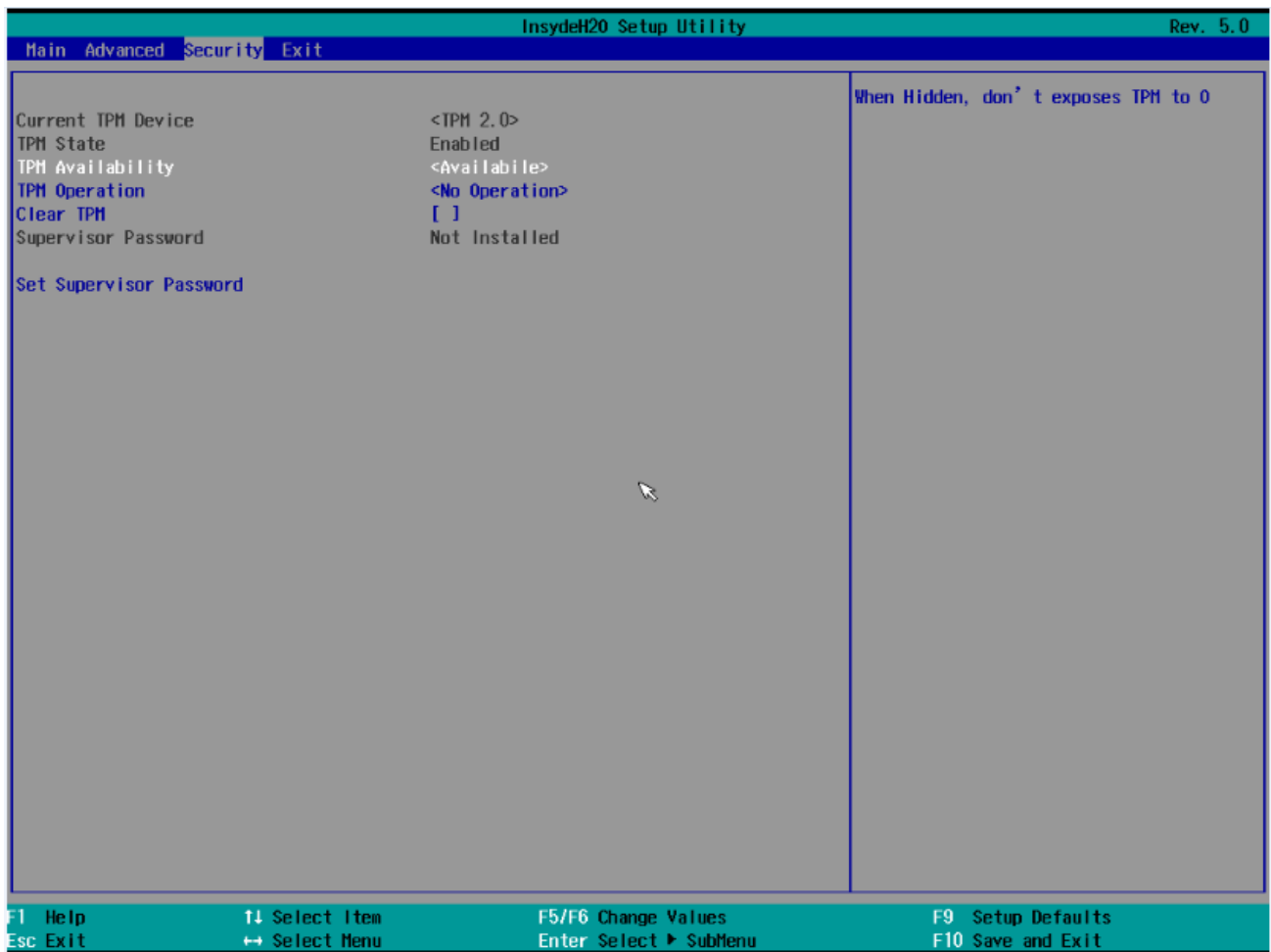
System Date: Setup of the system data

3.4 Advanced



SATA Configuration: SATA Configuration

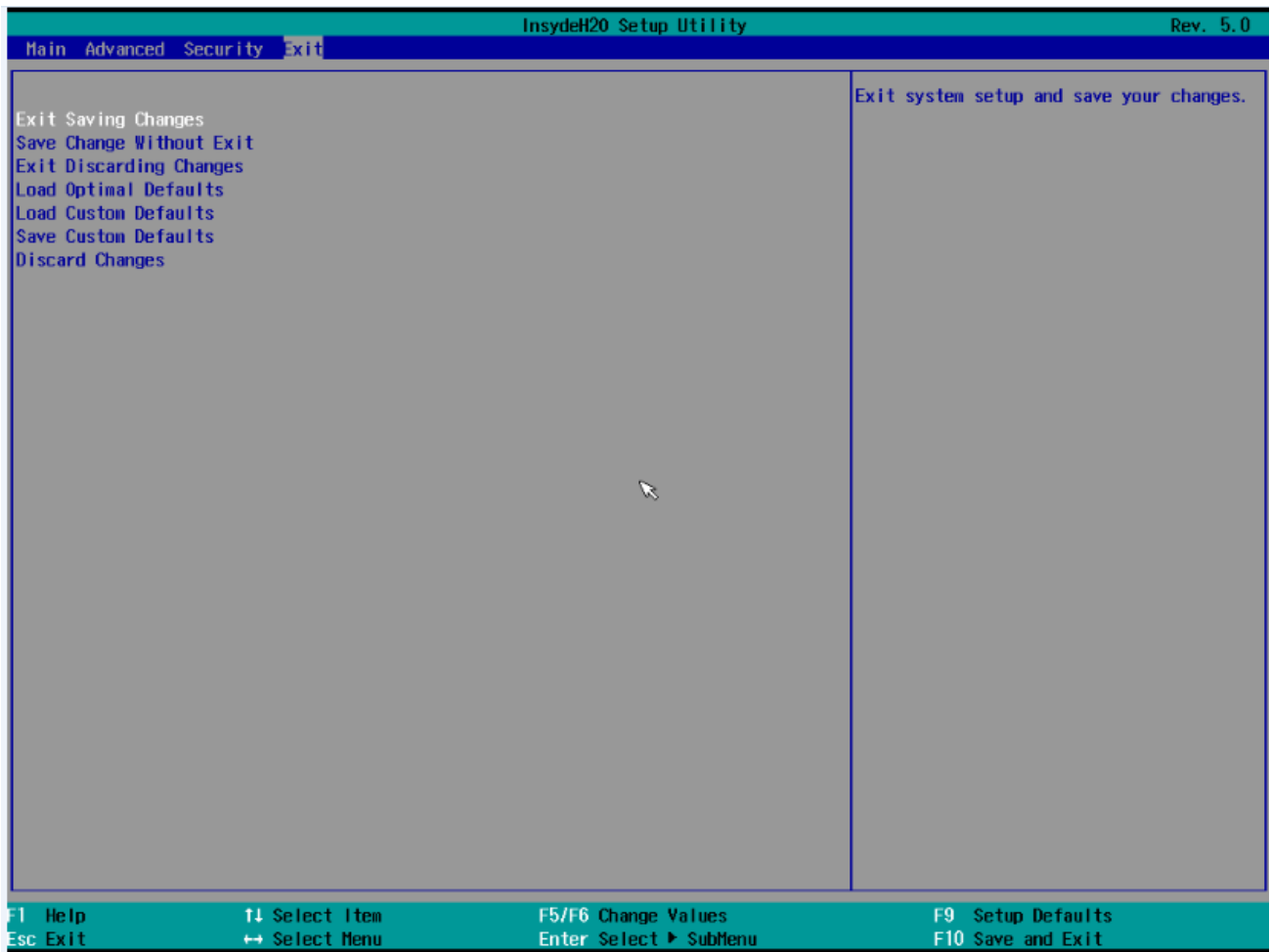
3.5 Security



TPM availability: TPM Setup

Set Supervisor Password: Set Supervisor Password

3.6 Exit



- Exit Saving Changes: Save Settings exit
- Save Changes: Save Settings
- Exit Discarding Changes: Do not save your settings and exit
- Load Setup Defaults: Import the default settings
- Load Custom Defaults: Load Custom Defaults
- Save Custom Defaults: Save Custom Defaults
- Discard Changes: Do not save your settings

4.0 Installation of driver program

The laptop computer support Windows8.1

Open CD on any external CD-drive via USB, operation procedures, illustrated as follows:

(Note: The following images are schematic diagrams and the real objects shall be binding)



Driver installation of WIN8.1

Click on the corresponding chart icon, and then follow the prompts to complete installation.

5.0 Special notice

5.1 Special hint

In order to facilitate understanding and arouse your attention, as for product safety or information needing special attention to, we will give you the hints in this chapter or the chapters that follows according to the following levels and special warning words. These special warning words are expressed as follows:

[Danger]---indicating cautions against high risks;

[Warning]---indicating cautions against medium risks;

[Note]---indicating that attention should be paid to light risks;

[Prohibition]---indicating that dangerous operation should be prohibited;

[Reminder]---indicating that attention should be paid to safety or other contents;

This chapter doesn't provide all the safety information. For the sake of your safety and interests, we put the safety information on parts of the products in the subsequent chapters as needed. No matter where these safety information are located, you should carefully read them.

Similarly, besides the special notices expressed with special warning words, you should give same attention to other contents and introduction in the specifications.

5.2 Please be sure to read the important hints for using Tablet PC

Tablet PCs belong to high-tech and precision products. Please be sure to carefully read the following use hints.

1) Maintenance of LCD

- Don't put any heavy things on the Tablet PC.
- When using suitcase or backpack, please make sure that there aren't too much things inside and no additional pressure is put on the Tablet PC bag and the back part of LCD.
- Please don't scratch, twist or strike the touch panel.
- Don't place the screen of LCD in an environment where the temperature exceeds 40 Celsius degrees or the humidity exceeds 90%.
- Don't expose the screen of LCD to direct sunlight or strong fluorescence.
- Don't place any things on the touch panel, such as pencil, documents and so on, which will destroy or scratch LCD screen.
- Please don't use corrosive detergent to wipe LCD screen, which will destroy screen.

2) Please don't open the Tablet PC shell when the system is running because this will lead to data loss or destruction. The formatting of HD can delete all the data in HD. Please back up the data in advance. As for important data, please make sure that they have been timely backed up in other storage mediums. The company shall not assume any responsibility for the data losses incurred.

3) The safe use of power

- The power supply should be stable and be free from interference. When you are not clear about the local specifications on electric appliance, please consult your distributors or your local power company.
- When plugging off the power, you should avoid pulling off the electric wire directly by pulling.
- Please make sure to pull from the root of socket so as to guarantee safety.

- Please don't disconnect the power adaptor.
 - Please don't use the power adaptor not attached to the Tablet PC because this will damage the Tablet PC.
- 4) This product can only be disassembled by authorized service staff of agent company. Please make sure to keep the sealing strip intact. Otherwise, the warranty or three guarantees service may be influenced.
- 5) If you have set up a password, please keep it in mind. Otherwise, your Tablet PC can not be started. If you have forgotten the password, please contact the supplier or authorized maintenance station. However, this may destroy all of your data.

5.3 Special notice

1) Applicable group

[Note] You should master a certain basic common language on Tablet PC in order to operate the Tablet PC. Meanwhile, the Tablet PC is not suitable for independent operation by children. If necessary, children must be accompanied by adults.

2) Working environment

[Danger] In order to prevent accidental failure, the Tablet PC should run within the following defined environmental scope:

Content	Scope of application	Remarks
Temperature of storage and transportation	-20°C - 50°C	
Relative humidity of storage and transportation	20% - 93% (40°C)	
Atmospheric pressure	86kPa – 106kPa	
Adaptation capability of power	100V–240V, 50Hz–60Hz	
Working humidity	35% - 80%	
Working temperature	10°C - 35°C	

[Warning] In order to prevent the Tablet PC from being harmed by the environment (dampness, dust, food, liquid, direct exposure to sunlight etc), the Tablet PC should be placed in a dry place with good ventilation.

In order to prevent the Tablet PC from being disturbed and damaged by the magnetic field, please keep it away from other household electric appliances (such as Television set, air conditioner etc).

[Warning] Please don't splash liquid or other impurities into the Tablet PC. Otherwise, it may lead to short-circuiting of its internal components, which will further give rise to electric shock or fire accidents.

[Note] If the Tablet PC is switched on and started when the low temperature condition hasn't been resumed, it may lead to unrepairable faults on the Tablet PC. Therefore, before using the Tablet PC, please firstly make sure that the Tablet PC is resumed for over 2 hours under the room temperature (above 10 Celsius degrees).

[Note] Ask an airline personnel if you want to use your Tablet PC onboard an aircraft. Most airlines have restrictions for using electronic Tablet PCs. Most airlines allow electronic use only between and not during takeoffs and landings.

3) Before being used

[Warning] After the Tablet PC is stored and transported under the environment of lower than 10°C, the Tablet PC should be placed for over 2 hours under the room temperature condition of 10°C - 35°C before being used in order to prevent the Tablet PC temperature from getting excessively low, which thus give rise to electrified damages. Please don't disassemble the package during the period. Let the Tablet PC resume its temperature naturally and avoid the temperature increasing excessively quickly, which thus leads to electrified damages.

[Note] Before using the Tablet PC, please make sure that the Tablet PC connection, power use and other affairs

conform to the requirements in the specifications.

Removal, transportation and storage

[Note] When moving the Tablet PC, special care should be taken.

The Tablet PC should be placed in the original packing box in case of transportation. You should pile and place the packing box according to the symbol and indication of packing & transportation diagram. You should also use closed cases in case of removal.

[Note]In case of storage, the packing materials should be placed beyond children's reach in order to prevent the occurrence of unsafe conditions.

[Note]According to the relevant interpretation of GB/T9813-2000 General Specifications of Micro-Tablet PC, after the Tablet PC is stored and transported under the environment of lower than 10°C, before using the Tablet PC, please place the Tablet PC for over 2 hours under the room temperature condition of 10-35 Celsius degrees in order to avoid electrified damages due to excessively low Tablet PC temperature. Please don't disassemble the package during the period. Let the Tablet PC resume its temperature naturally and avoid the temperature increasing excessively quickly, which thus leads to electrified damages due to Tablet PC frosting and dewing.

Battery

If you intend to use battery power, be sure to fully charge your battery pack before going on long trips. Remember that the power adapter charges the battery pack as long as it is plugged into the computer and an AC power source. Be aware that it takes much longer to charge the battery pack when the Tablet PC is in use.

Remember to fully charge the battery (8 hours or more) before first use and whenever it is depleted to prolong battery life. The battery reaches its maximum capacity after a few full charging and discharging cycles.

[Note]

1) When your tablet PC into the multimedia dock, If you want to charge your tablet, power adapter must be connected to the multimedia dock charging port, if you connected to the tablet's charging port, the charging indicator light will display shimmering white light alarm, indicating that the job can't be charged

2) To replace the Polymer battery of Tablet PC incorrectly may give rise to explosion risks. Please make sure that the replacement and installation of Polymer battery be done by professional maintenance staff. Only battery products of same or equivalent types recommended by manufacturers can be used for replacement. The proper discarding of battery will lead to serious environmental pollution. Please dispose of the consumed battery in a proper way or return the waste & used battery to the post-sales & maintenance department for treatment so as to avoid environmental pollution.

5.4 Please be sure to read the instructions on the Power of Tablet PC

1) Power

[Danger]

You need to use quality power plug and socket, If you replace standard power lines without authorization, it may lead to serious results. Meanwhile, the maximum length of power lines shouldn't exceed 4.5 meters.

Before using the power, you should confirm that the power conforms to the requirements of Tablet PC, use according to the specifications of power plug and socket. Quality power is important guarantee for the normal running of the Tablet PC. Otherwise, it may lead to serious results.

[Danger]

During the thunderstorm period, the use of products may harm the safety of your body and other assets. Therefore, during the weather of thunderstorm, please avoid using the Tablet PC, disconnect the telephone line, network line, power line and other conducts which are connected with outside. In case of thunder, please don't

insert and pull these lines & cables.

[Note]

Carefully examine the AC power line attached when purchasing the Tablet PC. In case of any problems, please contact relevant dealer.

The power line used for micro Tablet PC must conform to the following safety regulations:

- Conformity to CCC certification
- The power plug should be inserted in the safety of the final good power supply
- The power plug must conform to GB15934-2008

5.5 Instructions on safety

- 1) The power plug hole should be installed near the equipment or places easy for operation. When inserting and pulling the power line, avoid directly pulling out the power line by pulling and dragging. Please be sure to pull from the root of plug so as to guarantee the safety and caution against electric shock. Please don't disassemble the power adaptor.
- 2) Not to place the product in places with easy access to water.
- 3) In case of installation, please place the product on a stable supporting foundation. This product may fall off due to un-stable placement, which leads to serious damages.
- 4) Not to place the products in places where there are frequent flow of people so as to avoid trampling the electric wire. Please make sure that no articles are placed on the electric wire.
- 5) Follow all the warning information and indication on the products.
- 6) If you don't plan to use the product for a long period, please pull off the power plug so as to avoid excessive transient voltage, which can cause damages.
- 7) Please don't splash any liquid on the product. This action may lead to risks of fire accidents or electric shock.
- 8) In case of the following conditions, it should be serviced by professionals:
 - The power line or socket has been destroyed or torn off.
 - The liquid is splashed to the product.
 - The product is drenched by raining or splashed by water.
 - When you follow the instructions on operation, the product is still unable to run normally.
 - If the product once fell off or its shell has been destroyed.
 - If the product has apparent damages.
- 9) For the usage and storage temperature of this product, please refer to the product specification in annex A. If the product is not used and stored within the defined temperature scope, it may lead to permanent damages on the product.
- 10) Please don't use the power adaptor where it's near to water or other liquids. Please don't splash liquid to the power adaptor.

Note:

All the photos & diagrams in this manual are schematic diagrams and can only be used for reference. The actual use should be based on the object.

6.0 Fault analysis and elimination

- In this chapter, you will learn how to solve general problem on hardware.
- Your Tablet PC must pass a Tablet PC test and conform to the system specification before being delivered. However, incorrect operation or negligence during the conveyance process will lead to the occurrence of problems.
- This chapter will provide reference and identification information for general problems on hardware and software you may encounter.
- In case of any problem, you can firstly try to eliminate it according to the description in this chapter. If the cases of error continue to emerge, consult your distributors for service information.

6.1 Problem on sound

1) Without sound

- press the volume mode "+" key so as to adjust to increase the volume.
- most of the problems on sound are related to software .If your Tablet PC has a normal sound previously, the reason may be that the software setup is incorrect.

6.2 Problems on monitor

1) Black screen in case of system booting

Please make sure that the Tablet PC is not in [hibernation] or [sleeping] mode. Under these modes, the monitor will be shut off so as to conserve energy sources.

2) Screen flashing

When you start or shut the Tablet PC, the screen will flash for several times. This is a normal phenomenon.

3) Damaged point of screen

Due to the restriction of LCD manufacturing process, some image points cannot normally display a certain colors on LCD (i.e the generally-called damaged point). This is normal phenomenon. You can feel assured. For details, please refer to GB/T9813-2000.

The relevant contents on the national standards are as follows.

Inspection shall be conducted under the following condition:

- Ambient temperature:20℃-25℃
- Light: 300Lux-700Lux
- Visual distance: 35cm
- Distance for visual observation: the visual line and screen surface form 90 degrees.

7.0 Special Declaration

This Tablet PC can support several peripheral Tablet PCs & hardware, such as mouse, keyboard. As for the peripheral equipment accompanied with the Tablet PC, the Tablet PC, the Tablet PC doesn't guarantee the compatibility and reliability of its products. When users use the products, they must conform to the contents in the specifications. If consumers purchase the peripheral equipment from third parties, which will be connecting to the Tablet PC, please conform to the equipment specifications, correctly connecting the peripheral equipment and Tablet PC, and installing corresponding driver program under the operating system supporting the equipment. As there are a lot of peripheral equipment manufacturers on the market, in order to guarantee the benefits of consumers, we recommend consumers to purchase quality-guaranteed products from famous manufacturers. In case that the third-party peripheral equipment are incompatible to the Tablet PC, consumers should contact the third-party manufacturers.

As for software presented with the Tablet PC (all the pre-installed software are presented software with the Tablet PC, they are free of charge for users), the company can guarantee the functionality and compatibility of its software. Users should refer to the user's guide for correctly using the special requirement by the software, most genuine software on the market, except for the special requirement by the software, most genuine software can run normally on the Tablet PC. In order to guarantee the consumers' benefits, users are advised to purchase genuine software from official channels. As for any third-party software independently purchased and installed by users, users should follow the specifications for correct. In case that the third-party software is incompatible to the Tablet PC, consumers should contact the third-party manufacturers.

It recommend that before users purchase hardware or software from third parties, they can only purchase after the third-party manufacturers or distributors pass relevant test in order to guarantee their interests. As for problems on third-party hardware or software, the Tablet PC cannot guarantee customers' requirement for goods returning and changing .The company can supply technical support.

8.0 Annex A:Product Specifications

System	Windows 8.1
CPU	Broadwell Y
System memory	On board 2G/4G (Option)
Storage	SSD: 64G/128G/256G (Option)
Panel	11.6” TFT LED screen resolution of1366*768/1920*1080 (Option)
Electromagnetic	Electromagnetic screen + Electromagnetic pen (Option)
Touchpanel	11.6 ”capacitance Touchpanel
Card Reader	Support Micro SD Card
Wireless network	1 NGFF Slot for wifi/BT card 3G+GPS +SIM SLOT (OPTION1) 3G ULTRASTICK SLOT (OPTION) 3G ON BOARD(OPTION) 4G+GPS+ SIM SLOT (OPTION)
Digital Camera	front Camera:2.0M; Rear Camera:5.0M
Sensor	G-Sensor Gyroscope(Option) E-compass Ambient light sensor (Option)
Power Supply	12V/3.0A power adapter
Battery	6000mAH Lithium Battery
Size	296.3x189.75x11.4MM
Weight	About 850g

Note: As the specifications and configuration of the computer are being updated quickly, there shall be no prior notice if there is any change on the product specifications. The configuration of computer purchased by users shall be the final result.

Company: EA Excelsior Hangtong Computer Technology Co.,Ltd.

Address: 11F, Block A, Tsinghua Unis Infoport, Langshan Rd, Hi-Tech Industrial, Nanshan, Shenzhen, China

Contact Person: Ericyang

TEL: 86-755-8835399-820

E - mail: jidong.yang@eascs.com

FCC RF Exposure Information and Statement

The SAR limit of USA (FCC) is 1.6 W/kg averaged over one gram of tissue. Device types 2in1 (FCC ID: 2AD5QW23) has also been tested against this SAR limit. The highest reported SAR values for body is 0.3858 W/kg, This device was tested for typical body-worn operations with the back of the 2in1 kept 0mm from the body. To maintain compliance with FCC RF exposure requirements, use accessories that maintain a 0mm separation distance between the user's body and the back of the 2in1. The use of belt clips, holsters and similar accessories should not contain metallic components in its assembly. The use of accessories that do not satisfy these requirements may not comply with FCC RF exposure requirements, and should be avoided.

FCC Warning

This device complies with Part 15 of the FCC Rules. Operation is subject to the following two conditions:

(1) This device may not cause harmful interference, and (2) this device must accept any interference received, including interference that may cause undesired operation.

NOTE 1: This equipment has been tested and found to comply with the limits for a Class B digital device, pursuant to part 15 of the FCC Rules. These limits are designed to provide reasonable protection against harmful interference in a residential installation. This equipment generates, uses and can radiate radio frequency energy and, if not installed and used in accordance with the instructions, may cause harmful interference to radio communications. However, there is no guarantee that interference will not occur in a particular installation. If this equipment does cause harmful interference to radio or television reception, which can be determined by turning the equipment off and on, the user is encouraged to try to correct the interference by one or more of the following measures:

- Reorient or relocate the receiving antenna.
- Increase the separation between the equipment and receiver.
- Connect the equipment into an outlet on a circuit different from that to which the receiver is connected.
- Consult the dealer or an experienced radio/TV technician for help.

NOTE 2: Any changes or modifications to this unit not expressly approved by the party responsible for compliance could void the user's authority to operate the equipment.