

# Do Not Return Card



**IMPORTANT**



**PLEASE DO NOT RETURN TO STORE**

If You're Having Trouble, We're Here to Help!



Call us 24/7 at 1-855-292-4087

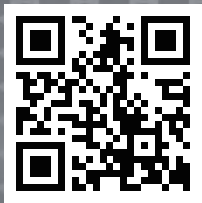
E-mail us at [alsupport@sakar.com](mailto:alsupport@sakar.com) or visit us at [alteclansing.com](http://alteclansing.com)



# WELCOME



Thank you for purchasing an Altec Lansing product. Download our App to unlock all the features our products have to offer!



**ALTEC**  
LANSING



**JUST LISTEN.**

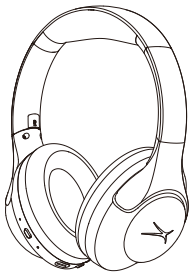


MZX772

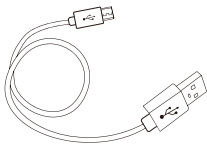
AL ComfortQ2.0 ANC

QUICK START GUIDE

**In the Box**

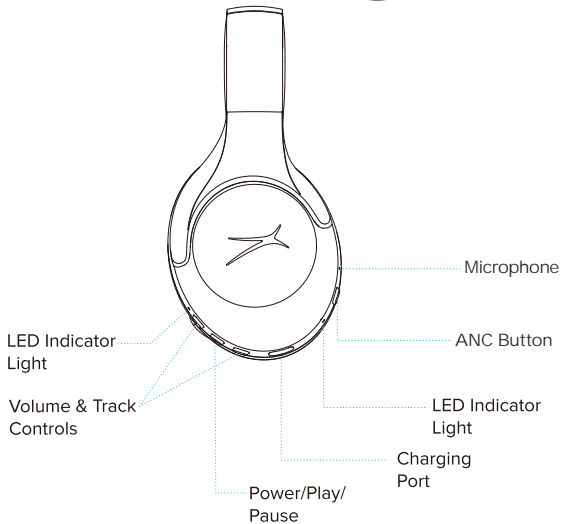


MZX772 AL ComfortQ2.0 ANC  
Headphones



USB-C Charging Cable

## A Closer Look



# Charging



Low battery



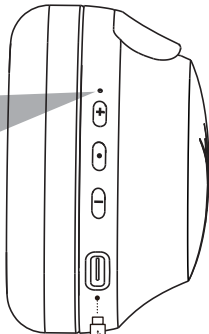
Charging



Fully Charged  
turn off

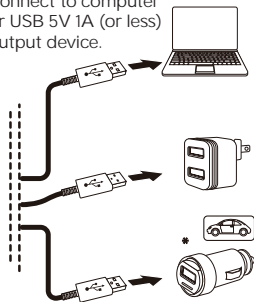


Connect the USB-C cable into the charging port to charge the headphone.

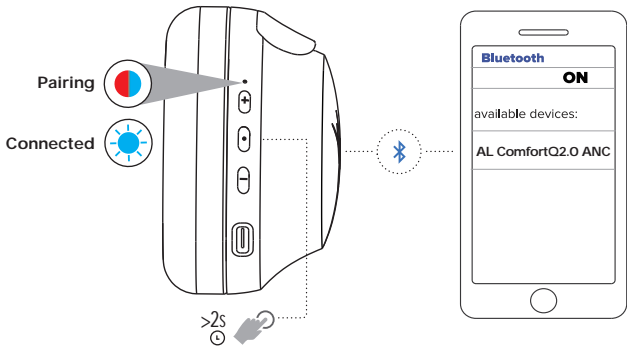


Charge

Connect to computer or USB 5V 1A (or less) output device.



## Powering On Bluetooth Pairing



Powering On and  
automatically enter pairing mode

\* To enter pairing mode again, power o  
and then hold **PowerButton** for 5 seconds

# **REGISTER YOUR PRODUCT**

**To receive news, exclusive deals, OTA or  
firmware updates, warranty information and  
more please register your product at**

**[alteclansingsupport.com](http://alteclansingsupport.com)**







follow us

@altec Lansingofficial



follow us

@altec Lansing



follow us

@altec Lansingofficial

## 12 Month Limited Warranty

All Altec Lansing products come with  
12 month limited warranty  
from the date of its original purchase

## 24 Hour Customer Support

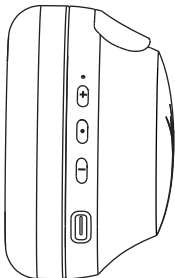
We love our customers, and we care  
about your experience with Altec  
Lansing. If you need  
assistance, please call us at  
1.855.292.4087

or e-mail [alsupport@sakar.com](mailto:alsupport@sakar.com)

[www.altec Lansing.com](http://www.altec Lansing.com)

Altec Lansing Edison, NJ 08817

## Control Functions



- Press once to **increase volume**
- Press and hold to **skip forward**

- Press once to **play, pause, or answer, end a phone call**



- Press twice to **activate Siri or other voice control software**

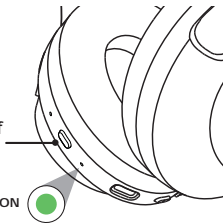


- Press and hold 2s to **reject incoming calls**
- Press and hold to **power ON or OFF**



- Press once to **decrease volume**
- Press and hold to **skip back**

- Press **once** to cycle Noise Cancelling **On** and **Off**
- Press **twice** to cycle Low Latency **On** and **Off**



ANC ON

## Multi-Point Connection



FIRST  
device

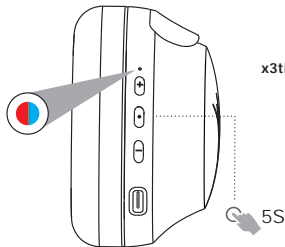


SECOND  
device

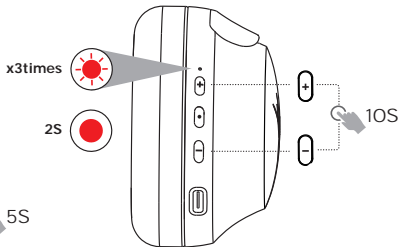


1. Once FIRST device is connected, turn off Bluetooth in device settings. Headphone will auto enter Bluetooth Pairing.
2. Enter your SECOND device Bluetooth settings and connect to headphone
3. Enter your FIRST device settings. Turn on Bluetooth and reconnect to headphone

## Manual Reset



- 1** When Power is off, press and hold the power button for 5 seconds until the light flashes **blue and red**



- 2** Keep holding +/- buttons simultaneously for 10 seconds until you see the **red light flashing 3 times** and turn **solid red for 2 seconds**. Headphone power **OFF** automatically

## Notes



\*To use voice assistant, you must have a phone that is equipped with a voice assistant.

\*You must be within Bluetooth range to use voice assistant via your Wireless Headphone.

Your Wireless Headphone voice assistant feature will not work if a voice assistant is not first enabled within the settings on the phone. For more information, see your phone's user manual.

For additional user materials and  
warranty information, please  
visit [alteclansing.com](http://alteclansing.com)







## FCC ID: 2AD5N-C11

### Warning

To assure continued compliance, any changes or modifications not expressly approved by the party. Responsible for compliance could void the user's authority to operate this equipment.

### FCC Statement

This equipment complies with Part 15 of the FCC Rules. Operation is subject to the following two conditions:

- (1) This device may not cause harmful interference, and
- (2) This device must accept any interference received, including interference that may cause undesired operation.

**NOTE:** This equipment has been tested and found to comply with the limits for a Class B digital device, pursuant to part 15 of the FCC rules. These limits are designed to provide reasonable protection against harmful interference in a residential installation. This equipment generates, uses and can radiate radio frequency energy and, if not installed and used in accordance with the instructions, may cause harmful interference to radio communications.

However, there is no guarantee that interference will not occur in a particular installation. If this equipment does cause harmful interference to radio or television reception, which can be determined by turning the equipment off and on, the user is encouraged to try to correct the interference by one or more of the following measures:

- Reorient or relocate the receiving antenna.
- Increase the separation between the equipment and receiver.
- Connect the equipment into an outlet on a circuit different from that to which the receiver is connected.
- Consult the dealer or an experienced radio/TV technician for help.

### FCC Radiation Exposure Statement:

The device has been evaluated to meet general RF exposure requirement.

The device can be used in the portable exposure condition without restriction.

FOLLOW US ON



#myalteclansing