

Smart Key Band

MWB-300 Quick Start Guide

/ Package Contents /



Smart Key Band



Charging Cradle



Additional Short Strap

- i** The supplied items are designed only for this Smart Key Band and may not be compatible with other devices.
- i** Do not expose the charging cradle to water because it does not have same water- and dust-resistance certification as the Smart Key Band.

/ Turn the Smart Key Band on or off /



Ⓣ Full Touch Screen (Touch type) : Menu Change (Up/Down/Left/Right Slide)
Order Select (Touch input)

Ⓢ Side Key (Push type) : Turn On, Wake-up, Move Menu, Return to the Watch screen
To turn off the Smart Key Band, long press and hold the Watch screen

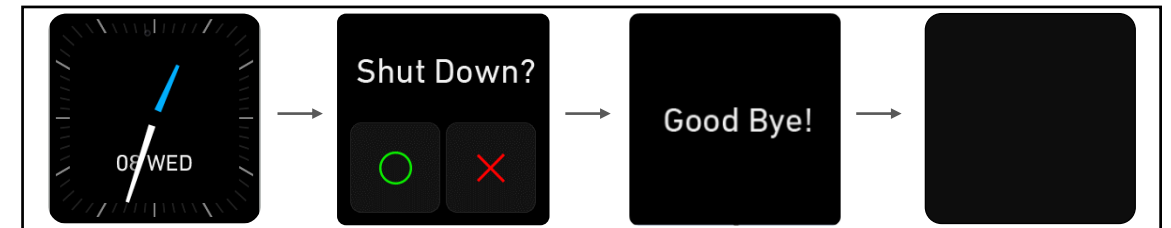
■ Turn on the Band



Press and hold the Side Key for a few seconds to turn on the Smart Key Band, and then Watch screen on after Logo.

i When the Smart Key Band is synced with the "Mobis Band" app, It can setting the watch.

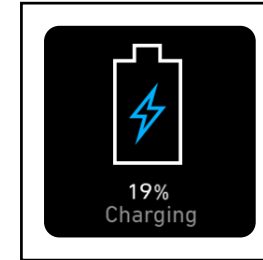
■ Turn off the Band



On the Watch screen, press and hold the Side Key for a few seconds to display "Shut Down?". Press the  , and then turn off the Band.

/ Charging the Battery /

- When you use the Smart Key Band for the first time after purchasing, fully charge the battery.
- Place the Smart Key Band into the charging Cradle aligning the Side key of Smart Key Band with the hook groove position of the charging cradle.
- Please check if the battery charging screen is displayed.
- If you can not see it, try again put the Smart Key Band in the charging cradle.



- ⚠ The charging cradle's USB connector must be connected with an 5V output certified charger.
- ⚠ The Smart Key Band can not operated while charging.



/ Connecting the Smart Key Band to a mobile device /

Download “Mobis Band” app

To connect your Smart Key Band to a mobile device, install “Mobis Band” app on the mobile device.

Depending on your mobile device, you can download the “Mobis Band” from the following places:

- Android devices : Play Store
- Apple iOS devices : Apple App Store

i “Mobis Band” app is support to devices running Bluetooth 4.2 or above, Android 4.4 or above, and iOS 9.0 or above.



Running app to connect the Smart Key Band

- 1) Turn on the Smart Key Band and Turn on the Bluetooth your mobile device.
- 2) Open the “Mobis Band” app on your mobile and then select the product at intro screen.
- 3) Press “Start” button after check the tutorial.
- 4) Press confirm button after input profile on “Setting Profile” screen.
- 5) Connect to select your Smart Key Band at “Connecting Band” screen from the App screen.

i The Bluetooth address of the Smart Key Band can be checked on “System Info” screen of your Smart Key Band. (Please refer to the next page)

Connection method and screen may vary depending on your mobile device and software version.

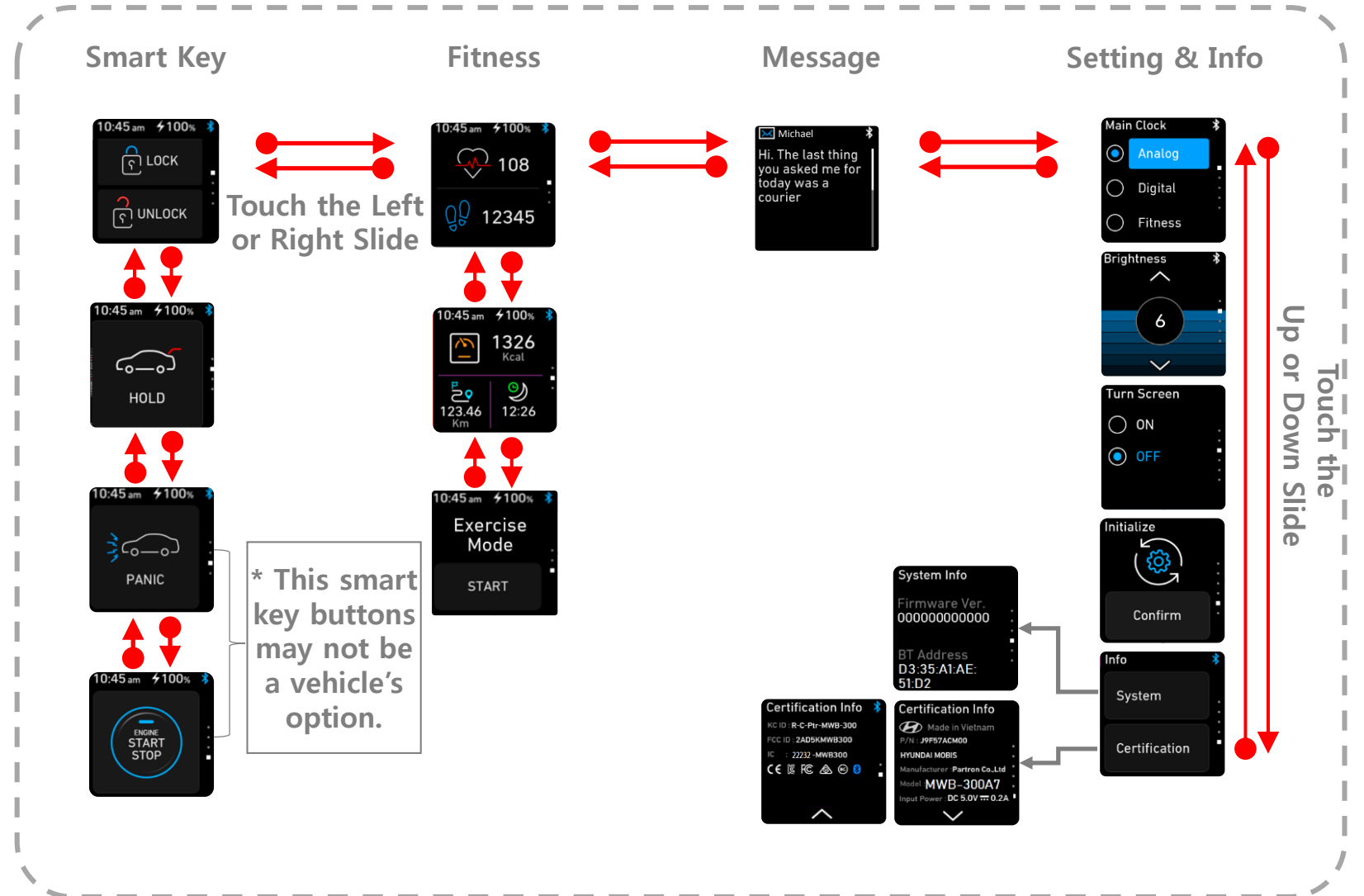
Supported mobile device and features may vary depending on your region, service provider, and device manufacturer.

/ User Interface Infographic /



Press the Side key

- i** If your Smart Key Band is frozen and unresponsive, press and hold the Side key for more than 10 seconds to restart it.
- i** If you use multiple apps at the same time, the Band app may be automatically terminated depending on your mobile system, the Smart Key Band may be disconnected with Bluetooth of your mobile device.



/ Using Smart Key/

You use a Smart Key Band, which you can use to lock or unlock a door (and tailgate) and even start the engine.

1. Door Lock
2. Door Unlock
3. Tailgate Unlock
4. Panic
5. Engine Start/Stop

■ Locking

To lock :

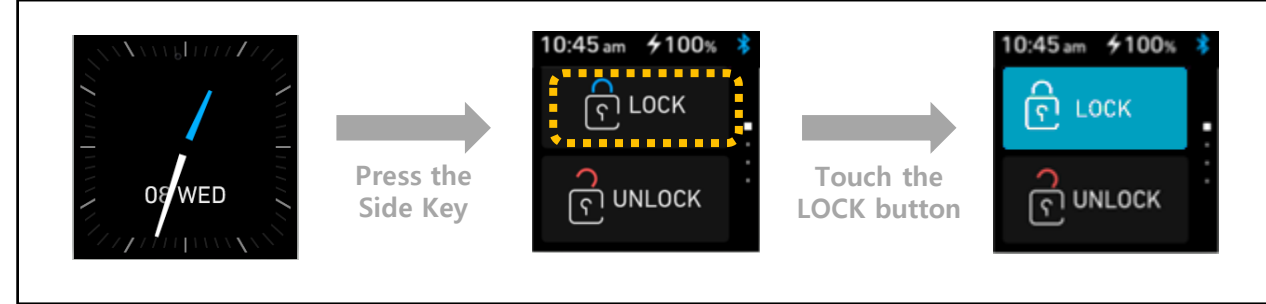
1. Close all doors, engine hood and tailgate.
2. Either press the door handle button or press the Door Lock button on the Smart Key Band.
3. The hazard warning lights will blink. Also, the outside rearview mirror will fold, if the outside rearview mirror folding switch is in the AUTO position.
4. Make sure the doors are locked by checking the position of the door lock button inside the vehicle.

i Information

The door handle button will only operate when the smart key is within 0.7~1 m (28~40 in.) from the outside door handle.

Even though you press the outside door handle button, the doors will not lock and the chime will sound for three seconds if any of the following occur:

- The Smart Key is in the vehicle.
- The Engine Start/Stop button is in ACC or ON position.
- Any door except the tailgate is open.



⚠ WARNING

Do not leave the Smart Key Band in your vehicle with unsupervised children. Unattended children could press the Engine Start/Stop button and may operate power windows or other controls, or even make the vehicle move, which could result in serious injury or death.

※ To use the smart key functions, you must to register your Smart Key Band with other smart key on the vehicle.

■ Unlocking

To unlock :

1. Carry the Smart Key Band.
2. Either press the door handle button or press the Door Unlock button on the Smart Key Band.
3. The doors will unlock. The hazard warning lights will blink two times.

i Information

- The door handle button will only operate when the smart key is within 0.7~1 m (28~40 in.) from the outside door handle. Other people can also open the doors without the Smart Key Band in possession.
- After unlocking the doors, the doors will lock automatically after 30 seconds unless a door is opened.

■ Tailgate Unlocking

To unlock

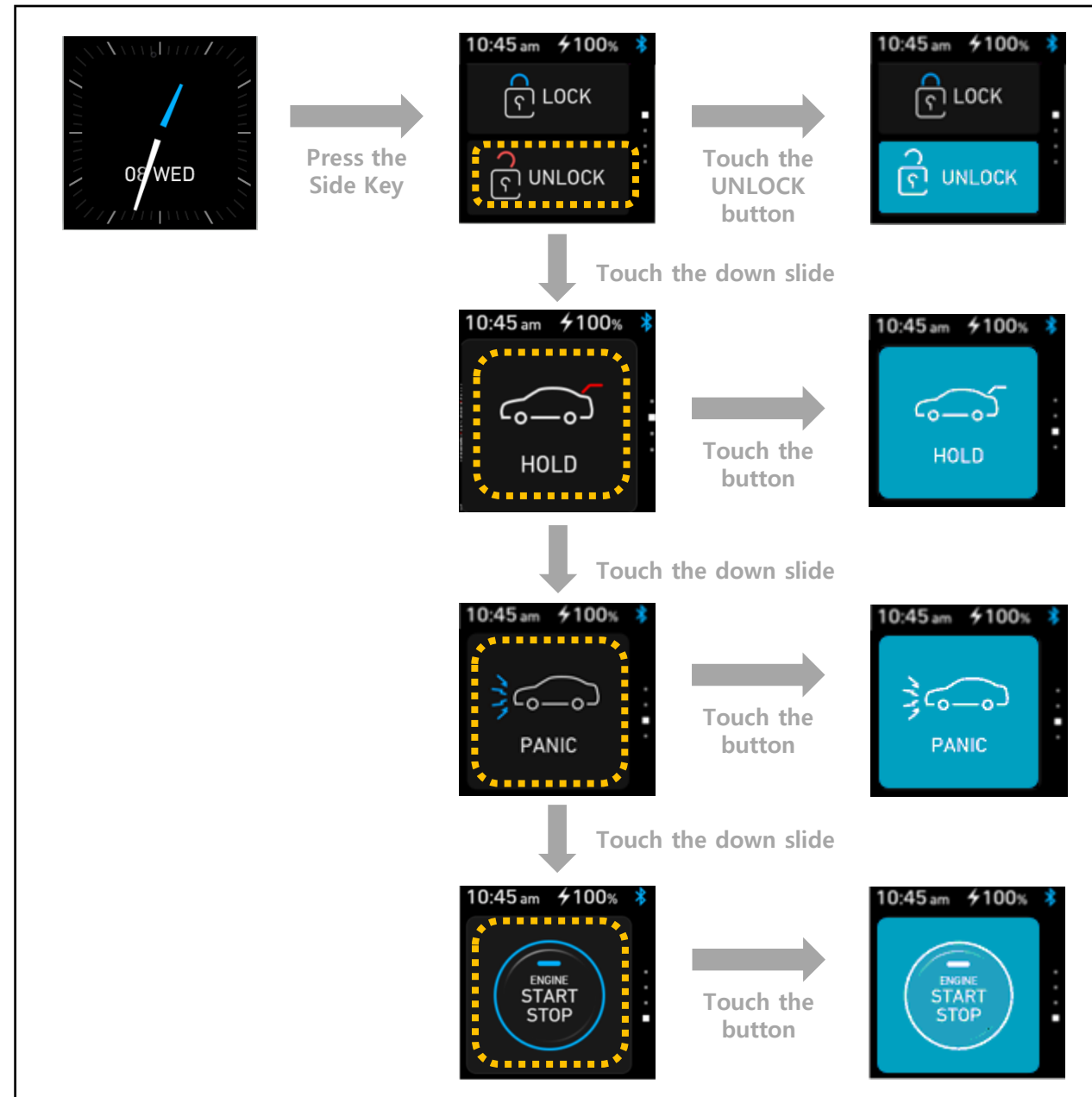
1. Carry the Smart Key Band.
2. Either press the tailgate handle button or press the Tailgate Unlock button on the Smart Key Band for more than one second.
3. The hazard warning lights will blink two times.

i Information

- The Tailgate Unlock button will only unlock the tailgate. It will not release the latch and open the tailgate automatically. If the Tailgate Unlock button is used, someone must still press the tailgate handle button to open the tailgate.
- After unlocking the tailgate, the tailgate will lock automatically after 30 seconds unless the tailgate is opened.

■ Start-up

You can start the engine without inserting the key. For detailed information refer to the Vehicle Owner' Manual.



■ Loss of a Smart Key Band

If you happen to lose your Smart Key Band, it is recommended that you should immediately take the vehicle and remaining key to your authorized HYUNDAI dealer or tow the vehicle, if necessary.

■ Smart Key Band precautions

The remote key will not work if any of the following occur:

- You exceed the operating distance limit (about 1 m [3 feet]).
- The Smart Key Band's battery is weak.
- Other vehicles or objects may be blocking the signal.
- The weather is extremely cold.
- The Smart Key Band is close to a radio transmitter such as a radio station or an airport which can interfere with normal operation of the Smart Key Band.


NOTICE


To prevent damaging the Smart Key Band:

- Avoid dropping or throwing the Smart Key Band.
- Protect the Smart Key Band from extreme temperatures.

For detailed information refer to the Vehicle Owner' Manual.


/ Smart Key Band User Manual /

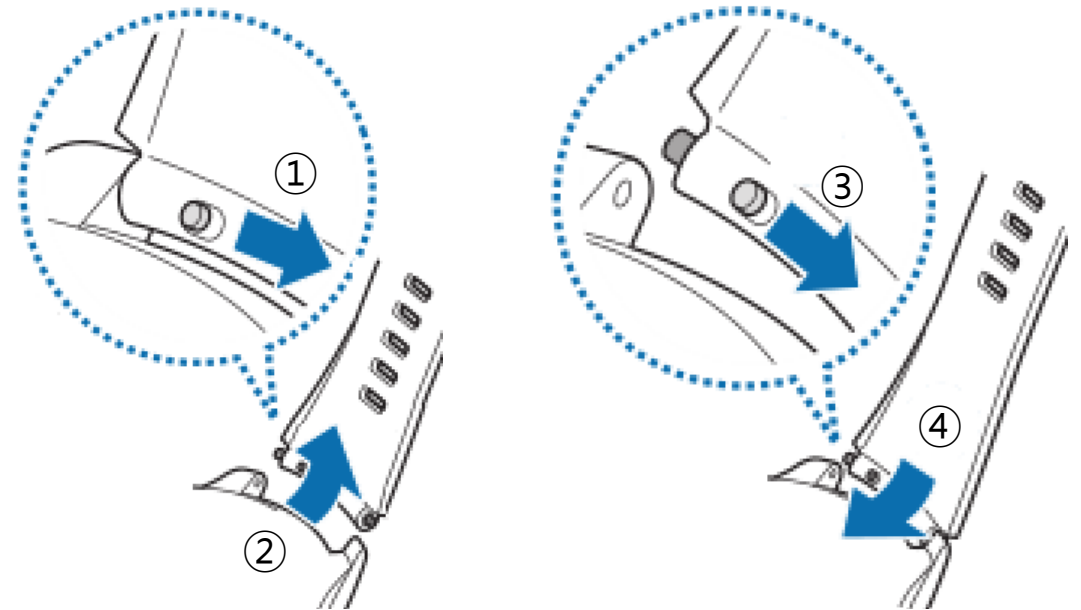
To view the For more information, open the "Mobis Band" app on your mobile device and tap  icon(top-left on the app screen) , then tap to "User Manual" at list.

 The user manual may not be supported depending on the situation of the web browser, your region, service provider, and device manufacturer.

/ Replacing the Strap /

- Slide the strap's spring bar inwards, and pull the strap away from the Smart Key Band's body.
- Insert one end of the spring bar into the Smart Key Band's lug.
- Slide the spring bar inwards, and connect the strap.

 Depending on your preference, you can replace to a commercially standard watch strap for 22mm wide.



/ Notice for measuring the heart rate /

When you activate the auto heart rate tracking feature, or when the exercise mode, the Smart Key Band will automatically track your heart rate.

When measuring your heart rate, wear the Smart Key Band on your arm above of your wrist.

If you fasten the Smart Key Band too tightly, the skin irritation may occur and if you fasten it too loosely, friction may occur.

- i** The accuracy of the heart rate measurement sensor can be affected by the user's movements, personal psychological condition and measurement conditions and environment. Measure your heart rate while sitting comfortably in your seat.
- i** Do not look directly at the light of the heart rate sensor. Your eyesight may be damaged.
- i** If your Smart Key Band becomes hot to the touch, remove it until it cools. Exposing skin to a hot surface of it for a long time may cause skin burn.
- i** This device and any software, service, function provided therein is solely intended for fitness and wellness purposes only, and is not intended for use in the diagnosis, treatment, medical treatment or prevention of diseases or other conditions.
- i** Any information that is obtained from use of the Smart Key Band , the Fitness Software or the provided application may not be suitable, accurate, complete or reliable.

/ Managing the Smart Key Band /

- When the Smart Key Band has been unused for extended periods more 3month, it may harm battery performance or reduce battery life. Keep it well after fully charge the battery and turn the Smart Key Band off.
- The battery life can vary for your environment and degree of use.
- Do not the product is dropped or impacted. It may cause failure for the function or exterior. Keep in places where vibration and shock do not occur.
- Keep the product away from fire, direct sunlight, and store in a place free from moisture, dust and pollution.
- Do not used and store your device in very hot or very cold area. It is recommended to use and store your device at temperatures from -10°C to 60°C.
- Do not store the smart key band and charging cradle in a vehicle or in direct sunlight or in a high temperature.
 - ✓ Do not exposure to strong direct sunlight or heat. It may cause leakage, overheating, or explosion of the battery, resulting in fire, burns, or other disasters. In addition, high temperatures can cause external deformations or other damage.
- When connecting the charging cradle to charge the product, check the connection direction of the charger terminal and the cradle USB cable. Do not apply excessive force.
- Do not leave the Smart Key Band where high pressure water (tap water, waterfalls and waves) can be splashed on the product, or use it underwater.
- Do not use when water sports such as diving, swimming, snorkeling.
 - ✓ Your device has been tested in a controlled environment and certified to be water- and dust-resistant in specific situations and conditions. (Meets the requirements of the water- and dust-resistance as described by the international standard IEC 60529 IP68.)
However, it may not resist water and may become damaged by water in certain circumstances.
- If the product or your hands is wet by water, It must to completely dry after wipe a soft towel.
- If the product is exposed to liquid (such as brine, pool water, soap, oil, perfume, sun cream, hand cleaner, cosmetics, etc.), immediately rinse with clean water and completely dry. It may cause failure for performance or exterior.
- Do not clean the product with soap, detergent, abrasive material, compressed air, ultrasonic. Do not use a heating device such as a hair dryer.

/ Precautions for Safety /

Read all precautions for safety before using the Smart Key Band to ensure safe and proper use.



Warning!

- Do not open, disassemble, modify, break, bend, crush, deform, press or make a hole on the product. It may cause fire or failure and no further warranty service provided by the manufacturer.
- Do not use the product when damaged or battery exposed. It may cause a fire, burn, injury or electric shock.
- Do not leave the product in a high temperature or humidity such as inside a vehicle, in a spa and bathroom, on a electric pad. The product may be exterior deform, break or explode.
- If the product break, feel overheating, smoke or smells like burning, stop using it immediately and remove it from your wrist. It may cause a fire, burn, injury or electric shock.
- Do not clean with flammable materials such as benzene, thinner, etc. It may cause a fire.
- Use only the 5V output certified charger. The warranty does not cover occurred damage, fire or failure by using the uncertified charger.
- Keep the electrodes of the product or charging cradle away from conductive materials. (metal, liquid, etc.)
- Do not use or store in a place such as humid, volatile material or fire.
- Do not place the product in put it in a fire or heat it. The battery may bulge or explode.
- Do not drop or impact the product. It can be damaged or deformed, causing water leakage.
- Keep out of reach of pets or children. It can a choking hazard or battery explosion.
- If your skin is hyper-sensitive or you have allergic by metal, rubber or silicon materials, do not use the product.
- Do not check the phone notification or other data shown in the product display in circumstances that while driving or can cause risks by negligence.

/ Product Service Criteria /

Type of Customer Damage		Within Warranty Period	After Warranty Period	
When defects in performance and function occurred during normal use	When important repairs are necessary within 1 year after purchase		Exchange	-
	Repairable	Up to 3 failures by same defect	Free Repair	Paid Repair
		Up to 4 failures by same defect	Exchange	Paid Repair
	No repairable	Within inventory holding period	Exchange	Refund by adding % to depreciation
When defects in performance and function occurred by user mistake	Repairable		Paid Repair	Paid Repair
	Non-repairable (except to no repairable by impact, fire, ingress water, damage and etc.)		Exchange after collecting cost for paid repair	-

i If the defect is obvious, contact your sales first. When the product is defective due to manufacturing defects, it will be free repair within the warranty period from the date of purchase. When you request repair, you must bring the warranty card and receipt.

■ **The warranty does not cover failure or damage caused by:**

- Use of non authorized/non-standard, defective or incompatible parts
- Disassembled, modification, reproduced or other work carried out on the product
- Failure or damage caused by user mistake or mishandling (Ingress water, Dropping, Shock, Breakage, Excessive operation etc.)
- Failure or damage caused by use to uncertified consumable parts and accessories (Charger, Battery, etc.)
- Failure or damage caused by not observing way of use and precautions in manual
- Failure caused by natural disasters (Fire, Flooding, abnormal power source, thunderstorm etc.)
- When the consumable part is normal wear and tear or is already used (battery, strap already in use, Cable of charging cradle)

/ Warranty Card /

Product Name	SMART KEY BAND
Date of Purchase	
Place of Purchase	
Model	MWB-300
Warranty Period	Within 1 year from the date of purchase (Warranty period for Battery : 6 month)

Notice on Use of Broadcasting Communication Equipment

This radio device is not allowed to provide services related to human safety as it may cause radio interface.



- i** When purchasing the Smart Key Band, please fill out this Warranty Card and keep it together with the receipt.
- i** In case the date of product purchase cannot be found, the commencement for warranty period applies from the manufacture date.
- i** Keep this warranty information safe as it will not be reissue.



Sellers : HYUNDAI MOBIS Co., LTD.

Consumer Contact :

Manufacturer : PARTRON VINA CO., LTD.

Manufactured in : Vietnam

※ The content used in the user manual may vary depending on the software version of the product. It is subject to change of support without prior notice.



FCC NOTICE TO USERS

This device complies with part 15 of the FCC rules Operation is subject to the following two conditions: (1) This device may not cause harmful interference, and (2) This device must accept any interference received, including interference that may cause undesired operation.

FCC Warning

This equipment has been tested and found to comply with the limits for a Class B digital device, pursuant to part 15 of the FCC Rules. These limits are designed to provide reasonable protection against harmful interference in a residential installation. This equipment generates, uses and can radiate radio frequency energy and, if not installed and used in accordance with the instructions, may cause harmful interference to radio communications. However, there is no guarantee that interference will not occur in a particular installation. If this equipment does cause harmful interference to radio or television reception, which can be determined by turning the equipment off and on, the user is encouraged to try to correct the interference by one or more of the following measures:

- Reorient or relocate the receiving antenna.
- Increase the separation between the equipment and receiver.
- Connect the equipment into an outlet on a circuit different from that to which the receiver is connected.
- Consult the dealer or an experienced radio/TV technician for help.

Caution: Any changes or modifications to this device not explicitly approved by manufacturer could void your authority to operate this equipment.

This device complies with part 15 of the FCC Rules. Operation is subject to the following two conditions: (1) This device may not cause harmful interference, and (2) this device must accept any interference received, including interference that may cause undesired operation.

IC Warning

"This device complies with Industry Canada licence-exempt RSS standard(s)."

Operation is subject to the following conditions: (1) this device may not cause interference, and (2) this device must accept any interference, including interference that may cause undesired operation of the device.

Le présent appareil est conforme aux CNR d'Industrie Canada applicables aux appareils radio exempts de licence. L'exploitation est autorisée aux deux conditions suivantes : (1) l'appareil ne doit pas provoquer de brouillage, et (2) l'appareil doit accepter tout brouillage radioélectrique subi, même si le brouillage est susceptible d'en compromettre le fonctionnement.