

Manual

[English]

Medical Device

The patient is an intended operator



we°TEMP

PTD-400

Non contact infrared
body thermometer

partron

Copyright © 2020 All rights reserved.

Written on : 2020 - 11

 Bluetooth®

There is a possibility of radio confusion during operation of the corresponding wireless system.

/ Product Overview /

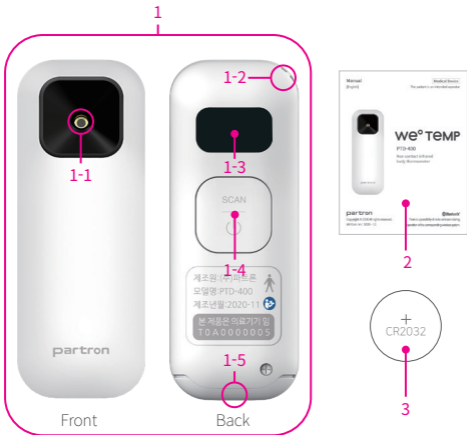
Purpose of Use

This product is a portable measuring device that can collect infrared radiation energy from the human body (forehead, below ear, etc.) through sensors to measure body temperature and manage the information. This non-contact device is used for measurement by placing the built-in sensor in the top part of the product within 3 cm of the site to be measured. An additional function to measure temperature of general objects is also included.

***APP**

Body temperature information can be checked through synching mobile app after installing GC Healthcare Corporation's "heat map" app in Play Store for Android and in App Store for iOS. It provides a guide based on body temperature, and you can check the temperature status across the country with the heat map.

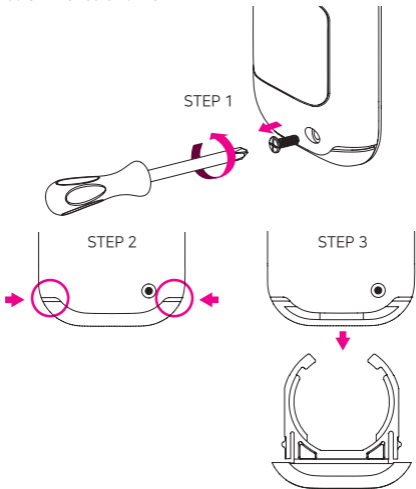
/ Product Composition - Shape and Structure /



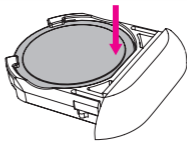
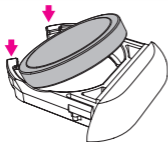
- 1. Body (1EA)
 - 1-1. Temperature sensing unit
 - 1-2. Strap hole
 - 1-3. OLED display
 - 1-4. ON / SCAN button
 - 1-5. Battery cover
 - 2. User manual
 - 3. CR2032 coin battery (1EA)
- 1 click for measurement/move**
2 clicks for selection

/ How to Replace Battery /

- Loosen the screw at the bottom of the main body with a screwdriver, press both gaps with your fingertips, then pull down to remove the battery cover.
- Place the battery fitting in the direction of insertion, close the cover and screw with screwdriver.



*How to Insert Battery

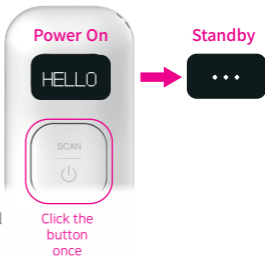


- Insert the CR2032 battery diagonally so that the battery cover gets stuck in a bump and press it to close.
- Battery should be inserted so that the surface without the specification mark is facing up.
- Insert in a way that poles are facing upwards.

/ How to Use PTD-400 /

1. Power On / Standby / Power Off

- Press the button on the main body once briefly. ("HELLO" is displayed and power gets turned on.)
- Once the body temperature measurement standby screen is displayed as (•••), body temperature measurement can be started.
- If the device is not operated for 20 seconds, the power is automatically turned off. (Pressing the button on the main body for more than 2 seconds will also turn the power off automatically.)



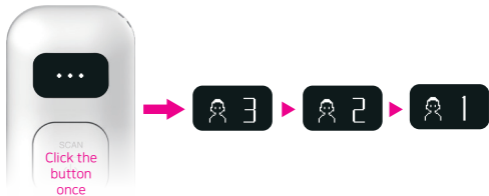
2. Setting Target to be Measured (People/Object)

- Click the button 3 times on the standby screen to enter the setting screen
- After entering the setting screen, temperature (👤) and object (📦) can be chosen by clicking twice on the measurement target icon.



3. Measuring Body Temperature / Checking Previous Measurement Records

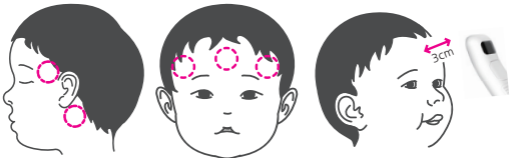
- Select a temperature measurement on the setting screen.
- On the standby screen, place the thermometer in the center of the forehead above the eyebrow and press the button on the main body once.
- With vibration, numbers "3, 2, 1" will be displayed and then measurement will be started.



- Click the button twice on the standby screen to enter the previous measurement records.
- On the previous measurement records screen, click the button once to start the temperature measurement.



***Check body temperature measurement position before starting measurement.**



- Measure at the center or end of the forehead while keeping the thermometer with a distance of about 3 cm to avoid contact with the skin
- If the temple or forehead above the eyebrows is covered with hair or cannot be measured, measure the center of the forehead or the back of the ear.
- Body temperature may vary depending on the site: left and right temple, or left and right forehead area. It is recommended that you always measure on the higher side according to the measurement method in the manual.

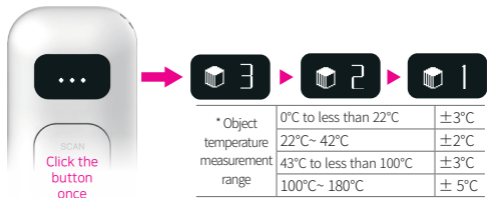
4. Display of Body Temperature

- When the temperature measurement is complete, the device will be vibrated, and the measured temperature will be displayed on the screen
- *If the measured temperature is greater than 42 degrees, it will be displayed as HIGH if less than 32 degrees, it will be displayed as LOW.



5. Measuring Object Temperature

- Select an object temperature measurement on the setting screen.
- Click once on the standby screen while maintaining the distance from the measurement target.
- With vibration, numbers “3, 2, 1” will be displayed and then measurement will be started.



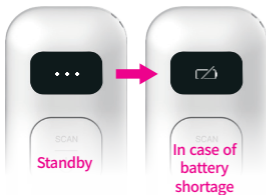
6. Changing Temperature Unit

- 1) Click the button 3 times on the standby screen to enter the setting screen.
- 2) Click the button once on the setting screen to enter the temperature unit setting screen.
- 3) Click the temperature icon °C (or °F) twice to change the temperature unit.




7. Battery Replacement Alarm

The standby screen will be changed to battery warning screen when there is no residual amount and temperature data will still be displayed. (It will remain the same until battery is completely exhausted.)



***Please remove the battery if the device is not in use for a long time.**

/ In the Event of Abnormalities /

Error message	Abnormality	Solution
	It will display this message when the room temperature is outside the operational temperature range of 15°C to 40°C.	<ul style="list-style-type: none">- Leave the thermometer for at least 30minutes in the ambient temperature environment available before measurement.- If the same message is displayed afterwards, contact the customer service center.

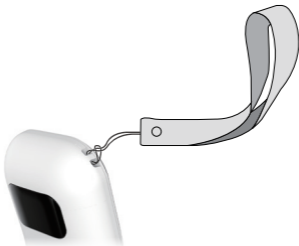
/ Product Storage and Care /

1. As the sensor part is very sensitive, always keep it clean and not damaged for accurate measurements.
2. Avoid fire and direct sunlight and store in a place free of dust or pollutants.
3. Store it in a place out of water.
4. Store it in a place where vibration or shock does not occur.
5. We recommend keeping the product at room temperature, and if it is stored outside of room temperature, keep it at room temperature for 30 minutes before use.
6. In case of sensor and case contamination, carefully wipe with a cotton swab or alcohol cotton coated with ethylalcohol 70% diluted solution. (Recommended to use about 20 minutes after cleaning the sensor)

- * This product has a magnet built into the front of the main body, so it can be stored on a wall made of steel.



- * It can be carried and stored using the strap hole at the top of the main body. **(The strap is not included in the product package.)**





Check the precautions when measuring body temperature!

1. The person being measured must remain stable indoors for at least 30 minutes.
2. Prior to measurement, the sensor must be checked for foreign substances before use. (If there is a foreign substance, the measurement may be incorrect, or an alarm will be displayed to recommend re-measurement.)
3. It is recommended to measure with 3 cm distance away from the skin and be careful not to move the thermometer until it is vibrated after measurement. (If moved, the measurement may be incorrect, or an alarm will be displayed to recommend re-measurement.)
4. Incorrect temperature measurement sites or posture may result in inaccurate readings.
5. The person being measured should not drink beverages or eat food or engage in physical activities while measuring body temperature.
6. When measuring body temperature, remove foreign substances (dust, sweat, hair, etc.) from the measurement site before taking measurements.
7. For infants and children, if they struggle and refuse to take measurements, it is impossible to accurately measure the body temperature as the distance between the skin and the sensor does not remain constant. So please calm them down before measuring it.
8. It is recommended to measure your body temperature 30 minutes after exercise, bathing, and getting back home.
9. It is recommended to measure at the same site as body temperature may vary slightly from one area to another.
10. Measure it on the forehead between the eyebrows. The temperature distribution may vary depending on the location of the forehead.
- 11) Repeat the measurement more than 3 times in the following situations:
 - Infants within 90 days of birth

- Infants under 3 years of age whose body temperature is shown outside the average temperature range.
- If the product is used for the first time or has no experience of using a similar product.



Precautions for Use

Thank you for purchasing PTD-400 (Infrared Body Thermometer).

As this thermometer is a household “medical device,” it is recommended to fully understand the functions of the product for safe use and stable performance and to familiarize yourself with the user manual for use and follow-up management. If the product is damaged due to careless use, customer service may not be provided.

The temperature measurement using this product cannot be substituted for consultation or treatment with a specialist or pediatrician, and if there is any abnormality in the measured temperature value, be sure to consult a specialist or pediatrician.

1. This product is a general home medical device that requires no special skills or training but requires knowledge of the level to understand letters and illustrations and to understand instructions (11 years of age or older).
2. If it is used close to a high-energy high-frequency generating device, avoid using it together as it may affect the measured value due to mutual interference.
3. Avoid using this device in close proximity to other devices, as the electromagnetic effects of this product may cause other devices to malfunction, and the electromagnetic effects of other devices may cause this device to malfunction.
4. This product must be used only for specified purposes and should not be used for other purposes.

5. This product is made of precise parts. Do not drop this product or give shock.
6. Do not put the product in your mouth to measure your body temperature.
7. Do not attempt to repair and disassemble the product at your discretion.
8. Be careful not to swallow the coin battery, screw and battery cover.
9. Use only Li, CR2032 coin battery.
10. After replacing the battery, close the cover completely and turn it on.

"Warning: Use of this equipment adjacent to or stacked with other equipment should be avoided because it could result in improper operation. If such use is necessary, this equipment and the other equipment should be observed to verify that they are operating normally."

"Warning: Use of accessories, transducers and cables other than those specified or provided by the manufacturer of this equipment could result in increased electromagnetic emissions or decreased electromagnetic immunity of this equipment and result in improper operation."

"WARNING: Portable RF communications equipment (including peripherals such as antenna cables and external antennas) should be used no closer than 30 cm (12 inches) to any part of the [ME EQUIPMENT or ME SYSTEM], including cables specified by the manufacturer. Otherwise, degradation of the performance of this equipment could result."

"WARNING: The user and/or patient that any serious incident that has occurred in relation to the device should be reported to the manufacturer and the competent authority of the Member State in which the user and/or patient is established."

FCC Compliance Information

FCC ID : 2AD5K-PTD400

This device complies with part 15 of the FCC Rules. Operation is subject to the following two conditions : (1) This device may not cause harmful interference, and (2) this device must accept any interference received, including interference that may cause undesired operation.

Note : This equipment has been tested and found to comply with the limits for a Class B digital device, pursuant to part 15 of the FCC Rules. These limits are designed to provide reasonable protection against harmful interference in a residential installation This equipment generates, uses and can radiate radio frequency energy and, if not installed and used in accordance with the instructions, may cause harmful interference to radio communications, However, there is no guarantee that interference will not occur in a particular installation. If this equipment does cause harmful interference to radio or television reception, which can be determined by turning the equipment off and on, the user is encouraged to try to correct the interference by one or more of the following measures:

- Reorient or relocate the receiving antenna.
- Increase the separation between the equipment and receiver.
- Connect the equipment into an outlet on a circuit different from that to which the receiver is connected.
- Consult the dealer or an experienced radio/TV technician for help.

Caution : Any changes or modifications in construction of this device which are not expressly approved by the party responsible for compliance could void the user's authority to operate the equipment.

/ Product Disposal /

This product is a product that does not produce any residues harmful to the human body. In principle, it is required to separate and discharge the product in accordance with the general disposal procedure of electronic products.

/ Transportation and Storage Conditions /

- Temperature : $-40^{\circ}\text{C} \sim 70^{\circ}\text{C}$
- Humidity : 10% RH \sim 95% RH
- Atmospheric pressure : 76.0 kPa \sim 106.0 kPa

/ Operating Condition /

- Temperature : $15^{\circ}\text{C} \sim 40^{\circ}\text{C}$
- Humidity : 10% RH \sim 85% RH
- Atmospheric pressure : 76.0 kPa \sim 106.0 kPa



Refer to instruction manual



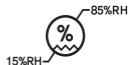
Keep dry



Keep away from sunlight



Temperature limit



Humidity limitation



Caution



Type BF Applied part



Recycling



WEEE



Atmospheric pressure limitation



Authorized representative in the European Community



0000



FCC ID :
2AD5K-PTD400



Lot number



Medical device



Manufacturer



Date of manufacture

/ Product specification /

Specification	WE - TEMP	
Product Name	Infrared body thermometer	
Item Name	PTD-400	
Purpose of Use	This is a medical device that measures body temperature	
Temperature Measurement Range	Body Measurement	32°C ~ 42°C 89.6 °F ~ 107.6 °F
	Object Measurement	0°C ~ 180°C 0 °F ~ 356 °F
Battery	CR 2032 (1EA) Supports more than 3,000 measurements: The number of measurements may vary depending on the effect of the ambient environment (temperature/humidity) and the battery in use.	
Measurement Time	Less than 5 seconds	
Measurement Method	Measure infrared released from skin by Thermopile sensor	
Display	PMOLED (0.5inch)	
Device Classification / Waterproof Rating	Continuous operation, IP22	

Resolution	0.1(Body temperature), 1(Object temperature)	
Accuracy	Body measurement	Object measurement
	<ul style="list-style-type: none"> • 32°C to less than 36°C: ± 0.3°C • 36°C ~ 39°C: ± 0.2°C • Over 39°C ~ 42°C: ± 0.3°C 	<ul style="list-style-type: none"> • 0°C to less than 22°C: ± 3°C • 22°C ~ 42°C • 43°C to less than 100°C: ± 3°C • 100°C ~ 180°C: ± 5°C
Automatic Power Cut-off	Automatic power cut-off after 20 seconds	
Dimension (WxLxH)	28.06 x 73.66 x 13.04 mm	
Weight	16.9g (Including battery)	
Operational Environment	15°C ~ 40°C (59°F ~104°F)	
Rating	DC 3V (Li, CR2032)	
Product life	5 years	
Voltage Rating	Type of protection against electric shock	Internal power type
	Degree of protection against electric shock	BF type
Bluetooth	BLE 5.0	
Data for Transmission	Body temperature	
Manufacture Date / Lot Number	Displayed in the label on product package	

/ warranty /

Product Name	WE - TEMP
Model	PTD-400
Manufacture Date/ Lot Number	Displayed in the label on product package
Place of Purchase	
Date of Purchase	
Free warranty period	within one year from the date of purchase

This product was made through strict quality control and inspection process of our company.

- The compensation criteria for product repair and exchange shall follow the "Compensation Rules for Consumer Damages" announced by the Ministry of Finance and Economy.
- In the event of a failure in normal use, our service center shall repair it for free during the warranty period.
- If there is a problem with the product during the warranty period, please notify us of the model name, manufacturing number, purchase date, and failure details.
- The manufacturer or distributor shall not be responsible for any damage or loss if a product defect occurs due to improper use or negligence in product management.

/ customer service /

For product inquiries and customer service, please contact Partron Customer Service Office.

partron

Manufacturer | partron Co.Ltd