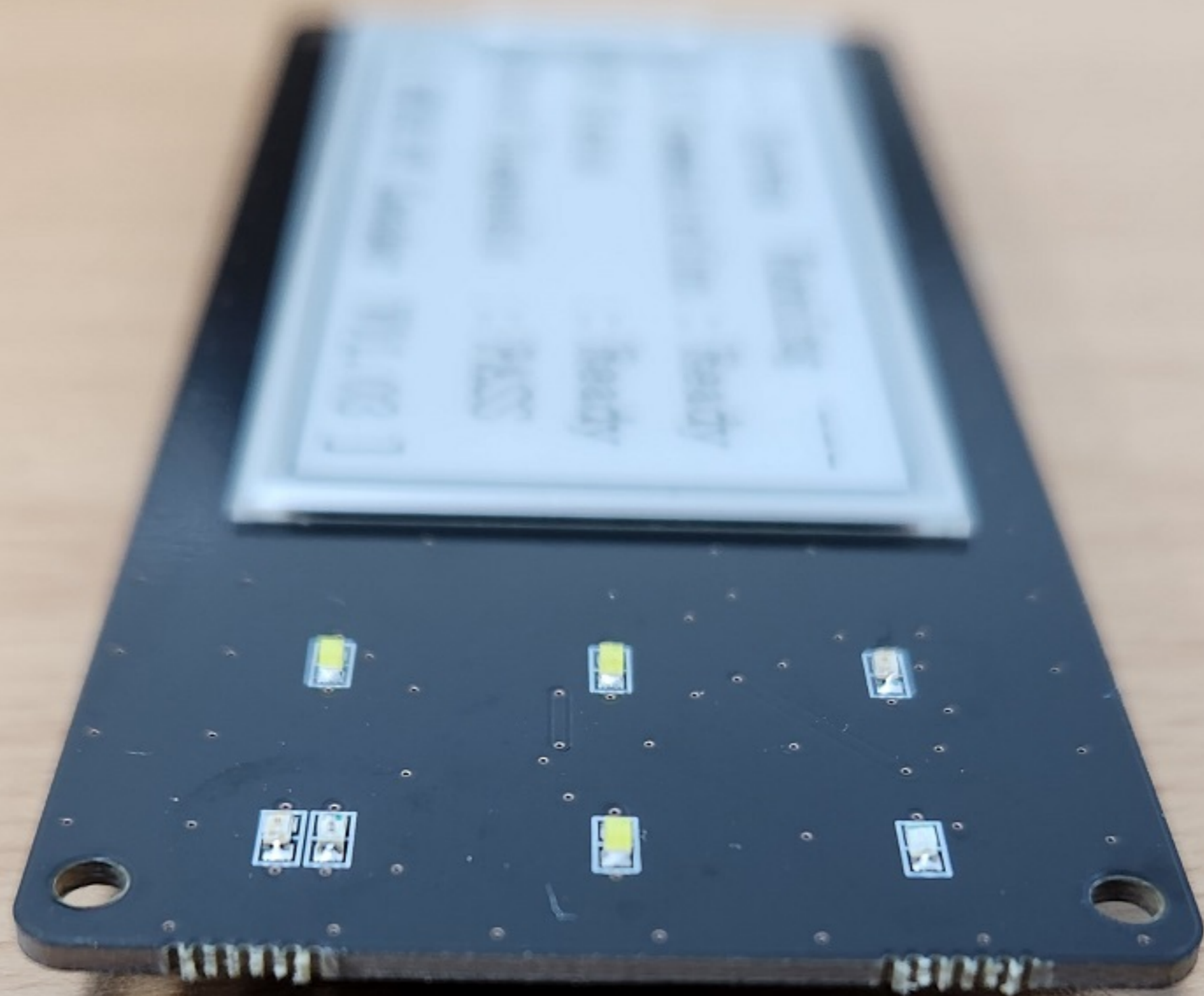
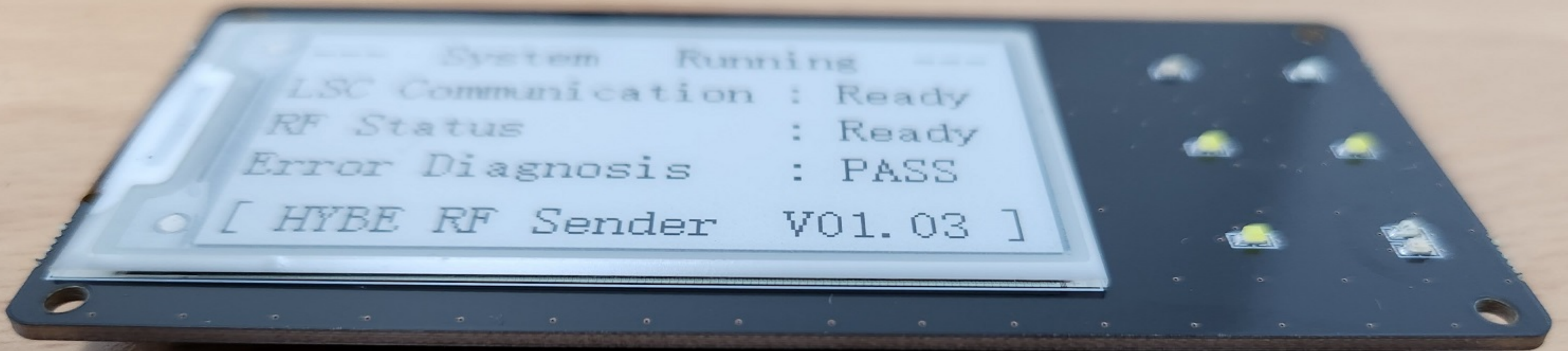


--- System Running ---  
LSC Communication : Ready  
RF Status : Ready  
Error Diagnostics : PASS  
[ HW# RF Sender V01.03 ]

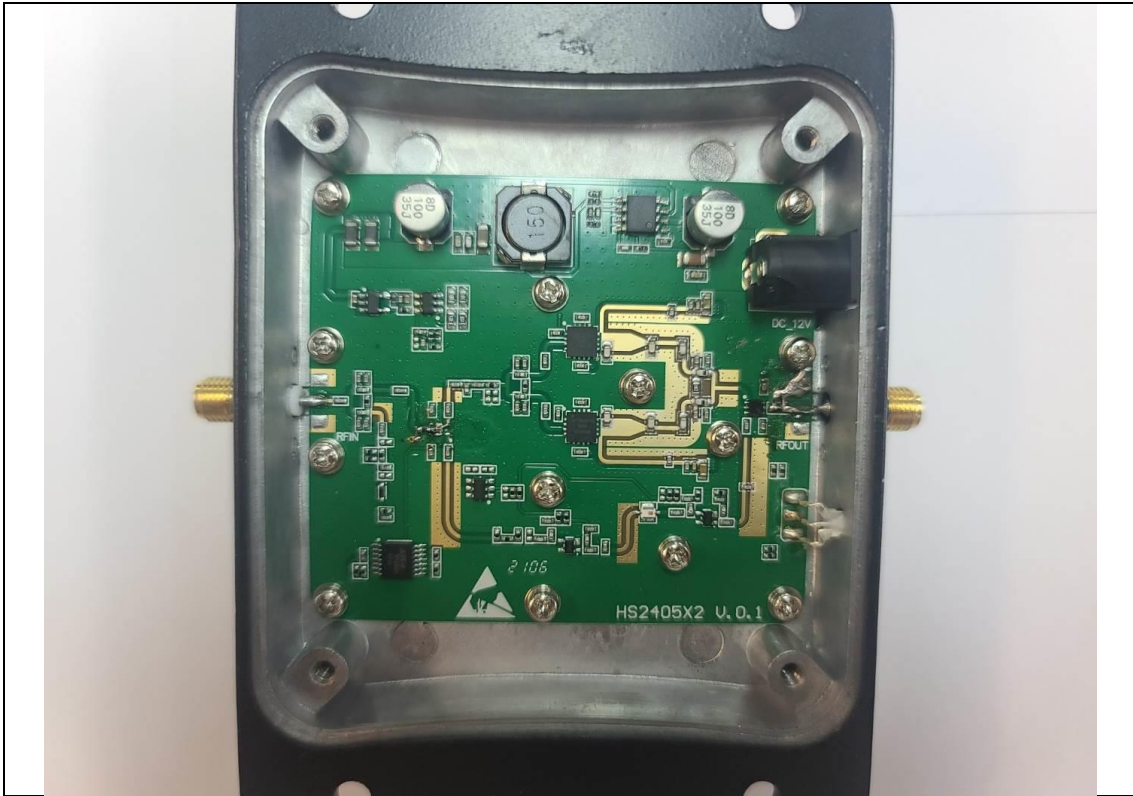


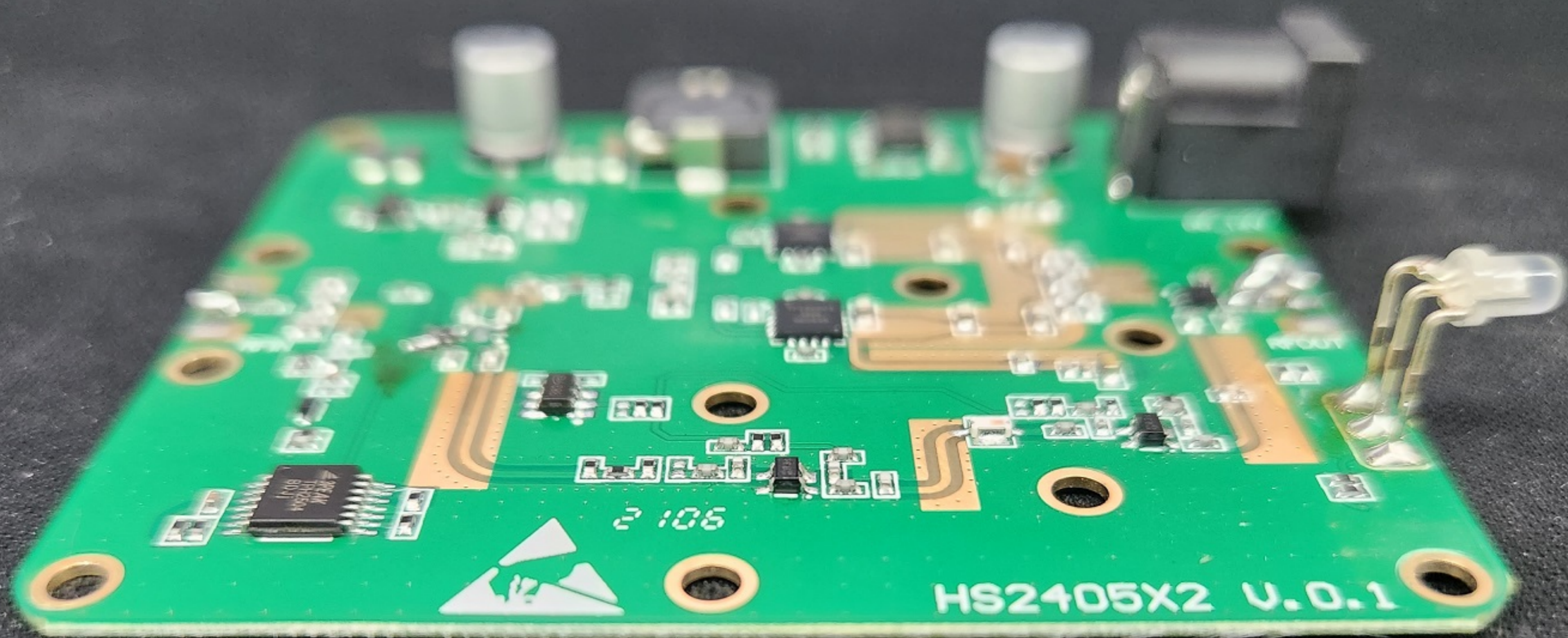


--- System Running ---  
LSC Communication : Ready  
RF Status : Ready  
Error Diagnosis : PASS  
[ HYBE RF Sender V01.03 ]



# <Sub PCB View>





2105

HS2405X2 U.O.1

