



深圳市海凌科电子有限公司

SHEN ZHEN Hi-LinK ELECTRICAL CO, LTD

# 产品规格书

## PRODUCT SPECIFICATION SHEET

Customer: \_\_\_\_\_

Product Name: 915Mhz 3.85dbi SMA Antenna

Product code: HLK-TX-915M

Customer code: \_\_\_\_\_

Sample date: 2023-2-14

HLK Confirm:

Approval	Quality	Engineer	Signature
David	Henry	lisa	

Customer Confirm:

Approval	Quality	Engineer	Signature
Confirm result:	<input type="checkbox"/> PASS	<input type="checkbox"/> NG	<input type="checkbox"/> Others



深圳市海凌科电子有限公司

SHEN ZHEN Hi-LinK ELECTRICAL CO, LTD

---

## SPECIFICATION ITEM

Item	Description
1.....	SPEC
2.....	SPEC ITEM
3.....	Engineer drawing
4.....	Performance



# 深圳市海凌科电子有限公司

SHEN ZHEN Hi-Link ELECTRICAL CO, LTD

---

## RF Antenna Cable Assembly

### Specification

#### 1. Electrical Properties

- 1.1 Frequency Range.....915Mhz
- 1.2 Impedance.....50Ω Nominal
- 1.3 VSWR.....1.92:1MAX
- 1.4 Return Loss.....-14dB Max
- 1.5 Gain(peak).....3.85dBi
- 1.6 Cable loss.....0.3dBi Max
- 1.7 Polarization.....Omnidirectional
- 1.8 Cable.....RG-178
- 1.9 Conn.....SMA

#### 2. Physical Properties:

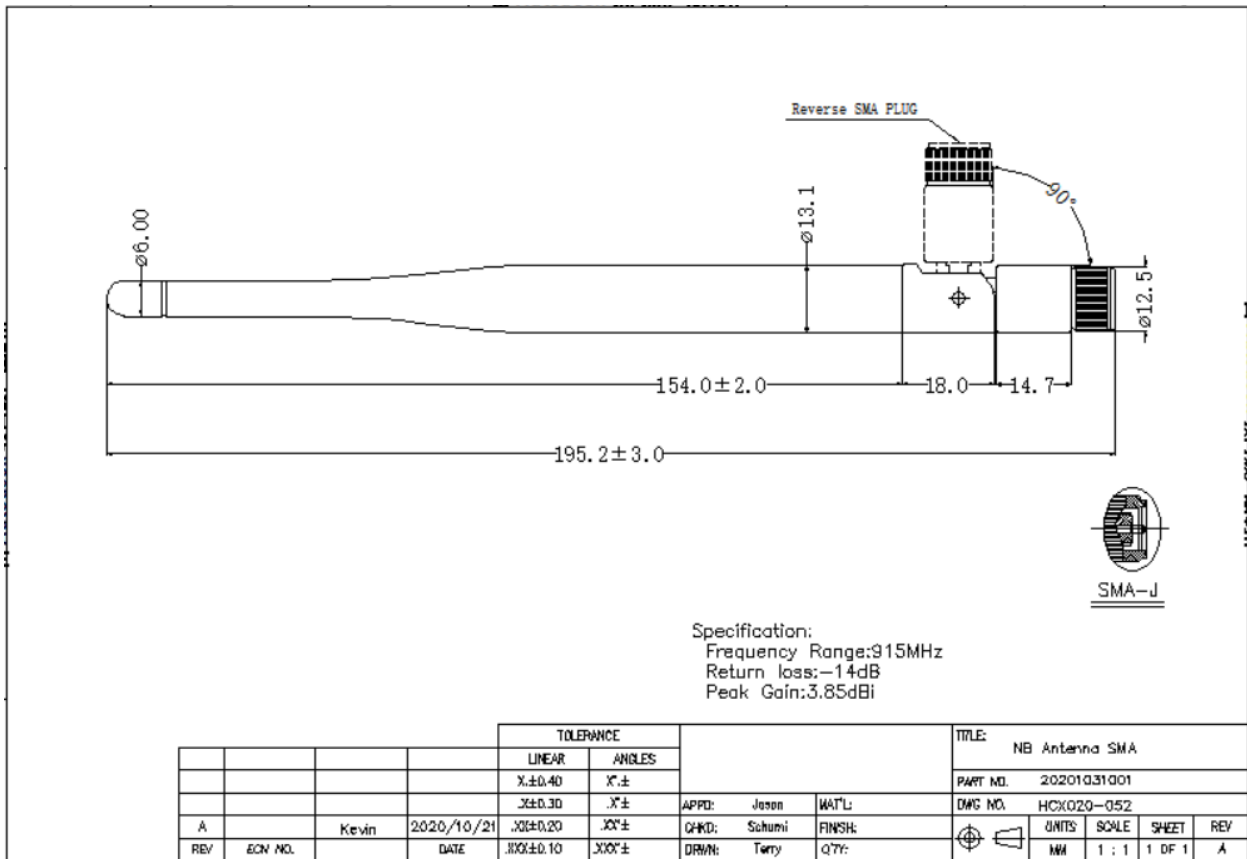
- 2.1 Antenna Material.....Cu
- 2.4 Operating Temp.....-20°C- +65°C
- 2.5 Storage Temp.....-30°C- +75°C
- 2.6 Color.....BLACK



# 深圳市海凌科电子有限公司

SHEN ZHEN Hi-LinK ELECTRICAL CO, LTD

## RF Antenna Assembly SPEC: 915Mhz



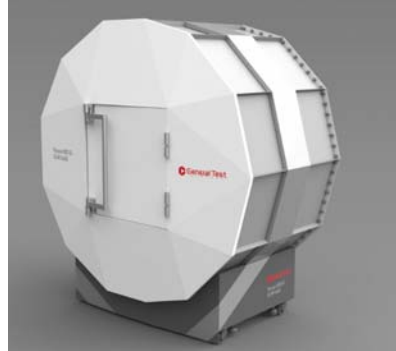
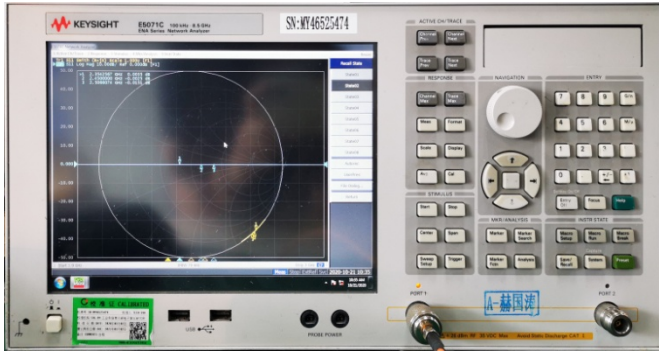


深圳市海凌科电子有限公司

SHEN ZHEN Hi-LinK ELECTRICAL CO, LTD

---

RF Antenna Test Equipment:



**Address: 403A, Building 2, Jingji Yujing Times Building, Huangge Keng  
Community, Longcheng Street, Longgang District, Shenzhen**

**Contact: Kevin.Xu**

**Tel:135-7081-0988**

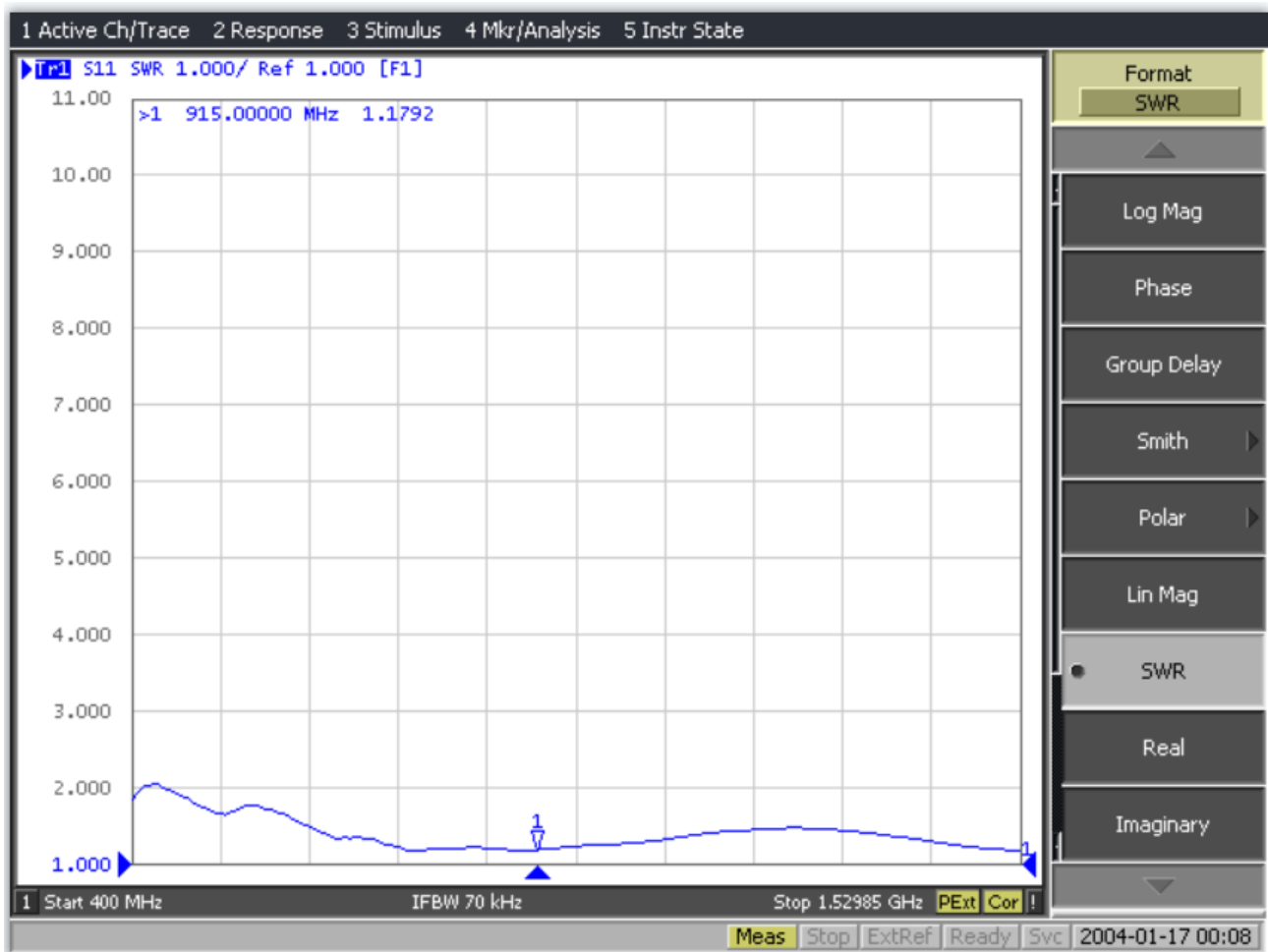


# 深圳市海凌科电子有限公司

SHEN ZHEN Hi-LinK ELECTRICAL CO, LTD

## 915Mhz Performance data:

### V.S.W.R:

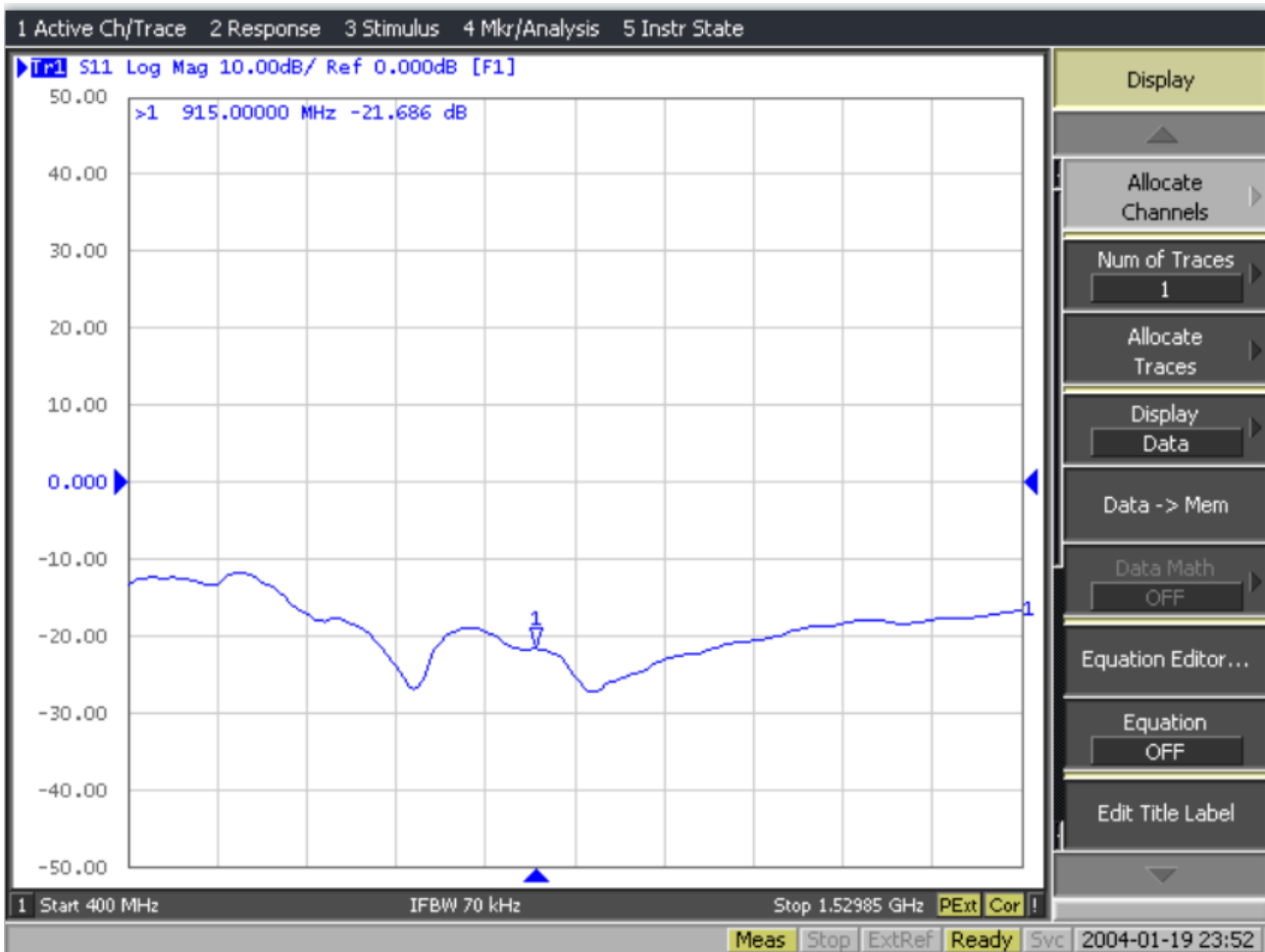




深圳市海凌科电子有限公司

SHEN ZHEN Hi-LinK ELECTRICAL CO, LTD

### Return loss:



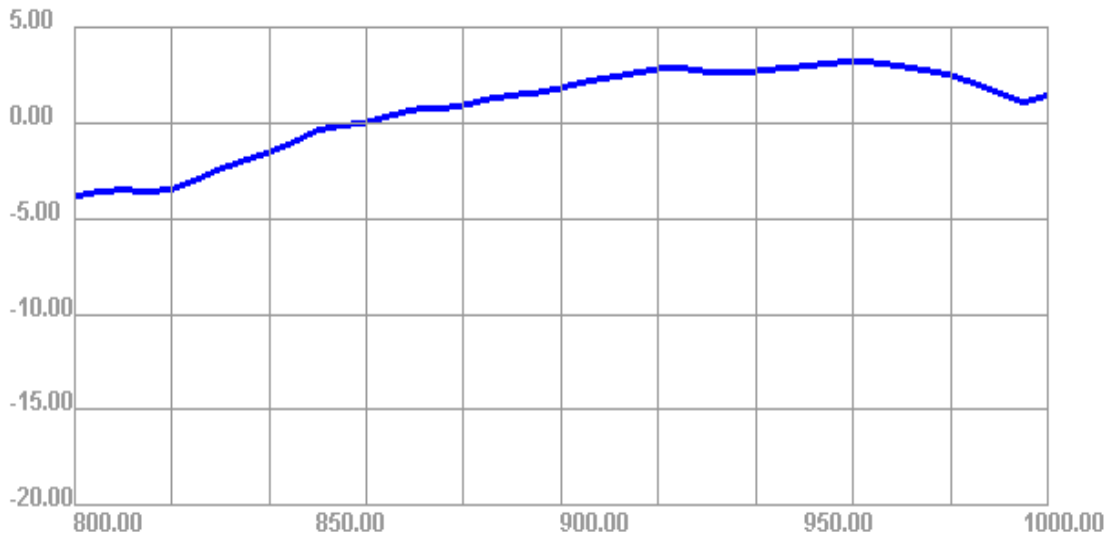


# 深圳市海凌科电子有限公司

SHEN ZHEN Hi-LinK ELECTRICAL CO, LTD

Frequency	Efficiency(%)	Peak GAIN(dBi)
915Mhz	65.11	3.85

### 800.00MHz - 1000.00MHz Gain



### 800.00MHz - 1000.00MHz Efficiency

