

**PHILIPS**

SpeechMike



# User manual

SpeechMike Premium Air (SMP4000)

# Table of Contents

1. Important .....	3
Safety instructions .....	3
Cleaning and disinfection .....	4
Disposal of your old product .....	4
About this user manual .....	4
2. Your SpeechMike .....	6
Product highlights .....	6
What's in the box .....	6
Overview .....	7
Overview of the docking station .....	8
3. Get started .....	9
Charging the battery .....	9
Learn about the battery status .....	10
Turn the device on and off .....	10
Pairing .....	11
Learn about wireless technology .....	11
Idle mode .....	12
Locate your docking station .....	12
Resetting the wireless connection .....	12
4. Use your SpeechMike .....	13
Create a recording .....	13
Customize the SpeechMike .....	13
Hands-free dictating with a Philips foot control .....	15
Upgrading the firmware .....	16
5. Button modes .....	18
Switch between button modes .....	18
Event mode .....	19
Keyboard mode .....	20
Browser mode .....	21
Windows speech recognition mode .....	22
Dragon for Mac mode .....	23
Dragon for Windows mode .....	24
6. Troubleshooting .....	25
LED colors and meanings .....	25
7. Technical data .....	27
8. Certifications .....	28
FCC Warning Statement .....	28
Industry Canada (IC) regulatory information .....	28
Open source software .....	28

# 1. Important

Do not make any adjustments and modifications that are not described in this manual. Follow all safety instructions to ensure proper operation of the device. The manufacturer assumes no liability for damages resulting from non-compliance with the safety instructions.



View this user manual  
online:

[help.speechmike.com/  
smp4000](http://help.speechmike.com/smp4000)

## Safety instructions

- Protect the device from rain and liquids to prevent damage to the device or a short circuit.
- Do not expose the device to excessive heat caused by placing it on a heating device or in direct sunlight.
- Protect the cables from damage by being trapped, particularly at the plugs and where cables exit the housing.
- Do not perform any maintenance operations that are not described in this user manual. Do not disassemble the device into its component parts to carry out repairs. The device may only be repaired in authorized service centers.
- All wireless devices may be susceptible to interference, which could affect performance.
- Back up your data and recordings. The manufacturer's warranty does not cover loss of data resulting from user actions.

## Rechargeable built-in battery

- This device contains a built-in Li-polymer battery which should not be replaced by the customer. The battery may only be replaced in authorized service centers or by an authorized Philips partner for dictation equipment.
- Batteries contain substances that may pollute the environment. Used batteries should be disposed of at an official collection point.

## Small children

Your device and its accessories may contain small parts. Keep them out of the reach of small children.

## Operating environment

This device meets RF exposure guidelines when used either in front of the mouth or when positioned at least 2.2 cm (0.87 inches) away from the body.

Parts of the device are magnetic. Metallic materials may be attracted to the device. Do not place credit cards or other magnetic storage media near the device or in the docking station because information stored on them may be erased.

## Medical device interference

Operation of any radio transmitting equipment may interfere with the functionality of inadequately protected medical devices. Consult a physician or the manufacturer of the medical device to determine if they are adequately shielded from external RF energy or if you have any questions. Switch off your device in health care facilities when any regulations posted in these areas instruct you to do so. Hospitals or health care facilities may be using equipment that could be sensitive to external RF energy.

## Implanted medical devices

This device contains components that emit electromagnetic waves. Electromagnetic waves might interfere with the operation of implanted medical devices, such as pacemakers or implanted cardioverter defibrillators. Manufacturers of medical devices recommend that a minimum separation of 15.3 cm (6 inches) should be maintained between a wireless device and an implanted medical device to avoid potential interference with the medical device. Persons who have such devices should:

- Always keep the wireless device more than 15.3 cm (6 inches) from the medical device when the wireless device is turned on.
- Not carry the wireless device in a breast pocket.
- Turn the wireless device off immediately if there is any reason to suspect that interference is taking place.
- Read and follow the directions from the manufacturer of their implanted medical device.

If you have any questions about using your wireless device with an implanted medical device, consult your health care provider.

## Hearing aids

Some digital wireless devices may interfere with some hearing aids. If interference occurs, consult your service provider.

## Vehicles

RF signals may affect improperly installed or inadequately shielded electronic systems in motor vehicles such as electronic fuel injection systems, electronic antiskid (antilock) braking systems, electronic speed control systems, and air bag systems. For more information, check with the manufacturer, or its representative, of your vehicle or any equipment that has been added.

Only qualified personnel should service the device or install the device in a vehicle. Faulty installation or service may be dangerous and may invalidate any warranty that may apply to the device.

Check regularly that all wireless device equipment in your vehicle is mounted and operating properly. Do not store or carry flammable liquids, gases, or explosive materials in the same compartment as the device, its parts, or enhancements. For vehicles equipped with an air bag, remember that air bags inflate with great force.

## Use in aircraft

Wireless transmitters can negatively affect the operation of other electronic equipment, causing them to malfunction. Turn off your device when you travel in aircraft.

## Cleaning and disinfection

- Before cleaning, disconnect all cables from the device.
- To clean the device, use a soft dry cloth.
- To disinfect the device, use products for disinfection of surfaces in clinical areas and patient care equipment, such as surface disinfectant wipes.
- Do not use harsh chemicals or strong detergents.
- Avoid getting moisture in openings.
- Do not rub or strike the surface with anything hard or sharp as this may scratch or damage the surface permanently.

## Disposal of your old product

### Europe



A crossed-out wheeled bin symbol attached to a product indicates that the product is covered by the European Directive 2011/65/EU. Please get informed about the local separate collection system for electrical and electronic products. Please act according to your local rules and don't dispose of your old products with your normal household waste. Correct disposal of your old product helps to prevent potential negative consequences for the environment and human health.

### United States

Rechargeable Li-ion battery:

- Your product is designed and manufactured with high quality materials and components, which can be recycled and reused. For recycling information, please contact your local waste management facilities or visit [www.recycle.philips.com](http://www.recycle.philips.com).
- This appliance contains a rechargeable lithium-ion battery which must be disposed of properly.
- Contact your local town or city officials for battery disposal information. You can also call 1-800-822-8837 or visit [www.call2recycle.org](http://www.call2recycle.org) for battery drop-off locations.
- For assistance, visit our website [www.philips.com/support](http://www.philips.com/support) or call 1-800-243-3050 toll free.

Rechargeable NiMH battery:

- Your product is designed and manufactured with high quality materials and components, which can be recycled and reused. For recycling information, please contact your local waste management facilities or visit [www.recycle.philips.com](http://www.recycle.philips.com).
- This appliance contains a rechargeable NiMH battery which must be disposed of properly.

- Contact your local town or city officials for battery disposal information. You can also call 1-800-822-8837 or visit [www.call2recycle.org](http://www.call2recycle.org) for battery drop-off locations.
- For assistance, visit our website [www.philips.com/support](http://www.philips.com/support) or call 1-800-243-3050 toll free.

### Canada

Rechargeable Li-ion battery:

- Your product is designed and manufactured with high quality materials and components, which can be recycled and reused. For recycling information, please contact your local waste management facilities or visit [www.recycle.philips.com](http://www.recycle.philips.com).
- This appliance contains a rechargeable lithium-ion battery which must be disposed of properly.
- Contact your local town or city officials for battery disposal information. You can also call 888-224-9764 or visit [www.call2recycle.ca](http://www.call2recycle.ca) for battery drop-off locations.
- For assistance, visit our website [www.philips.com/support](http://www.philips.com/support) or call 1-800-243-7884 toll free.

Rechargeable NiMH battery:

- Your product is designed and manufactured with high quality materials and components, which can be recycled and reused. For recycling information, please contact your local waste management facilities or visit [www.recycle.philips.com](http://www.recycle.philips.com).
- This appliance contains a rechargeable NiMH battery which must be disposed of properly.
- Contact your local town or city officials for battery disposal information. You can also call 888-224-9764 or visit [www.call2recycle.ca](http://www.call2recycle.ca) for battery drop-off locations.
- For assistance, visit our website [www.philips.com/support](http://www.philips.com/support) or call 1-800-243-7884 toll free.

## About this user manual

Find a quick overview of your device on the next pages. For detailed description, see the following chapters of this user manual. Read the instructions carefully.

## Symbols used



### TIP

This symbol identifies information that helps you to use your device more efficiently and simply.



### NOTE

This symbol indicates notices which you should observe when handling or operating the device.

**CAUTION**

This symbol warns of damage to the device and possible data loss. Damage can be caused by improper handling.

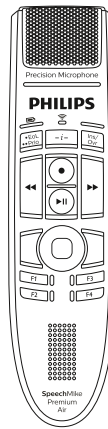
## 2. Your SpeechMike

We are delighted that you have chosen a Philips device. Visit our website for comprehensive support, such as user manuals, software downloads, warranty information and more: [www.philips.com/dictation](http://www.philips.com/dictation).

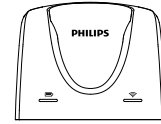
### Product highlights

- Wireless recording and playback
- Wireless charging
- Long-lasting battery
- Superior recording quality
- Noise-canceling microphone
- Ergonomic design

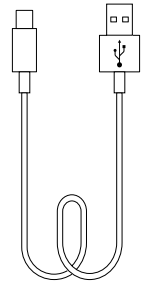
### What's in the box



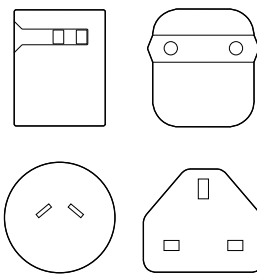
Dictation microphone



Docking station



Micro USB cable (x2)

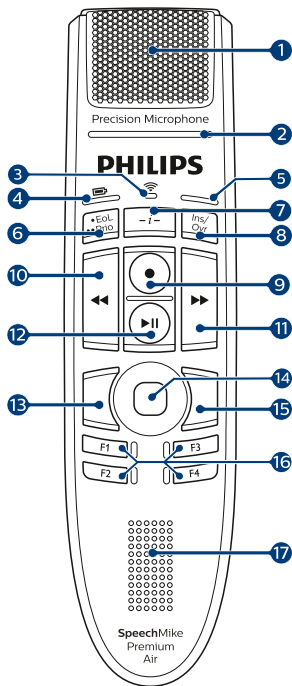


Power supply unit and outlet adapters

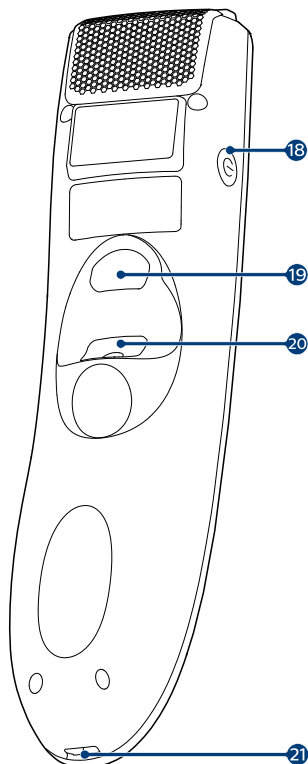


Quick start guide

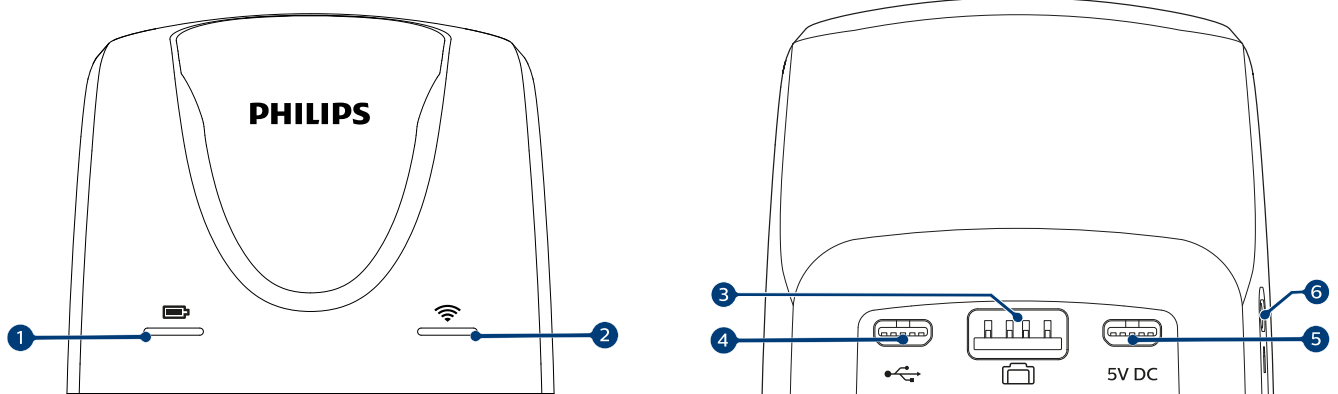
# Overview



1. Microphone
2. Record LED
3. Wireless connection LED
4. Battery/command LED
5. Insert/overwrite LED; Button mode LED
6. End-of-letter/priority button
7. Instruction button
8. Insert/overwrite button
9. Record button
10. Rewind button
11. Fast forward button
12. Play/pause button
13. Left mouse button
14. Touch navigation/left mouse button
15. Right mouse button
16. Programmable function buttons
17. Speaker
18. Power button
19. Command button
20. Left mouse button
21. Micro USB port for charging



## Overview of the docking station



1. Charging LED
2. Wireless connection LED
3. Foot control port
4. Micro USB port for PC connection
5. Micro USB port for charging
6. Kensington Security Slot



### 3. Get started

#### CAUTION

Before you connect the device, first read the [Safety instructions \[3\]](#).

### Charging the battery

- Charge the built-in battery before you use the device for the first time or if you haven't used it for an extended time period.
- If the battery is completely discharged and your device turns off, allow the battery to charge for a while before you turn on the device.
- A complete recharge cycle for normally discharged batteries takes about 3 hours.
- If you haven't used your device for an extended time period, the battery might be deeply discharged. In this case, a complete recharge cycle takes about 6 hours.
- The device should be charged every 6 months even when not used, to prevent the battery from completely draining (deep discharge).

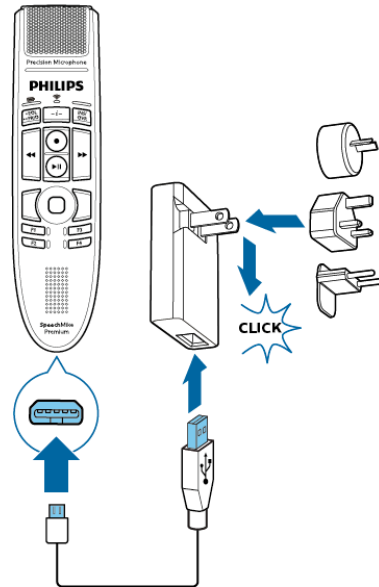
#### NOTE

The included USB power supply unit is a US standard power supply. Depending on your region, you might need to use the supplied outlet adapters to fit regional power outlets.

#### CAUTION

Use only the original power supply unit. Using a different power supply unit may damage the device.

### Charge via USB power supply unit



↳ During charging, the battery LED glows orange.

↳ When charging is complete, the battery LED glows green.

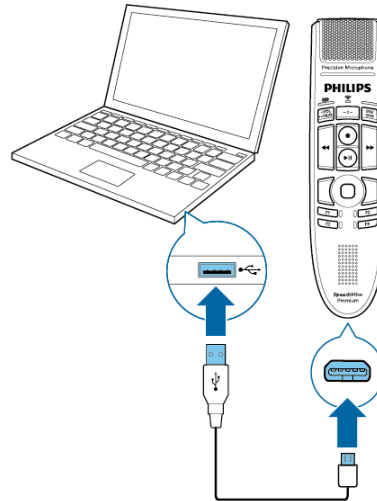
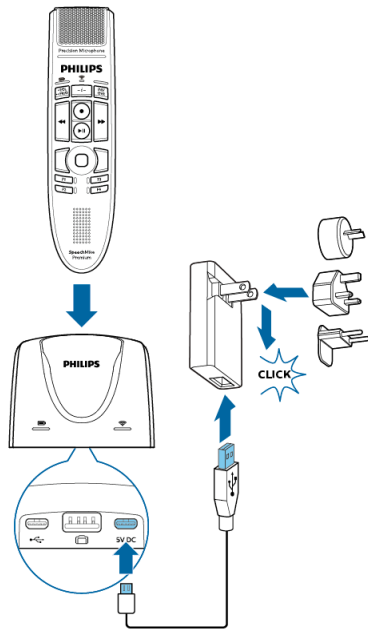
### Charge via docking station

#### NOTE

- If you charge your device via docking station, make sure that the micro USB connector is connected to the USB port for charging marked with 5V DC.
- The SpeechMike might get warm when charging it in the docking station. This is normal, especially when you are charging the device for a longer time.

#### CAUTION

Make sure that there are no metallic parts in the docking station, otherwise the charging process is not possible. In this case, the battery LED on the docking station starts flashing red.



↳ During charging, the battery LED on the SpeechMike and on the docking station glow orange.

If the battery is deeply discharged, the battery LED on the SpeechMike flashes orange. In this case, the device cannot be operated until the battery LED glows orange.

↳ When charging is complete, the battery LED on the SpeechMike and on the docking station glow green.



#### NOTE

If you experience connection problems, see [LED colors and meanings \[25\]](#) for more information.

### Charge via computer

Before you charge the battery via computer, make sure that your computer is turned on.



#### NOTE




- If you charge your device via computer instead of using the power supply unit, the charging speed might slow down due to a lower charging current.
- Recording is not possible if only your SpeechMike is connected to the computer. To make a recording, you also need to connect the docking station to the computer.

↳ During charging, the battery LED glows orange.

↳ When charging is complete, the battery LED glows green.

### Learn about the battery status

Immediately after turning the SpeechMike on or when the SpeechMike is removed from the docking station, the battery LED indicates the battery status. For more information, see [LED colors and meanings \[25\]](#).

Battery LED	Battery status
green 	more than 6 hours recording time left
orange  (only displayed when shortly pressing the Power button)	6 hours or less recording time left
red 	2 hours or less recording time left



#### TIP

You can always check the battery status of your SpeechMike by shortly pressing the a Power button.

### Turn the device on and off

To turn the device on:

- Shortly place the device into the docking station or press and hold the Power button for about 3 seconds.
  - ↳ The SpeechMike beeps.
  - ↳ If the connection with the docking station succeeds, the connection LED on the SpeechMike and on the docking station glow green.

To turn the device off:

- Press and hold the Power button for about 3 seconds.
  - ↳ The SpeechMike beeps and the connection LED on the docking station glows red.

**NOTE**

The SpeechMike can't be turned off while it is in the docking station. To turn it off, remove your SpeechMike from the docking station first.

## Pairing

Once you have connected your SpeechMike to a docking station, you can dictate wirelessly and use the dictation microphone on different workstations without any further pairing effort.

**NOTE**

- If you use several docking stations, make sure to keep a minimum distance of 50 cm (18 inches) between each docking station. If the distance is less than 50 cm (18 inches), there might be interferences between the docking stations. In this case, the docking station paired with the SpeechMike can't be found.
- Make sure that the distance between the SpeechMike and the docking station is not more than 5 meters (16 feet). For more information, see [Learn about wireless technology \[11\]](#).

## Pair the SpeechMike and the docking station

Insert the SpeechMike into the docking station for about 4 seconds.



↳ The pairing process starts.

↳ When pairing is finished, the wireless connection LED on the SpeechMike and on the docking station glow green.

**NOTE**

If you experience connection problems, see [LED colors and meanings \[25\]](#) for more information.

## Change paired devices

If your desired docking station is already connected to a different SpeechMike, the wireless connection LED on this docking station glows green (if the connected device is in range) or red (if the connected device is out of range).

To disconnect this existing connection and pair your own SpeechMike with the desired docking station, proceed as described in [Pair the SpeechMike and the docking station \[11\]](#).

**NOTE**

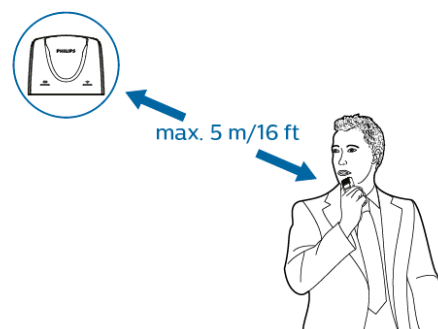
Please differentiate between the following two situations:

- If the wireless connection between the SpeechMike and the docking station is lost, the connection LED on both devices glows red
- If there is a problem with the USB connection of the docking station (e.g. the USB cable is connected to the wrong USB port on the docking station), the connection LED on both devices flashes red.

## Learn about wireless technology

The SpeechMike uses wireless technology to establish a connection between the dictation microphone and the docking station.

A wireless connection doesn't require that the SpeechMike and the docking station be in line of sight. However, the maximum distance between the SpeechMike and the docking station should not be more than 5 meters (16 feet). The closer the devices are to each other, the better is the performance. The connection is subject to interference from distance and obstructions or other electronic devices.





## NOTE

Make sure to keep a minimum distance of 50 cm (18 inches) between the docking station and other wireless devices, such as smartphones or laptops. If the distance is less than 50 cm (18 inches), there might be interferences between the docking station and other wireless devices.

## Going out of range

When the wireless connection is lost, the SpeechMike vibrates and beeps, and the wireless connection LED glows red. If you have a SpeechExec application running on your computer, the software will be stopped.

In this case, move closer to the docking station to reenter the reception area.

↳ The connection is reestablished.

↳ You will hear a beep sound on the SpeechMike and the wireless connection LED glows green.

## Idle mode

After 4 minutes of inactivity, the SpeechMike automatically enters idle mode and the wireless connection LED flashes green. To reactivate the device, simply lift it up or press any button.

If the SpeechMike is not used for more than 10 hours, it automatically turns off to save battery life. To turn the device on again, shortly place it into the docking station or press the Power button until the battery LED lights up.



## NOTE

In idle mode, the connection between the SpeechMike and the docking station is temporarily interrupted. When you reactivate the SpeechMike by lifting it up, the connection is immediately reestablished.




## TIP

You can change and customize these default settings with Philips SpeechControl driver and configuration software. Download the software at [www.dictation.philips.com/speechcontrol](http://www.dictation.philips.com/speechcontrol). For more information, see [Customize the SpeechMike \[13\]](#).

If no connected docking station is found, insert the SpeechMike into your desired docking station for about 4 seconds to pair them.

## Resetting the wireless connection

If you should encounter problems with your device, for example, the SpeechMike doesn't respond or doesn't connect to the docking station, you can reset the wireless connection.

1. Disconnect the docking station from your computer and from the power outlet.  
↳ All LEDs on the docking station are off now.
2. Press the Power button on the SpeechMike for about 20 seconds.
3. Connect the docking station to your computer via the supplied USB cable. Make sure you use the USB port for PC connection marked with  on the docking station.
4. Place the SpeechMike into the docking station and wait for about 10 seconds.  
↳ The SpeechMike should be detected and be automatically paired with the docking station.



## NOTE

If you experience connection problems, see [LED colors and meanings \[25\]](#).

## Locate your docking station

If there are several docking stations in the room and you don't know which docking station is connected to your device, briefly press the Power button on the SpeechMike.

↳ The wireless connection LED on the connected docking station flashes green for a few seconds.

## 4. Use your SpeechMike

### NOTE

Any operations, e.g. recording or configuring your SpeechMike with SpeechControl driver and configuration software, have to be executed with the docking station connected to your computer. Do not connect the SpeechMike directly to the computer via a USB cable for this purpose. Connecting the SpeechMike directly to the computer is only intended for charging the device.

## Create a recording

Recording and playback of dictations with the SpeechMike requires dictation software such as Philips SpeechExec to be installed on the computer.

For more information on recording with the SpeechMike and the Philips SpeechExec software, download the SpeechExec user manual at [www.philips.com/dictation](http://www.philips.com/dictation).

### NOTE


- For best results, speak clearly and keep the microphone about 10 to 15 cm (4 to 6 inches) away from your mouth.
- Make sure that the distance between the SpeechMike and the docking station is not more than 5 meters (16 feet). For more information, see [Learn about wireless technology \[11\]](#).
- Make sure the docking station is connected to your computer, otherwise recording is not possible.

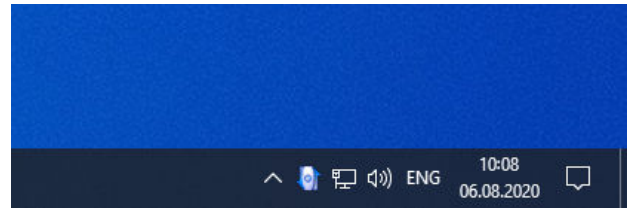
## Customize the SpeechMike

Use the Device Control Center software to customize the SpeechMike to suit individual user needs.

The software allows to assign different functions to each key, enable or disable certain features and also to start and control applications with the SpeechMike.

### Customize SpeechMike keys and settings

1. Make sure that the docking station is connected to the computer via the supplied USB cable and that the wireless connection to the SpeechMike is established.
2. Download and install the latest version of SpeechControl (Philips Device Control Center) from <https://www.dictation.philips.com/speechcontrol>.
3. Start Philips Device Control Center:
  - If the option to start the Philips Device Control Center automatically was selected during installation, open the program by clicking the  icon in the notification area of the Windows task bar.



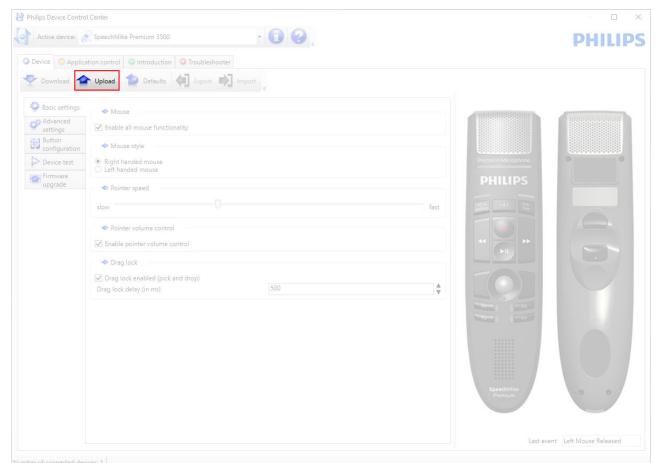
- To manually start the program, open the Windows start menu in Windows and select Philips Speech Control > Philips Device Control Center.

The current settings are automatically downloaded from the connected SpeechMike.

4. On the **Device** tab, configure device settings and select the function to be assigned to each key.



5. Click the **Upload** button to save the new settings.



### NOTE

- Settings can't be changed when the battery LED glows red. Charge the SpeechMike before changing the settings.
- The SpeechMike can be reset to its factory default configuration by clicking the **Defaults** button. Click the **Upload** button to save the default settings.



### TIP

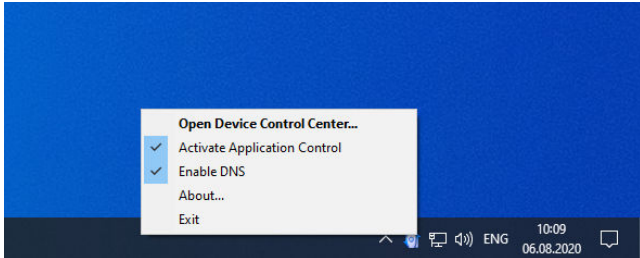
To test settings and key functions, use the **Device test** section on the **Device** tab.

## Use application shortcuts

The Device Control Center software allows to start and control other applications with the keys on the SpeechMike.

The Device Control Center software includes pre-installed profiles that make the SpeechMike ready for immediate operation with Dragon NaturallySpeaking speech recognition software and Microsoft Powerpoint. Additional profiles for other applications can be programmed.

1. Download and install the latest version of SpeechControl (Philips Device Control Center) from <https://www.dictation.philips.com/speechcontrol>.
2. If the option to start the Device Control Center automatically was selected during installation, the application icon appears in the notification area of the Windows task bar.  
To manually start the program, open the Windows start menu in Windows and select Philips Speech Control > Philips Device Control Center.
3. Right-click on the application icon in the notification area of the Windows task bar and verify that **Activate application control** is enabled. If the option is disabled, the configured settings and buttons will not function for any of the target applications.



### NOTE

Exit Philips SpeechExec software when using application shortcuts to prevent unintentional recording when controlling other applications.

## Default profile

The default profile is applied automatically when there is no profile assigned to an application in focus. This profile is set up to control Dragon NaturallySpeaking with your SpeechMike. The following settings are defined:

SpeechMike key	Assigned shortcut
● Record	Record (push to dictate)
▶   Play/Stop	Play from cursor position
◀◀ Rewind	Move cursor backwards
▶▶ Fast forward	Move cursor forwards
· EOL/·· PRIO	Mark backwards

SpeechMike key	Assigned shortcut
INS/OVR	Open correction window

## Powerpoint profile

Use this profile to control Powerpoint presentations with the SpeechMike. The following settings are defined:

SpeechMike key	Assigned shortcut
● Record	Black screen
▶   Play/Stop	White Screen
◀◀ Rewind	Go to previous slide
▶▶ Fast forward	Go to next slide
· EOL/·· PRIO	End slide show
INS/OVR	Show/hide cursor



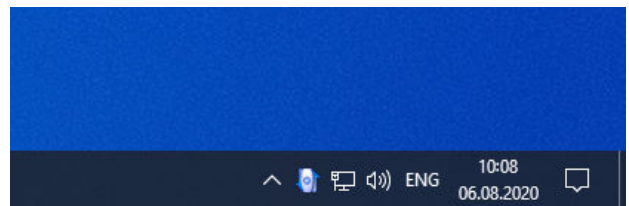
### NOTE

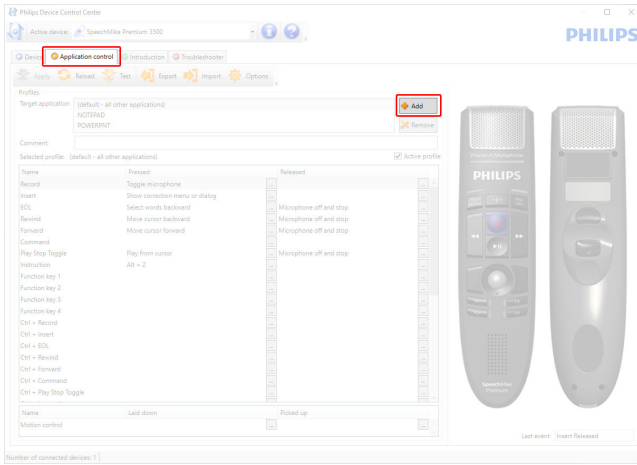
Philips cannot guarantee the proper function of all assigned shortcuts, since shortcuts can differ among versions and languages.

## Program a custom profile

It is possible to program shortcuts for other applications to control application functions with the keys of the SpeechMike.

1. Make sure that the docking station is connected to the computer via the supplied USB cable and that the wireless connection to the SpeechMike is established.
2. Download and install the latest version of SpeechControl (Philips Device Control Center) from <https://www.dictation.philips.com/speechcontrol>.
3. Start Philips Device Control Center:
  - If the option to start the Philips Device Control Center automatically was selected during installation, open the program by clicking the icon in the notification area of the Windows task bar.
4. On the tab **Application control**, click the **Add** button to create a new profile.






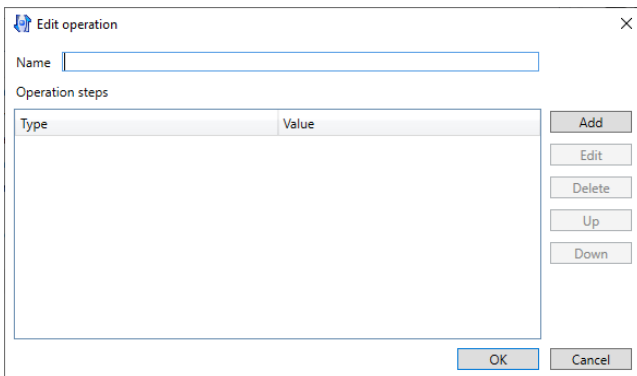
5. Browse and select the application executable and click on **Open**. A profile for the selected application will be added to the list of profiles.



### NOTE

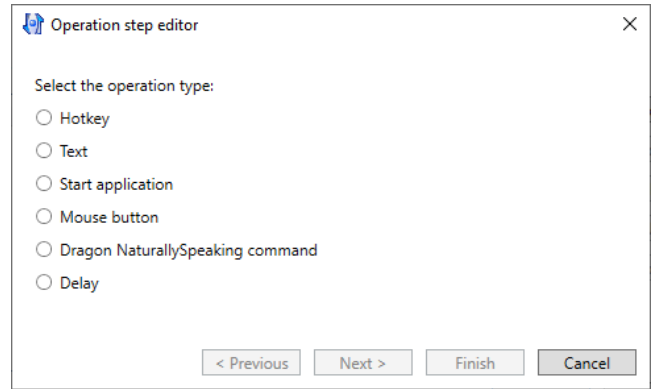
Exit the target application during configuration. Open the application when the device configuration settings are saved.

6. Select a button from the button column and click the  icon to assign a shortcut. You can assign different shortcuts for pressing and releasing a key. The shortcut editor window is displayed.



7. Enter name for the shortcut and click the **Add** button to add an operation for the shortcut. The following options are available:

- **Hotkey:** Assign a keyboard shortcut
- **Text:** Enter the text to be inserted when a key on the SpeechMike is pressed
- **Start application:** Start an application by pressing a key on the SpeechMike
- **Mouse button**
- **Dragon NaturallySpeaking command**
- **Delay**



8. You can add one operation or a sequence of operations for every shortcut.
9. Click the **Finish** button to save the new settings.



### NOTE

The Device Control Center cannot be used to program application shortcuts for Philips SpeechExec software. Shortcuts for Philips SpeechExec can be configured in the General settings menu of SpeechExec. See the SpeechExec application help for more information.



### TIP

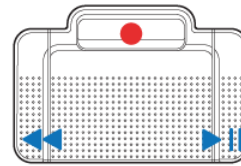
Application control configuration settings can be saved into files and imported later to apply the same configuration settings to several devices.

## Hands-free dictating with a Philips foot control

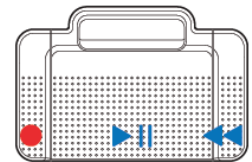
If you connect a Philips foot control, you can control the dictation functions with your foot control to have your hands free for your work.

## NOTE

- Before you connect the foot control to the docking station, make sure that the docking station is neither connected to the computer nor to the power outlet, as otherwise the foot control might not be detected.
- Recording and playback of dictations with a Philips foot control requires dictation software such as Philips SpeechExec to be installed on the computer. When third-party dictation software other than Philips SpeechExec is used, driver software must be installed before connecting the SpeechMike and the foot control.
- For best recording results during hands-free dictation, you will probably have to adjust the recording volume. You can set the recording volume in the audio settings of your recording application, e.g. Philips SpeechExec dictation software or Dragon NaturallySpeaking speech recognition software.



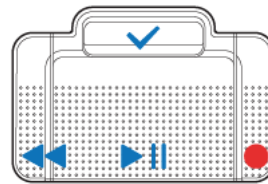
ACC2310



ACC2320

### Foot control ACC2330

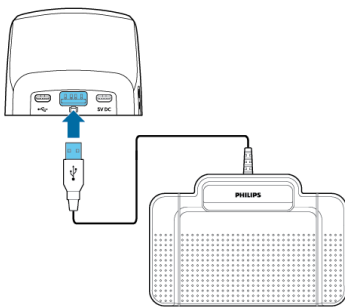
The Philips foot control 2330 has four pedals. By default, the foot control 2330 has the following configuration:



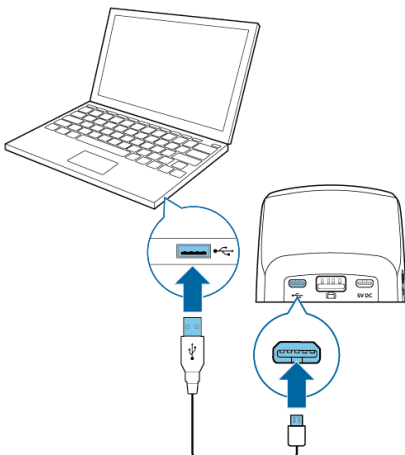
ACC2330

To connect a foot control for hands-free dictation:

1. Connect a Philips ACC2300 series foot control to the docking station of your SpeechMike.



2. Connect the docking station to your computer.



## Button assignment of Philips foot controls

Foot control ACC2310 / ACC2320

The Philips foot controls 2310 and 2320 have three pedals. By default, the foot controls 2310 and 2320 have the following configuration:

## Upgrading the firmware

Your device is controlled by an internal program called firmware. As a part of ongoing product maintenance, the firmware is upgraded and errors are corrected.

It is possible that a newer version (an 'update') of the firmware has been released since you purchased the device. In this case, you can easily update your device to the latest version.

Use SpeechControl (Philips Device Control Center) to upgrade the firmware of your device. You can download the latest version of the application here: <https://www.dictation.philips.com/speechcontrol>. Please follow the steps outlined below to upgrade your device.

## NOTE

A firmware upgrade is only possible if the following preconditions are met:

- The SpeechMike has at least 50% (approx. 12 hours) battery power left.
- The SpeechMike is not in idle mode.
- There is no recording or playback running.

To upgrade your device:

1. Connect the docking station to a power outlet and to the computer by using the supplied USB cables and the power supply unit. Then place the SpeechMike into the docking station.






## NOTE

Make sure to upgrade your device together with all the accessories you are commonly using, including the docking station (or for some devices the optional remote control). If you are using your device together with the optional Philips AirBridge, make sure to also upgrade any other hardware you are commonly using with your device (e.g. the docking station).

### 2. Start Philips Device Control Center:

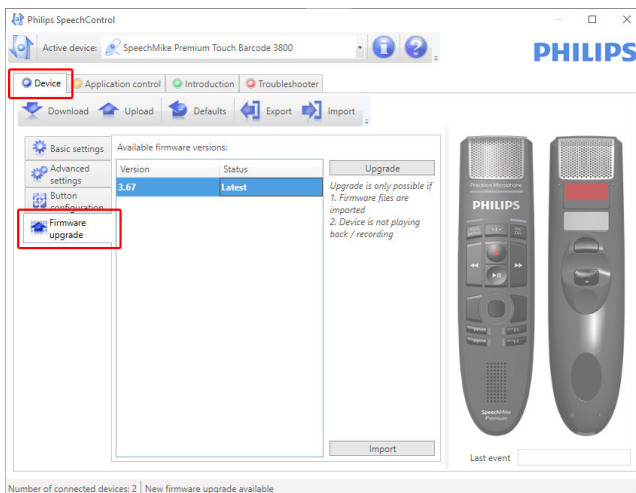
- If the option to start the Philips Device Control Center automatically was selected during installation, open the program by clicking the  icon in the notification area of the Windows task bar.
- To manually start the program, open the Windows start menu in Windows and select Philips Speech Control > Philips Device Control Center.



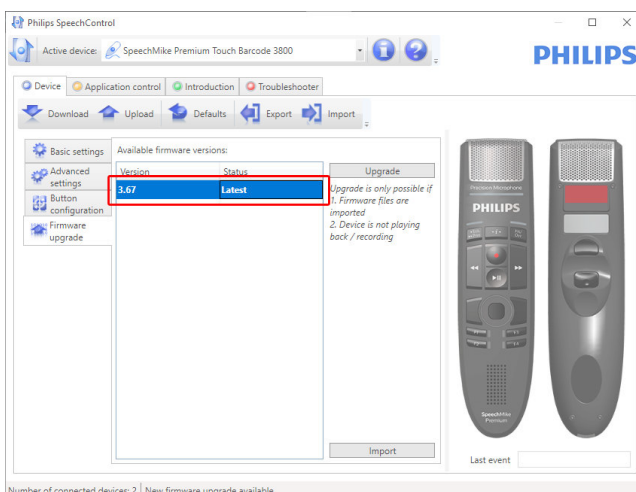
## NOTE

Make sure that you're using the **latest version** of Philips Device Control Center.

### 3. On the **Device** tab, click on **Firmware upgrade**.



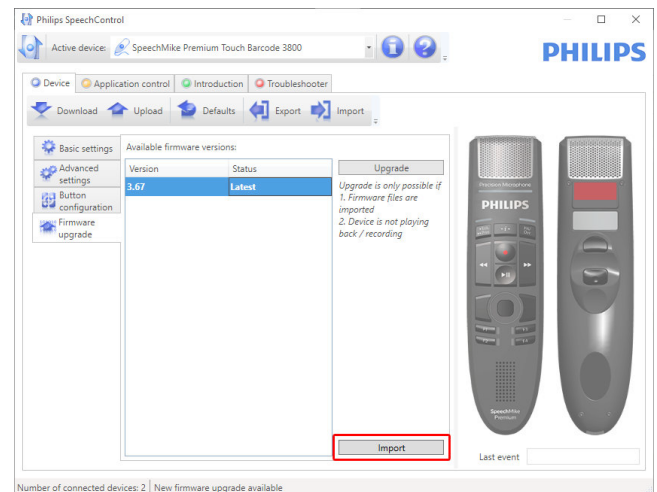
### 4. Click on the desired upgrade version from the **Available firmware versions** list.



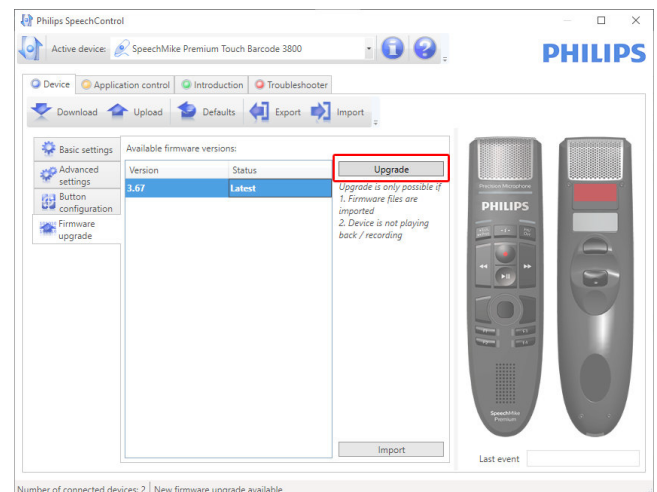
If the **Available firmware versions** list is empty, you can also manually check our website for firmware upgrades.

Download the firmware update for your SpeechMike model from [www.philips.com/dictation](http://www.philips.com/dictation).

Click the **Import** button and select the folder with the firmware files to be imported.



### 5. Click the **Upgrade** button.



### 6. Choose **Yes, upgrade the device** to install the new firmware.

- The firmware upgrade takes about 30 seconds.
- When the firmware upgrade is finished, the SpeechMike and the docking station are shortly disconnected and the wireless connection LED on both devices starts flashing red
- The pairing process starts automatically. When the connection is re-established, the wireless connection LED on the SpeechMike and the docking station glow green.



## CAUTION

Do not disconnect the dictation microphone from the computer during firmware upgrade. This might damage your product.

## 5. Button modes

With your SpeechMike, you can control various applications on your computer or in your browser. You have different button modes available for this purpose:

- [Event mode \[19\]](#)
- [Keyboard mode \[20\]](#)
- [Browser mode \[21\]](#)

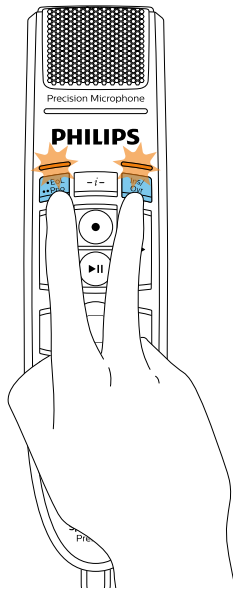
- [Windows speech recognition mode \[22\]](#)
- [Dragon for Mac mode \[23\]](#)
- [Dragon for Windows mode \[24\]](#)

You can change the button assignment for each mode in SpeechControl software. Download the software for free at [www.dictation.philips.com/speechcontrol](http://www.dictation.philips.com/speechcontrol).

### Switch between button modes

You can easily switch between the available button modes:

1. Press the End-of-letter/priority (•EoL/••Prio) button and the Insert/overwrite (INS/OVR) button simultaneously for three seconds.



2. All button LEDs simultaneously flash orange.
3. Press the corresponding button for the desired mode. The buttons are assigned to the button modes as follows:

Mode	Button
Event mode	F1
Keyboard mode	F2
Browser mode	F3
Windows speech recognition mode	F4
Dragon for Mac mode	•EoL/••Prio
Dragon for Windows mode	INS/OVR

4. The SpeechMike exits the mode selection and switches to the selected mode.



#### TIP

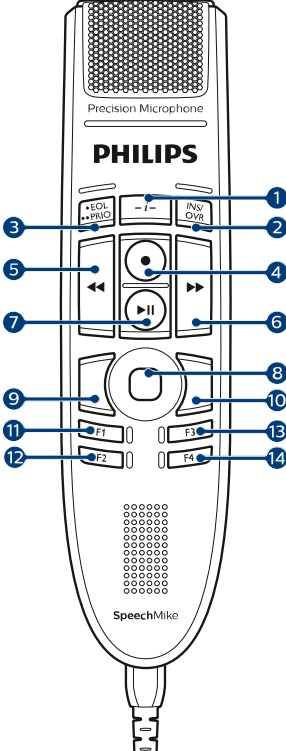
You can always check your current button mode by briefly pressing the End-of-letter/priority (•EoL/••Prio) button and the Insert/overwrite (INS/OVR) button simultaneously.

The LED of the button assigned to the current mode (see previous table) shortly lights up orange, e.g. if the currently activated mode is the Event mode, the LED of the F1 button lights up orange.

## Event mode

The Event mode is the default mode of your SpeechMike. In this mode, each button on your SpeechMike is assigned to a command. In SpeechControl software, you can define which commands should be executed by pressing or releasing a desired button on your SpeechMike in order to control various computer applications.

Command	
1	Instruction
2	Insert/overwrite/append
3	End-of-letter/priority
4	Record
5	Fast rewind
6	Fast forward
7	Play
8	Touch navigation/left mouse
9	Left mouse
10	Right mouse
11	Programmable function button
12	Programmable function button
13	Programmable function button
14	Programmable function button

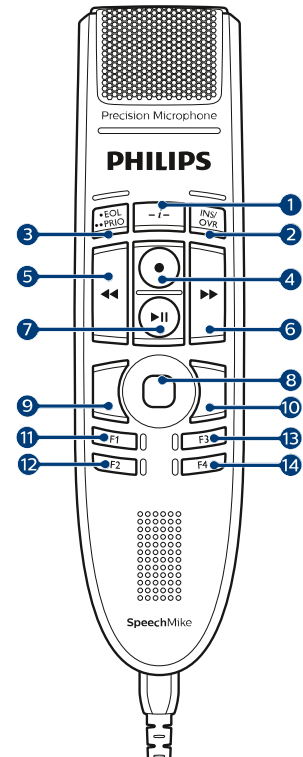


## Keyboard mode

Assign a button on your SpeechMike to a shortcut you are using on your computer in order to control various computer applications. In SpeechControl software, you can define which commands should be executed by pressing a desired button on your SpeechMike.

In this mode, you can also operate Dragon NaturallySpeaking speech recognition software on a Windows computer by using the pre-configured Dragon shortcuts.

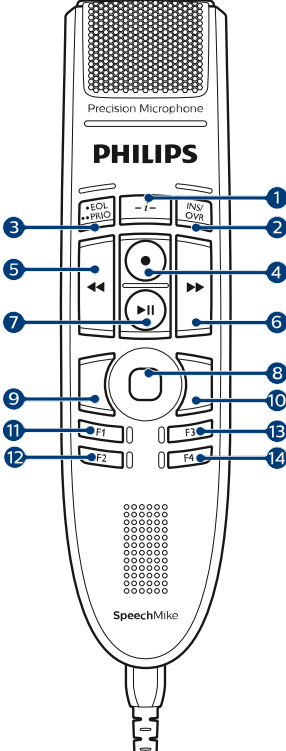
	Command	Shortcut in Speech-Control
1	Record/Stop (Dragon microphone on/off)	<b>NumKey+</b>
2	Tab forward	<b>Tab</b>
3	Tab backward	<b>Shift+Tab</b>
4	SpeechMike microphone on/ off	Microphone ON/OFF
5	Mark previous word(s)	<b>Ctrl+Shift+Left</b>
6	Next field (Dragon)	<b>Ctrl+Shift+N</b>
7	Play	
8	Touch navigation/left mouse	
9	Left mouse	
10	Right mouse	
11	Show dictation box (Dragon)	<b>Ctrl+Shift+D</b>
12	Transfer text (Dragon dictation box)	<b>Ctrl+Shift+T</b>
13	Programmable function button	
14	Switch to hidden mode (Dragon Medical Practice Edition)	<b>Ctrl+Shift+H</b>



## Browser mode

Assign a SpeechMike button to a shortcut or a command in your browser in order to control various browser based dictation applications. In SpeechControl software, you can define which commands should be executed by pressing a desired button on your SpeechMike.

Command	
1	-
2	Insert/overwrite/append
3	-
4	Record
5	Fast rewind
6	Fast forward
7	Play
8	Touch navigation/left mouse
9	Left mouse
10	Right mouse
11	Jump to start of dictation
12	Jump to end of dictation
13	Programmable function button
14	Programmable function button



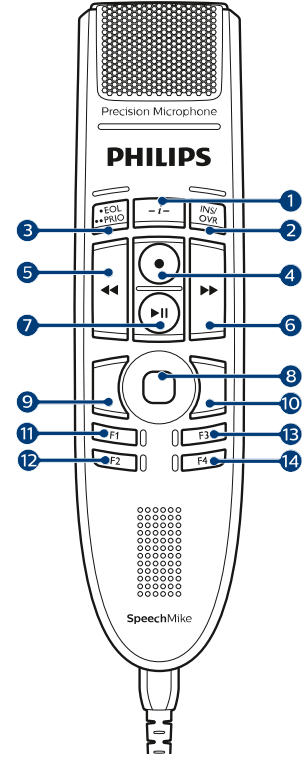

### NOTE

The button assignment in Browser mode depends on the application you are using in your browser. Therefore, there is no default configuration for this mode. The table below only describes the default button assignment for the Philips SpeechLive cloud dictation solution.

## Windows speech recognition mode

In this mode, you can operate the pre-installed Windows speech recognition software on a Windows computer by using the pre-configured Windows shortcuts.

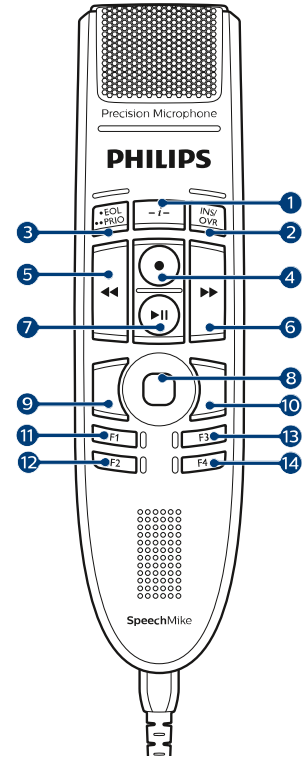
	Command	Shortcut in Speech-Control
1	-	
2	Next field (Dragon)	<b>Tab</b>
3	Tab backward	<b>Shift+Tab</b>
4	Windows microphone on/off	<b>Ctrl+Win</b>
5	Mark previous word(s)	<b>Ctrl+Shift+Left</b>
6	Mark next word(s)	<b>Ctrl+Shift+Right</b>
7	-	
8	Touch navigation/left mouse	
9	Left mouse	
10	Right mouse	
11	Copy	<b>Ctrl+C</b>
12	Cut	<b>Ctrl+X</b>
13	Paste	<b>Ctrl+V</b>
14	Programmable function button	



## Dragon for Mac mode

In this mode, you can operate Dragon NaturallySpeaking speech recognition software on a Mac computer by using the pre-configured Dragon shortcuts.

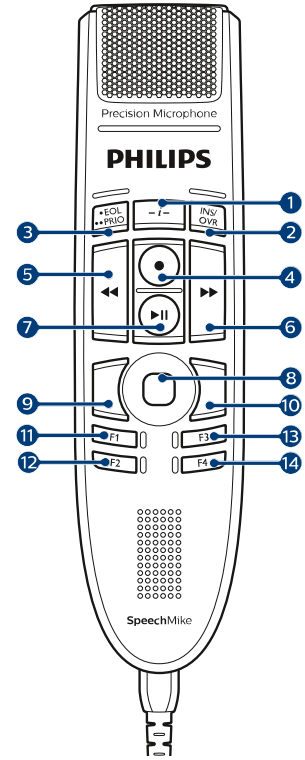
	Command	Shortcut in Speech-Control
1	-	
2	Tab forward	<b>Tab</b>
3	Tab backward	<b>Shift+Tab</b>
4	Dragon microphone on/off	<b>⌘+F11</b>
5	Mark previous word(s)	<b>Alt+Shift+Left</b>
6	Mark next word(s)	<b>Alt+Shift+Right</b>
7	Play	
8	Touch navigation/left mouse	
9	Left mouse	
10	Right mouse	
11	Copy	<b>⌘+C</b>
12	Cut	<b>⌘+X</b>
13	Paste	<b>⌘+V</b>
14	Programmable function button	



## Dragon for Windows mode

In this mode, you can operate Dragon NaturallySpeaking speech recognition software on a Windows computer by using the pre-configured Dragon shortcuts.

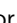
	Command	Shortcut in Speech-Control
1	-	
2	Tab forward	<b>Tab</b>
3	Tab backward	<b>Shift+Tab</b>
4	Dragon microphone on/off	<b>NumKey+</b>
5	Mark previous word(s)	<b>Ctrl+Shift+Left</b>
6	Next field (Dragon)	<b>Ctrl+Shift+N</b>
7	Play	
8	Touch navigation/left mouse	
9	Left mouse	
10	Right mouse	
11	Show dictation box (Dragon)	<b>Ctrl+Shift+D</b>
12	Transfer text (Dragon dictation box)	<b>Ctrl+Shift+T</b>
13	Programmable function button	
14	Switch to hidden mode (Dragon Medical Practice Edition)	<b>Ctrl+Shift+H</b>





## 6. Troubleshooting

Find the most common problems you could encounter with the SpeechMike in the following table. If you are unable to solve the problem with the information below, contact the supporting Philips partner you purchased the device from.















Problem	Cause	Solution
The SpeechMike is completely without function	<ul style="list-style-type: none"> <li>Some computer providers limit the output power of USB ports to 100mA. These ports may not provide enough power for the SpeechMike to function properly.</li> </ul>	<ul style="list-style-type: none"> <li>Use the supplied power supply unit.</li> <li>Connect the SpeechMike via a self-powered hub.</li> </ul>
The SpeechMike doesn't respond to input commands.	<ul style="list-style-type: none"> <li>The wireless connection to the docking station may be interrupted.</li> </ul>	<ul style="list-style-type: none"> <li>Check the wireless connection.</li> <li>Move closer to the docking station.</li> <li>Start the pairing process as described in the chapter <a href="#">Pairing [11]</a>.</li> </ul>
	<ul style="list-style-type: none"> <li>The USB cable is connected to the wrong USB port on the docking station (i.e. USB port for charging marked with 5V DC).</li> </ul>	<ul style="list-style-type: none"> <li>Disconnect the USB cable from the docking station and connect it to the USB port for PC connection marked with  on the docking station.</li> </ul>
	<ul style="list-style-type: none"> <li>Your computer is in sleep mode.</li> </ul>	<ul style="list-style-type: none"> <li>Wake your computer from sleep mode.</li> </ul>
	<ul style="list-style-type: none"> <li>The battery is empty.</li> </ul>	<ul style="list-style-type: none"> <li>Charge the SpeechMike.</li> <li>If none of the solutions provided above solves the problem, reset the wireless connection. For more information, see <a href="#">Resetting the wireless connection [12]</a>.</li> </ul>
The SpeechMike doesn't switch on.	<ul style="list-style-type: none"> <li>The battery is very low.</li> </ul>	<ul style="list-style-type: none"> <li>Charge the SpeechMike.</li> </ul>
The SpeechMike doesn't connect to the docking station.	<ul style="list-style-type: none"> <li>Pairings may have been reset or the SpeechMike has been previously paired with another docking station.</li> </ul>	<ul style="list-style-type: none"> <li>Start the pairing process as described in the chapter <a href="#">Pairing [11]</a>.</li> <li>If re-pairing doesn't solve the problem, reset the wireless connection. For more information, see <a href="#">Resetting the wireless connection [12]</a>.</li> </ul>
The SpeechMike is connected to the computer but sound will play on the computer's speaker only	<ul style="list-style-type: none"> <li>SpeechMike is not selected as the default playback device.</li> </ul>	<ul style="list-style-type: none"> <li>In the Windows sound settings, select SpeechMike as the default playback device.</li> </ul>
The SpeechMike doesn't record sound.	<ul style="list-style-type: none"> <li>The input level is too low because of the wrong recording source.</li> </ul>	<ul style="list-style-type: none"> <li>In the Windows sound settings, select SpeechMike as the default recording device.</li> </ul>
My computer can't detect the foot control.	<ul style="list-style-type: none"> <li>The docking station was connected to the computer and/or to the power outlet before you connected the foot control.</li> </ul>	<ul style="list-style-type: none"> <li>Disconnect the foot control from the docking station and the docking station from the computer and/or power outlet. Then reconnect the foot control to the docking station first and afterwards connect the docking station to the computer and/or to the power outlet.</li> </ul>
The connection between the SpeechMike and the docking station is being interrupted.	<ul style="list-style-type: none"> <li>The docking station is connected to a low-power USB port on your computer.</li> </ul>	<ul style="list-style-type: none"> <li>Additionally, connect the docking station via the supplied USB cable to the power supply unit and the USB port for charging (marked with 5V DC). For more information, see <a href="#">Charging the battery [9]</a></li> </ul>

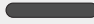




### LED colors and meanings

The LEDs on your SpeechMike and the docking station indicate the connection and battery status as well as problems that might occur when using your SpeechMike and the docking station. Use the following table to learn more about







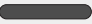
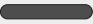
the connection status, battery status, and potential problems:


Connection LED 

SpeechMike	Docking station	Meaning
 green	 green	• connection OK
 orange + vibration	 green	• connection bad
 red + vibration	 red	• connection interrupted
 orange	 orange	• wireless connection OK but no USB connection
 short red flashing	 short red flashing after USB connection	• restoring USB connection; will connect shortly
 off	 red	• SpeechMike power off
 red	 red	• no pairing


SpeechMike	Meaning
 off	• battery full
 green—for 5 seconds (after shortly pressing the Power button)	• battery full
 orange—for 5 seconds (after shortly pressing the Power button)	• battery low, 6 hours or less recording time left
 red	• battery low, 2 hours or less recording time left
 red flashing	• battery empty

Battery LED  (SpeechMike in docking station)

SpeechMike	Docking station	Meaning
 green	 green	• battery fully charged
 orange	 orange	• battery charging
 orange flashing	 orange	• battery empty and charging but device not ready to be used yet
 off	 off	• no power supply

Battery LED  (SpeechMike out of docking station and switched on)

Docking station	Meaning
 green	• power connected

SpeechMike	Meaning
 green—for 5 seconds after turned on	• battery full

## 7. Technical data

### Wireless connectivity

- Wireless technology: 2.4 GHz ISM Band
- Modulation: 8 FSK
- Maximum range: up to 5 m (16 ft)

### Audio

- Microphone type: electret condenser microphone
- Characteristic: uni-directional
- Frequency response: 200 – 12 000 Hz
- Sensitivity: -37 dBV @ 1 kHz
- Signal-to-noise ratio: > 70 dBA

### Sound

- Speaker type: built-in round, dynamic speaker. Speaker diameter: 30 mm
- Acoustic frequency response: 300 – 7500 Hz
- Speaker output power: > 200 mW

### Power

- Battery type: built-in rechargeable Li-ion polymer battery
- Battery capacity: 800 mAh
- Battery lifetime: up to 24 hours of recording
- Standby time: > 100 hours
- Charging time: 3 hours

### Docking station

- USB:
  - micro USB for charging
  - micro USB for data transfer
  - USB type A for foot control
- Kensington Security Slot

### Design and finishing

- Material: high-class polymers with hygienic surface
- Color(s): dark grey pearl metallic

### Dimensions

- Product dimensions (W × D × H): 45 × 175 × 32 mm / 1.8 × 6.9 × 1.3 inch  
Weight: 120 g (4.2 oz)
- Docking station:  
Dimensions (W × D × H): 82 × 85 × 60 mm (3.2 × 3.3 × 2.4")  
Weight: 276 g (9.7 oz)

### Green specifications

- Compliant to 2011/65/EU (RoHS)

- Lead-free soldered product

### Operation conditions

- Temperature: 5° – 45° C / 41° – 113° F
- Humidity: 10% – 90%

### System requirements

- Processor: Intel Pentium 4, 1.0 GHz or equivalent processor
- RAM memory: 1 GB (2 GB recommended)
- Hard disk space: 10 MB for Speech Control, 100 MB for SpeechExec (optional), 250 MB for Microsoft .NET Framework
- Operating system: Windows 10, MacOS
- Free USB port

### Accessories (optional)

- Philips SpeechMike Premium Air docking station ACC4000
- AirBridge Wireless Adapter for SpeechOne and SpeechMike Premium Air ACC4100

## 8. Certifications

### FCC Warning Statement



Changes or modifications not expressly approved by the party responsible for compliance could void the user's authority to operate the equipment.

### FCC Compliance Statement

This device complies with part 15 of the FCC Rules. Operation is subject to the following two conditions:

- (1) This device may not cause harmful interference, and
- (2) this device must accept any interference received, including interference that may cause undesired operation.

This equipment has been tested and found to comply with the limits for a Class B digital device, pursuant to Part 15 of the FCC Rules. These limits are designed to provide reasonable protection against harmful interference in a residential installation. This equipment generates uses and can radiate radio frequency energy and, if not installed and used in accordance with the instructions, may cause harmful interference to radio communications. However, there is no guarantee that interference will not occur in a particular installation.

If this equipment does cause harmful interference to radio or television reception, which can be determined by turning the equipment off and on, the user is encouraged to try to correct the interference by one or more of the following measures:

- Reorient or relocate the receiving antenna.
- Increase the separation between the equipment and receiver.
- Connect the equipment into an outlet on a circuit different from that to which the receiver is connected
- Consult the dealer or an experienced radio/TV technician for help.

### Industry Canada (IC) regulatory information

This device contains licence-exempt transmitter(s)/receiver(s) that comply with Innovation, Science and Economic Development Canada's licence-exempt RSS(s). Operation is subject to the following two conditions:

- (1) This device may not cause interference.
- (2) This device must accept any interference, including interference that may cause undesired operation of the device.

### Open source software

Products mentioned in this manual may contain open source software.

Speech Processing Solutions GmbH hereby offers to deliver, upon request, a copy of the complete corresponding source code for the copyrighted open source software packages used in this product for which such offer is requested by the respective licenses. This offer is valid up to three years after product purchase. To obtain the source code, please write in English to: [info@speech.com](mailto:info@speech.com).

Neither Speech Processing Solutions GmbH nor its affiliates shall be liable to the purchaser of this product or third parties with respect to claims for damages, losses, costs or expenses incurred by purchaser or third parties as a result of an accident, misuse or abuse of this product or unauthorized modifications, repair, modification of the product or failure to meet the operating and maintenance instructions provided by the manufacturer.

This user manual is a document with no contractual nature. We accept no liability for changes, mistakes or printing errors.



Issue date 2021-07-06

© 2021 Speech Processing Solutions GmbH. All rights reserved.

Specifications are subject to change without notice. Philips and the Philips shield emblem are registered trademarks of Koninklijke Philips N.V. and are used by Speech Processing Solutions GmbH under license from Koninklijke Philips N.V. All trademarks are the property of their respective owners.