

2.1 CH MULTIMEDIA SPEAKER SYSTEM

IM210-BLK-BIG

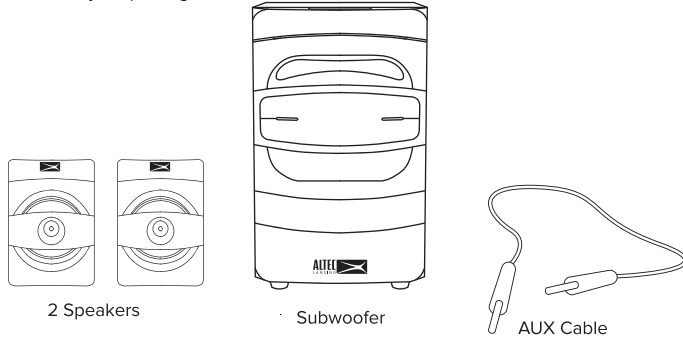


Quick Start Guide

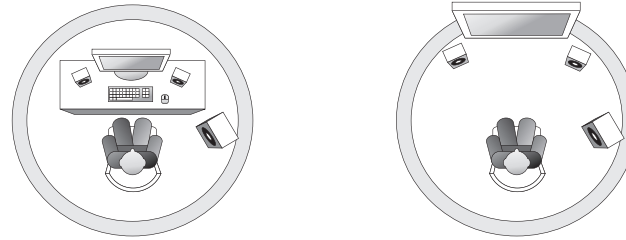
Item # IM210



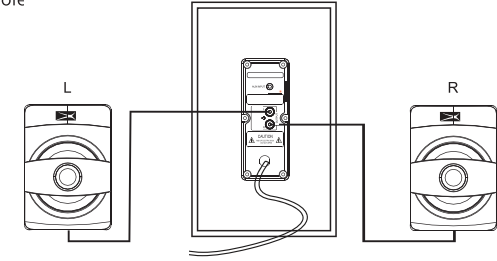
1. Make sure the following items are included in your package.



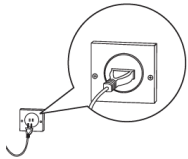
2. For best results, you should place your subwoofer directly on the floor. Typically, you would want one speaker placed directly to the left of a TV or computer monitor, and the other speaker placed directly to the right (see below).



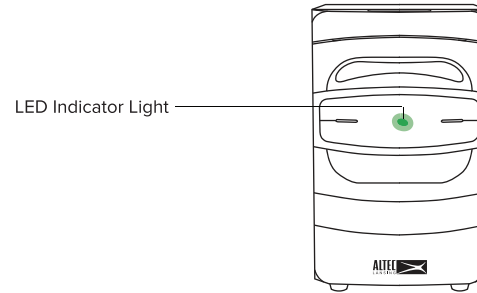
3. Next, you can proceed to connect your speakers to the subwoofer. To do so, insert the cable attached to the speaker which you have placed to your left into the left output jack on the rear of your subwoofer. Insert the cable attached to the speaker which you have placed to your right into the right output jack on the rear of your subwoofer.



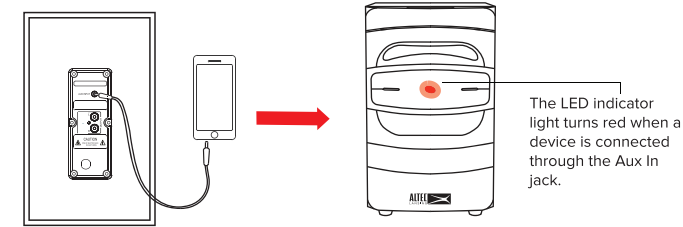
4. Once your speakers are connected properly, you can insert the power cable on your subwoofer into an available power outlet in your home.



5. After you plug in your speakers, the LED indicator light will briefly turn red, then start flashing green. The green flashing light indicates that your speakers are in pairing mode, and are ready to pair with a Bluetooth device.

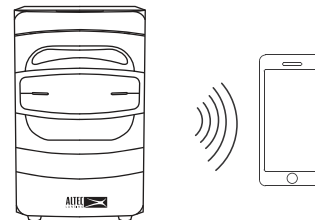
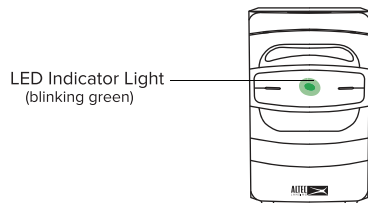


6. You can proceed to pair a Bluetooth device to your speakers (see step 7), or you can also use the included Aux Cable to connect audio devices through the AUX In jack on your subwoofer. The LED indicator light on your subwoofer turns red when an audio device is plugged in to the AUX in jack on your subwoofer.



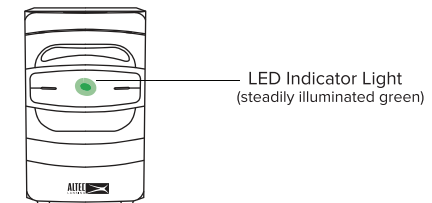
7. Pairing The Bluetooth 2.1 Soundsystem with a Bluetooth Device

When you first plug the power cable on your subwoofer into a suitable power outlet your speakers will power on. The LED indicator light on the subwoofer will soon turn green and start flashing rapidly to indicate that you are in pairing mode and are ready to pair your speakers wirelessly with a Bluetooth device. Make sure that you do not have the included Aux cable connected to your subwoofer, or you will not be able to enter pairing mode.



Go to the Bluetooth Manager of your Bluetooth device. Search Bluetooth devices and select "BT Speaker" to start connecting.

Once you have successfully paired your speakers with a Bluetooth audio source, the LED indicator light on your subwoofer will stop flashing rapidly, and begin shining steadily while remaining green. In addition, your speakers will emit an audible tone to confirm that pairing was successful.



2.1 CH MULTIMEDIA SPEAKER SYSTEM

IM210-BLK-BIG



Quick Start Guide

Item # IM210



Specifications

Power Audio: 6W+3Wx2(RMS)

Drive Units: 3" x 2 full range magnetically shielded + 4" subwoofer

Frequency Response: Satellites: 120Hz-20KHz

Subwoofer:20Hz-170Hz

Separation: ≥ 40 dB

S/N: ≥ 70 dB

Distortion: $\leq 0.5\%$ (1K, 1W)

Power Supply: $\sim 110V$ 60Hz

Dimensions: Subwoofer: W155xH262xD225(mm)

Satellite: W90xH130xD77(mm)



Important Safety Precautions

1. For best results, place your speakers on a solid, flat surface when in use.
2. Do not touch the metallic portions of your connector cables.
3. When unplugging your speakers from an AC power outlet, do not tug on the AC power cable, instead, pull carefully on the rubberized portion of the plug.
4. In order to avoid potential electric shock or other such accidents, do not dismantle or take apart your speakers or their components.
5. Keep the volume tuned to the lowest setting before powering your speakers on. Once powered, proceed to raise the volume to a reasonable level.
6. Do not expose your speakers to excessive amounts of heat or cold. Keep them in a well ventilated area to prevent any possible overheating.
7. Do not spill liquids or fluids on your speakers. Make sure they stay dry at all times.
8. When connecting an audio device to your speakers, make sure the volume on the audio device is not set too high in order to avoid an excessive signal input.



Technical Support

For technical support issues please visit our website at www.alteclansing.com. You can find manuals, software and FAQ's at the website. Can't find what you are looking for? Call 1-855-292-4087 to access our technical support information on the phone.

Altec Lansing One Year Warranty Card

This warranty covers the original consumer purchaser only and is not transferable.

This warranty covers products that fail to function properly UNDER NORMAL USAGE, due to defects in material or workmanship. Your product will be repaired or replaced at no charge for parts or labor for a period of one year.

What Is Not Covered by Warranty

Damages or malfunctions not resulting from defects in material or workmanship and damages or malfunctions from other than normal use, including but limited to, repair by unauthorized parties, tampering, modification or accident.

To Obtain Warranty Service and Troubleshooting information:

Call 1-855-292-4087 or Visit our website at www.alteclansing.com.

To receive Warranty service along with the name and address of an authorized product service center, the original consumer purchaser must contact us for problem determination and service procedures. Proof of purchase in the form of a bill of sale or receipted invoice, evidencing that the Product is within the applicable Warranty period(s), MUST be presented in order to obtain the requested service. It is your responsibility to properly package and send any defective products along with a dated copy of proof of purchase, a written explanation of the problem, and a valid return address to the authorized service center at your expense. Do not include any other items or accessories with the defective product. Any products received by the authorized service center that are not covered by warranty will be returned unrepaid.

NO WARRANTIES, WHETHER EXPRESS OR IMPLIED, INCLUDING, BUT NOT LIMITED TO, ANY IMPLIED WARRANTIES OF MERCHANTABILITY OR FITNESS FOR A PARTICULAR PURPOSE, OTHER THAN THOSE EXPRESSLY DESCRIBED ABOVE SHALL APPLY. DISTRIBUTOR FURTHER DISCLAIMS ALL WARRANTIES AFTER THE EXPRESS WARRANTY PERIOD STATED ABOVE. NO OTHER EXPRESS WARRANTY OR GUARANTY GIVEN BY ANY PERSON, FIRM OR ENTITY WITH RESPECT TO THE PRODUCT SHALL BE BINDING ON DISTRIBUTOR. REPAIR, REPLACEMENT, OR REFUND OF THE ORIGINAL PURCHASE PRICE - AT DISTRIBUTOR'S SOLE DISCRETION -ARE THE EXCLUSIVE REMEDIES OF THE CONSUMER. IN NO EVENT WILL DISTRIBUTOR, ITS MANUFACTURERS, OR SAKAR INT. BE LIABLE FOR ANY INCIDENTAL, DIRECT, INDIRECT, SPECIAL, PUNITIVE OR CONSEQUENTIAL DAMAGES (SUCH AS, BUT NOT LIMITED TO, DAMAGES FOR LOSS OF PROFITS, BUSINESS, SAVINGS, DATA OR RECORDS) CAUSED BY THE USE, MISUSE OR INABILITY TO USE THE PRODUCT. EXCEPT AS STATED HEREIN, NO OTHER WARRANTIES SHALL APPLY. NOTWITHSTANDING THE FOREGOING, CONSUMER'S RECOVERY AGAINST DISTRIBUTOR SHALL NOT EXCEED THE PURCHASE PRICE OF THE PRODUCT SOLD BY DISTRIBUTOR. THIS WARRANTY SHALL NOT EXTEND TO ANYONE OTHER THAN THE ORIGINAL CONSUMER WHO PURCHASED THE PRODUCT AND IS NOT TRANSFERABLE.

Some countries, states or provinces do not allow the exclusion or limitation of incidental or consequential damages or allow limitations on warranties, so limitation or exclusions may not apply to you. This warranty gives you specific legal rights, and you may have other rights that vary from state to state or province to province. Contact your authorized retailer to determine if another warranty applies. This product is manufactured, distributed and sold by SAKAR International, Inc. All other trademarks are the property of the respective owner, who has not sponsored, endorsed or approved this product.

FCC Part 15.19 Warning Statement

THIS DEVICE COMPLIES WITH PART 15 OF THE FCC RULES. OPERATION IS SUBJECT TO THE FOLLOWING TWO CONDITIONS: (1) THIS DEVICE MAY NOT CAUSE HARMFUL INTERFERENCE, AND (2) THIS DEVICE MUST ACCEPT ANY INTERFERENCE RECEIVED, INCLUDING INTERFERENCE THAT MAY CAUSE UNDESIRE OPERATION.

FCC Part 15.21 Warning Statement

NOTE: THE GRANTEE IS NOT RESPONSIBLE FOR ANY CHANGES OR MODIFICATIONS NOT EXPRESSLY APPROVED BY THE PARTY RESPONSIBLE FOR COMPLIANCE. SUCH MODIFICATIONS COULD VOID THE USER'S AUTHORITY TO OPERATE THE EQUIPMENT.

FCC Part 15.105 Warning Statement

Note: This equipment has been tested and found to comply with the limits for a Class B digital device, pursuant to part 15 of the FCC Rules. These limits are designed to provide reasonable protection against harmful interference in a residential installation. This equipment generates, uses and can radiate radio frequency energy and, if not installed and used in accordance with the instructions, may cause harmful interference to radio communications. However, there is no guarantee that interference will not occur in a particular installation. If this equipment does cause harmful interference to radio or television reception, which can be determined by turning the equipment off and on, the user is encouraged to try to correct the interference by one or more of the following measures:

- Reorient or relocate the receiving antenna.
- Increase the separation between the equipment and receiver.
- Connect the equipment into an outlet on a circuit different from that to which the receiver is connected.
- Consult the dealer or an experienced radio/TV technician for help.

RF warning statement:

The device has been evaluated to meet general RF exposure requirement.

To maintain compliance with FCC's RF exposure guidelines, this equipment should be installed and operated with a minimum distance of 20cm between the radiator and your body.