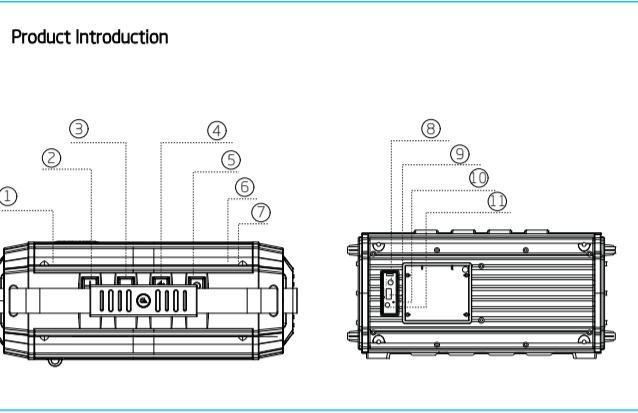


Pursue Your Dreams

Model: Tremor User Guide

BLUETOOTH SPEAKER
Trade Mark: DREAMWAVE
 Thank you for purchasing Tremor bluetooth speaker!
 Tremor built in bluetooth V4.0 with 50watts output.The compact size easy to carry out and enjoy the music from smart phone everywhere .Hope you will like it!!

Shenzhen L&Y Audio Co., LTD



- ① Micphone
- ② Volume+
- ③ Volume-
- ④ Bluetooth key
- ⑤ Standby
- ⑥ Pairing LED for Double up
Red flash—searching for pairing
Red solid—connected complete
- ⑦ Bluetooth & Line in LED
Solid Red— Line in mode
Flash Red—Low battery
Flash Blue fast—searching for pairing
Flash Blue slow—sync back
Blue solid —connect complete
- ⑧ 19V DC IN
- ⑨ 5V 1A DC OUT
- ⑩ Charge LED
Orange—battery charging
Red—charging complete
- ⑪ LINE IN

Technical Information

Power: 50w

IPX5

When you double up you turn two Tremors to left and right channels stereo sound.

CSR 4.0 A2DP AVECP

up to 20 hours play time at about 2/3 of full volume 8 hours at max volume/full bass status.

NFC Function

2 full range, 2 passive driver,
2 tweeter Hi-Fi digital amplifier,
Anti-Distortion circuitry.

HFC Function(hands free call)

USB port 5V/1A output rechargeable power bank for mobile devices

SIZE:440 x 178 x 170 mm

NET Weight: 6.0 kg

Power on/off

Press the button "⏏" to turn the speaker on or off.

Pairing and connecting bluetooth devices

- short Press "Ⓜ" to turn on the speaker and blue tooth . When the speaker emits a tone, the speaker will automatically search the one that have been synced together last time .If not yet find out in 15 seconds , the speaker will enter pairing mode by emits two tones, the Bluetooth LED keeps fast flashing in blue light searching for a Bluetooth source device to pair with ; or you can long press "Ⓜ" to directly enter pairing mode.
- Turn on your mobile devices or computer, search the "Tremor" on your device list . The Bluetooth LED change from fast flash to stable flash and the speaker emits a tone once connected successfully.
- Turn on the music from your mobile devices or computer , press "⏏" to pause / play the music , press "VOL+ / VOL-" to adjust the volume of speaker.

4. Press "⏏" to answer / hang up the phone call.

5. After mobile devices or computer have been synced together for the last time, they will then automatically synced together.

Double Up Mode

- Take one speaker as the main speaker ,repeat the same operations step 1 and Step 2 as described above to connect to your mobile devices or computer first.
- short Press "Ⓜ" to turn on another speaker and the bluetooth . When the speaker emits a tone ,long press "Ⓜ" by emits two tones continually and the pairing LED keeps fast flashing, the speaker enter "Double Up" mode .
- In this mode , the main speaker start to search co- speaker for pairing , the speakers will emits a tone and the pairing LED become solid once connect successfully , in this mode, the two speakers play as a stereo pair, the one connected to source devices dedicated to the left channel as the main speaker, another one dedicated to the right channel as the co-speaker.

- Turn on the music from your mobile devices or computer , press "▶|◀" in any speaker to play or pause the music .
- Press "Ⓜ" to answer / hang up the phone call (main speaker)
- Once power off co- speaker ,the main speaker will exit from "Double Up" mode .
- After two tremors exit from "Double Up" mode , they will not automatically Double Up the next time ,repeat the steps as described above to Double Up again .
- when two Tremors enter Double Up mode . Press "VOL+" or "VOL-" can adjust the volume of individual speaker, to control the volume of both speaker at the same time ,you can adjust the volume of your mobile devices or the computer .

Notes: a. Any problem occurred , power off the speaker and restart again 3 seconds after .
 b. Playback/forward/pause operation in the speakers don't support some music players .
 c. If you can't play the music in the speaker however it show well connected already, restart the Bluetooth in your mobile / computer devices , play it again after re-connect successfully .

Notice for "Double Up" mode

- You can only enter "Double Up" mode when the speakers without playing music.
- You can only successfully "Double Up" when the Co-speaker not connected to any mobile & computer devices.
- If co-speaker already connect to your mobile & computer devices (indicated as Bluetooth LED keep solid) , you shall cut off the connection and restart again to pair successfully.
- For Apple devices ,please clean all Tremor record when both speakers had been ever connected to the devices, otherwise they will automatically sync back to fail the accessing of Double Up mode .

NFC features

Turn on the mobile phone/tablet with NFC features and put the mobile phone/tablet on top of the device's NFC logo.The mobile phone/tablet will then search for a device to pair with . Connect to "Tremor" to pair. To disconnect,put the mobile phone/tablet on top of the device's NFC logo again.

Using the LINE IN the connector

A stereo audio cable with 3.5 mm plugs each end is required connect the audio output of PC or MP3/CD players,ect.device to the LINE IN input on the speaker.

Adjust the volume on the connected device to near maximum,then use the Tremor speaker volume buttons to adjust the volume level.

Special features

- Bluetooth wireless signal transmission protocol.
- Line in input,compatible with PC/MP3/CD/mobile devices and other audio sources.
- Support phone hands-free.
- Wireless twins speaker
- Support NFC

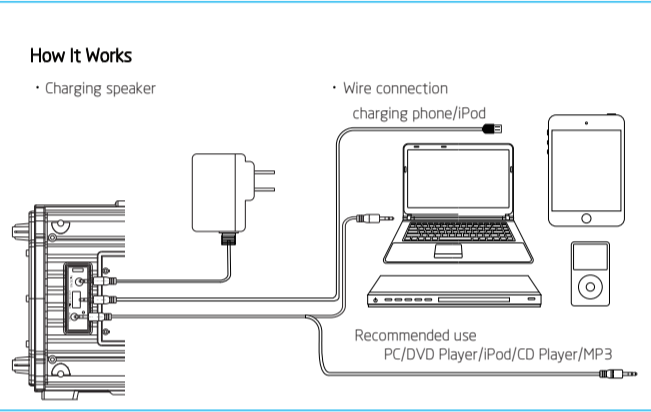
Battery Charging

Recommended charging time is three hours to fully charge the battery. The indicator of the charging status lights when the battery charging. Charging status lights went out when the battery full charge. Connect it to DC 19V IN to reactivate the speaker when the speaker not turn on.

Protection mode

If the speaker is unplugged and unused for more than 24 days , or if the speaker is stored with a blinking red status indicator, it enters battery protection mode to preserve battery power. To reactivate the speaker,connect it to DC 19V IN.

Note:
 *If the device is not connected to the Bluetooth speaker ,please shut down and several seconds after the restart , and connect with the Bluetooth speaker .



What's in the box

- Tremor X 1
- Ac adaptor X 1
- AUX cable X 1
- User guide X 1

Trouble shooting

- Applicable To: All DreamWave Bluetooth speakers
- The trouble shooting steps in this article apply if audio is intermittent, crackling or distorted when streaming via Bluetooth.

- Try playing other audio files. Ensure that audio can play fine from the same audio device when using a headphone.
- If Step 1 is not the case, try listening to audio by connecting the speaker to the Bluetooth device using the Aux-in cable. This will isolate if it's a Bluetooth connection issue or not. Remember to disconnect/un-pair the Bluetooth connection first.
- If the issue only happens when connecting via Bluetooth, do the following:

- Make sure what you are connecting is this speaker (select "Tremor" within the Bluetooth list on your device)
- Make sure the volume is not in the minimum
- Adjust the distance between the speaker and the Bluetooth device.
- Reset the speaker to its factory default settings.
- Clear the current pairing entry from your Bluetooth device.
- To isolate ,close other devices Bluetooth
- Try re-pairing the speaker and the Bluetooth device.

4.If the issue happens when connecting either on Bluetooth or Aux-in, please contact DreamWave Customer Support via email.

FCC Warning:

This equipment has been tested and found to comply with the limits for a Class B digital device, pursuant to part 15 of the FCC Rules. These limits are designed to provide reasonable protection against harmful interference in a residential installation. This equipment generates, uses and can radiate radio frequency energy and, if not installed and used in accordance with the instructions, may cause harmful interference to radio communications. However, there is no guarantee that interference will not occur in a particular installation. If this equipment does cause harmful interference to radio or television reception, which can be determined by turning the equipment off and on, the user is encouraged to try to correct the interference by one or more of the following measures:

- Reorient or relocate the receiving antenna.
- Increase the separation between the equipment and receiver.
- Connect the equipment into an outlet on a circuit different from that to which the receiver is connected.
- Consult the dealer or an experienced radio/TV technician for help.

Caution: Any changes or modifications to this device not explicitly approved by manufacturer could void your authority to operate this equipment.

This device complies with part 15 of the FCC Rules. Operation is subject to the following two conditions: (1) This device may not cause harmful interference, and (2) this device must accept any interference received, including interference that may cause undesired operation.

This equipment complies with FCC RF radiation exposure limits set forth for an uncontrolled environment. This device and its antenna must not be located or operating in conjunction with any other antenna or transmitter.

The device has been evaluated to meet general RF exposure requirement. The device can be used in portable exposure condition without restriction.

CAUTION

This symbol indicates that there are important operation & maintenance instructions in the literature accompanying this unit.

RISK OF ELECTRIC SHOCK,DO NOT OPEN

This symbol indicates that there are important operation & maintenance instructions in the literature accompanying this unit.

WARNING

To reduce the risk of fire or electrical shock,do not expose this product to rain or moisture.The product must not be exposed to dripping and splashing and no object filled with liquids,such as a vase of flowers,should be placed on the product.

CAUTION Changes or modifications not expressly approved by the manufacturer could void the user's authority to operate this device.

CAUTION To prevent electric shock ,match wide blade of plug to wide slot,full insert.

FCC ID:2A028L8285 CE RoHS Recycle No fire

www.godreamwave.com