

tbpt

THE BEST PET TRACKER

tbpt Tracker Quick Guide



Features:

1. No more platform fee, just download the free exclusive smart phone application, you can start tracking tbpt tracker device.
2. Need one SIM card to insert into the tbpt tracker device.
3. Tracking feature:GPS/AGPS/GSM/SMS/LBS
4. Operation: - Support Google map.
- GPS fix data send to owner's cell phone.
5. Pet's owner only need to call the Number of the SIM card in the device, then it will respond the data automatically.
6. 8 pin USB for Charging.
7. Battery (Li-Polymer) is 500mAh
8. **Tbpt tracker for GPRS**

3 Charging and Clip assembling

1. Connect the pet tracker to the AC Adapter via the USB cable.
2. 1~2 hours for the fully charge

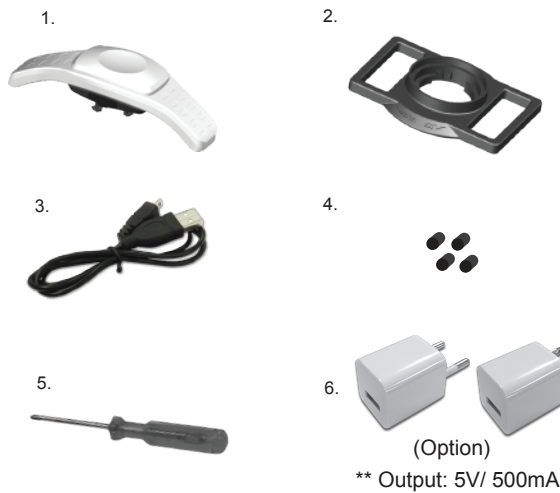


Put the collar through the clip.



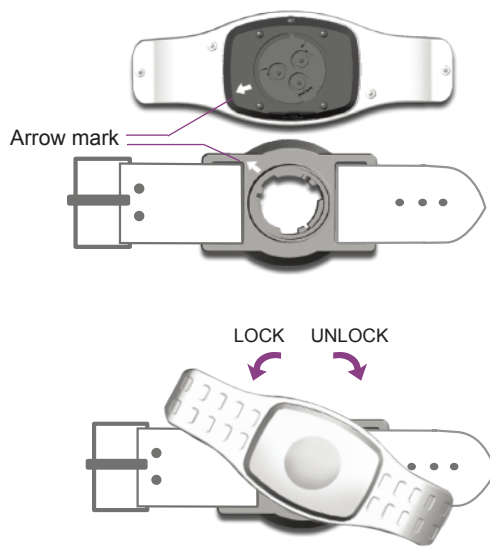
1 Box includes

1. The tbpt tracker
2. Clip
3. USB Cable
4. Waterproof plug
5. Screwdriver
6. AC Adapter



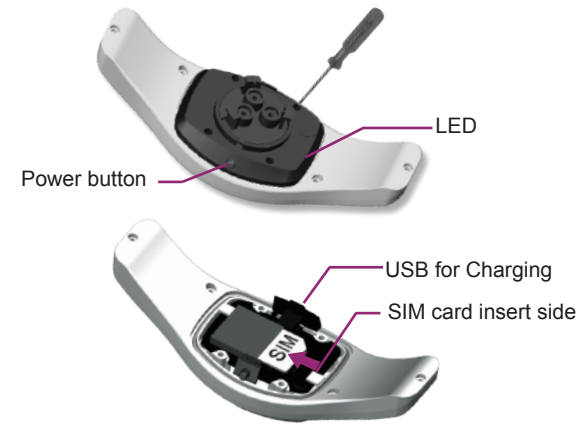
4 Buckle Clip

Assemble pet tracker and the clip according to the arrow mark on the both side. And turn counterclockwise to lock it.



2 Installing SIM card

1. Loosen 4 screws with the screw driver.
2. Remove the back cover and insert the SIM card into the holder with the gold-colored contacts facing downwards.
3. Put the cover back with the USB side and tighten 4 screws back.
4. insert four waterproof plugs over the screws.
5. Press power button for 2 seconds to turn on pet tracker.



5 Warning

! Please make sure the SIM card is already activated and ready to use. Additionally, confirm the PIN code is free before install the SIM card. If not, please use other mobile phone to cancel the PIN code or ask the local carrier for more information. The pet tracker only supports GSM and GPRS system. Therefore, it is not working with CDMA or WCDMA system. We recommend charging as soon as you receive the low battery notification. Please set the low power alert before use tbpt tracker.



CE
This device complies with the R&TTE Directive (99/5/EC), the EMC Directive (2004/108/EC), and the Low Voltage Directive (2006/95/EC) issued by the Commission of the European Community. A minimum separation distance of 20 cm must be maintained between the user's body and the device, including the antenna during body-worn operation to comply with the RF exposure requirements in Europe.



FCC
Federal Communication Commission Interference Statement. This device complies with Part 15 of the FCC Rules. Operation is subject to the following two conditions: (1) This device may not cause harmful interference, and (2) this device must accept any interference received, including interference that may cause undesired operation. This equipment has been tested and found to comply with the limits for a Class B digital device, pursuant to Part 15 of the FCC Rules. These limits are designed to provide reasonable protection against harmful interference in a residential installation. This equipment generates, uses and can radiate radio frequency energy and, if not installed and used in accordance with the instructions, may cause harmful interference to radio communications. However, there is no guarantee that interference will not occur in a particular installation. If this equipment does cause harmful interference to radio or television reception, which can be determined by turning the equipment off and on, the user is encouraged to try to correct the interference by one of the following measures:

- Reorient or relocate the receiving antenna.
- Increase the separation between the equipment and receiver.
- Connect the equipment into an outlet on a circuit different from that to which the receiver is connected.
- Consult the dealer or an experienced radio/TV technician for help.

FCC Caution:

- Any changes or modifications not expressly approved by the party responsible for compliance could void the user's authority to operate this equipment.
- This transmitter must not be co-located or operating in conjunction with any other antenna or transmitter.

Radiation Exposure Statement:

This device meets the government's requirements for exposure to radio waves. This device is designed and manufactured not to exceed the emission limits for exposure to radio frequency (RF) energy set by the Federal Communications Commission of the U.S. Government. The exposure standard for wireless device employs a unit of measurement known as the Specific Absorption Rate, or SAR. The SAR limit set by the FCC is 1.6W/kg. *Tests for SAR are conducted using standard operating positions accepted by the FCC with the device transmitting at its highest certified power level in all tested frequency bands.

1 Download APP



QR Code



You can search "tbpt Tracker" on the Google play and download the application.

! The mobile antivirus APP and the SMS filter APP may cause tbpt dysfunctional

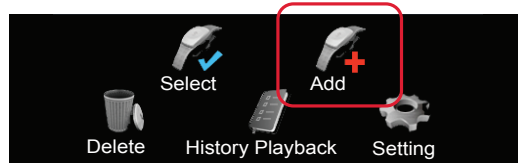
★ Standby Mode

The standby mode will be activated automatically if the tbpt tracker keeps still for 3 minutes (GSM off /GPS off). The tbpt tracker cannot be tracked under standby mode. Please touch the tbpt tracker slightly to wake it up.

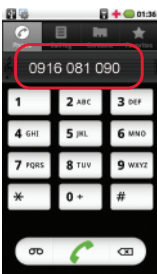


2 Add device

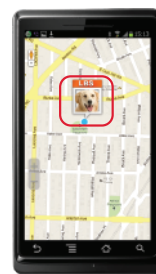
1 Add device



2 Please dial the SIM card number manually, and hang up phone after hearing ringtone.

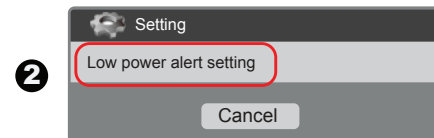
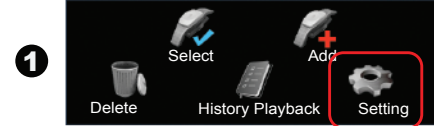


3 You will get the current location.

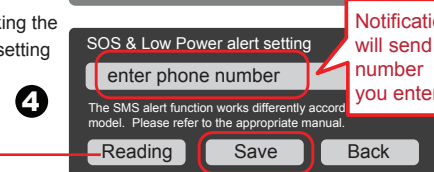


3 Low power alert setting

★ When the device is in low power, it will send alert SMS to notification number



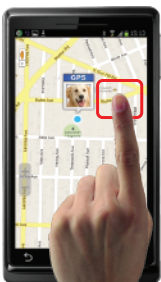
Reading:
For checking the previous setting number.



Notification SMS will send to the number you entered.

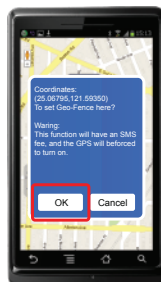
4 Geo-Fence Setting

1 Tap any location on the map for 3 seconds as central point for Geo-Fence

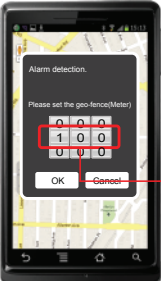


This function may cause extra SMS charge, when using Geo-Fence, GPS will be forced to turn on.

2 Tap ok



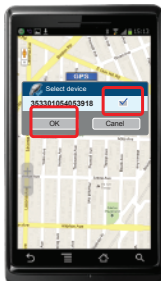
3 Distance setting



Inclusion: Alert SMS will be sent when the pet run out of the Geo-Fence area you set.

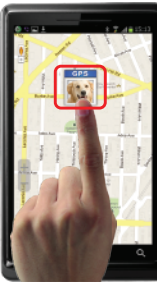
Set the diameter (meter) of the Geo-Fence

4 Select device Tap ok



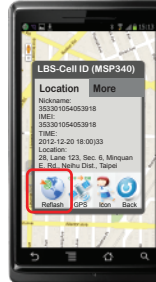
5 Real-time Tracking

1 Tap Icon

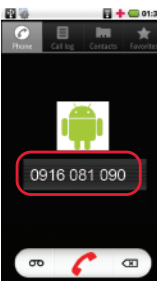


GPS: GPS location
LBS: LBS (LAC cell ID)

2 Refresh



3 Dial the SIM card number



APP will dial the device automatically. It will hang up automatically. (Some smart phone will not hang up automatically)

4 Real-time location

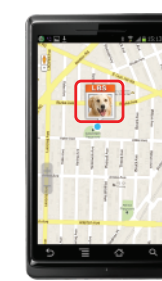


6 GPS Setting

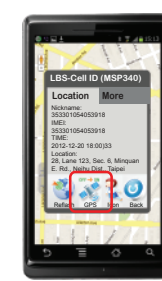


The default setting is GPS off, so you will only receive the LBS (LAC cell ID) position. The purpose is power saving.

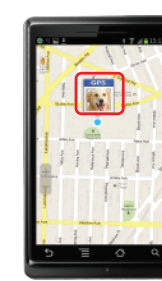
The deviation of LBS position in the city is 100~300meter and in the county side is 500meter~1kilometer. If you prefer more precise location, you may turn on the GPS. Please note that using GPS may cause higher power consuming



Tap the icon



Tap the GPS icon to turn on/off GPS



It may take seconds to have the GPS fixed. Wait for a moment and refresh again to get GPS location