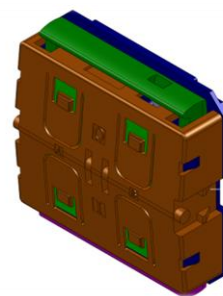


Self-powered Wireless Switch Module WSM 100

Datasheet

WSM 100 is composed of a high efficient generating module and a RF transmitting module with low power consumption. The inner generating component can supply RF transmitting module with power, so that it can transmit radio message. WSM 100 can be used as a part of wall switch with one rocker or two rockers and even the single-cycle switch with four keys. Working with different receiver module, it can be applied to common switch for lighting, dimmer switch, contain-controlled switch and key-card switch.



Basic Theory

There is a magic generating component with high efficiency inside WSM 100, which can generate electricity by pressing the “generating bow”. Every time you press the “generating bow”, the inner generating component will generate electricity one time; Every time you release the “generating bow”, the “generating bow” and the inner generating component will go back to its original place automatically and generate electricity again.

When the generation module generates one time, the RF module will transmit message one time. The message includes the information of the ID of the module. At the same time, the radio message includes the information of the bow’s action of “up” or “down”. Besides, it also includes the information of 4 contacts, which is used to identify different rocker by knowing which contact is pressed.

Technical Data

Power supply	self-powered by inner generating module
Antenna	wired antenna, 19 cm
Frequency	433.92 MHZ
Transmitting power	10dBm
Data rate	250Kbps
Telegram content	unique ID: 32 bits
Transmitting distance	outdoor: > 80m, indoor: >30m
Energy bow travel/Operating force	2.0mm / 7N
Number of operations	>50 000 次
Module dimensions	40 * 40 * 11.2 mm
Operating temperature	-40°C -- 65°C

FCC Information and Copyright

This equipment has been tested and found to comply with the limits for a Class B digital device, pursuant to part 15 of the FCC Rules.

These limits are designed to provide reasonable protection against harmful interference in a residential installation. This equipment generates,

uses and can radiate radio frequency energy and, if not installed and used in accordance with the instructions, may cause harmful interference

to radio communications. However, there is no guarantee that interference will not occur in a particular installation. If this equipment does

cause harmful interference to radio or television reception, which can be determined by turning the equipment off and on, the user is

encouraged to try to correct the interference by one or more of the following measures:

- Reorient or relocate the receiving antenna.
- Increase the separation between the equipment and receiver.
- Connect the equipment into an outlet on a circuit different from that to which the receiver is connected.
- Consult the dealer or an experienced radio/TV technician for help.

15.19 Labelling requirements.

This device complies with part 15 of the FCC Rules. Operation is subject to the following two conditions:

- (1) This device may not cause harmful interference, and
- (2) this device must accept any interference received, including interference that may cause undesired operation.

changes or modifications not expressly approved by the party responsible for compliance could void the user's authority to operate the equipment.