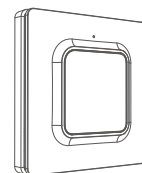


Product Introduction

K9B Series Self-powered BLE Wireless Switch



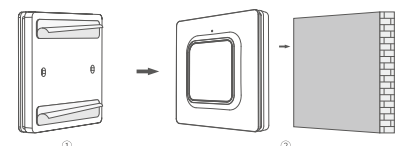
(Single-button Switch)

Linpotech K9B series self-powered BLE wireless switch, which is a BLE broadcast transmitter with no wiring and batteries, and can be used with the corresponding receiver/wall switch/gateway to achieve lighting control, interaction and other functions, please refer to the instruction manual to learn the specific use methods and pairing operation. The K9B series self-powered BLE wireless switch is used innovative self-powered technology to collect the energy at the moment of switch action for sending wireless signals without batteries, eliminating the trouble of battery replacement and protecting the environment.

Installation Instruction

Option 1:

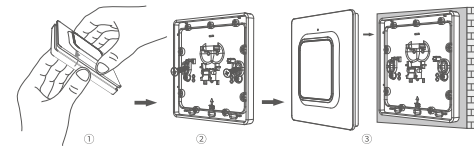
Tear off the double-sided tape and stick it on the wall if the wall is clean.



①Tear off one side of the double-sided tape and stick it onto the back of the switch, and then remove the protective film of the double-sided tape. ②Stick the switch onto the wall and press firmly.

Option 2:

Install the switch in the position of the original switch by using screws.



①Pull up to remove the back cover. ②Install the back cover onto the 86mm switch case with screws. ③Push the switch onto the back cover.

Product Parameter

Model	K9B-W1/K9B-W2/K9B-W3
Power Supply	Self-powered(without extra power supply)
Wireless Range	About 50m (outdoor,work with Linpotech wall switch)
Working Environment	Temperature:-10°C~40°C

Environmental protection

The device and its accessories (if included) should not be disposed of with household garbage. Disposal of the device and its accessories is subject to local regulations. Support proper collection and recycling.

Disposal and recycling information



This symbol (with or without a solid bar) on the device, and/or the packaging, indicates that the device and its electrical accessories (for example, a cable) should not be disposed of as household garbage. These items should not be disposed of as unsorted municipal waste and should be taken to a certified collection point for recycling or proper disposal. For more detailed information about device, contact your local city office, household waste disposal service, or retail store. Disposal of the device is subject to WEEE Directive Recast (Directive 2012/19/EU). The purpose of separating WEEE from other waste is to minimize the potential environmental impacts and human health risk of any hazardous substances that may be present.

Reduction of hazardous substances This device is compliant with the REACH Regulation [Regulation (EC) No 1907/2006] and RoHS Directive Recast (Directive 2011/65/EU).

EU regulatory conformance Statement

Hereby, Wuhan Linpotech Co., Ltd. declares that this device is in compliance with the essential requirements and other relevant provisions of 2014/53/EU.

The following marking is included in the product:



This device may be operated in all member states of the EU. Observe national and local regulations where the device is used. This device may be restricted for use, depending on the local network. Restrictions in the 2.4 GHz band: Norway: This subsection does not apply for the geographical area within a radius of 20 km from the centre of Ny-Ålesund.

FCC Warning

This device complies with part 15 of the FCC Rules. Operation is subject to the following two conditions: (1) This device may not cause harmful interference, and (2) this device must accept any interference received, including interference that may cause undesired operation.

Note: This equipment has been tested and found to comply with the limits for a Class B digital device, pursuant to part 15 of the FCC Rules. These limits are designed to provide reasonable protection against harmful interference in a residential installation. This equipment generates, uses and can radiate radio frequency energy and, if not installed and used in accordance with the instructions, may cause harmful interference to radio communications. However, there is no guarantee that interference will not occur in a particular installation. If this equipment does cause harmful interference to radio or television reception, which can be determined by turning the equipment off and on, the user is encouraged to try to correct the interference by one or more of the following measures:

- Reorient or relocate the receiving antenna.
- Increase the separation between the equipment and receiver.

—Connect the equipment into an outlet on a circuit different from that to which the receiver is connected.

—Consult the dealer or an experienced radio/TV technician for help.

Note: The Grantee is not responsible for any changes or modifications not expressly approved by the party responsible for compliance. such modifications could void the user's authority to operate the equipment. The device has been evaluated to meet general RF exposure requirement. To maintain compliance with FCC's RF exposure guidelines, the distance must be at least 20 cm between the radiator and your body, and fully supported by the operating and installation configurations of the transmitter and its antenna(s).

**Self-powered BLE Wireless Switch
User Manual V1.1
Model:K9B-W1,K9B-W2,K9B-W3**

Please read this user manual carefully before using the product and keep it properly.