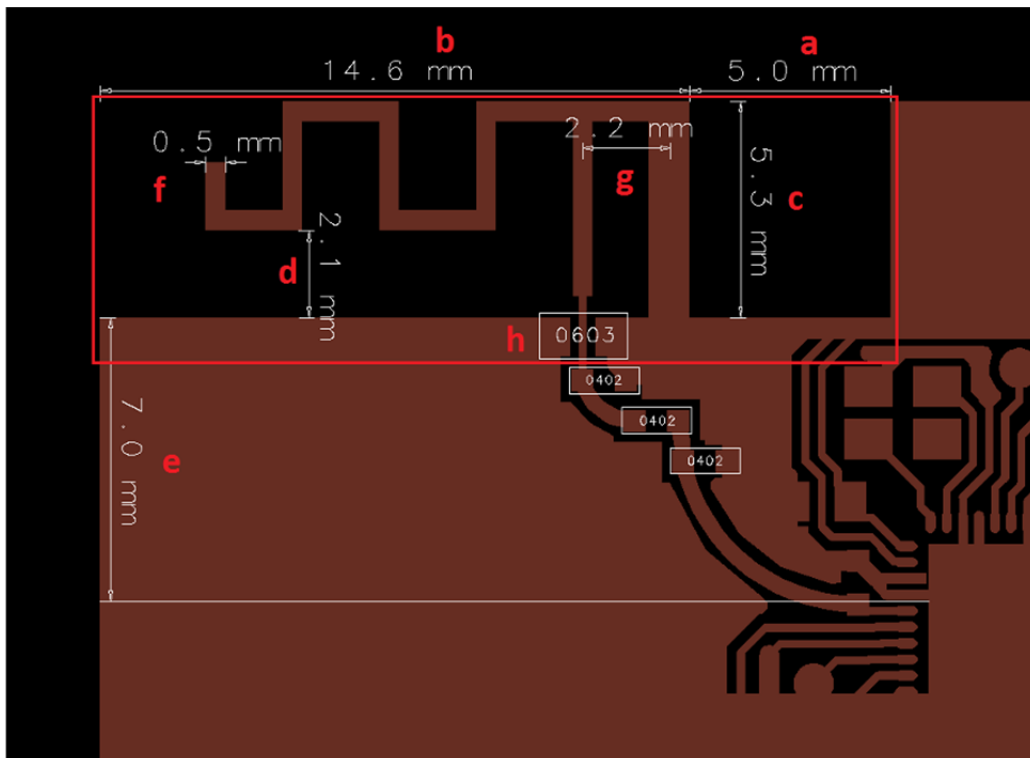


ITEM		specification		
Manufacturer		Wuhan Linptech Co.,Ltd.		
Model		K9B-ATM		
Frequency Range		2402~2480MHz		
VSWR		3:1MAX		
Polarzation		Linear		
Frequency [MHz]		2402	2440	2480
Gain ( dBi )	Peak	1.428	1.812	1.733
	Average	-	-	-
Efficiency [%]		78	84	76

Antenna Dimensions

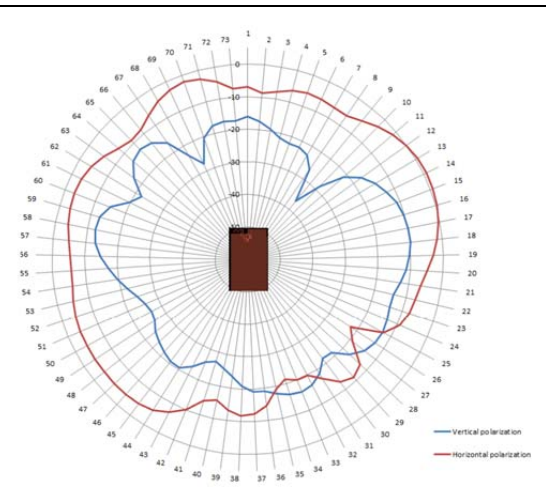


a. Clearance between antenna arm and GND plane right.

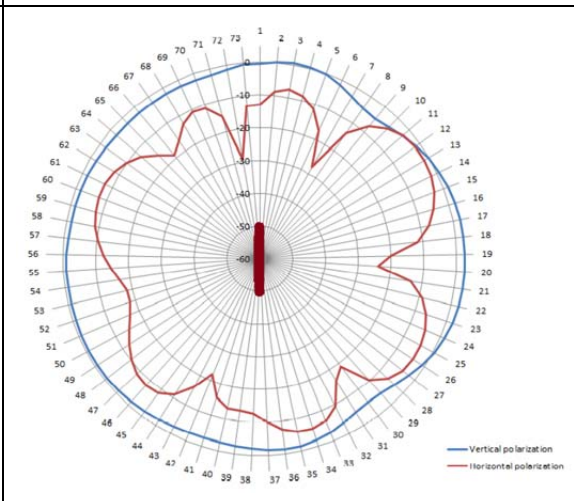
b. Antenna width.

- c. Antenna height.
- d. Clearance between the antenna arm and GND plane below.
- e. Minimum GND plane size required for correct operation of the antenna.
- f. Antenna trace width.
- g. Feed point position.
- h. 0603 resistor used to connect the two sides of the GND planes.
  - i. When no DC connection is required, a 10 pF capacitor can also be used.
  - ii. This component is essential for the correct operation of the antenna.

Radiation Pattern, PCB Horizontal



Radiation Pattern, PCB Vertical



SWR



Smith Chart

