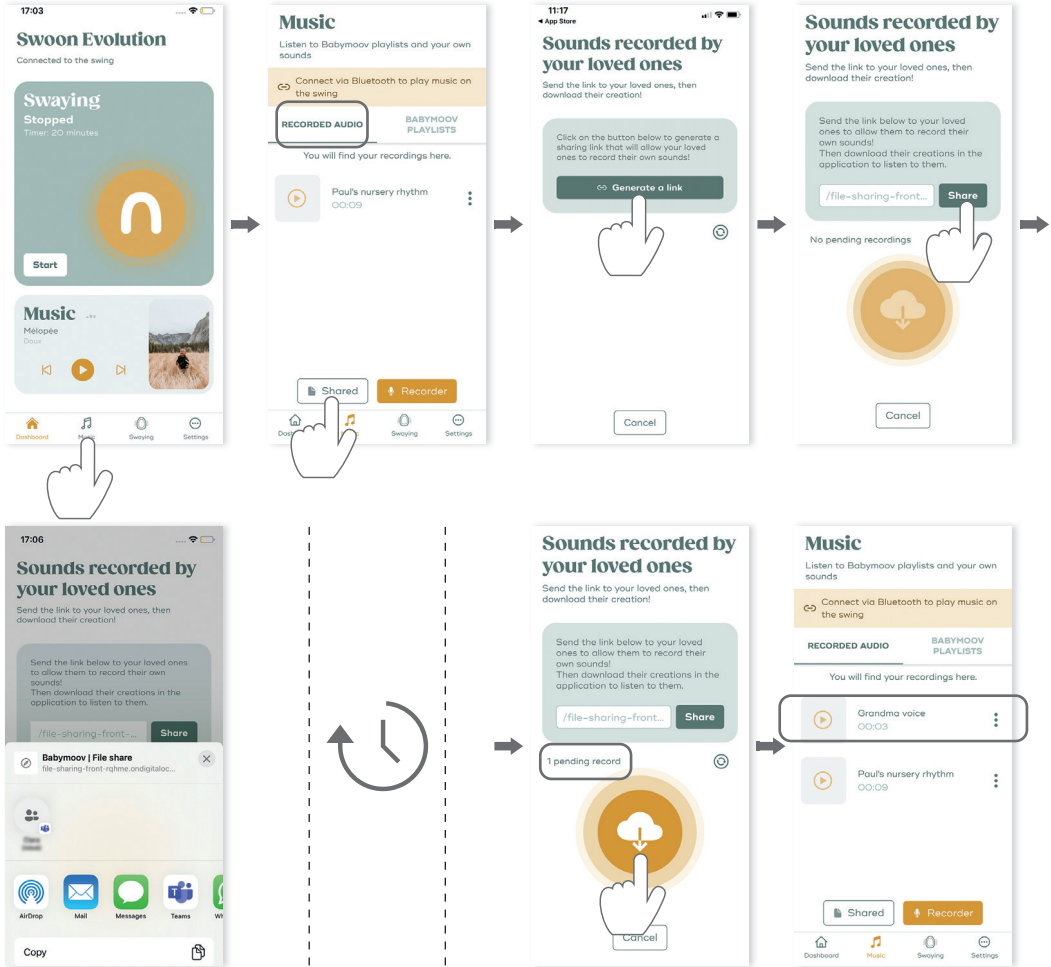


# 6.

## EN. RECORDING AND PLAYING SOUNDS FROM FRIENDS AND FAMILY

## ES. GRABAR Y DIFUNDIR LOS SONIDOS DE SUS SERES QUERIDOS

## FR. ENREGISTRER ET DIFFUSER LES SONS DE SES PROCHES

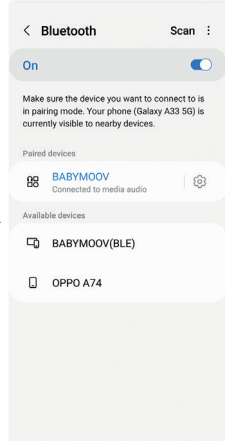
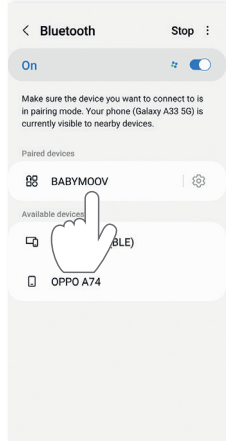
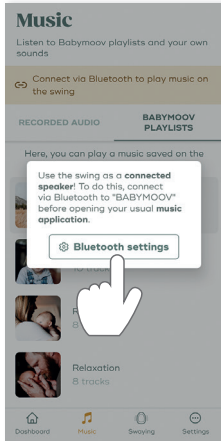


# 7.

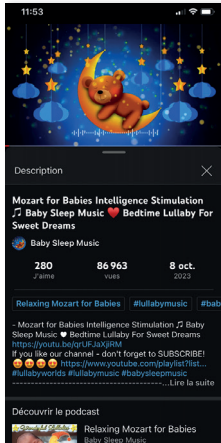
## EN. PLAYING SOUNDS FROM MUSIC STREAMING PLATFORMS

## ES. DIFUNDIR SONIDOS DE PLATAFORMAS DE STREAMING MUSICAL

## FR. DIFFUSER DES SONS DE PLATEFORMES DE STREAMING MUSICAL



MUSIC APP

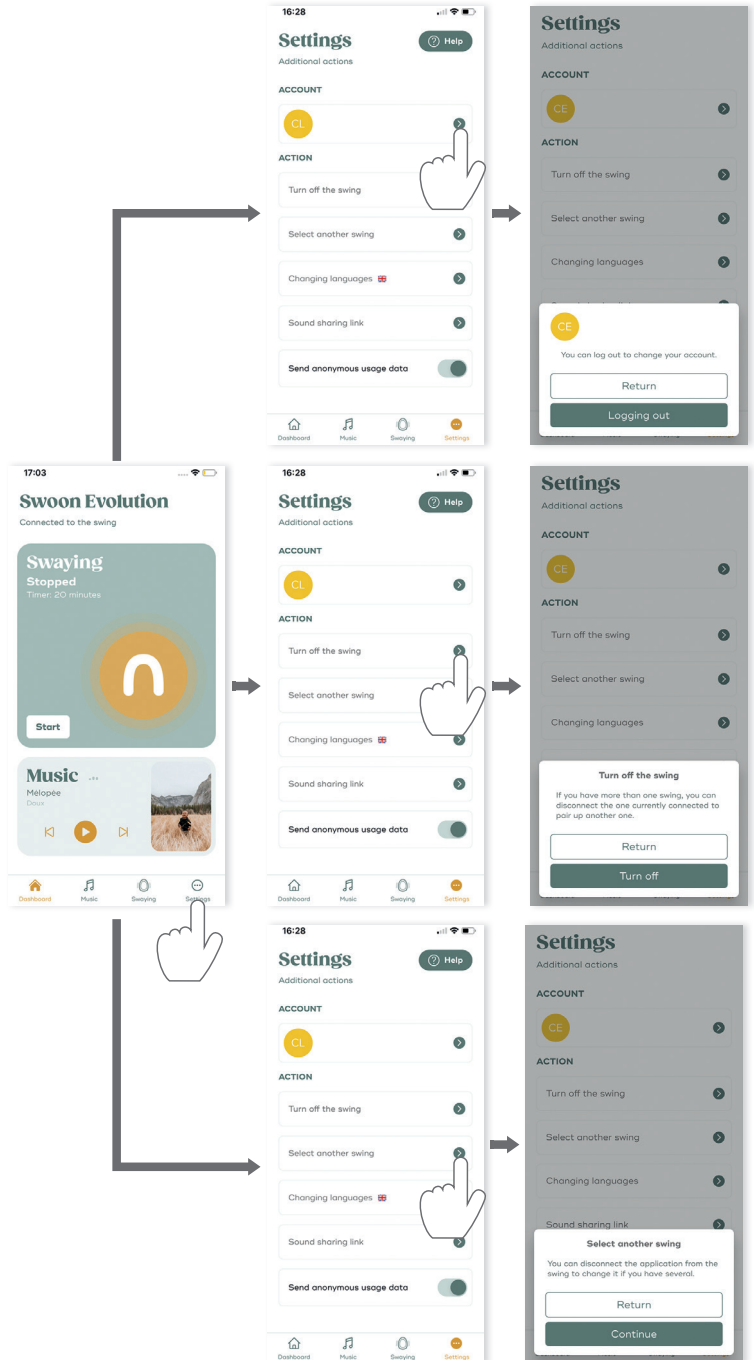


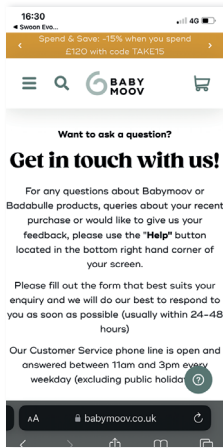
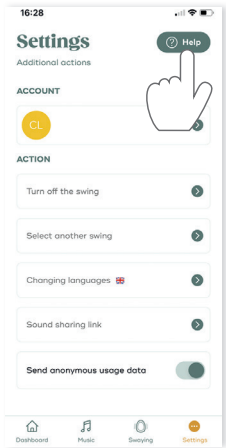
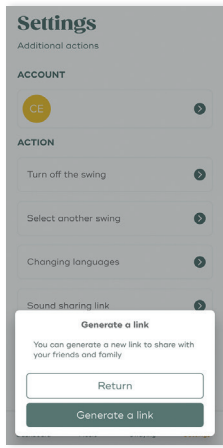
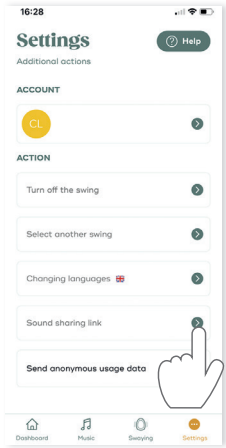
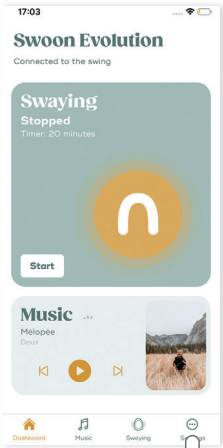
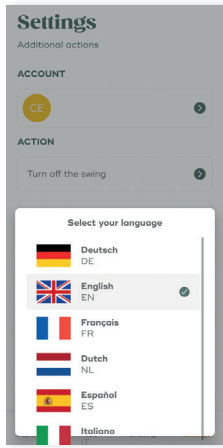
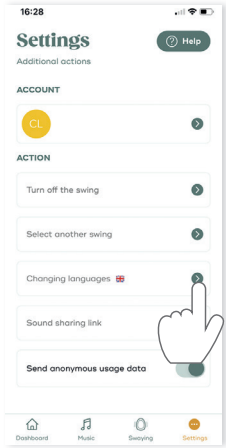
# 8.

EN. APP SETTINGS

FR. RÉGLAGES DE L'APPLICATION

ES. AJUSTES DE LA APLICACIÓN





## K.

### **EN. WASHING MAINTENANCE INSTRUCTIONS**

- Check the cradle swing frequently to make sure there are no loosened screws, worn components, torn fabric, or undone stitches.
- Replace or repair the components if necessary. Only use spare parts recommended by Babymoov.
- Excessive exposure to the sun or heat may cause the cradle's components to be discoloured or deformed.
- The newborn insert is machine washable on cold gentle cycle, 600 RPM spin.
- The main cover can be handwashed or machine wash on delicate cycle.

### **ES. MANTENIMIENTO E INSTRUCCIÓN DE LAVADO**

- Compruebe a menudo el balancín para asegurarse de que no haya tornillos flojos, piezas usadas, tejidos rasgados, o puntos descosidos.
- Mande sustituir o reparar las piezas si fuera necesario. Utilizar solamente piezas sueltas aconsejadas por Babymoov.
- Una exposición excesiva al sol o al calor puede causar la decoloración o el alabeo de las piezas
- El cojín reductor puede lavarse en la lavadora a 30 °C y centrifugarse a 600 rpm.
- La funda principal puede lavarse a mano o en la lavadora, en un programa delicado.

### **FR. ENTRETIEN ET INSTRUCTION DE LAVAGE**

- Vérifiez souvent la balancelle pour s'assurer qu'il n'y ait pas de vis desserrées, de pièces usées, de tissus déchirés, ou de points décousus.
- Faites remplacer ou réparer les pièces si nécessaire. N'utilisez que des pièces détachées conseillées par Babymoov.
- Une exposition excessive au soleil ou à la chaleur peut provoquer la décoloration ou le voilage des pièces.
- Le coussin réducteur est lavable à 30 °C 600T/min en machine.
- La housse principale est lavable à la main ou en machine programme délicat.





**EN.**

\* **Lifetime warranty.** Register within 2 months. See conditions at [babymoov.us](http://babymoov.us)

**FR.**

\* **Garantie à vie.** Enregistrement sous 2 mois. Voir conditions sur le site web Babymoov.

**ES.**

\* **Garantía de por vida.** Registrar en los 2 meses posteriores a la fecha de compra. Consulte las condiciones en la web de Babymoov.

ALT Group Babymoov Corp.  
46 Route 156, Suite 8  
YARDVILLE, NJ 08620  
USA

**[www.babymoov.us](http://www.babymoov.us)**  
**Hotline:** 1-855-517-2456

Designed and engineered  
by Babymoov in France