

8-72737A-24

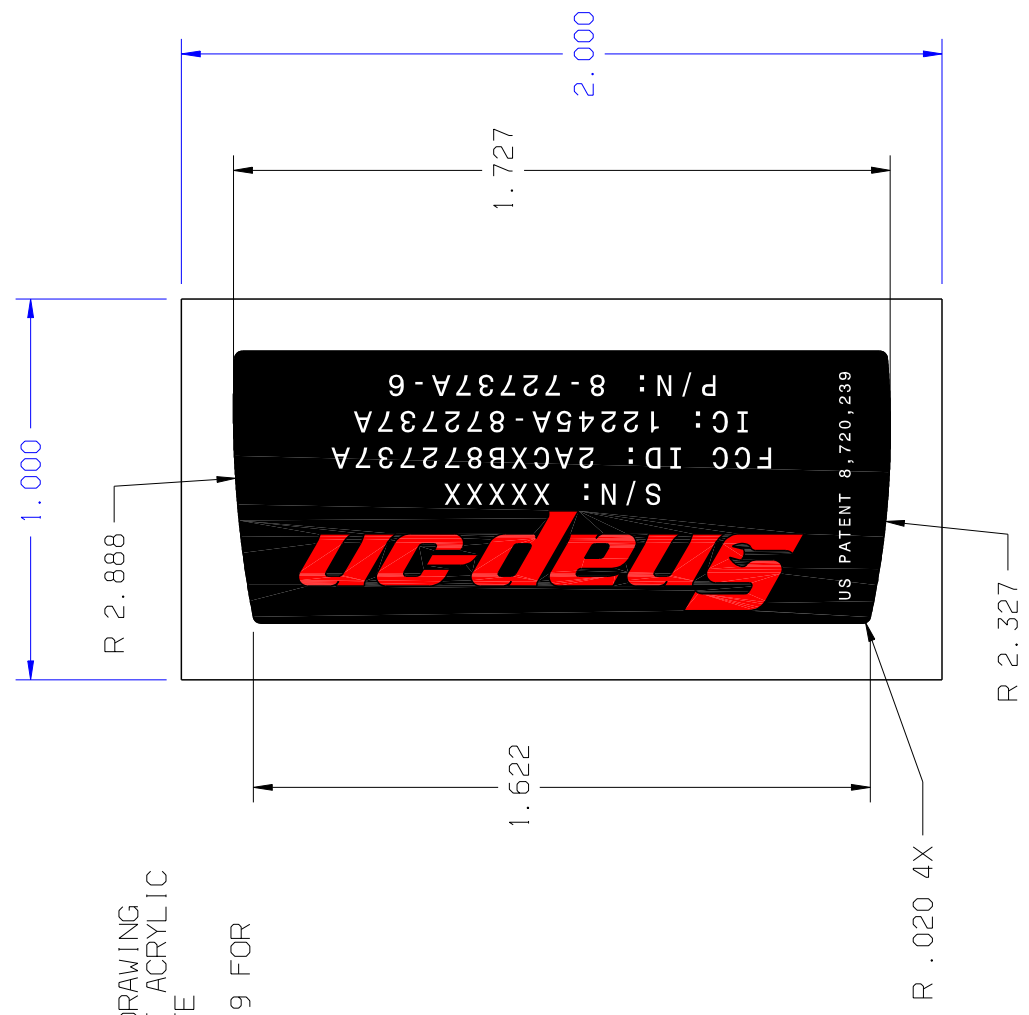
THE DATA, DRAWINGS AND INFORMATION CONTAINED ON THIS DOCUMENT, IS CONFIDENTIAL AND THE SOLE PROPERTY OF SNAP-ON INCORPORATED. IT MAY NOT BE REPRODUCED, USED, OR DISCLOSED WITHOUT WRITTEN PERMISSION OF AN OFFICER OF SNAP-ON INCORPORATED. COPYRIGHT 2014

TOLERANCES UNLESS OTHERWISE SPECIFIED  
 1. DIMENSIONS ± .000  
 2. PLACE DECIMAL ± .005  
 3. HOLE DIAMETER ± .005  
 4. ANGULAR ± 1°  
 5. G&T PERASME Y14.5M-1994

FINISH -  
 MAT'L SEE NOTES

SUPERSEDE -  
 USE -  
 HEAT TR -

- NOTES:
1. MATERIAL: 0.004" WHITE VINYL
  2. COLORS: PMS 485 RED, AND BLACK
  3. METHOD OF PRINTING: SILKSCREEN
  4. METHOD OF TRIMMING: DIE CUT THRU PER DRAWING
  5. ADHESIVE: PRESSURE SENSITIVE PERMANENT ACRYLIC
  6. OVERLAMINATE: 1 MIL CLEAR POLY LAMINATE
  7. ARTWORK PER APPROVED SAMPLE
  8. SERIAL NUMBER TO START WITH PREFIX OF 9 FOR REPLACEMENT REMOTES
  9. META FONT



QUALITY DOC		PCN	DATE
-	-	14-0178	2014AUG21
-	-	-	-
-	-	-	-

PROJ NO: 20836  
 FILE NO: 2014JUN16

REPLACEMENT REMOTE LABEL			
DR WTS CK	APP	MET	SC
-	-	-	2:1

CAT1A	SNAP-ON INCORPORATED KENOSHA, WI., USA
-	8-72737A-24