

AVONWOOD DEVELOPMENTS LTD  
EUREKA RFD 06/5557 ISSUE 4  
SER No

CTRL 1308

ON  
1 2 3 4 5 6 7 8  
DIP

ON  
1 2

457  
1000  
1000

CONN3

CONN1

J4  
0000000000

0000000000

CONN1  
1  
2  
3  
4  
5  
6  
7  
8  
9  
10  
11  
12  
13  
14  
15  
16  
17  
18  
19  
20  
21  
22  
23  
24  
25  
26  
27  
28  
29  
30  
31  
32  
33  
34  
35  
36  
37  
38  
39  
40  
41  
42  
43  
44  
45  
46  
47  
48  
49  
50

C9  
L4  
L5  
L6  
L7  
L8  
L9  
L10  
L11  
L12  
L13  
L14  
L15  
L16  
L17  
L18  
L19  
L20  
L21  
L22  
L23  
L24  
L25  
L26  
L27  
L28  
L29  
L30  
L31  
L32  
L33  
L34  
L35  
L36  
L37  
L38  
L39  
L40  
L41  
L42  
L43  
L44  
L45  
L46  
L47  
L48  
L49  
L50

C7  
C8  
C9  
C10  
C11  
C12  
C13  
C14  
C15  
C16  
C17  
C18  
C19  
C20  
C21  
C22  
C23  
C24  
C25  
C26  
C27  
C28  
C29  
C30  
C31  
C32  
C33  
C34  
C35  
C36  
C37  
C38  
C39  
C40  
C41  
C42  
C43  
C44  
C45  
C46  
C47  
C48  
C49  
C50

AMT2  
100004

L1  
L2  
L3  
L4  
L5  
L6  
L7  
L8  
L9  
L10  
L11  
L12  
L13  
L14  
L15  
L16  
L17  
L18  
L19  
L20  
L21  
L22  
L23  
L24  
L25  
L26  
L27  
L28  
L29  
L30  
L31  
L32  
L33  
L34  
L35  
L36  
L37  
L38  
L39  
L40  
L41  
L42  
L43  
L44  
L45  
L46  
L47  
L48  
L49  
L50

C1  
C2  
C3  
C4  
C5  
C6  
C7  
C8  
C9  
C10  
C11  
C12  
C13  
C14  
C15  
C16  
C17  
C18  
C19  
C20  
C21  
C22  
C23  
C24  
C25  
C26  
C27  
C28  
C29  
C30  
C31  
C32  
C33  
C34  
C35  
C36  
C37  
C38  
C39  
C40  
C41  
C42  
C43  
C44  
C45  
C46  
C47  
C48  
C49  
C50

XL2

C22

C23

C24

C25

C26

C27

C28

C29

C30

C31

C32

C33

C34

C35

C36

C37

C38

C39

C40

C41

C42

C43

C44

C45

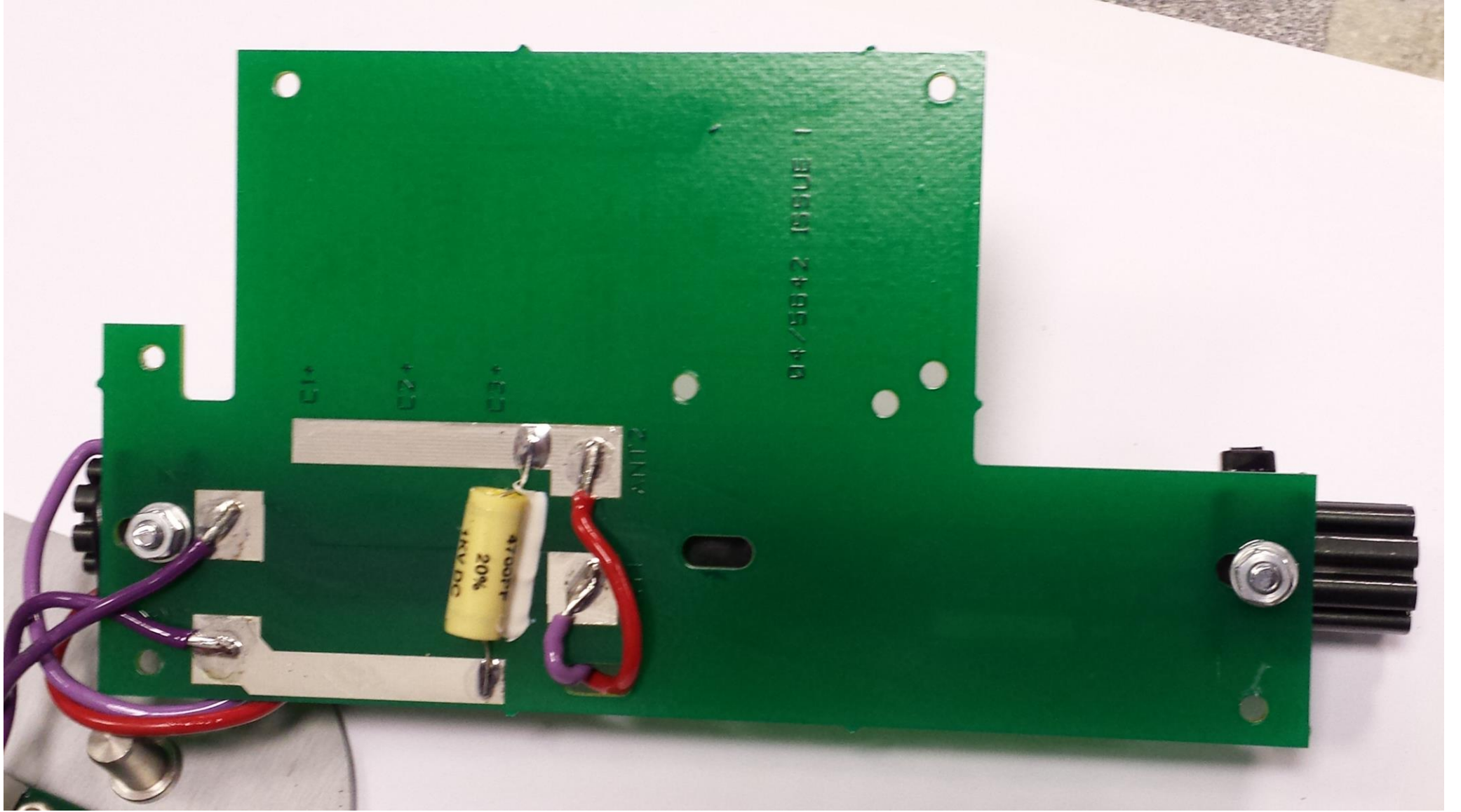
C46

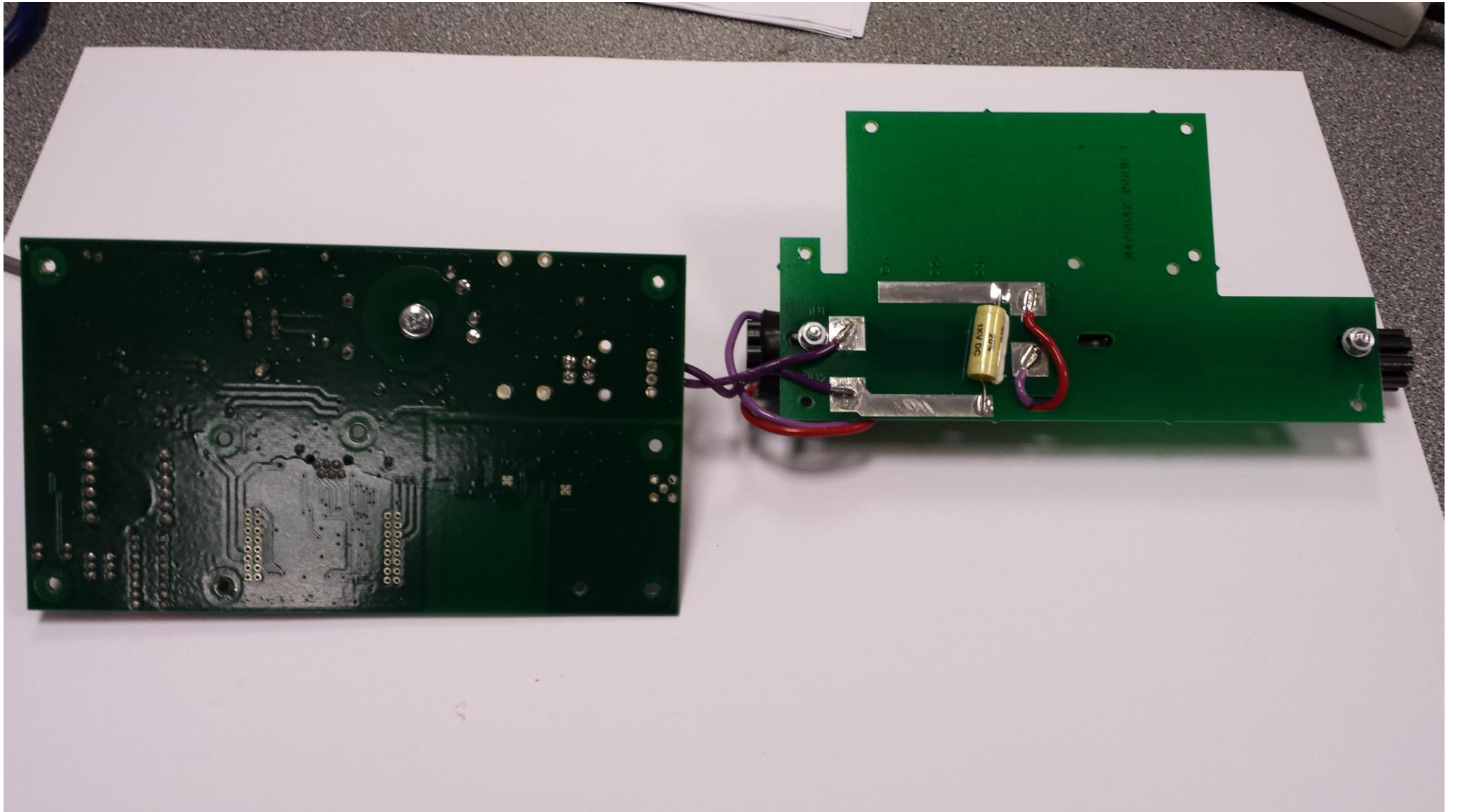
C47

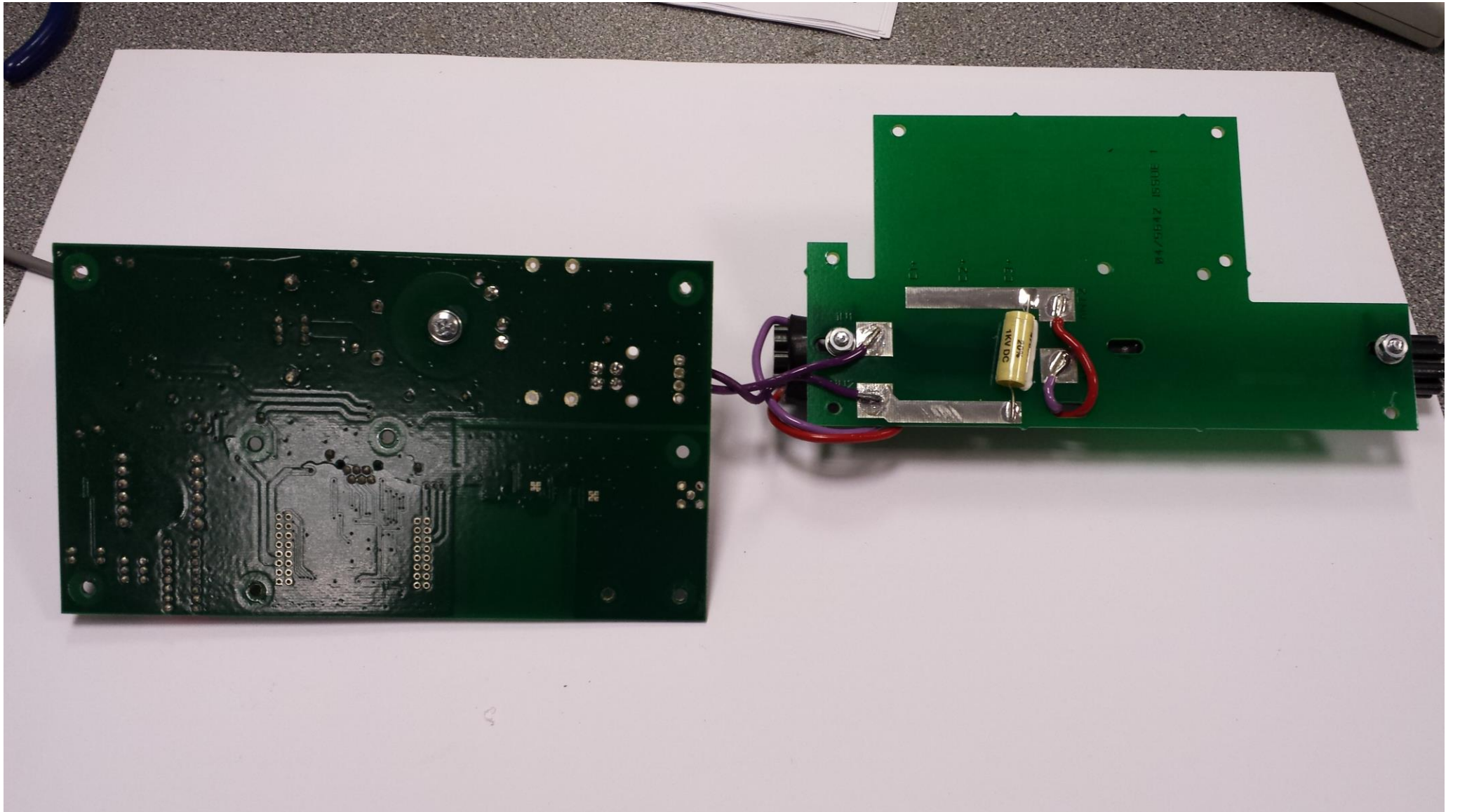
C48

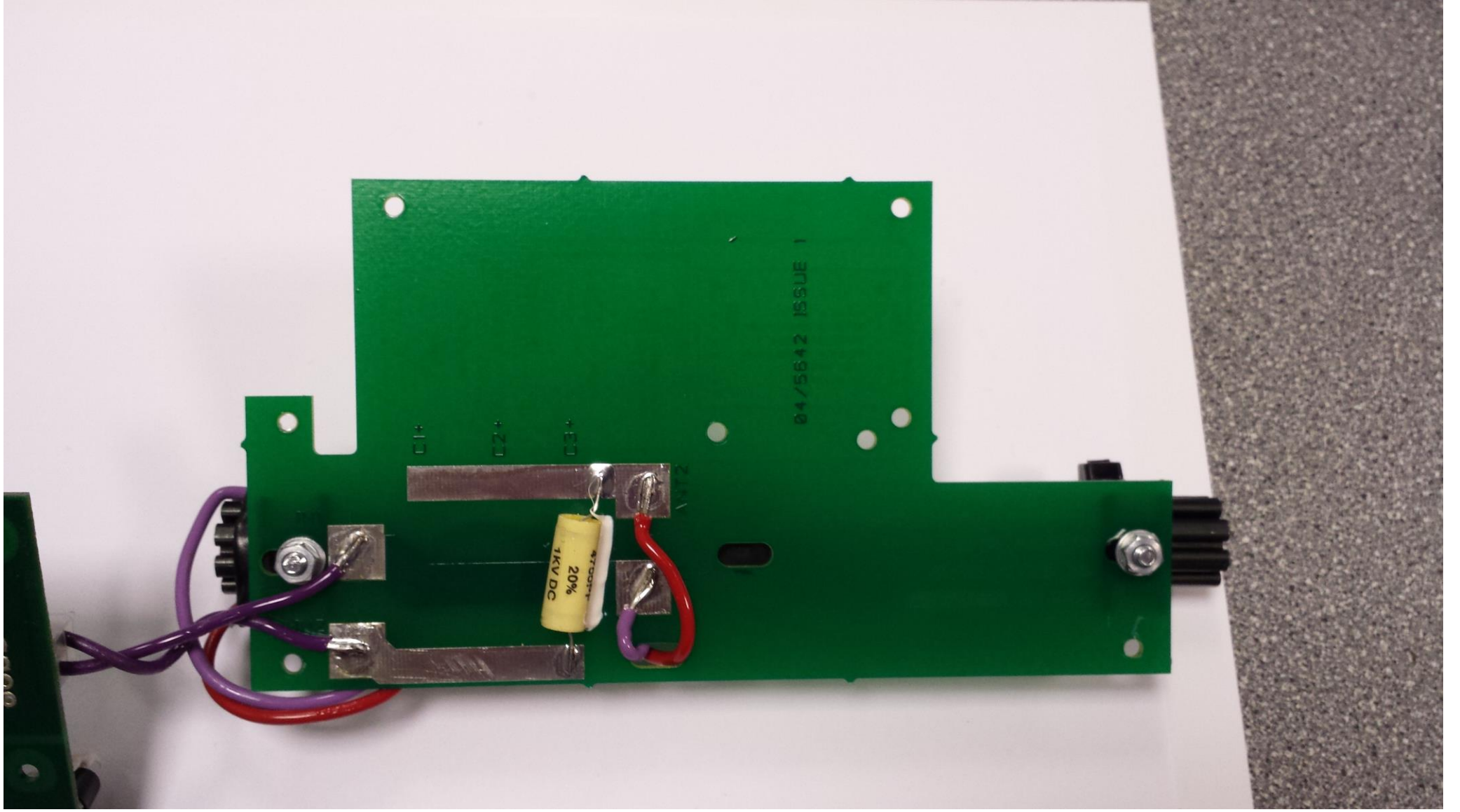
C49

C50





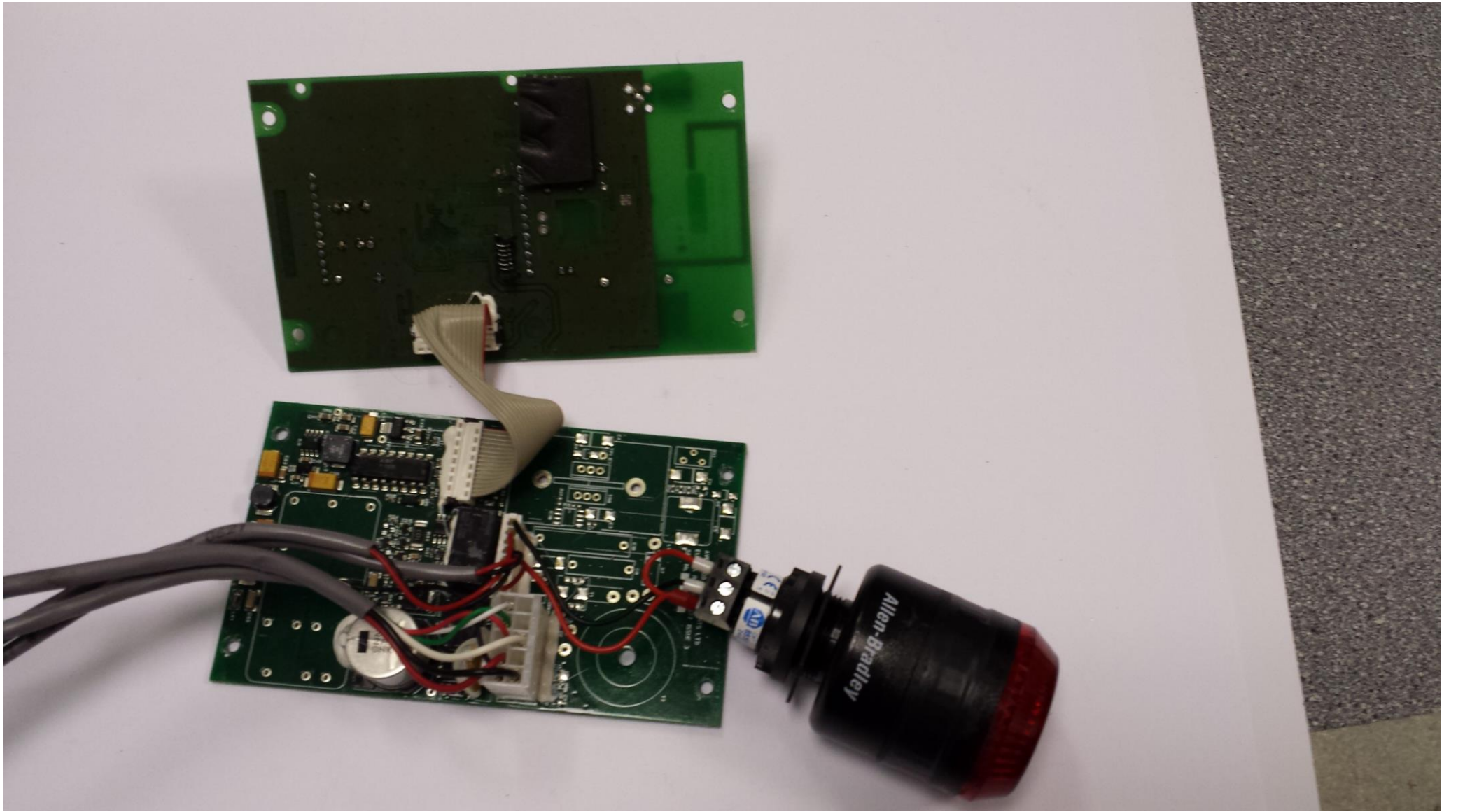




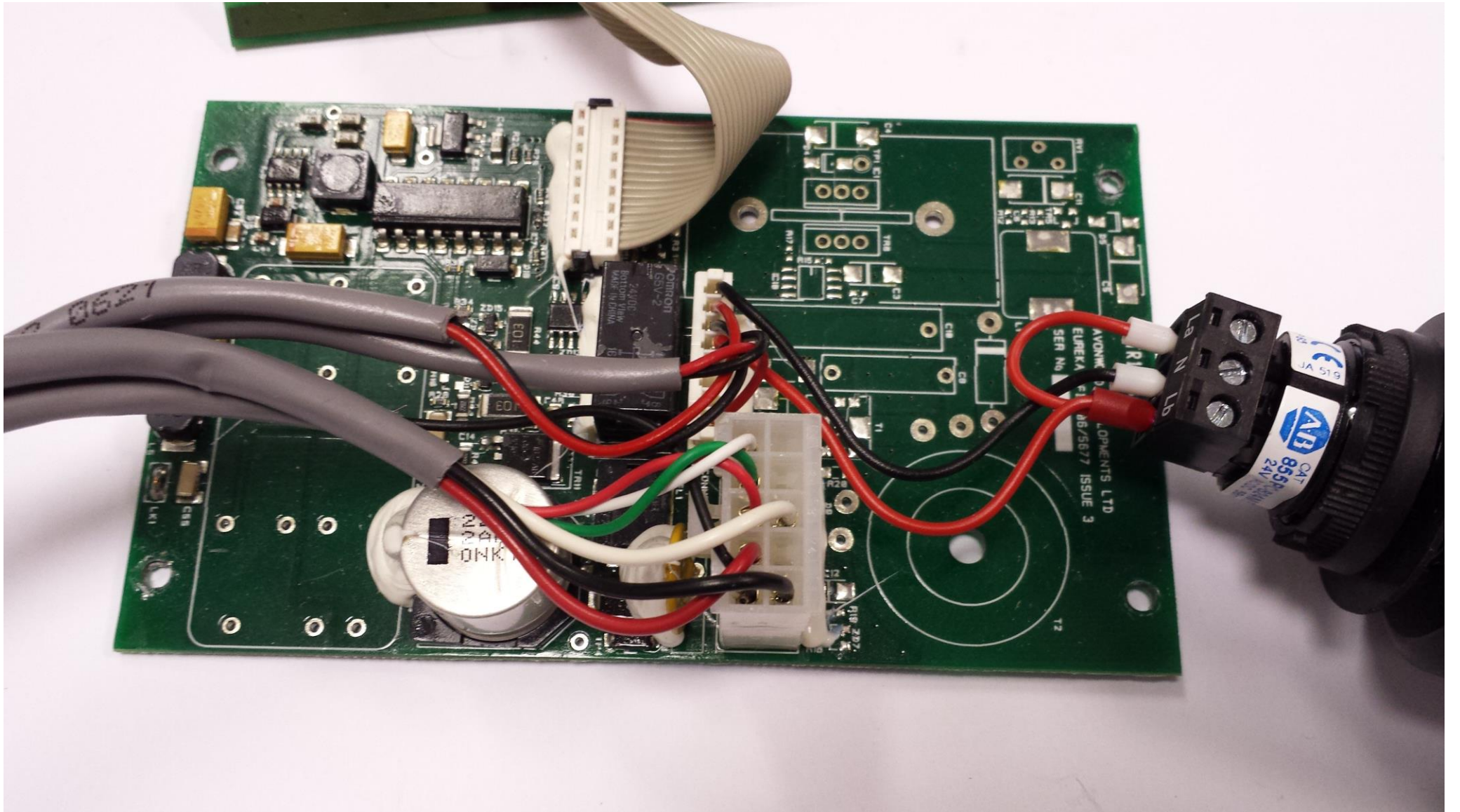
04/5642 ISSUE 1

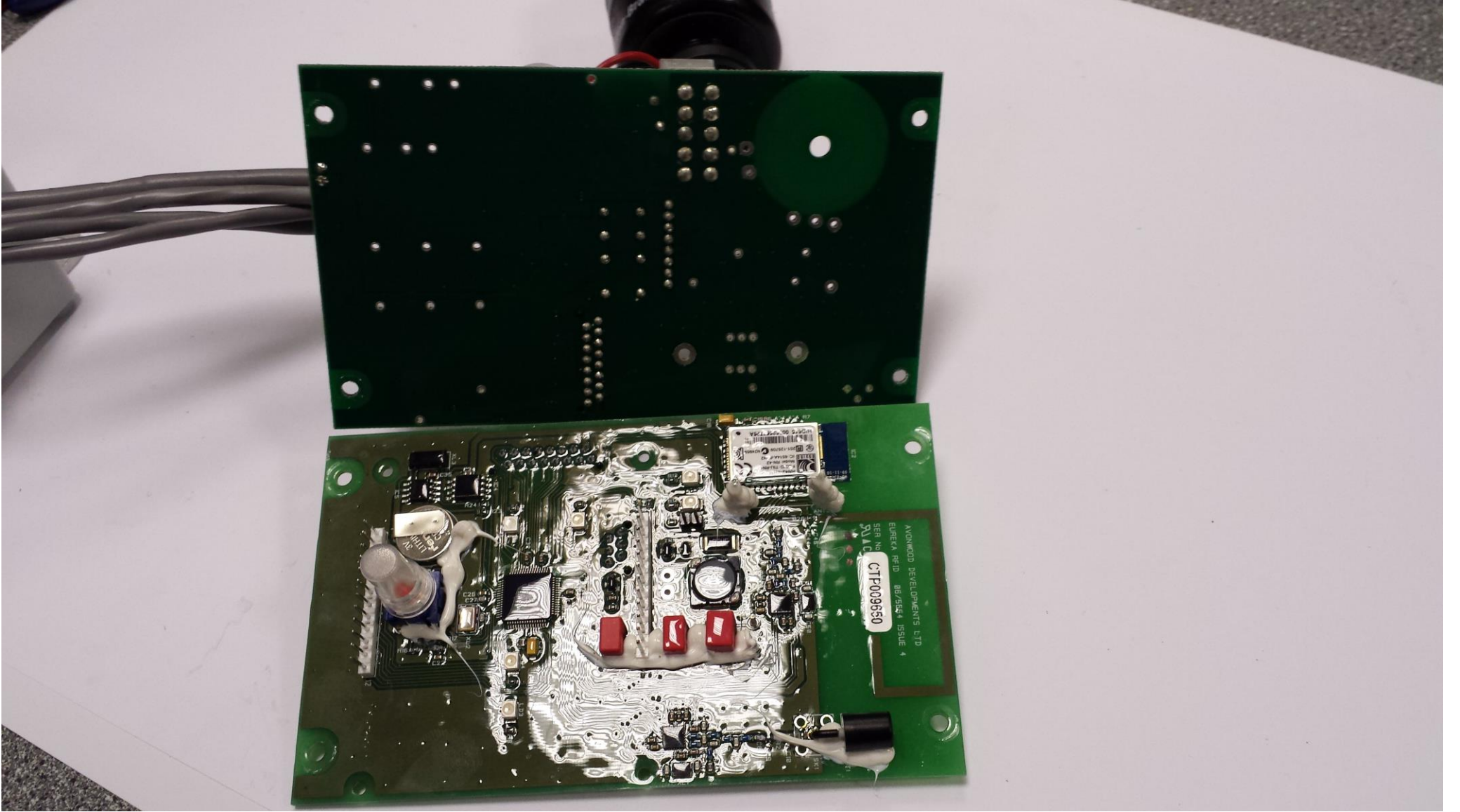
4700µF  
20%  
3KV DC

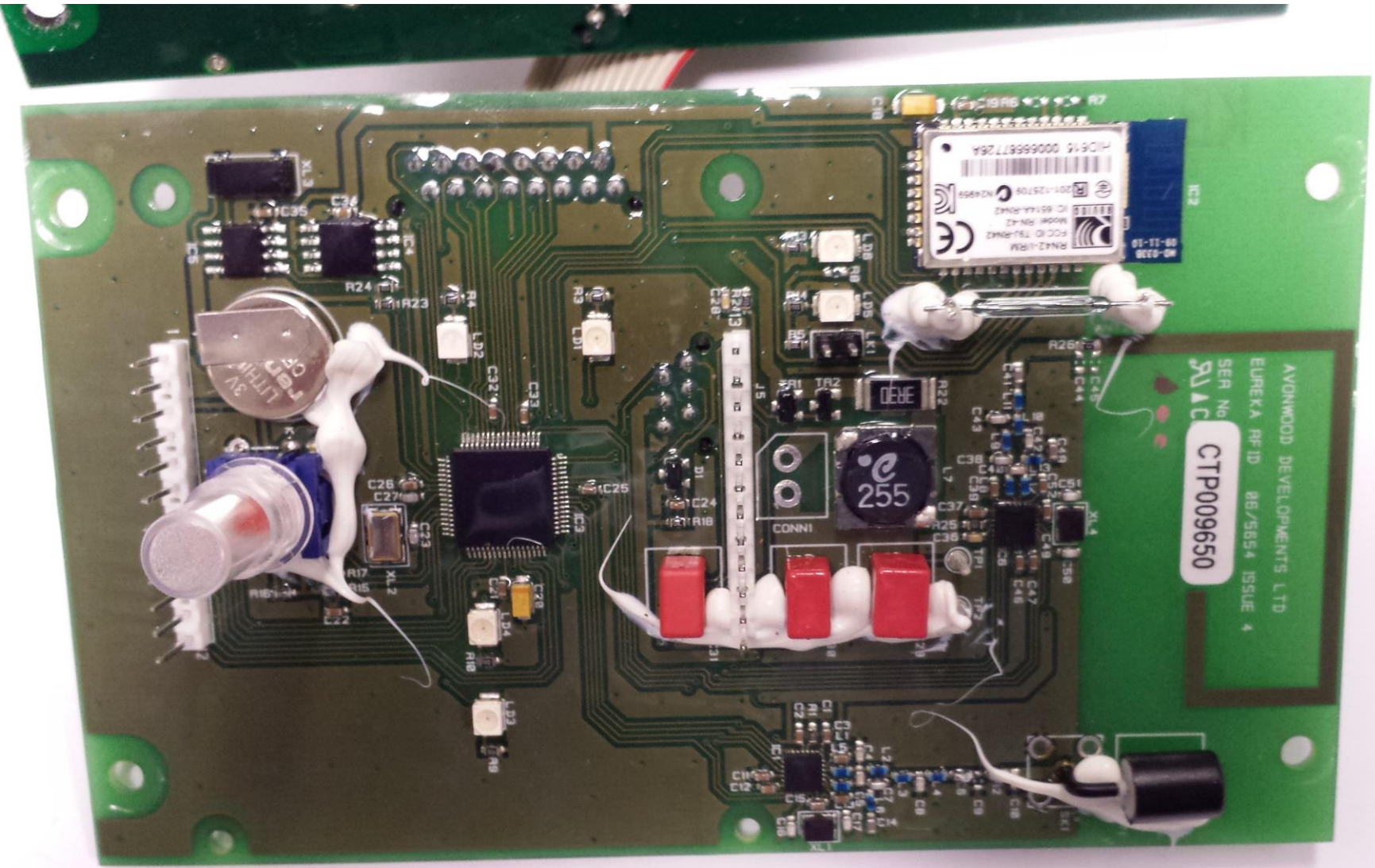
+E1  
+E2  
+E3











AVONWOOD DEVELOPMENTS LTD  
EUREKA REF ID: 86/5854 ISSUE 4  
SER No: 311C  
CTP009650

IC2  
86-0338  
08-11-19  
RN42-IRM  
FCC ID: T5U-RN42  
Model: RN42  
IC: 8514A-RN42  
201-125709  
NCA959  
HDS-16 00066687726A

255

LIT3V  
3V  
LITHIUM

