



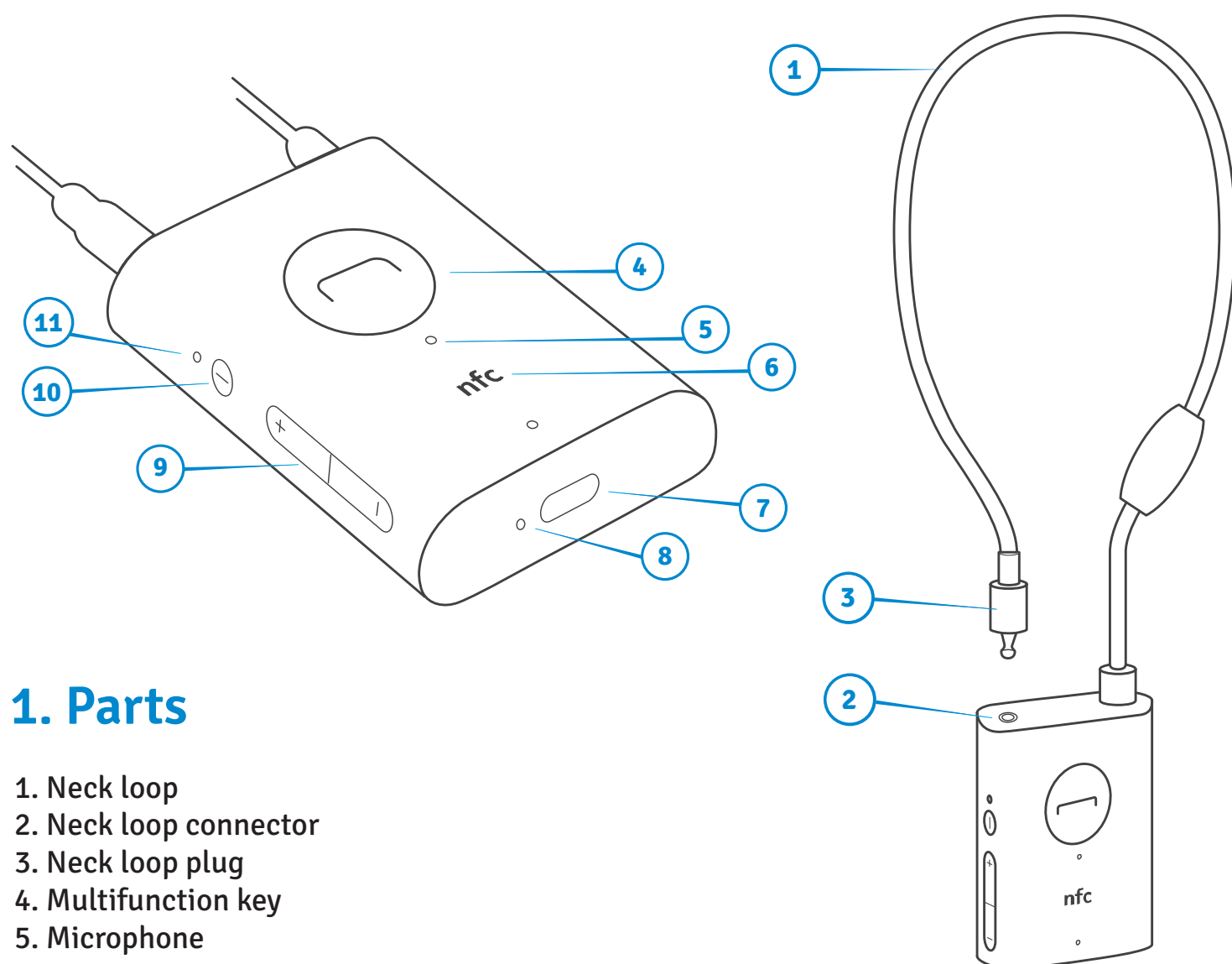
Jentafon Wireless Loopset LPS-6

User guide

User guide for Jentafon Wireless Loopset LPS-6

Jentafon Wireless Loopset LPS-6 is a Bluetooth headset for T-coil equipped hearing aid or cochlear implant users. The Loopset transmits sound from a Bluetooth compatible phone to the hearing aid or cochlear implant. The Loopset also has a microphone which picks up your speech and transmits it to the phone. You need a T-coil enabled hearing aid or cochlear implant in order to be able to use the Loopset. Most hearing aids and cochlear implants have integrated T-coil. Contact your hearing aid dispenser, if you need to verify whether your hearing aid has a T-coil.

The Loopset is a high quality electronic device and it should be handled with care. Familiarize yourself well with the guidance in the chapter 12.



1. Parts

1. Neck loop
2. Neck loop connector
3. Neck loop plug
4. Multifunction key
5. Microphone
6. NFC area
7. USB connector
8. Charging indicator light
9. Volume keys
10. Power key
11. Bluetooth connection indicator

2. Charge the Loopset

To charge the Loopset, plug in a compatible charger to the USB connector. You can use standard Micro-USB cable with type Micro-B plug with the Loopset. The charging indicator light turns on.

The color of the charging indicator light indicates the phase of charging. The color of the charging indicator light turns from red to yellow and to green while charging proceeds. When the charging indicator light switches off, the battery is fully charged.

The fully charged battery provides up to 12 hours of talk time and up to 300 hours of standby time. The charging indicator light shows the battery charge level whenever the Loopset is switched on or off. You can also check the battery status by pressing the power key shortly when the Loopset is on.

When the battery is almost completely discharged, the Loopset vibrates and beeps every 5 minutes and the charging indicator light continuously blinks red.

If you plan to store the Loopset for a long period, charge the battery before storing.

3. Pair the Loopset

The Loopset needs to be paired with a Bluetooth enabled mobile phone or another compatible Bluetooth audio source.

- Turn on the Loopset by pressing the power key briefly. When the Loopset is switched on, it vibrates shortly. If the Loopset has not been paired with any device, it enters into the pairing mode automatically. Otherwise, you can activate the pairing mode by pressing the multifunction key for about 5 seconds. The Bluetooth indicator light starts to blink quickly to indicate that the Loopset is in the pairing mode and visible to other devices.
- While the Loopset is in the pairing mode (the Bluetooth indicator light blinks quickly), activate the Bluetooth pairing procedure from your phone as instructed in the user guide of the phone. The Loopset identifies itself as LPS-6 during the pairing procedure. It might take a while before your phone finds the Loopset.
- If your phone requires a passcode, enter 0000.
- When the pairing is successful and the Bluetooth connection is established, the Bluetooth indicator light on the Loopset starts to blink slowly and the Loopset vibrates shortly.

If the Bluetooth connection is lost, the Bluetooth indicator light starts to double blink and the Loopset vibrates three times in a row every minute to notify you of the lost connection. You can try to re-establish the connection by moving back to the Bluetooth range, using the controls of your phone, or pressing the multifunction key for 2 seconds. If the Bluetooth connection is not restored within 10 minutes, the Loopset automatically switches off.

The Loopset remembers last eight devices it has been paired with.

4. Pair the Loopset with NFC

Near field communication (NFC) can be used to pair the Loopset with other compatible devices by putting them in contact with each other.

If NFC pairing does not work with your device, you can always use the method described in the chapter 3.

- Make sure that the Loopset is in the pairing mode. The Bluetooth indicator light blinks quickly.
- Tap the NFC areas of the Loopset and your phone together.
- If requested, accept the pairing on your phone.

After pairing, NFC can be used to disconnect and re-connect the Loopset and the phone by tapping the NFC areas together.

5. Wear the Loopset

The Loopset is designed to be worn around your neck.

- Open the neck loop by pulling out the neck loop plug, if necessary. Pull the plug directly outwards from the Loopset.
- Place the neck loop around your neck.
- Plug in the neck loop plug.

To remove the Loopset, open the neck loop by pulling out the neck loop plug from the neck loop connector. Notice that the detachable end of the neck loop cable can be easily recognized from the fixed end. The detachable plug is bigger than the strain relief at the fixed end of the cable.

6. Switch the Loopset on or off

Turn on the Loopset by pressing the power key briefly.

When the power is on, the Loopset vibrates briefly and establishes a Bluetooth connection with the nearby paired device. When the connection is established the Loopset vibrates again and the Bluetooth indicator light blinks slowly. You are now ready to make and receive calls with the Loopset.

The Loopset remembers up to eight devices it has been paired with. If it cannot establish a connection with the most recently used device when it is switched on, it tries to establish a connection with other paired devices automatically.

To switch the Loopset off, press the power key for 2 seconds.

When the Loopset is switched off, it vibrates twice and the Bluetooth connection indicator stops blinking.

7. Make or receive calls

Wear the Loopset around your neck. Make sure that the Loopset is connected to your phone (the Bluetooth indicator light blinks slowly) and your hearing aid is in T- or MT-mode.

To make a call, use the phone keys to dial a number. To redial the last called number, press the multifunction key twice. To end a call, press the multifunction key once during a call.

To answer an incoming call, press the multifunction key. To reject an incoming call, press the multifunction key twice.

If the Loopset is switched off and you want to use it to answer an incoming call, switch it on. The Loopset connects to a phone last used and it answers the incoming call automatically.

Press the volume keys to adjust the volume during a call.

You can also use the phone keys for all call handling.

8. Listen to music or other audio transmissions via Bluetooth connection

You can listen to music and other audio on your phone or another compatible device with a Bluetooth connection. When the Loopset is connected to the device, start playing the audio using the controls of the device. In this mode, both the device and the Loopset volume controls may be used to adjust the volume level.

9. Use USB audio connection

You can connect the Loopset to a compatible device with a USB cable. The USB connector in the Loopset is compatible with a standard Micro-USB type Micro-B connector. For example, you can use the USB connection to make internet calls or listen to music with a computer. The battery of the Loopset is charged during USB audio connection, if the connected device supplies enough power.

If both Bluetooth and USB audio connections are active simultaneously, the Bluetooth audio takes precedence.

The volume keys of the Loopset cannot be used while using USB audio. Use the controls of the connected device to adjust the volume.

10. Clear settings and reset

To clear all pairings and restore the default factory settings, press and hold the multifunction key for more than 8 seconds. The charging status indicator blinks twice between green and red. The Loopset enters into the pairing mode as all pairings have been cleared.

To reset the Loopset, press and hold the multifunction key while connecting the Loopset to a charger. Resetting does not clear the settings.

11. Troubleshooting

If you cannot connect the Loopset to your device, make sure that the Loopset is charged (see chapter 2), switched on (chapter 6), and paired with the device (chapter 3). Make also sure that the Loopset is within 10 meters (33 feet) of the device you are trying to connect it with and that there are no obstacles between the Loopset and the device. Make also sure that the Bluetooth feature is enabled in your device.

If you still have trouble with connecting, delete Loopset pairing from your device, reset the Loopset, and clear the settings (see chapter 10). Then follow instructions in chapter 3 to pair the Loopset again with your device.

While using your hearing aid in T-coil mode, it sometimes picks up noise from electromagnetic disturbances from your surroundings. If you experience such noise, try to move to a different location. You can also lower the volume in your hearing aid and increase the volume of the Loopset to minimize the effect of the noise.

If the sound quality decreases during a call or when listening to some other audio transmission, make sure that there are no obstacles between the Loopset and the device. Try to move your device closer to the Loopset.

If the Loopset behaves oddly or incorrectly, try to reset the Loopset and restore the factory default settings (chapter 10).

12. Product and safety information

When using the Loopset, take care of your hearing. Do not listen to an audio transmission for prolonged periods at high volume levels.

Obey all local laws when using the Loopset while driving. Keep your hands free and focus on road safety.

Do not use the Loopset in areas where mobile phone use is prohibited or when it may cause interference or danger. Do not use the Loopset near explosives, fuel or any other flammable material.

The Loopset is a high quality electronic device, handle it with care. Take good care of the Loopset by following the instructions below.

- Keep the Loopset dry.
- Protect the Loopset from dust and dirt.
- Store and use the Loopset in normal room temperature. High and cold temperatures and sudden temperature changes might harm the Loopset.
- Handle the Loopset gently.
- Clean the Loopset with a soft, dry cloth when necessary.

The Loopset should be serviced only at an authorized service center. It does not contain any user serviceable parts. Do not open the Loopset. Unauthorized service or modifications may damage the Loopset and violate regulations governing radio devices.

The Loopset has an internal, non-removable, rechargeable battery. Do not attempt to remove the battery as you will damage the Loopset while doing so.

Keep the Loopset between 15°C and 25°C (59°F and 77°F). Extreme temperatures decrease the battery capacity and reduce the lifetime of the battery. The Loopset may not work in extreme temperatures.

Do not modify or damage the battery in the Loopset in any way. Do not drop, disassemble, puncture, or penetrate the Loopset or the battery. Keep the Loopset away from fire and never expose the Loopset to temperatures over 60°C (140°F). Do not charge the battery or use the Loopset in hot temperatures or near fire. Do not immerse the Loopset or the battery in any liquid. Do not put the Loopset in a microwave oven. Do not leave the Loopset in a car during hot weather.

If the battery leaks, do not let liquid touch skin or eyes. If this happens, immediately flush the affected area with water and seek medical help. In extreme temperatures the battery may expand and vent. Do not inhale any venting gas or smoke. If this happens, leave the area immediately and seek medical attention.

If you suspect that the battery or the charger is damaged or the battery is swollen, take the Loopset to a service center before using it.

13. Recycling

At the end of the working life of the Loopset, recycle it properly. Do not throw it into household waste.



The crossed-out wheeled-bin symbol on the Loopset reminds you that the Loopset is in the scope of the European Union Waste Electrical and Electronic Equipment (WEEE) directive and it should be recycled properly at the end of its working life. In order to get information about your nearest recycling point, contact your local waste authority or us at www.jentafon.com.

14. Declaration of Conformity

CE 0560

Jentafon Oy declares that this product is in compliance with the essential requirements and other relevant provisions of Directive 1999/5/EC. A copy of the Declaration of Conformity can be found at www.jentafon.com/declaration/ in English language.

15. FCC Notice

This device complies with part 15 of the FCC Rules. Operation is subject to the following two conditions: (1) This device may not cause harmful interference, and (2) this device must accept any interference received, including interference that may cause undesired operation. Any changes or modifications not expressly approved by the party responsible for compliance could void the user's authority to operate this equipment.

This equipment has been tested and found to comply with the limits for a Class B digital device, pursuant to part 15 of the FCC Rules. These limits are designed to provide reasonable protection against harmful interference in a residential installation. This equipment generates, uses and can radiate radio frequency energy and, if not installed and used in accordance with the instructions, may cause harmful interference to radio communications. However, there is no guarantee that interference will not occur in a particular installation. If this equipment does cause harmful interference to radio or television reception, which can be determined by turning the equipment off and on, the user is encouraged to try to correct the interference by one or more of the following measures:

- Reorient or relocate the receiving antenna.
- Increase the separation between the equipment and receiver.
- Connect the equipment into an outlet on a circuit different from that to which the receiver is connected.
- Consult the dealer or an experienced radio/TV technician for help.

Note: FCC Radiation Exposure Statement: This equipment complies with FCC radiation exposure limits set forth for an uncontrolled environment. This transmitter must not be co-located or operating in conjunction with any other antenna or transmitter.

16. Other notices

The Bluetooth® word mark and logos are registered trademarks owned by Bluetooth SIG, Inc. and any use of such marks by Jentafon Oy is under license. Other trademarks and trade names are those of their respective owners.

Jentafon reserves the right to change this document and the product described in it.