

ENGLISH



mophie **space pack**

made for iPad mini

Space App compatible with iOS7 or later



mophie

user manual

Welcome

04

Installing your space pack

07

Charging your space pack

07

Taking Care of your space pack

09

Using the Space App

10

Storing Files in your space pack

11

Playing and Viewing Stored Files

18

Taking Photos and Videos 27

Favorites/Sharing Files 29

Other Home Screen Items 32

File Types by Collection 35

Warranty 36

Warning/Legal 36

FAQ 41

Welcome

Thank you for purchasing the mophie space pack. space pack gives you everyday protection, enough power to go all day and enough storage for all your stuff, all the time. Leave no file behind.

Package Contains

- mophie space pack
- Micro USB Cable
- Pass-through Headphone Adapter

Features

Your mophie space pack's 16GB or 32GB of extra storage gives you room to store thousands of extra photos, thousands of extra songs and hours more video in addition to what's already on your iPad. Its lithium-polymer battery extends the battery life of your iPad for hours with up to twice as much power to rock, talk, surf and send, all while providing a comfortable ergonomic design with the complete protection of a hard-shell case.

Here are just some of the reasons why your space pack is so fantastic:

- space pack provides 16GB or 32GB of extra storage space. So go ahead and back up the photos from your iPad, take new photos or load movies, music or documents from your

computer directly into your space pack – how you use it is up to you.

- The free Space App automatically organizes all the files stored in your space pack into different collections according to their file types. Individual collection buttons provide a quick and easy way to access all your stuff.
- The Space App has built-in video and music players and a photo viewer that make it easy to enjoy all of the media you've stored in your space pack's extra space.
- Use the Space App to instantly share your stored files almost any way you can think of: Facebook, Twitter, text, e-mail and more.
- (Take a breath) Ergonomic, form-fitting, fully protective ultra-impact-resistant case-and-battery-in-one for iPad.
- An integrated standby switch allows you to charge your iPad (green) whenever it needs it. However, in standby mode (red), you still have the full protection of a case.
- The included pass-through headphone adapter allows you to use any style headphones while your iPad is in the space pack.
- Track battery power at a glance with the integrated four-light LED status indicator. You can keep tabs on charging status and current battery life. Know before you go!

- The included micro USB cable allows you to charge and sync your iPad while refilling your space pack at the same time. (Really, you'll never need to remove the space pack from your phone.)
- Rechargeable for over 500 full cycles. Our case is built to last, letting you do more, longer.
- Smart battery technology actually instructs the iPad to drain power out of the space pack first. When your space pack's battery is empty, you can still have a fully-charged iPad.
- The space pack offers complete protection from top to bottom. No more choosing between protection and power.
- Built-in short circuit, over-charge, and temperature protection, letting you charge with confidence. Safety First!

Compatibility

space pack is designed and intended solely for the Apple iPad mini. Please do not attempt to use it with any other device.

Installing your space pack

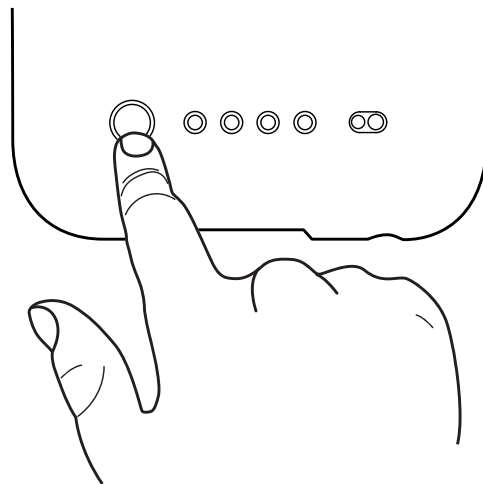
Important: You must have the mophie Space App installed on your iPad before you can use your space pack's 16GB or 32GB storage. The app is compatible with iOS7 and newer operating systems and is available for free at the App Store. Go ahead and install it now; we'll wait.

Charging your space pack

Your space pack comes charged and ready to go. When it does need charging, use the supplied micro USB cable to connect it to your computer or any power source with a USB out, like the USB wall adaptor included with your iPad. Normal charging should take only two or three hours for maximum power.

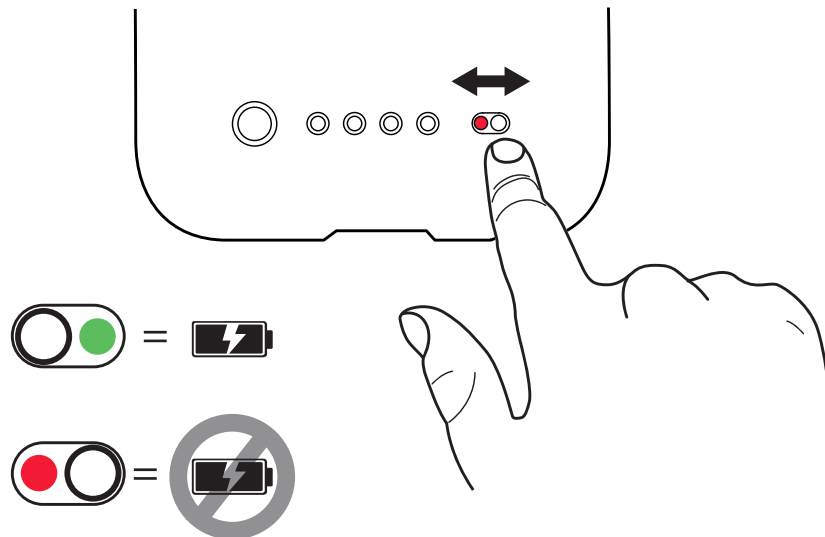
Checking your space pack's charging status

Press your space pack's status button and the status LEDs will indicate its charge level. Four LEDs means that the space pack is fully charged, while one LED means that it's almost empty. Know before you go.



Charging your iPad using your space pack

To charge your iPad from your space pack, slide the space pack's standby switch so the green indicator is visible.



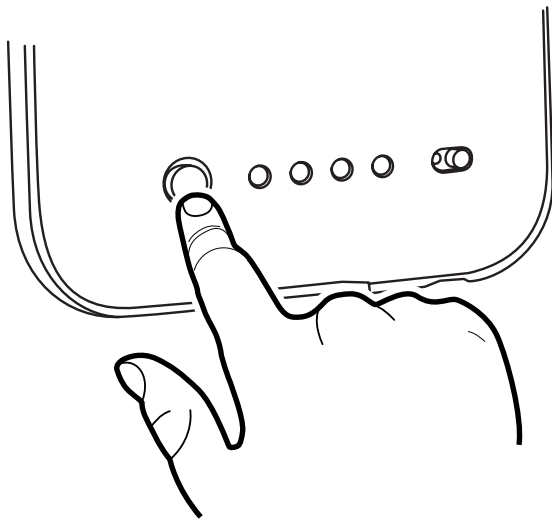
Taking care of your space pack:

- Keep your space pack dry and away from moisture and corrosive materials.
- Do not clean your space pack with harsh chemicals, soaps or detergents. Just wipe the case with a soft, water-dampened cloth. Wipe the pins gently with a soft, dry cloth.
- Recharge your space pack once every three months when not in use. If you plan on putting it away, charge it for one hour first.

Using the Space App

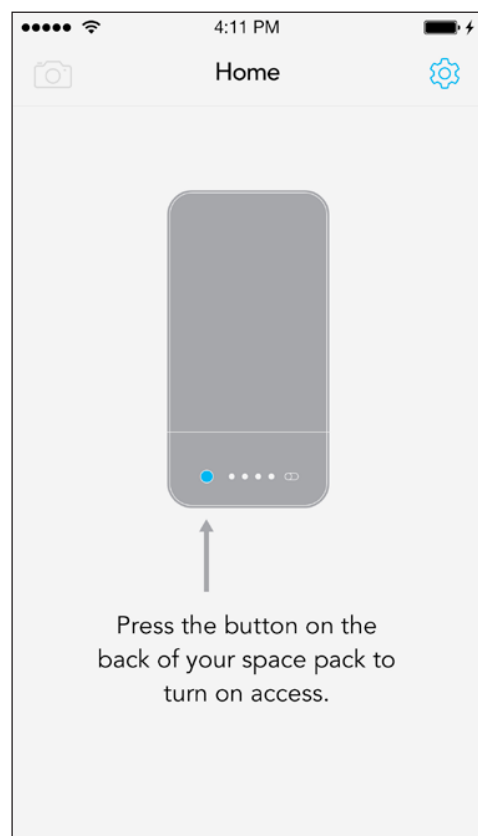
The Space App gives you control of your space pack's photo and video viewers, music and movie players and storage functions, so you can do more with all your stuff.

IMPORTANT: Before you can use the Space App you must first press the status button on the back of space pack to allow the app to access the space pack's storage.



A "Press the button..." message will appear on the app screen if you launch the app before pressing the status button.

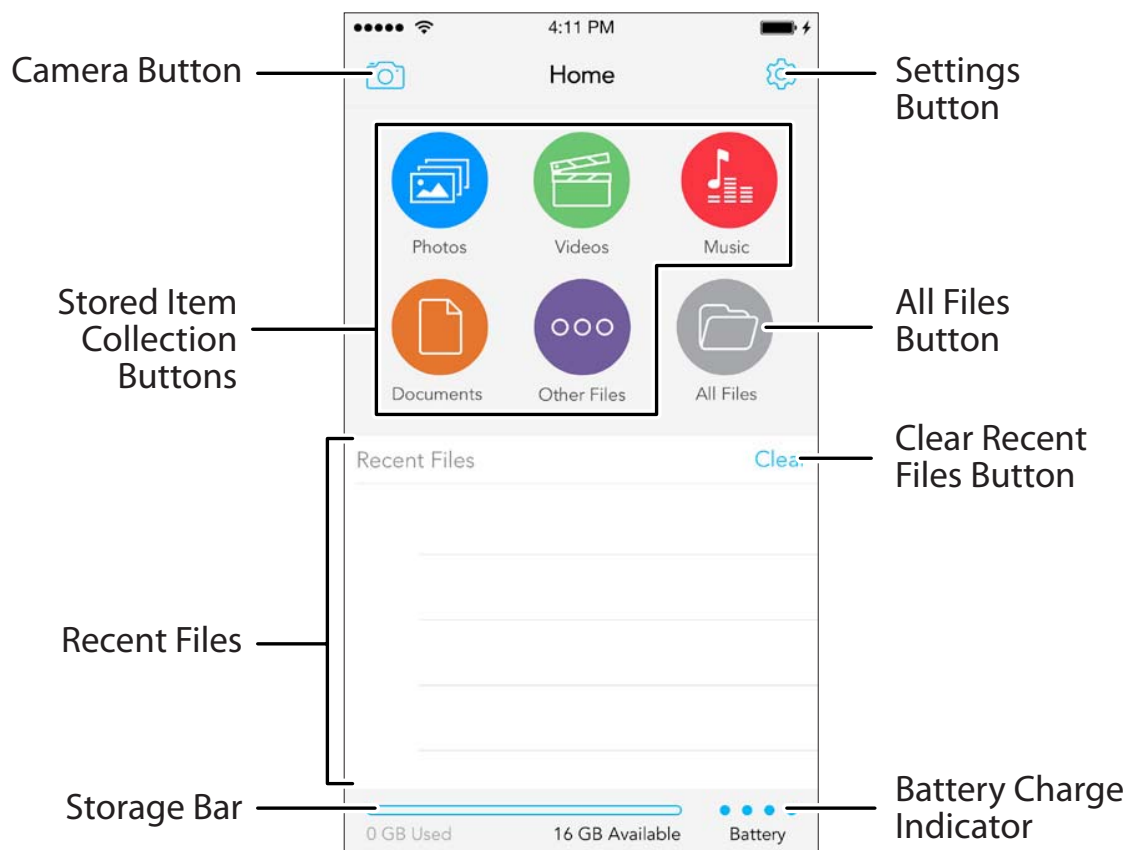
See [Settings: Sleep Mode](#), on page 33, for more information.



Note: The app screens that appear in this user guide may differ slightly in appearance from those in the actual Space App.

Storing Files in your space pack

When you first launch the Space App the Home screen will appear. The Home screen automatically organizes all the files stored in your space pack into different collections according to their file types, giving you a quick and easy way to access all your stuff.



Note: After you transfer files into your space pack, the Space App will perform a scan and assign the new files into collections (see [Playing and Viewing Stored Files](#), on page 18). The space pack may load photos, music and videos a bit more slowly until the scan is complete.

The Home screen also contains an All Files button, which lets you access and organize all of the files stored in your space pack. See [Managing files in space pack](#), on page 16, for more information about the All Files button.

Importing files into space pack from your computer

You can import files into your space pack from your computer the same way you would import them into a USB flash drive. You can import any type of file from your computer into your space pack, but each individual file must be 4GB or smaller in size.

The iPad does not need to be inserted in the space pack while you're importing files from the computer, but both sections of the space pack must be assembled together.

To import files:

1. Use the supplied micro USB cable to connect the space pack to a USB port on your computer. A "Connected" screen will appear on the iPad if it is inserted in the space pack and the Space App is running.
2. Use the computer's file directory to move the desired files/folders from your computer into space pack. (space pack will appear in the computer's file directory as "SPACE PACK".)

3. You can also import attachments from emails you have saved in your iPad (press and hold on an attachment; choose “Open in...” and select “Space App”) and items via 3rd-party apps on your iPad (tap “Share” on an item; tap “Open In...” and select “Space App”).

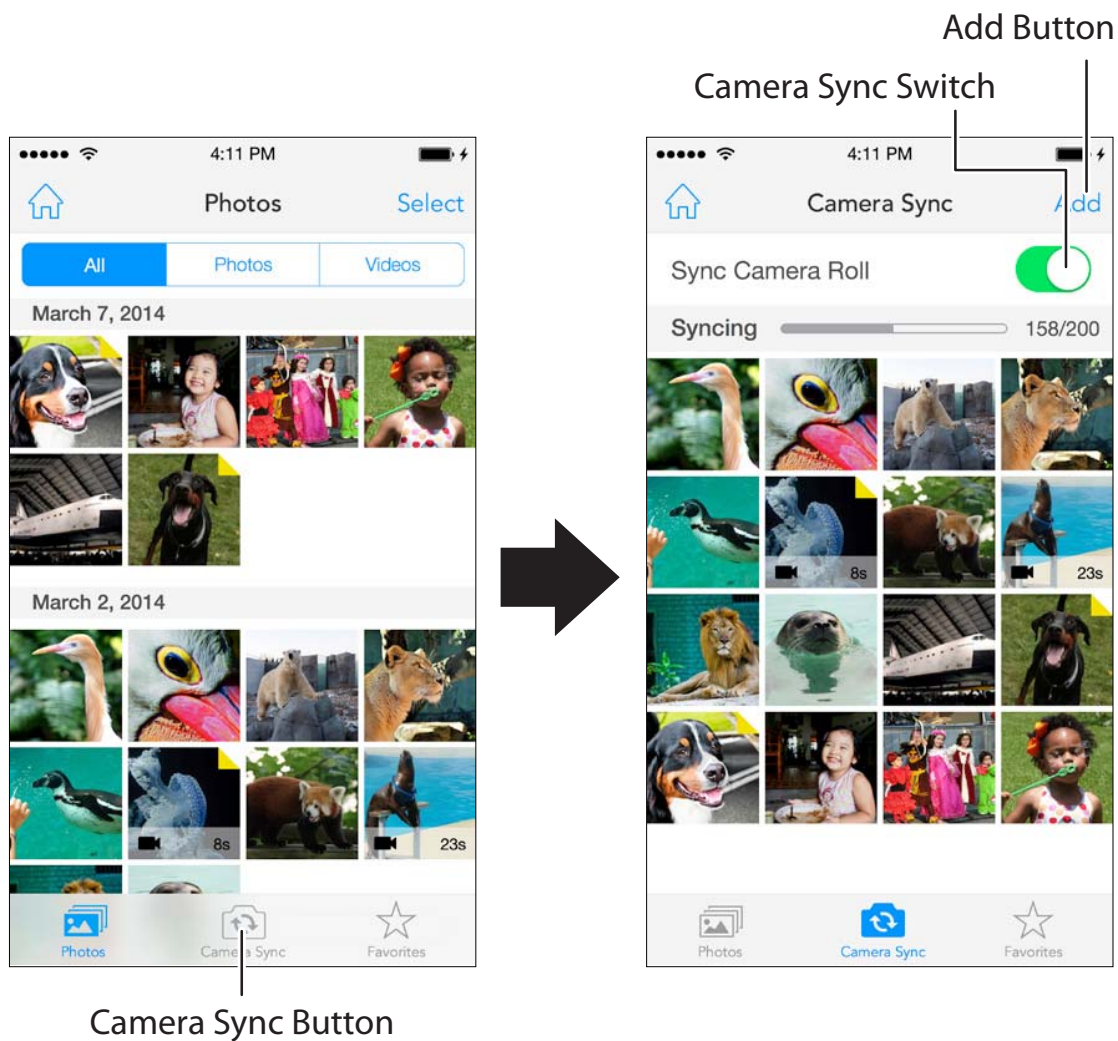
Note: You cannot access the Space App while the space pack is connected to your computer.

After they are imported, files and folders will be listed in the Space App under the same names they had in your computer. (Music file names are determined by their metadata, and may not match their filenames.)

Importing photos and videos into your space pack from your iPad

You can import the following items from your iPad into your space pack: Photos and videos you took with the iPad camera, email attachments and items via 3rd-party apps.

To import photos and videos, tap the “Photos” collection button on the Home screen; when the Photos screen appears, tap the “Camera Sync” button in the bottom menu bar. The “Add” button and “Camera Sync” switch will appear, giving you two ways you can import photos and videos into your space pack:



To manually import photos and videos:

1. Tap the Add button.
2. Select an iPad camera roll.
3. Select each photo or video you want to import into your space pack.
4. Tap the "Sync" button that appears when you select files.

The selected files will be imported into the space pack.

To automatically import new photos and videos:

Slide the Camera Sync switch to the right (green). space pack will import all photos and videos from the iPad that have not already been imported.

If you leave the Camera Sync switch set to green, every time you launch the Space App it will automatically import any new photos and videos you have saved in your iPad since the last time you imported photos and videos. Note: You cannot manually import photos and videos when the Camera Sync switch is set to green.

The first time you import photos or videos, space pack will automatically create a folder named "DCIM" containing a sub-folder named "0000SYNC," where all imported photos and videos will be stored. You can move the photos and videos into other folders (see [Managing files in space pack](#), on page 16.)

IMPORTANT: Your space pack does not automatically delete the original photos and videos from your iPad after it imports them. If you manually delete the original photos and videos from your iPad, your space pack increases the amount of storage space available on your iPad for other files. If you leave the original photos and videos on your iPad, your space pack acts like a back-up drive for them.

Backing-up your space pack

As with any device that stores important files, you should regularly back up the contents of your space pack to another device (typically your computer). This will allow you to restore your space pack in the unlikely event that something happens to your stored items.

Backing up your space pack is easy:

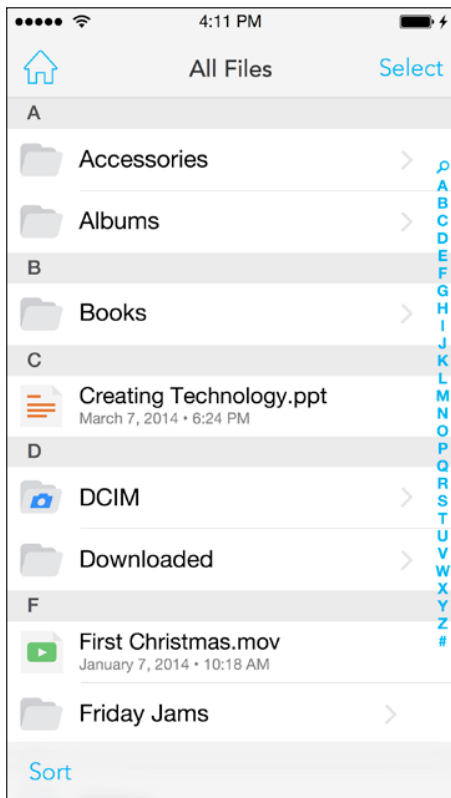
1. Use the supplied micro-USB cable to connect your space pack to your computer. (It will show up as a removable drive named "SPACE PACK.")
2. Copy the files into a folder on your computer the same as you would transfer from a thumb drive. (We suggest naming the folder "space pack Backup," or similar.)

We suggest backing-up your space pack every time you transfer files into it from the iPad or from a computer.

Managing files in space pack

Once you have files stored in your space pack you can use the All Files screen to set up your own file management system by creating folders and moving files between folders. Tap the All Files button on the Home screen to display the All Files screen.

The All Files screen can display files sorted by name, file size, file type or the date the file was last modified. Tap the Sort button in the bottom menu bar to change the sort criteria.

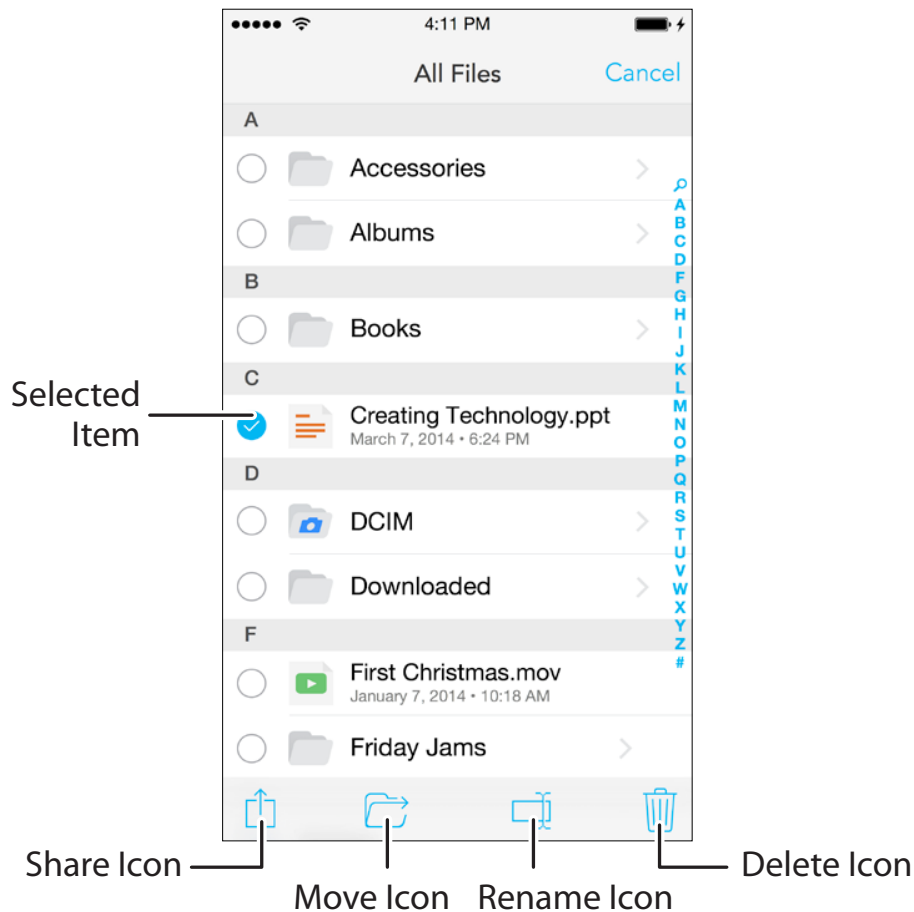


To create a new folder:

1. Tap "Select," then tap the New Folder icon that appears at the bottom of the screen.
2. When the keypad appears, use it to type a folder name and then tap "Create."

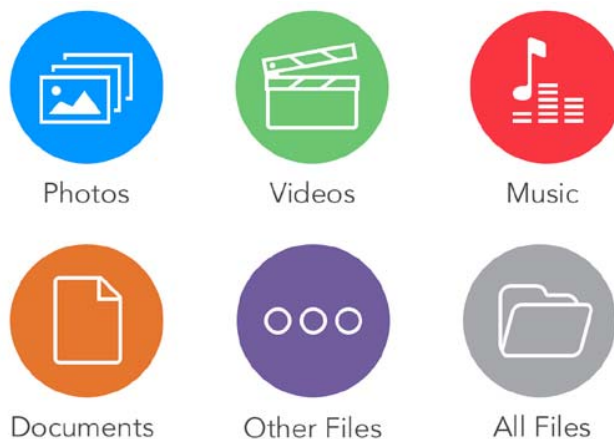
To move, share, rename or delete an item:

1. Tap "Select" on the All Files screen, and then select any number of files (check-marks will appear next to the selected files). After you select at least one file the move, share, rename and delete icons will appear in the bottom menu bar.
2. Tap the desired icon and follow the screen prompts to perform the action. (For details about sharing files, see [Sharing Files](#), on page 31.) Note: "Rename" only becomes available if you select a single item.



Playing and Viewing Stored Files

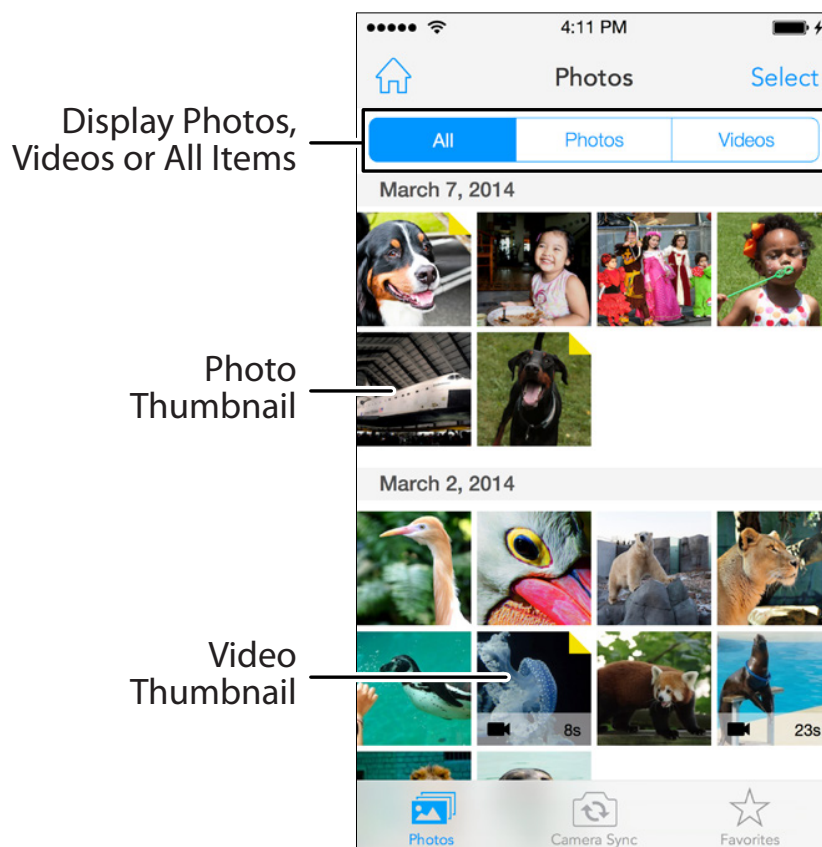
To make it quick and easy to do more with your stuff, your space pack automatically sorts all the files you store in it into the following collections: Photos (photos and iPad videos), Videos, Music, Documents and Other Files.

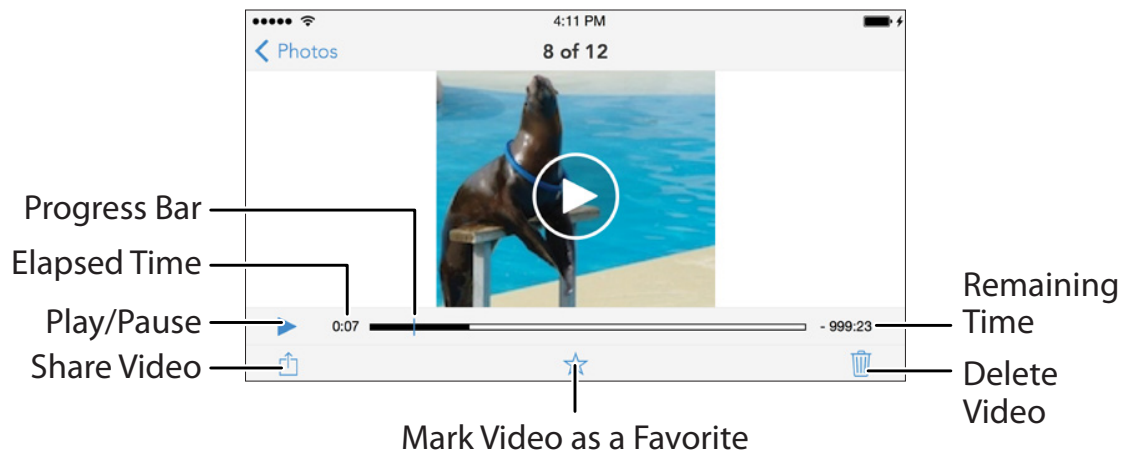


Files are automatically categorized according to their file types. (See [File Types by Collection](#), on page 35, for a complete list of file types by collection.) Tap a collection button to display thumbnails or a list of all stored files in that collection.

Viewing photos and videos

Tap the Photos button to open the viewer and display thumbnails of all pictures stored on your space pack and all videos shot with the iPad camera that are stored on your space pack, sorted by their date tags. Tap the buttons at the top of the screen to display thumbnails of photos, videos or both. Note: Thumbnails may take a moment to load.

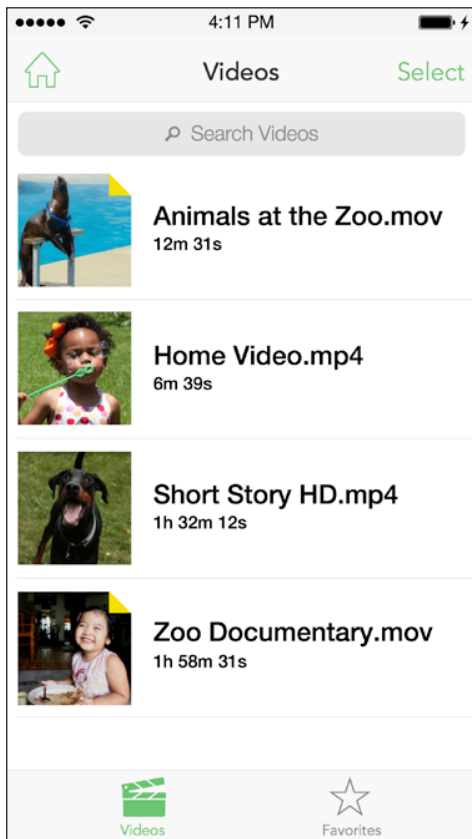




Tapping a thumbnail will display the photo or launch the Photos video player and play the video.

Note: The Photos Video Player works in both landscape and portrait orientations.

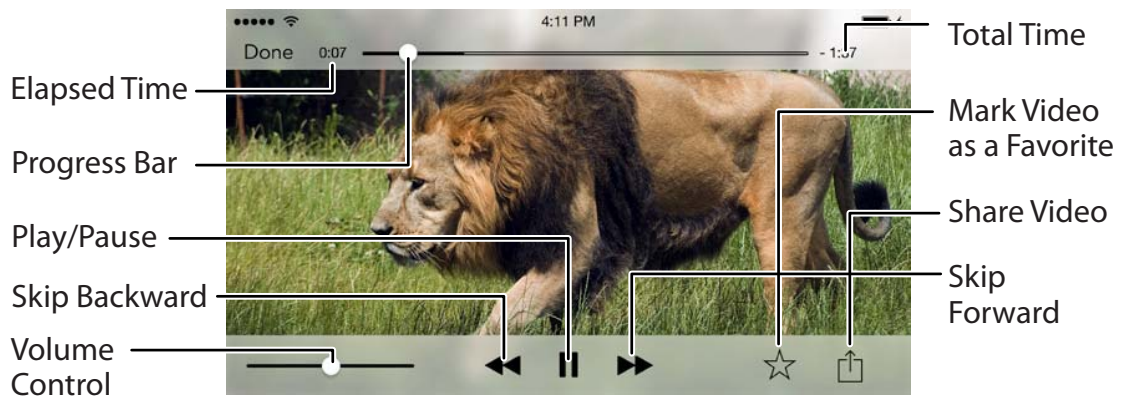
Tap the Select button on the thumbnail screen to reveal the bottom menu bar, containing share, favorite and delete icons. Select any number of files (check-marks will appear on the selected thumbnails), then tap the desired icon and follow the screen prompts to perform the action. (For details about sharing files, see [Sharing Files](#), on page 31.)



Playing videos

Tap the Videos button on the Home screen to open the video list and display thumbnails of all video files that are stored on your space pack, sorted by their date tags.

Tap a thumbnail to launch the video player and play the video. (The Video Player works in both landscape and portrait orientations.)



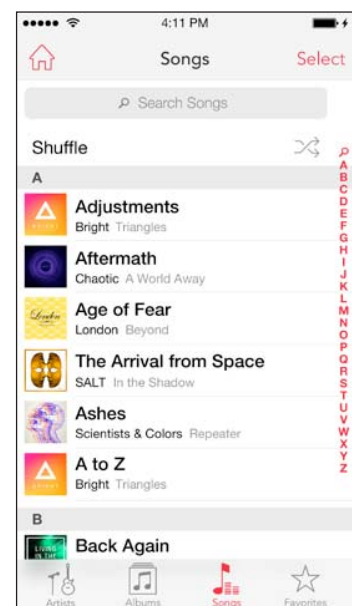
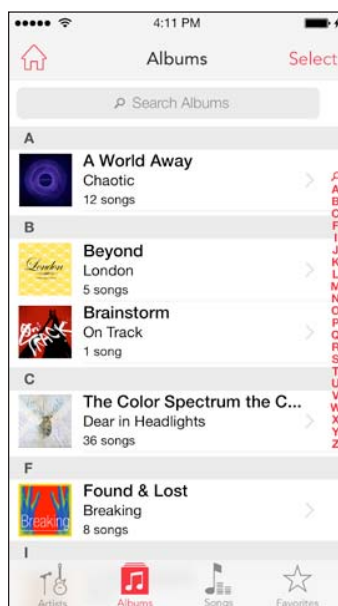
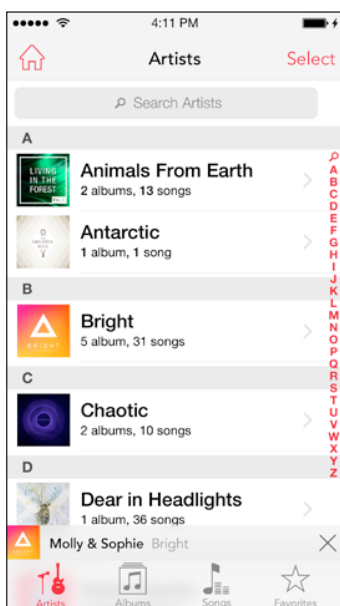
Note: The space pack cannot open movies you purchased through iTunes. Use iTunes to transfer the movie into your iPad and watch it using the iPad's viewer.

Tap the Select button on the thumbnail screen to reveal the bottom menu bar, containing share,

favorite, rename and delete icons. Select any number of files (check-marks will appear on the selected thumbnails), then tap the desired icon and follow the screen prompts to perform the action. (For details about sharing files, see [Sharing Files](#), on page 31.) You can also access these functions by swiping a video thumbnail in the video collection screen. Note: “Rename” only becomes available if you select a single item.

Playing music

Tap the Music button on the Home screen to open the Music list, which displays all the music files stored on your space pack, sorted by artist, album or song title. Tap the Artists, Albums and Songs buttons in the bottom menu bar to change the sort criteria.



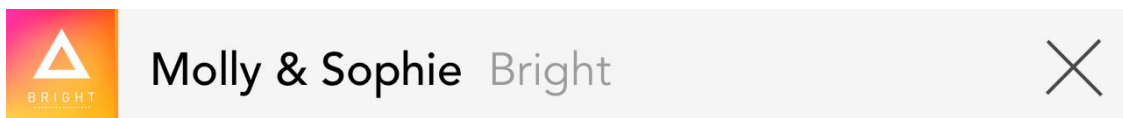
- ***In Artists view:*** Tap an artist to display all albums by that artist in alphabetical order, by title. Tap a song to play the album through from that song to the end.
- ***In Albums view:*** Tap an album to display its songs; tap a song to play the album through from that song to the end.
- ***In Songs view:*** Tap a song to play all stored songs in alphabetical order, starting with the selected song and ending with the last song in the alphabetical list.

No matter how you selected it, when a song begins playing the Now Playing screen will appear.



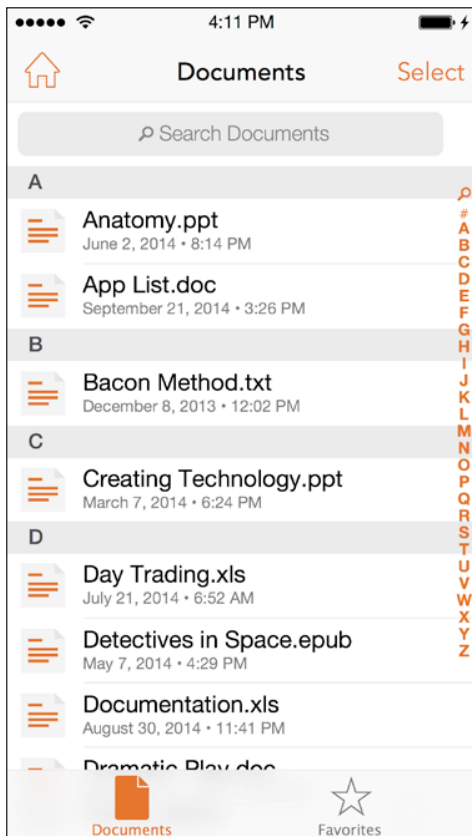
Tap the "Done" button to dismiss the Now Playing screen and return to the previous (Albums, Artists, or Songs) screen.

A status bar will appear at the bottom of the screen, displaying the title and artist of the currently playing song.



Tap the song title/artist name to return to the Now Playing screen; tap the "X" to stop playing the song and dismiss the status bar.

Tap the Select button to reveal the bottom menu bar, containing the share, favorite (available only in Song view) and delete icons. Select any number of files (check-marks will appear next to the selected file names), then tap the desired icon and follow the screen prompts to perform the action. (For details about sharing files, see [Sharing Files](#), on page 31.) You can also access these functions by swiping a file in one of the music collection screens.



Viewing documents

Tap the Documents button on the Home screen to display a list of all document files (text, spreadsheet, etc.) stored in your space pack, sorted alphabetically.

Tap an item to display it. (Note: To be displayed, the document's file format must be supported by the iPad.

If the iPad cannot display the item, you may be able to

display it with a 3rd-party app you installed: Select the item, tap the Share button, tap "Open In..." and select the app from the list that appears.)

Tap the Select button to reveal the bottom menu bar, containing the share, favorite, rename and delete icons. Select any number of files (check-marks will appear next to the selected file names), then tap the desired icon and follow the screen prompts to perform the action. (For details about sharing files, see [Sharing Files](#), on page 31.) You can also access these functions by swiping a document thumbnail in the document collection screen. Note: "Rename" only becomes available if you select a single item.

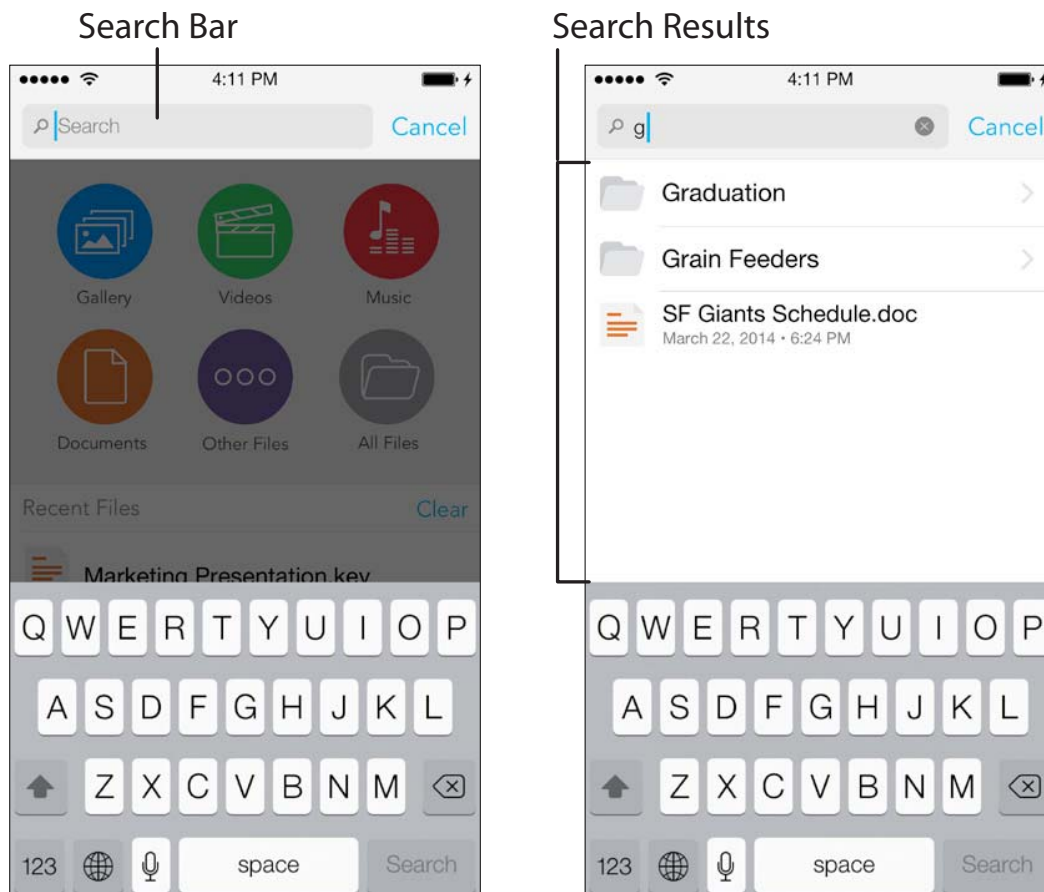
Other files

Tapping the “Other” button displays a list of all files that don’t fall into the above four collections, sorted by the dates they were imported into the space pack. Tap an item to display it. (Note: To be displayed, the item’s file format must be supported by an app installed on the iPad.)

Tap the Select button to reveal the bottom menu bar, containing share, favorite, rename and delete icons. Select any number of files, (check-marks will appear next to the selected file names), then tap the desired icon and follow the screen prompts to perform the action. (For details about sharing files, see [Sharing Files](#), on page 31.) You can also access these functions by swiping a file thumbnail in the Other Files collection screen. Note: “Rename” only becomes available if you select a single item.

Searching for files

Pull down on the Home screen, the All Files screen, or any collection screen to reveal the Search bar. Tap the bar to display the Search screen, where you can search for files and folders by keyword.



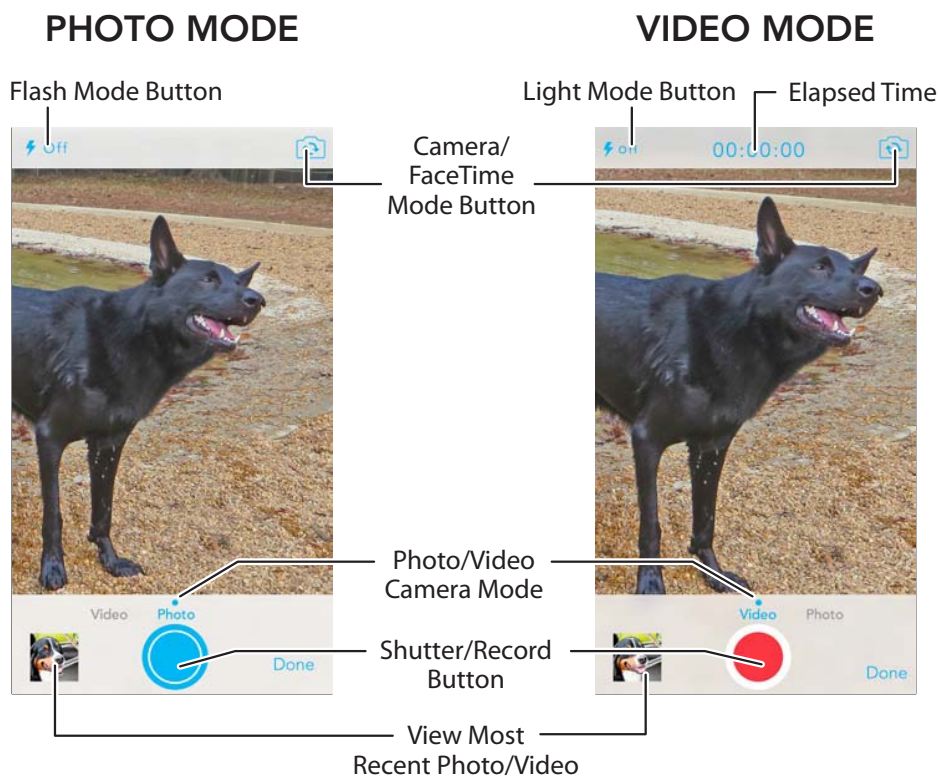
Enter your keyword and tap “Search.” Your keyword appears in the Search bar and the search results are listed below it.

Tap a search result item to display it. (Tapping a folder displays its contents; tap a content item to display it.)

Taking Photos and Videos

The Space App camera function lets you take photos and videos with the iPad camera that will be saved directly into the space pack’s storage, preserving space in your iPad. (You don’t need to import the photos into the space pack after you take them.)

Tap the Camera button on the Home screen to activate the Space App camera control screen.



When you take photos or videos using the Space App camera function they will be stored only in the space pack's "DCIM" folder, not in your iPad. You can move photos and videos from your space pack to your iPad by selecting the items and tapping the Share icon, then tapping "Save Image." You can also move photos and videos into other folders within the space pack (see [Managing files in space pack](#), on page 16).

Favorites/Sharing Files

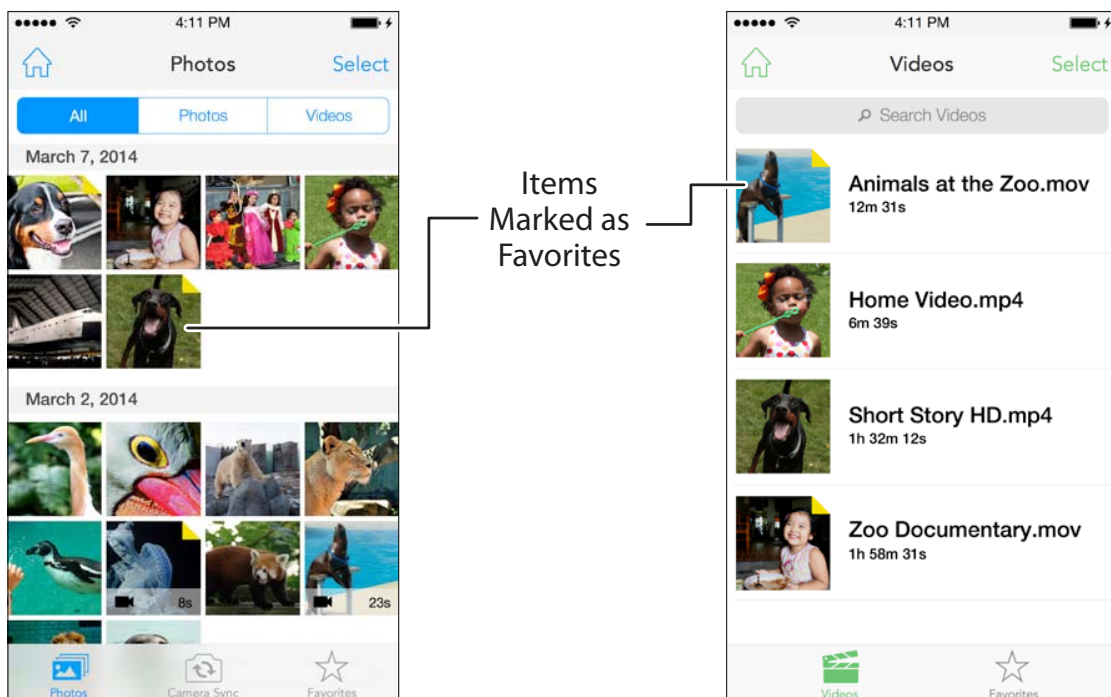
Favorites

You can mark any item you are viewing or listening to as a Favorite, for easy recall at any time.



To mark an item as a Favorite, tap the star icon that appears on the bottom menu bar while you're viewing or playing the item.

Thumbnails and icons of files that you marked as Favorites will have an indicator in the upper-right corner.



Your space pack keeps a separate Favorites list for each item collection (photos, music, etc.).

To display the collection's Favorites list, tap the Favorites icon that appears in the bottom menu bar of the collection's viewer screen.



Tap the Select button on any Favorites list screen to reveal the bottom menu bar, containing share and delete icons. Select any number of files, (checkmarks will appear on or next to the selected file names), then tap the desired icon and follow the screen prompts to perform the action. (For details about sharing files, see [Sharing Files](#), on page 31.)

To remove an item from the Favorites list, tap the star icon while viewing or listening to the item. The star will change from solid to outline, indicating that the item is no longer marked as a Favorite. Note: Tapping the 'Delete' button will delete the item from the space pack, not delete it from the Favorites list.

Sharing Files

At any time you can share up to 100 items stored in your space pack totaling up to 100MB via:

- Social media, such as, Facebook, Twitter
- The Cloud, such as, Google Drive, Dropbox
- Direct contact, such as, email, text message

Note: You must have already established your Facebook, Twitter, Dropbox or Google Drive account.

To share an item:

1. On the Home screen, tap the collection of the item(s) you want to share.
2. The list screen for that collection will appear. Tap the Select button.
3. Select the item(s) you wish to share. A checkmark will appear next to the name of each item you select.
4. Tap the Share icon on the bottom menu bar. The sharing screen will appear.
5. Tap the icon for the way you want to share the item and follow the screen prompts.

Note: You can also share any item you are viewing or listening to by tapping the Share icon that appears in the bottom menu bar when the item is open.

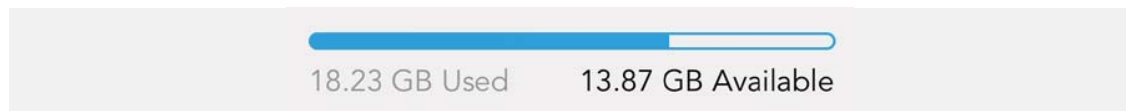
Other Home Screen Items

Recent Files

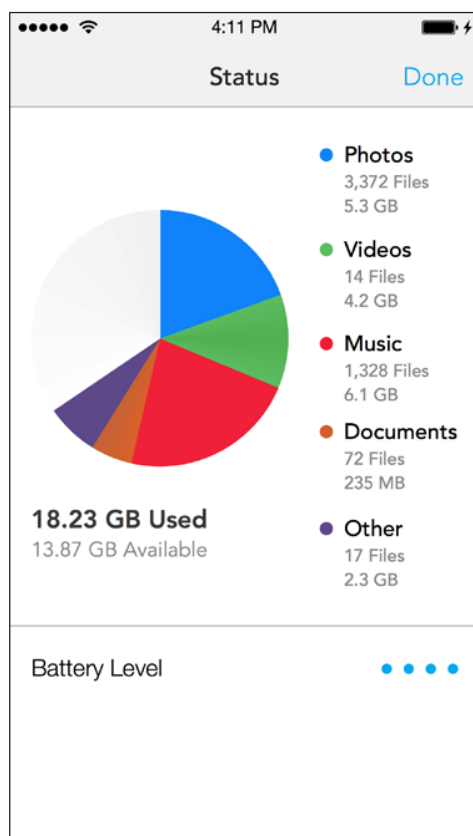
Your last 10 viewed or played files are displayed in this section of the Home screen for easy recall. Tap an item to display it. Tap “Cancel” to delete all the listed files and refresh the list.

Storage bar

The Home screen’s Storage bar indicates how much of space pack’s storage is being used.



Tap anywhere on the bottom menu bar to display the Status screen, which presents the storage information in more detail.



The colors represent the amount of space occupied by each item type:

● = Photos

● = Videos

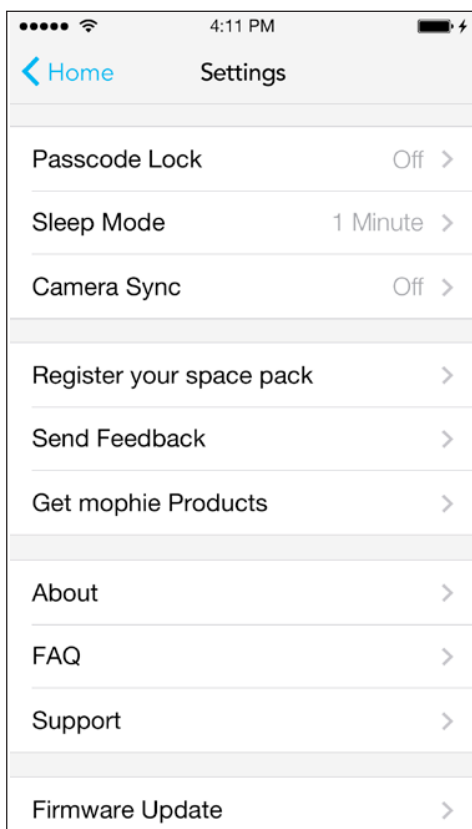
● = Music

● = Documents

● = Other files

Battery charge indicator

The battery charge indicator's four dots indicate the same as the LED charge status indicators on the back of the space pack case: Four dots means that the space pack's battery is fully charged; three dots means it's mostly charged; two dots means it's partly charged and one dot means that it's almost empty.



Settings

Tap the gear icon on the Home screen to display the space pack's Settings screen.

Sleep Mode: Whenever the Space App is running, the space pack's electronics must be 'awake,' drawing power from the space pack battery. After you launch the app, it will continue

to run in the background even after you minimize it and switch to a different app. To conserve the space pack's battery power, the Sleep Mode will automatically shut off the space pack's electronics and quit the Space App after the app has been inactive for 1, 2, 5 or 10 minutes (including when running in the background).

Camera Sync: This provides another way to set the Camera Sync switch. If you leave it set to on (green), every time you launch the Space App it will automatically import any new photos and videos you have saved in your iPad since the last time you imported photos.

Register Product: Tap this to register your space pack.

Send Feedback: Tap this to send an email request to mophie for help with your space pack.

mophie Products: Tap this to go to mophie.com.

About: Tap this for information about the Space App.

Support: Tap this to connect to mophie's on-line support page.

Firmware Update: Tap this to see if your space pack has the latest firmware version. If it doesn't, follow the prompts to install the latest version.

Reset: Tapping this presents two options:

- **Clear Local Cache:** This option removes all data from the local cache.
- **Factory Reset:** This option deletes all of your content from your space pack and restores it to its factory-shipped condition.

File Types by Collection

The Space App's Home screen will automatically categorize the following file types into collections:

Photos Collection

bmp, cmx, cod, con, cur, gif, ief, jfif, jpe, jpeg, jpg, mov, pbm, pgm, pnm, ppm, ras, rgb, svg, xbm, xpm, xwd

Videos Collection

3gp, asf, asr, asx, avi, lsf, lsx, m4v, movie, mp2, mp4, mpa, mpe, mpeg, mpg, mpv2, qt

Music Collection

aif, aifc, aiff, au, caf, m3u, mid, mp3, ra, ram, rmi, snd, wav

Documents Collection

323, bas, c, cpp, css, doc, docx, etx, h, htc, htm, html, htt, key, m, mm, numbers, pages, pdf, pps, ppsx, ppt, pptx, rtf, rtx, sct, stm, tsv, txt, uls, vcf, xls, xlsx

The Space App will categorize all file types not listed above as "Other Files."

Warranty

At mophie, we are dedicated to making the best quality products we can. To back this up, your mophie space pack is warranted for 1 full year from the date of purchase. This warranty does not affect any statutory rights that you may be entitled to.

Keep a copy of your purchase receipt as proof of purchase. Be sure to register your product at mophie.com. Failure to register your product and/or provide proof of purchase may void the warranty.

Customer Service

Telephone: 1-888-8mophie

International: +1 (269) 743-1340

Web: www.mophie.com/cs

Service Hours: 9am to 6pm M-F EST









Warning/Legal

Warning

Read all instructions and warnings prior to using this product. Improper use of this product may result in product damage, excess heat, toxic fumes, fire or explosion, for which damages you ("Purchaser"), and not mophie, LLC ("Manufacturer") are responsible.

- ☠ Do not store battery in high temperature environment, including heat caused by intense sunlight. Do not place battery in fire or other

excessively hot environments.

-  Be cautious of excessive drops, bumps, abrasions, or other impacts to this battery. If there is any damage to the battery such as dents, punctures, tears, deformities, or corrosion due to any cause, discontinue use. Contact Manufacturer or dispose of it in an appropriate manner at your local battery-recycling center.
-  Do not disassemble this battery or attempt to re-purpose or modify it in any manner.
-  Do not expose this battery to moisture or submerge it in liquid. Keep battery dry at all times.
-  Do not attempt to charge battery using any method, apparatus, or connection other than the device's USB connector. For questions or instructions for the various ways to charge the space pack refer to this manual's [Charging your space pack](#) section.
- 
-  Do not attempt to replace any part of this battery.
-  If this battery is intended by Purchaser to be used by a minor, purchasing adult agrees to provide detailed instructions and warnings to any minor prior to use. Failure to do so is sole responsibility of Purchaser, who agrees to indemnify Manufacturer for any unintended use/misuse by a minor.
-  All batteries have gone through a thorough quality assurance inspection. If you find that your battery is excessively hot, is emitting odor, is deformed,

abraded, cut, or is experiencing or demonstrating an abnormal phenomenon, immediately stop all battery use and contact Manufacturer.

- ⓧ Before putting your space pack away for a long period of time, charge it for one hour.
- ⓧ Never dispose of batteries in the garbage. Disposal of batteries in the garbage is unlawful under state and federal environmental laws and regulations. Always take used batteries to your local battery-recycling center.
- ⓧ This product contains chemicals that are known to the state of California to cause cancer and birth defects or other reproductive harm.

Legal

This battery is meant for use only in conjunction with the appropriate mobile device. Please consult your device packaging to determine whether this battery is compatible with your particular mobile device. Manufacturer is not responsible for any damages to any mobile device incurred through the use of this product.

Manufacturer shall not in any way be liable to you or to any third party for any damages you or any third party may suffer as a result of use, intended or unintended, or misuse of this battery in conjunction with any device or accessory other than the appropriate mobile device for which this battery is designed. Manufacturer will not be responsible

for any damages you or any third party may suffer as a result of misuse of this battery as outlined above. If you are responsible for battery use with an unintended mobile device and damages result from such use, you agree to indemnify Manufacturer for any resulting injuries to any third part(ies).

mophie, space pack, the Space App icon, Do more, mophie loves you, "more time to rock, talk, surf, and send", the "rock/talk/surf/send" icons and the mophie logo are registered in the U.S. Patent and Trademark Office and are registered and pending in other countries. iPad, iTunes and Lightning are trademarks of Apple Inc. App Store is a service mark of Apple Inc. All rights reserved. Patents: mophie.com/patents

This device complies with part 15 of the FCC Rules and RSS-Gen of IC Rules. Operation is subject to the following two conditions:

(1) This device may not cause harmful interference, and (2) this device must accept any interference received, including interference that may cause undesired operation.

NOTE: This equipment has been tested and found to comply with the limits for a Class B digital device, pursuant to part 15 of the FCC Rules. These limits are designed to provide reasonable protection against

harmful interference in a residential installation. This equipment generates, uses and can radiate radio frequency energy and, if not installed and used in accordance with the instructions, may cause harmful interference to radio communications. However, there is no guarantee that interference will not occur in a particular installation.

If this equipment does cause harmful interference to radio or television reception, which can be determined by turning the equipment off and on, the user is encouraged to try to correct the interference by one or more of the following measures:

- Reorient or relocate the receiving antenna.
- Increase the separation between the equipment and receiver.
- Connect the equipment into an outlet on a circuit different from that to which the receiver is connected.
- Consult the dealer or an experienced technician for help.

MODIFICATION: Any changes or modifications of this device could void the warranty.

FAQ

How does the space pack interface work?

The space pack interface is a free iOS app called the mophie Space App. It allows you to access and manage the files you store in your space pack.

How do I add stuff to my space pack?

There are three ways to add items to your space pack:

- Transfer items from your iPad into your space pack. You can transfer items from the iPad Camera Roll, attachments from emails you have saved in your iPad (press and hold on an attachment; choose “Open in” and select “Space App”) or items via 3rd-party apps on your iPad (tap “Share” on an item; tap “Open In” and select “Space App”).
- Transfer items from your computer into your space pack. Use the included micro USB cable to connect your space pack to your computer, then use Windows Explorer (PC) or the Finder (Mac) to transfer files the same as you would transfer them to a thumb drive. (When you connect the space pack to the computer it will show up as a removable drive named “SPACE PACK.”)
- Use the Space App’s camera function to take photos. Those photos are automatically saved directly into the space pack’s “DCIM” folder.

I just transferred a bunch of photos from my iPad's Camera Roll into my space pack, but when I tap the All Files icon I can't find them. Where'd they go?

The transferred items are automatically placed inside a folder named "0000SYNC," which is inside the "DCIM" ("Digital Camera Images") folder. You can use the Space App to create your own folders in your space pack and move the transferred photos into them at any time.

How do I transfer the music from my iPad into my space pack?

You can't transfer music directly from your iPad into your space pack, but you can transfer it into your space pack from your computer via the included micro USB cable: After connecting your space pack to the computer, use Windows Explorer (PC) or the Finder (Mac) to access the artist/album folders inside [My] Music > iTunes > iTunes Media. Then transfer your music files into your space pack the same as you would transfer them into a thumb drive.

Can I transfer music from other computers to my space pack?

Yes. You can use the included micro USB cable to connect your space pack to any computer with music files, then use Windows Explorer (PC) or the Finder (Mac) to transfer the music files the same as you would transfer to a thumb drive.

I just finished transferring all the photos from my iPad's Camera Roll into my space pack to free-up storage, but the photos are still on my iPad. Why?

The Space App can't automatically delete files from your iPad. To free-up space in your iPad's storage you'll need to delete the photos from the iPad's Camera Roll yourself after you transfer them into the space pack.

I transferred a movie that I bought through iTunes into my space pack. How do I watch it on the Space App's viewer?

The Space App can't open videos with DRM (Digital Rights Management), which includes those purchased through iTunes. When you sync your phone, you can use iTunes to transfer the movie into your iPad and watch it using the iPad's viewer.

When I take photos using the Space App camera function, where are they saved?

They are automatically saved in your space pack's "DCIM" folder, not on your iPad's Camera Roll, which saves space on your iPad.

- You can move photos from your space pack to your iPad by selecting the photos and tapping the Share icon, then tapping "Save Image."
- You can connect your space pack to your computer and drag-and-drop the photos into your computer.

How does my space pack organize the stored files into collections?

Your space pack organizes your files based on their file type. For example, all audio files will be accessible when you tap the Music button, all photo files will be accessible when you tap the Photos button, etc. For a complete list of what file types will be organized into which collections, see [File Types by Collection](#), on page 35.

Why do I have to press the stainless steel battery level button on the back of the space pack every time I want to use the Space App?

To conserve the space pack's battery, the Space App automatically shuts off after it hasn't been used for 1, 2, 5 or 10 minutes. You can determine the amount of time by tapping the gear (Settings) icon on the Home screen and tapping "Sleep Mode." Whenever the Space App is asleep you need to press the metal battery level button on the back of the space pack to wake it up.

Do I need to back-up the files I store in my space pack?

As with any device that stores important files, you should regularly back up the contents of your space pack to another device (typically your computer). This will allow you to restore your space pack in the unlikely event that something happens to your stored items.

Backing up your space pack is easy:

1. Use the supplied micro-USB cable to connect your space pack to your computer. (It will show up as a removable drive named "SPACE PACK.")
2. Copy the files into a folder on your computer the same as you would transfer from a thumb drive. (We suggest naming the folder "Space Pack Backup," or similar.)

We suggest backing-up your space pack every time you transfer files into it from the iPad or from a computer.

If the space pack battery dies, can I still access my files?

The space pack has additional battery power reserved exclusively for the file storage functions, on top of the 1,700mAh of battery power that's available to charge your phone. So even if your space pack doesn't have enough juice left to charge your phone, it still has enough reserve battery power to keep your files safe. You can then connect your space pack to your computer to access your files and your space pack will immediately begin charging from your computer. To keep everything running smoothly, we suggest giving your space pack a full charge from a computer or AC charging adapter any time you press the metal status button and only one or two of the status LEDs lights.

What is “Other Files?”

The “Other Files” collection will include all the files in your space pack that are not supported by your iPad. By carrying these items in your space pack, you can keep them with you (like a thumb drive) and then connect your space pack to a computer and open the items on the computer.

Can I sync my iPad with iTunes while it’s installed in the space pack?

Yes. The space pack has Pass-Through Charge and Sync, which lets you sync to iTunes when the space pack is connected to the computer using the mophie micro USB cable. The space pack also lets you sync wirelessly.

How does the extra battery work?

When you slide your phone into the case, a connector at the base plugs into the port at the bottom of the phone. Flip the standby switch on the back from red to green to start charging your phone. After using up all the power in the space pack, just recharge it with the included micro USB cable for more on-the-go power.

Why aren’t the LEDs blinking while my space pack is charging?

After connecting to a power source, the LED status indicators will start blinking to indicate charging. The lights will turn off after 30 seconds allowing for a good night’s rest. Remember to check the status

indicator before you disconnect. When all four LEDs are lit, your space pack is fully charged.

What is the best method for charging my iPad using the space pack?

Assuming the iPad and space pack are both fully charged, we recommend waiting until your iPad has 20% battery left. When you're in the red, flip space pack's standby switch to green and let space pack to do the heavy lifting. The iPad requires more power to charge past 80%, so if you want to get the greatest battery boost from the space pack, we suggest flipping back to standby mode until your phone battery is low again. This isn't the end-all-be-all, but we like it.

What is the best method for charging my space pack?

Connect your space pack to a power source using the included micro USB cable. You can plug the cable into your computer or any "Made for iPad" power source with a USB out. You do not need to remove your iPad from the space pack to charge. In fact, leaving the space pack on your phone while charging will actually charge both it and your iPad simultaneously!

How many charge cycles do you get out of the space pack? Or, in other words, how long will the space pack last?

space pack is rechargeable for over 500 full cycles. A full cycle is when the case is charged from 0%

to 100%. Partial cycles, like charging from 25% to 100%, will not count as a full cycle until all of the partials equal 100%. After 500 cycles, the battery in space pack may provide less than 75% of its original capacity. This is normal for any product with a lithium polymer battery.

What are the benefits of switching the space pack to standby mode?

Using the standby switch will give you the biggest battery boost from your space pack. The iPad uses additional power to be on a constant charge, so charging when your phone battery is low will let you get the most from your space pack.

What is mophie's return policy?

mophie reserves the right to claim a 20% restocking fee upon return. Visit mophie.com for our full "Return Policy."

Will I always receive 100% extra the battery life with my space pack?

We cannot guarantee that you will receive a 100% battery boost. The amount of additional battery you will receive depends on a variety of factors that are different for every user.

Does the space pack block the speaker, microphone, camera, or any other ports?

Of course not. In fact, space pack is designed to act as a virtual speaker box! Sound is redirected from the bottom of the phone to the front resulting in a richer, fuller sound quality.

Does space pack interfere with antenna reception?

Not a chance.



more time to rock, talk, surf and send