

ANNEX A: CONSTRUCTION PHOTOS OF EUT

1. Outside view 1 of EUT



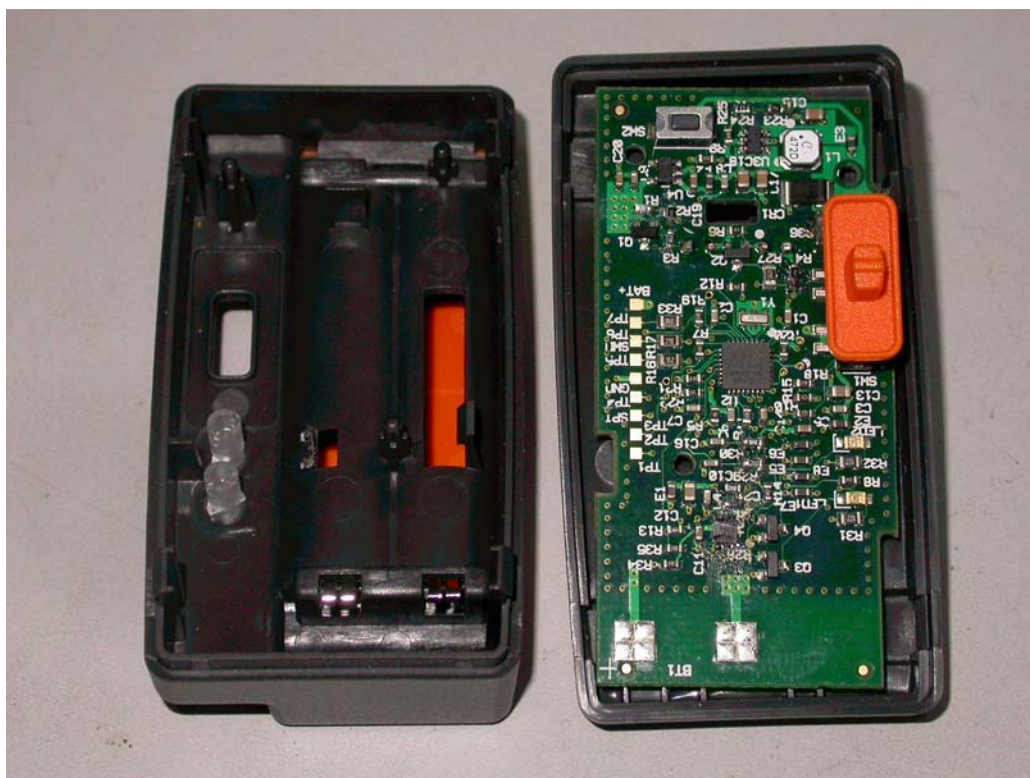
2. Outside view 2 of EUT



3. Outside view 3 of EUT



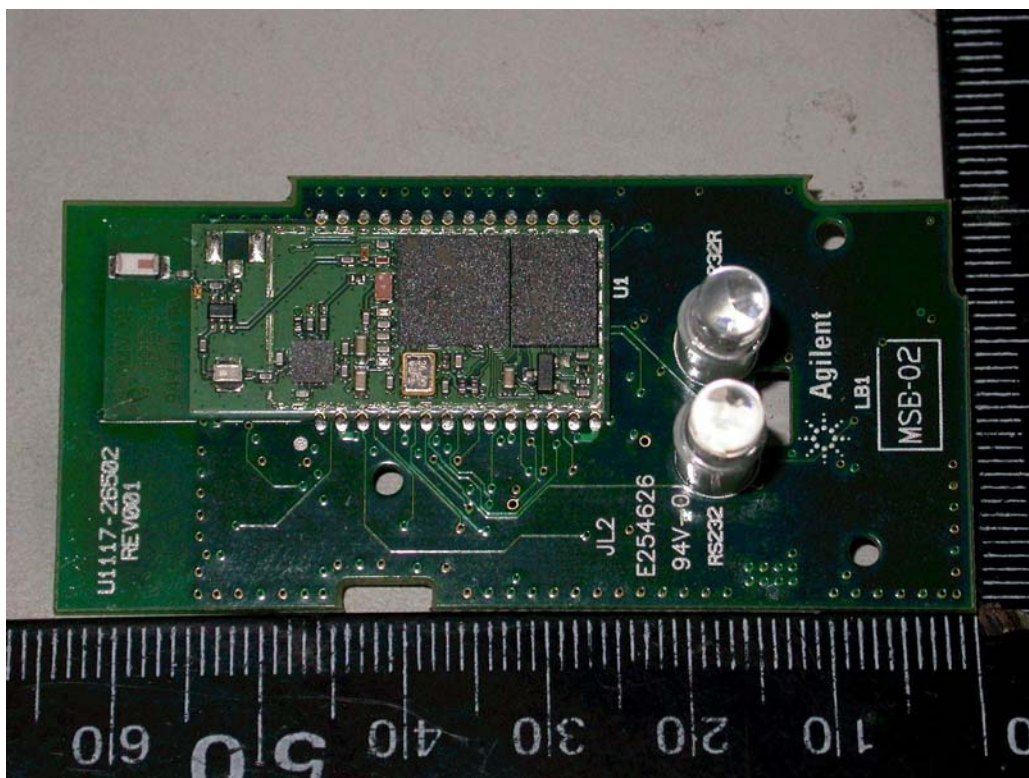
4. Inside View 1 of EUT



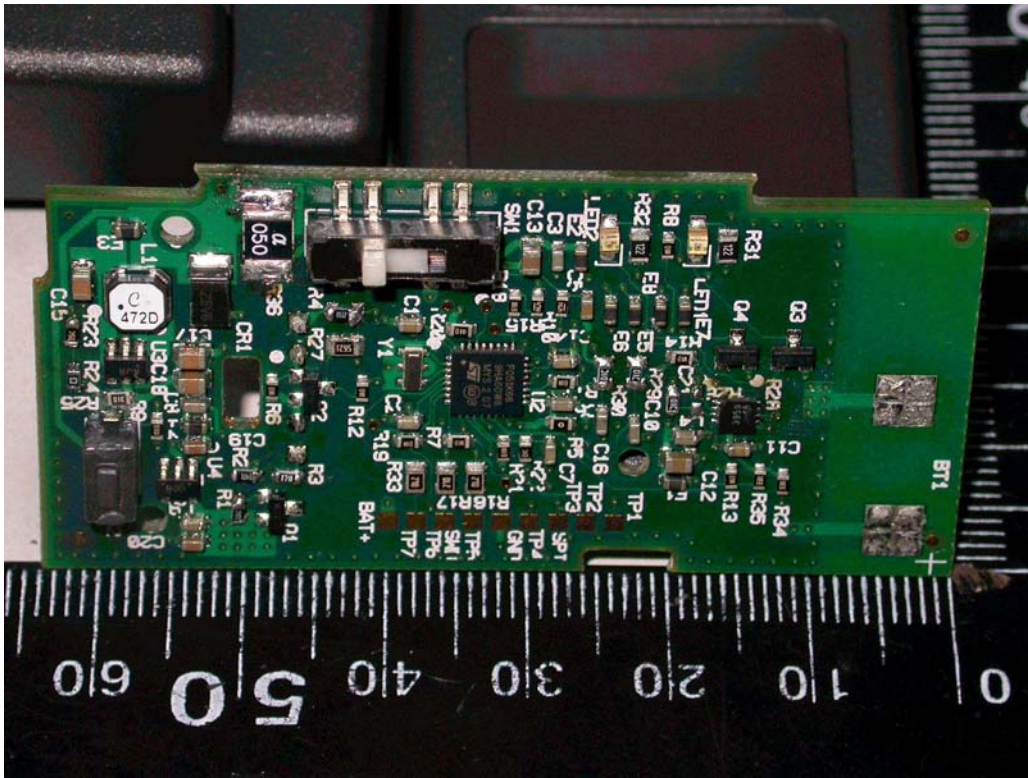
5. Inside View 2 of EUT



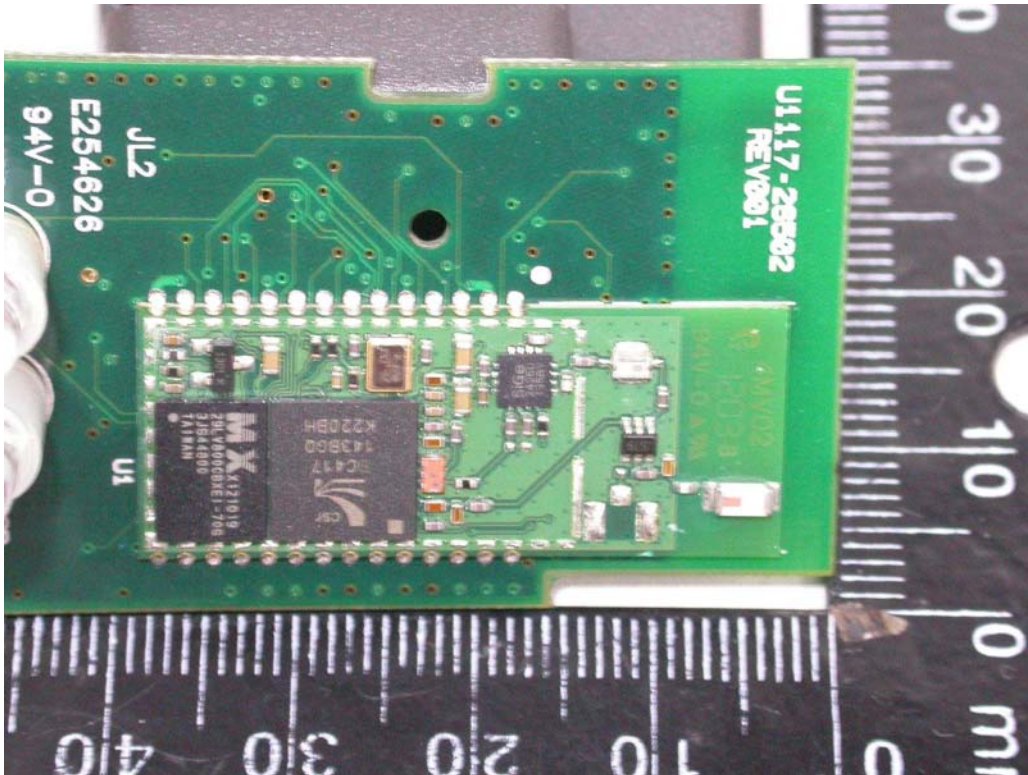
6. Front view of PCB



7. Rear view of PCB



8. Module



Measurement Position

EUT Position Front



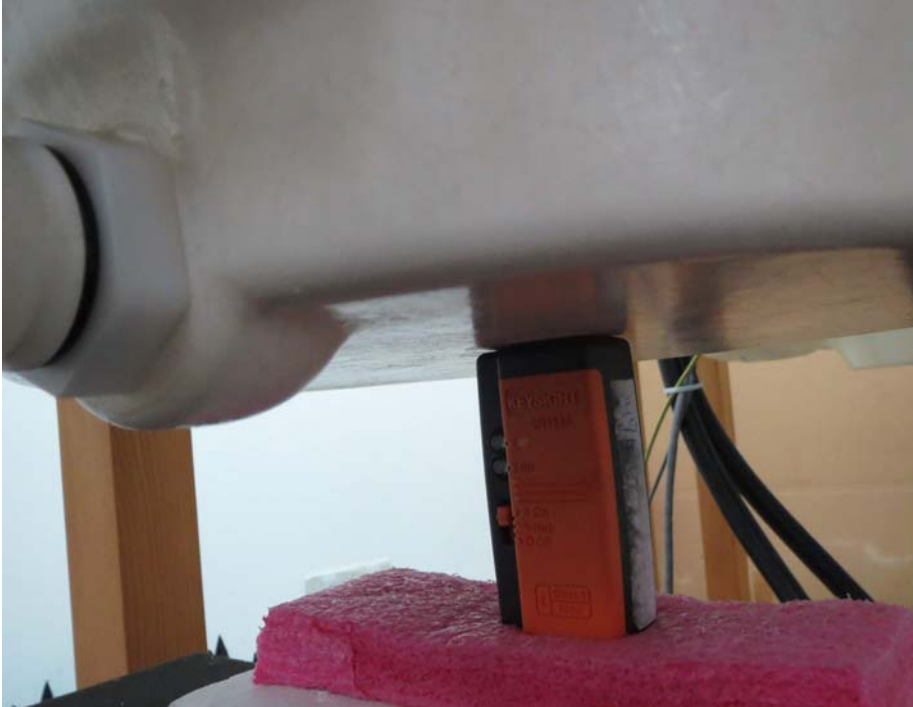
The EUT (the bottom of EUT site) to the ELI4 phantom distance is 0 mm.

EUT Position Back



The EUT (the bottom of EUT site) to the ELI4 phantom distance is 0 mm.

EUT Position Top



The EUT (the bottom of EUT site) to the ELI4 phantom distance is 0 mm.

EUT Position Bottom



The EUT (the bottom of EUT site) to the ELI4 phantom distance is 0 mm.

EUT Position Right



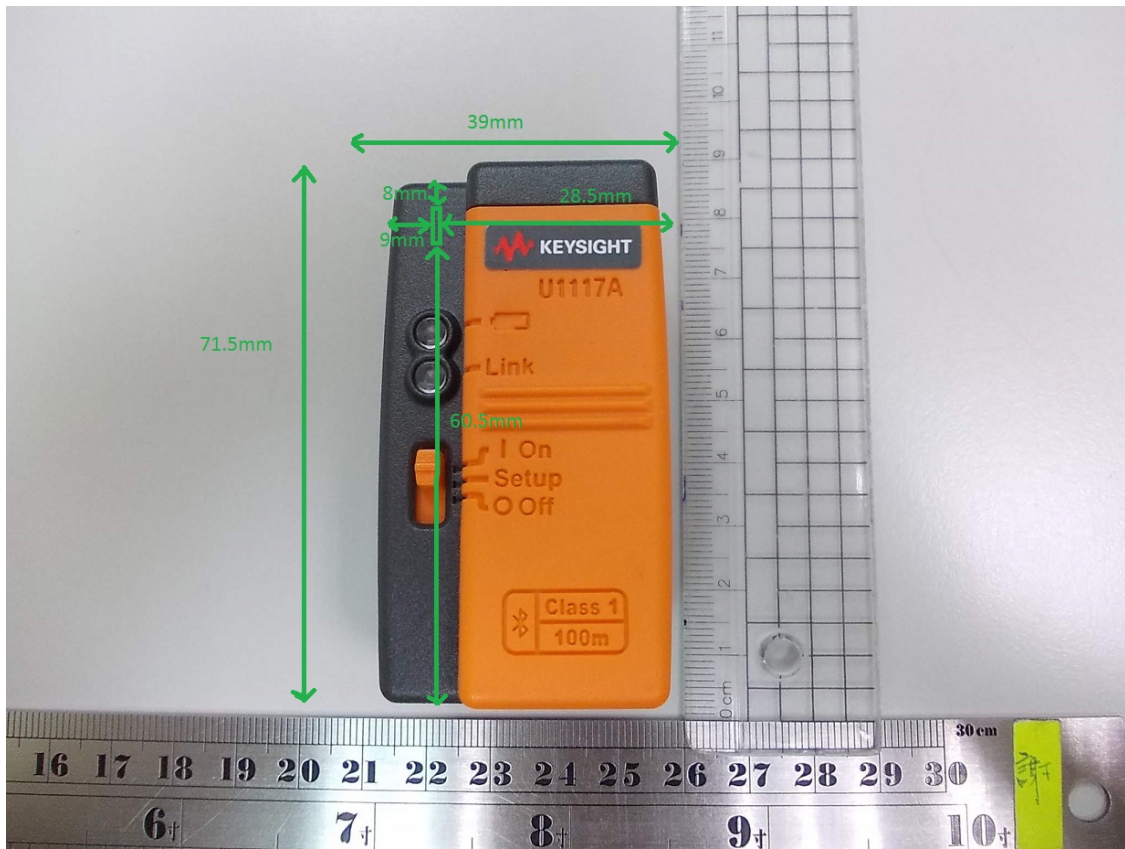
The EUT (the bottom of EUT site) to the ELI4 phantom distance is 0 mm.

EUT Position Left



The EUT (the bottom of EUT site) to the ELI4 phantom distance is 0 mm.

Antenna Position



	Dimension	
	Length	Width
Bluetooth Chip Antenna	3.5mm	1.5mm
EUT	108mm	92mm