

150Mbps

USB WIRELESS ADAPTER

User's Manual

MTK Version 1.0

Federal Communication Commission Interference Statement

This equipment has been tested and found to comply with the limits for a Class B digital device, pursuant to Part 15 of the FCC Rules. These limits are designed to provide reasonable protection against harmful interference in a residential installation. This equipment generates, uses and can radiate radio frequency energy and, if not installed and used in accordance with the instructions, may cause harmful interference to radio communications. However, there is no guarantee that interference will not occur in a particular installation. If this equipment does cause harmful interference to radio or television reception, which can be determined by turning the equipment off and on, the user is encouraged to try to correct the interference by one or more of the following measures:

- Reorient or relocate the receiving antenna.
- Increase the separation between the equipment and receiver.
- Connect the equipment into an outlet on a circuit different from that to which the receiver is connected.
- Consult the dealer or an experienced radio/TV technician for help.

This device complies with part 15 of the FCC Rules. Operation is subject to the following two conditions: (1) This device may not cause harmful interference, and (2) this device must accept any interference received, including interference that may cause undesired operation.

FCC Caution: Any changes or modifications not expressly approved by the party responsible for compliance could void the user's authority to operate the equipment.

The device has been evaluated to meet general RF exposure requirement. The device can be used in portable exposure condition without RF striction.

1. Introduction

Thank you for purchasing the IEEE 802.11b/g or 802.11n Wireless USB Adapter. This Wireless Adapter is easy to use and easy to setup. If you have been tired of dealing with all those messy wires to connect a laptop or PC to office or home network, this Wireless adapter is an ideal access solution for wireless Internet connection.

A typical Internet access application for the USB wireless adapter is shown as the following figure:



There are two different ways to access Internet:

1. With a wireless adaptor, receiving and transferring signal via a wireless router, then passed to an ADSL modem, then to local ISP (Internet service supplier) through a telephone line.
2. With a wireless adaptor, receiving and transferring signal via local AP (Access Point) or so called Hotpoint directly.

Tips: An 802.11 LAN is based on a cellular architecture where the system is subdivided into cells, where each cell (called Basic Service Set or BSS) is controlled by a Base Station (called Access Point, or in short AP).

2. Package Contents:

- 150Mbps 802.11n USB Wireless Adapter.
- Adapter Installation disc.
- User's Manual.

Warranty

The warrants for the end user ("Customer") that this hardware product will be free from defects in workmanship and materials, under normal use and service, for twelve (12) months from the date of purchase from its authorized reseller. Information in this document is subjected to change without prior notice.

3. Installation

To install the driver of the USB adapter, please use administrator user account to login before the following steps:

Tips: the latest original drivers can be down loaded from the website of Ralink chipset manufacturer. The current website is http://www.mediatek.com/cn/07_downloads/01_windows.php. To find a correct driver, please identify the chipset type applied in the adapter you have.

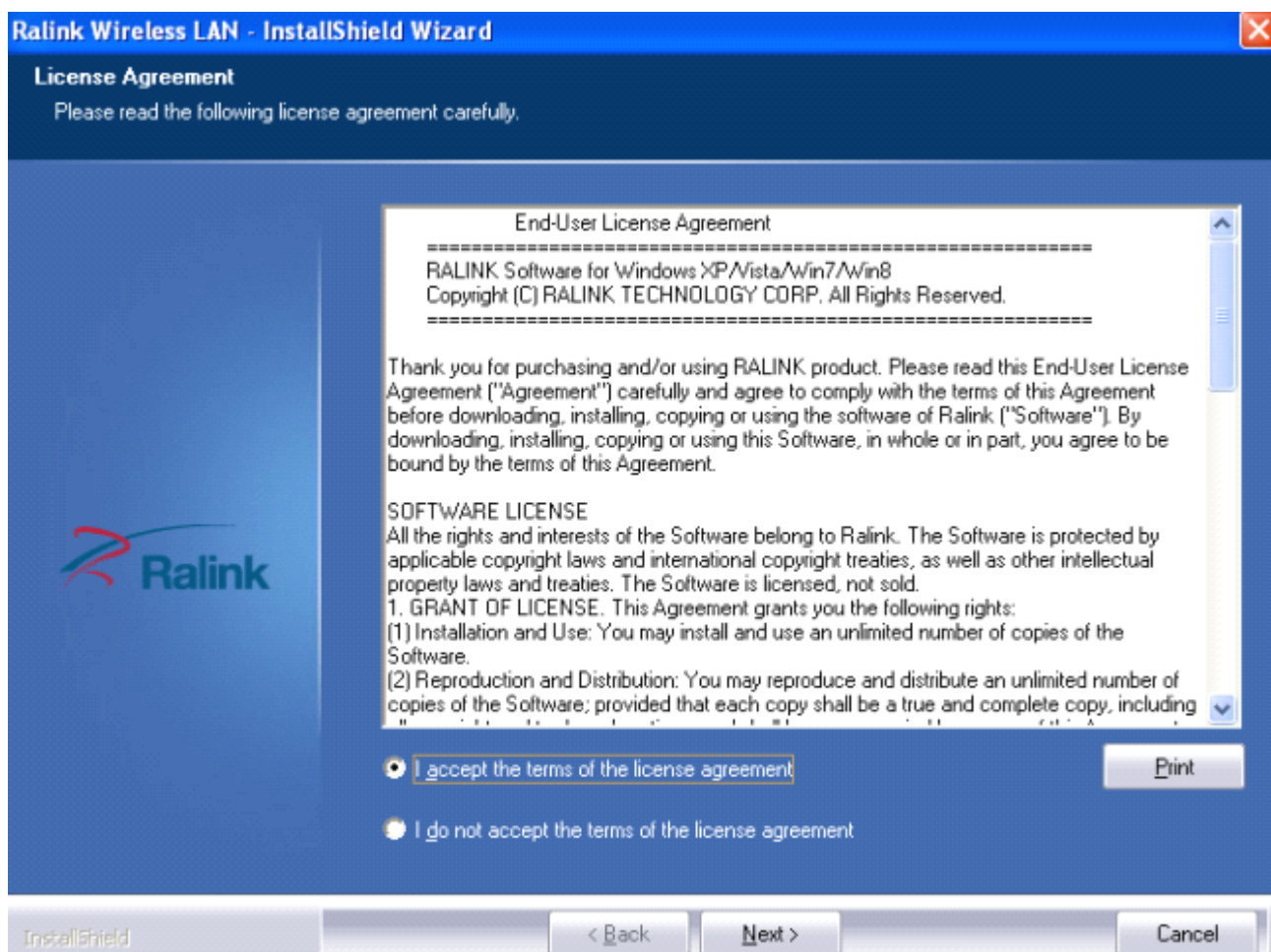
For Windows XP :

The system will detect a new hardware has been added, and start the “**Found New Hardware Wizard**”. Click on “**Cancel**” .

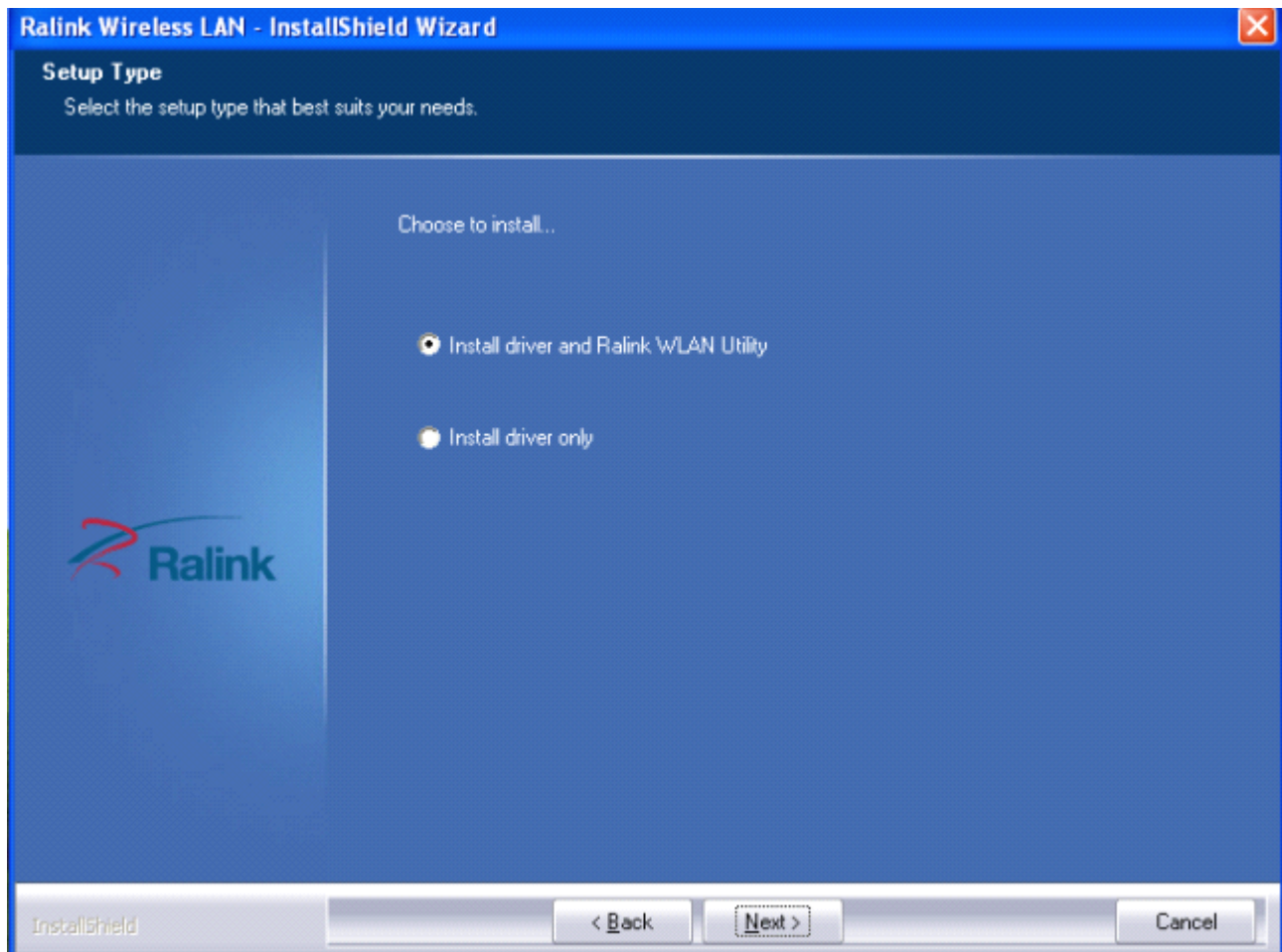
- 1) Please insert the disc into your CD-ROM drive. The disc should auto start ,displaying the flowing window ,if it does not start ,open the browser window ,find the autorun .exe file in your CD-ROM folder, click to run it.
- 2) Ralink has integrated all the 150Mbps 802.11n drive into one file . Click to run the “Drive Installation ”.

Notes: Because Ralink often updates software, the drivers contained in the disc might be changed without prior notice.

- 1) Follow the instructions and prompts of the “**InstallShield Wizard**” to finish the driver installation:
 - a. Select the “**I accept the terms of the license agreements**”, then click the “**Next**”.

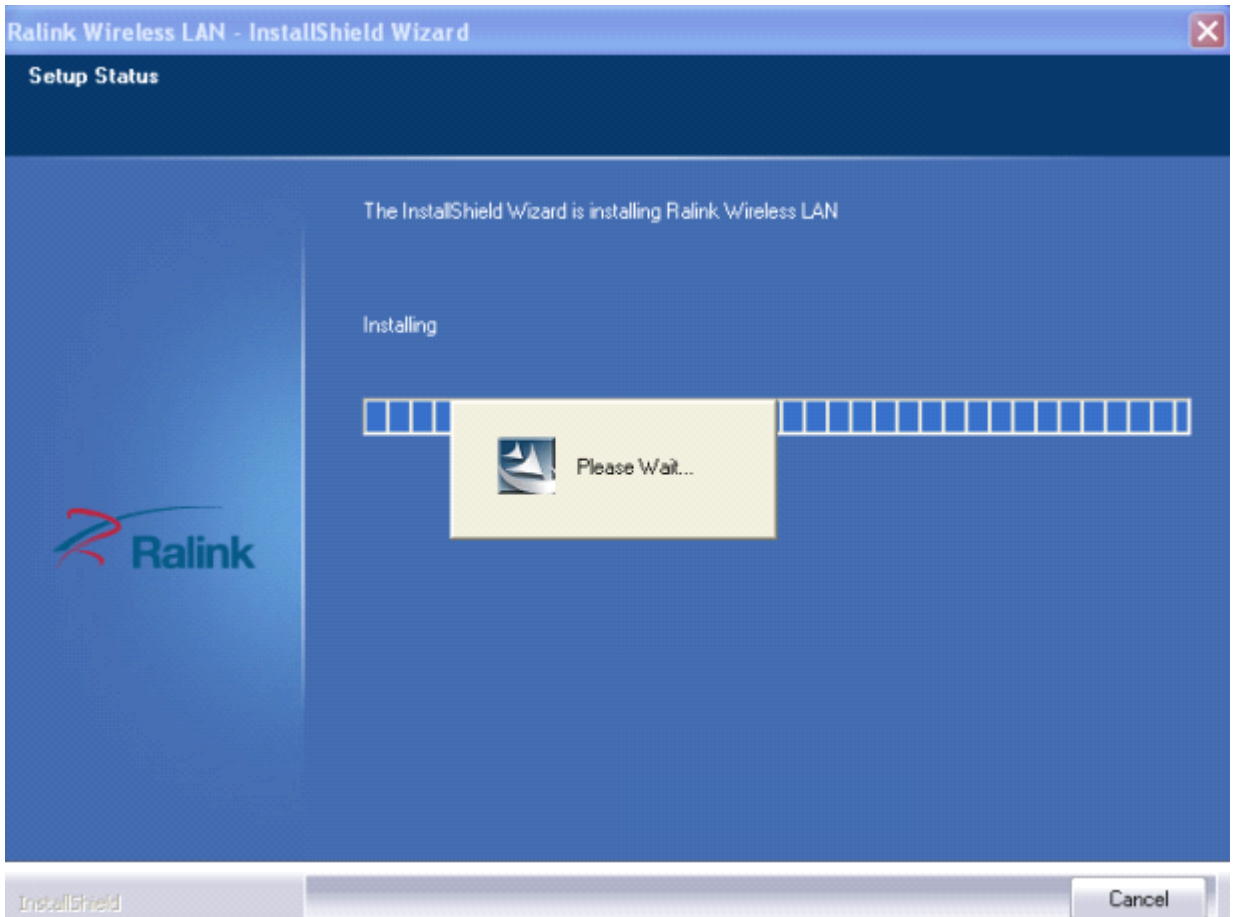
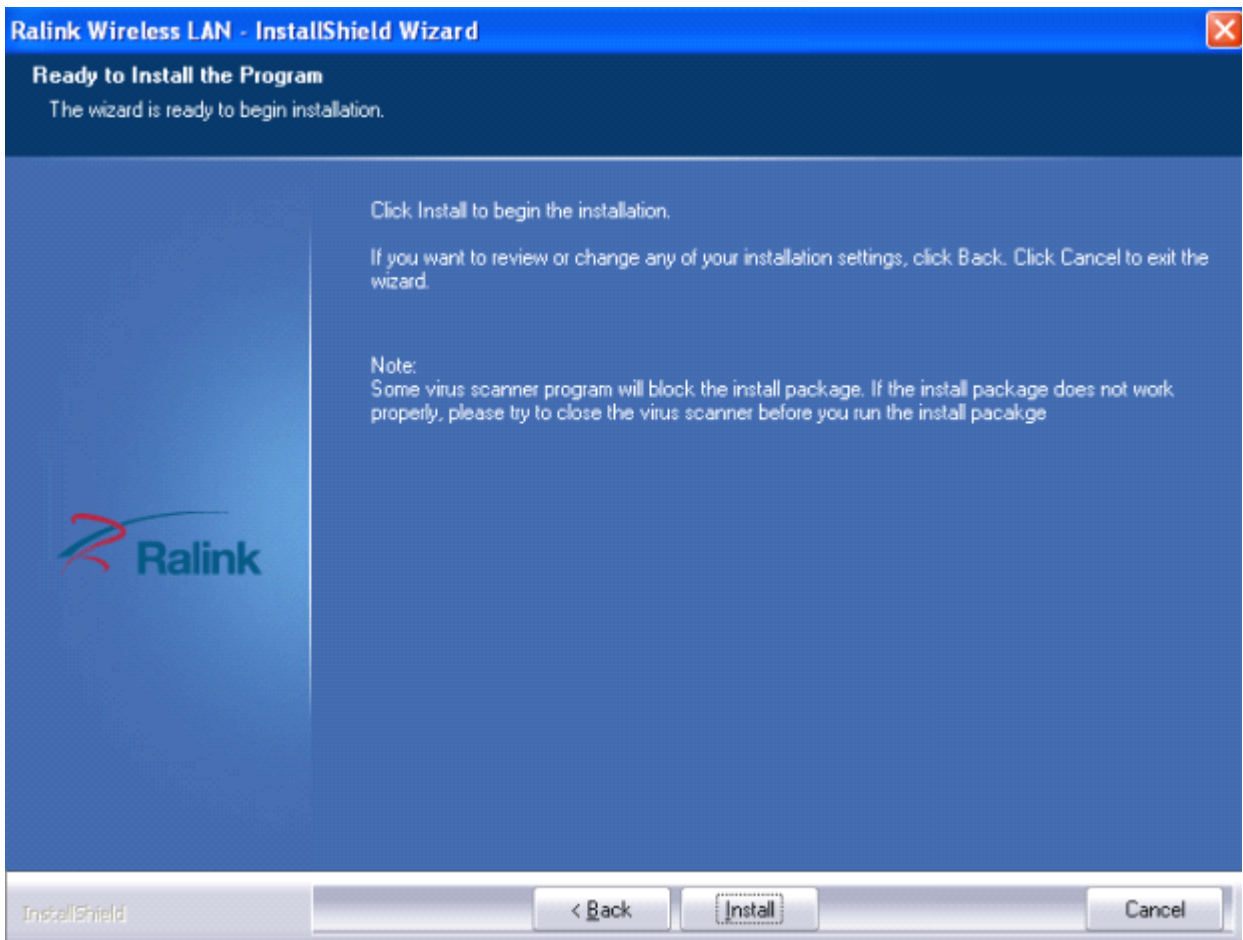


- b. There shows a setup type window, you can select “**Install driver only**” or “**Install driver and Ralink WALN utility**” and then click the “**Next**”.

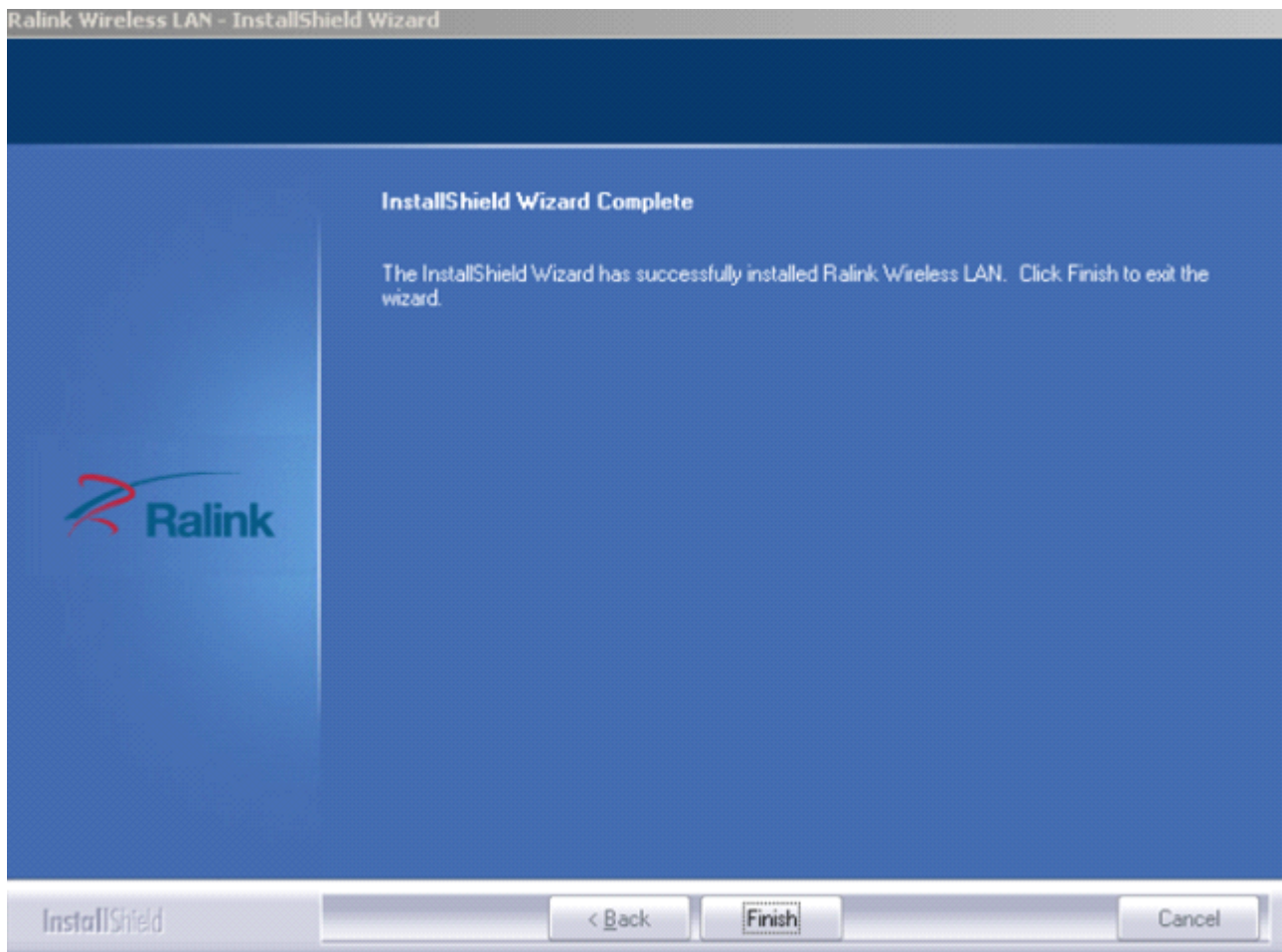
**Tips:**

- 1). The Windows XP utilizes a "**Wireless Zero Configuration(WZC)**" Service built into the operating system. Many wireless network adapter cards utilize this service.
- 2). Ralink the chipset manufacturer has developed an utility for setting up wireless connection. If you select this item, you can switch between the Windows XP's WZC service and the Ralink WLAN utility service later.

- c. Click the "**Install**" to confirm the installation, there shows the installation progress.

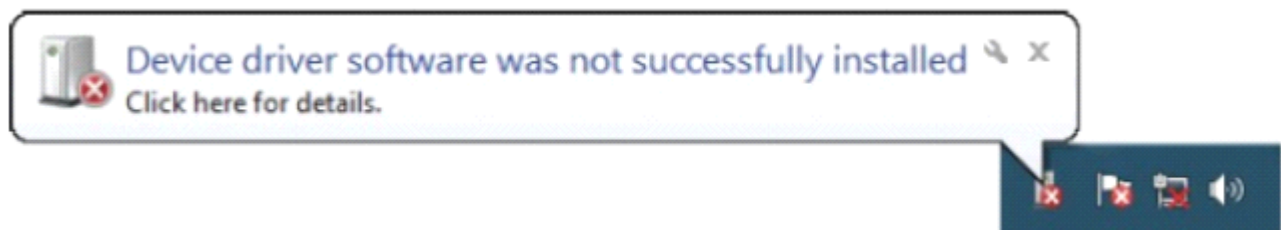


d. Click "**Finish**" to finish the driver installation.



For Windows 7:

Once the wireless USB adapter be plugged into an USB port, the flowing message will appear on screen .



The following installation procedures are similar to those of Windows XP .Please refer to the installation steps for Windows XP.

For Windows 8:

The installation procedures are similar to those of Windows XP .Please refer to the installation steps for Windows XP.

4. Wireless Connection

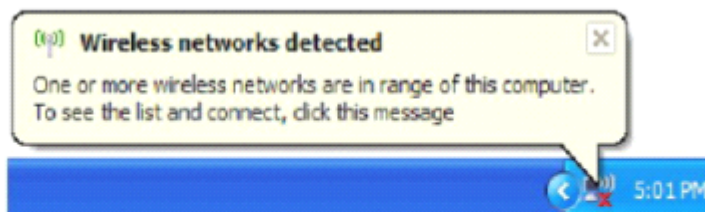
For Windows XP :

- 1) After finishing driver installation, insert the USB adapter to Notebook or PC that supports USB


2.0/1.1 interface.

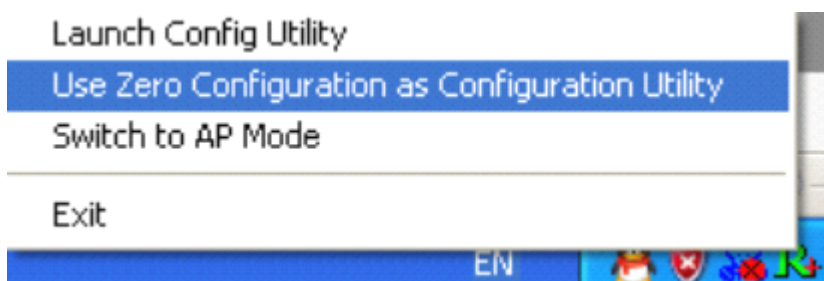
Remarks: Make sure to connect the adapter to an USB port on your computer directly rather than an USB hub. Although it might work when connecting with an USB hub, the likelihood of configuration problems will be higher.

- 2) The system shows a wireless utility icon in the Windows system tray, which locates in the bottom-right corner of your computer screen, and pops up a message that indicates a new hardware is found and installed, something like this:

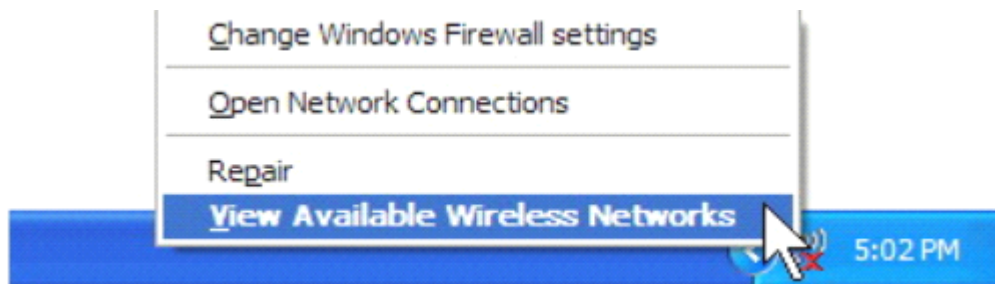


Should the service "Wireless Zero Configuration (WZC)" be applied.

- 3) Before you begin, ensure WZC is enabled, by right-clicking on the Ralink icon  in the task bar in the bottom right corner of your screen.
- 4) In the menu that appears, select "Use Zero Configure as Configuration Utility" to use Windows wireless management feature, Windows Zero Configure (WZC) helps to manage your Wireless Network Connection.

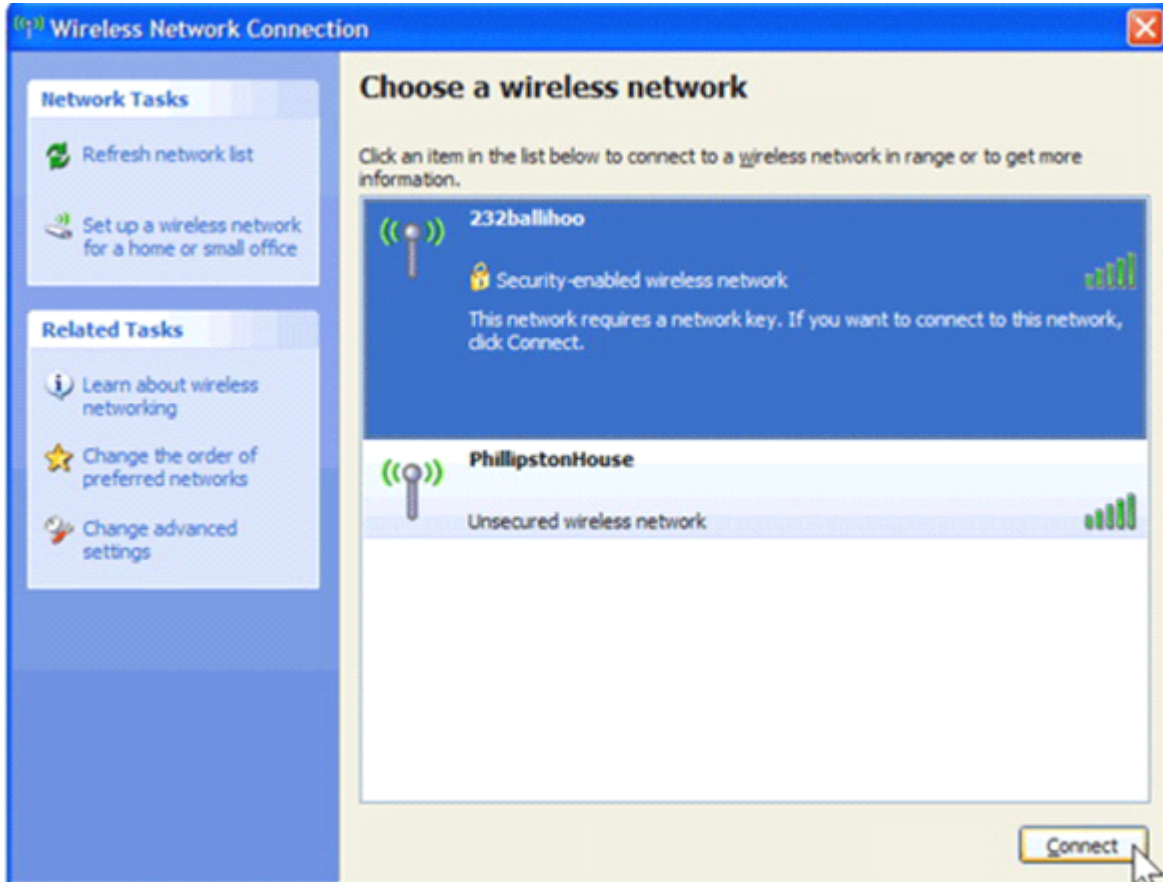


- 5) Right click the icon and then select "View Available Wireless Networks" to launch the utility, the Wireless Network Connection window appears and displays your wireless network listed with the SSID you choose.

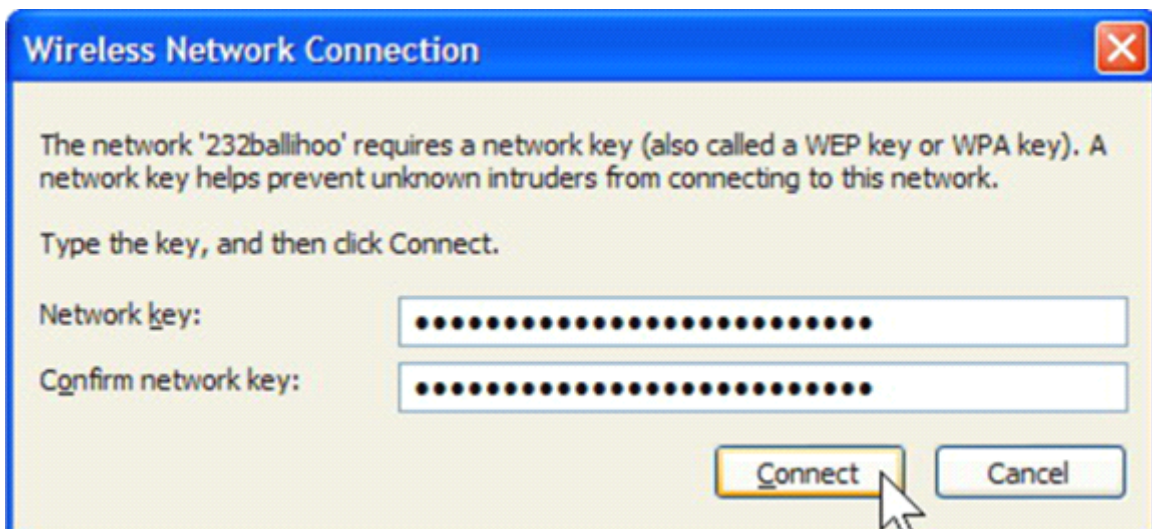


Notes: Before configuring your WiFi access, you need to have your network's SSID (service set identifier), security key and authentication type handy. Check the documentation coming with your router, ask your network administrator to get the information.

- 6) If you don't check your network, click "Refresh network list" in the upper left corner. If you are locating within the valid range of hotspots or wireless routers, all available networks will be recognized and listed automatically. Click your preferred network, and then click "Connect" in the lower right corner.



- 7) If the network security key hasn't been inputted before, Windows XP prompts you to enter the network's security key to access the wanted SSID. Type the encryption key that you wrote down earlier in both the Network key and Confirm network key boxes, and then click "Connect".



Tips: If there are free hotspots, simply select the network you want from the list displayed, then click

“Connect”. It tries to launch your Internet browser—you should be connected to the Internet.

If there is a pay hotspot, signing in or up will require either to enter your login information—if you're an existing customer, or to enter your credit card information for payment, it is just decided by you. Then clicking the Connecting, your default Internet browser will launch and take you to the service provider's login page. Most providers have very simple and step-by-step instructions for you to sign up and then to be connected. Another way to access the service provider's login page is to simply launch your Internet browser, if there's a pay network available, you'll be taken directly to the login page.

Should the service of Ralink wireless connection utility be applied.

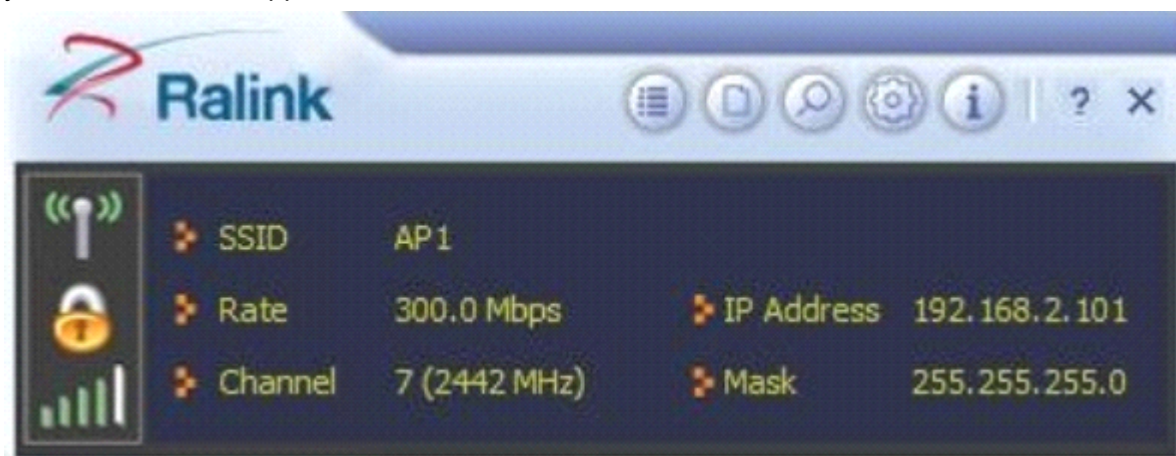
1) After the installation of Ralink utility, the system shows a special wireless utility icon in the Windows system tray, which locates in the bottom-right corner of your computer screen:




1)

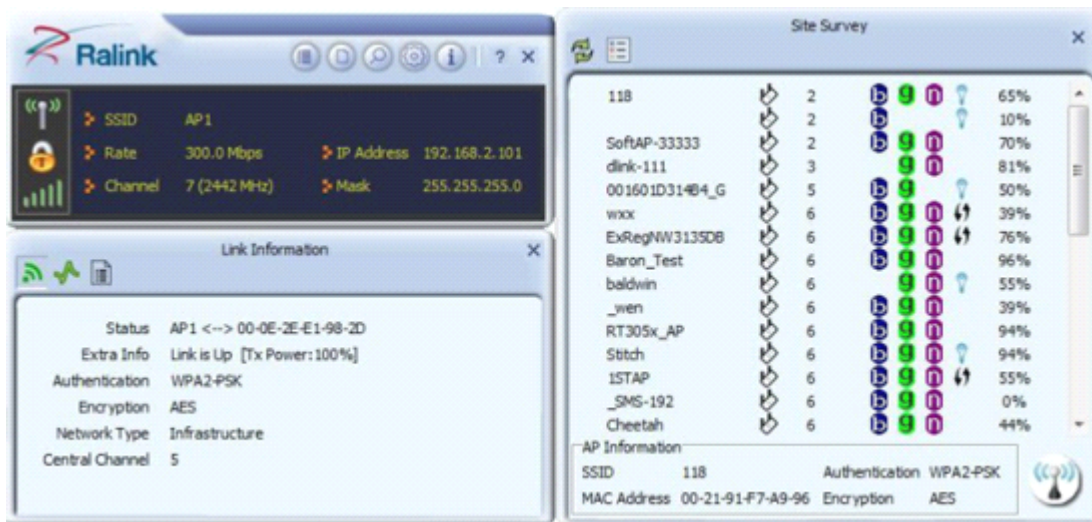
2) when an USB wireless adapter is inserted into an USB 2.0/1.1 port of Notebook or PC, the icon changes colors according to the wireless signal quality.

3) Double-click the icon or right click the icon and then select “Launch Config Utility” to launch the utility, the RaUI window appears like:



The Ralink wireless utility starts in compact mode as shown above, provides profile management, the available networks listing, a statistical counter display, Wi-Fi multimedia (WMM), protected Wi-Fi setup, Cisco compatible extensions (CCX), call admission control (CAC), radio controls, Ralink

driver/utility information, and help functions. Clicking the expanding icon  can change to the full mode as shown below:



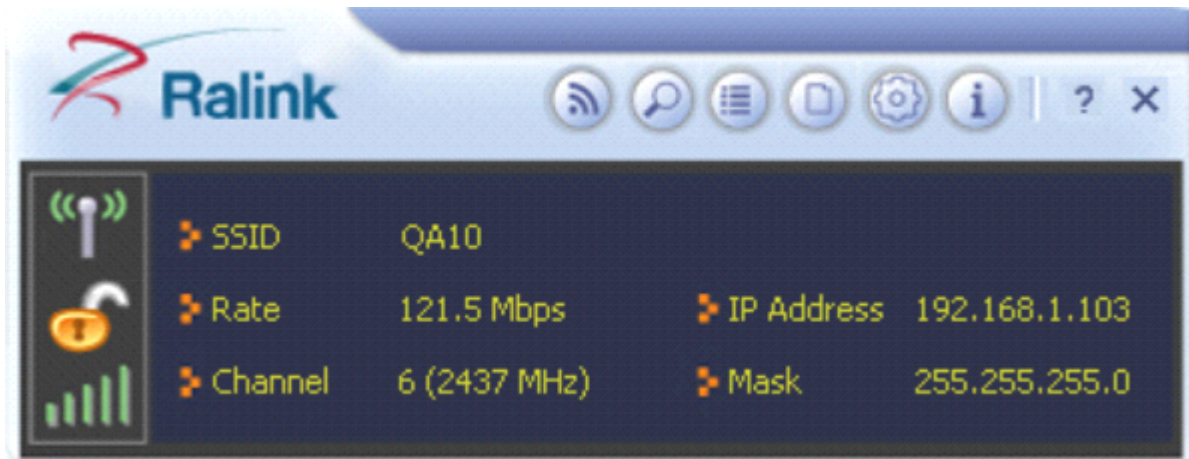
In this utility, there are two applications can be selected : the Station mode and AP mode .

- ❖ **Station mode (Client mode)** : it is the default access way , the USB wireless adapter services as a client to access Internet through other router or AP.
- ❖ **AP mode** : it sets the USB wireless adapter as an AP, which allows the other users can connect to Internet through your computer. Before using the mode, it must be available that an existed Internet connection via wire Ethernet connection or by 3G wireless connection.

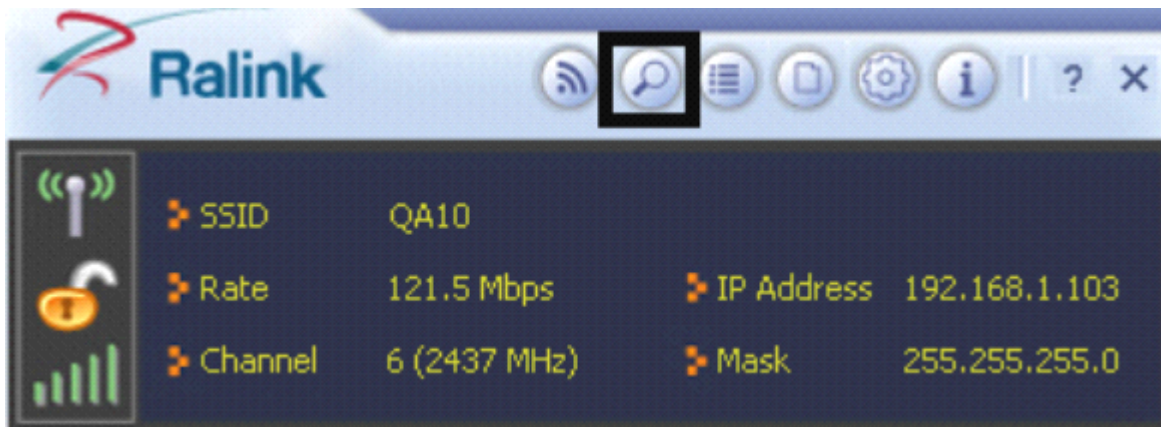
Tips:Point the cursor to the Ralink icon location on bottom-right corner of your computer screen, right click the mouse, from the pop up list, you can select the station mode or AP mode.


4) Below are the steps to connect to a wireless network using the Ralink Utility.

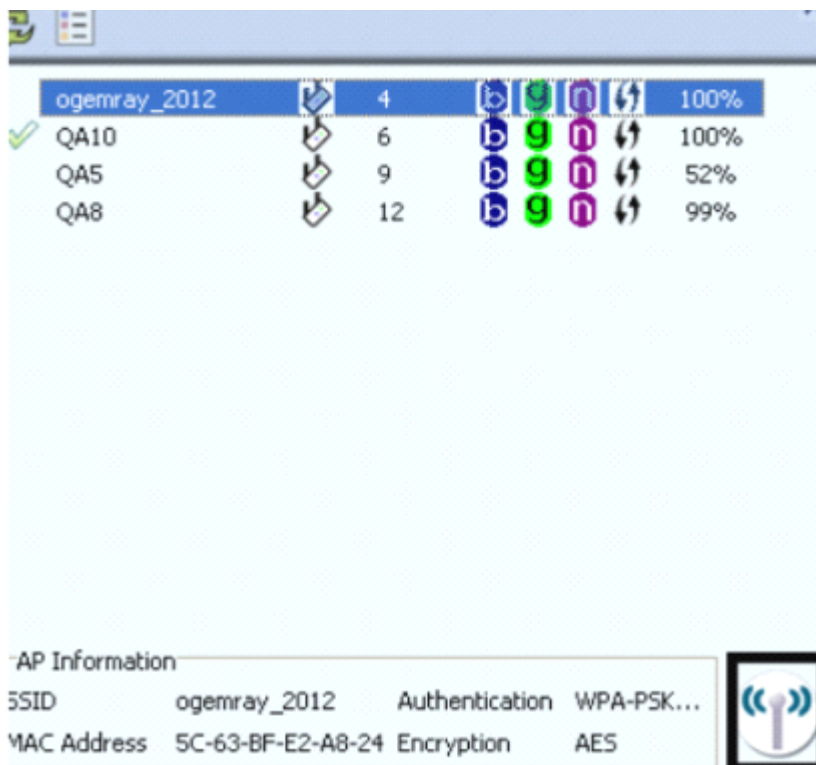
- a. Open the Ralink Utility by double-clicking on the Ralink Utility icon in the taskbar.
- b. The Ralink Utility appears ,by default connected to an available open wireless network. Check the name of the network to which you are connected. If this is the correct network, no father steps are required.



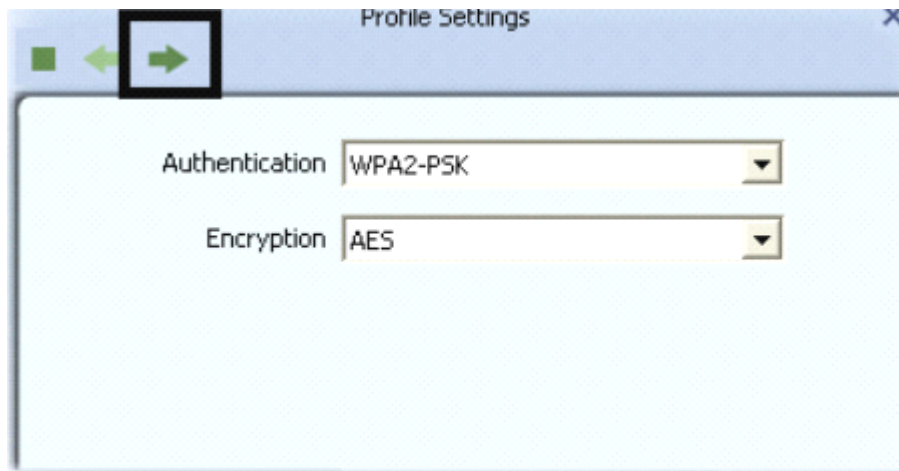
c. To connect to an alternative network ,click the Available Networks button.



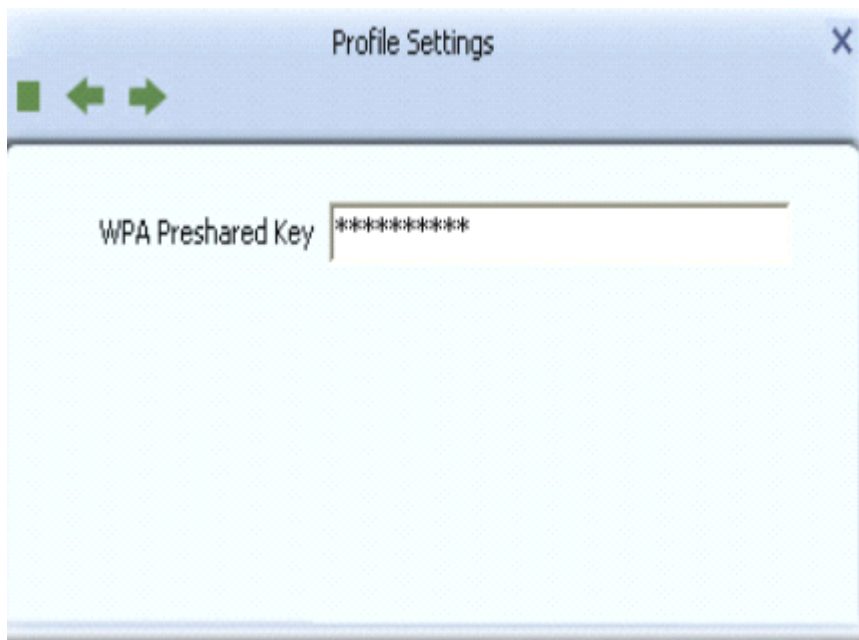
- d. In the Available Networks window that appears, select the name of the network to which you are connecting. Then click the connect icon  and wait several seconds while the Utility sets up a connection .



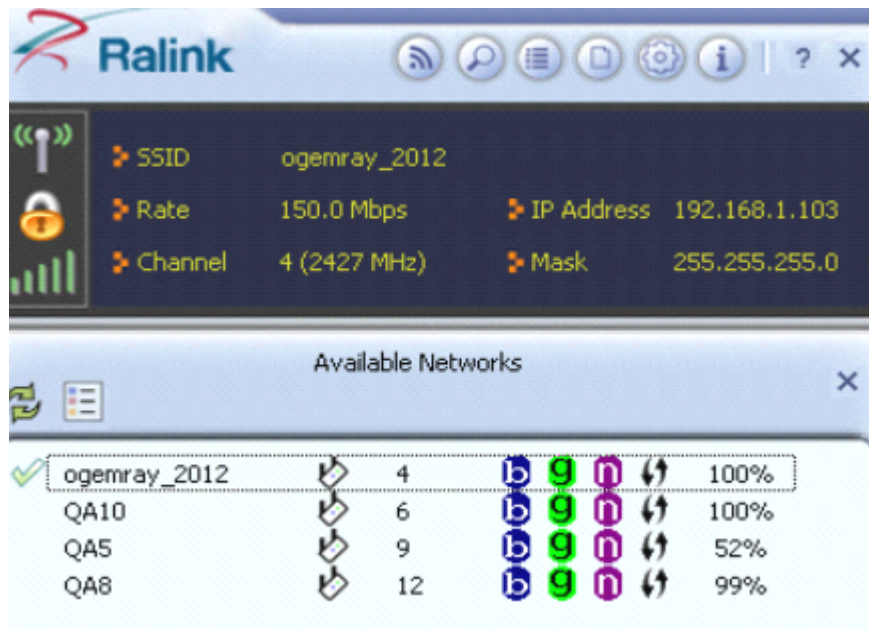
- e. The Ralink Utility automatically detects and displays the security settings of the network to which you are connecting in the Profile Setting screens. If the Utility shows that WPA-PSK or WPA2-PSK security is detected as shown Below , click the right arrow to save your settings.



- f. In the screen that displays, in the 'WPA Preshared Key' field ,type a security key, the same as that used by the AP or wireless router to which you are connecting. Click the right arrow to save your settings and connect to the network.



- g. Once you are connected the Available Networks shows the status of your connection.



For Windows 7:

Notes : Windows Zero Configuration (WZC) is not necessary in Windows Vista, Windows 7 or higher version OS, you can use WZC and the Ralink Utility to manage the adapter simultaneously .

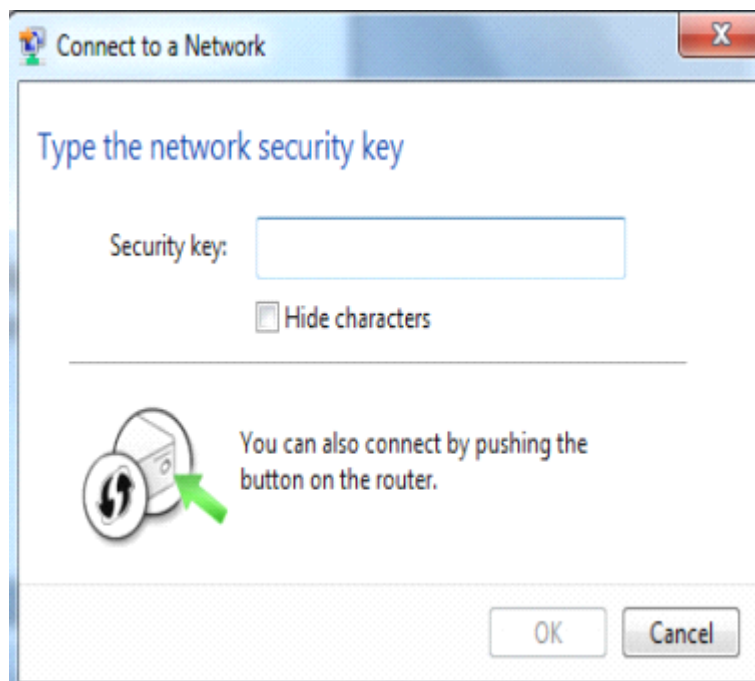
- 1) Click on the wireless networks icon in the task bar in the bottom right hand corner of your screen to display the available wireless networks.



- 2) Click the "Connect" button to connect to the select network .



- 3) If your network has wireless security Configured,enter the required setting. The following is an example only, your network setting may differ.



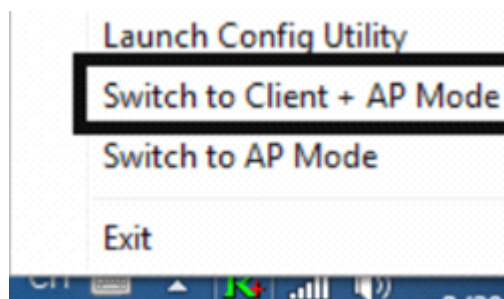
- 4) The success of your connection is indicated by the wireless network icon.



Notes : The steps of using the Ralink Utility to connect a wireless network is the same as those described in Windows Xp .

In addition to station and AP mode, there is the Client + AP Mode to be selected in windows 7 as well.

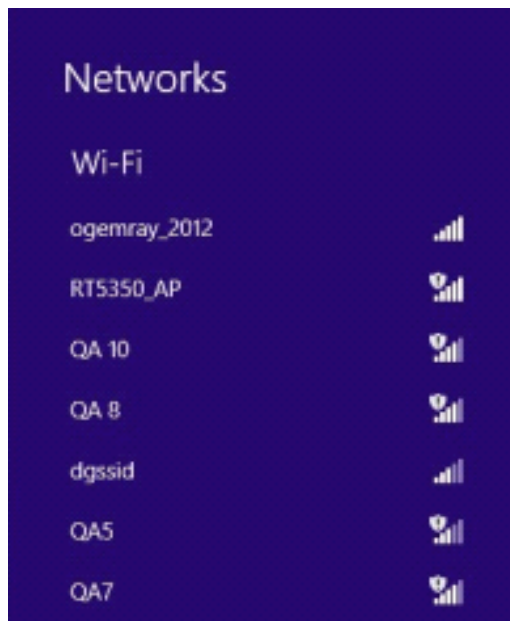
Which means: other wireless devices connect to -> Soft-AP of the adapter -> the adapter (Client mode with Internal ICS sharing)-> connect to other AP or Router -> Internet.



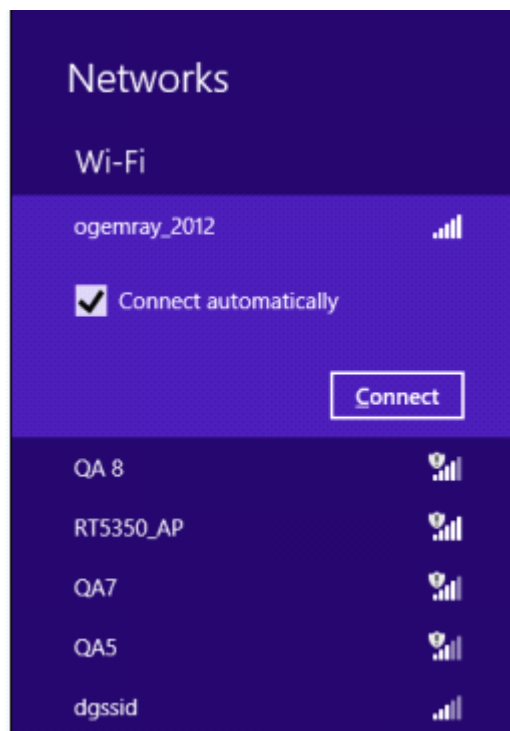
This mode lets you use the adapter both as a Soft-AP and client at the same time. Switch to this mode, you can let a wireless adapter be connect to a wireless (Soft-AP) with Internet connected, and let other adapter be indirectly connect to Internet via the Soft-AP wireless network.

For Windows 8:

- 1) Click on the networks icon in the task bar in the bottom right hand corner of your screen to display the available wireless networks.



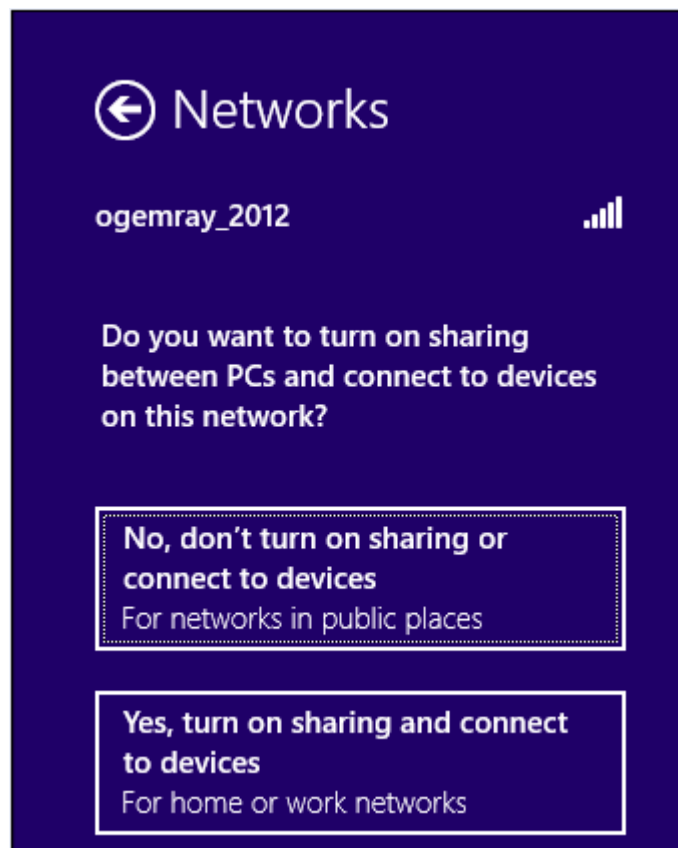
2) Click the "Connect" button to connect to the select network .



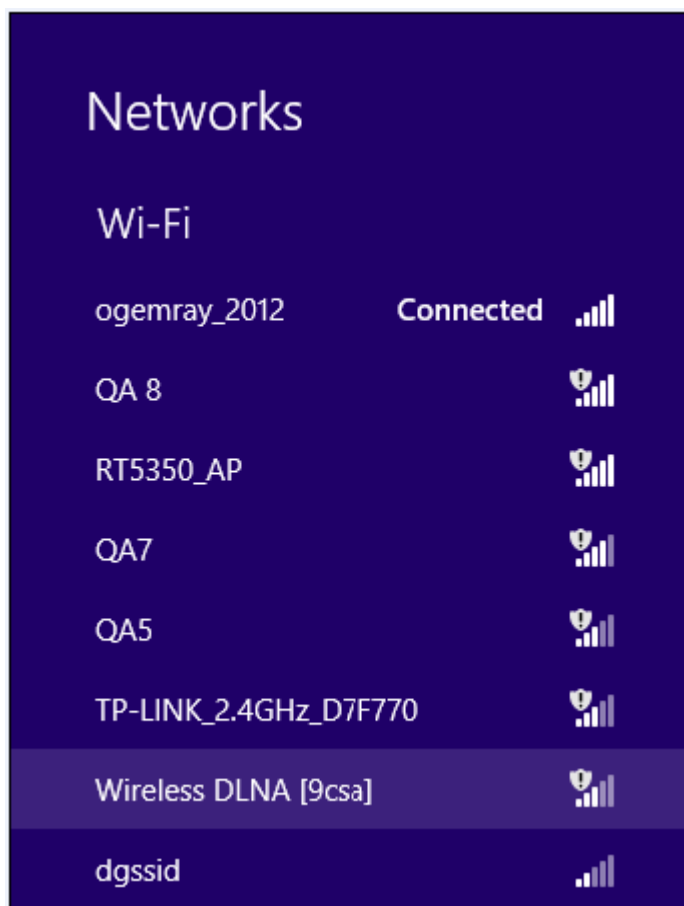
3) If your network has wireless security Configured, enter the required setting. The following is an example only, your network setting may differ.



4) You can select turn on sharing or connect to device or not.



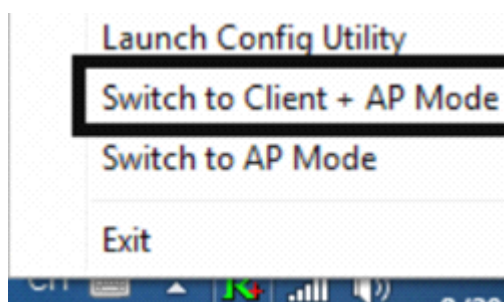
5) The success of your connection is indicated by the wireless network icon.



Notes : The steps of using the Ralink Utility to connect a wireless network is the same as those described in Windows Xp .

In addition to station and AP mode, there is the Client + AP Mode to be selected in windows 8 as well.

Which means: other wireless devices connect to -> Soft-AP of the adapter -> the adapter (Client mode with Internal ICS sharing)-> connect to other AP or router -> Internet.



This mode lets you use the adapter both as a Soft-AP and client at the same time. Switch to this mode, you can let a wireless adapter be connect to a wireless (Soft-AP) with Internet connected, and let others adapter be indirectly connect to Internet via the Soft-AP wireless network.

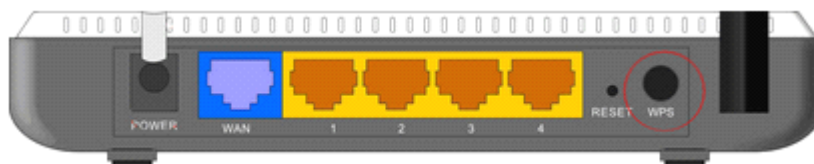
WPS SETTING

The WPS is equipped with PBC and PIN two kinds of connection mode. Make sure your router support WPS function,

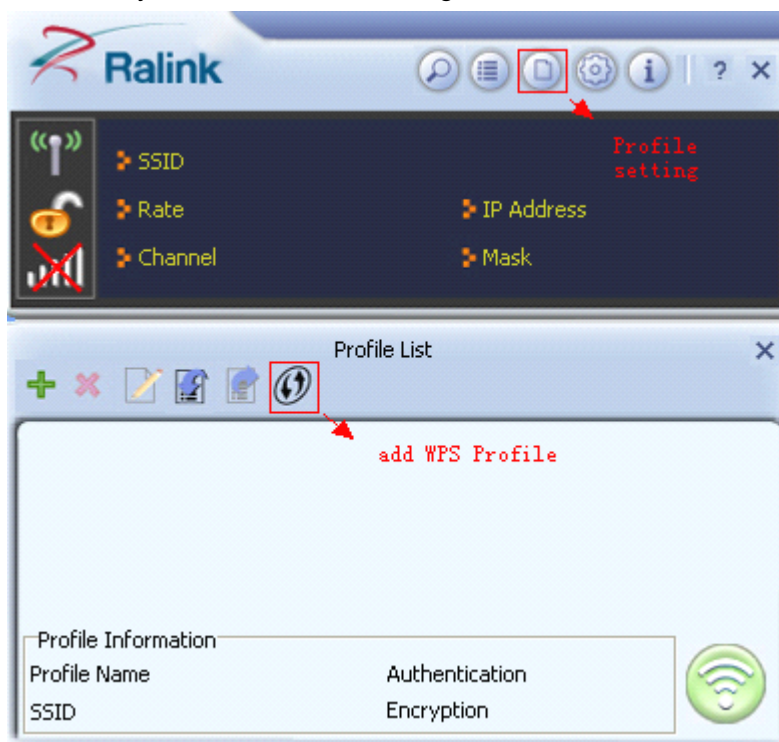
1) PBC Mode

Enables the router's PBC mode. Press the WPS button on the router about 2 seconds , When the

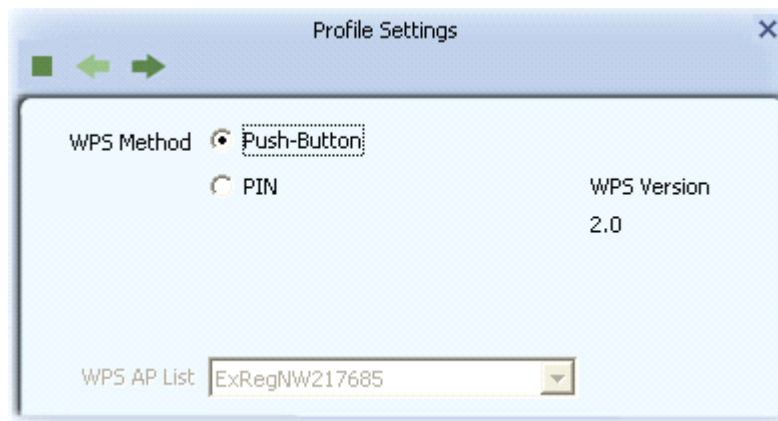
router's WPS status indicator led starts to flash that router WPS is already enabled. You can also visit the router's Web settings page to enable the PBC mode.



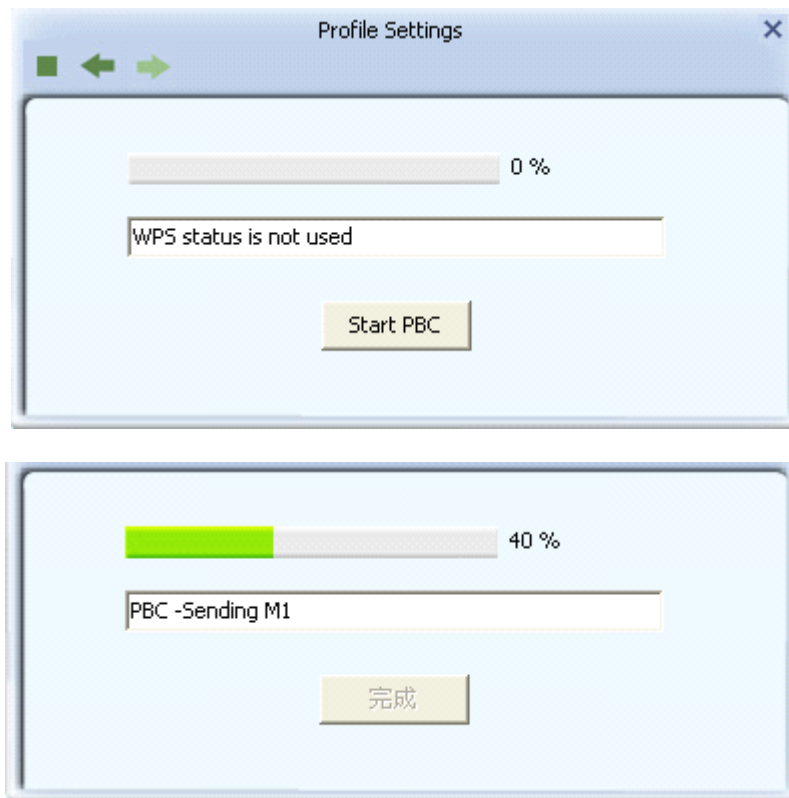
- ① Use Ralink Utility to connect.
 - a. Start-up Ralink Utility ,click the “Profile setting” icon and then select ”add WPS Profile”button.



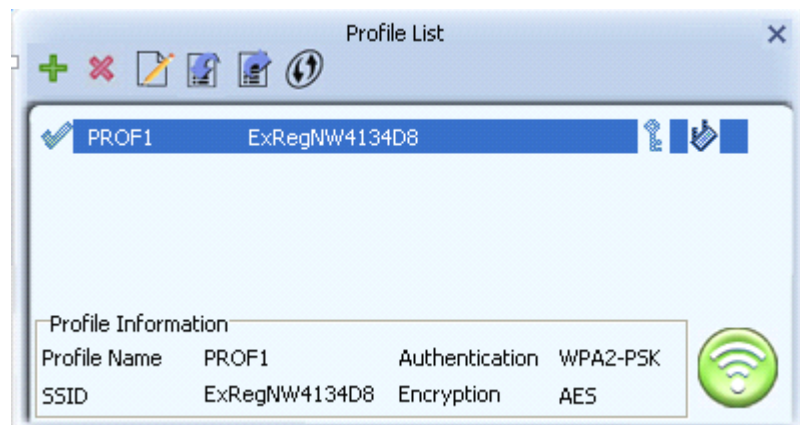
- b. Select “Push-Button” WPS Method.and then press  to next.



- c. When the router's WPS status indicator led starts to flash and then click “Start PBC”button in two minutes.



d. After a successful connection it creates a Profile.



② Use the WPS button on the wireless network adapter to connect.


a. When the router's WPS status LED indicator starts to blink and then press the WPS button on the wireless network adapter for about 3 seconds until the LED indicator of the adapter blinks..

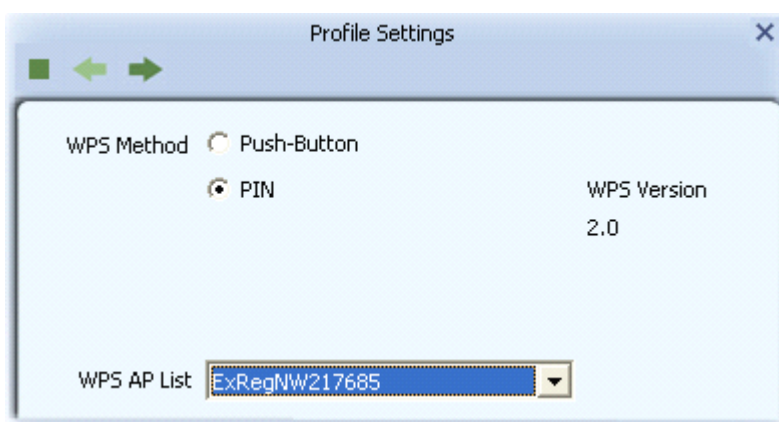
b. After about 30 seconds, the connection will be successful ,then please view the connection information on the Ralink Utility. After a successful connection,it will be randomly assigned to a AP name and password for AP.

2). PIN Mode

a. Start-up Ralink Utility ,click the "Profile setting" icon and then select "add WPS button.

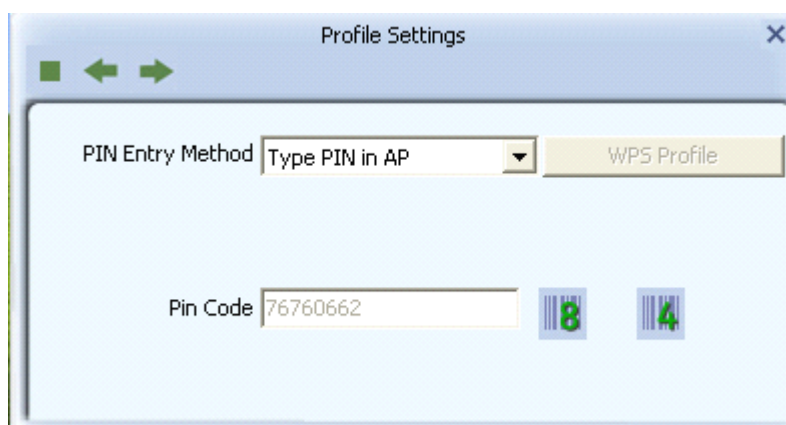


b. Select "PIN" WPS Method and then press  to next. And select the router's SSID in the WPS AP List.

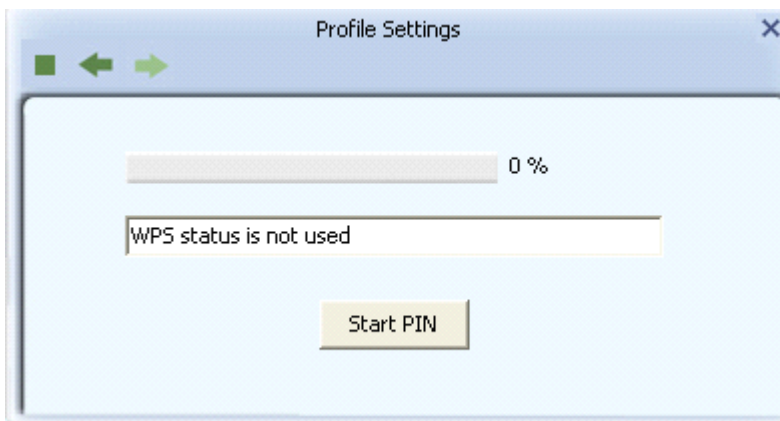


① Type PIN in AP mode

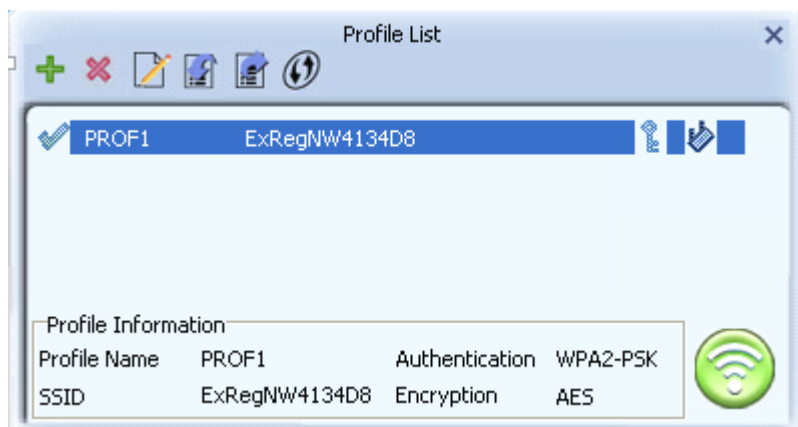
a. Select "Type PIN in AP mode" in the PIN Entry Method. And then write the Pin Code to the router's WPS Web settings page and save it.



b. Press  to next then press "Start PIN".

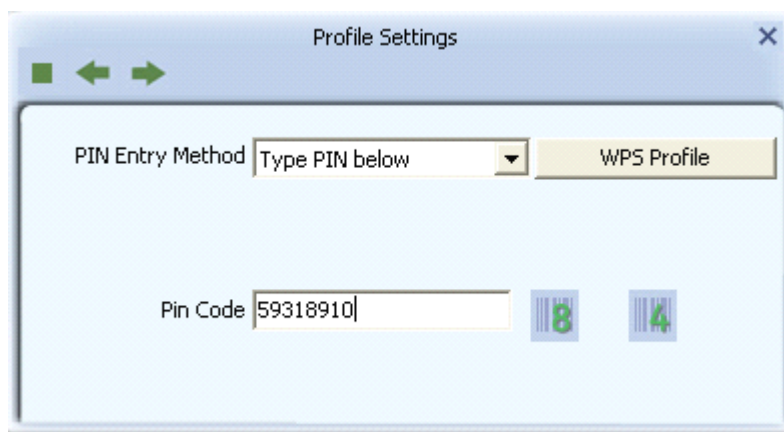


c. After a successful connection it creates a Profile.

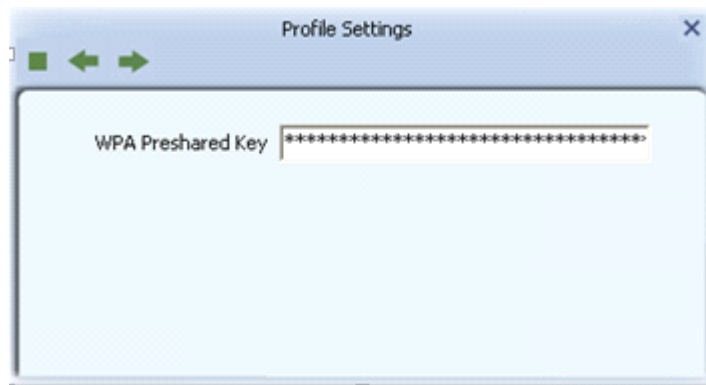
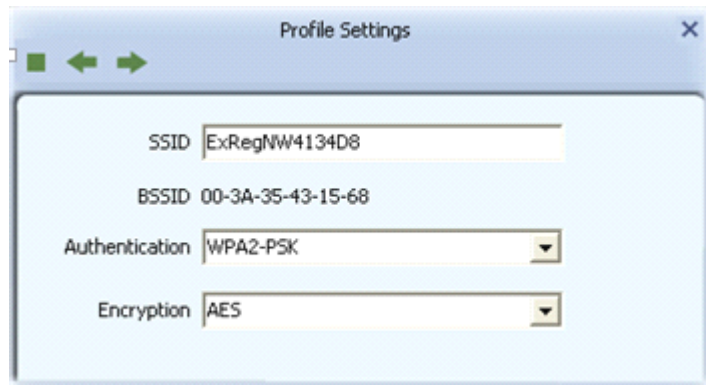



② Type PIN below mode

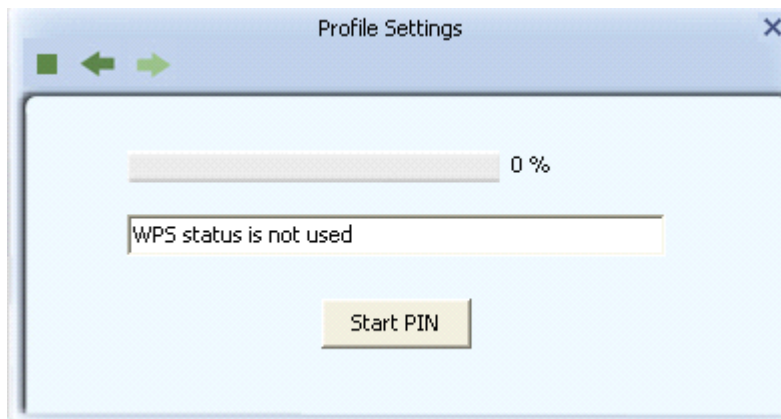
a. Select "Type below mode " in the PIN Entry Method.And write router 's PIN Code in the "Pin Code".You can view router 's PIN Code in the instructions of the router or the label on the back of the router.



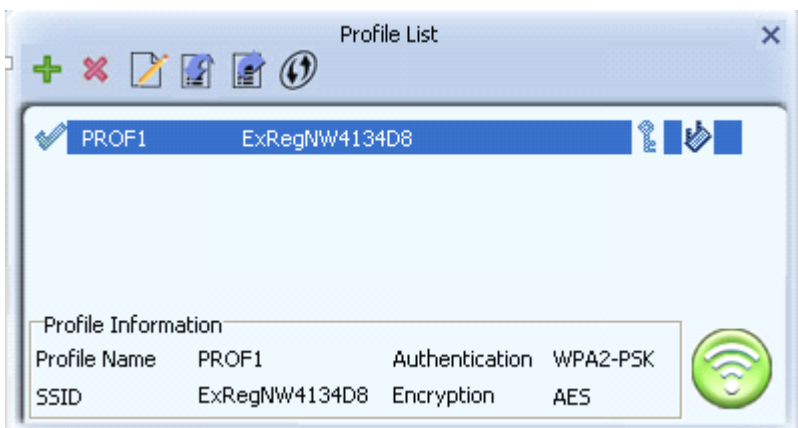
b. You can press "WPS Profile" to view WPS Profile.No change is reconmend



c. Press  to next then press "Start PIN".



d. After a successful connection it creates a Profile.



Note:

1. If there are multiple routers simultaneously open WPS function, it may cause the connection to fail.
2. When the router using WPS to connect ,you can only connect a client one time. When the router using WPS connection multiple clients, you need to repeat the WPS operation.

For more details about the RaUI utility, please read the help information of the utility by clicking the  tab



5. Tips for Wi-Fi users

With a Wi-Fi connection, you can roam about 150 m around the access point (depends on different environment), so find a spot where you can work without any interruption. Then see how much work you can do, such as:

- Easily and quickly receive and transmit files within your local network — no problem for big files.
- Access your email and surf the web with the same speed as that connected with network cables.
- Synchronize data between devices.
- Take advantage of wireless printing — send files directly from your laptop PC to a wireless printer over Wi-Fi connection.

6. Warning

Wi-Fi offers greater speed and range than Bluetooth, but it drains your portable device batteries a lot faster than Bluetooth does. In fact, if you use a Wi-Fi connection regularly on your laptop PC, you'll undoubtedly notice that you need to recharge more often. If you need to conserve battery life — on a long trip for example — turn off your Wi-Fi connection when you don't actually need it.

7. Security

Because wireless networks rely on radio signals to transmit data, they are not as secure as wire network. Wireless networks are susceptible to viruses and breaches like eavesdropping and need to be protected in order to be secure.

There are many security measures to safeguard wireless networks, protect the data, and keep unauthorized users out. Hotspots, on the other hand, are often free of standard security practices in an effort to make it easy for anyone to connect. It may be found that some pay hotspots administered by service providers offer have some level of security, however, when using a hotspot, it's always a good idea to be proactive and to employ security measures of your own.

8. Key terms

Wi-Fi: Short for “wireless fidelity,” a generic label that refers to wireless networks or networking.

Hotspot: A specific geographic location in which an access point provides public wireless broadband network services to mobile visitors through a WLAN.

Throughput: The amount of data transmitted in a set amount of time.

Bandwidth: the amount of data that can be carried from one point to another in a given time period (usually a second).

Chipset: A group of microchips that execute various functions (like memory) to support the CPU.

Tx power: The transmit power measured at the terminal without antenna be considered. Should the antenna gain be considered ,the EIRP value is mentioned.

1T1R: the stream channel. 1T1R means one transmitter and one receiver.

Single Band : Normally means 802.11b/g/n ,which one works in 2.4 GHz

9. Specifications (Typical):

Protocol and Standards	IEEE 802.11b/g or 802.11n
Interface	USB1.1, USB2.0
Frequency Band	2.412~2.4835GHz (Depends on different countries' regulation)
Data Rate	For 802.11b/g: Peak rate 54Mbps, Peak throughput: 27Mbps.
	For 802.11n 1T1R. Peak rate: 150Mbps, Peak throughput: 90Mbps
Data Security	WEP 64/128 , WPA, WPA2, 802.1X,WPS

Power Consumption	It depends on different adapter models, there are two typical values: 330mA and 110mA in full Transmit (TX), 290mA and 95mA in full Receive (RX) .
Transmission Distance	Indoor up to 100m, outdoor up to 300m (Standard transmission distance, it is affected depending on different environment).
Environment	Operating Temperature: 0°C~50°C Storage Temperature: -20~70°C Operating Humidity: 10%~90% non-condensing. Storage Humidity: 5%~95% non-condensing.
Operating System	It supports Windows CE/2000/XP/Vista/7; Linux; Mac OS X. The drivers might be supplied basing on one or two system.