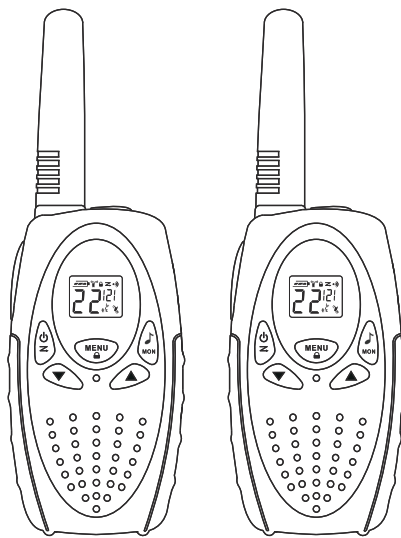

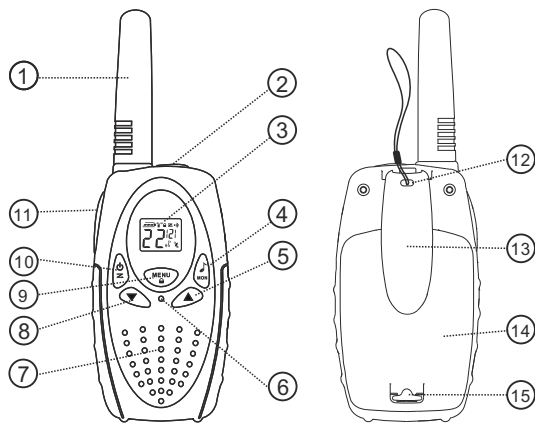


Walkie Talkie User Guide



US

 **CAUTION** Read this operating instruction carefully before using your two way radio, including the part on Product Safety and Important Notice.

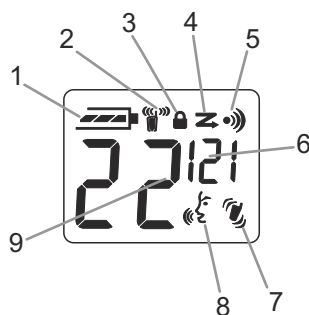


- | | |
|------------------------------------|------------------------------|
| 1. Antenna | 8. Down Button |
| 2. External Speaker/
Microphone | 9. Menu/Lock Button |
| 3. Backlit LCD Display | 10. Power /Scan Button |
| 4. Call/Monitor Button | 11. PTT(Pull to talk) Button |
| 5. Up Button | 12. Wrist Strap Connection |
| 6. Microphone | 13. Belt Clip |
| 7. Speaker | 14. Battery Compartment |
| | 15. Battery Door Latch |

Features

- 22 Channels
- 121 Privacy Codes
(38 CTCSS codes/83 DCS codes)
- Hands-Free Operation
(VOX)
- Scan Channels
- Backlit LCD Display
- Call Alert
Ten selectable tones
- Button Lock
- Speaker/Microphone/
Jack
- Roger Beep
Selectable On/Off
- Battery/Power Saver
- Keystroke Tones
- Battery Level Indicator
- Low Battery Audible Alert
- Auto Squelch
- Belt Clip

Backlit LCD Display



1. Battery Level Indicator
2. Hi/Low Power Icon
3. Lock Icon
4. Scan Icon
5. Roger Beep Icon
6. DCS/CTCSS Privacy Code Numbers
7. Transmit Icon
8. VOX Icon
9. Channel Numbers



Maximum range may vary and is based on unobstructed line-of-sight communication under ideal conditions.

Product Features

Channel	Frequency(MHz)	Channel	Frequency(MHz)
1	462.5625	12	467.6625
2	462.5875	13	467.6875
3	462.6125	14	467.7125
4	462.6375	15	462.5500
5	462.6625	16	462.5750
6	462.6875	17	462.6000
7	462.7125	18	462.6250
8	467.5625	19	462.6500
9	467.5875	20	462.6750
10	467.6125	21	462.7000
11	467.6375	22	462.7250

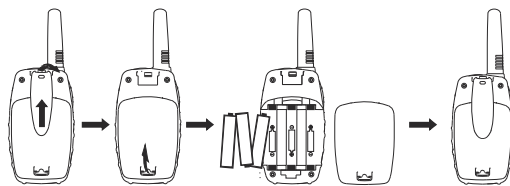
Installing Batteries

To install or replace batteries:

1. Remove the belt clip by pulling the tab and sliding it up.
2. Pull the battery door lock tab up to release the battery cover. Insert 3 "AA" batteries.
3. Put the battery cover back into place. Snap the lock tab and belt clip back into place.



1. Do not mix old and new batteries
2. Do not mix alkaline, standard (carbon-zinc) or rechargeable (nickel-cadmium) batteries.





Quick Start

1. Press and hold the Power/Scan button to turn on your radio.
2. Press the Menu, Press the Up or Down button to select a channel.



Both radios must be tuned to the same channel/privacy code to communicate.

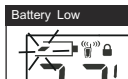
3. Press and hold the PTT button while speaking into the microphone.
4. When finished talking, release the PTT button and listen for a response.

Turning on Your Radio



Press and hold the Power/Scan button until you hear a series of audible tones indicating the radio is on. Your radio is now in Standby mode, ready to receive transmissions. The radio is always in Standby mode except when the Talk, Call or Menu/Lock buttons are pressed.

Battery Low



When battery power is low, the final bar in the Battery Low icon will blink and an audible tone will sound twice before the radio shuts off. Your batteries should be replaced or recharged, if using rechargeable batteries.



The radio will display flashing battery icon while charging.

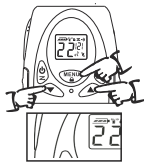
Auto Battery Save

If there are no transmissions within 10 seconds, the radio will automatically switch to Battery Save mode and the Power Saver icon will flash in the display. This will not affect the radio's ability to receive incoming transmissions.

Communicating with Another Person

1. Press and hold the PTT button.
2. With the microphone about two inches (2.5-5 cm) from your mouth, speak in a normal voice.
3. Release the PTT button when you are finished talking and listen for a response. You cannot receive incoming calls while pressing the PTT button. Both radios must be tuned to the same channel/privacy code to communicate.

To Select a Channel



With the radio on, select any of the 22 channels by pressing Menu and the Up or Down button. Both radios must be tuned to the same channel to communicate.

Listening for a Response

Release the PTT button to receive incoming transmissions. Your radio is always in Standby mode while the Talk or Call buttons are not pressed.

To Adjust Volume



The radio is in Standby mode. Press the Up button to increase the speaker volume. Press the Down button to decrease the speaker volume. The speaker volume level is indicated by the numbers 1-8 displayed.

Call Button



Press and release the Call button. The other person will hear a two second call tone. This tone is used only to establish voice communications. See page 7 on how to select between ten call tone settings.

Lock Function



The Lock function locks the Up, Down and Menu buttons to prevent accidental operation. To turn the lock on or off:

- 1 Press and hold the Menu/Lock button for three seconds.

A double beep sound is used to confirm your lock on or off request. When in Lock mode, the Lock icon will be displayed.

Scrolling Through the Menu Function

By scrolling through the MENU function, you will be able to select or turn on preferred features of your radio. When scrolling through the Menu function, your radio features will be displayed in the same predetermined order:



- Set Channels
- Set CTCSS/DCS Privacy Codes
- Set Call Tones 1-10
- Set Vox Sensitivity 1-3 and Vox Off
- Set Double channel monitor
- Set SQUELCH Level 1-6
- Set TX POWER LOW/HI

Privacy Codes

Your radio incorporates two advanced coded squelch systems that can help to reduce interference from other users on any given channel. CTCSS (Continuous Tone Coded Squelch System) provides 38 privacy codes and DCS (Digitally Coded Squelch) provides 83 privacy codes. This provides a total of 121 Privacy Codes. Either system can be used on all channels, but both systems

To successfully communicate using a privacy code, both the sending and receiving radios must be tuned to the same channel and to the same privacy code system (CTCSS or DCS) and privacy code number. Each channel will remember the last privacy code system and number you select. The privacy code 00 is not a privacy code, but allows all signals to be heard on a channel that is set to 00 on both the CTCSS and DCS systems.

Set CTCSS/DCS Privacy Codes



To select a CTCSS/DCS privacy code:

1. After selecting a channel, press the Menu/Lock button until the small numbers next to the channel number flash on the display.
2. Press using the Up or Down button to select a privacy code. You can hold the Up or Down button for fast advance.
3. When your desired CTCSS/DCS privacy code is displayed (CTCSS:01 through 38, DCS:39 through 121), choose one of the following:
 - a. Press the Menu/Power button to enter the new setting and proceed to other functions.
 - b. Press PTT button to enter the new setting and return to Standby mode.

Ten Call Tone Settings



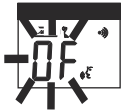
You can choose between ten different Call Tone Settings to transmit a call alert.

To change a call tone setting:

1. Press the Menu/Lock button until the letter "CA" and the current call tone number (01 through 10) is displayed. The current call tone will sound for three seconds.
2. Press the Up or Down button to hear the other call tone settings.
3. Choose one of the following:
 - a. Press the Menu/Lock button to enter the new setting and proceed to other functions.
 - b. Press PTT button to enter the new setting and return to Standby mode.

Voice Activated Transmit (VOX)

In VOX mode, your radio can be used "hands-free," automatically transmitting when you speak. You can set the VOX sensitivity level to fit the volume of your voice and avoid transmissions triggered by background noise.



The current VOX sensitivity level is displayed with letters "VOX" and a Number 1 through 3, with Number 3 being the most sensitive level and Number 1 being the least sensitive level.

2. Press the Up or Down button to change the setting.
3. Choose one of the following:
 - a. Press the Menu/Lock button to enter the new setting and proceed to other functions.
 - b. Press PTT button to enter the new setting and return to Standby mode.

To turn VOX mode off:

1. Press the Menu/Lock button until the VOX icon on the display.
2. Press the Up or Down button to turn VOX Off. The current "Of" setting is displayed.
3. Choose one of the following:
 - a. Press the Menu/Lock button to enter the new setting and proceed to other functions.
 - b. Press PTT button to enter the new setting and return to Standby mode.

Dual Channel Monitor function

In stand-by, the Radio is set on one channel with CTCSS/DCS code. The Radio will only receive signals transmitted on that channel with the CTCSS/DCS code.

Dual Channel Monitor (DCM) allows you to monitor a second channel.

1. Press the Menu/Lock button five times until CH displays, the current channel flashes.
2. Press the UP or DOWN button to set the monitor channel.
3. Press the PTT button to save the double channel monitor setting.

Setting the SQUELCH Level 1-6

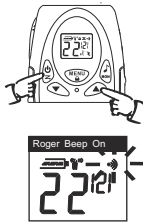
1. Press the Menu/Lock button six times or until SL displays.
2. Press the UP or DOWN button to select the receive sensitivity level.
 - 01 = High receive Sensitivity
 - 02-05 = Medium receive Sensitivity
 - 06 = Low receive Sensitivity.
3. Press the PTT button to save the SQUELCH Level setting.

Setting the TX POWER LOW/HI

1. Press the Menu/Lock button seven times until pr displays.
2. Press the UP or DOWN button to select the Lo or HI level.
3. Press the PTT button to save the TX POWER LOW/HI setting.

Roger Beep Confirmation Tone

Your listener will hear an audible tone when you release the PTT button. This alerts the other party that you are finished talking and it is OK for them to speak.



To turn roger beep off:

1. Press and hold the Power button turn the radio off.
2. Press and hold the Power+Up button at the same time until the Roger Beep icon not displayed.

To turn roger beep on :

1. Press and hold the Power button turn the radio off.
2. Press and hold the Power+Up button at the same time until the Roger Beep icon " " " " displayed.

Key Tone On/Off

When Key Tone is On, an audible tone will sound each time a button is pressed.



To turn key tone off:

1. Press and hold the Power button turn the radio off.
2. Press and hold the Power+down button at the same time to turn the Radio on.

To turn key tone on on :

1. Press and hold the Power button turn the radio off.
2. Press and hold the Power+down button at the same time to turn the Radio on.

Channel Scan

Your radio can automatically scan channels.

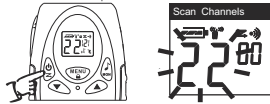
To scan channels:

1. Press and release the Scan button until the Scan icon and the channel numbers appear on the display.
 2. Press and hold the Scan button to begin scanning channels.
- The radio ignores specific privacy codes while scanning channels. The Scan icon will continue to be displayed when scan is on. Your

radio will continue to scan all channels and stop if an incoming transmission is detected. Your radio will remain on that channel for 10 seconds.

During scanning (while receiving an incoming transmission), you can choose from the following:

- a. Press and hold the PTT button to communicate on that channel. Your radio will remain on that channel and return to Standby mode.
- b. Press the Up or Down button to resume scanning channels.
- c. Press and hold the Scan button to return to Standby.



FCC Statement

This equipment has been tested and found to comply with the limits for Part 15 of the FCC rules. These limits are designed to provide reasonable protection against harmful interference in a residential installation. This equipment generates, uses and can radiate radio frequency energy and, if not installed and used in accordance with the instructions, may cause harmful interference to radio communications. However, there is no guarantee that interference will not occur in a particular installation. If this equipment does cause harmful interference to radio or television reception, which can be determined by turning the equipment off and on, the user is encouraged to try to correct the interference by one or more of the following measures:

- Reorient or relocate the receiving antenna.
- Increase the separation between the equipment and receiver.
- Connect the equipment to an outlet on a circuit different from that to which the receiver is connected.
- Consult the dealer or an experienced radio/TV technician for help.

Any changes or modifications not expressly approved by the party responsible for compliance could void the user's authority to operate the equipment.

This device complies with part 15 of the FCC Rules. Operation is subject to the condition that this device does not cause harmful interference.

RF Exposure Warning

This equipment must be installed and operated in accordance with provided instructions and must not be co-located or operating in conjunction with any other antenna or transmitter. End-users and installers must be provided with antenna installation instructions and transmitter operating conditions for satisfying RF exposure compliance. The SAR limit adopted by US is 1.6 W/kg averaged over 1 grams of tissue. The highest SAR value for this device type when properly worn on the body is 0.6 W/kg.