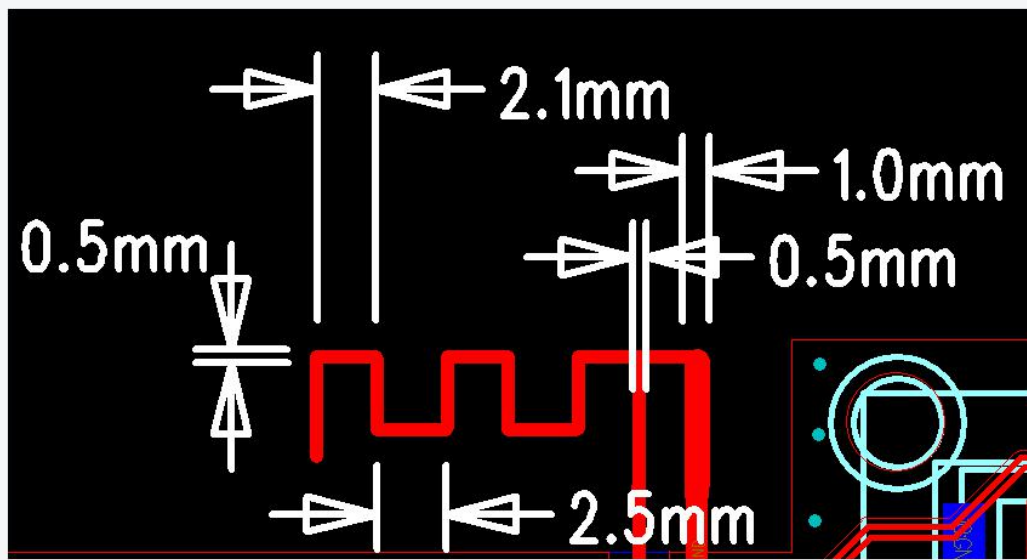


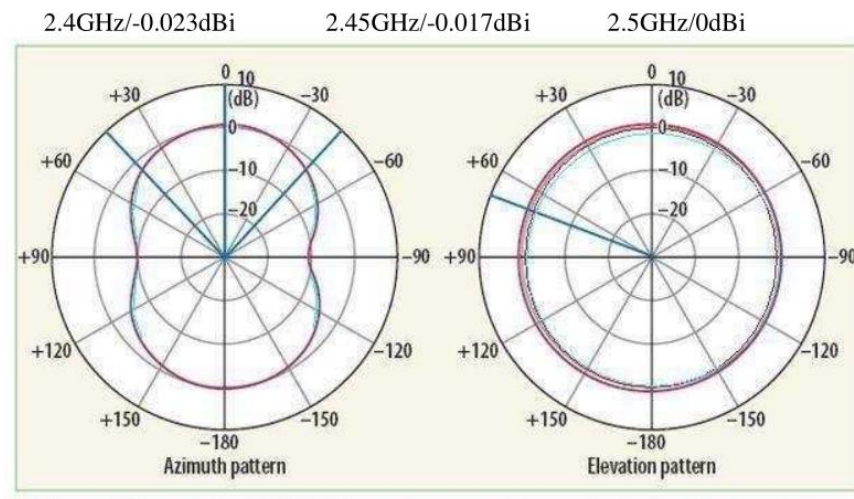
Specification: 2.4GHz, 0dBi max. L=34.3mm



RF Antenna Assembly

SPEC: 2.4~2.5GHz

H Plane



Caution:

This is a PCB printed antenna, since metal will attenuate the signal of antenna, grounded and wiring on the bottom of the antenna PCB are

OTA有源3D苹果图

