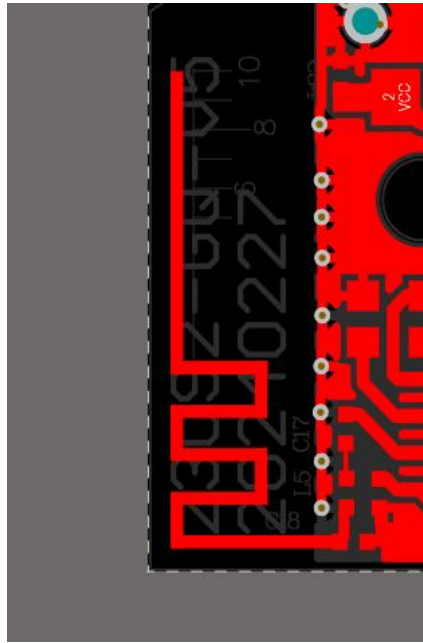


Antenna Specification

1. Only radiated measurements are used to show compliance with FCC limits for fundamental and spurious emissions.

2. Mode name: PCB Antenna

3. Photo



4. Size: Length 16.5mm, Diameter 0.5mm

2.4GHz Antenna			
Frequency (MHz)	Efficiency (dB)	Efficiency (%)	Gain (dBi)
2403	-2.72	31.81	-1.08
2412	-2.49	33.46	-0.88
2420	-2.27	34.94	-0.79
2430	-1.97	37.41	0.57
2435	-1.87	38.25	0.57
2437	-1.80	38.87	0.64
2440	-1.78	39.97	0.78
2441	-1.75	40.30	0.81
2442	-1.72	40.53	0.82
2445	-1.66	41.07	0.84
2450	-1.55	42.13	0.94
2455	-1.40	43.68	1.07
2462	-1.26	45.06	0.97
2465	-1.20	45.71	1.09
2472	-1.09	46.84	1.07
2475	-1.07	47.20	0.97
2480	-0.80	48.22	1.13