

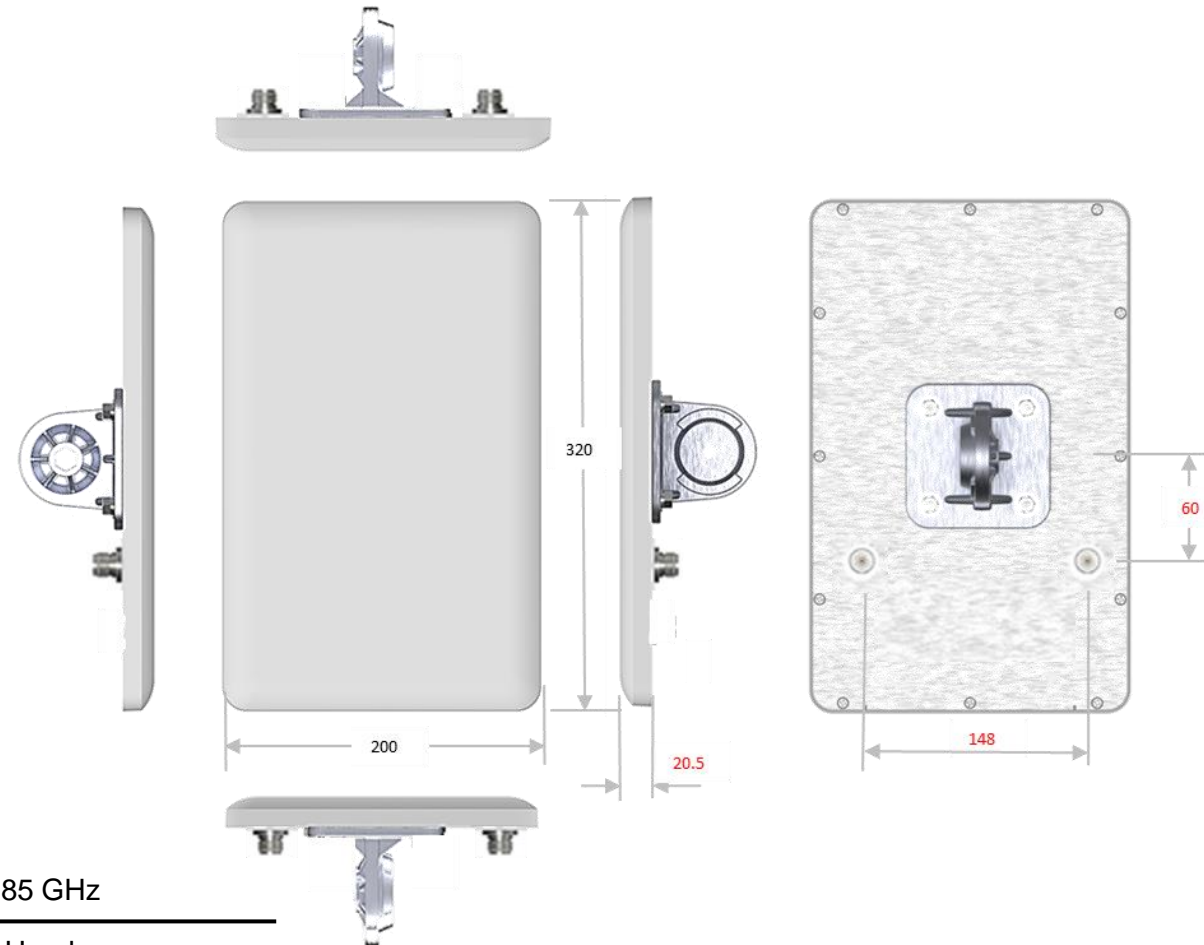
Dual-Band Dual-pol Directional Antenna

ANTENNA DIM: 320*200*20.5(mm)

DA-DB-11-01-DL-ED

RF Specifications

- Frequency Range: 2.4~2.5GHz/5.15~5.85GHz
- Polarization: Linear; Vertical /Horizontal
- VSWR: 2.0:1; max.
- Isolation: 20dB/20dB
- Power Handling: 2W (cw)
- Impedance: 50 Ohms
- Connector: N Jack
- Dimensions: 320*200*20.5(mm)



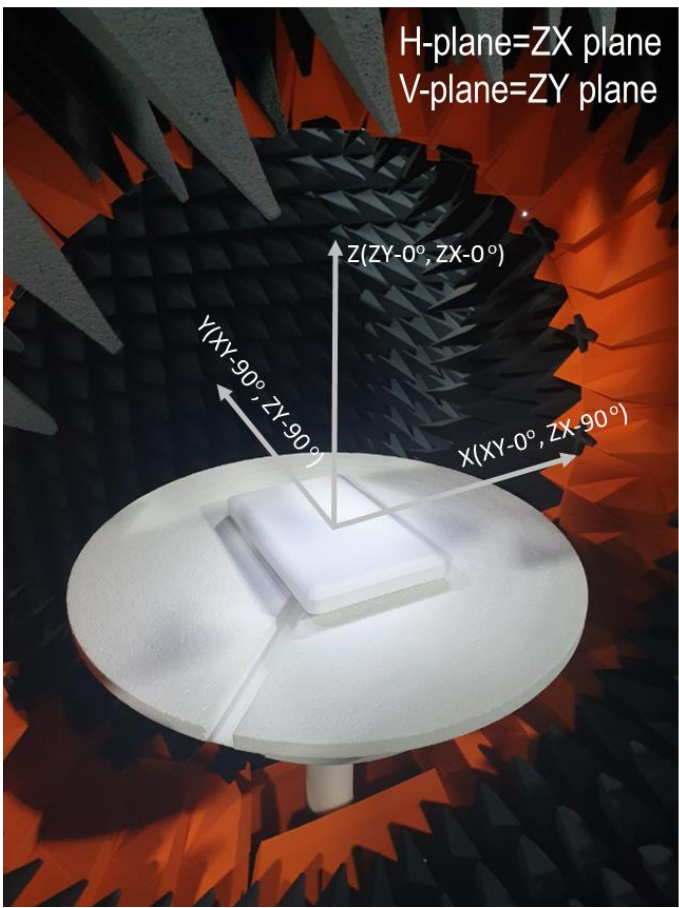
• Frequency	2.4 ~ 2.5 GHz	5.15 ~ 5.85 GHz
• Port	V-pol. / H-pol.	V-pol. / H-pol.
• Gain(Typ.)	11.6~11.8 / 11.6~12.0 dBi	10.6~11.0 / 10.4~11.5 dBi
• HPBW /Horizontal plane	36~37° / 35~36°	33~35° / 26~36°
• HPBW /Vertical plane	34~35° / 36~38°	32~39° / 30~41°
• Isolation between ports	20 dB	20 dB

Dual-Band Dual-pol Directional Antenna

ANTENNA DIM: 320*200*20.5(mm)

DA-DB-11-01-DL-ED

V-Pol Pattern

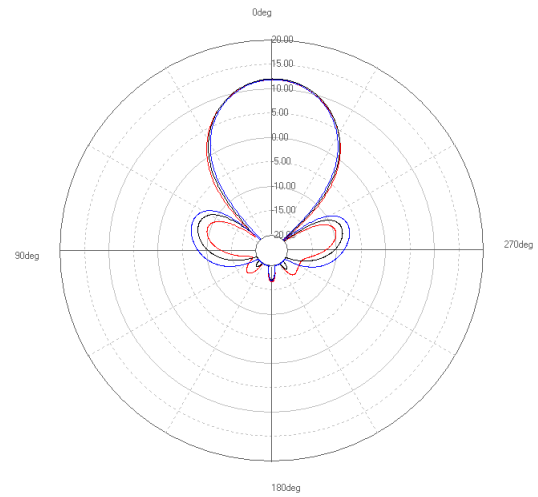


H-plane=ZX plane
V-plane=ZY plane

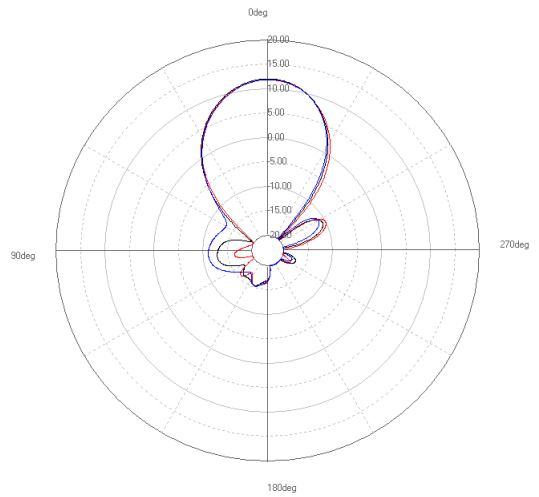
Legend
 — 2400(MHz)
 — 2450(MHz)
 — 2500(MHz)

Legend
 — 5150(MHz)
 — 5325(MHz)
 — 5500(MHz)
 — 5675(MHz)
 — 5850(MHz)

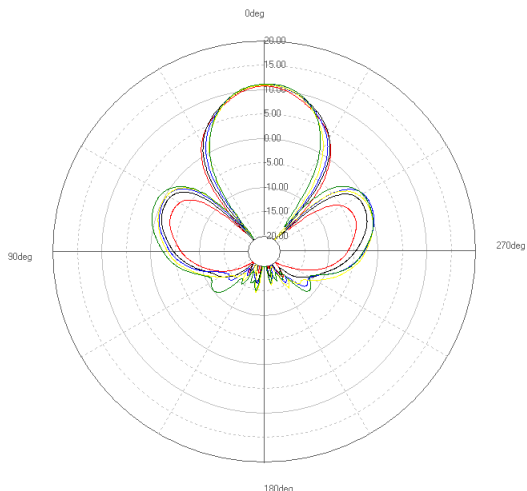
H-plane



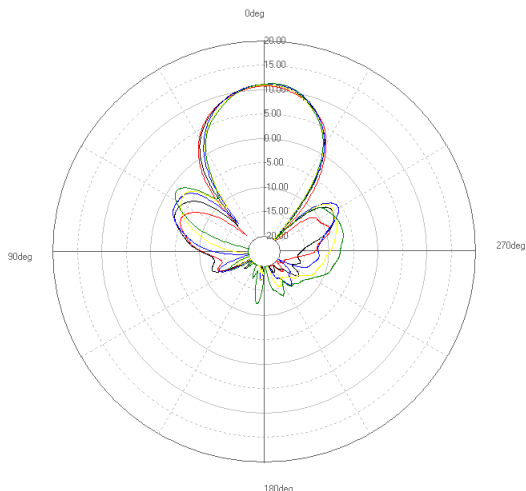
V-plane



H-plane



V-plane

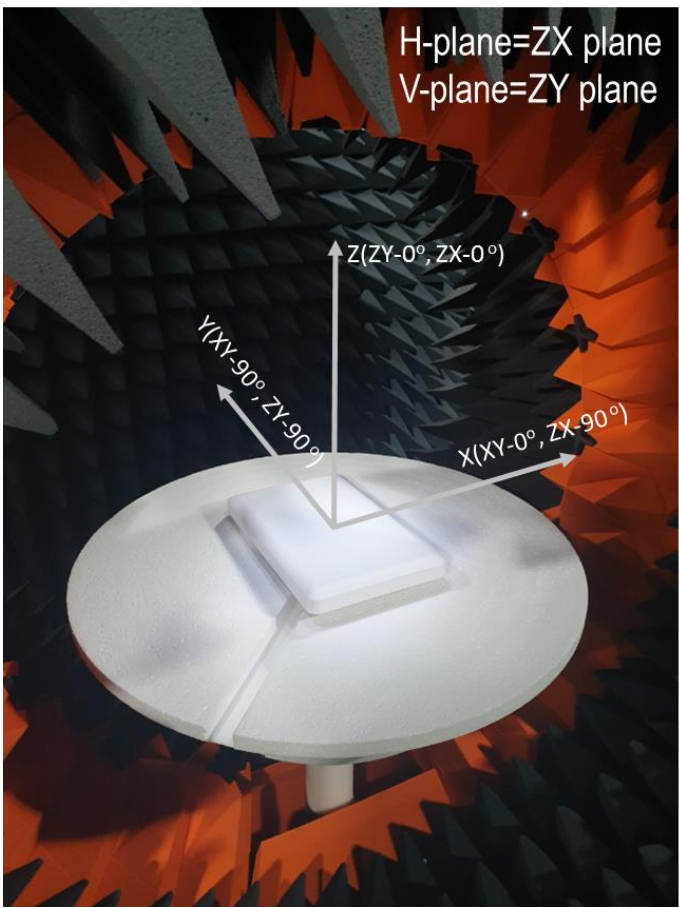


Dual-Band Dual-pol Directional Antenna

ANTENNA DIM: 320*200*20.5(mm)

DA-DB-11-01-DL-ED

H-Pol Pattern

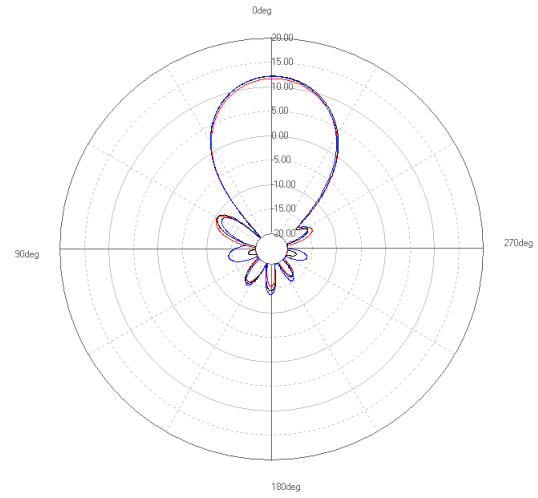


H-plane=ZX plane
V-plane=ZY plane

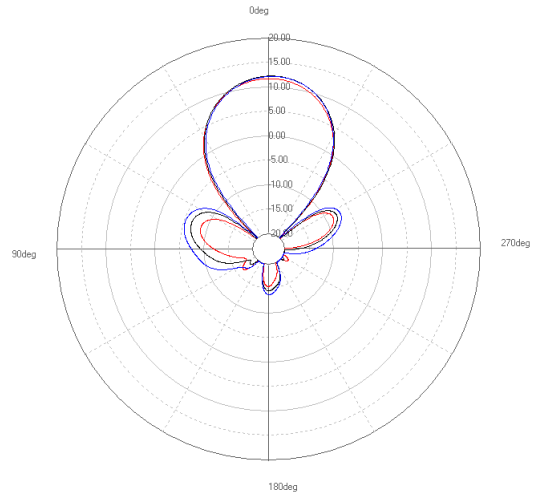
Legend
 — 2400(MHz)
 — 2450(MHz)
 — 2500(MHz)

Legend
 — 5150(MHz)
 — 5325(MHz)
 — 5500(MHz)
 — 5675(MHz)
 — 5850(MHz)

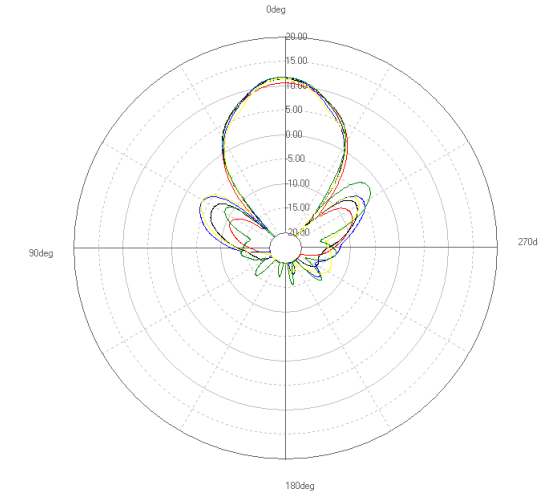
H-plane



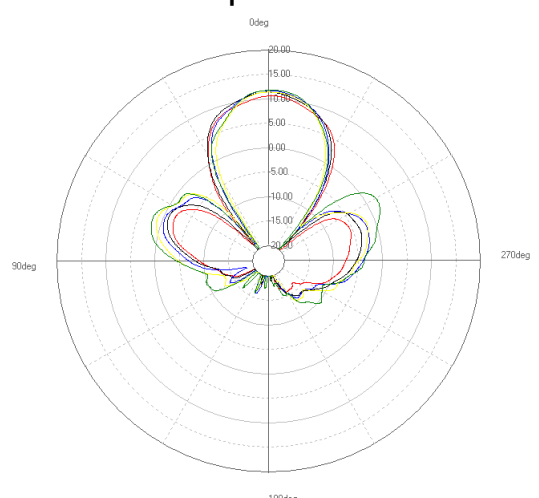
V-plane



H-plane



V-plane



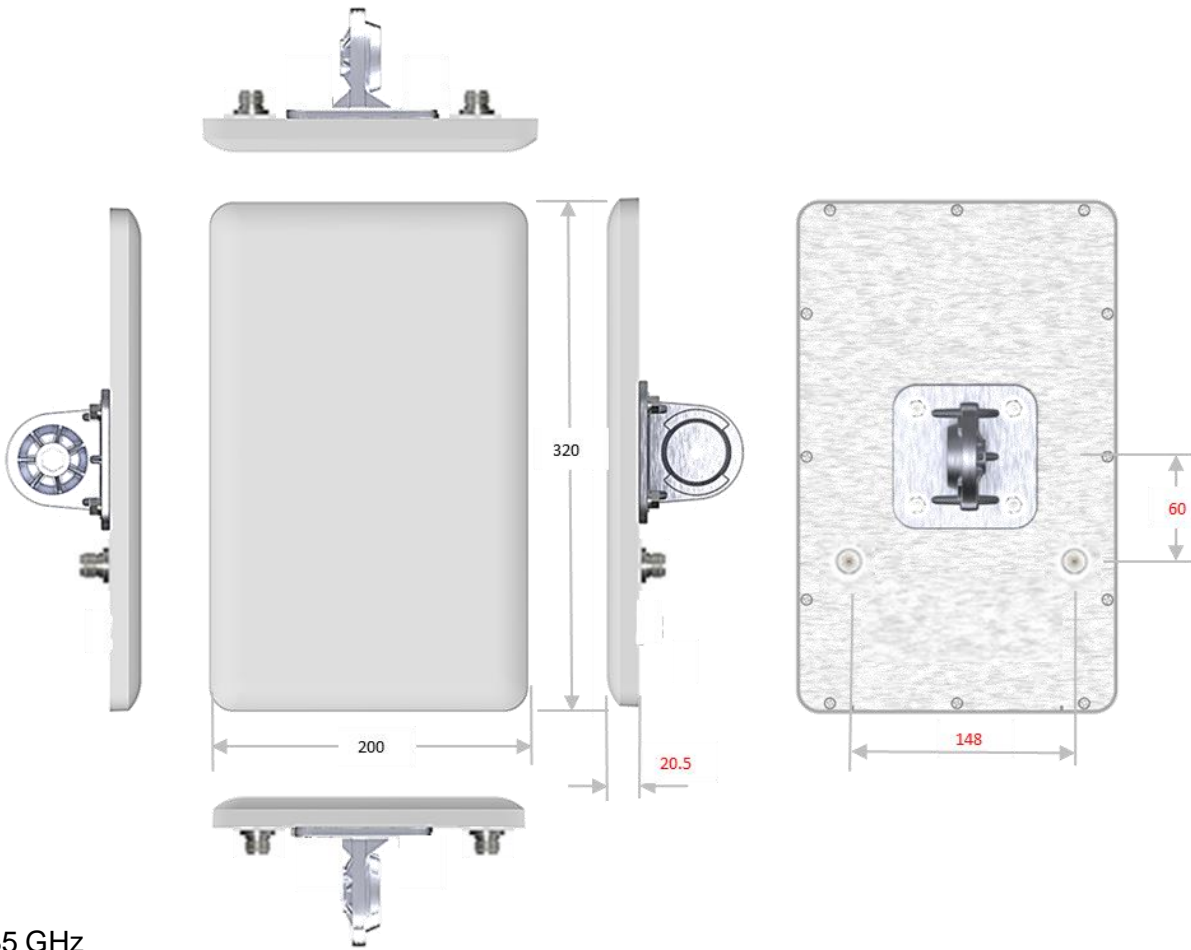
Dual-Band Dual-pol **Sector** Antenna

ANTENNA DIM: 320*200*20.5(mm)

DA-DB-11-01-ST-ED

RF Specifications

- Frequency Range: 2.4~2.5GHz/5.15~5.85GHz
- Polarization: Linear; Vertical /Horizontal
- VSWR: 2.0:1; max.
- Isolation: 20dB/20dB
- Power Handling: 2W (cw)
- Impedance: 50 Ohms
- Connector: N Jack
- Dimensions: 320*200*20.5(mm)



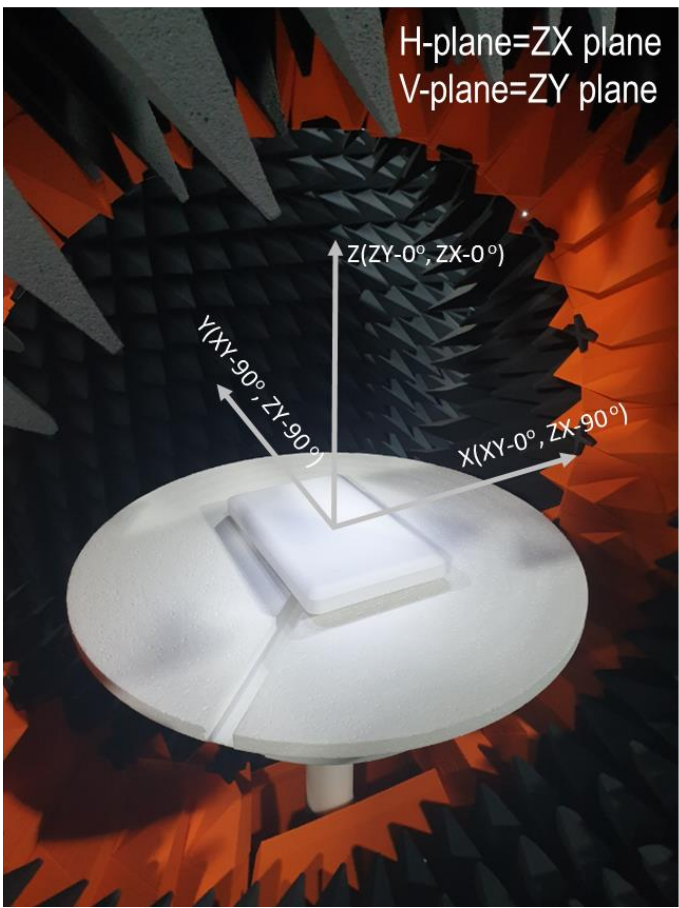
• Frequency	2.4~2.5 GHz	5.15~5.85 GHz
• Port	V-pol. / H-pol.	V-pol. / H-pol.
• Gain(Typ.)	10.6~10.8 dBi / 10.0~11.4 dBi	12.5~13.1 dBi/ 11.6~12.9 dBi
• HPBW /Horizontal plane	76~77° / 63~68°	40~61° / 52~76°
• HPBW /Vertical plane	24~25° / 26~28°	11~13° / 11~13°
• Isolation between ports	20 dB	20 dB

Dual-Band Dual-pol Sector Antenna

ANTENNA DIM: 320*200*20.5(mm)

DA-DB-11-01-ST-ED

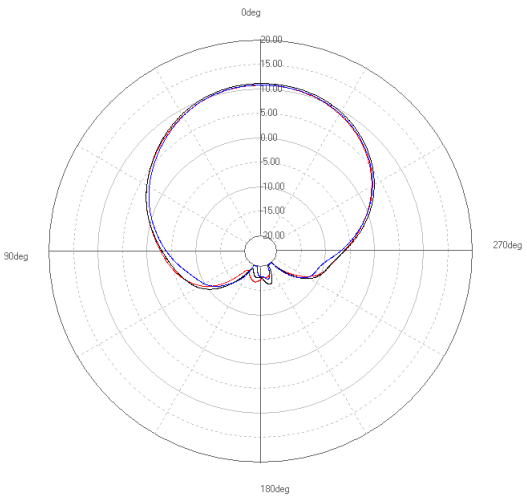
V-Pol Pattern



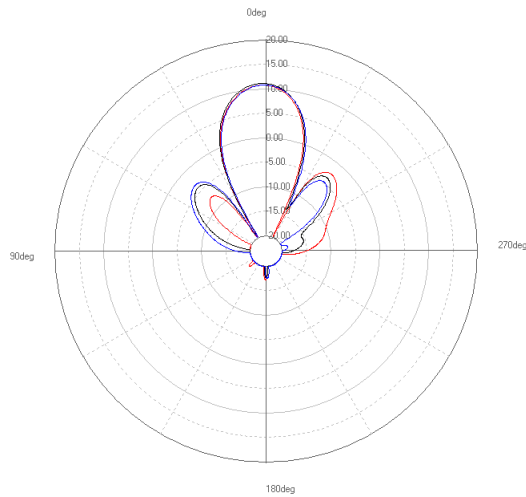
- Legend
- 2400(MHz)
 - 2450(MHz)
 - 2500(MHz)

- Legend
- 5150(MHz)
 - 5325(MHz)
 - 5500(MHz)
 - 5675(MHz)
 - 5850(MHz)

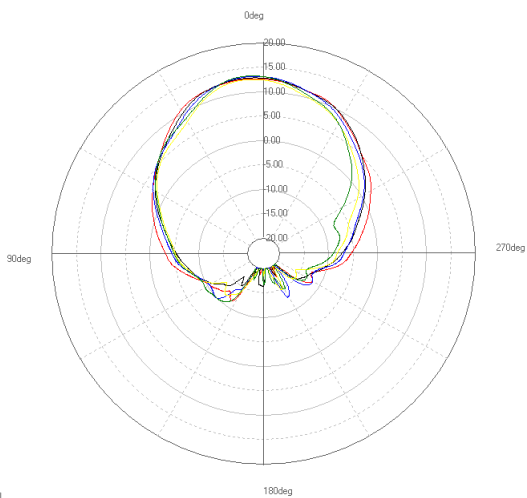
H-plane



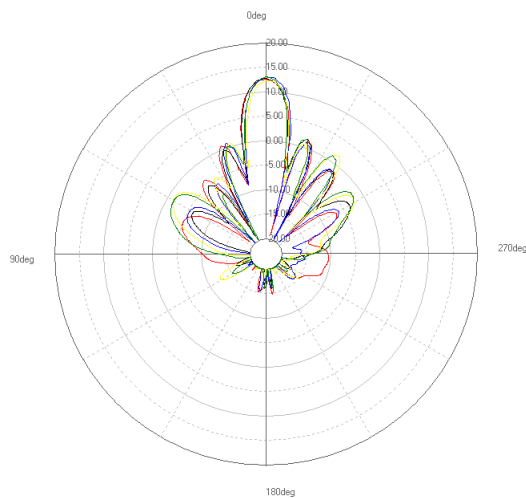
V-plane



H-plane



V-plane



Dual-Band Dual-pol Sector Antenna

ANTENNA DIM: 320*200*20.5(mm)

DA-DB-11-01-ST-ED

H-Pol Pattern

