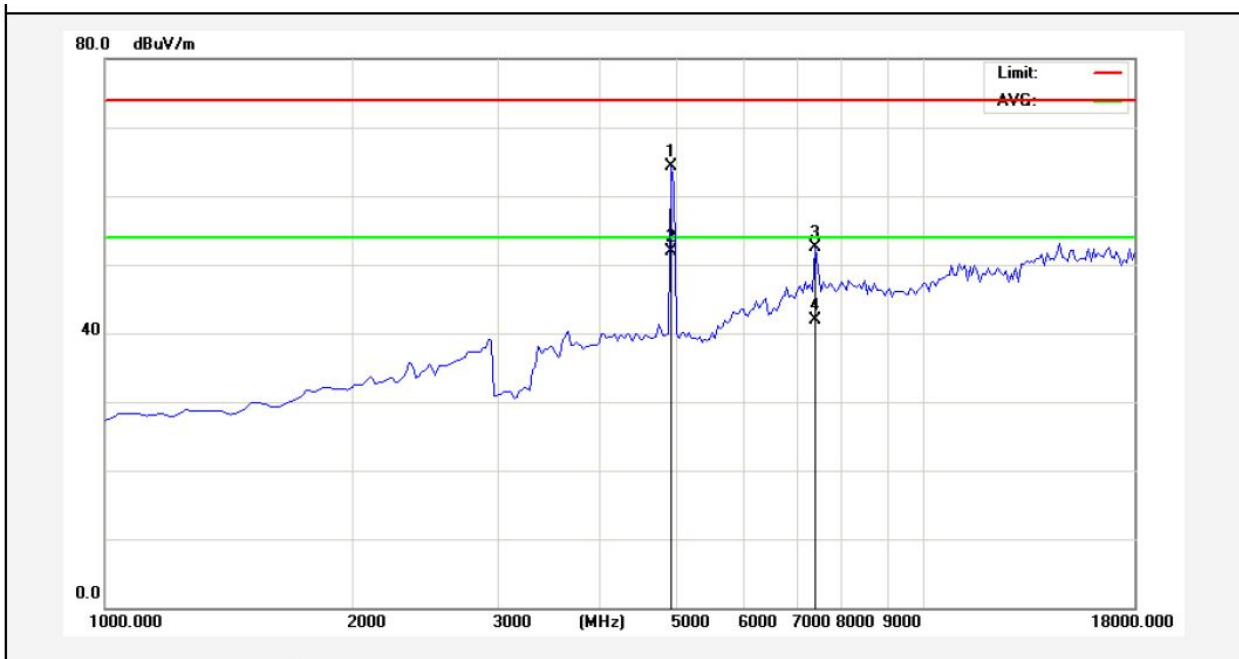


Job No.:	011503376E	Polarization:	Vertical
Standard:	(RE)FCC PART15 C_3m	Power Source:	AC 120V/60Hz for adapter
Test item:	Radiation Test	Temp.(C)/Hum.(%RH):	24.3(C)/55% RH
Note:	802.11b(2462MHz)	Distance:	3m



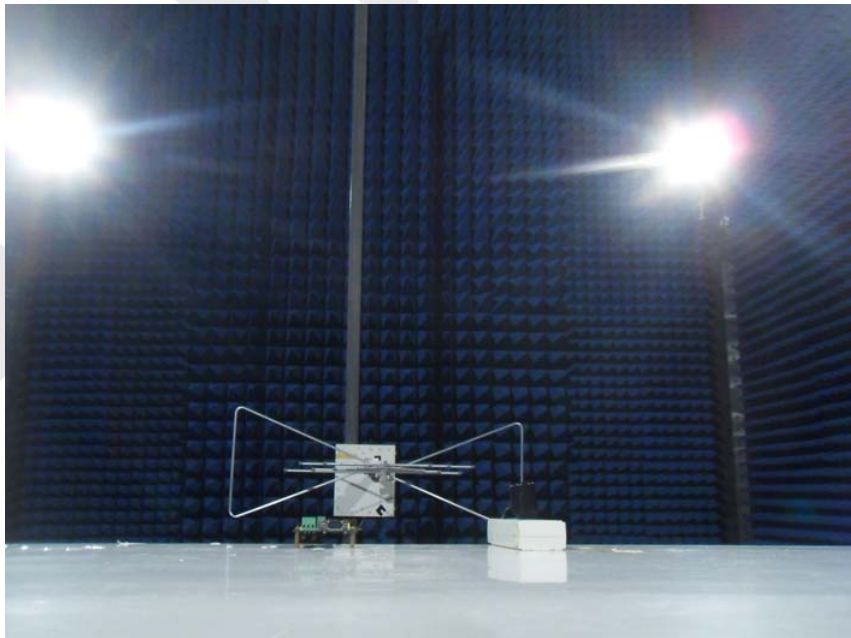
No.	Freq. (MHz)	Reading (dBuV/m)	Factor (dB/m)	Result (dBuV/m)	Limit (dBuV/)	Over Limit (dB)	Detector	Height (cm)	degree (deg)	Remark
1	4910.000	60.86	3.49	64.35	74.00	-9.65	peak			
2	4910.000	48.49	3.49	51.98	54.00	-2.02	AVG			
3	7375.000	43.96	8.63	52.59	74.00	-21.41	peak			
4	7375.000	33.21	8.63	41.84	54.00	-12.16	AVG			

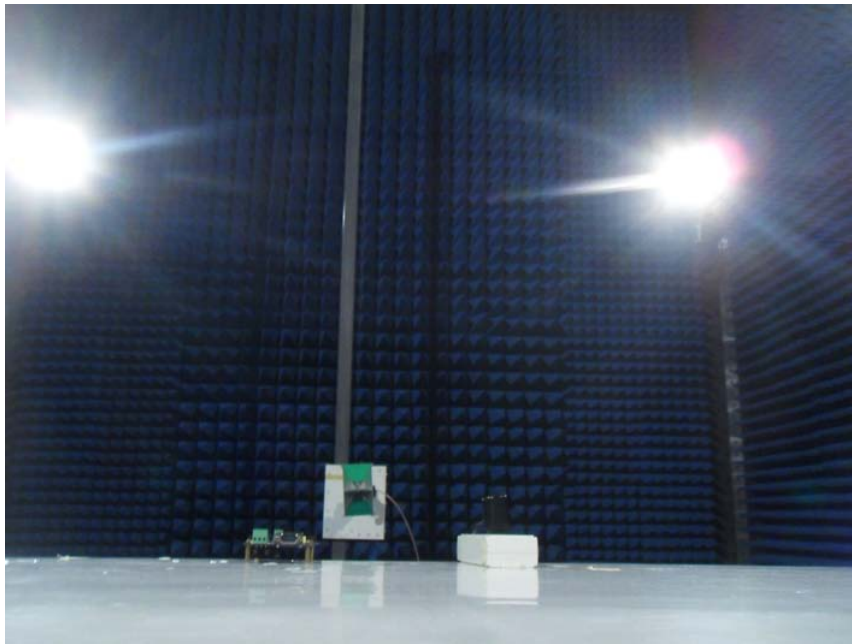
## 5. PHOTOGRAPH

### 5.1. Photo of Conducted Emission Measurement



### 5.2. Photo of Radiation Emission Test





Anbotek

## APPENDIX I (EXTERNAL PHOTOS)

Figure 1  
The EUT-Front View

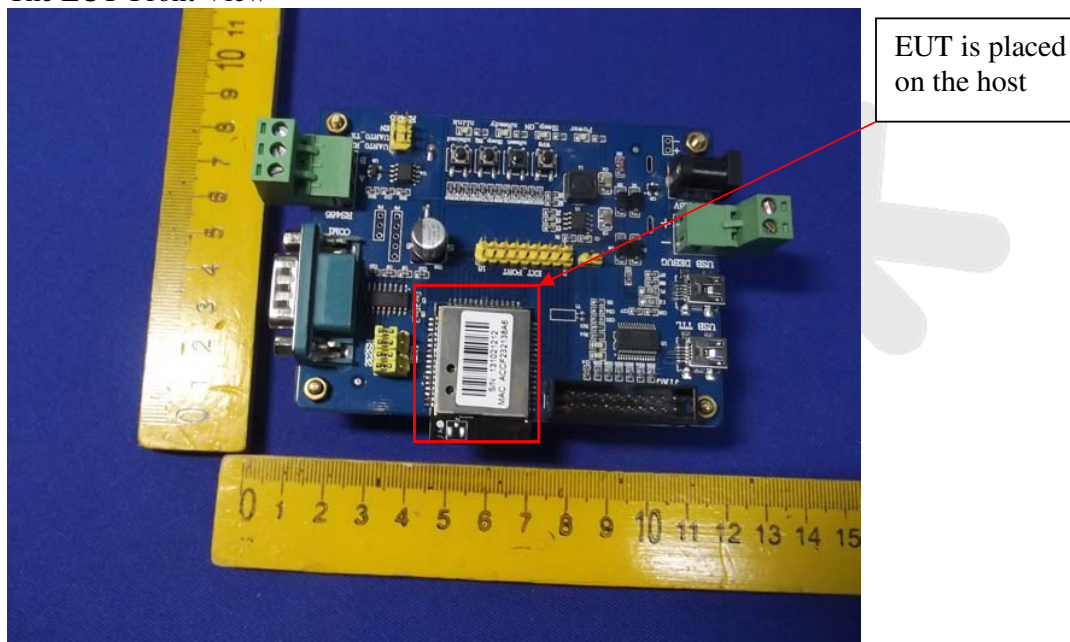


Figure 2  
The EUT-Back View

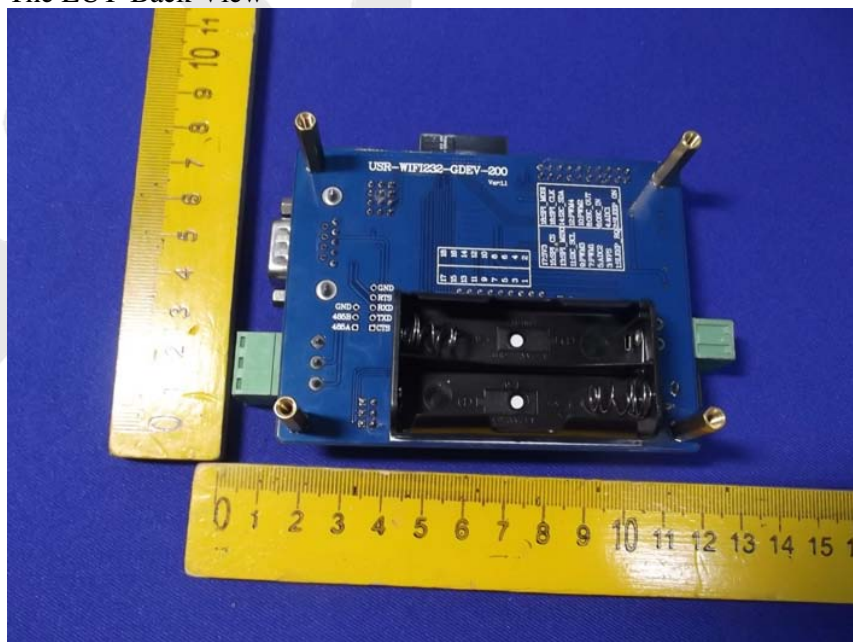
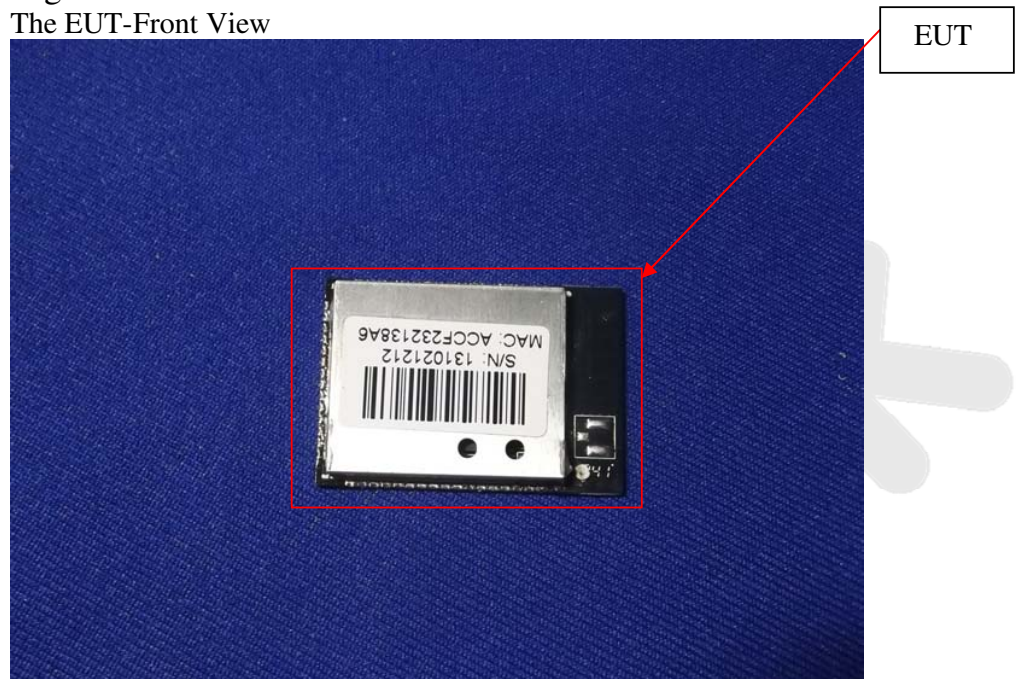




Figure 3  
The EUT-Front View



Anbotek

## APPENDIX II (INTERNAL PHOTOS)

Figure 4  
The EUT-Inside View

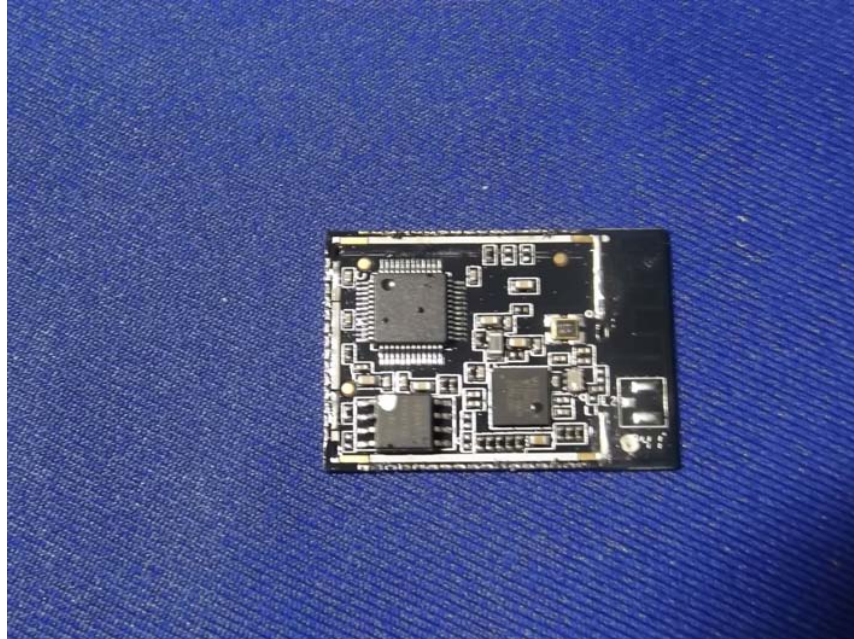


Figure 5  
The EUT-Inside View

