

**INTERNAL PHOTO DOCUMENTATION**

**16804174 001**

**for**

**Pulse Radar Level Instrument  
Beijing GODA Instruments Co., LTD.**



This documentation consists of 18 pages (excluding this cover page).

For GDRD56 series:



**1 antenna with electronic part**



**2 antenna with connector top view**



**3 electronic part front view**



**4 electronic part top view**



**5 electronic part back view**



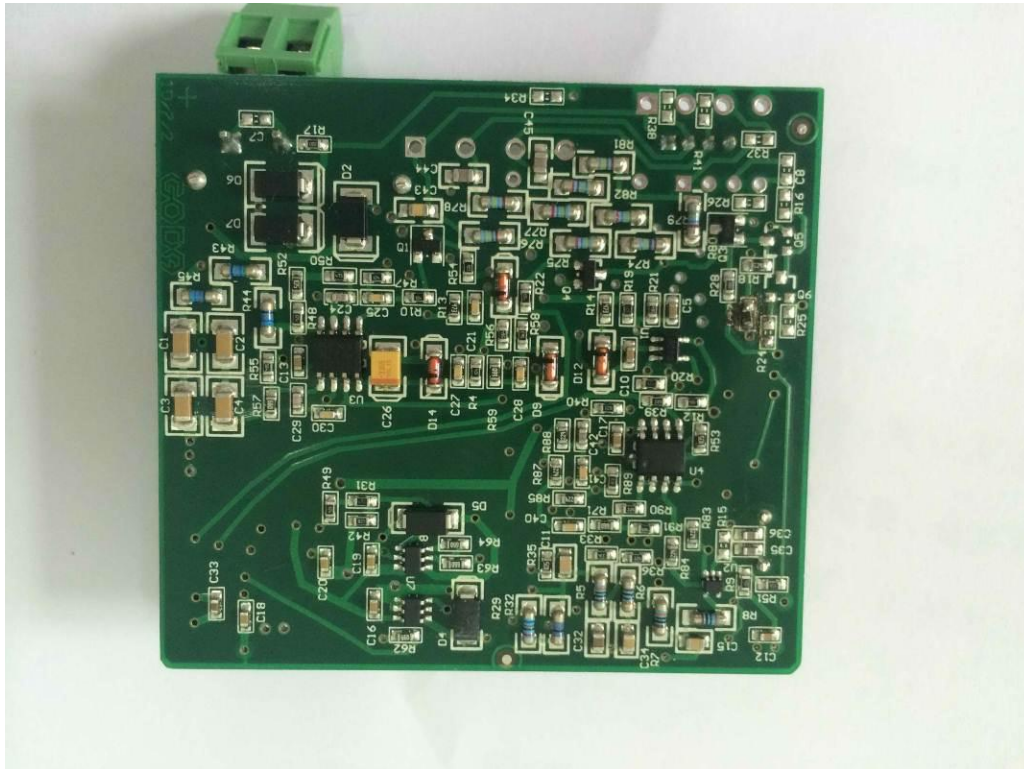
**6 electronic part bottom view**



**7 PCB POWER BOARD top view with shielding**



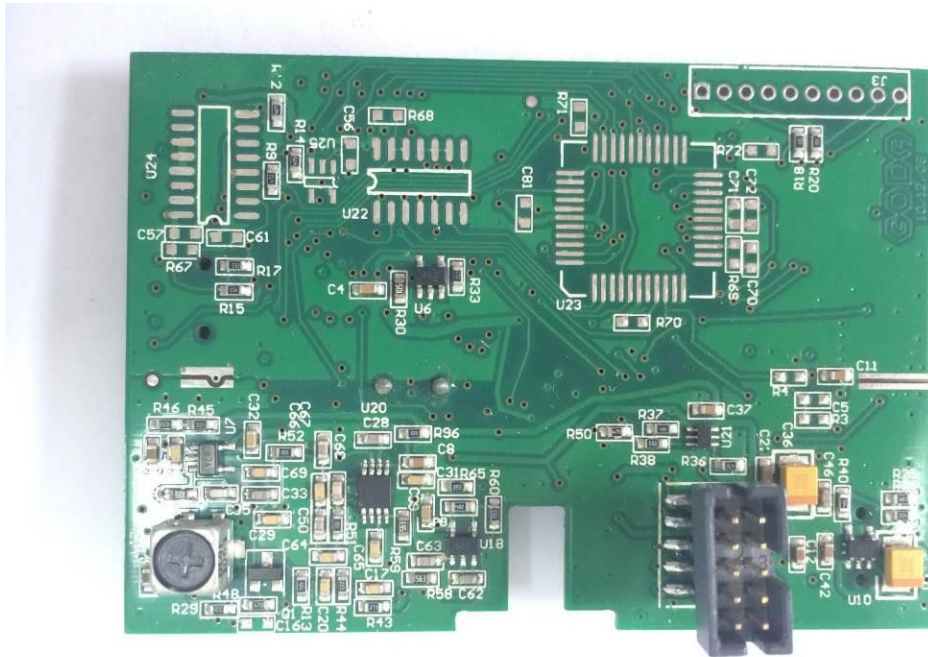
**8 PCB POWER BOARD top view without shielding**



9 PCB POWER BOARD bottom view



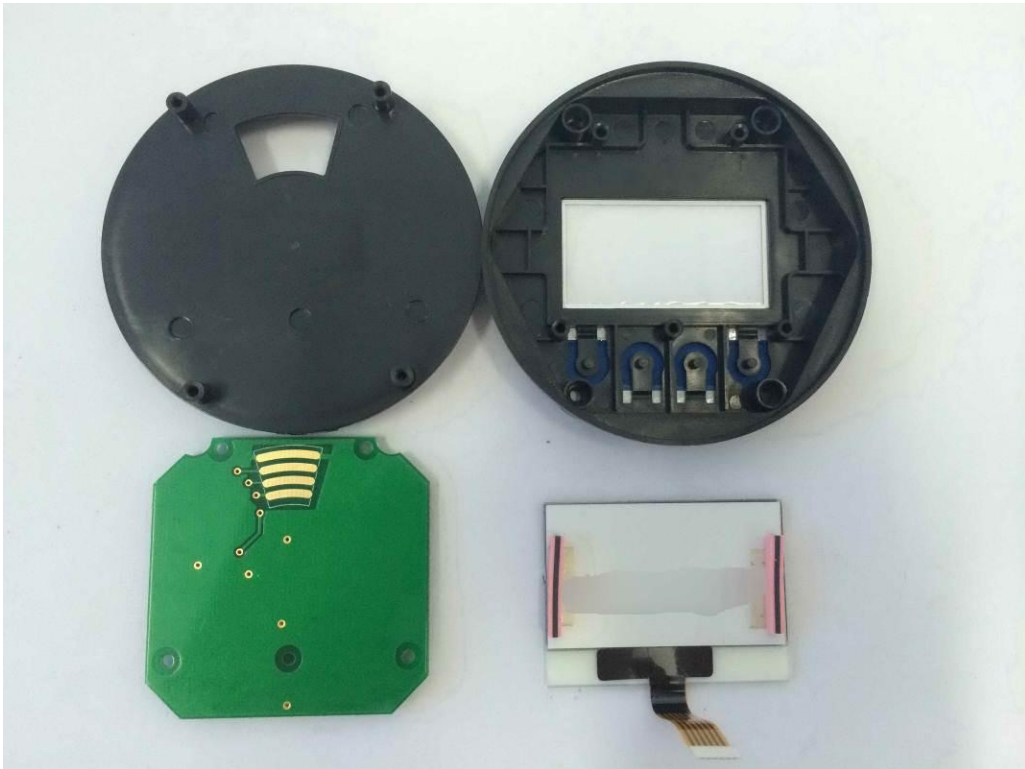
10 PCB MCU BOARD top view



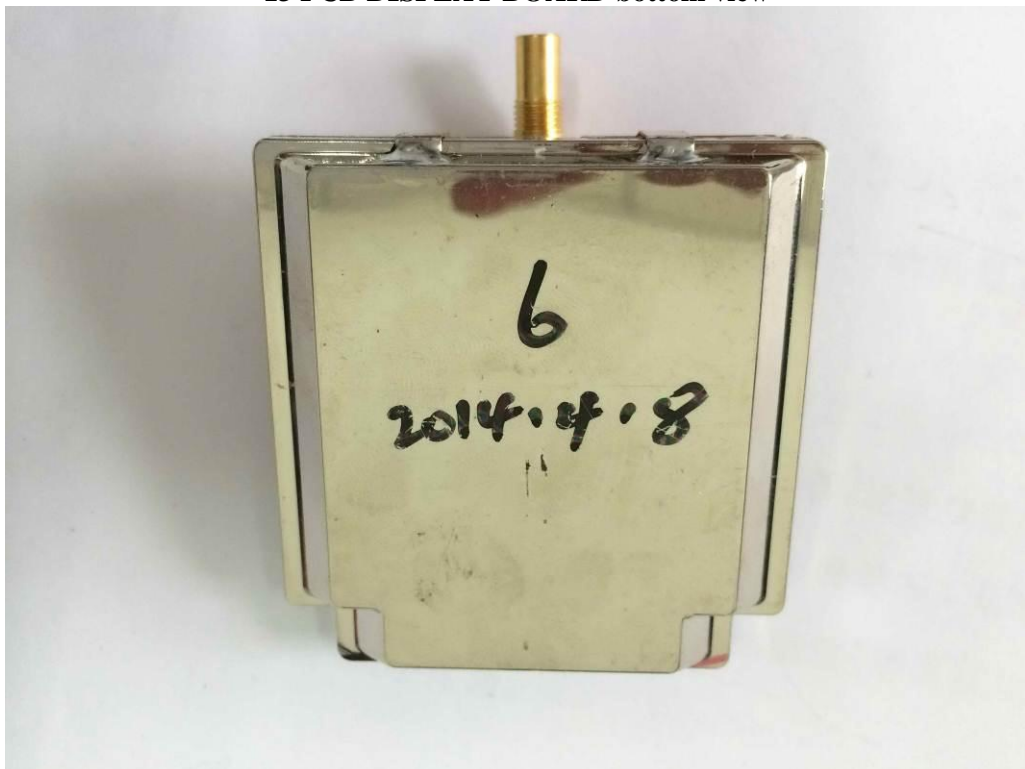
11 PCB MCU BOARD bottom view



12 PCB DISPLAY BOARD top view



**13 PCB DISPLAY BOARD bottom view**

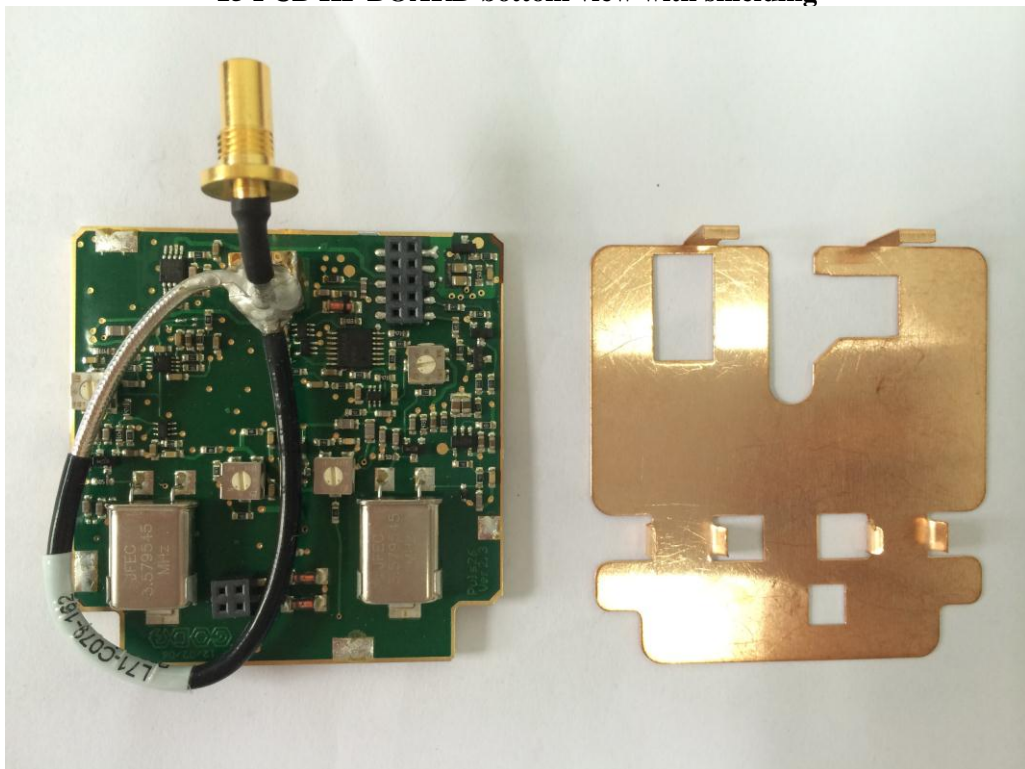


**14 PCB HF BOARD top view with shielding**

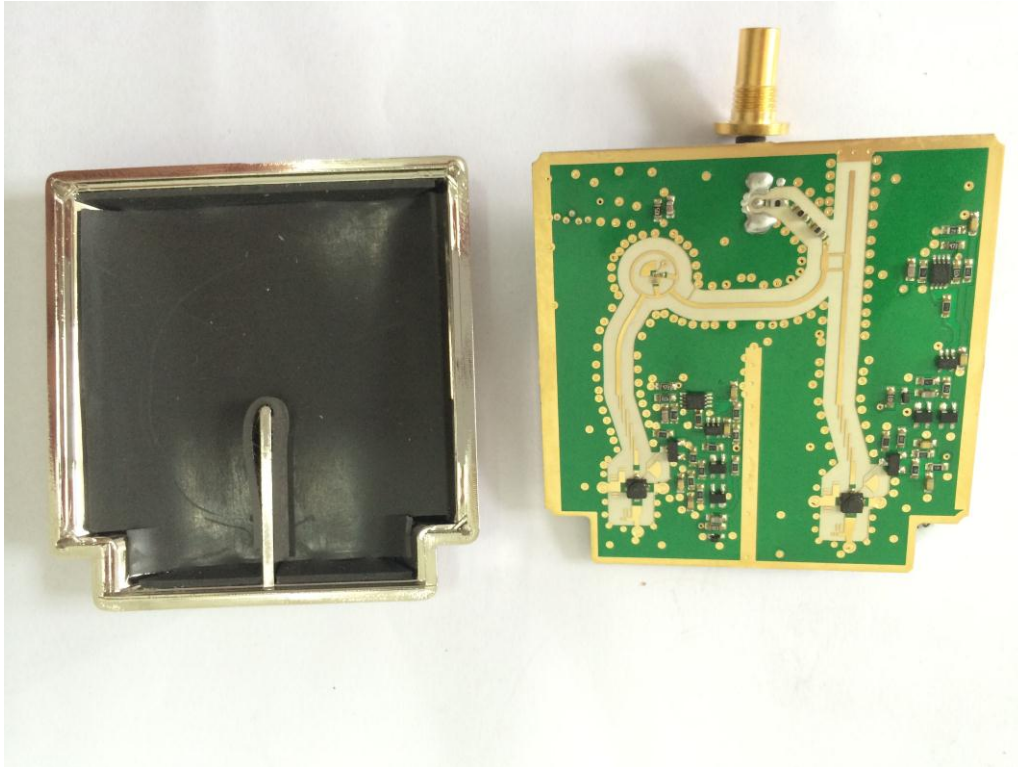




**15 PCB HF BOARD bottom view with shielding**



**16 PCB HF BOARD top view without shielding**



**17 PCB HF BOARD bottom view without shielding**

For GDRD55 series:



**1 antenna with electronic part**



**2 antenna with connector top view**



**3 electronic part front view**



**4 electronic part top view**



**5 electronic part back view**



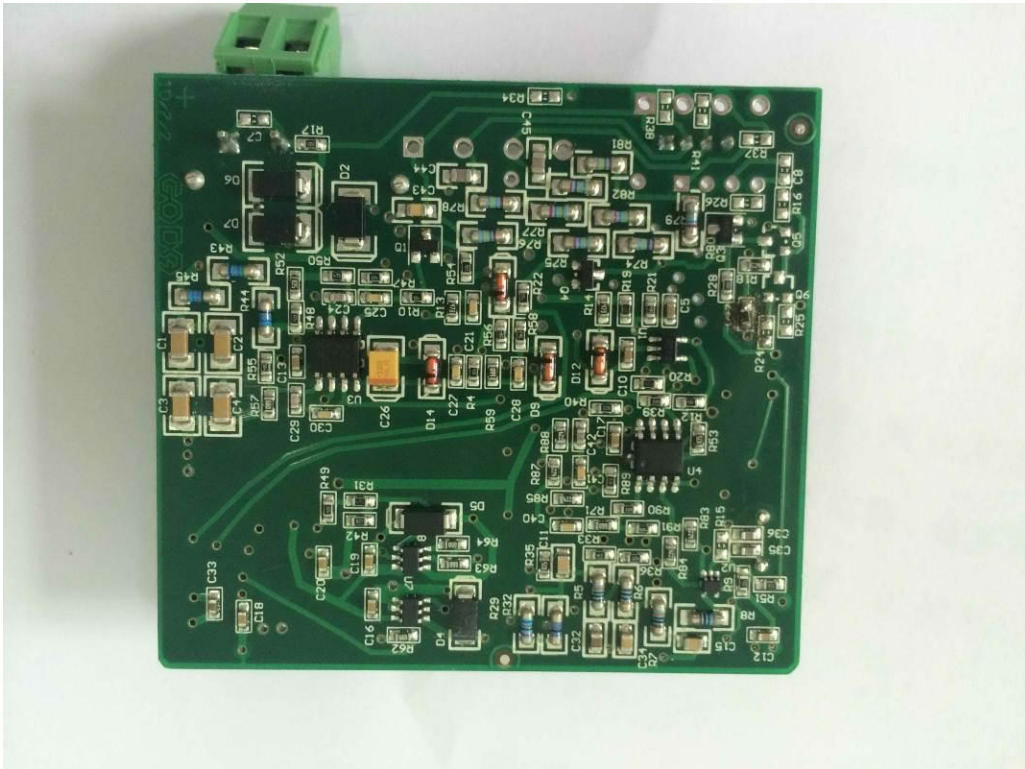
**6 electronic part bottom view**



**7 PCB POWER BOARD top view with shielding**



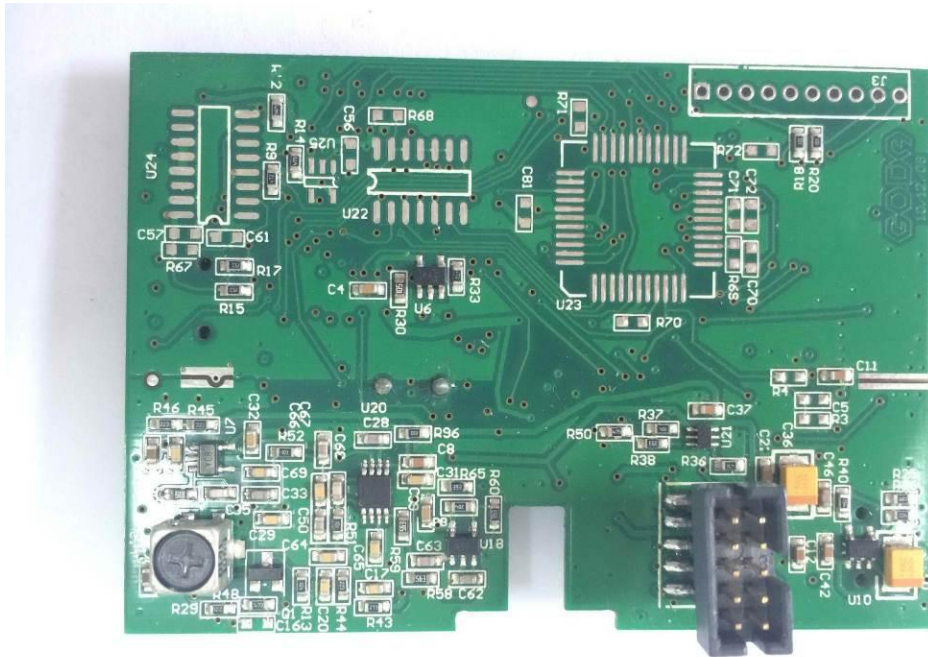
**8 PCB POWER BOARD top view without shielding**



**9 PCB POWER BOARD bottom view**



**10 PCB MCU BOARD top view**



11 PCB MCU BOARD bottom view

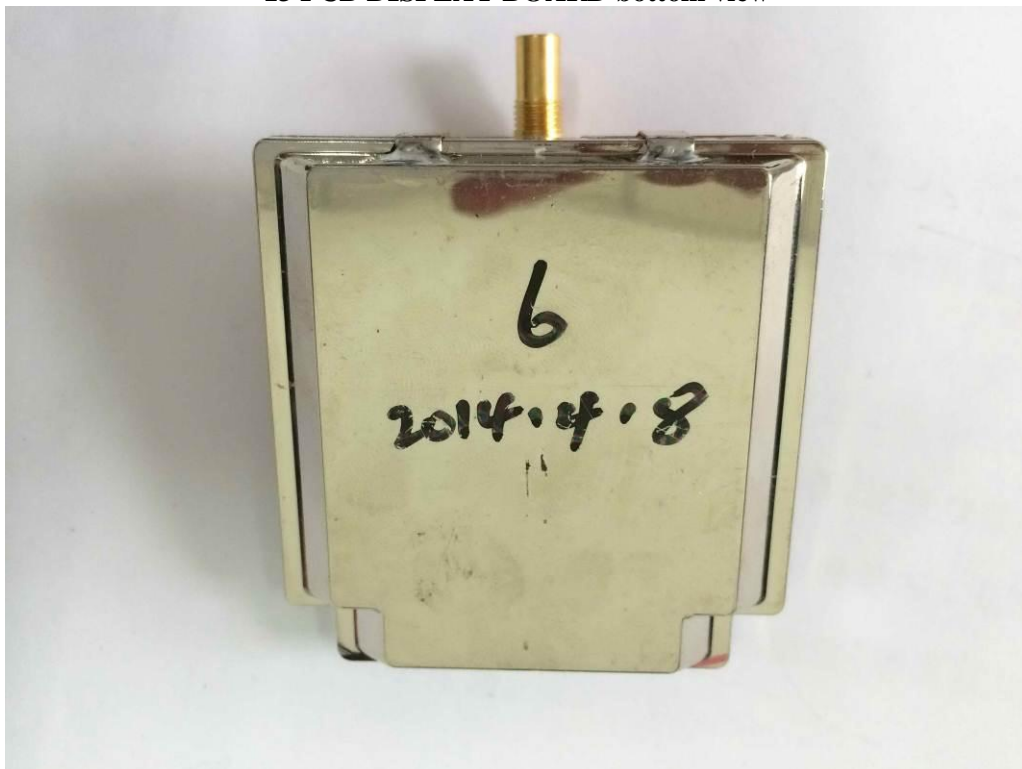


12 PCB DISPLAY BOARD top view





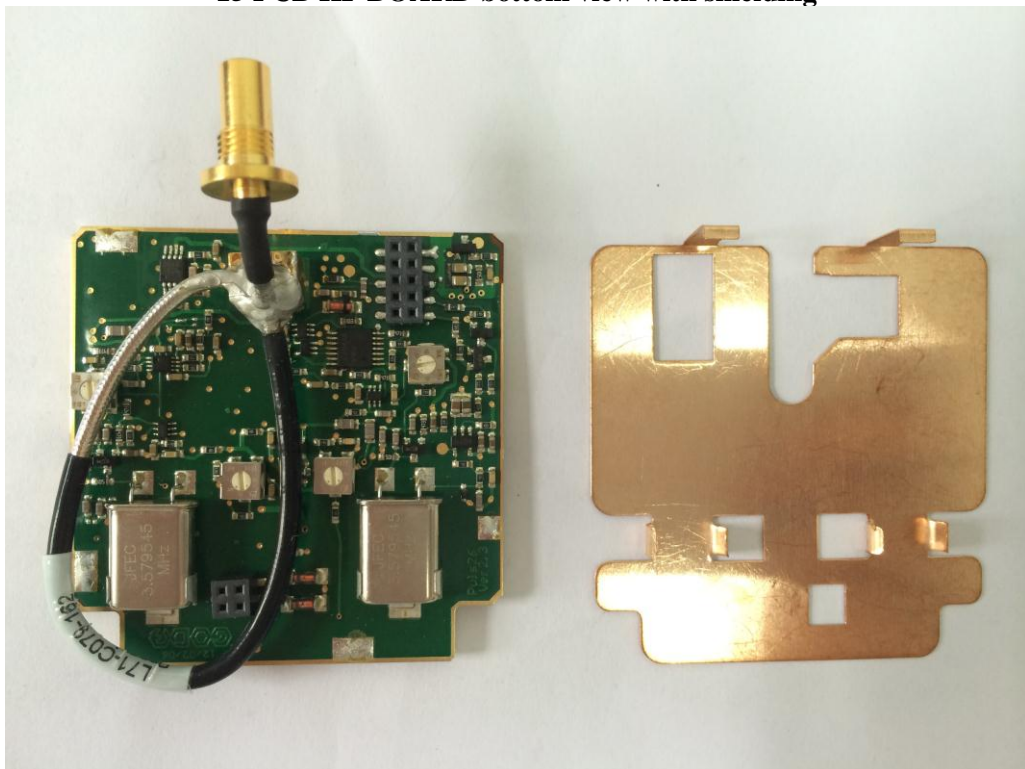
**13 PCB DISPLAY BOARD bottom view**



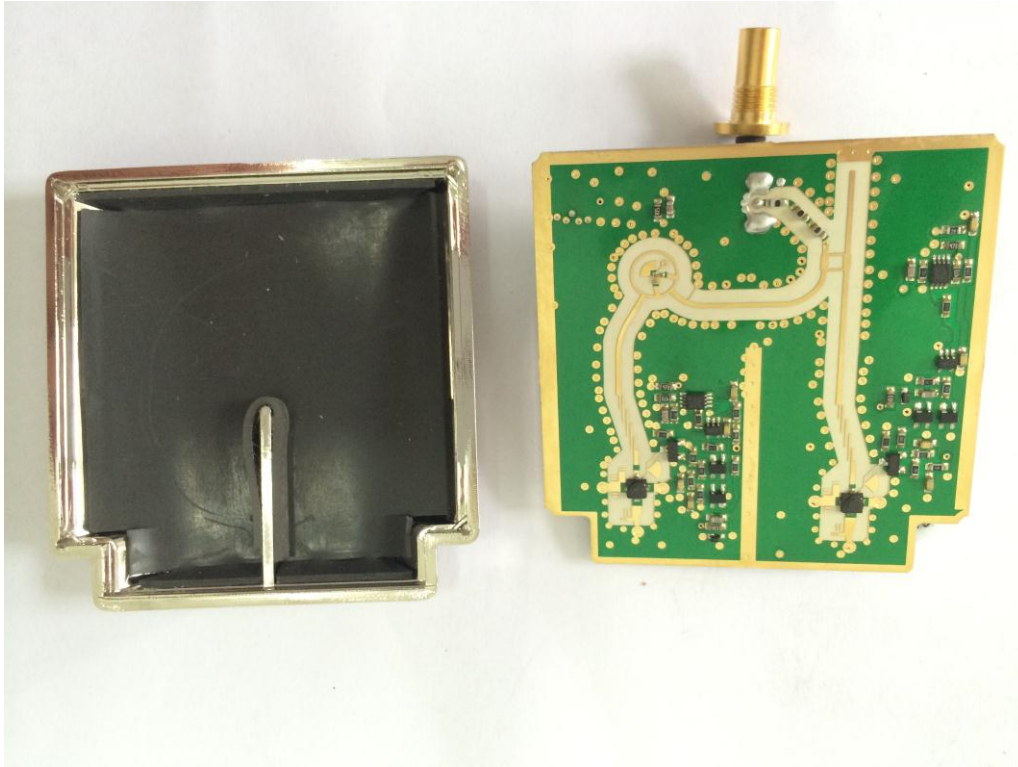
**14 PCB HF BOARD top view with shielding**



**15 PCB HF BOARD bottom view with shielding**



**16 PCB HF BOARD top view without shielding**



**17 PCB HF BOARD bottom view without shielding**