

# **Statement of Type-Equality**

## **Level C**

MODEL NLI HU

## STATEMENT OF TYPE-EQUALITY LEVEL C

The company HARMAN Automotive Electronic Systems (Suzhou) Co., Ltd, located at No. 125, Fangzhou Road, SIP, Suzhou, Jiangsu, China, as being the manufacturer of the products--Level C which include 3 variants:

BE L003,  
BE L004,  
BE L005,

hereby confirmed that the products are type equal products and differ only in the tuner components which is designed for different target countries. The 3 variants share same main board and same tuner board.

	BE L003	BE L004	BE L005
Navigation	Y	Y	Y
DAB (Digital Audio Broadcasting)	N	Y	N
SDARS (Satellite Digital Audio Radio Service)	N	N	Y

Y—The variant support this function

N—The variant doesn't support this function

The following photos show the different and components placement for these 3 variants:

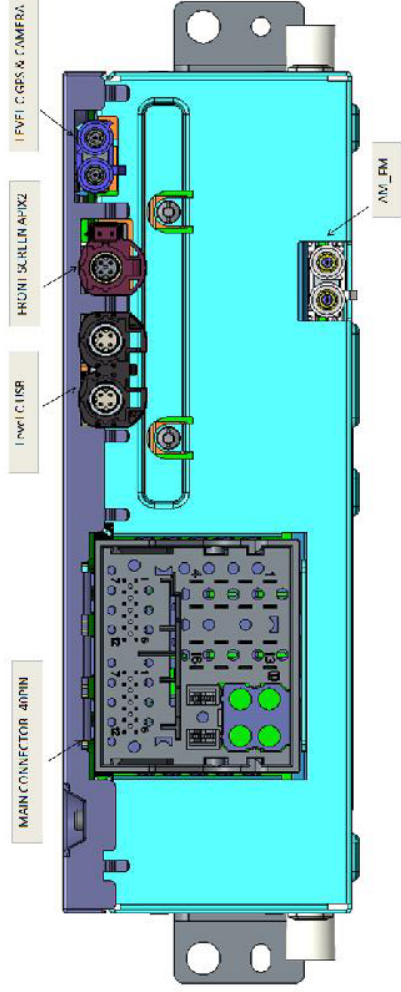
Page 3: Tuner connector

Page 4: Tuner board

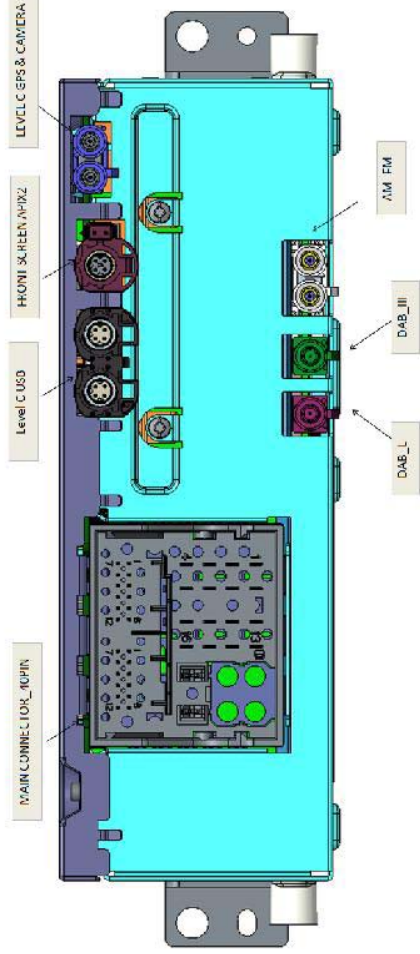
Page 5: Main PCB plate (Front side)

Page 6: Main PCB plate (Back side)

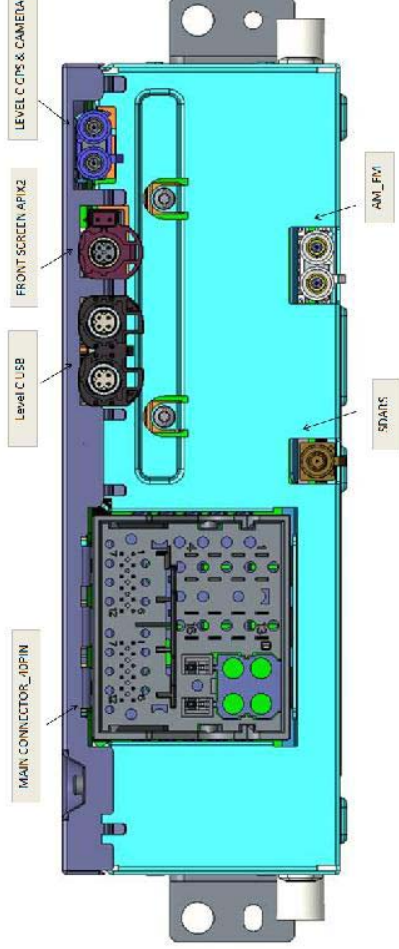
**BE L003 (Level C Navigation only)**



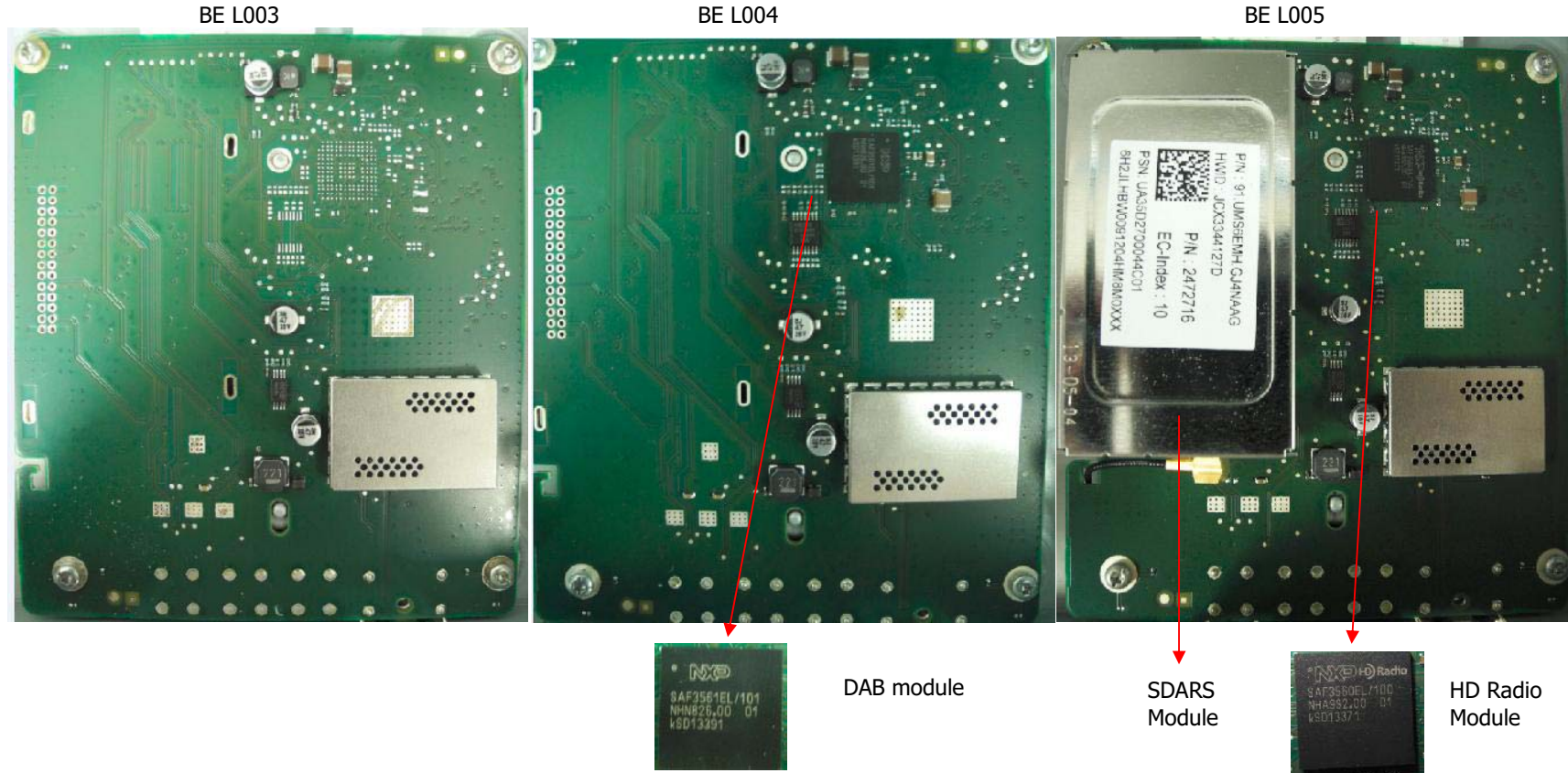
**BE L004 (Level C Navigation + DAB)**



**BE L005 (Level C Navigation + SDARS)**

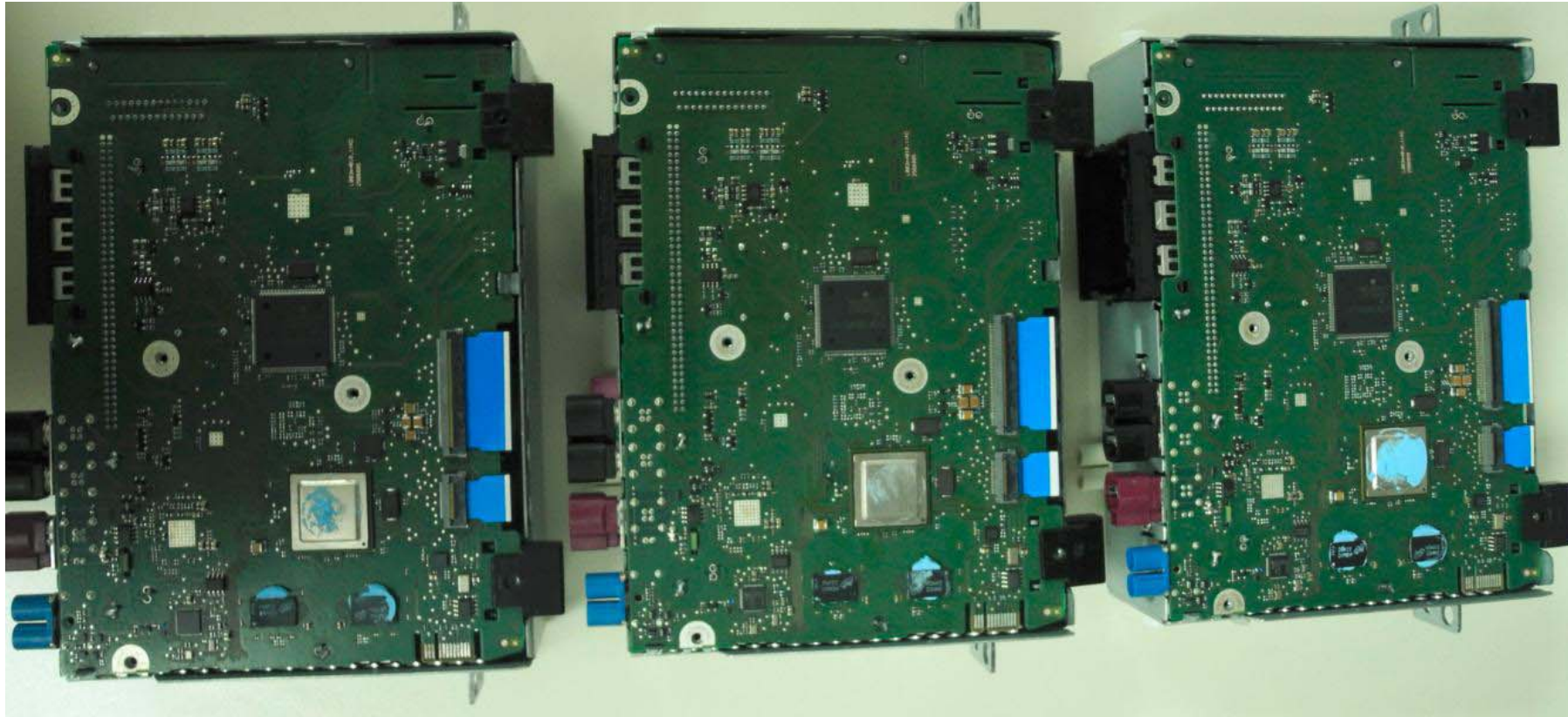


The BE L003, BE L004 and BE L005 have the same tuner board and differ only in the tuner components which is designed for different target countries.





BE L003, BE L004, BE L005 have the same main PCB plate and same components. (Front side)



BE L003, BE L004, BE L005 have the same main PCB plate and same components. (Rear side)

