

inova<sup>®</sup>  
Semiconductors  
**APIX<sup>®</sup>2**  
INAP375T  
11066\_1539

TLF4277C  
256  
G1530

TLF4277C  
256  
G1530

T 10.000  
03544

762T  
24R  
61529

TLF4277C  
256  
G1530

C045

ICM18

880B3







D70F3554M1A1  
FJ4  
1544KE621  
SINGAPORE



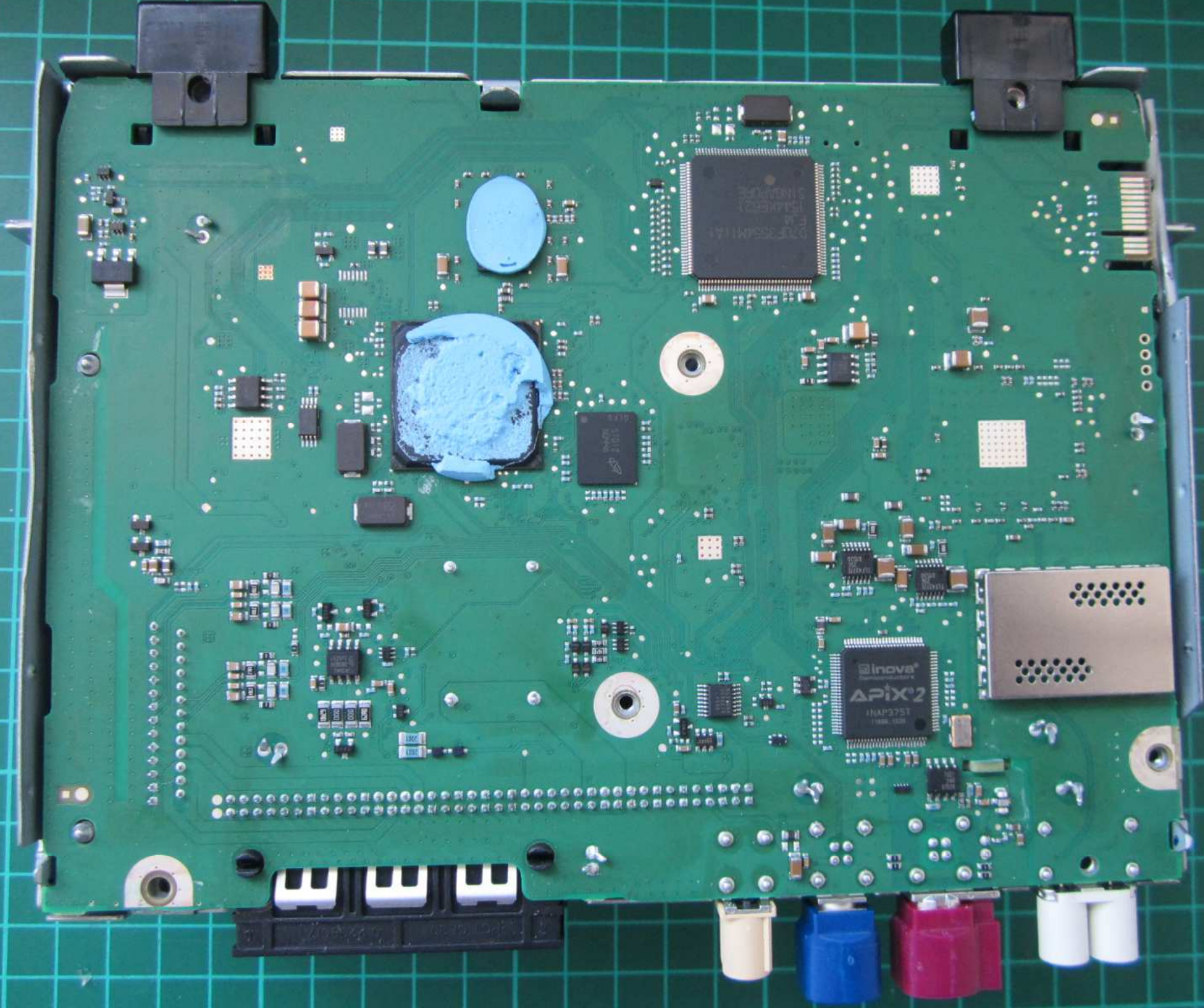


inova  
Semiconductors  
**APIX<sup>2</sup>**  
INAP375T  
13055 - 1330

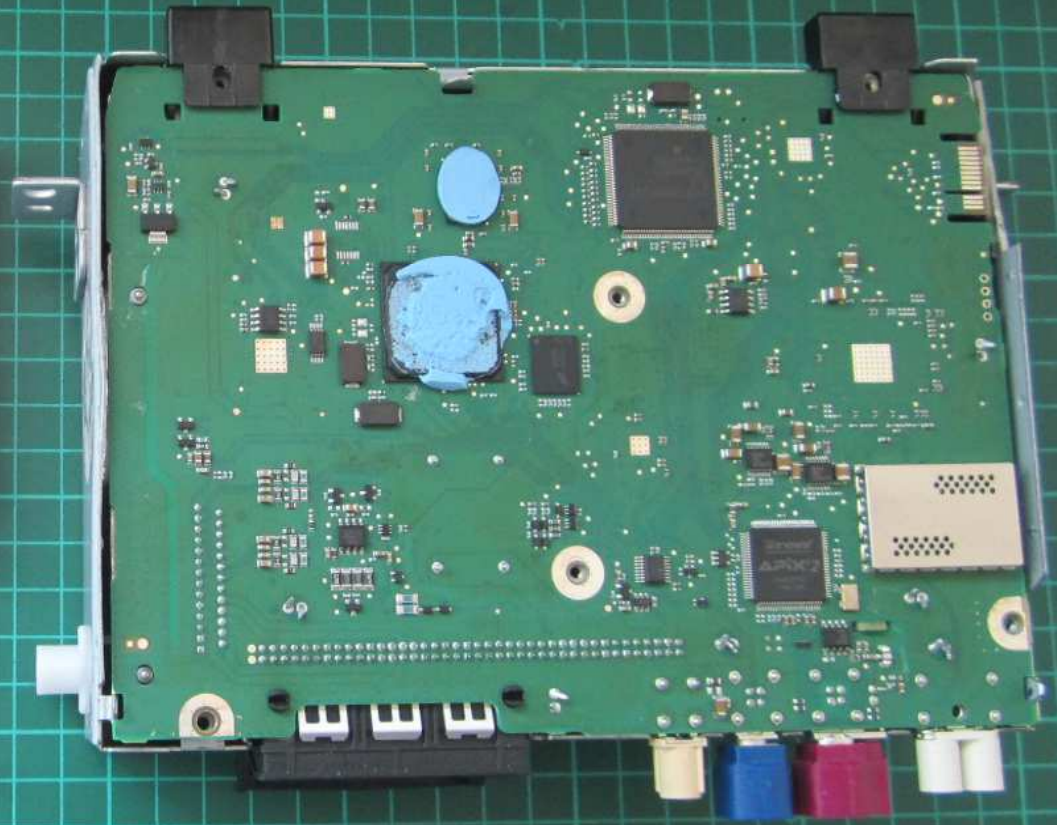
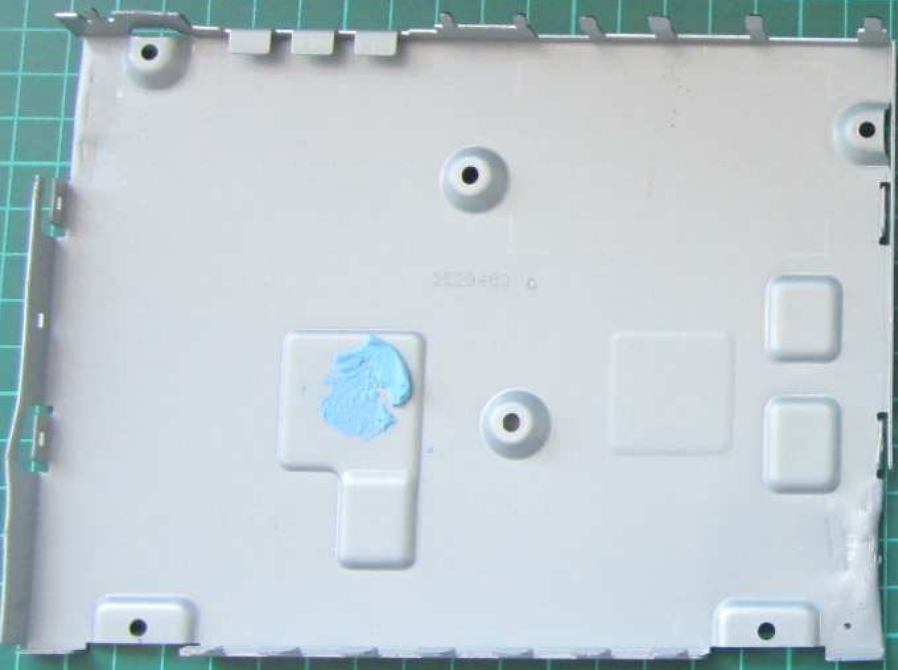
TLF4272C  
24G  
G1408

2509042

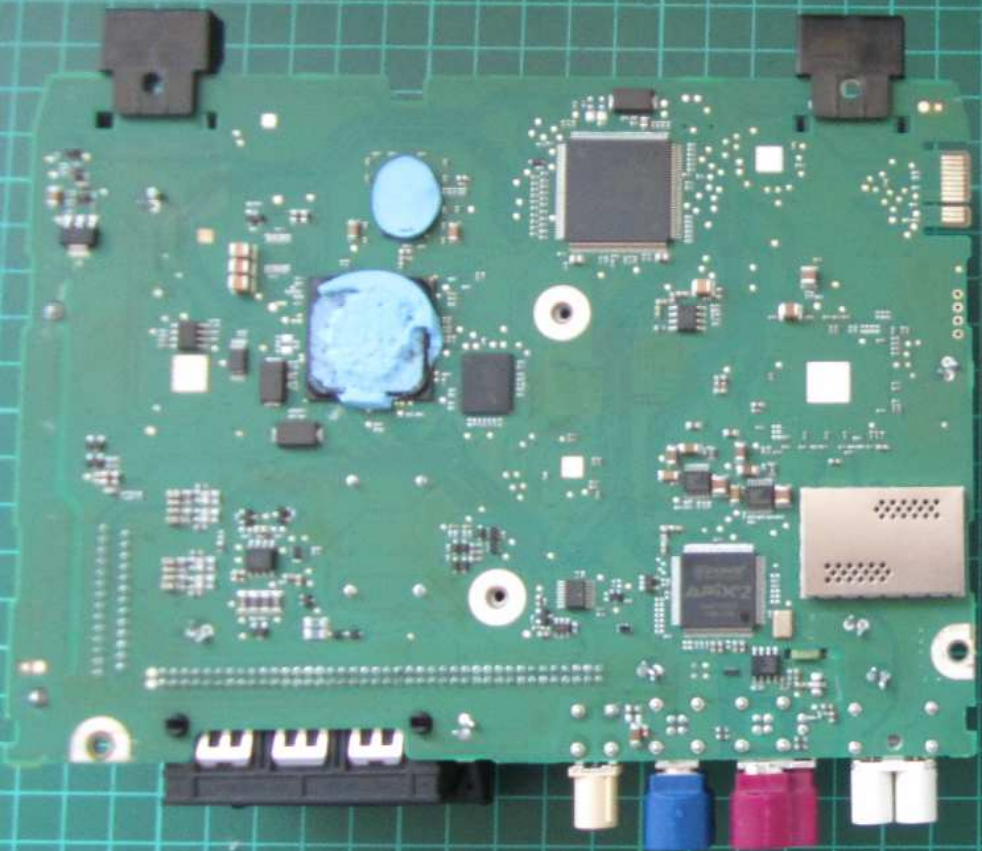












ech  
A2