

**USER MANUAL**  
**DIGITAL BABY MONITOR**  
**BM-156**

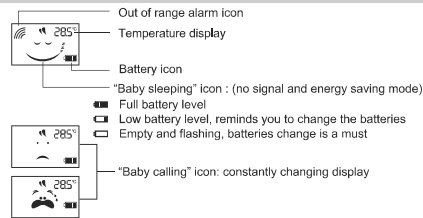
**Parents Unit**



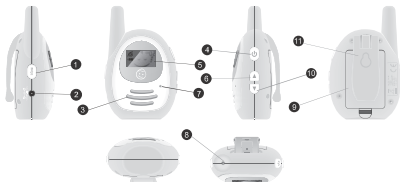
**Name**

- ① TALK Key
- ② POWER ON/OFF Key
- ⑦ Microphone
- ⑩ Battery Compartment
- ② Power Supply Socket
- ⑤ LCD Display
- ⑧ Volume "-" Key
- ③ Speaker
- ⑥ Volume "+" Key
- ⑨ Belt Clip

**LCD Display**



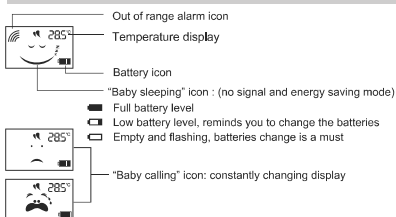
**Baby Unit**



**Name**

- ① Page Key
- ④ POWER ON/OFF Key
- ⑦ Microphone
- ⑩ Volume "-" Key
- ② Power Supply Socket
- ⑤ LCD Display
- ⑧ Temperature sensor
- ⑪ Belt Clip (The belt clip of baby unit isn't used for body-worn, and only hanging on baby cart.)
- ③ Speaker
- ⑥ Volume "+" Key
- ⑨ Battery Compartment

**LCD Display**



**Operations Procedure**

**Power ON/OFF**

- Insert 3 AAA batteries or connect the Baby unit with the AC adaptor. The unit will be turned on automatically.
- Power on by pressing 2 seconds POWER ON/OFF Key "Ⓞ".
- LCD was full displayed, 5 seconds for the backlight.
- Power off by pressing 2 seconds POWER ON/OFF Key "Ⓞ" until no display on LCD.

**Volume Adjustment**

- Press the key "▲" on the right side for increasing volume level.
- Press the key "▼" on the right side for decreasing volume level.

**Baby Room temperature display**

After 30-60 seconds when powering on; Meanwhile it can be transmitted to parent unit. The temperature is influenced by the outer environment and will be changed Accordingly.

**Page function**

- Press PAGE key to call the PARENT unit
- The parent unit will give out "Bi, Bi" sound 3 times ( BiBi, BiBi, BiBi ).
- After 3 times, no sound will be heard unless pressing PAGE Key again.

**Low Battery Indicator**

- When the unit is in low battery, the power indicator should will be flashing which means the battery is low.
- At the same time, with "Bi, Bi" alert sound will be heard.

**Battery Charging**

- Insert 3 AAA rechargeable batteries.
- Use only the AC adaptors and plug into any nearby standard household electrical outlet.

**Out of range alert (for Baby unit)**

- The out of range alert would be flashing but no sound will be heard, BiBi Alert sound will be heard in parent unit only.
- The units are detected out of communication range.
- One of the parent and baby unit is in low battery or turned off

**NOTE: Code Pairing**

: Turn off both unit first and Turn them on again, pressing the key "▼" and POWER OFF Key "Ⓞ" 2 seconds at the same time (press the key "▼" first and then press POWER OFF key "Ⓞ"), the below icon will appear. The same operation on another unit, one "Bi" sound will be heard after successful code pairing.

**Technical Specifications**

Power Supply Voltage:  
Transmitter- 3 AAA rechargeable batteries & adaptor : AC 100V 240V- DC 5.5V 500mA  
Receiver - 3 AAA rechargeable batteries & adaptor : AC 100V 240V- DC 5.5V 500mA  
Operation Frequency: 2.4015-2.4525 GHz  
Operating Range: up to 300 metre in ideal conditions  
Set contents: 1 baby unit, 1 parent unit, 3 AAA rechargeable batteries, 2 adaptors.

**Operations Procedure**

**Power ON/OFF**

- Insert 3 AAA batteries or connect the Parents unit with the AC adaptor. The unit will be turned on automatically.
- Power on by pressing 2 seconds POWER ON/OFF Key "Ⓞ".
- LCD was full displayed, 5 seconds for the backlight.
- Power off by pressing 2 seconds POWER ON/OFF Key "Ⓞ" until no display on LCD.

**Volume Adjustment**

- Press the key "▲" on the right side for increasing volume level.
- Press the key "▼" on the right side for decreasing volume level.

**Talk to Baby unit (Only for parents unit)**

- Talk key is located at the left side of the parents unit.
- Press TALK key to talk to the Baby unit.
- Hold TALK key to talk to continue talking.

**Low Battery Indicator**

- When the unit is in low battery, the power indicator should will be flashing which means the battery is low.
- At the same time, with "Bi, Bi" alert sound will be heard.

**Battery Charging**

- Insert 3 AAA rechargeable batteries.
- Use only the AC adaptors and plug into any nearby standard household electrical outlet.

**Out of range alert (for Parents unit)**

- The parents unit will give out alert with "Bi, Bi" alert sound will be heard under such circumstances.
- The units are detected out of communication range.
- One of the parents and baby unit is in low battery or turned off.

**Technical Specifications**

Power Supply Voltage:  
● Transmitter - 3 AAA rechargeable batteries & adaptor : AC 100V - 240V- DC 5.5V, 500mA  
● Receiver - 3 AAA rechargeable batteries & adaptor : AC 100V - 240V- DC 5.5V, 500mA  
● Operation Frequency: 2.4015-2.4525 GHz  
● Operating Range: up to 300 metre in ideal conditions  
● Set contents: 1 baby unit, 1 parent unit, 3 AAA rechargeable batteries, 2 adaptors.

**This version is for FCC**

**FCC Statement:**

This device complies with part 15 of the FCC Rules. Operation is subject to the following two conditions: (1) This device may not cause harmful interference, and (2) this device must accept any interference received, including interference that may cause undesired operation.

**Note:** This equipment has been tested and found to comply with the limits for a Class B digital device, pursuant to part 15 of the FCC Rules. These limits are designed to provide reasonable protection against harmful interference in a residential installation. This equipment generates uses and can radiate radio frequency energy and, if not installed and used in accordance with the instructions, may cause harmful interference to radio communications. However, there is no guarantee that interference will not occur in a particular installation. If this equipment does cause harmful interference to radio or television reception, which can be determined by turning the equipment off and on, the user is encouraged to try to correct the interference by one or more of the following measures:

- Reorient or relocate the receiving antenna.
  - Increase the separation between the equipment and receiver.
  - Connect the equipment into an outlet on a circuit different from that to which the receiver is connected.
  - Consult the dealer or an experienced radio/TV technician for help.
- Any Changes or modifications not expressly approved by the party responsible for compliance could void the user's authority to operate the equipment.

**FCC Radiation Exposure Statement:**

This equipment complies with FCC radiation exposure limits set forth for an uncontrolled environment. This baby should be installed and operated with minimum distance 20cm between the radiator & your body. This transmitter must not be co-located or operating in conjunction with any other antenna or transmitter.