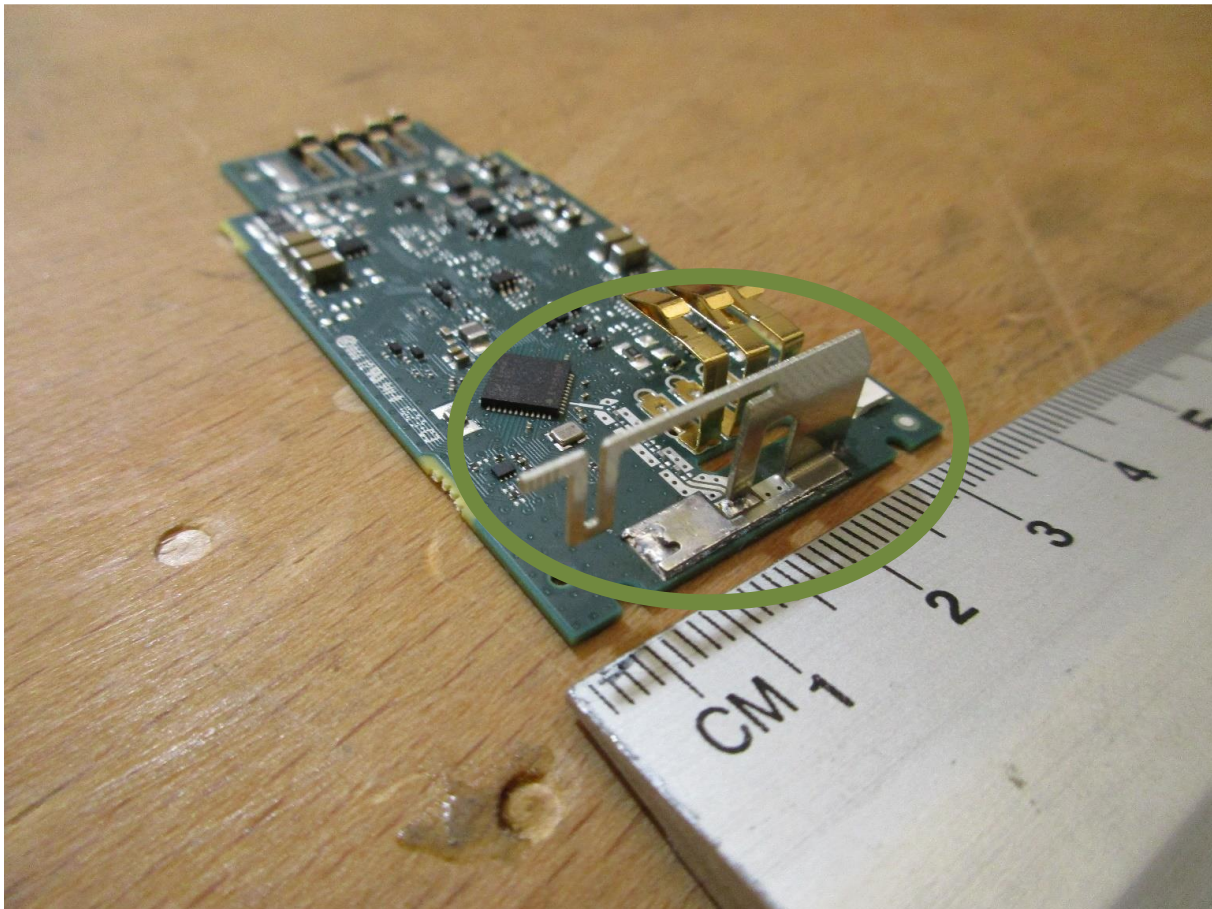


Part 15 Antenna Information

Description:

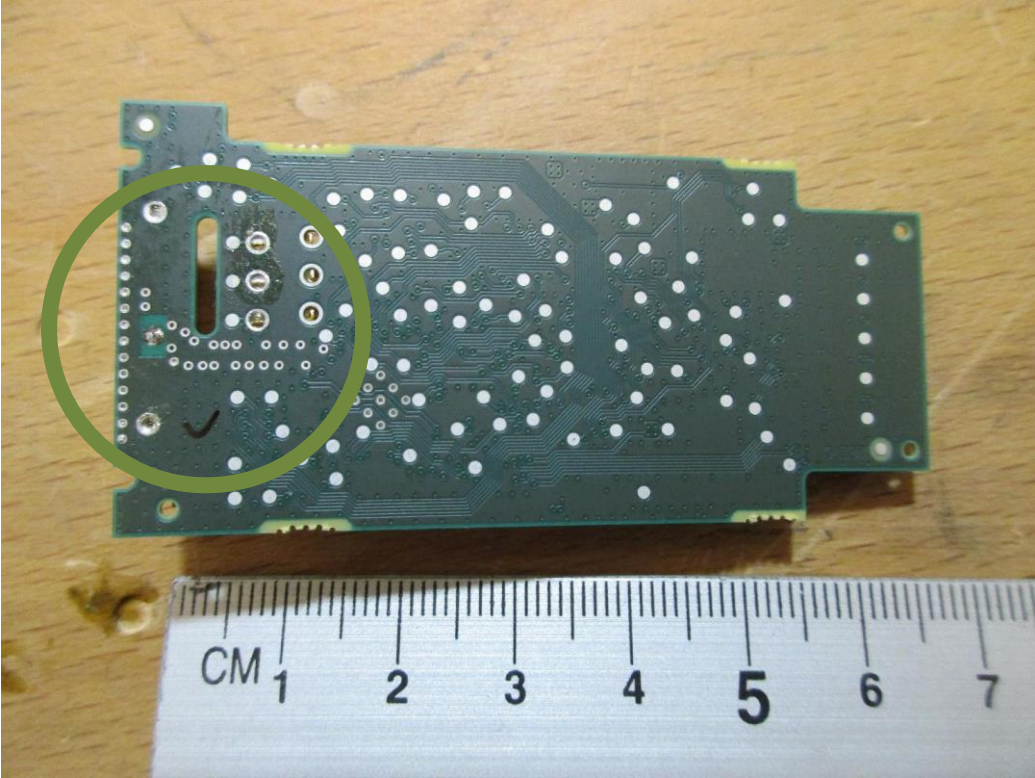
The device uses a meandered inverted-F antenna (IFA) in sheet metal technology which is fed by a coplanar waveguide.

Photograph of the assembled antenna and coplanar waveguide feed line:



Ruler dimensions are in centimeter.

Bottom view of the PCB, antenna ground connection on the left and coplanar line:



Measured gain:

Maximum Gain derived from EIRP and conducted measurement:		Maximum Gain (dBi)		
		2402 MHz	2440 MHz	2480 MHz
Test condition		2402 MHz	2440 MHz	2480 MHz
T _{nom} 23 °C	V _{nom} (3)V	1,97	2,35	3,05

Details are given in the test report exhibit.