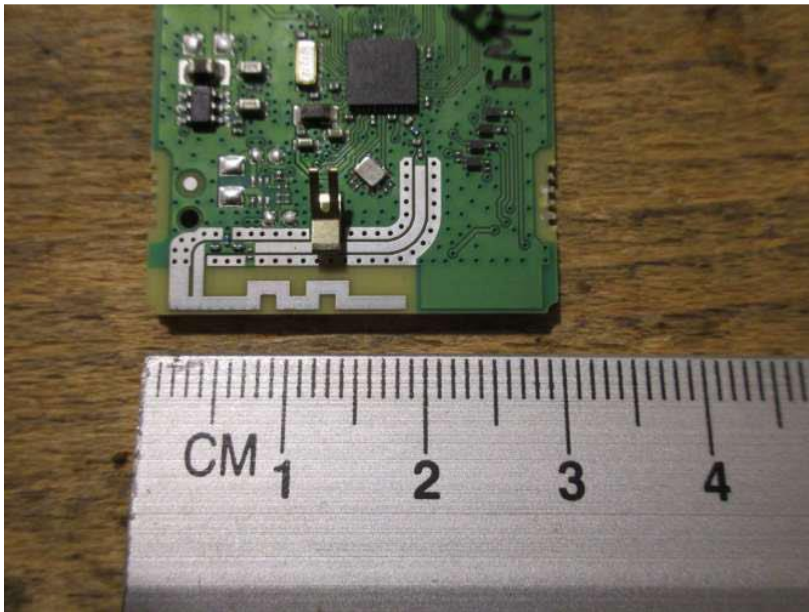


## Part 15 Antenna Information

Description:

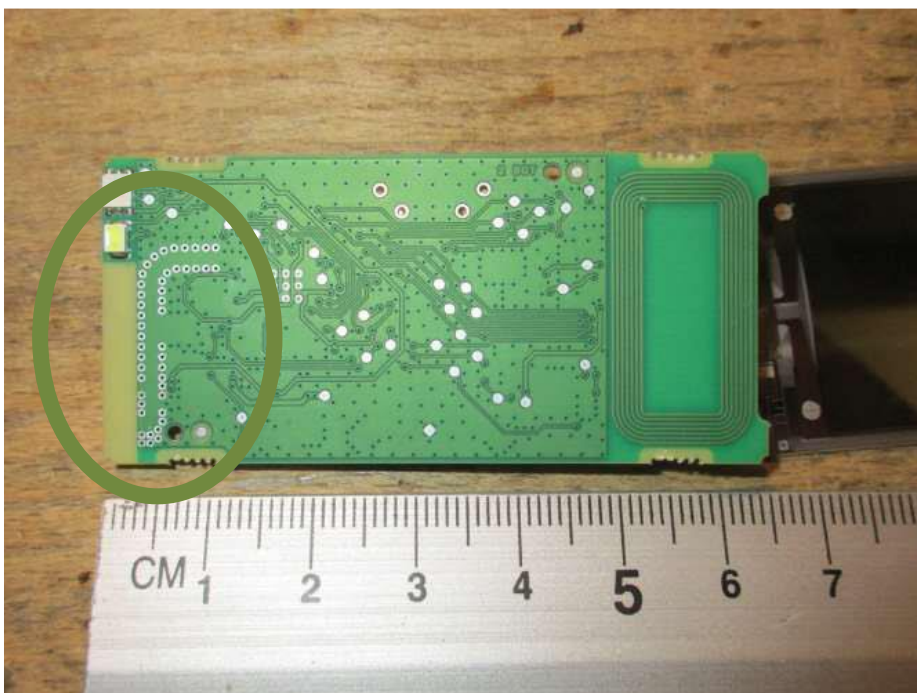
The device uses a meandered inverted-F antenna (IFA) in printed circuit board technology which is fed by a coplanar waveguide.

Photograph of the assembled antenna and coplanar waveguide feed line:



Ruler dimensions are in centimeter.

Bottom view of the PCB:



Measured gain:

Maximum Gain derived from EIRP and conducted measurement:		Maximum Gain (dBi)		
		CH 0 (2404,053MHz)	CH 4 (2441,844MHz)	CH 10 (2479,285MHz)
$T_{nom}$ 23 °C	$V_{nom}$ (3)V	-3,1	-1,46	-1,67

Details are given in the test report exhibit.