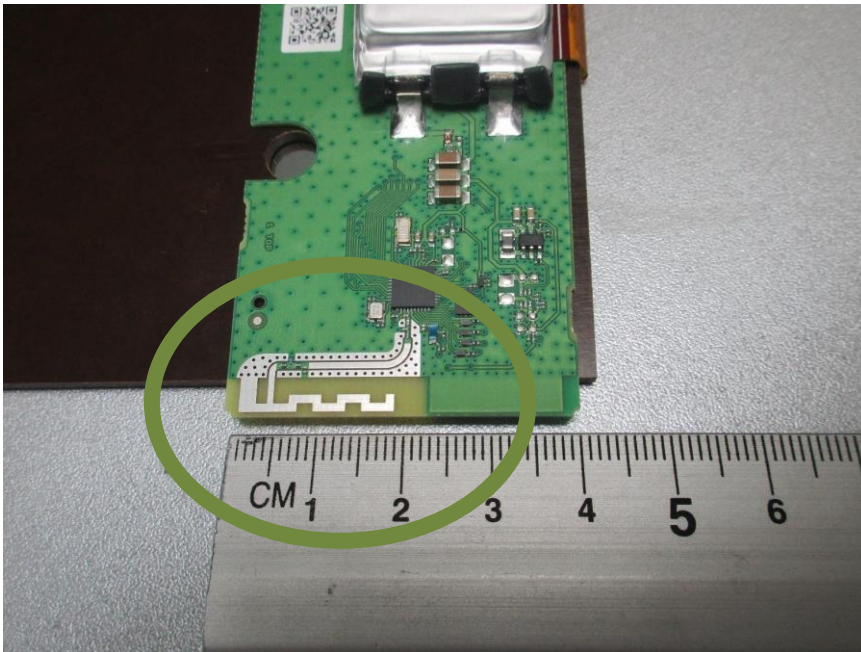


## Part 15 Antenna Information

Description:

The device uses a meandered inverted-F antenna (IFA) in printed circuit board (PCB) technology which is fed by a coplanar waveguide.

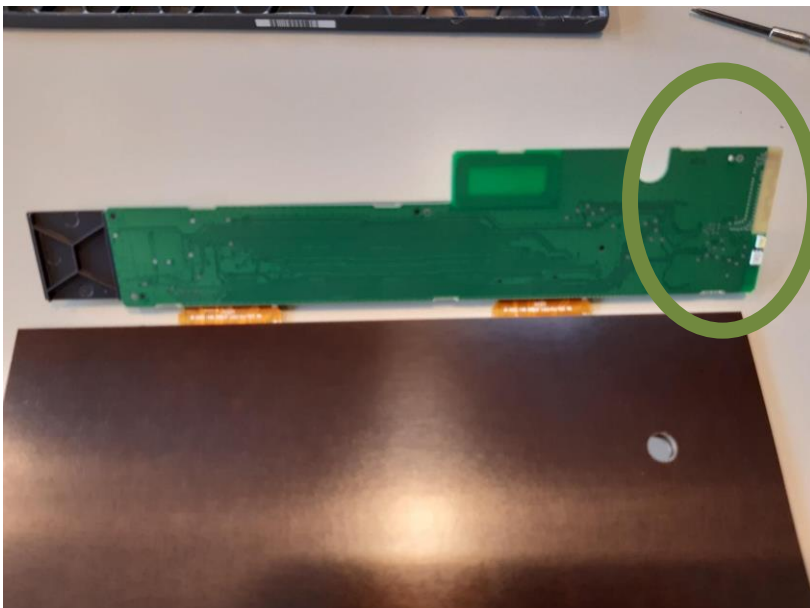
Photograph of the assembled antenna:



Ruler dimensions are in centimeter.

Detail view of the coplanar waveguide section:

Bottom view of the PCB:



Measured gain:

Maximum Gain derived from EIRP and conducted measurement:		Maximum Gain (dBi)		
		CH 0 (2404,053MHz)	CH 4 (2441,844MHz)	CH 10 (2479,285MHz)
$T_{nom}$ 23 °C	$V_{nom}$ (3)V	0,43	0,02	0,52

Details are given in the test report exhibit.