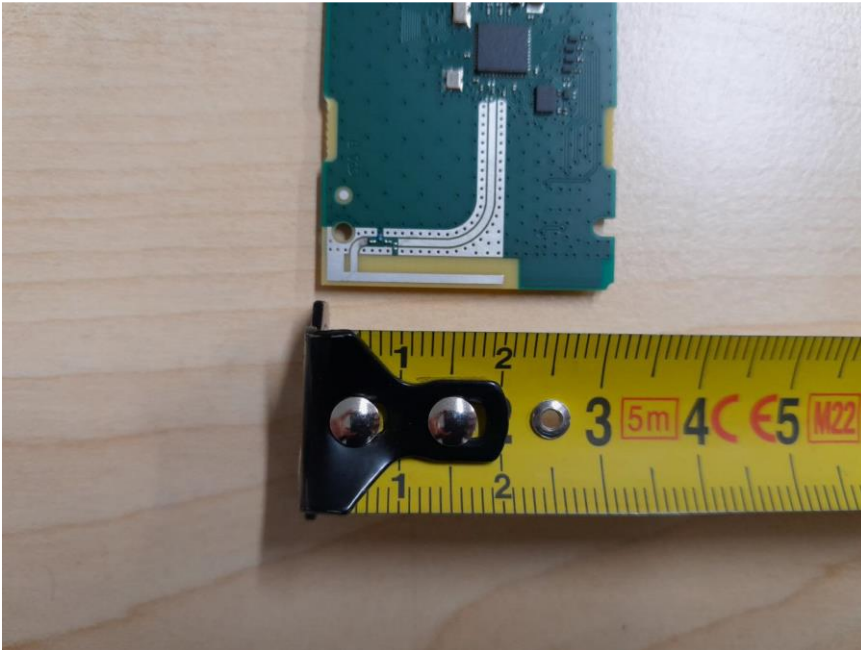


## Part 15 Antenna Information

Description:

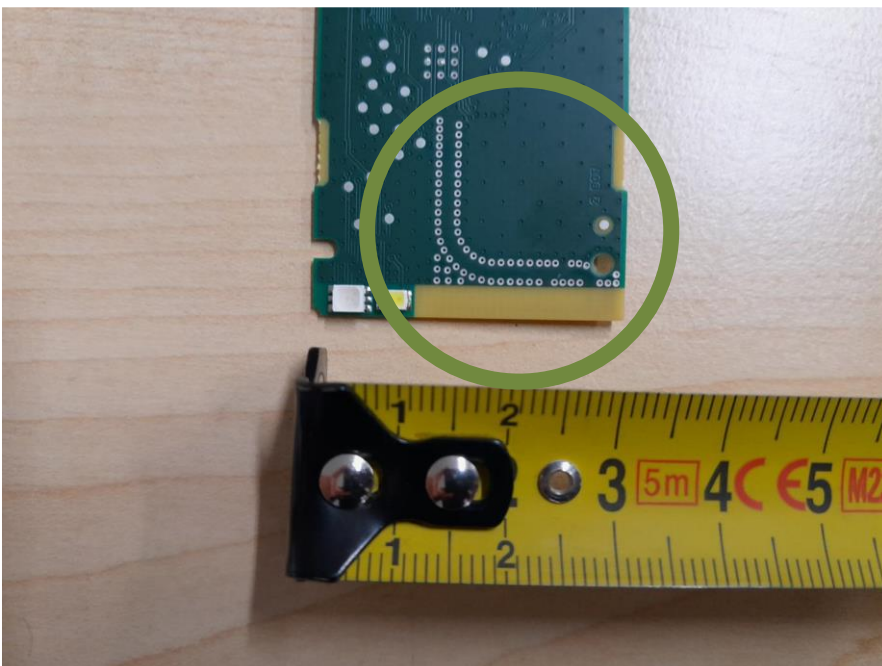
The device uses an inverted-F antenna (IFA) in printed circuit board technology which is fed by a coplanar waveguide.

Photograph of the assembled antenna and coplanar waveguide feed line:



Ruler dimensions are in centimeter.

Bottom view of the PCB:



Measured gain:

| Maximum Gain derived from EIRP and conducted measurement: |                | Maximum Gain (dBi) |          |          |
|-----------------------------------------------------------|----------------|--------------------|----------|----------|
|                                                           |                | 2402 MHz           | 2440 MHz | 2480 MHz |
| Test condition                                            |                | 2402 MHz           | 2440 MHz | 2480 MHz |
| $T_{nom}$ 25 °C                                           | $V_{nom}$ (3)V | -4,62              | -4,68    | -4,8     |

Details are given in the test report exhibit.