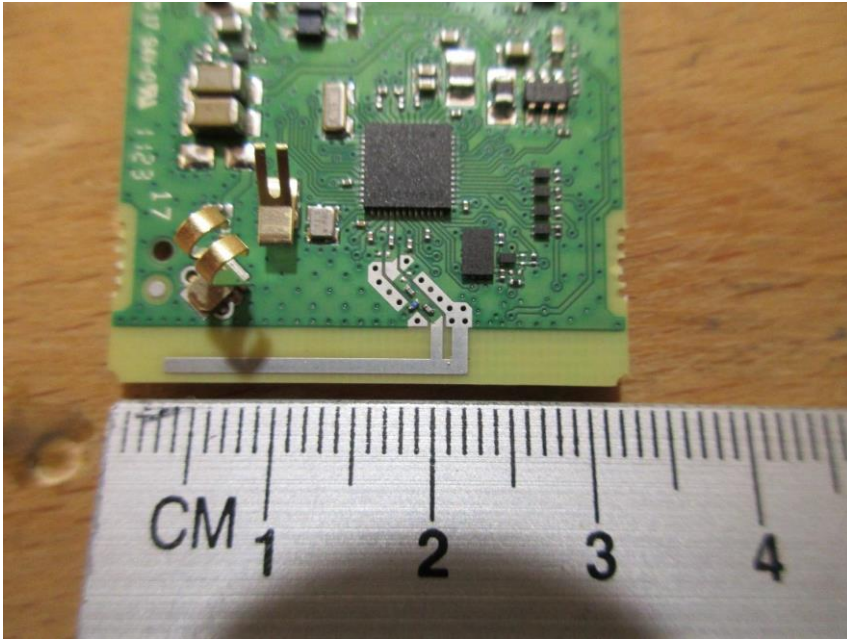


Part 15 Antenna Information

Description:

The device uses an inverted-F antenna (IFA) in printed circuit board technology which is fed by a coplanar waveguide.

Photograph of the assembled antenna and coplanar waveguide feed line:



Ruler dimensions are in centimeter.

Bottom view of the PCB:



Measured gain:

Maximum Gain derived from EIRP and conducted measurement:		Maximum Gain (dBi)		
		2402 MHz	2440 MHz	2480 MHz
Test condition				
T_{nom} 23 °C	V_{nom} (3)V	0,04	0,72	0,73

Details are given in the test report exhibit.