

## Annex B. EUT And Test Setup Photographs

### Annex B.i. Photograph: EUT External Photo

Whole Package View



Adapter - Label View



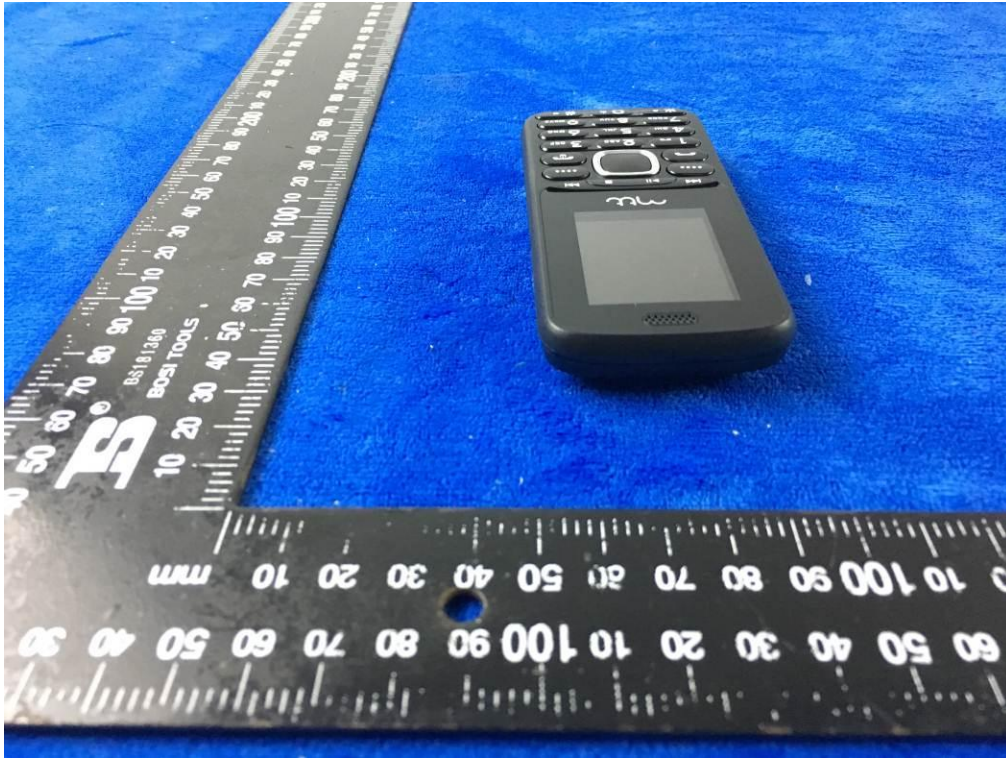
EUT - Front View



EUT - Rear View



EUT - Top View



EUT - Bottom View



EUT - Left View



EUT - Right View



**Annex B.ii. Photograph: EUT Internal Photo**

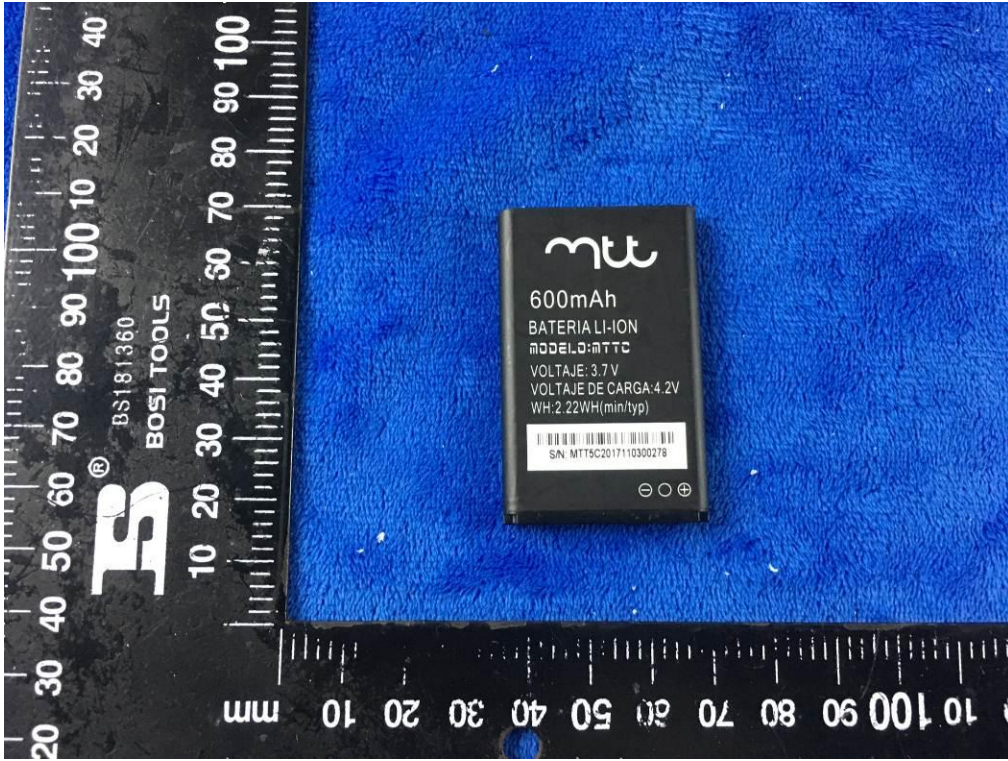
Cover Off - Top View 1



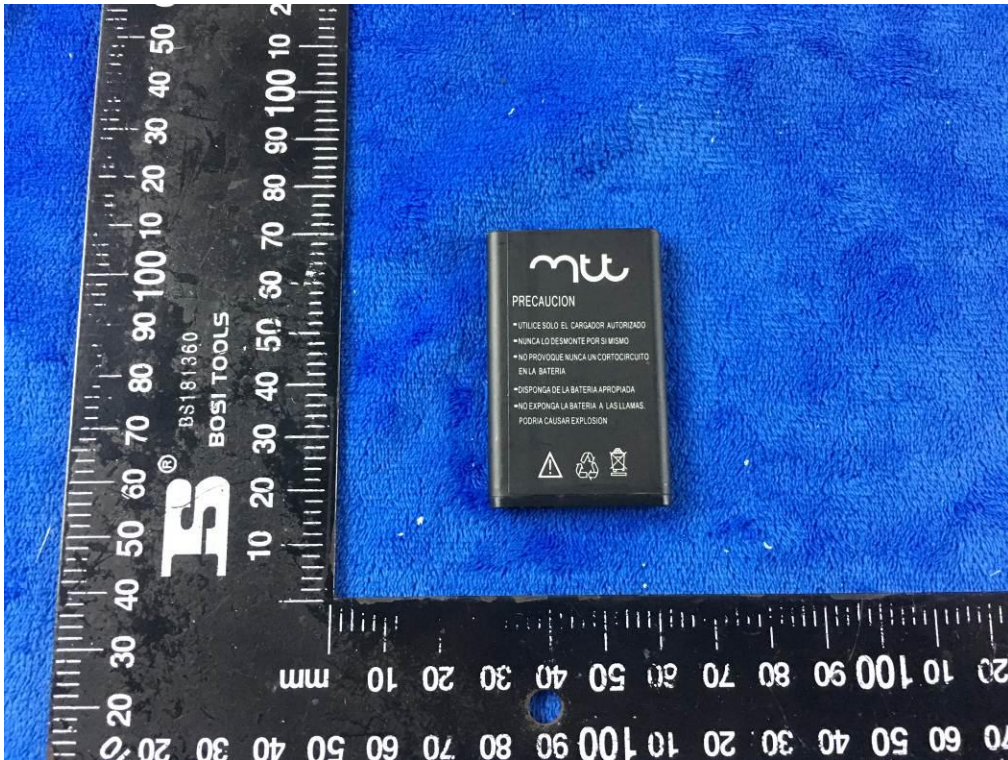
Cover Off - Top View 2



Battery - Front View



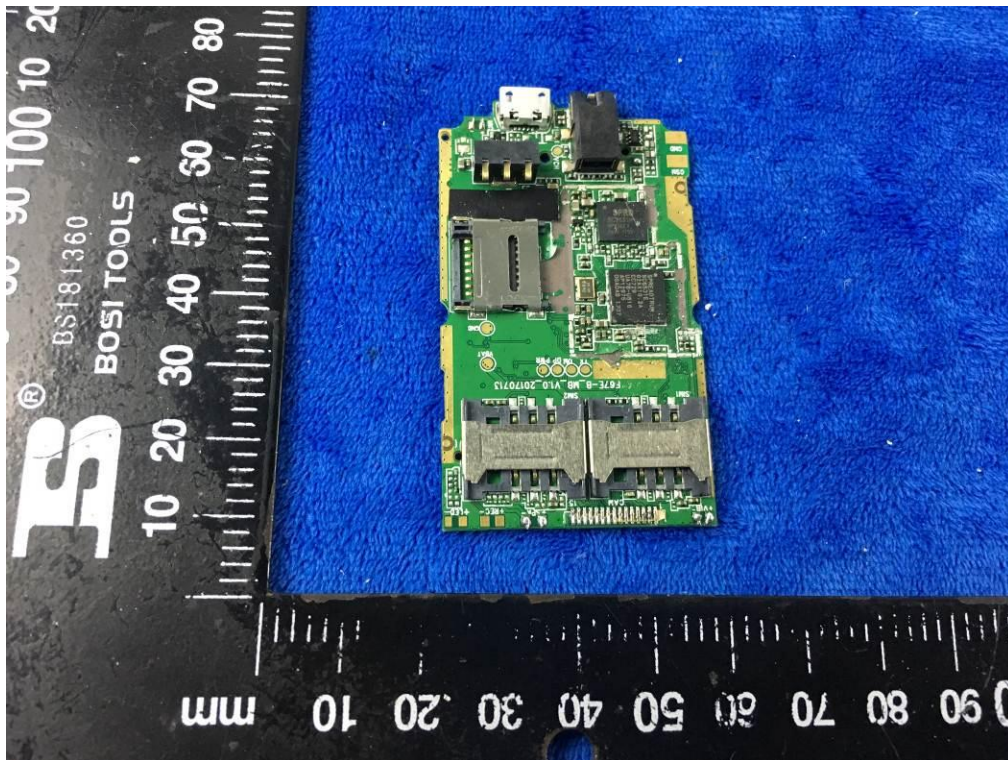
Battery - Rear View



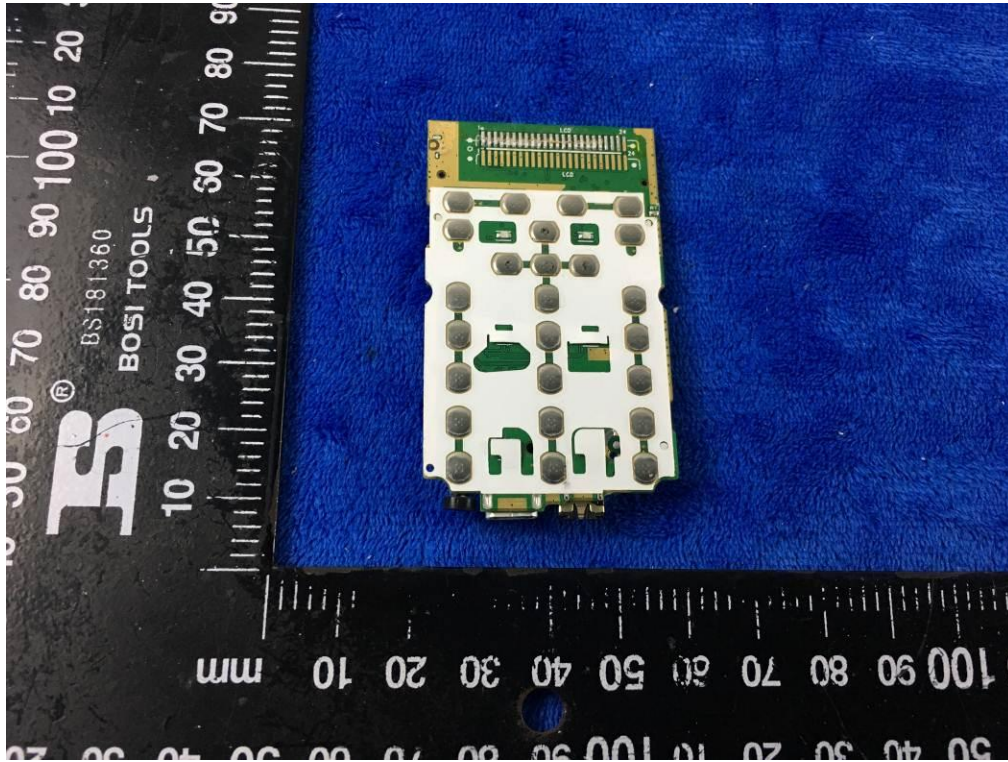
Mainboard with Shielding - Front View



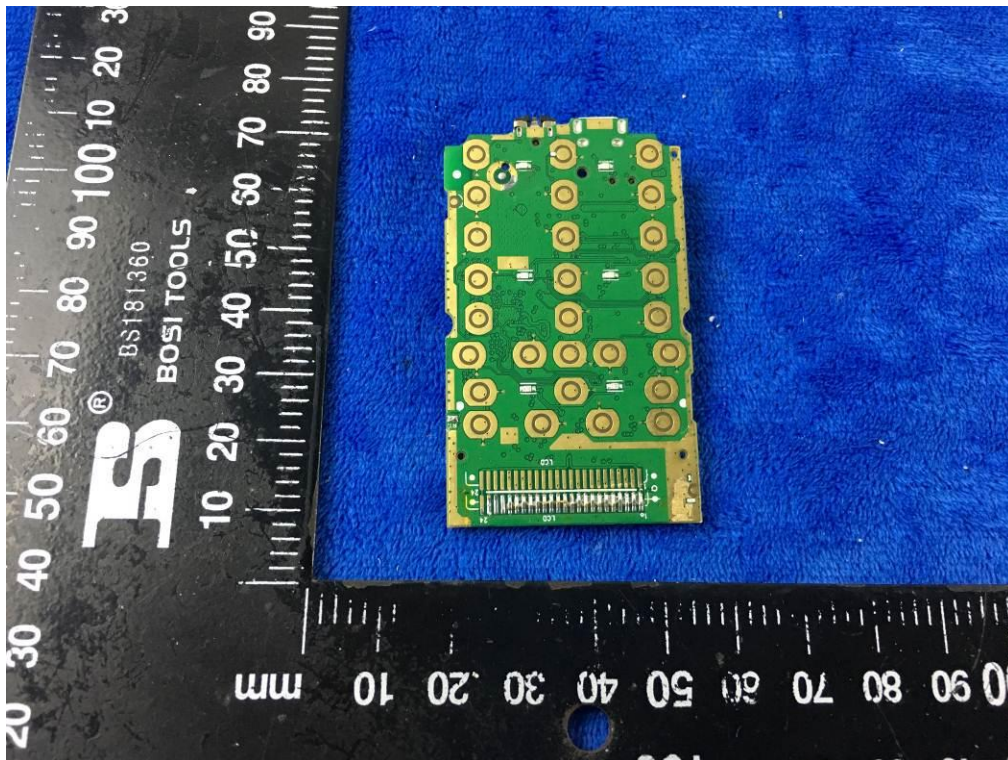
Mainboard without Shielding - Front View



Mainboard with Shielding – Rear View

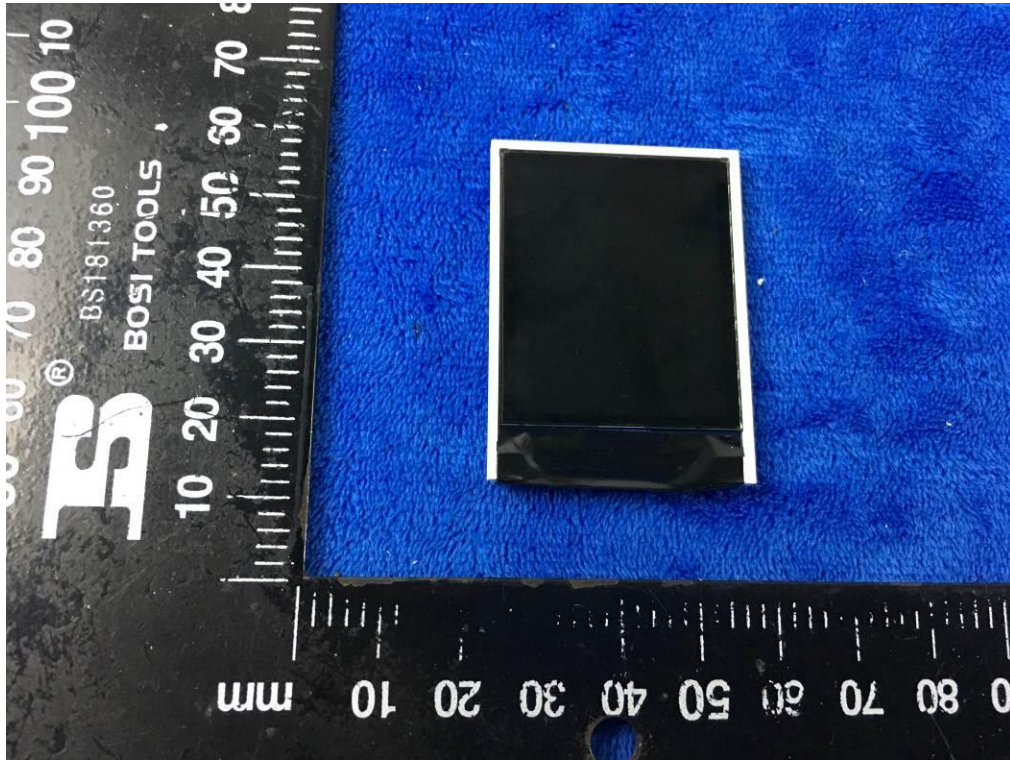


Mainboard without Shielding – Rear View





LCD – Front View



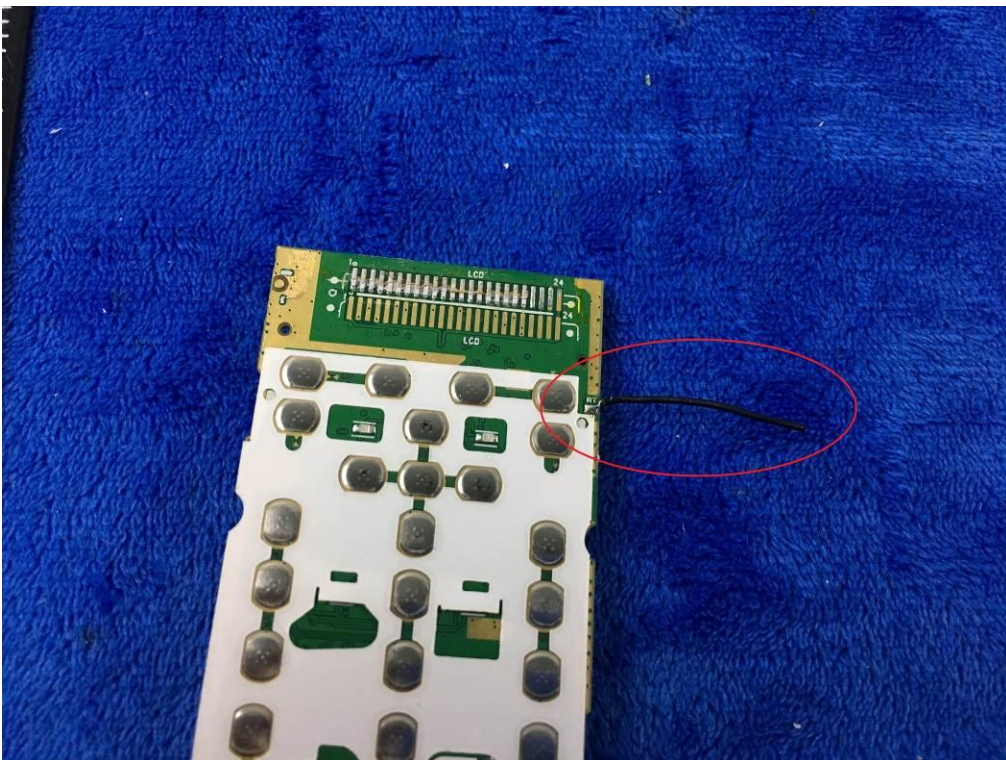
LCD – Rear View



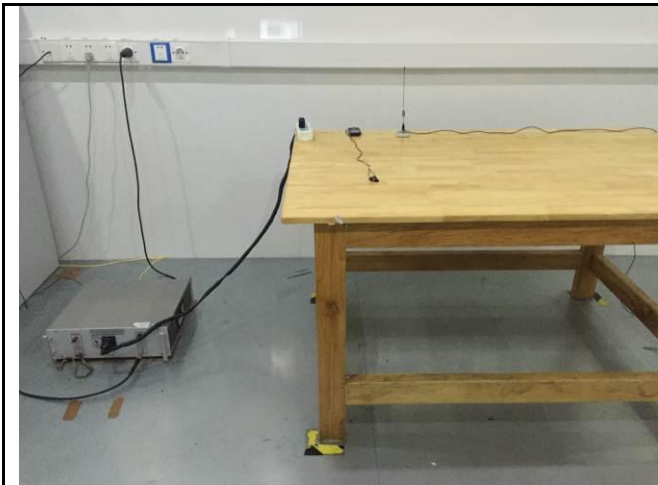
GSM/PCS Antenna View



BT - Antenna View



**Annex B.iii. Photograph: Test Setup Photo**



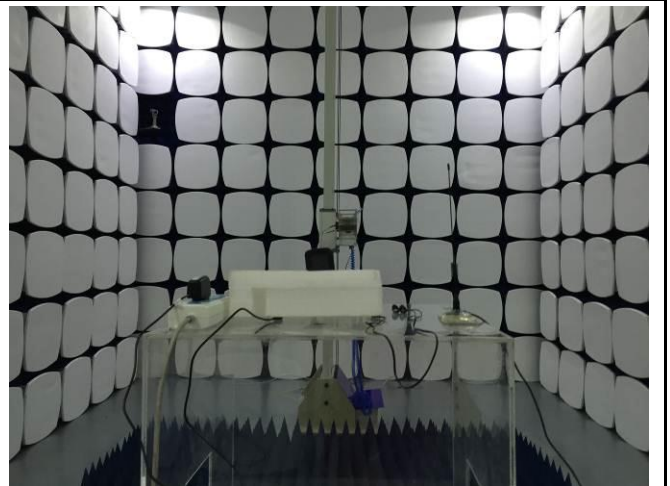
Conducted Emissions Test Setup Front View



Conducted Emissions Test Setup Side View



Radiated Spurious Emissions Test Setup Below 1GHz

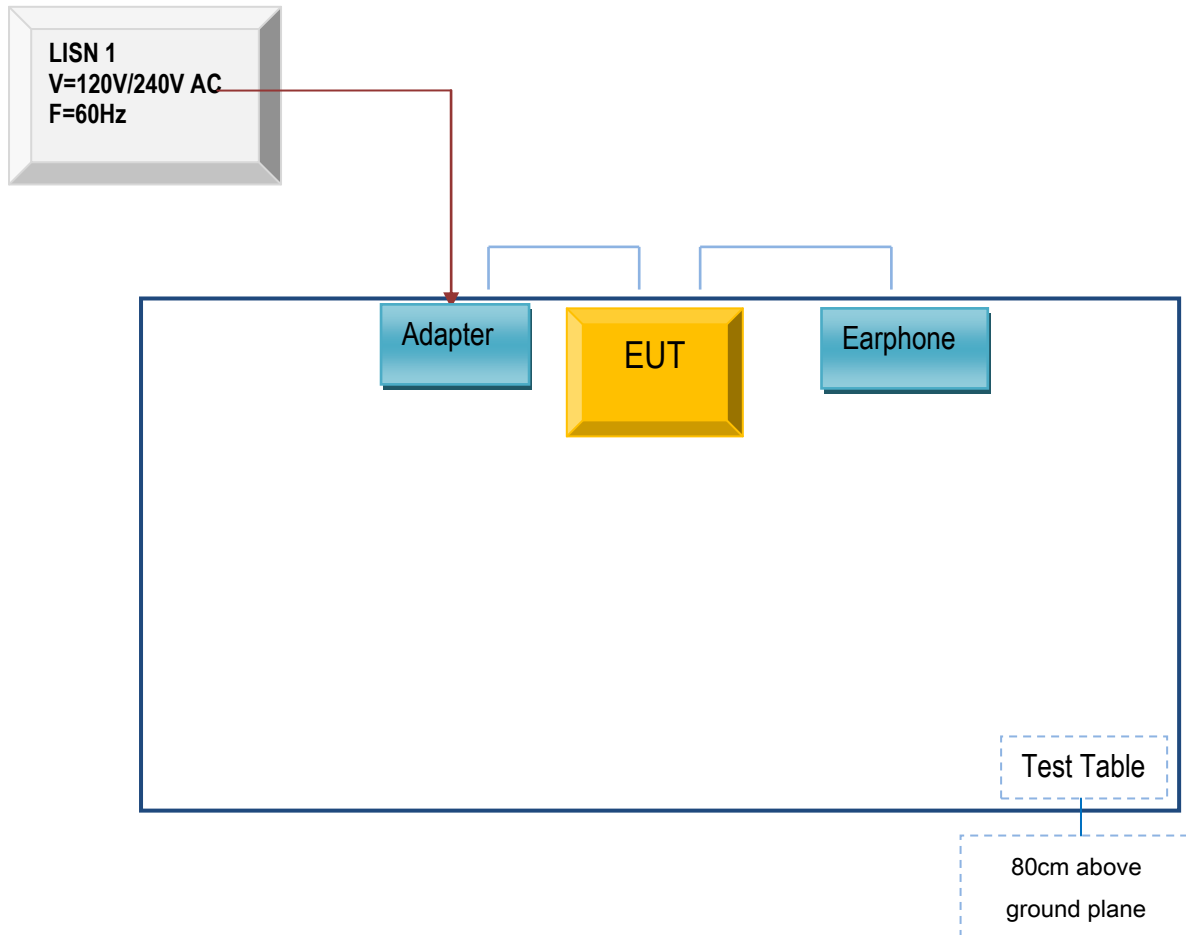


Radiated Spurious Emissions Test Setup Above  
1GHz

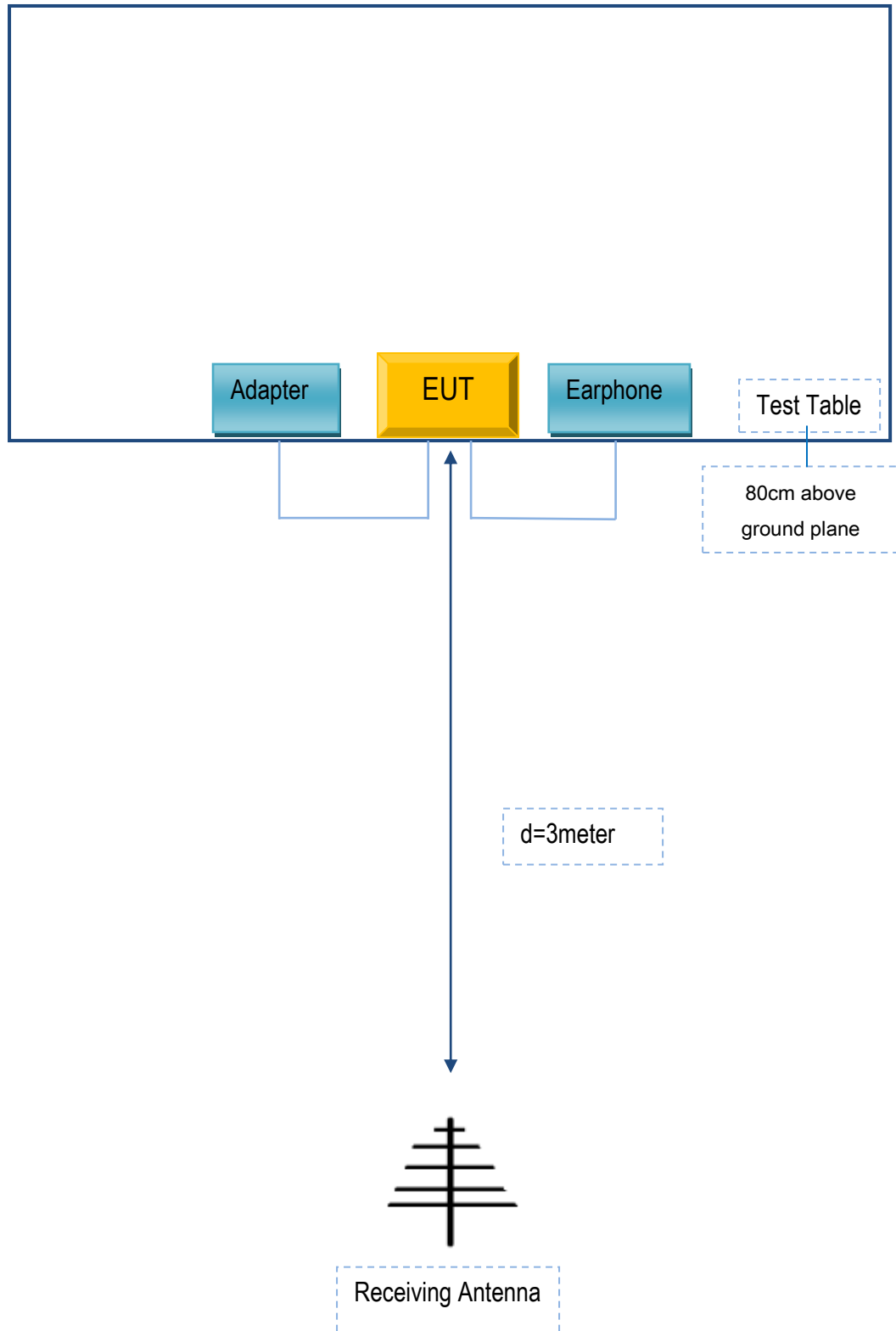
## Annex C. TEST SETUP AND SUPPORTING EQUIPMENT

### Annex C.ii. TEST SET UP BLOCK

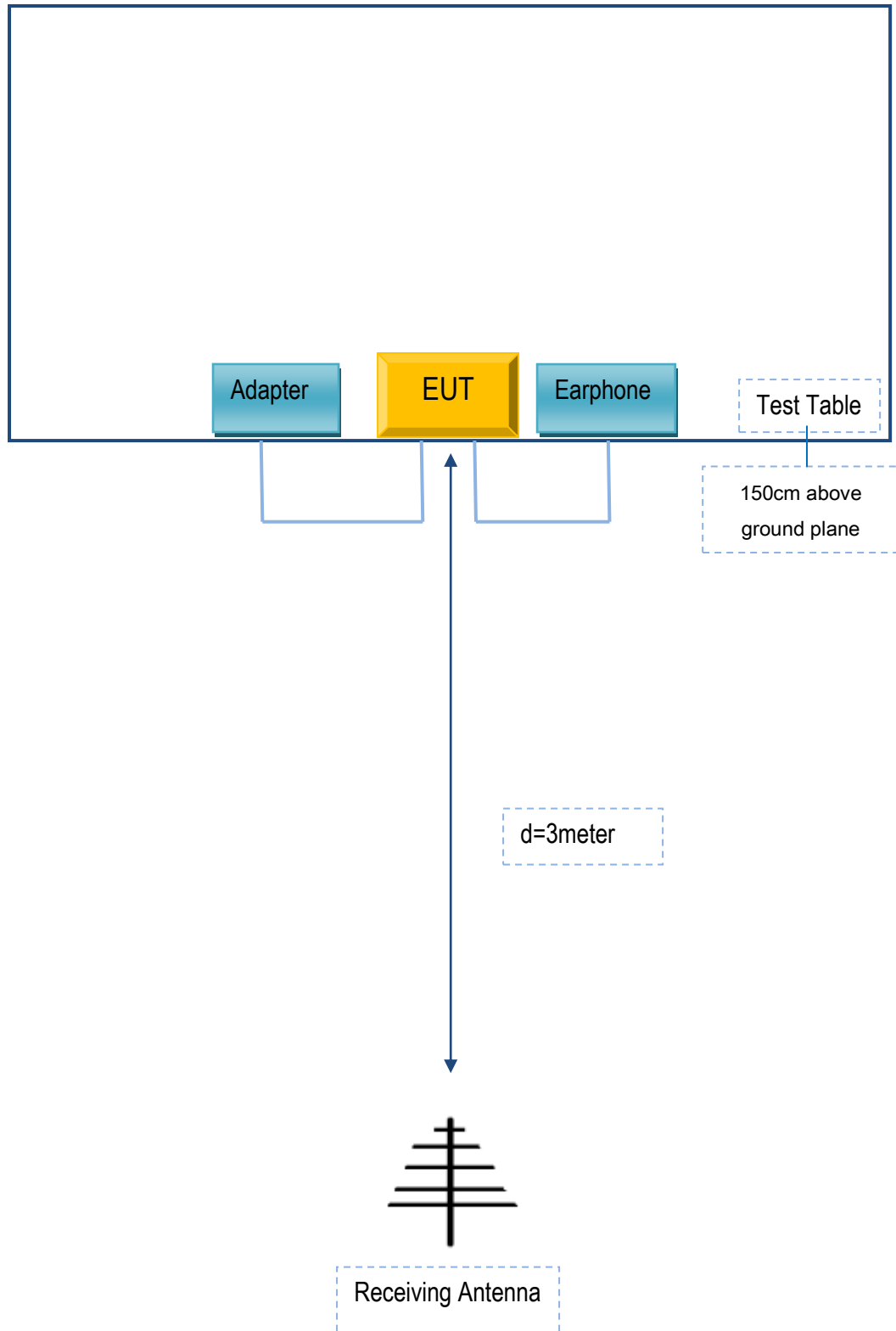
#### Block Configuration Diagram for AC Line Conducted Emissions



Block Configuration Diagram for Radiated Emissions ( Below 1GHz ) .



Block Configuration Diagram for Radiated Emissions ( Above 1GHz ) .



## Annex C. ii. SUPPORTING EQUIPMENT DESCRIPTION

The following is a description of supporting equipment and details of cables used with the EUT.

### Supporting Equipment:

Manufacturer	Equipment Description	Model	Serial No
MOVILTELCO TRADE, S.L	Adapter	M14D	N/A
MOVILTELCO TRADE, S.L	Earphone	M14D	N/A

### Supporting Cable:

Cable type	Shield Type	Ferrite Core	Length	Serial No
USB Cable	Un-shielding	No	0.8m	N/A

Test Report	17071153-FCC-R2
Page	66 of 67

## Annex D. User Manual / Block Diagram / Schematics / Partlist

Please see the attachment



Test Report	17071153-FCC-R2
Page	67 of 67

## Annex E. DECLARATION OF SIMILARITY

N/A