


EMC TEST REPORT



Report No.: 17070294-FCC-E

Supersede Report No: N/A

Applicant	MOVILTELCO TRADE, S.L.	
Product Name	Mobile phone	
Model No.	L402	
Serial No.	N/A	
Test Standard	FCC Part 15 Subpart B Class B:2016, ANSI C63.4: 2014	
Test Date	May 04 to 21, 2017	
Issue Date	May 22, 2017	
Test Result	<input checked="" type="checkbox"/> Pass <input type="checkbox"/> Fail	
Equipment complied with the specification	<input checked="" type="checkbox"/>	
Equipment did not comply with the specification	<input type="checkbox"/>	
<i>Evans He</i>	<i>David Huang</i>	
Evans He Test Engineer	David Huang Checked By	
This test report may be reproduced in full only Test result presented in this test report is applicable to the tested sample only		

Issued by:

SIEMIC (SHENZHEN-CHINA) LABORATORIES

Zone A, Floor 1, Building 2 Wan Ye Long Technology Park

South Side of Zhoushi Road, Bao' an District, Shenzhen, Guangdong China 518108

Phone: +86 0755 2601 4629801 Email: China@siemic.com.cn

Laboratories Introduction

SIEMIC, headquartered in the heart of Silicon Valley, with superior facilities in US and Asia, is one of the leading independent testing and certification facilities providing customers with one-stop shop services for Compliance Testing and Global Certifications.



In addition to testing and certification, SIEMIC provides initial design reviews and compliance management throughout a project. Our extensive experience with China, Asia Pacific, North America, European, and International compliance requirements, assures the fastest, most cost effective way to attain regulatory compliance for the global markets.

Accreditations for Conformity Assessment

Country/Region	Scope
USA	EMC, RF/Wireless, SAR, Telecom
Canada	EMC, RF/Wireless, SAR, Telecom
Taiwan	EMC, RF, Telecom, SAR, Safety
Hong Kong	RF/Wireless, SAR, Telecom
Australia	EMC, RF, Telecom, SAR, Safety
Korea	EMI, EMS, RF, SAR, Telecom, Safety
Japan	EMI, RF/Wireless, SAR, Telecom
Singapore	EMC, RF, SAR, Telecom
Europe	EMC, RF, SAR, Telecom, Safety

Test Report	17070294-FCC-E
Page	3 of 37

This page has been left blank intentionally.

CONTENTS

1. REPORT REVISION HISTORY	5
2. CUSTOMER INFORMATION	5
3. TEST SITE INFORMATION	5
4. EQUIPMENT UNDER TEST (EUT) INFORMATION	6
5. TEST SUMMARY	8
6. MEASUREMENTS, EXAMINATION AND DERIVED RESULTS	9
6.1 AC POWER LINE CONDUCTED EMISSIONS.....	9
6.2 RADIATED EMISSIONS.....	15
ANNEX A. TEST INSTRUMENT.....	20
ANNEX B. EUT AND TEST SETUP PHOTOGRAPHS.....	21
ANNEX C. TEST SETUP AND SUPPORTING EQUIPMENT.....	33
ANNEX D. USER MANUAL / BLOCK DIAGRAM / SCHEMATICS / PARTLIST	36
ANNEX E. DECLARATION OF SIMILARITY.....	37

1. Report Revision History

Report No.	Report Version	Description	Issue Date
17070294-FCC-E	NONE	Original	May 22, 2017

2. Customer information

Applicant Name	MOVILTELCO TRADE, S.L.
Applicant Add	Street: ABTAO,25-1Floor A-office MADRID-SPAIN
Manufacturer	MOVILTELCO TRADE, S.L.
Manufacturer Add	Street: ABTAO,25-1Floor A-office MADRID-SPAIN

3. Test site information

Lab performing tests	SIEMIC (Shenzhen-China) LABORATORIES
Lab Address	Zone A, Floor 1, Building 2 Wan Ye Long Technology Park South Side of Zhoushi Road, Bao' an District, Shenzhen, Guangdong China 518108
FCC Test Site No.	718246
IC Test Site No.	4842E-1
Test Software of Radiated Emission	Radiated Emission Program-To Shenzhen v2.0
Test Software of Conducted Emission	EZ-EMC(ver.lcp-03A1)

4. Equipment under Test (EUT) Information

Description of EUT:	Mobile phone
Main Model:	L402
Serial Model:	N/A
Antenna Gain:	GSM850:0dBi PCS1900: 0dBi UMTS-FDD Band V: 0dBi UMTS-FDD Band II: 0dBi LTE Band II: 0dBi WIFI: 0dBi Bluetooth: 0dBi GPS: 0dBi
Antenna Type:	PIFA antenna
Input Power:	Adapter: Model: L402 Input: AC100-240V~50/60Hz,0.15A Output: DC 5.0V,500mA Battery : Model: L402 Spec: 3.7V,5.18WH(min/typ) Voltage of charge limited:4.2V
Equipment Category :	JBP
Type of Modulation:	GSM / GPRS: GMSK EGPRS: GMSK,8PSK UMTS-FDD: QPSK LTE Band: QPSK, 16QAM 802.11b/g/n: DSSS, OFDM Bluetooth: GFSK, π /4DQPSK, 8DPSK GPS:BPSK

GSM850 TX: 824.2 ~ 848.8 MHz; RX: 869.2 ~ 893.8 MHz
 PCS1900 TX: 1850.2 ~ 1909.8 MHz; RX: 1930.2 ~ 1989.8 MHz
 UMTS-FDD Band V TX: 826.4 ~ 846.6 MHz; RX: 871.4 ~ 891.6 MHz
 UMTS-FDD Band II TX: 1852.4 ~ 1907.6 MHz;
 RF Operating Frequency (ies): RX: 1932.4 ~ 1987.6 MHz
 LTE Band II TX: 1850.7~ 1909.3 MHz; RX : 1930.7 ~ 1989.3 MHz
 WIFI: 802.11b/g/n(20M): 2412-2462 MHz
 Bluetooth: 2402-2480 MHz
 GPS: 1575.42 MHz

GSM 850: 124CH
 PCS1900: 299CH
 UMTS-FDD Band V : 102CH
 Number of Channels: UMTS-FDD Band II : 277CH
 WIFI :802.11b/g/n(20M): 11CH
 Bluetooth: 79CH
 GPS:1CH

Port: USB Port, Earphone Port

Trade Name : Mtt/movistar

FCC ID: 2ACQKTELCO012

Date EUT received: May 03, 2017

Test Date(s): May 04 to 21, 2017

5. Test Summary

The product was tested in accordance with the following specifications.

All testing has been performed according to below product classification:

FCC Rules	Description of Test	Result
§15.107; ANSI C63.4: 2014	AC Power Line Conducted Emissions	Compliance
§15.109; ANSI C63.4: 2014	Radiated Emissions	Compliance

Measurement Uncertainty

Parameter	Uncertainty
AC Power Line Conducted Emissions (150kHz~30MHz)	±3.11dB
Radiated Emission(30MHz~1GHz)	±5.12dB
Radiated Emission(1GHz~6GHz)	±5.34dB

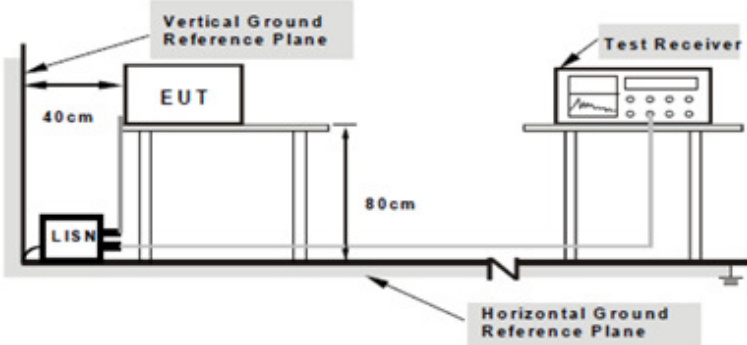
6. Measurements, Examination And Derived Results

6.1 AC Power Line Conducted Emissions

Temperature	21°C
Relative Humidity	53%
Atmospheric Pressure	1011mbar
Test date :	May 05, 2017
Tested By :	Evans He

Requirement(s):

Spec	Item	Requirement	Applicable														
47CFR§15.107	a)	<p>For Low-power radio-frequency devices that is designed to be connected to the public utility (AC) power line, the radio frequency voltage that is conducted back onto the AC power line on any frequency or frequencies, within the band 150 kHz to 30 MHz, shall not exceed the limits in the following table, as measured using a 50 [mu] H/50 ohms line impedance stabilization network (LISN). The lower limit applies at the boundary between the frequencies ranges.</p> <table border="1"> <thead> <tr> <th rowspan="2">Frequency ranges (MHz)</th> <th colspan="2">Limit (dBµV)</th> </tr> <tr> <th>QP</th> <th>Average</th> </tr> </thead> <tbody> <tr> <td>0.15 ~ 0.5</td> <td>66 – 56</td> <td>56 – 46</td> </tr> <tr> <td>0.5 ~ 5</td> <td>56</td> <td>46</td> </tr> <tr> <td>5 ~ 30</td> <td>60</td> <td>50</td> </tr> </tbody> </table>	Frequency ranges (MHz)	Limit (dBµV)		QP	Average	0.15 ~ 0.5	66 – 56	56 – 46	0.5 ~ 5	56	46	5 ~ 30	60	50	<input checked="" type="checkbox"/>
Frequency ranges (MHz)	Limit (dBµV)																
	QP	Average															
0.15 ~ 0.5	66 – 56	56 – 46															
0.5 ~ 5	56	46															
5 ~ 30	60	50															

Test Setup	 <p style="text-align: center;"> Note: 1.Support units were connected to second LISN. 2.Both of LISNs (AMN) are 80cm from EUT and at least 80cm from other units and other metal planes support units. </p>
------------	---

Procedure	<ol style="list-style-type: none"> The EUT and supporting equipment were set up in accordance with the requirements of the standard on top of a 1.5m x 1m x 0.8m high, non-metallic table. The power supply for the EUT was fed through a 50Ω /50mH EUT LISN, connected to filtered mains.
-----------	--

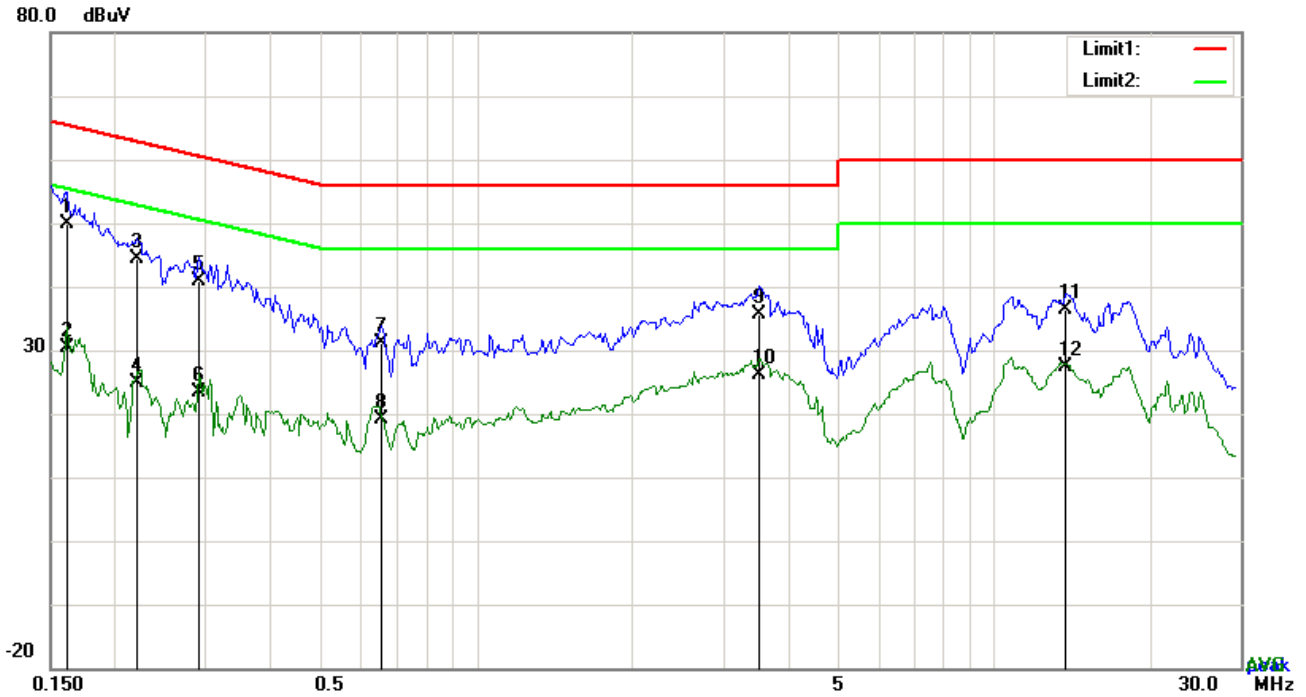
Test Report	17070294-FCC-E
Page	10 of 37

	<ol style="list-style-type: none"> 3. The RF OUT of the EUT LISN was connected to the EMI test receiver via a low-loss coaxial cable. 4. All other supporting equipment were powered separately from another main supply. 5. The EUT was switched on and allowed to warm up to its normal operating condition. 6. A scan was made on the NEUTRAL line (for AC mains) or Earth line (for DC power) over the required frequency range using an EMI test receiver. 7. High peaks, relative to the limit line, The EMI test receiver was then tuned to the selected frequencies and the necessary measurements made with a receiver bandwidth setting of 10 kHz. 8. Step 7 was then repeated for the LIVE line (for AC mains) or DC line (for DC power).
Remark	
Result	<input checked="" type="checkbox"/> Pass <input type="checkbox"/> Fail

Test Data Yes N/A

Test Plot Yes (See below) N/A

Test Mode : USB Mode

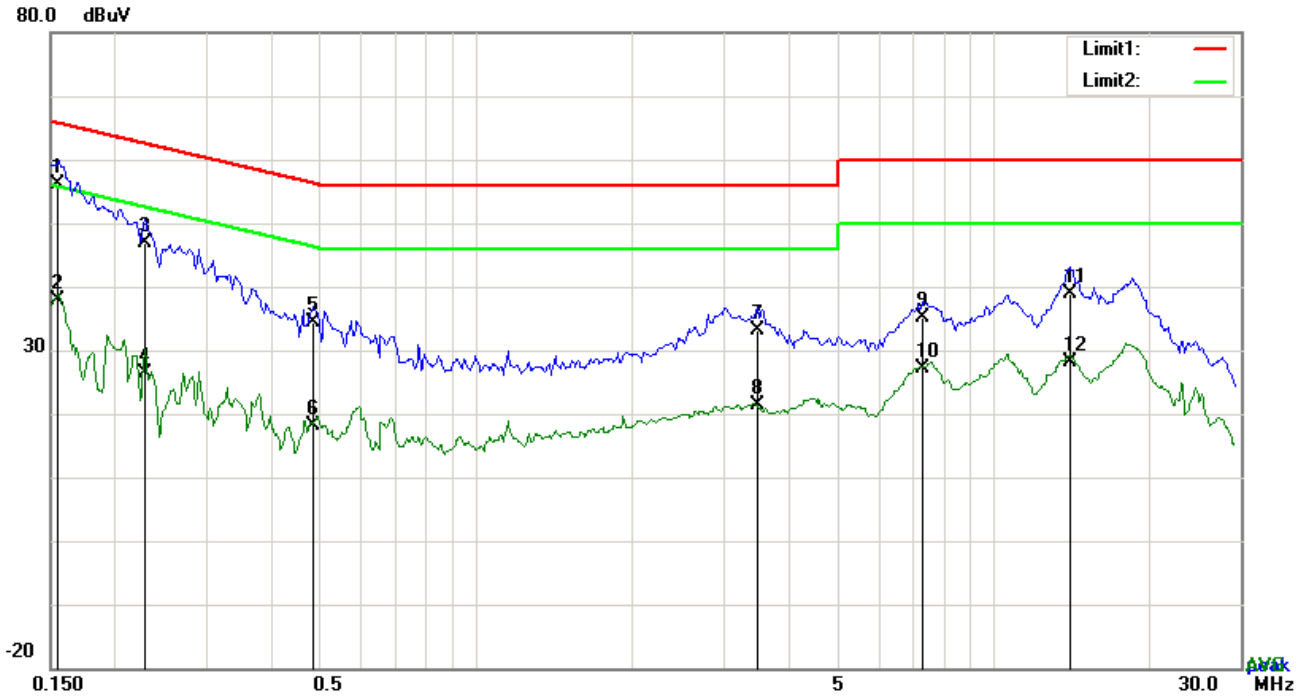


Test Data

Phase Line Plot at 120Vac, 60Hz

No.	P/L	Frequency	Reading	Detector	Corrected	Result	Limit	Margin
		(MHz)	(dBuV)		(dB)	(dBuV)	(dBuV)	(dB)
1	L1	0.1617	39.79	QP	10.03	49.82	65.38	-15.56
2	L1	0.1617	20.36	AVG	10.03	30.39	55.38	-24.99
3	L1	0.2202	34.36	QP	10.03	44.39	62.81	-18.42
4	L1	0.2202	14.91	AVG	10.03	24.94	52.81	-27.87
5	L1	0.2904	30.86	QP	10.03	40.89	60.51	-19.62
6	L1	0.2904	13.42	AVG	10.03	23.45	50.51	-27.06
7	L1	0.6570	21.15	QP	10.03	31.18	56.00	-24.82
8	L1	0.6570	9.05	AVG	10.03	19.08	46.00	-26.92
9	L1	3.5109	25.62	QP	10.06	35.68	56.00	-20.32
10	L1	3.5109	15.96	AVG	10.06	26.02	46.00	-19.98
11	L1	13.7328	26.07	QP	10.21	36.28	60.00	-23.72
12	L1	13.7328	17.11	AVG	10.21	27.32	50.00	-22.68

Test Mode :	USB Mode
--------------------	-----------------

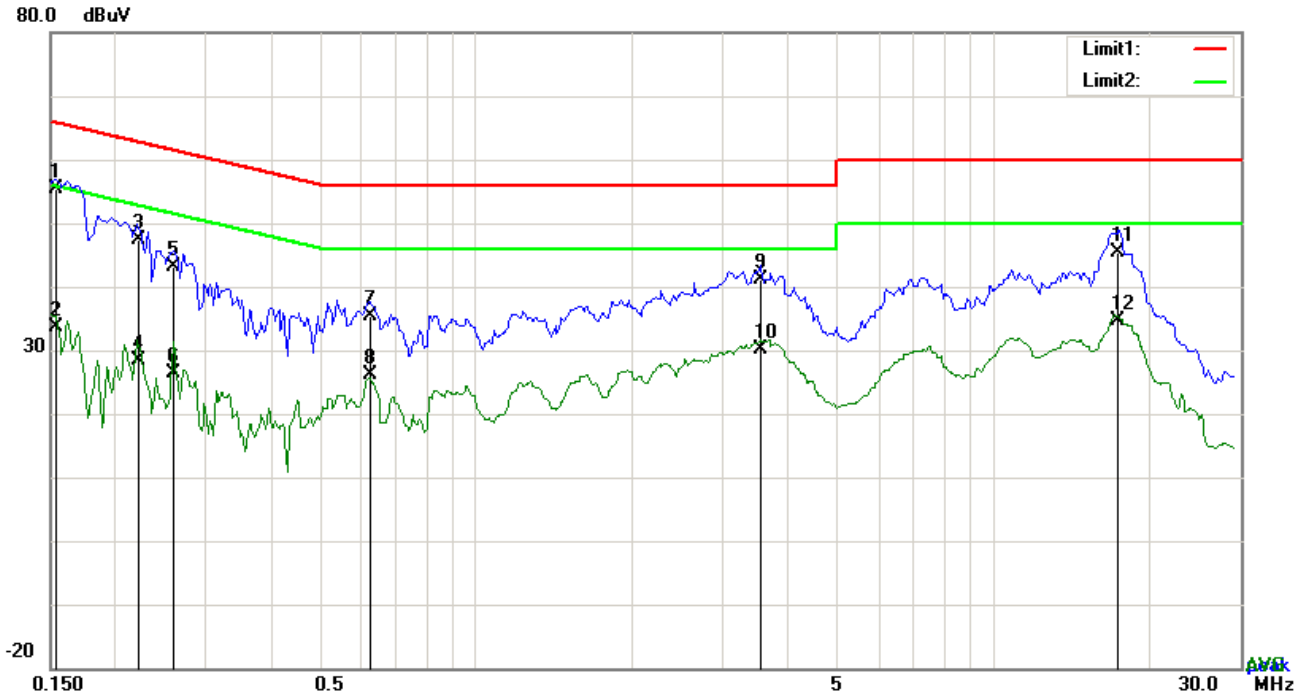


Test Data

Phase Neutral Plot at 120Vac, 60Hz

No.	P/L	Frequency (MHz)	Reading (dBuV)	Detector	Corrected (dB)	Result (dBuV)	Limit (dBuV)	Margin (dB)
1	N	0.1548	46.05	QP	10.02	56.07	65.74	-9.67
2	N	0.1548	27.78	AVG	10.02	37.80	55.74	-17.94
3	N	0.2280	36.89	QP	10.02	46.91	62.52	-15.61
4	N	0.2280	16.40	AVG	10.02	26.42	52.52	-26.10
5	N	0.4815	24.34	QP	10.02	34.36	56.31	-21.95
6	N	0.4815	8.22	AVG	10.02	18.24	46.31	-28.07
7	N	3.5031	23.16	QP	10.06	33.22	56.00	-22.78
8	N	3.5031	11.20	AVG	10.06	21.26	46.00	-24.74
9	N	7.2978	25.05	QP	10.10	35.15	60.00	-24.85
10	N	7.2978	16.98	AVG	10.10	27.08	50.00	-22.92
11	N	13.9980	28.78	QP	10.19	38.97	60.00	-21.03
12	N	13.9980	18.03	AVG	10.19	28.22	50.00	-21.78

Test Mode :	USB Mode
--------------------	-----------------

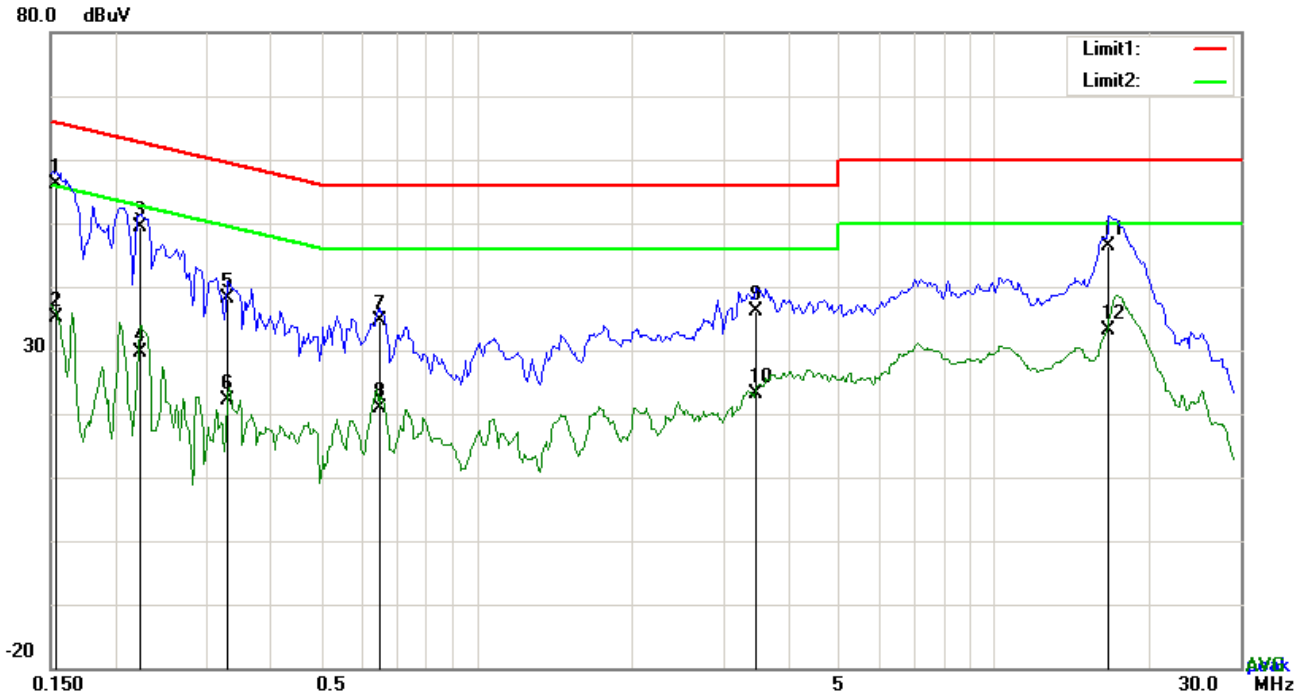


Test Data

Phase Line Plot at 240Vac, 60Hz

No.	P/L	Frequency	Reading	Detector	Corrected	Result	Limit	Margin
		(MHz)	(dBuV)		(dB}	(dBuV)	(dBuV)	(dB)
1	L1	0.1539	45.45	QP	10.03	55.48	65.79	-10.31
2	L1	0.1539	23.67	AVG	10.03	33.70	55.79	-22.09
3	L1	0.2220	37.38	QP	10.03	47.41	62.74	-15.33
4	L1	0.2220	18.30	AVG	10.03	28.33	52.74	-24.41
5	L1	0.2592	33.16	QP	10.03	43.19	61.46	-18.27
6	L1	0.2592	16.45	AVG	10.03	26.48	51.46	-24.98
7	L1	0.6258	25.33	QP	10.03	35.36	56.00	-20.64
8	L1	0.6258	16.07	AVG	10.03	26.10	46.00	-19.90
9	L1	3.5304	31.18	QP	10.06	41.24	56.00	-14.76
10	L1	3.5304	20.00	AVG	10.06	30.06	46.00	-15.94
11	L1	17.4612	35.04	QP	10.26	45.30	60.00	-14.70
12	L1	17.4612	24.45	AVG	10.26	34.71	50.00	-15.29

Test Mode :	USB Mode
--------------------	-----------------



Test Data

Phase Neutral Plot at 240Vac, 60Hz

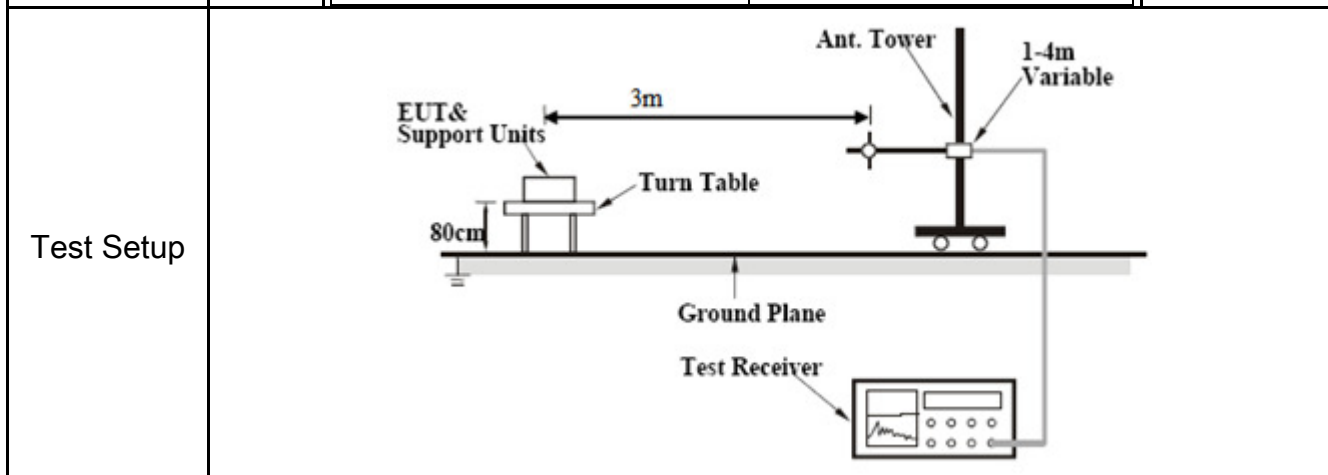
No.	P/L	Frequency	Reading	Detector	Corrected	Result	Limit	Margin
		(MHz)	(dBuV)		(dB}	(dBuV)	(dBuV)	(dB)
1	N	0.1540	46.12	QP	10.02	56.14	65.78	-9.64
2	N	0.1540	25.07	AVG	10.02	35.09	55.78	-20.69
3	N	0.2241	39.45	QP	10.02	49.47	62.67	-13.20
4	N	0.2241	19.69	AVG	10.02	29.71	52.67	-22.96
5	N	0.3303	28.17	QP	10.02	38.19	59.44	-21.25
6	N	0.3303	12.04	AVG	10.02	22.06	49.44	-27.38
7	N	0.6492	24.49	QP	10.02	34.51	56.00	-21.49
8	N	0.6492	10.98	AVG	10.02	21.00	46.00	-25.00
9	N	3.4641	26.12	QP	10.05	36.17	56.00	-19.83
10	N	3.4641	13.19	AVG	10.05	23.24	46.00	-22.76
11	N	16.7319	36.21	QP	10.22	46.43	60.00	-13.57
12	N	16.7319	22.79	AVG	10.22	33.01	50.00	-16.99

6.2 Radiated Emissions

Temperature	21°C
Relative Humidity	53%
Atmospheric Pressure	1011mbar
Test date :	May 05, 2017
Tested By :	Evans He

Requirement(s):

Spec	Item	Requirement	Applicable										
47CFR§15.109(d)	a)	Except higher limit as specified elsewhere in other section, the emissions from the low-power radio-frequency devices shall not exceed the field strength levels specified in the following table and the level of any unwanted emissions shall not exceed the level of the fundamental emission. The tighter limit applies at the band edges	<input checked="" type="checkbox"/>										
		<table border="1"> <thead> <tr> <th>Frequency range (MHz)</th> <th>Field Strength ($\mu\text{V/m}$)</th> </tr> </thead> <tbody> <tr> <td>30 – 88</td> <td>100</td> </tr> <tr> <td>88 – 216</td> <td>150</td> </tr> <tr> <td>216 - 960</td> <td>200</td> </tr> <tr> <td>Above 960</td> <td>500</td> </tr> </tbody> </table>		Frequency range (MHz)	Field Strength ($\mu\text{V/m}$)	30 – 88	100	88 – 216	150	216 - 960	200	Above 960	500
		Frequency range (MHz)		Field Strength ($\mu\text{V/m}$)									
		30 – 88		100									
		88 – 216		150									
216 - 960	200												
Above 960	500												



Procedure	<ol style="list-style-type: none"> 1. The EUT was switched on and allowed to warm up to its normal operating condition. 2. The test was carried out at the selected frequency points obtained from the EUT characterization. Maximization of the emissions, was carried out by rotating the EUT, changing the antenna polarization, and adjusting the antenna height in the following manner: <ol style="list-style-type: none"> a. Vertical or horizontal polarization (whichever gave the higher emission level
-----------	---

	<p>over a full rotation of the EUT) was chosen.</p> <p>b. The EUT was then rotated to the direction that gave the maximum emission.</p> <p>c. Finally, the antenna height was adjusted to the height that gave the maximum emission.</p> <p>3. The resolution bandwidth and video bandwidth of test receiver/spectrum analyzer is 120 kHz for Quasiy Peak detection at frequency below 1GHz.</p> <p>4. The resolution bandwidth of test receiver/spectrum analyzer is 1MHz and video bandwidth is 3MHz with Peak detection for Peak measurement at frequency above 1GHz.</p> <p>The resolution bandwidth of test receiver/spectrum analyzer is 1MHz and the video bandwidth with Peak detection for Average Measurement as below at frequency above 1GHz.</p> <ul style="list-style-type: none"> ■ 1 kHz (Duty cycle < 98%) □ 10 Hz (Duty cycle > 98%) <p>5. Steps 2 and 3 were repeated for the next frequency point, until all selected frequency points were measured.</p>
Remark	
Result	<input checked="" type="checkbox"/> Pass <input type="checkbox"/> Fail

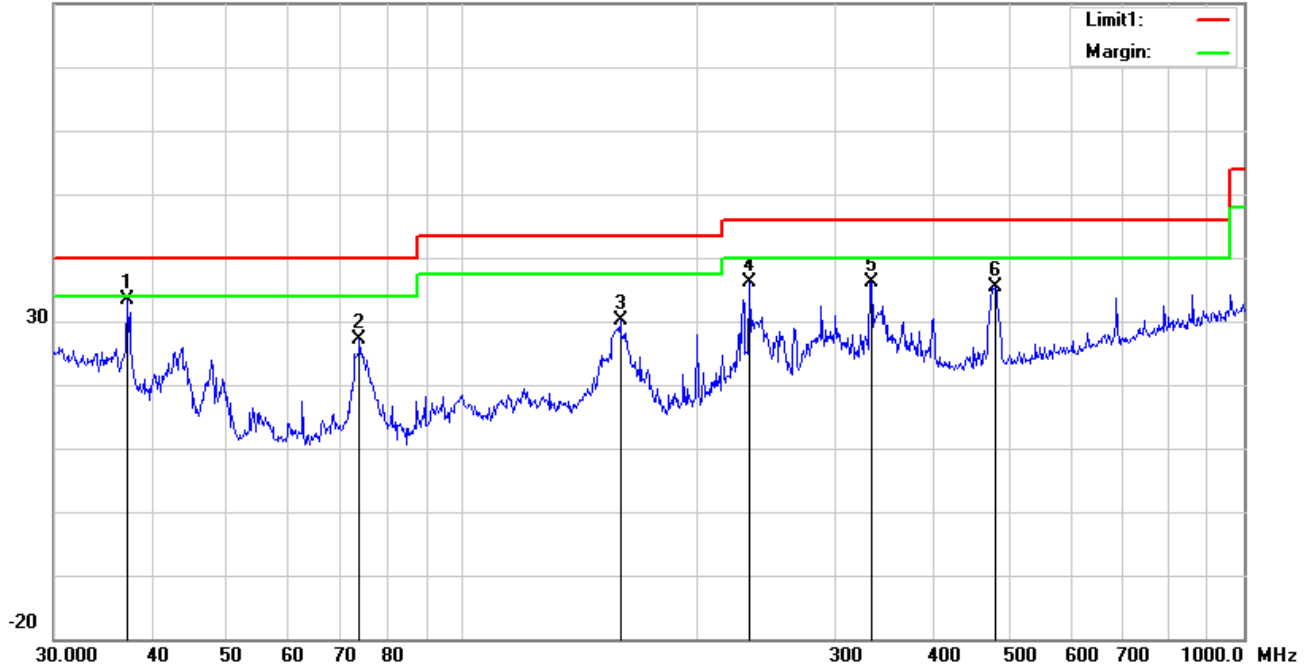
Test Data Yes N/A

Test Plot Yes (See below) N/A

Test Mode :	USB Mode
-------------	----------

Below 1GHz

80.0 dBuV/m

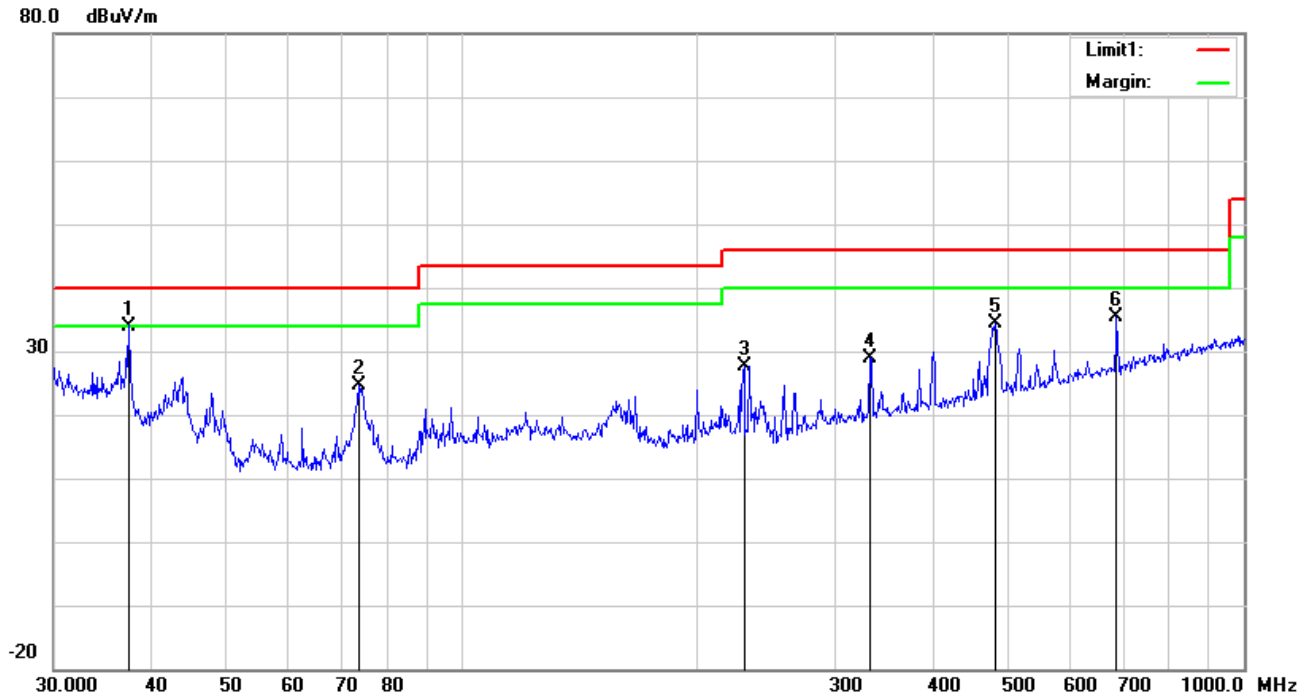


Test Data

Horizontal Polarity Plot @3m

No.	P/L	Frequency (MHz)	Reading (dBuV/m)	Detector	Ant_F (dB/m)	PA_G (dB)	Cab_L (dB)	Result (dBuV/m)	Limit (dBuV/m)	Margin (dB)	Height (cm)	Degree (°)
1	H	37.2855	38.91	peak	15.88	22.26	0.77	33.30	40.00	-6.70	100	309
2	H	73.8756	40.92	peak	7.72	22.40	0.96	27.20	40.00	-12.80	200	212
3	H	159.2251	38.40	peak	12.60	22.28	1.39	30.11	43.50	-13.39	100	118
4	H	232.5318	45.17	peak	11.64	22.32	1.64	36.13	46.00	-9.87	100	313
5	H	333.6867	41.99	peak	14.31	22.20	1.96	36.06	46.00	-9.94	100	255
6	H	480.5276	37.71	peak	17.31	21.85	2.31	35.48	46.00	-10.52	100	71

Below 1GHz



Test Data

Vertical Polarity Plot @3m

No.	P/L	Frequency	Reading	Detector	Ant_F	PA_G	Cab_L	Result	Limit	Margin	Height	Degree
		(MHz)	(dBuV/m)		(dB/m)	(dB)	(dB)	(dBuV/m)	(dBuV/m)	(dB)	(cm)	(°)
1	V	37.4165	39.50	QP	15.79	22.26	0.77	33.80	40.00	-6.20	100	53
2	V	73.6170	38.27	peak	7.73	22.39	0.97	24.58	40.00	-15.42	100	351
3	V	229.2931	36.62	peak	11.69	22.33	1.63	27.61	46.00	-18.39	100	194
4	V	332.5187	34.95	peak	14.28	22.20	1.95	28.98	46.00	-17.02	100	65
5	V	480.5276	36.63	peak	17.31	21.85	2.31	34.40	46.00	-11.60	100	281
6	V	687.1507	34.25	peak	20.06	21.39	2.56	35.48	46.00	-10.52	100	115

Above 1GHz

Frequency (MHz)	Read_level (dBµV/m)	Azimuth	Height (cm)	Polarity (H/V)	Level (dBµV/m)	Factors (dB)	Limit (dBµV/m)	Margin (dB)	Detector (PK/AV)
1010.808	69.16	46	100	V	50.65	-18.51	74	-23.35	PK
2066.1	72.74	155	100	V	58.43	-14.31	74	-15.57	PK
2951.232	72.24	87	100	V	59.66	-12.58	74	-14.34	PK
1014.437	70.63	189	200	H	52.13	-18.5	74	-21.87	PK
1584.838	73.89	244	100	H	57.32	-16.57	74	-16.68	PK
2431.997	72.96	166	100	H	59.21	-13.75	74	-14.79	PK

Note1: The highest frequency of the EUT is 2480 MHz, so the testing has been conformed to $5 \times 2480 \text{MHz} = 12,400 \text{MHz}$.

Note2: The frequency that above 3GHz is mainly from the environment noise.

Note3: The AV measurement performed, more than 20dB below limit so AV test data was not presented.

Annex A. TEST INSTRUMENT

Instrument	Model	Serial #	Cal Date	Cal Due	In use
AC Line Conducted Emissions					
EMI test receiver	ESCS30	8471241027	09/16/2016	09/15/2017	<input checked="" type="checkbox"/>
Line Impedance Stabilization Network	LI-125A	191106	09/24/2016	09/23/2017	<input checked="" type="checkbox"/>
Line Impedance Stabilization Network	LI-125A	191107	09/24/2016	09/23/2017	<input checked="" type="checkbox"/>
LISN	ISN T800	34373	09/24/2016	09/23/2017	<input checked="" type="checkbox"/>
Transient Limiter	LIT-153	531118	08/31/2016	08/30/2017	<input checked="" type="checkbox"/>
Radiated Emissions					
EMI test receiver	ESL6	100262	09/16/2016	09/15/2017	<input checked="" type="checkbox"/>
OPT 010 AMPLIFIER (0.1-1300MHz)	8447E	2727A02430	08/31/2016	08/30/2017	<input checked="" type="checkbox"/>
Microwave Preamplifier (1 ~ 26.5GHz)	8449B	3008A02402	03/23/2017	03/22/2018	<input checked="" type="checkbox"/>
Bilog Antenna (30MHz~6GHz)	JB6	A110712	09/20/2016	09/19/2017	<input checked="" type="checkbox"/>
Double Ridge Horn Antenna	AH-118	71259	09/23/2016	09/22/2017	<input checked="" type="checkbox"/>

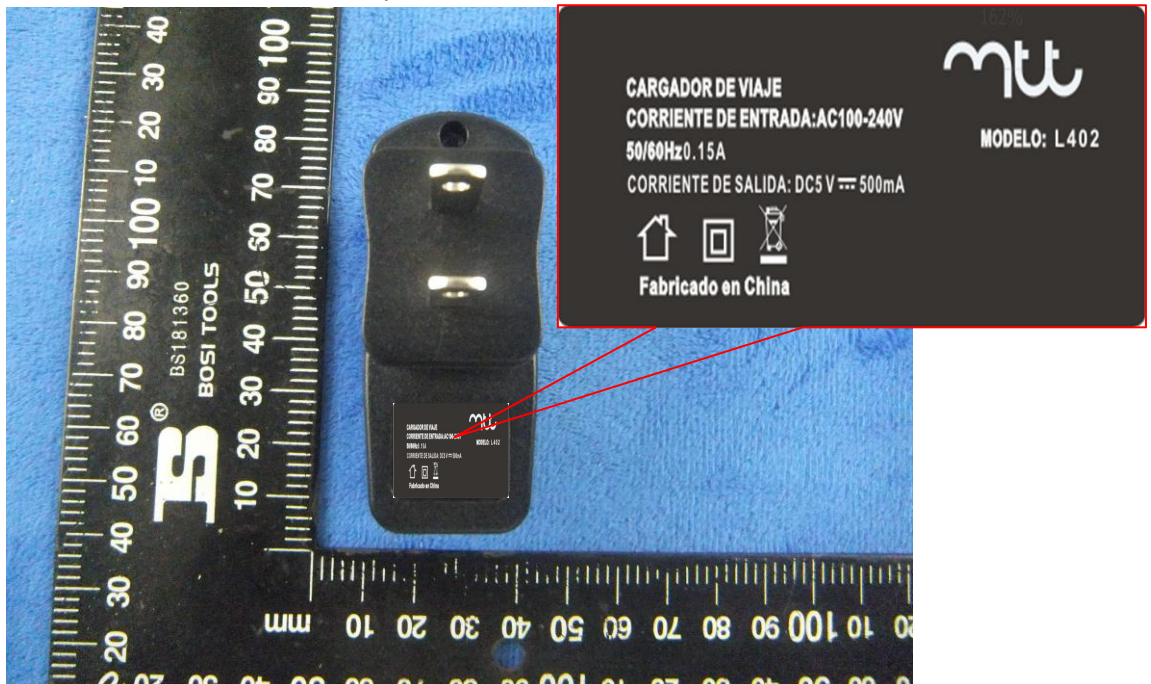
Annex B. EUT And Test Setup Photographs

Annex B.i. Photograph: EUT External Photo

Whole Package View



Adapter - Label View



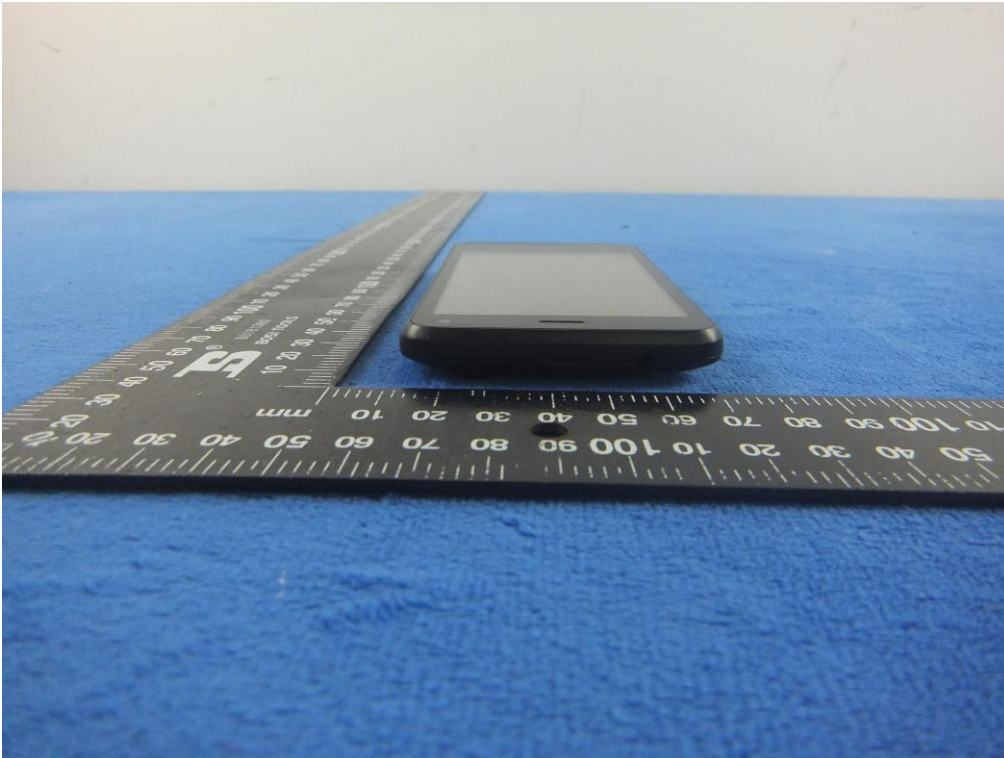
EUT - Front View



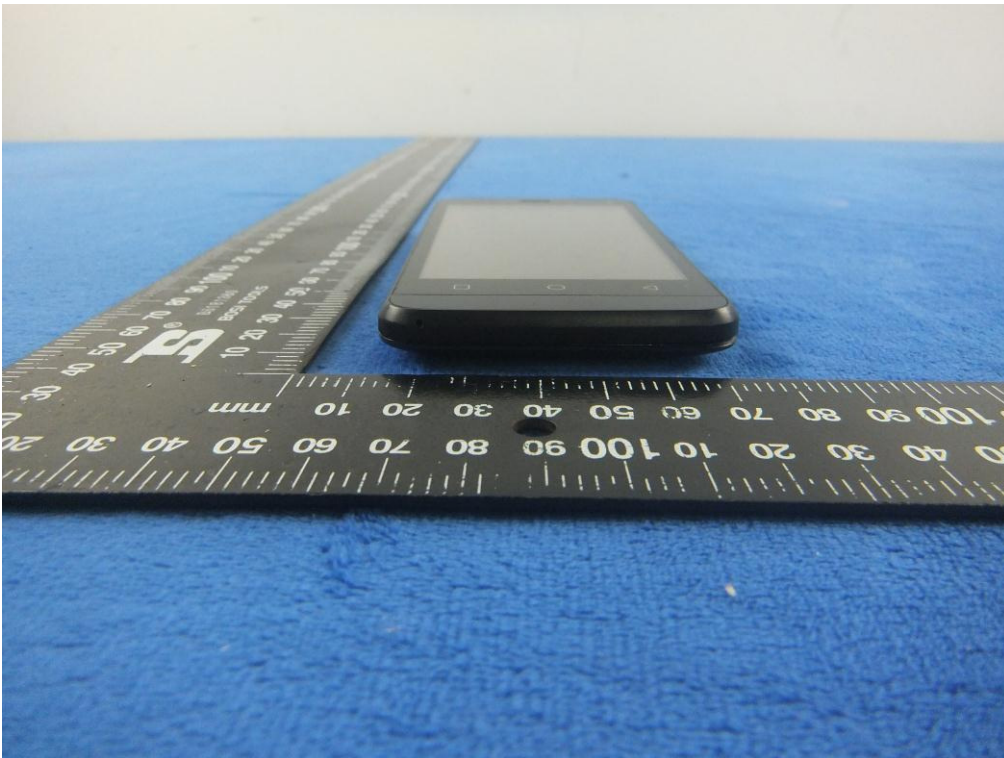
EUT - Rear View



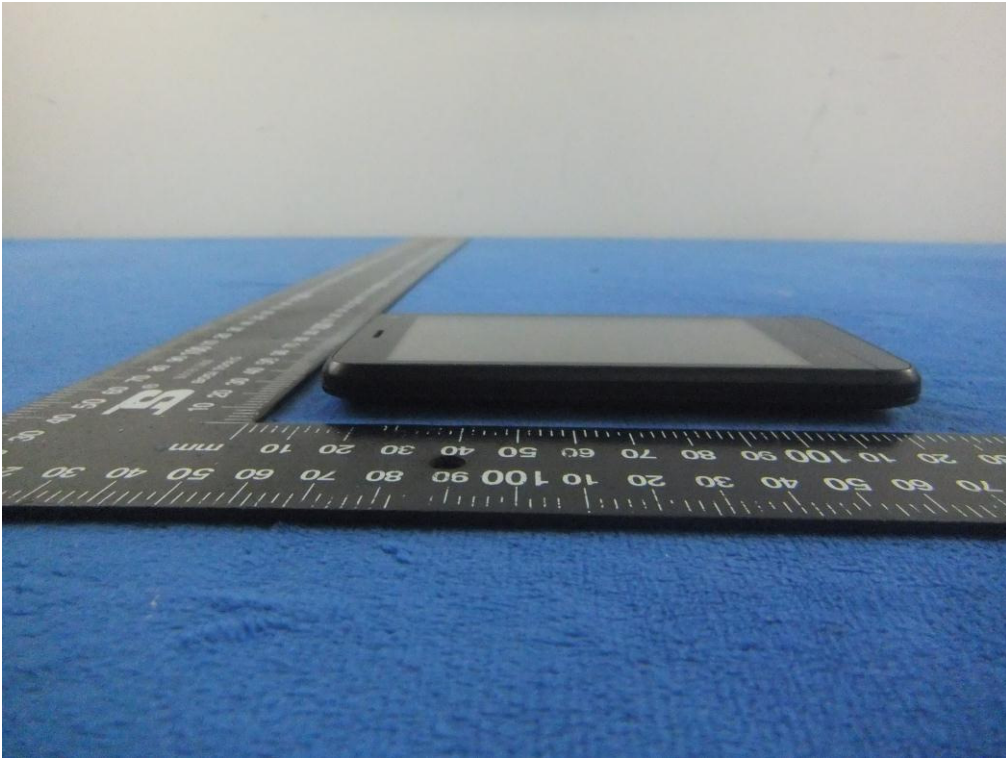
EUT - Top View



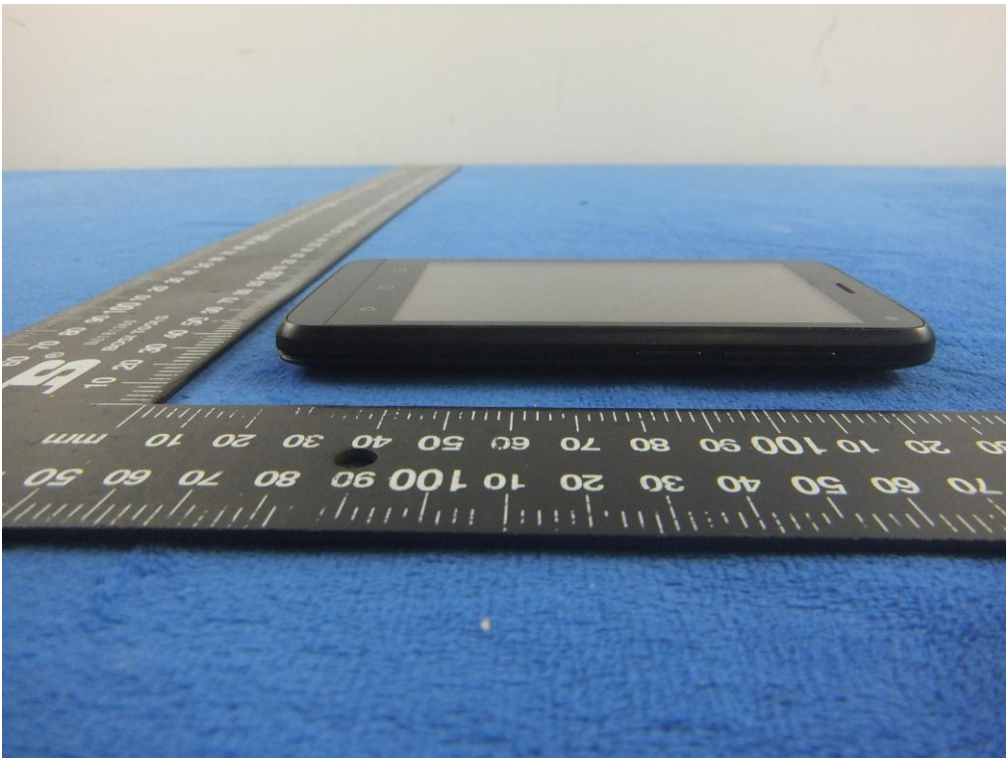
EUT - Bottom View



EUT - Left View



EUT - Right View



Annex B.ii. Photograph: EUT Internal Photo

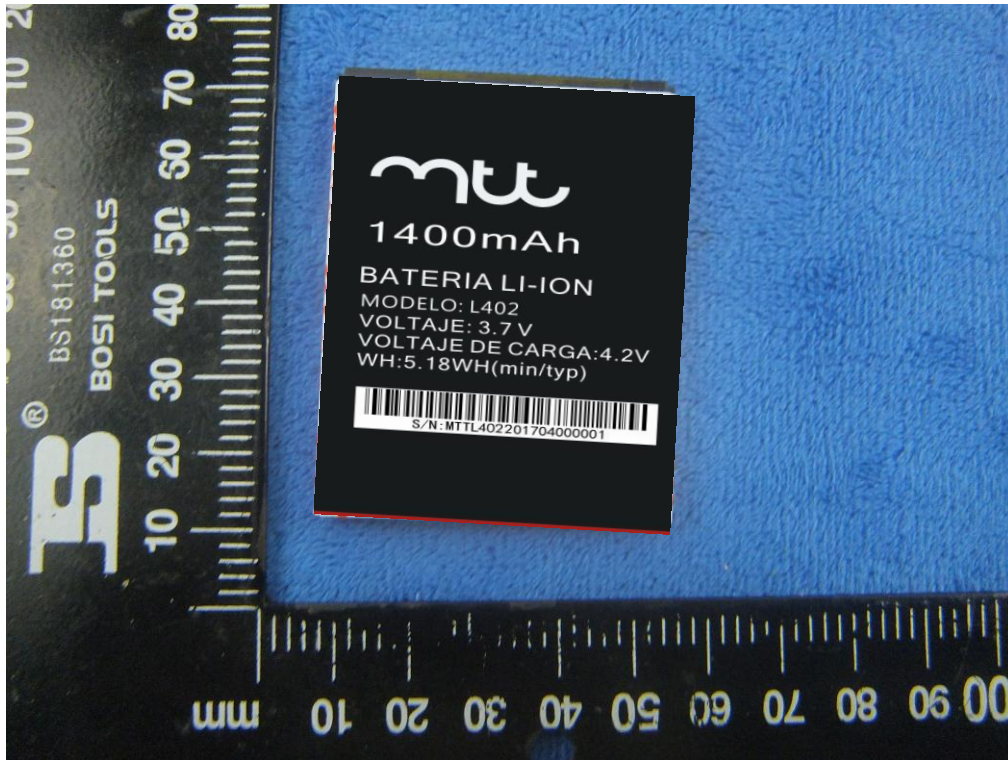
Cover Off - Top View 1



Cover Off - Top View 2



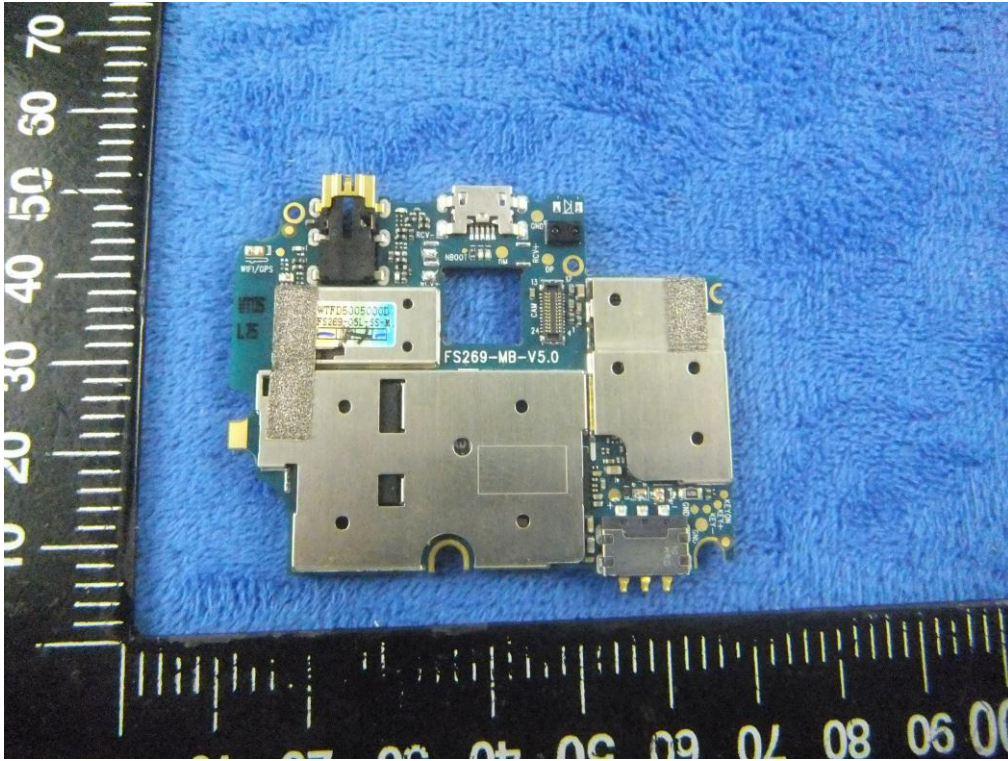
Battery - Front View



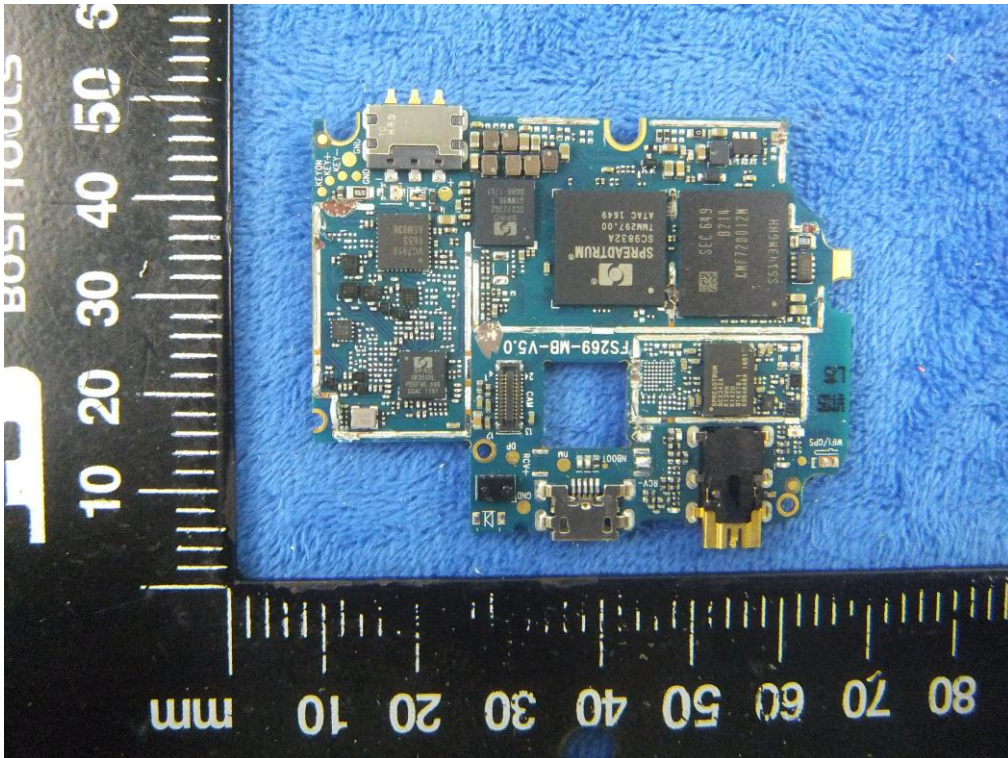
Battery - Rear View



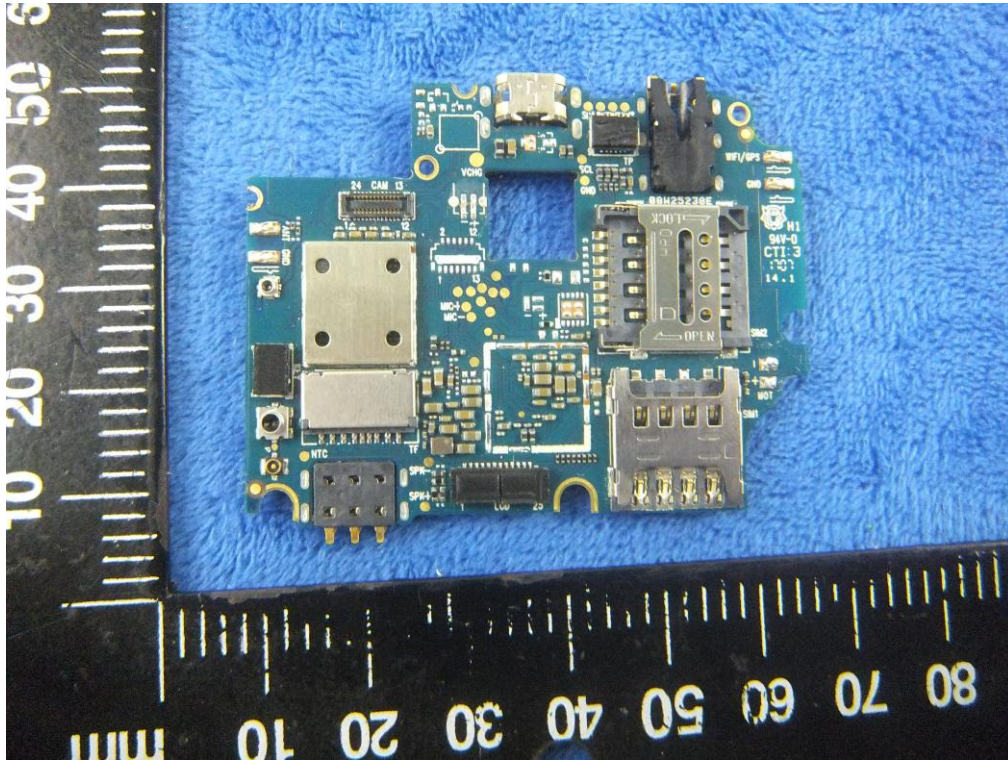
Mainboard with Shielding - Front View



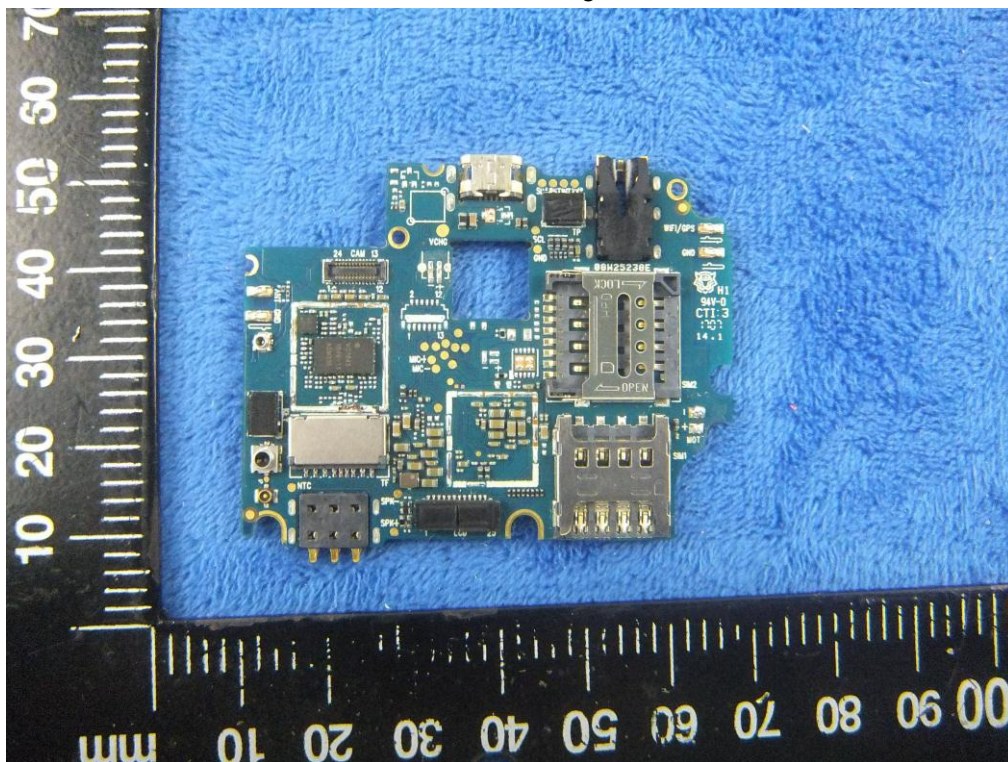
Mainboard without Shielding - Front View



Mainboard with Shielding – Rear View



Mainboard without Shielding – Rear View



LCD – Front View



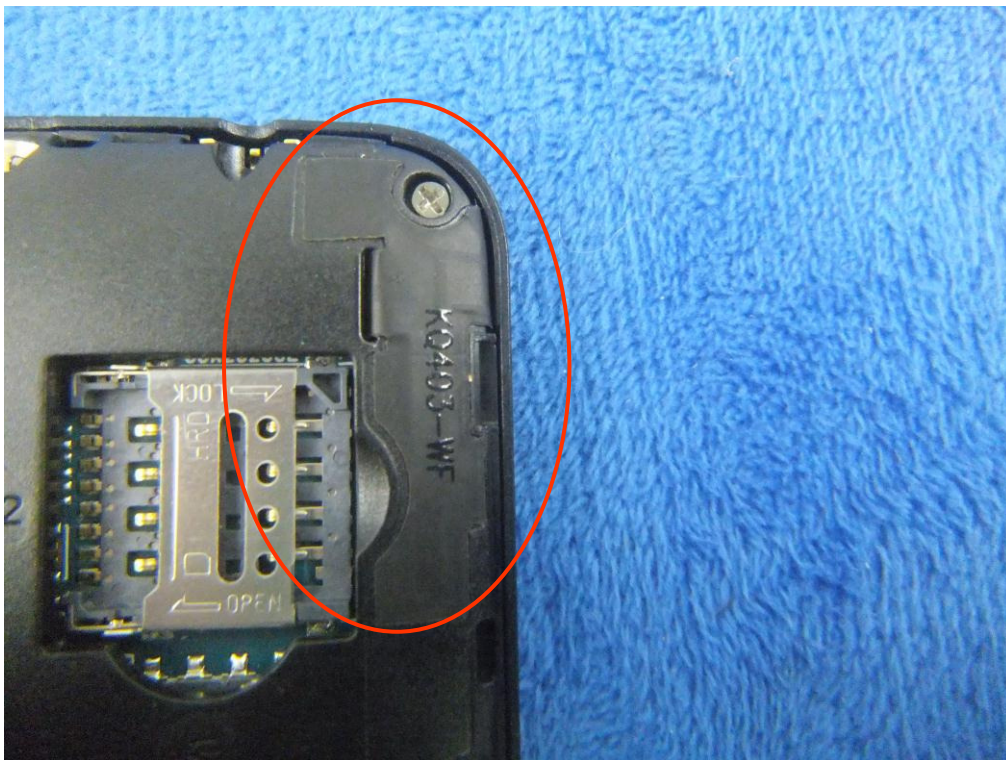
LCD – Rear View



GSM/PCS/UMTS-FDD Antenna View



WIFI/BT/BLE - Antenna View



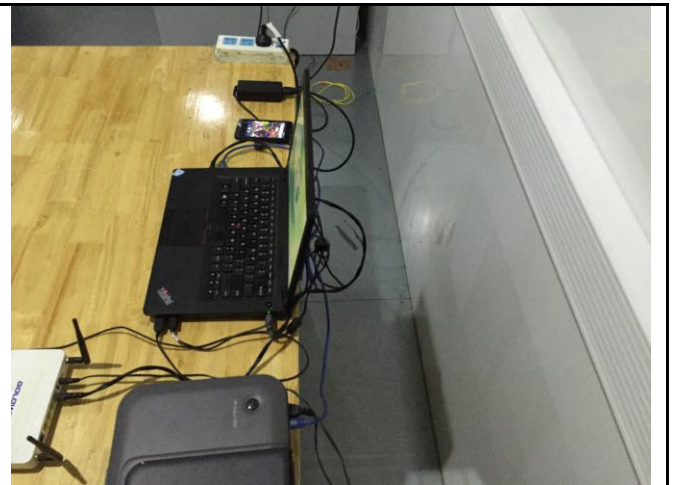
LTE - Antenna View



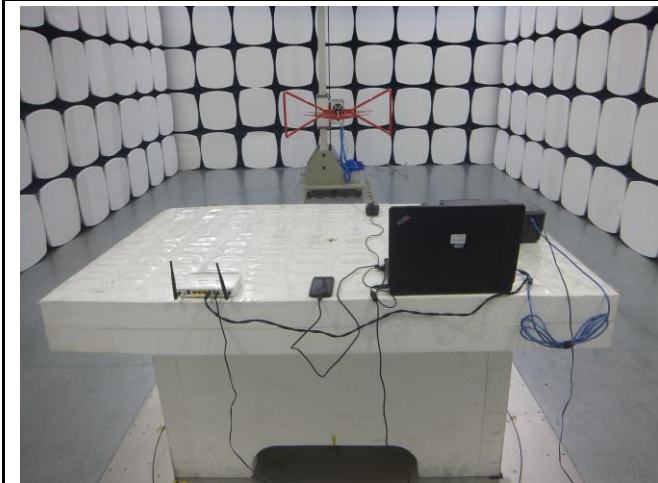
Annex B.iii. Photograph: Test Setup Photo



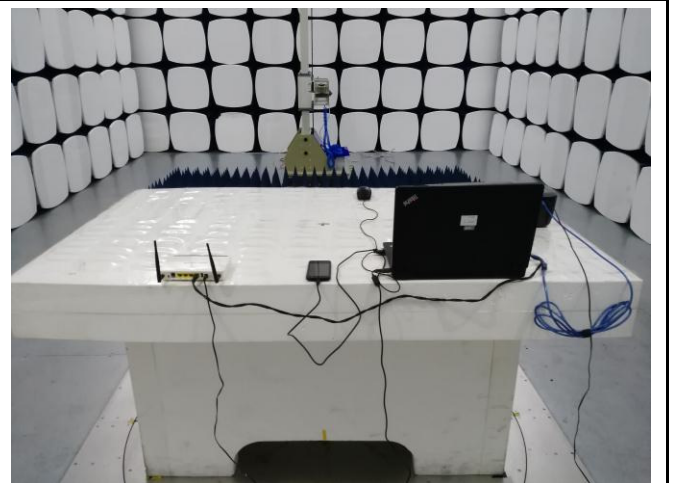
Conducted Emissions Test Setup – Front View



Conducted Emissions Test Setup – Side View



Conducted Emissions Test Setup – Front View

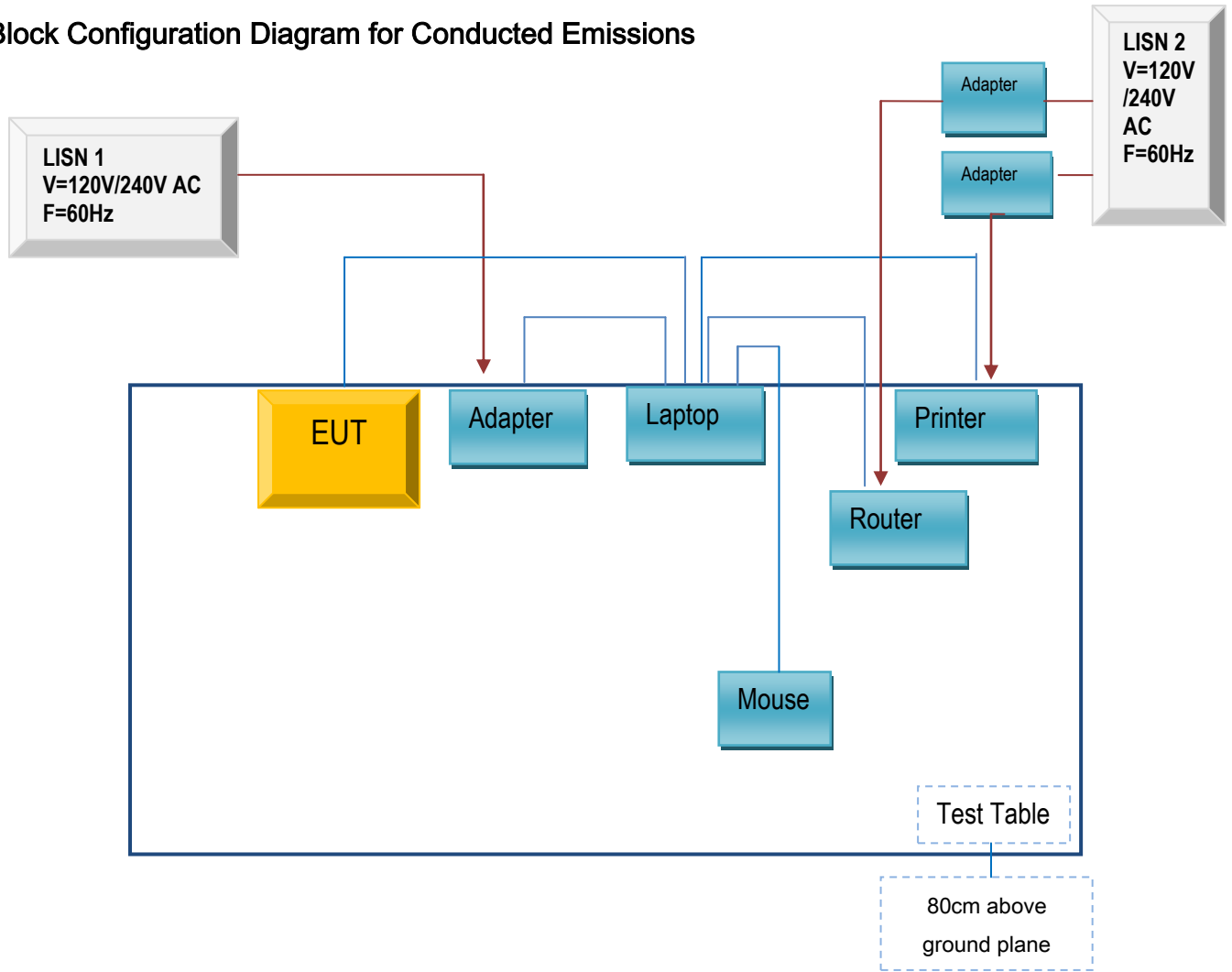


Conducted Emissions Test Setup – Side View

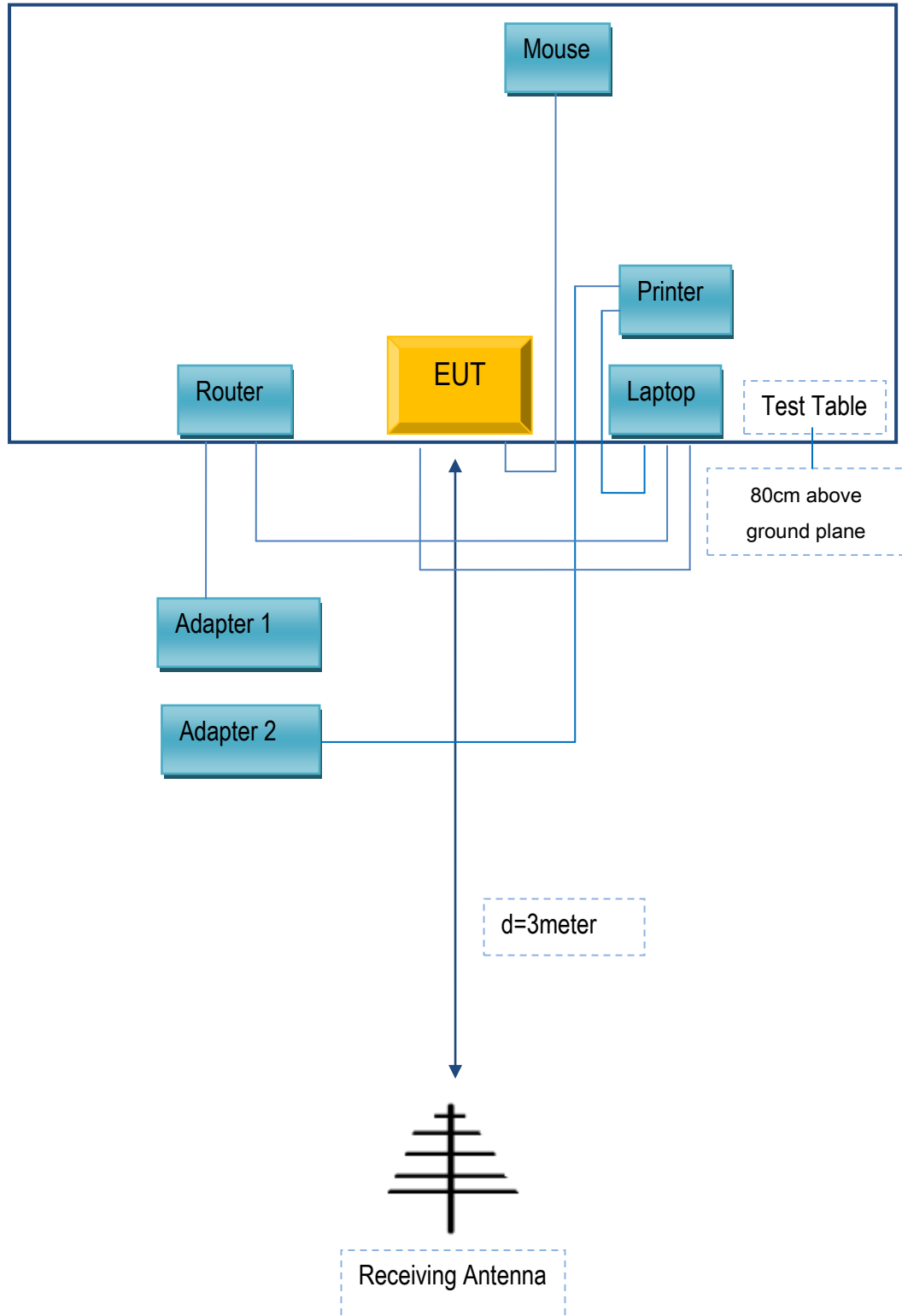
Annex C. TEST SETUP AND SUPPORTING EQUIPMENT

Annex C.ii. TEST SET UP BLOCK

Block Configuration Diagram for Conducted Emissions



Block Configuration Diagram for Radiated Emissions



Annex C. ii. SUPPORTING EQUIPMENT DESCRIPTION

The following is a description of supporting equipment and details of cables used with the EUT.

Supporting Equipment:

Manufacturer	Equipment Description	Model	Serial No
Lenovo	Laptop	E40	LR-1EHRX
GOLDWEB	Router	R102	1202032094
Lenovo	AC Adapter	42T4416	21D9JU
HP	Printer	VCVRA-1003	CN36M19JWX
DELL	Mouse	E100	912NMTUT41481
BULL	Socket	GN-403	GN201203

Supporting Cable:

Cable type	Shield Type	Ferrite Core	Length	Serial No
USB Cable	Un-shielding	No	2m	JX120051274
USB Cable	Un-shielding	No	2m	CBA3000AH0C1
RJ45 Cable	Un-shielding	No	2m	KX156327541
Router Power cable	Un-shielding	No	2m	13274630Z
Printer Power cable	Un-shielding	No	2m	127581031
Power Cable	Un-shielding	No	0.8m	GT211032

Test Report	17070294-FCC-E
Page	36 of 37

Annex D. User Manual / Block Diagram / Schematics / Partlist

Please see the attachment

Test Report	17070294-FCC-E
Page	37 of 37

Annex E. DECLARATION OF SIMILARITY

N/A