

## Differences Description

We IDEAL INDUSTRIES LIGHTING LLC, DBA CREE LIGHTING state:

**Original Product:** Wall switch

**Model Name:** CWD-CWC-WH, CWS-CWC-WH

**New Product:** Wireless Wall Controls

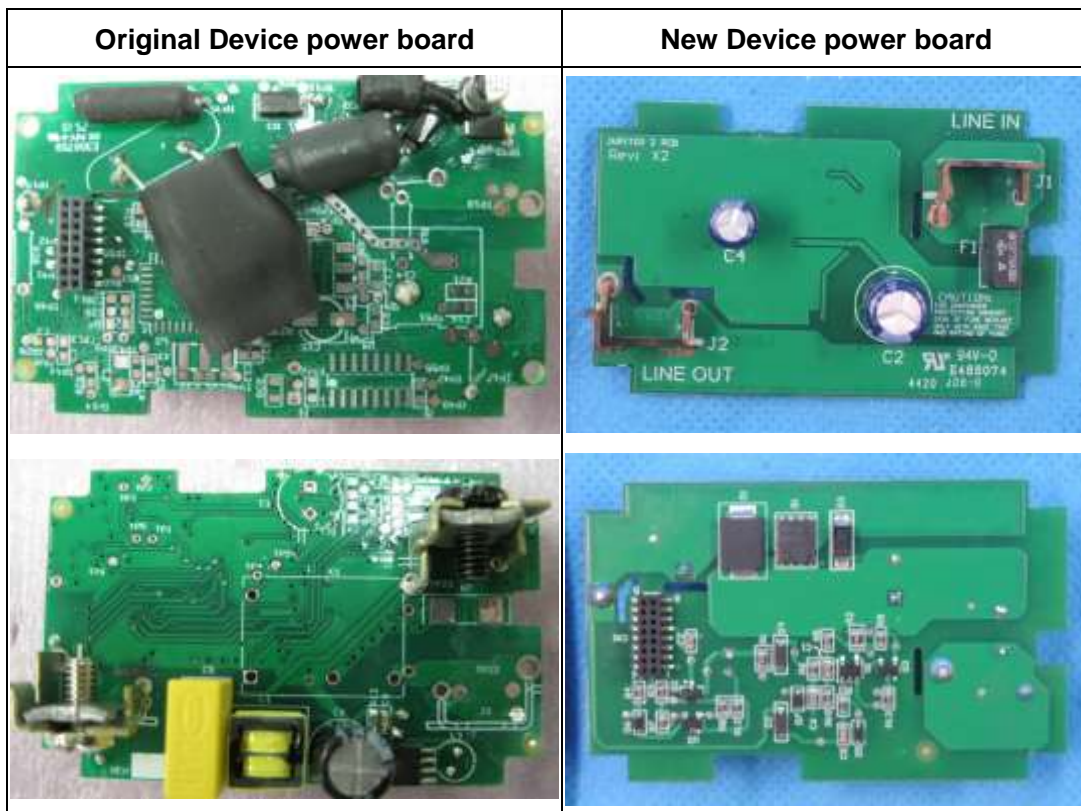
**Model Name:** CSC-CCD-UNV-WH, CSC-CWD-UNV-WH,  
CSC-CWS-UNV-WH

**Note:** Only Change the power board and product name and model name

**Brand Name:** **CREE**  **LIGHTING**

**FCC ID:** 2ACQ6-CWC

**IC:** 11481A-CWC



Sincerely,

Company: IDEAL INDUSTRIES LIGHTING LLC, DBA CREE LIGHTING

Title: Compliance Engineering Manager

E-mail: [ssyal@creelighting.com](mailto:ssyal@creelighting.com)

Name: Samir Syal

Signature

A handwritten signature in black ink, appearing to read 'S. Syal', is positioned below the text. The signature is written in a cursive, flowing style.