

# Getting Started

## Table of contents

### Precautions

#### About

- To install a Micro SIM card
- Removing a Micro SIM card
- Installing a Memory Card
- Removing a Memory Card
- Turning On / Off functionality

#### Basic Features

- Set up your device
- Organize your Home Screen
- Home Features
- Quick Settings
- Dual SIM features
- Messaging
- Phone
- Gmail

#### Accessibility

# Accessibility

To use the accessibility options, open **Settings > System > Accessibility**.

- **Speak Passwords** uses spoken feedback to describe events, such as notifications, and the results of your actions, such as opening an app.

- **Text to speech output:**  
**Settings > Accessibility > Text-to-speech output.**

Listen to an example: Select this option to hear a short demonstration of speech synthesis.

- **Touch and hold delay.** This setting allows you to adjust the amount of time required for your device to notice that you're touching an object on the screen. Users with limited dexterity might prefer to use a longer touch and hold delay.

Go to **Settings > Accessibility > Touch and hold delay**.  
Select Short, Medium, or Long.



You can also try magnification gestures, which allow you to zoom in and out, as well as temporarily magnify what's under your finger.

To try this, go to **Settings > Accessibility > Magnification gestures**.

## Messaging

Messaging lets you send, promptly reply or reply at a later time to important messages from your contacts in any of your SIM cards installed on your device. You can also email your message threads or conversations to others to keep them in the loop.

### Sending or replying to messages

1. From the Home Screen, tap messaging icon. Then tap .
2. In the "To" field, enter the number or tap  to select a contact from your list.
3. Start composing your message in the Type message field.
4. When you're done, select the SIM account where you're going to send your message from.

## Phone





Phone

You can place calls from the Phone app, the People app, or other apps or widgets that display contact information. Wherever you see a phone number, you can usually touch it to dial

To place a call to one of your contacts:

1. Touch the Phone icon on a Home or All Apps screen.
2. To choose someone to call, scroll or search. If the keypad's in the way, touch the Back button to lower it.
3. To place a call, touch the contact's name.

To view recent calls, touch the  call log icon at the bottom of the screen. To use the keypad, touch  keypad icon.



## Gmail



Gmail

Use the Gmail app to read and write email from any mobile device. To open it, touch the Gmail icon on a Home or All Apps screen.

To change your settings, add an account, or get help, touch the menu icon or button.

**TIP:** If you're using Microsoft Exchange, you need to set up the  Email app, which is available in  All Apps.

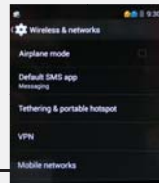
### Dual SIM Features

This feature allows you to manage the settings of the installed Micro SIM cards. With this feature, you can enable/disable the Micro SIM cards, assign SIM names or set one as preferred network.

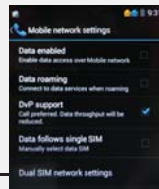
1 Tap More



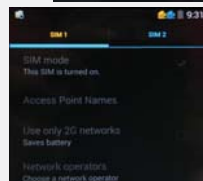
2 Tap Mobile Network



3 Tap Dual SIM network setting

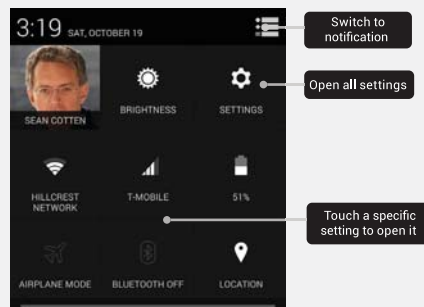


Both SIM 1 and SIM 2 will appear



## Quick Settings

Use Quick Settings to easily access Wi-Fi settings, manage display brightness, open the main Settings menu and more. To open Quick Settings, swipe down from the top of the screen with two fingers.




If you have a signal but no Internet connection, the bars indicating the strength of the Wi-Fi or mobile signal turn orange.

You can also set Auto Rotate from Quick Settings to lock or unlock automatic screen rotation.

## Lock Screen

If a lock is set for your screen, the screen goes dark and locks when the display goes to sleep or if you press the Power button.

You can set locks of different strengths using Lock settings:

1. Go to  Settings > Personal > Security > Screen lock
2. Touch the type of lock you'd like to use.

## Home Features

### Home screen

Receive all the reminders for any important events, apps and system updates and text messages from people close to you, right from your Home screen.




Swipe the Home Screen to the left or right to display the extended Home Screen.

### Organize your Home screen

To change the wallpaper for your Home screens, touch & hold the background.

To add an app icon to a Home screen :

1. Go to the Home screen where you want to place the app.
2. Touch the  All Apps icon.
3. Swipe from right to left, if necessary, to find the app you want.
4. Touch & hold the app until the Home screen appears, slide it into place, and lift your finger.

To add a widget to the Home screen

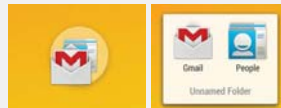
1. Touch & hold the background of any home screen
2. Touch widgets.
3. Touch & hold the app until the Home screen appears, slide it into place, and lift your finger.

To move an app or widget to another position :

1. Touch & hold the icon.
  2. Slide your finger to the new position.
- To move between Home screens, slide toward the edge of the screen.  
To bump another icon out of the way, slide slowly into it.
3. Lift your finger.

To create a folder, slide one icon quickly over another.

To name or rename a folder, open it and touch its name.



# Basic Features

## Set up your device

When you first turn on, you'll see a Welcome screen. Choose the language you want and touch Start or the ▶ Start icon

**IMPORTANT :** To complete the setup process, you must have a Wi-Fi or mobile Internet connection.

When prompted, you can sign in with your Google Account or create one at that time. You can also choose to skip this step and create one later

When you sign in with a Google Account, all the email, contacts, Calendar events, and other data associated with that account are automatically synced with your device. If you have more than one Android device, they are all kept in sync

For example, if you change a friend's phone number on your phone, that change also appears on your tablet and on any computers where you're logged into your Google Account.

If you have multiple Google Accounts, you can add others later from **Settings > Accounts > Add account**

## Android Capacitive Button

At the bottom of every JOI™ Phone 5 screen, no matter what you're doing, you'll always find these three buttons :



**Back**  
Opens the previous screen you were working in, even if it was in a different app.



**Home**  
Opens the central Home screen. Once you back up to the Home screen, you can't go back any further.



**Recent apps**  
Opens a list of thumbnail images of apps you've worked with recently. To open an app, touch it. To remove a thumbnail from the list, swipe it left or right.



#### Turning on/off functionality

##### Turning your device on

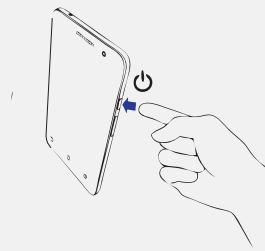
Press and hold the power button until your device starts up.

##### Turning your device off

1. If your screen is turned off, press the power button to turn it on. If your screen is locked, unlock the device screen.
2. Press and hold the power button, then when prompted, tap Power off then tap OK.

##### Sleep mode

To put your device in sleep mode, press the power button once until the screen turns off.



### Removing memory card

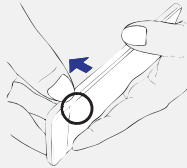
**CAUTION!**

- Be extremely careful when handling a memory card.
  - Eject the memory card properly to safely remove it from device.
- To eject the memory card, go to  
Home > All Apps > Settings > Storage > Unmount external storage

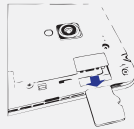
To remove a memory card:

1. Turn off your device
2. Pry the cover loose from the cover gap on the bottom-right corner, and then pull the rear cover off.

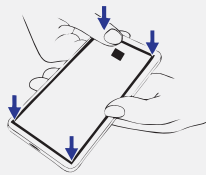
**CAUTION!** Be careful when you pry open the cover.



3. Pull out the memory card gently.



4. Put the rear cover back in place. Press down the rear cover on all slides to secure in place.



### Installing a memory card

This device supports a Micro SD memory card up to 32 GB capacity.

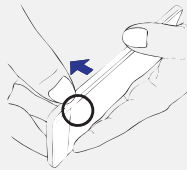
**NOTE:** Some memory cards may be incompatible with this device. Ensure that you use only compatible memory cards to prevent data loss, damage to either your device or memory card.

**CAUTION!** Be extremely careful when handling a memory card. Avoid inserting a Micro SIM card into the memory card slot!

To install a memory card:

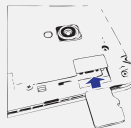
1. Turn off your device
2. Pry the cover loose from the cover gap on the bottom-right corner, and then pull the rear cover off.

**CAUTION!** Be careful when you pry open the cover.

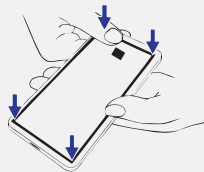


3. Align and insert a memory card into the memory card slot.

4. Push memory card all the way into the slot until it is seated firmly in place.



5. Put the rear cover back in place. Press down the rear cover on all sides to secure in place.



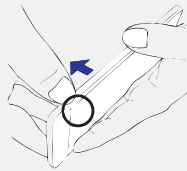
### Removing a Micro SIM card

**CAUTION:** Be extra careful when handling a Micro SIM card.

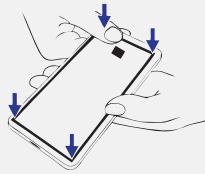
To install a Micro SIM card:

1. Turn off your device.
2. Pry the cover loose from the cover gap on the bottom-right corner, then pull the rear cover off.

**CAUTION!** Be careful when opening the cover.



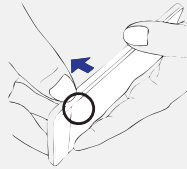
3. Gently pull the Micro SIM card out. Repeat the same step, if you wish to remove the other Micro SIM card.
4. Put the rear cover back in place. Press down the rear cover on all sides to secure in place.



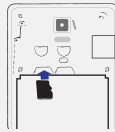
To install a Micro SIM card:

1. Turn off your device.
2. Pry the cover loose from the cover gap on the bottom-right corner, then pull the rear cover off.

**CAUTION!** Be careful when opening the cover.



3. Orient the Micro SIM card with its gold-plated contacts facing downward then insert it into the Micro SIM card 1 slot.
4. Push the Micro SIM card all the way into the slot until it is seated firmly in place.

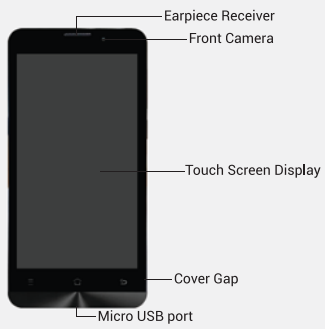


5. If you wish to install another Micro SIM card, orient the Micro SIM card with its gold-plated contacts facing downward then insert it into the Micro SIM card 2 slot.
6. Put the rear cover back in place. Press down the rear cover on all sides to secure in place.



**NOTE:** Once SIM card are installed, go to Settings > More > Mobile Networks > Dual SIM network Settings for more information and configuration of your SIM cards

# About



## Precautions

1. Prevent the device from falling to the ground or exposing it to strong impact in any form.
2. Prevent prolonged usage of this device in environments where the temperature is too cold, too warm (>35°C), or places with high humidity and dust level. Do not expose the device to strong sunlight for prolonged periods.
3. Avoid using the device in areas with strong magnetic and static field.
4. If the device comes into contact with water or any form of liquid, switch it off immediately. Only resume usage when the said water or liquid has dried off completely.
5. If cleaning is necessary, only use a dry and soft cloth or tissue paper.
6. Please back up important data from time to time to avoid data loss.
7. SNS Network shall not be held responsible for the loss of data on the device due to abnormal software and hardware operations, maintenance or any other accidents.
8. Please do not disassemble the device yourself. Doing so will cause the warranty to become void. Repairs should only be carried out by authorized parties.
9. Only use the battery that comes with the device. Using untested third-party batteries is a risk to your device and also your personal safety.

WARNING: This device complies with Part 15 of the FCC Rules. Operation is subject to the following two conditions: (1) this device may not cause harmful interference, and (2) this device must accept any interference received, including interference that may cause undesired operation.

**changes or modifications not expressly approved by the party responsible for compliance could void the user's authority to operate the equipment.**

**NOTE: This equipment has been tested and found to comply with the limits for a Class B digital device, pursuant to Part 15 of the FCC Rules. These limits are designed to provide reasonable protection against harmful interference in a residential installation. This equipment generates, uses and can radiate radio frequency energy and, if not installed and used in accordance with the instructions, may cause harmful interference to radio communications. However, there is no guarantee that interference will not occur in a particular installation. If this equipment does cause harmful interference to radio or television reception, which can be determined by turning the equipment off and on, the user is encouraged to try to correct the interference by one or more of the following measures:**

- Reorient or relocate the receiving antenna.
- Increase the separation between the equipment and receiver.
- Connect the equipment into an outlet on a circuit different from that to which the receiver is connected.
- Consult the dealer or an experienced radio/TV technician for help.

### Body-worn Operation

This device was tested for typical body-worn operations. To comply with RF exposure requirements, a minimum separation distance of 1.5cm must be maintained between the user's body and the handset, including the antenna. Third-party belt-clips, holsters, and similar accessories used by this device should not contain any metallic components. Body-worn accessories that do not meet these requirements may not comply with RF exposure requirements and should be avoided. Use only the supplied or an approved antenna.

This Smartphone meets the government's requirements for exposure to radio Waves. The guidelines are based on standards that were developed by independent Scientific organizations through periodic and thorough evaluation of scientific studies. The standards include a substantial safety margin designed to assure the safety of all Persons regardless of age or health.

FCC RF Exposure Information and Statement The SAR limit of USA(FCC) is 1.6W/kg Averaged over one gram of tissue. Device types: Smartphone (FCC ID:2ACPR-W5302) Has also been tested against this SAR limit. The highest SAR value reported under this Standard during product certification for use at the ear is 0.501W/kg and when properly Worn on the body is 0.555W/kg. the maximum Simultaneous Transmission SAR value that is 0.707W/Kg.

This device was tested for typical body-worn operations With the back of the handset kept 1.0cm from the body. To maintain compliance with FCC RF Exposure requirements, use accessories that **maintain a 1.0cm** separation distance between The handset. The use of belt clips ,holsters and similar accessories should not contain metallic Components in its assembly .The use of accessories that do not satisfy these requirements may Not comply with FCC RF exposure requirements, and should be avoided.