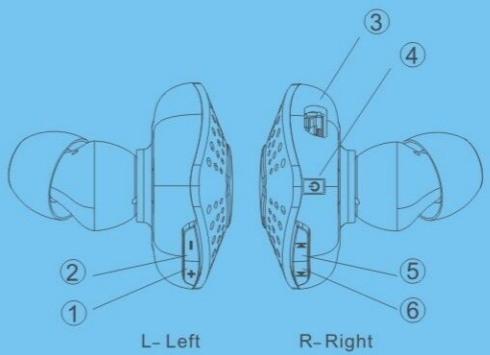




### How to wear

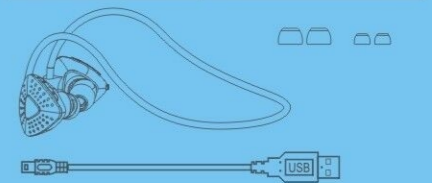


### Overview



### Package Content

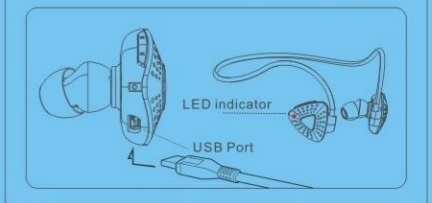
Items	Details
Nice 16 Bluetooth headset	1X
Micro USB Cable	1X
Regular ear tips	2X installed, 4X backup
User manual	1X



### How to charge

- Nice 16 is low battery when the LED indicator shows blinking red light, please charge it in time.
- For charging, please connect Nice 16 to reliable power source with Micro USB cable included in package; while charging, the LED indicator shows solid red light.
- The standard charging time is 2 hours. When charging completes, the LED indicator shows solid blue light.

**\*\*\*Notice\*\*\*** Please keep your USB port dry and clean; Please do not charge your device right after exercising in prevention of electricity leakage caused by remaining sweat.



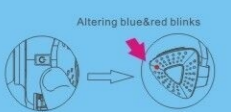
Bluetooth Earphone for Sports&Activity Life



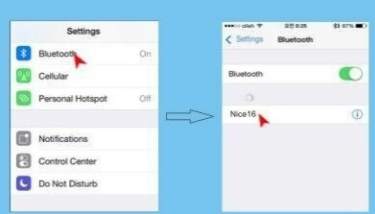
### Bluetooth Instruction

#### Pairing

- Enter pairing state
  - Under Power-off state, hold **⏻** firmly for 5 seconds. Pairing is successful when the LED indicator blinks altering red&blue light and voice prompt "Pairing" is heard.
  - Nice 16 would enter "Standby" mode if user releases **⏻** before the LED indicator starts blinking altering red&blue light. Please power off Nice 16 and try again.



- Enable Bluetooth function of desired device, then search for "Nice 16" and click it to pair.



#### LED Indicator

Color	Status	Indicate
Blue	Stay for 1 second	Power on
Red	Stay for 1 second	Power off
Red & Blue	Blinking	Pairing
Blue	Single blink every 2 seconds	Standby
Blue	Blink rapidly	Incoming call
Blue	Blink rapidly	Dial
Blue	Double blinks every 2 seconds	Phone call
Blue	Double blinks every 2 seconds	Music Play
Red	Solid	Charging
Blue	Solid	Charge complete
Red	Single blink every 20 seconds; Audio	Low battery

#### Action

Function	Action	Signal/Prompt
Power-on	Hold <b>⏻</b> for 2 seconds	Blue light stay for 1 second; Audio
Power-off	Hold <b>⏻</b> for 3 seconds	Red light stay for 1 second; Audio
Pairing	Under Off state, hold <b>⏻</b> for 5 seconds	Altering red&blue blinks; Audio
Connected		Single Blue blink every 3 seconds
Reconnect(manual)	Turn off Nice 16, hold <b>⏻</b> for 5 seconds	

#### Music Playing

Function	Action	Signal/Prompt
Play / Pause	Press the <b>⏻</b> button	Audio
Previous / Next	Hold <b>⏪</b> / <b>⏩</b> for 2 seconds	Audio
Volume up/down	Press the <b>+</b> / <b>-</b> button	Volume(max/min)

**\*\*\*Notice\*\*\*** "Play/Pause, Previous/Next" function may be disabled due to the different setting of target cellphones or other Bluetooth devices. Please operate the headset under the instruction of target device.

#### Action

Function	Action	Signal/Prompt
Phone call Function		
Answer / End	Press <b>⏻</b>	Audio
Reject	Hold <b>⏻</b> for 2 seconds	Audio
Redial	Quickly double press <b>⏻</b>	Audio
Earphone/Phone Switch	During phone call, hold for 2 seconds	Audio
Volume up/down	Press the <b>+</b> / <b>-</b> button	Volume(Max/Min)

#### Specs

Bluetooth phone call/music playing	Around 7 hours
Standby time	Around 180 hours
Charging time	Around 2 hours
Speaker	speaker diameter:Ø9mm sensitivity: 98+3dB impedance: 32Ω frequency response: 50Hz-15KHz
Microphone	microphone size: Ø4*1.5mm sensitivity: -45±3dB Impedance≤22kΩ frequency response: 30-16000 Hz
Bluetooth version: CSR 4.1	Frequency range: 2402MHz-2480MHz Transmit power Trabsmission distance: 10m/33ft Pairing name: Nice 16

#### Trouble shooting

Problem	Possible Cause	Solution
Can't turn on	Not enough battery	Charge
Can't detect device	Out of effective range	Bring device closer and reconnect
No sound during music playing	Bluetooth connection failed or not in Bluetooth phone call mode	Reconnect or switch to Bluetooth phone call mode
No sound during phone call		

#### What's Unique

- MULTI-CONNECTION**
- Successfully pair Nice 16 with first Bluetooth device, then turn off Nice 16 and Bluetooth function of the paired device.
  - Power on Nice 16, then pair it with second Bluetooth device.
  - Turn on Bluetooth function of first device, pair it with Nice 16 again.
  - Nice 16 is now multi-connected with both Bluetooth devices, and readily switchable.
- \*Notice\*** Bluetooth connection priority may exist due to the difference between devices

**FCC STATEMENT**  
This device complies with Part 15 of the FCC Rules. Operation is subject to the following two conditions:  
(1) This device may not cause harmful interference, and  
(2) This device must accept any interference received, including interference that may cause undesired operation.  
**Warning:** Changes or modifications not expressly approved by the party responsible for compliance could void the user's authority to operate the equipment.

**NOTE:** This equipment has been tested and found to comply with the limits for a Class B digital device, pursuant to Part 15 of the FCC Rules. These limits are designed to provide reasonable protection against harmful interference in a residential installation. This equipment generates uses and can radiate radio frequency energy and, if not installed and used in accordance with the instructions, may cause harmful interference to radio communications. However, there is no guarantee that interference will not occur in a particular installation. If this equipment does cause harmful interference to radio or television reception, which can be determined by turning the equipment off and on, the user is encouraged to try to correct the interference by one or more of the following measures:  
 ■ Reorient or relocate the receiving antenna.  
 ■ Increase the separation between the equipment and receiver.  
 ■ Connect the equipment into an outlet on a circuit different from that to which the receiver is connected.  
 ■ Consult the dealer or an experienced radio/TV technician for help.

**RF warning statement:**  
The device has been evaluated to meet general RF exposure requirement. The device can be used in portable exposure condition without restriction.

#### Storage and maintenance

- Storage:  
Store your product in cool and dry place.
- Maintenance:  
a. the recommended working temperature range is 0-45°C (32-113°F); Over hot/cold/humid environment may badly reduce product battery life and harm overall performance.  
b. avoid to use the product during lightning storm.  
c. after long abandonment, please charge your product before use.  
d. clean the product with a piece of dry cloth.  
e. if remaining water/sweat found inside USB port, simply dry it with soft cloth.  
f. keep the product away from sharp edges/points.

#### Quality Warranty

- The product has one-year free warranty from date of purchase.
- Any human factors or force majeure that cause the malfunction of the product will not be included in the free warranty.
- For any quality problems, please contact your local distributor and take the product to check, repair or replace in time if need.

#### Contact us