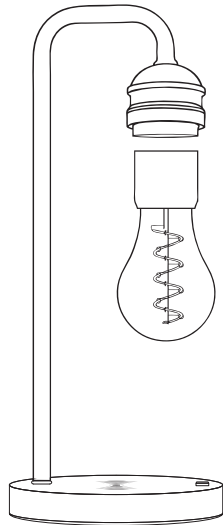


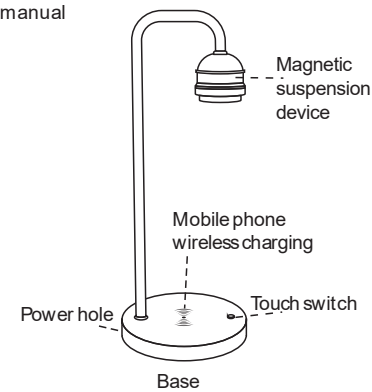
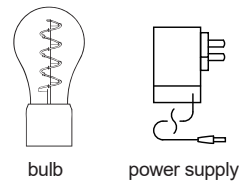
# Wireless Charging Magic Lamp



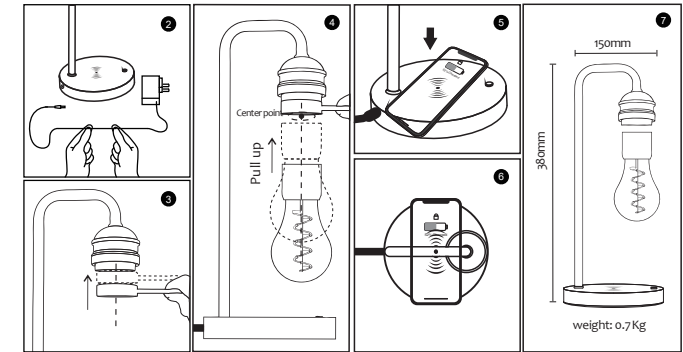
1. The core technology is this creative suspension bulb utilizing two driving forces automatic control systems.
2. When it is unplugged or loses power, the light bulb will attach itself to the suspension device to avoid the problem of a falling light bulb.
3. The multi-function magnetic suspension light can not only be used as a table or desk lamp but can also wireless charge mobile phones on its base.
4. Please read the instructions carefully. Then you can use the floating bulb very simply. Follow the safety guidelines contained, which will help avoid safety accidents.
5. To avoid damage, do not drop any part of this product (the lamp, base, and bracket).
6. The product should be used on a horizontal, flat surface; otherwise, the bulb may continually shake.
7. For safety reasons, this product is not suitable for children under 12 years of age.
8. If lamp is not being used for an extended period of time, please place bulb somewhere safe and do not directly attach to the suspension device.

## The product contains accessories: ●

Base light bulb Auxiliary tools  
power supply Instruction manual



## Use s tep diagram



## Operation guide

- Place the base on the water platform, connect the power adapter to the base jack, and plug in the power source;
- As shown in Figure 3-4, take the auxiliary tool and align it under the suspension device, then pick up the light bulb with one hand and lean against the auxiliary tool. When you feel the light bulb has a suspension force, slowly let go of your hand (be careful not to drop the light bulb), and then Pull out the auxiliary tool gently, and the bulb installation is completed.
- As shown in Figure 1, there is a light bulb touch switch on the base table.

## Wireless charging method

- 1) When using the mobile phone wireless charging, please make sure that the base is properly connected to the power supply. When placing the mobile phone, the charging device should be placed face down on the charging area of the base, that is, enter the charging state, complete the charging, and take it away.
- 2) Since each mobile phone has different wireless charging position conditions, if it is found that it cannot be charged, please try to place the mobile phone with different orientations (or remove the protective cover) until the recognition is successful.

## Note

- For the first time, you may need to try multiple times to be successful. Please be patient.
- The thermal sensor switch is built in the suspension system. In case of failure or improper operation, the heat of the product is too large, and the sensor will disconnect the floating circuit to ensure safety. After five minutes, if the surface temperature of the product drops, you can try to suspend again.
- If the handle is released during the operation of the lamp suspension, the hand may be released and the lamp may fall. Please take protective measures. The damage is not a quality warranty.
- Please use the manufacturer's dedicated power supply.
- Do not put the product in water or liquid to prevent the product from entering the water.
- Do not touch the power supply with wet hands.
- Do not use in direct sunlight or high temperatures.
- Do not place anything between the wireless charging dock and the phone being charged.
- If the light bulb is unstable when charging the phone, please take down the light bulb and place it next to it; after charging the phone, hover it.
- When the product is not in use, place the magnetic suspension bulb separately from the base.

## common problem

1. How is the light bulb suspended? "Utilizing the upward magnetic force and the gravity balance of the bulb itself."
2. How does the light bulb shine? " Utilizing radio energy conversion technology;"
3. What happens to the light bulb if the power is turned off? " At the moment of power failure, the force of the magnetic field is greater than the gravity of the bulb, so the bulb will suck up the suspension device and will not fall off;"
4. Why does the suspension device and the bulb heat up? " The equipment continues to work, it will produce a certain amount of heat, but it is safe and will not be hot."

You should read the following safety tips before using this product.  
Remove or remove metal objects from your hands before using this product.

- This product is only suitable for indoor use
- Do not place this product in a damp environment
- Place the suspension base on a horizontal table and remove items that interfere with the magnet;
- Do not use any power source other than this product configuration;
- If the product is exposed to water and other liquids during use, stop using it immediately and unplug it;
- When the product is in use, the wooden base will heat up, which is normal;
- Please do not bring other items that interfere with the magnet close to the product, such as iron, credit card, hard disk, pacemaker, etc.

## Product parameters

Product Name : Wireless Charging Magic Lamp

Power adapter: Input AC100~240V

Output DC12V2000mA

Charging type : One-to-one charging of the corresponding area

Main features : Wireless charging transmitter, magnetic levitation, wireless conduction

Wireless fast charging power : 5-10w

Rated power : 2~5w

Base diameter : 150mm

Light bulb size : 70x135mm

Charging distance : 4-6mm

Product Certification : FCC ID:2AC03-18818

Charging for use : All Qi-compliant wireless charging devices

## FCC compliance statement

This device complies with part 15& part 18 of the FCC Rules. Operation is subject to the following two conditions: (1) this device may not cause harmful interference, and (2) this device must accept any interference received, including interference that may cause undesired operation.  
changes or modifications to this unit not expressly approved by the party responsible for compliance could void the user's authority to operate the equipment.

This equipment has been tested and found to comply with the limits for a Class B digital device, pursuant to part 15& part 18 of the FCC Rules. These limits are designed to provide reasonable protection against harmful interference in a residential installation. This equipment generates, uses and can radiate radio frequency energy and, if not installed and used in accordance with the instructions, may cause harmful interference to radio communications. However, there is no guarantee that interference will not occur in a particular installation.  
If this equipment does cause harmful interference to radio or television reception, which can be determined by turning the equipment off and on, the user is encouraged to try to correct the interference by one or more of the following measures:  
-- Reorient or relocate the receiving antenna.  
-- Increase the separation between the equipment and receiver.  
-- Connect the equipment into an outlet on a circuit different from that to which the receiver is connected.  
-- Consult the dealer or an experienced radio/TV technician for help.

## FCC Radiation Exposure statement

This equipment complies with FCC radiation exposure limits set forth for an uncontrolled environment. This equipment should be installed and operated with minimum distance 20cm between the radiator and your body. This transmitter must not be co-located or operating in conjunction with any other antenna or transmitter.