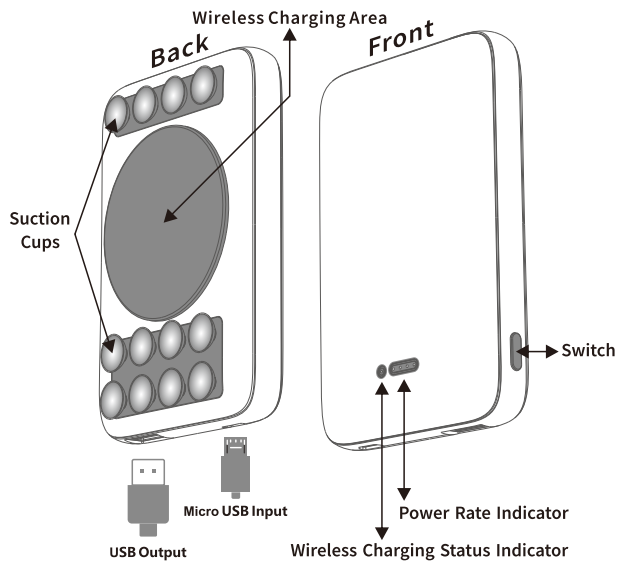


# User Manual

Model: 18800

## In the box:



**Note:**  
Thank you for your acquisition of this compact power bank wireless charger that is compatible with all Qi devices.  
For optimum performance and safety, please read this manual carefully before using this product.

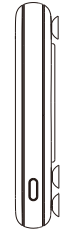
## Specifications:

Capacity: 5000mAh  
Input: 5V/2A  
Charging Efficiency: ≥75%  
Product size: 95 x 63x15 mm

USB Output: 5V/2A  
Wireless Output: 5V/1A (5W)  
Transmission Distance: ≤6mm

## How to Use

### Switch

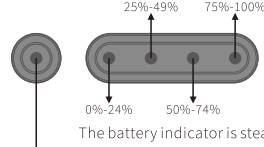


### Use of switches

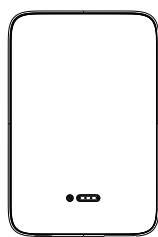
Press the switch once to turn on the product, the battery indicator will light up. Then it is in the standby state and other devices can be charged.  
With the power on, press the switch twice or press and hold for 5 seconds to turn off the power.

**Tips:** In standby state, if you do not perform other operations, it will automatically shut down after about 20 seconds. If you need to use it again, please press the switch again.

### Power Rate Indicator



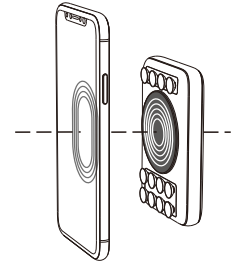
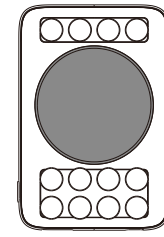
### Indicator



### Wireless Charging Status Indicator

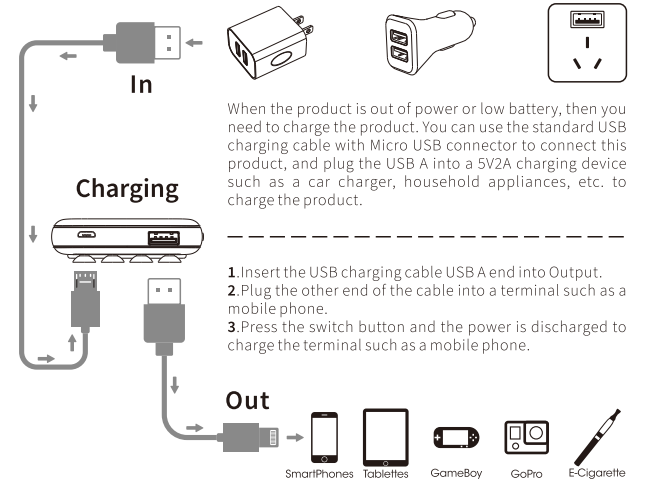
**Green** light on, wireless charging.  
**Red** light on, wireless charging is standby.  
**Red** light and the **green** light flashes alternately, wireless charging is abnormal.

## Wireless Charging



Please put the single-row suction cup and mobile phone's camera face up, as shown in the figure

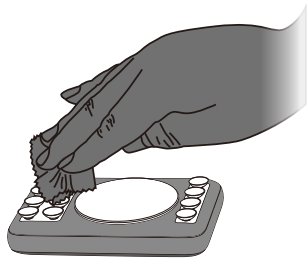
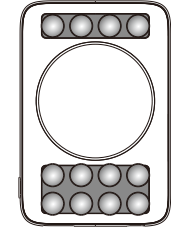
For wireless charging, to charge the device more efficiently, align the wireless charging area of the product with the wireless charging receiving area of the device. For most mainstream models, this product ensures that the camera is not blocked during use.



When the product is out of power or low battery, then you need to charge the product. You can use the standard USB charging cable with Micro USB connector to connect this product, and plug the USB A into a 5V2A charging device such as a car charger, household appliances, etc. to charge the product.

1. Insert the USB charging cable USB A end into Output.
2. Plug the other end of the cable into a terminal such as a mobile phone.
3. Press the switch button and the power is discharged to charge the terminal such as a mobile phone.

## Suction



When the suction cups are dirty, use a damp cloth to gently clean and allow to dry before use.

## Warning

### When your wireless power bank works improperly

1. Make sure the wireless power bank is clean and unobstructed.
2. When the wireless power bank is over-heating, remove your mobile device away and the power bank will stop charging automatically when over-heating. Please try charging again when the wireless power bank cools down.

### Remarks

It is normal that this charge and mobile device will be hot under operating conditions and it may be hotter when charging and using the mobile device at the same time (such as playing music).



Made in China

## FCC compliance statement

This device complies with Part 15 of the FCC Rules. Operation is subject to the following two conditions: (1) this device may not cause harmful interference, and (2) this device must accept any interference received, including interference that may cause undesired operation.

changes or modifications not expressly approved by the party responsible for compliance could void the user's authority to operate the equipment.

This equipment has been tested and found to comply with the limits for a Class B digital device, pursuant to Part 15 of the FCC Rules. These limits are designed to provide reasonable protection against harmful interference in a residential installation. This equipment generates, uses and can radiate radio frequency energy and, if not installed and used in accordance with the instructions, may cause harmful interference to radio communications. However, there is no guarantee that interference will not occur in a particular installation.

If this equipment does cause harmful interference to radio or television reception, which can be determined by turning the equipment off and on, the user is encouraged to try to correct the interference by one or more of the following measures:

- Reorient or relocate the receiving antenna.
- Increase the separation between the equipment and receiver.
- Connect the equipment into an outlet on a circuit different from that to which the receiver is connected.
- Consult the dealer or an experienced radio/TV technician for help.

This equipment complies with FCC radiation exposure limits set forth for an uncontrolled environment. This equipment should be installed and operated with minimum distance 20 cm between the radiator and your body.

品名:	Lucky Group-Box-5000W-说明书	规格:	128g 双铜 黑白 双面印刷 风琴折 尺寸: 90x140 mm
版本:	20210520		
制作:	李志敏		
料号:			