



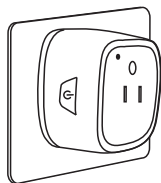
Download App

Scan the QR code or search ETMars in Apple store and Google play store



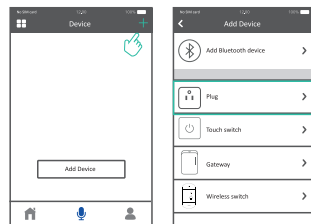
Network Configuration

- 1 Connect the phone with WiFi(Not support 5G WiFi),and then connect the plug with power



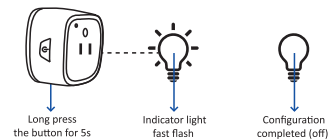
Network Configuration

- 2 Open ETMars App,click the add device icon, then choose the plug you need configure, follow the instruction



Network Configuration

- 3 Long press the device power button for 5 second,the LED flash fast,then go to configuration mode,when configure success the LED will turn off



Federal Communications Commission (FCC) Statement

This device complies with part 15 of the FCC Rules. Operation is subject to the following two conditions: (1) This device may not cause harmful interference, and (2) this device must accept any interference received, including interference that may cause undesired operation.

Note: This equipment has been tested and found to comply with the limits for a Class B digital device, pursuant to part 15 of the FCC Rules. These limits are designed to provide reasonable protection against harmful interference in a residential installation. This equipment generates, uses and can radiate radio frequency energy and, if not installed and used in accordance with the instructions, may cause harmful interference to radio communications. However, there is no guarantee that interference will not occur in a particular installation. If this equipment does cause harmful interference to radio or television reception, which can be determined by turning the equipment off and on, the user is encouraged to try to correct the interference by one or more of the following measures:

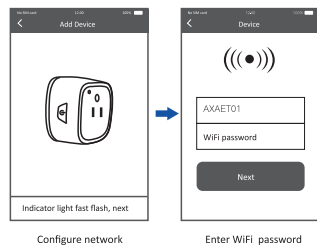
- Reorient or relocate the receiving antenna.
- Increase the separation between the equipment and receiver.
- Connect the equipment into an outlet on a circuit different from that to which the receiver is connected.
- Consult the dealer or an experienced radio/TV technician for help.

Warning: Changes or modifications made to this device not expressly approved by Shenzhen Aoxingao Technology Co.,Ltd may void the FCC authorization to operate this device.

Note: The manufacturer is not responsible for any radio or TV interference caused by unauthorized modifications to this equipment. Such modifications could void the user's authority to operate the equipment.
The distance between user and products should be no less than 20cm.

Network Configuration

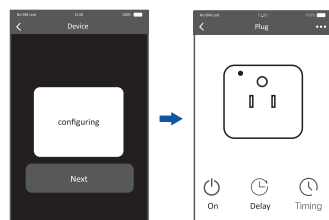
Configure step



Configure network

Enter WIFI password

Network Configuration



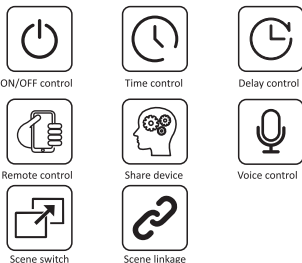
Network

Configure network completed

If configuration fails, please restart or replace other WiFi to reconfiguration

Function

ETMars support many kinds of device management, enjoy your smart life



Product parameters

Model number: WS086-D
Material: Waterproof PC
Operating voltage: AC100V-240V 50/60Hz
Maximum power: ≤2000W
Working temperature: -20℃ ~ 60℃
Working Distance: 50m(in open area)
Wireless standard: WiFi 2.4Ghz 802.11 b/g/n
Support Amazon Alexa,Google home and TmallGenie,detail configuration instructions can be viewed in ETMars APP "My - third party access".



Safety Precaution

- The load does not exceed the rated power, the maximum current does not exceed 10A
- Only support Android4.4, IOS9.0 and above version cellphone
- Please fully inserted when use the plug to ensure the stability of electrical work and prevent electric shock
- Products should be placed in out of children's reach place, do not touch the plug by wet hands, do not use in humid or near heat sources environment

Safety Precaution

- Please unplug the electrical plug before repairing the electrical equipment connected with the equipment, and Live work is prohibited
- When the home power outage,timing group maybe out of the situation,need to reconnect the device with the cellphone to calibration time automatically