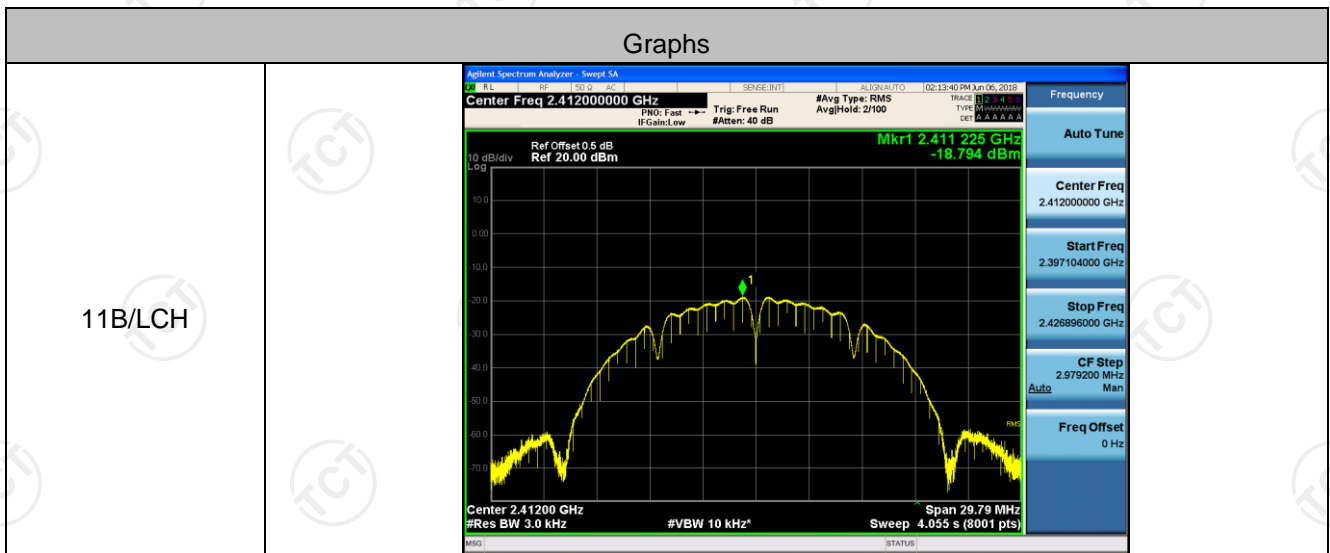


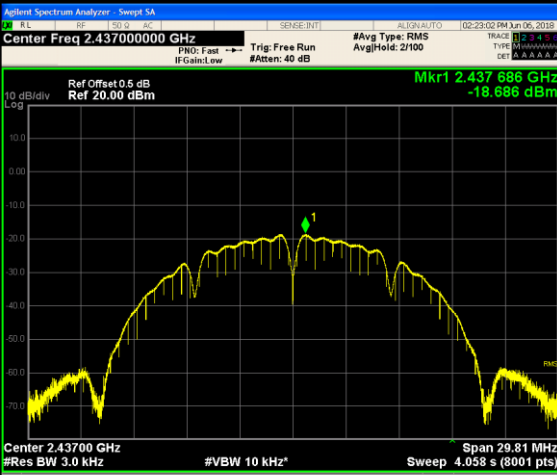
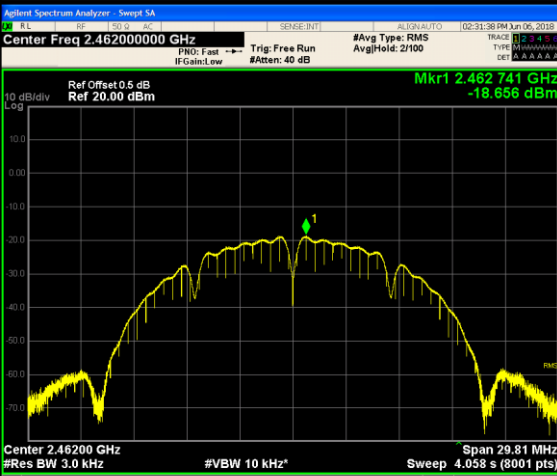
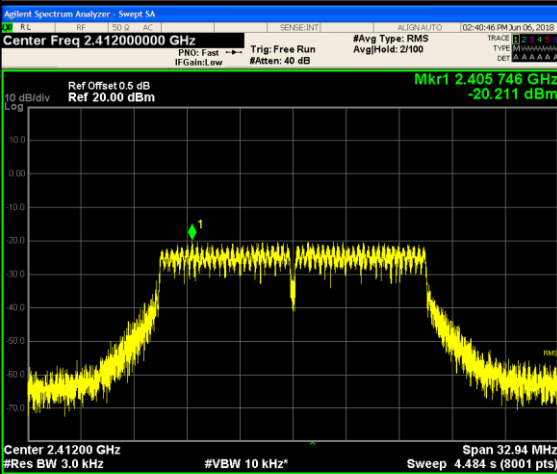
Power Spectral Density

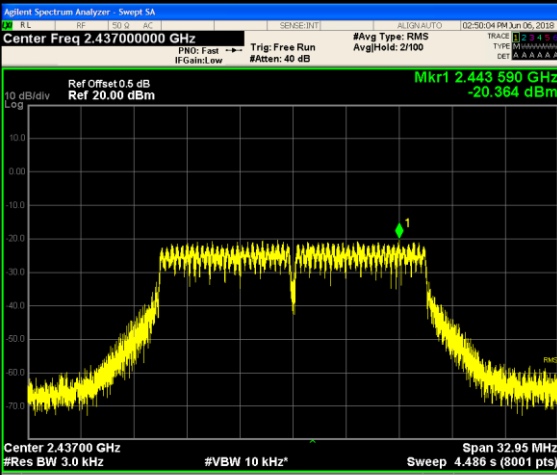
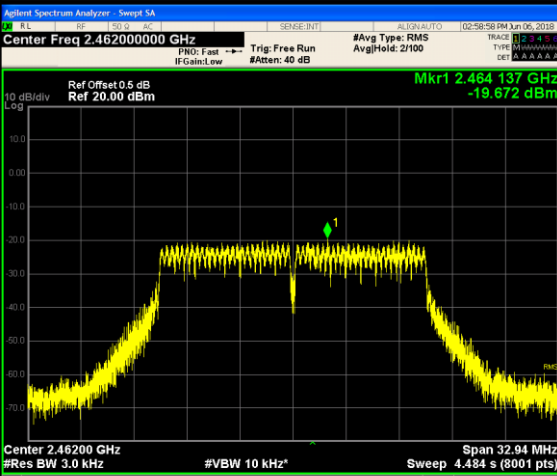
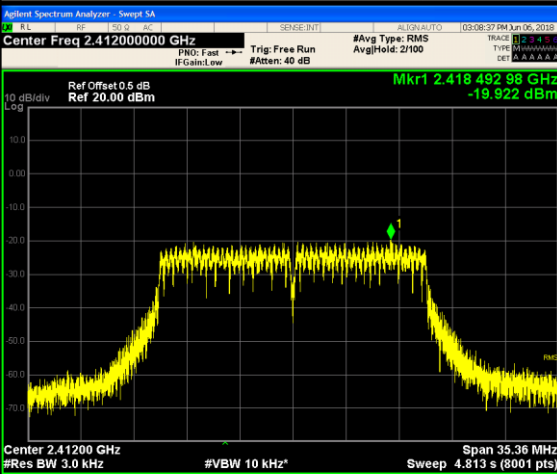
Result Table

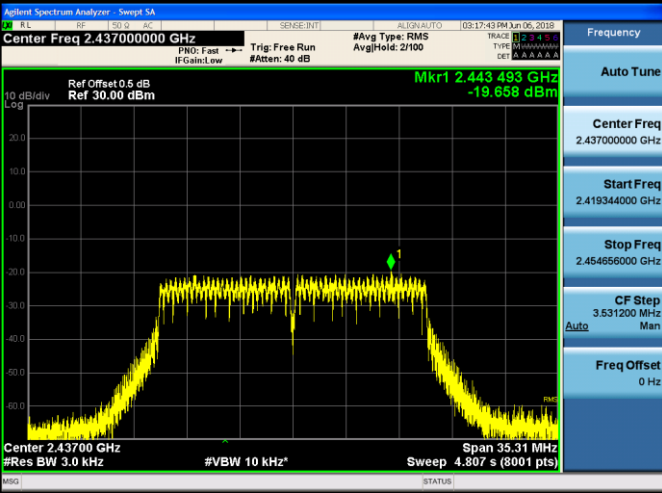
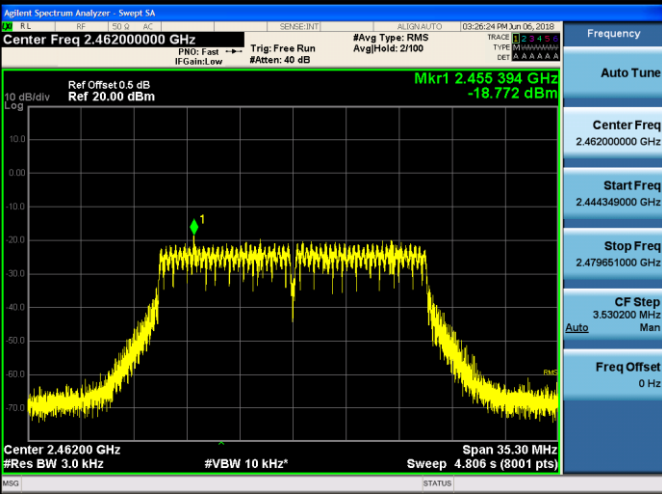
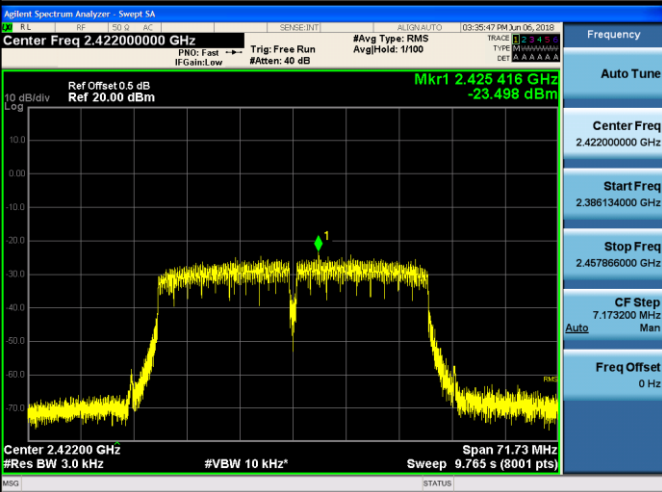
Mode	Channel	Meas.Level [dBm]	Verdict
11B	LCH	-18.794	PASS
11B	MCH	-18.686	PASS
11B	HCH	-18.656	PASS
11G	LCH	-20.211	PASS
11G	MCH	-20.364	PASS
11G	HCH	-19.672	PASS
11N20SISO	LCH	-19.922	PASS
11N20SISO	MCH	-19.658	PASS
11N20SISO	HCH	-18.772	PASS
11N40SISO	LCH	-23.498	PASS
11N40SISO	MCH	-24.680	PASS
11N40SISO	HCH	-24.226	PASS

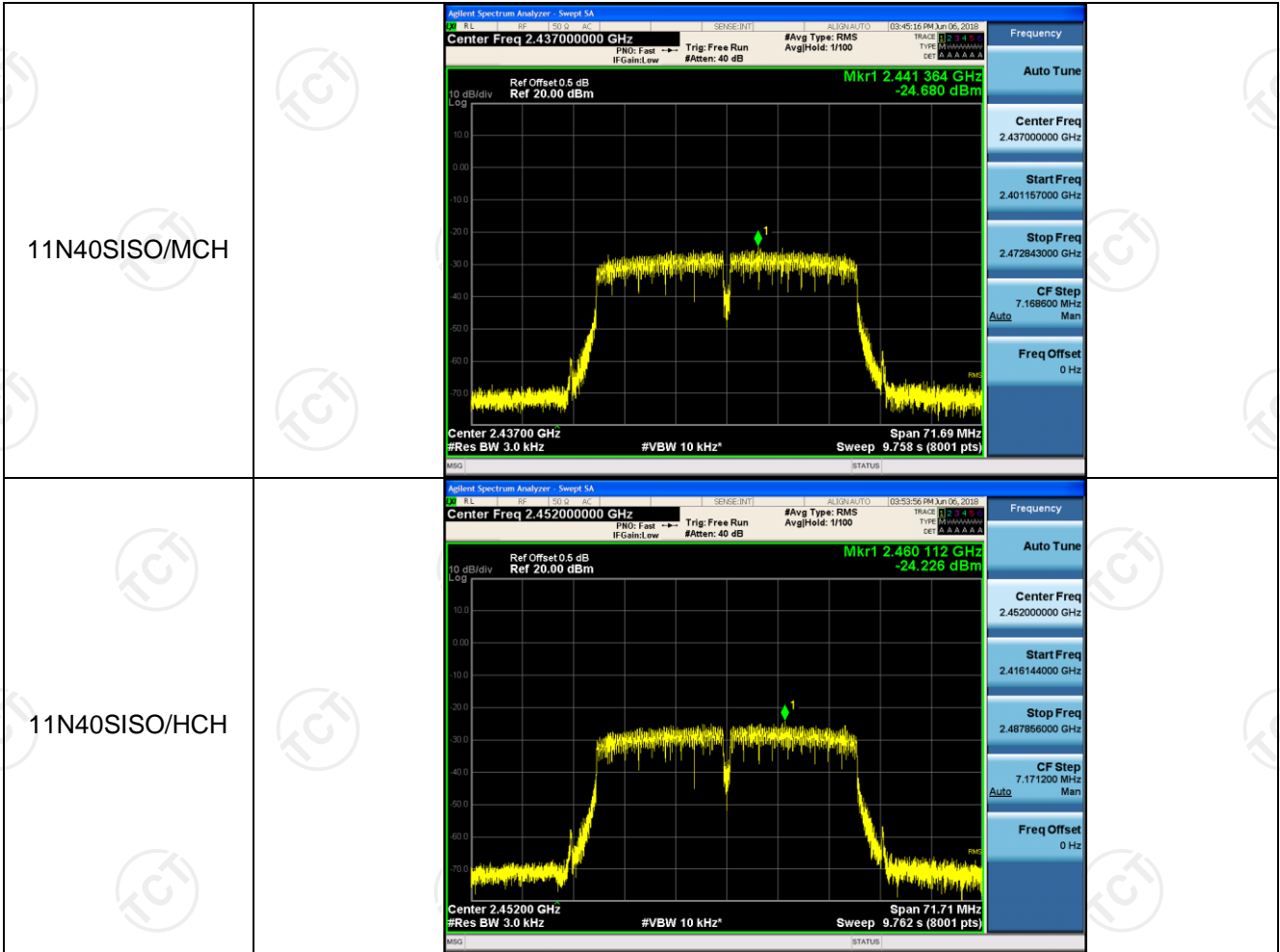
Test Graph



<p>11B/MCH</p>	 <p>Agilent Spectrum Analyzer - Sweep SA Center Freq 2.43700000 GHz #Res BW 3.0 kHz #VBW 10 kHz* Span 29.31 MHz Sweep 4.058 s (8001 pts)</p> <p>Mkr1 2.437686 GHz -18.686 dBm</p> <p>Ref Offset 0.5 dB Ref 20.00 dBm</p> <p>Frequency Auto Tune Center Freq 2.43700000 GHz Start Freq 2.422097000 GHz Stop Freq 2.451903000 GHz CF Step 2.980600 MHz Freq Offset 0 Hz</p>
<p>11B/HCH</p>	 <p>Agilent Spectrum Analyzer - Sweep SA Center Freq 2.46200000 GHz #Res BW 3.0 kHz #VBW 10 kHz* Span 29.31 MHz Sweep 4.058 s (8001 pts)</p> <p>Mkr1 2.462741 GHz -18.656 dBm</p> <p>Ref Offset 0.5 dB Ref 20.00 dBm</p> <p>Frequency Auto Tune Center Freq 2.46200000 GHz Start Freq 2.447097000 GHz Stop Freq 2.476903000 GHz CF Step 2.980600 MHz Freq Offset 0 Hz</p>
<p>11G/LCH</p>	 <p>Agilent Spectrum Analyzer - Sweep SA Center Freq 2.41200000 GHz #Res BW 3.0 kHz #VBW 10 kHz* Span 32.94 MHz Sweep 4.484 s (8001 pts)</p> <p>Mkr1 2.405746 GHz -20.211 dBm</p> <p>Ref Offset 0.5 dB Ref 20.00 dBm</p> <p>Frequency Auto Tune Center Freq 2.41200000 GHz Start Freq 2.396531000 GHz Stop Freq 2.428469000 GHz CF Step 3.293800 MHz Freq Offset 0 Hz</p>

<p>11G/MCH</p>	 <p>Agilent Spectrum Analyzer - Sweep SA Center Freq 2.437000000 GHz #Avg Type: RMS Avg/Hold: 2/100 Ref Offset 0.5 dB Ref 20.00 dBm Mkr1 2.443 590 GHz -20.364 dBm Center 2.43700 GHz #Res BW 3.0 kHz #VBW 10 kHz* Span 32.95 MHz Sweep 4.486 s (8001 pts)</p>	<p>Frequency</p> <p>Auto Tune</p> <p>Center Freq 2.437000000 GHz</p> <p>Start Freq 2.420524000 GHz</p> <p>Stop Freq 2.453476000 GHz</p> <p>CF Step 3.295200 MHz Auto Man</p> <p>Freq Offset 0 Hz</p>
<p>11G/HCH</p>	 <p>Agilent Spectrum Analyzer - Sweep SA Center Freq 2.462000000 GHz #Avg Type: RMS Avg/Hold: 2/100 Ref Offset 0.5 dB Ref 20.00 dBm Mkr1 2.464 137 GHz -19.672 dBm Center 2.46200 GHz #Res BW 3.0 kHz #VBW 10 kHz* Span 32.94 MHz Sweep 4.484 s (8001 pts)</p>	<p>Frequency</p> <p>Auto Tune</p> <p>Center Freq 2.462000000 GHz</p> <p>Start Freq 2.445531000 GHz</p> <p>Stop Freq 2.478469000 GHz</p> <p>CF Step 3.293800 MHz Auto Man</p> <p>Freq Offset 0 Hz</p>
<p>11N20SISO/LCH</p>	 <p>Agilent Spectrum Analyzer - Sweep SA Center Freq 2.412000000 GHz #Avg Type: RMS Avg/Hold: 2/100 Ref Offset 0.5 dB Ref 20.00 dBm Mkr1 2.418 492 98 GHz -19.922 dBm Center 2.41200 GHz #Res BW 3.0 kHz #VBW 10 kHz* Span 35.36 MHz Sweep 4.813 s (8001 pts)</p>	<p>Frequency</p> <p>Auto Tune</p> <p>Center Freq 2.412000000 GHz</p> <p>Start Freq 2.394320000 GHz</p> <p>Stop Freq 2.429680000 GHz</p> <p>CF Step 3.536000 MHz Auto Man</p> <p>Freq Offset 0 Hz</p>

<p>11N20SISO/MCH</p>	 <p>Agilent Spectrum Analyzer - Sweep SA Center Freq 2.437000000 GHz Ref Offset 0.5 dB Ref 30.00 dBm Mkr1 2.443493 GHz -19.658 dBm Center 2.43700 GHz #Res BW 3.0 kHz #VBW 10 kHz* Span 35.31 MHz Sweep 4.807 s (8001 pts)</p>	<p>Frequency</p> <p>Auto Tune</p> <p>Center Freq 2.437000000 GHz</p> <p>Start Freq 2.419344000 GHz</p> <p>Stop Freq 2.454656000 GHz</p> <p>CF Step 3.531200 MHz Auto Man</p> <p>Freq Offset 0 Hz</p>
<p>11N20SISO/HCH</p>	 <p>Agilent Spectrum Analyzer - Sweep SA Center Freq 2.462000000 GHz Ref Offset 0.5 dB Ref 20.00 dBm Mkr1 2.465394 GHz -19.772 dBm Center 2.46200 GHz #Res BW 3.0 kHz #VBW 10 kHz* Span 35.30 MHz Sweep 4.806 s (8001 pts)</p>	<p>Frequency</p> <p>Auto Tune</p> <p>Center Freq 2.462000000 GHz</p> <p>Start Freq 2.444349000 GHz</p> <p>Stop Freq 2.479651000 GHz</p> <p>CF Step 3.530200 MHz Auto Man</p> <p>Freq Offset 0 Hz</p>
<p>11N40SISO/LCH</p>	 <p>Agilent Spectrum Analyzer - Sweep SA Center Freq 2.422000000 GHz Ref Offset 0.5 dB Ref 20.00 dBm Mkr1 2.425416 GHz -23.498 dBm Center 2.42200 GHz #Res BW 3.0 kHz #VBW 10 kHz* Span 71.73 MHz Sweep 9.765 s (8001 pts)</p>	<p>Frequency</p> <p>Auto Tune</p> <p>Center Freq 2.422000000 GHz</p> <p>Start Freq 2.386134000 GHz</p> <p>Stop Freq 2.457866000 GHz</p> <p>CF Step 7.173200 MHz Auto Man</p> <p>Freq Offset 0 Hz</p>

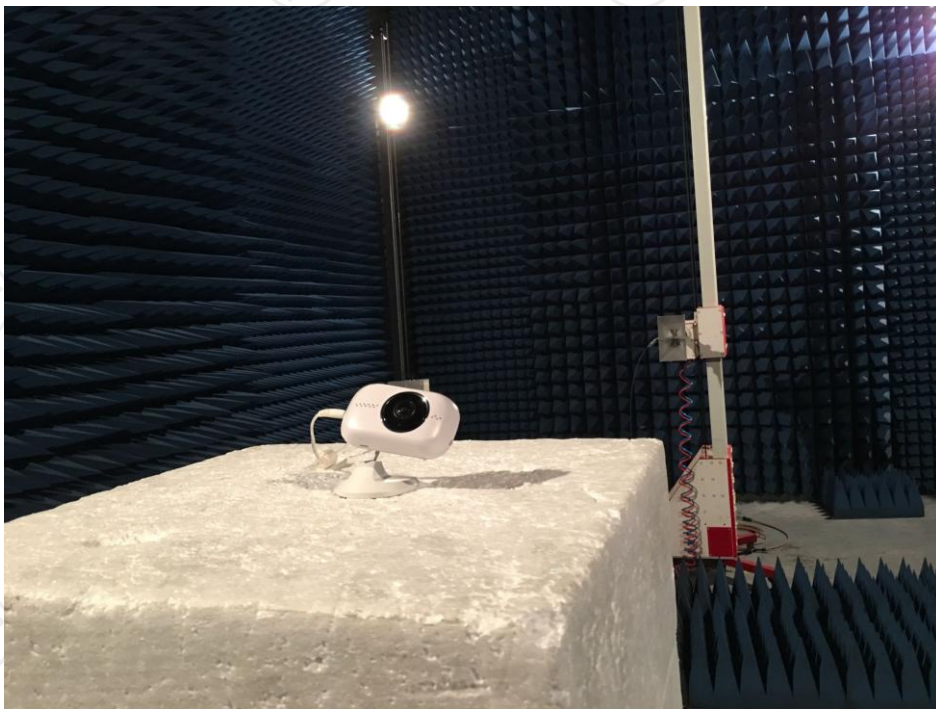
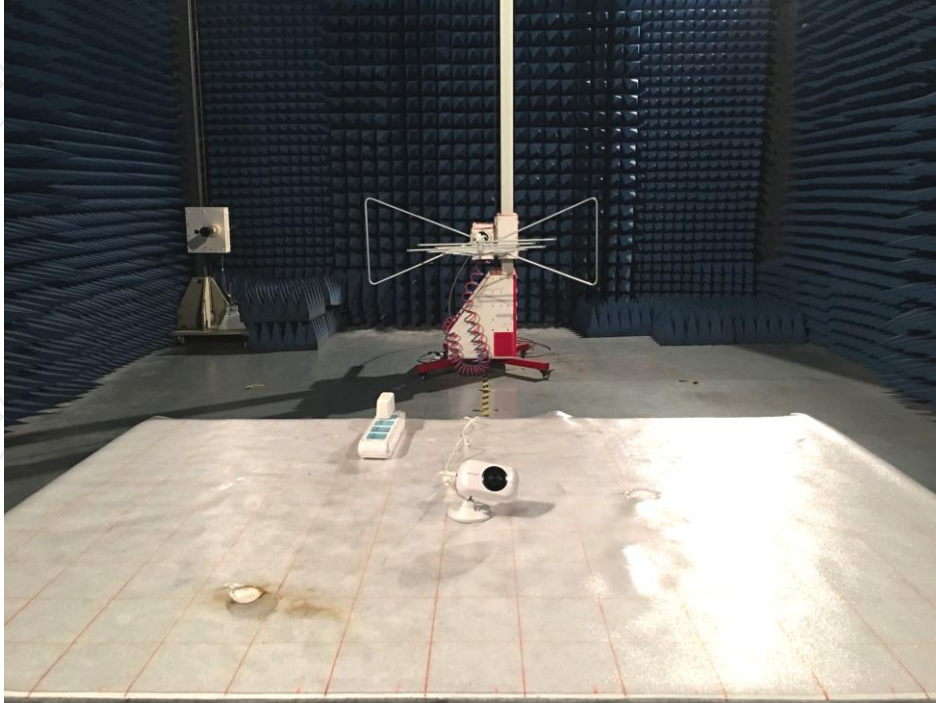


Appendix B: Photographs of Test Setup

Product: 1080p Panoramic Wi-Fi Camera

Model: AWF21

Radiated Emission

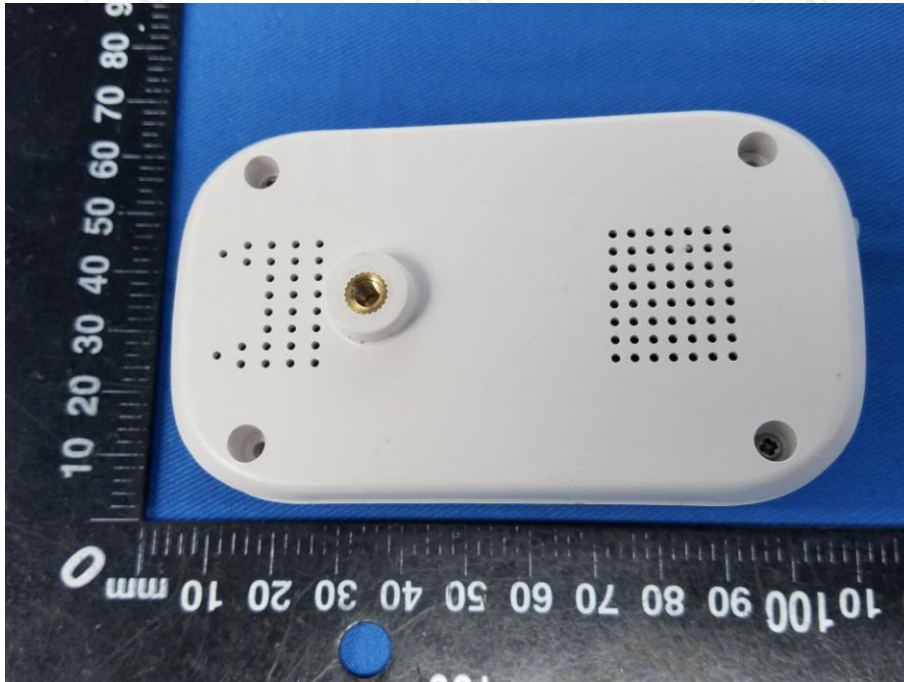


Conducted Emission



Appendix C: Photographs of EUT Product: 1080p Panoramic Wi-Fi Camera Model: AWF21 External Photos



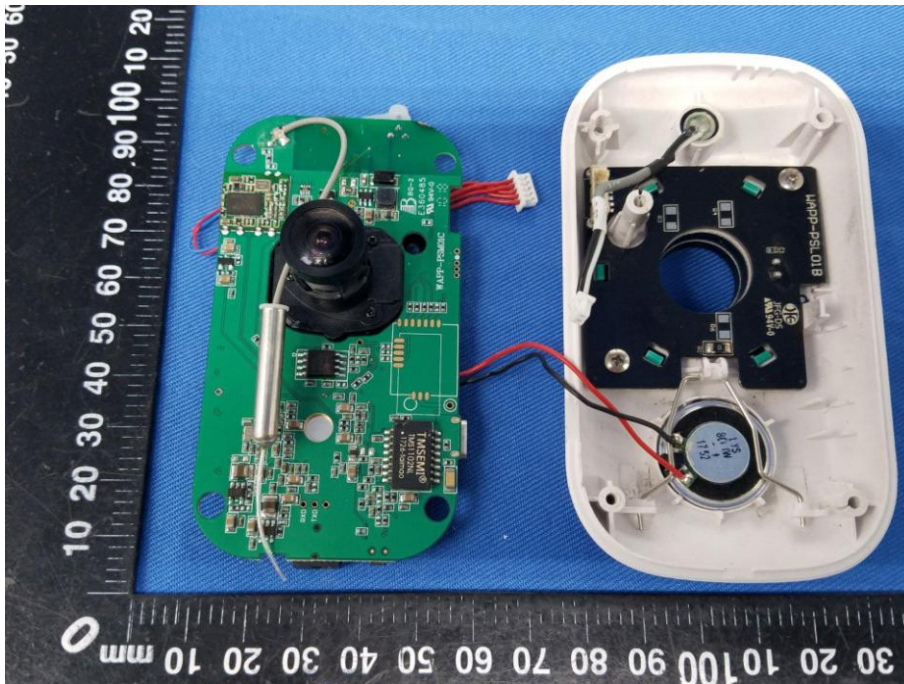


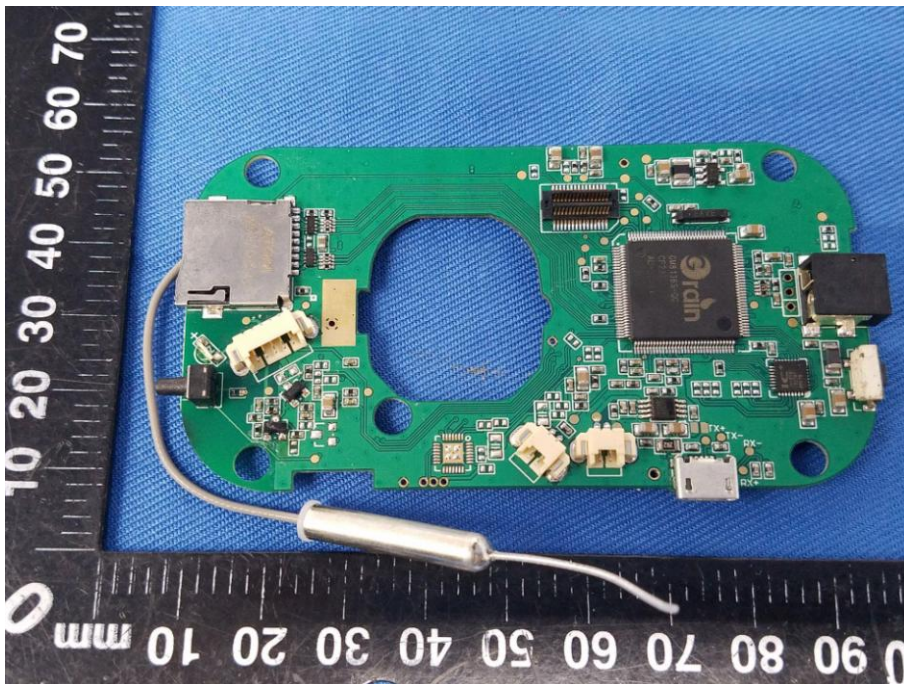
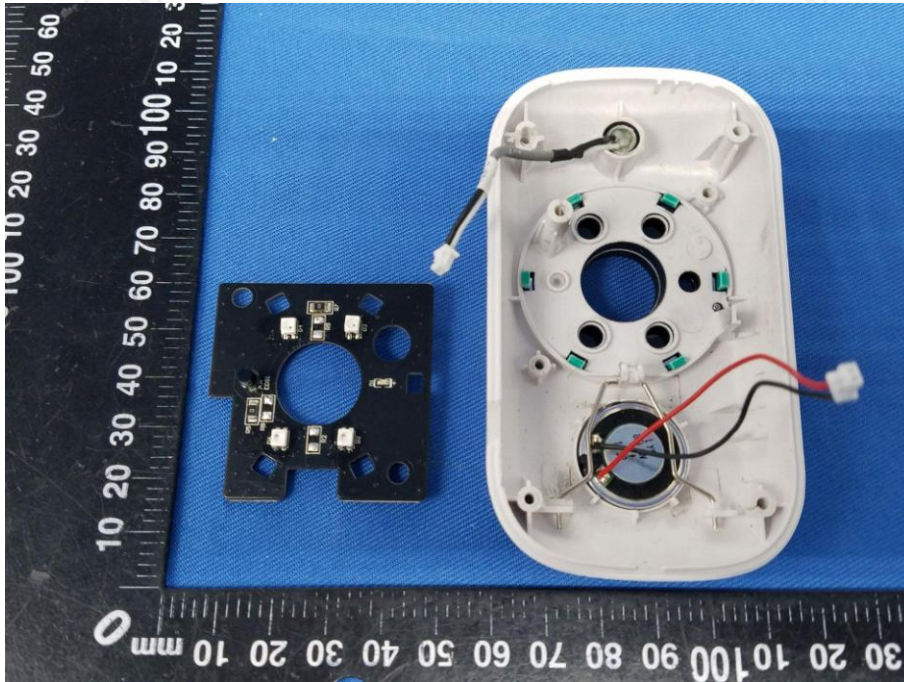


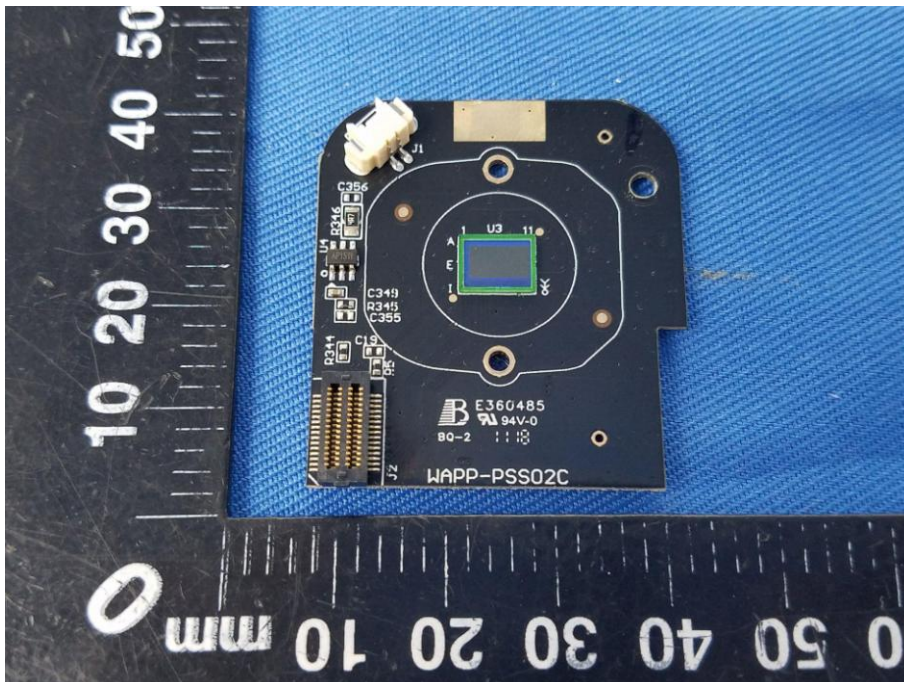
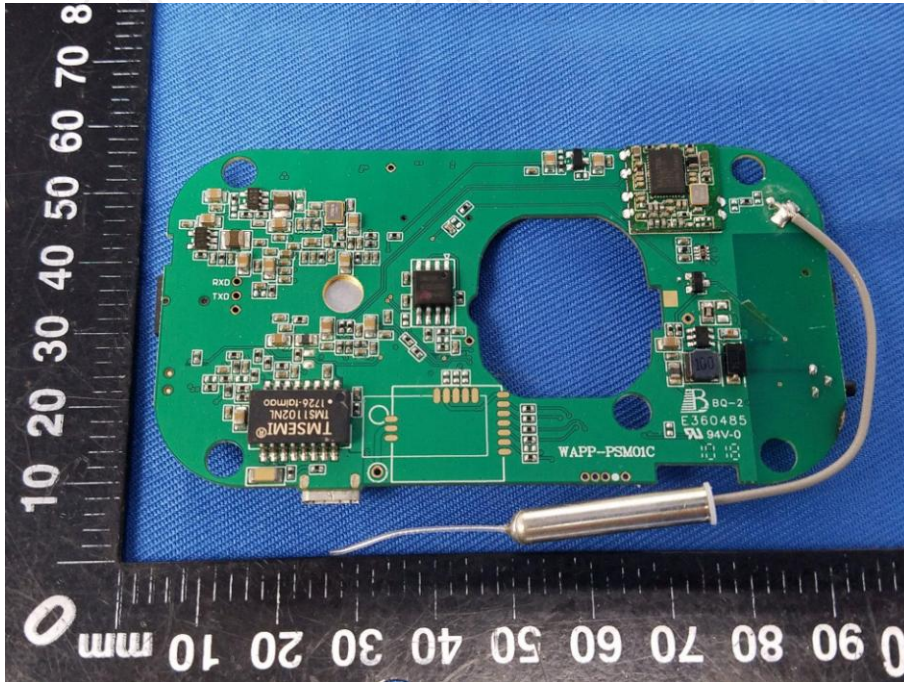


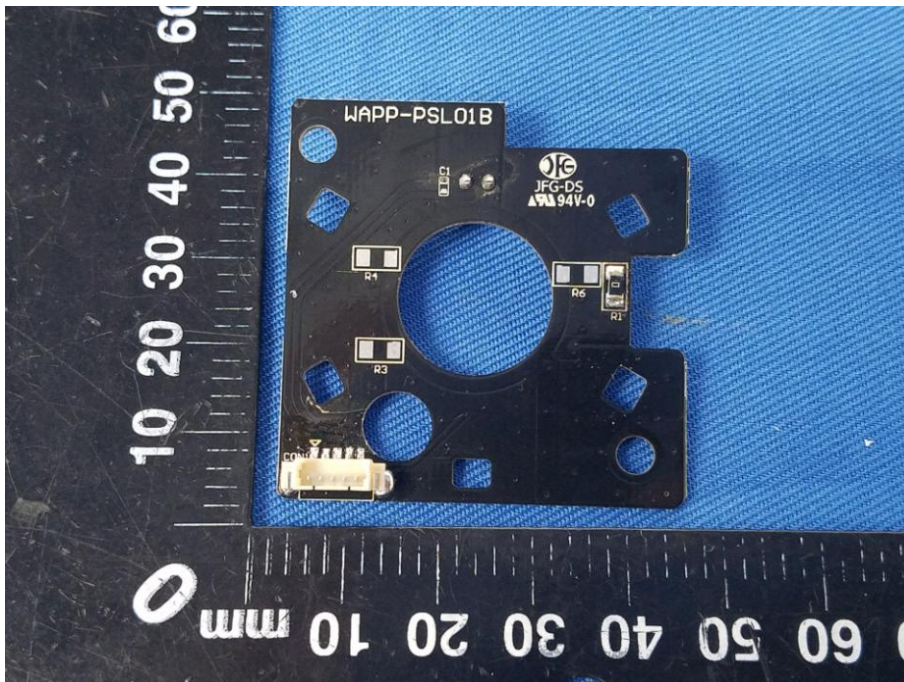
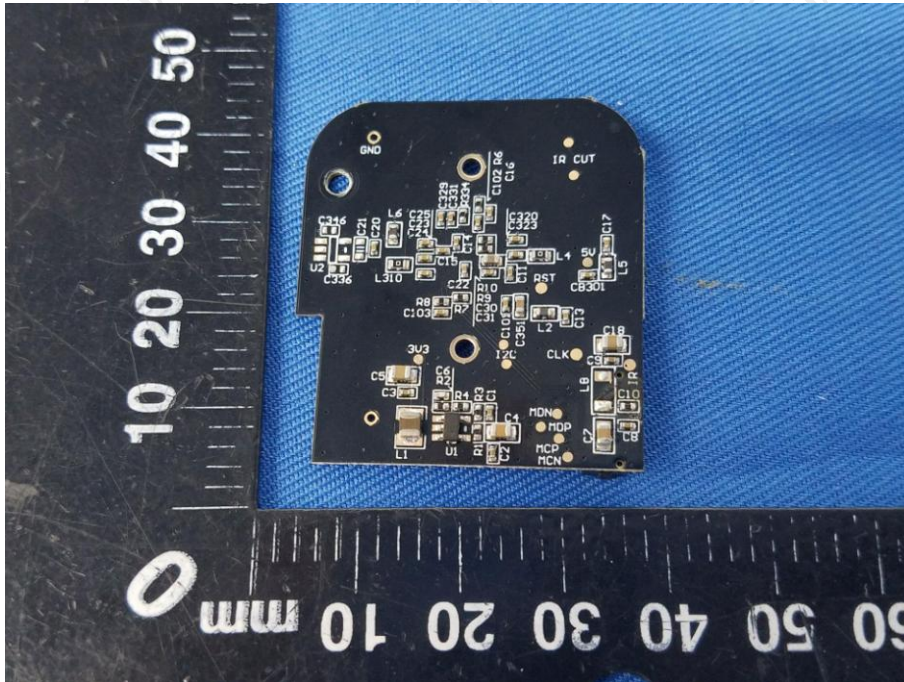


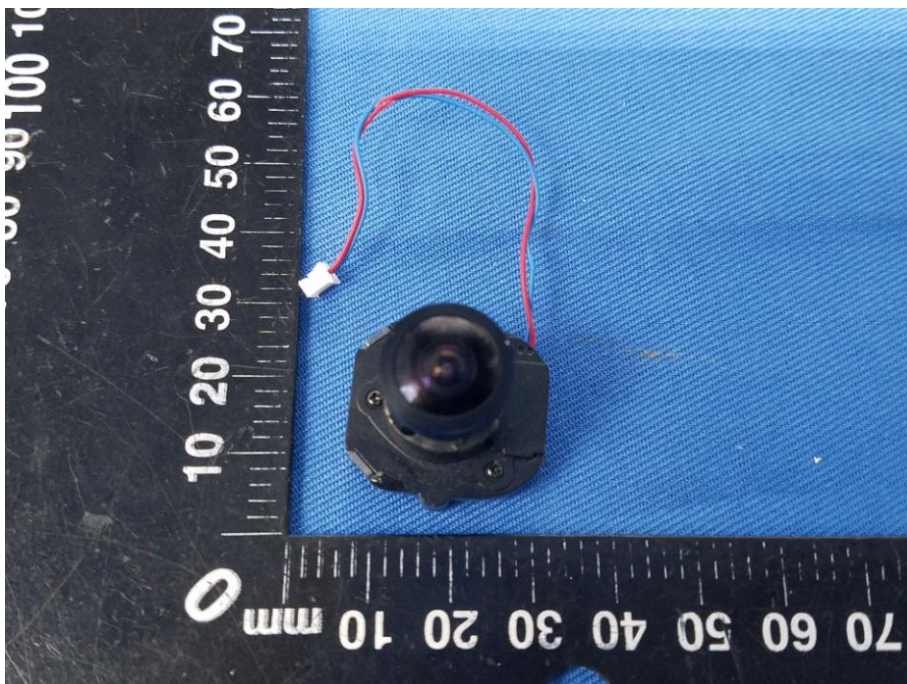
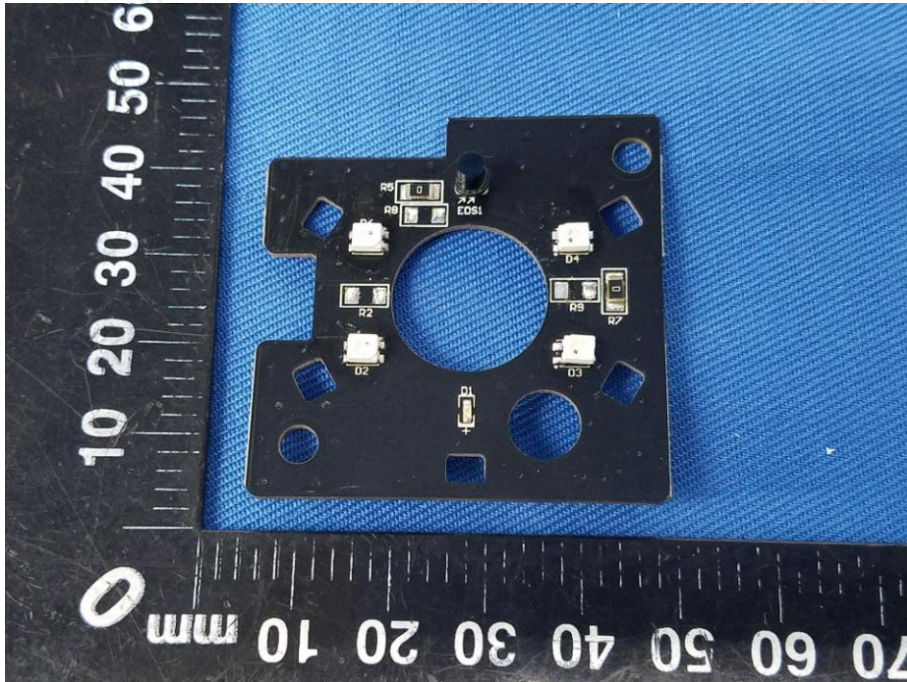
Product: 1080p Panoramic Wi-Fi Camera
Model: AWF21
Internal Photos

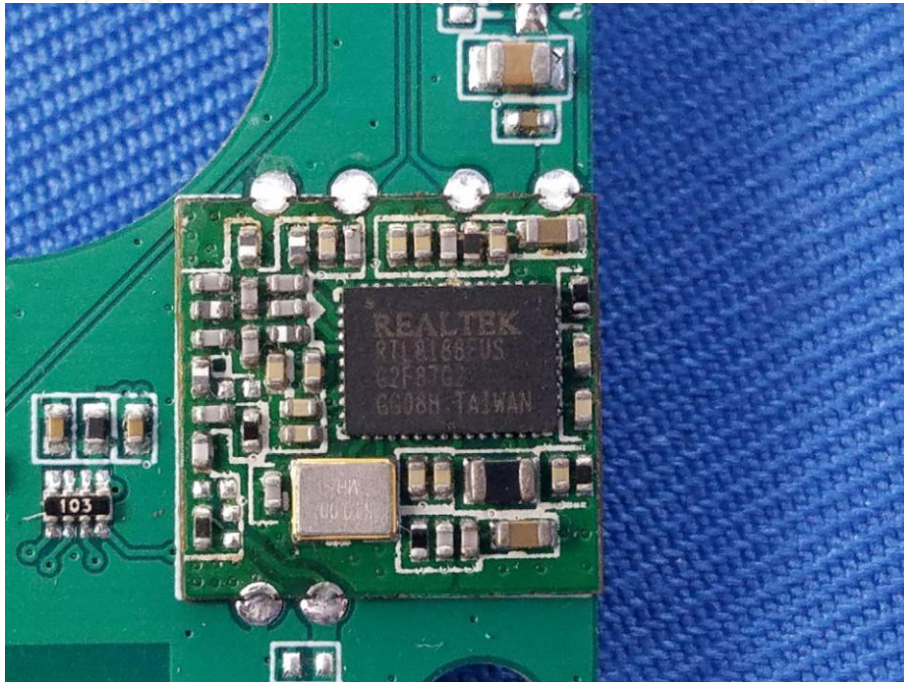












*******END OF REPORT*******