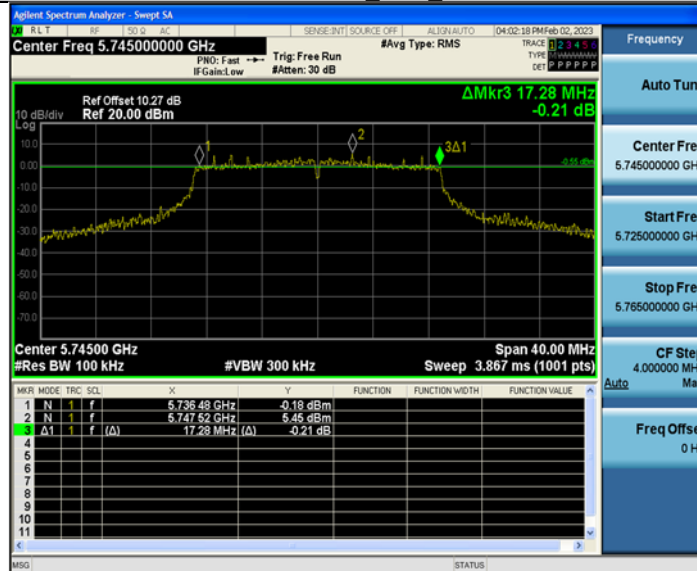


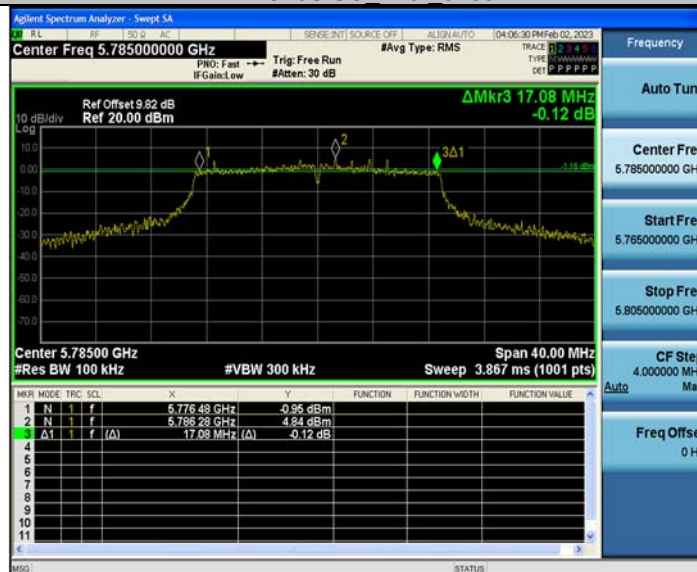
## 11N20SISO\_Ant1\_5825



## 11AC20SISO\_Ant1\_5745



## 11AC20SISO\_Ant1\_5785





## Appendix B: Duty Cycle

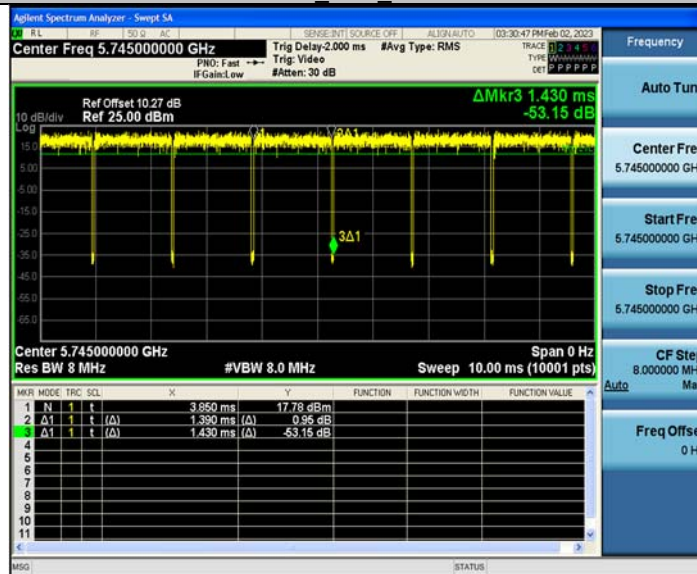
### Test Result

Test Mode	Antenna	Frequency [MHz]	Transmission Duration [ms]	Transmission Period [ms]	Duty Cycle [%]
11A	Ant1	5180	1.39	1.44	96.53
		5200	1.39	1.43	97.20
		5240	1.39	1.44	96.53
		5745	1.39	1.43	97.20
		5785	1.40	1.44	97.22
		5825	1.39	1.43	97.20
11N20SISO	Ant1	5180	1.30	1.35	96.30
		5200	1.31	1.35	97.04
		5240	1.31	1.35	97.04
		5745	1.31	1.35	97.04
		5785	1.31	1.35	97.04
		5825	1.30	1.35	96.30
11AC20SISO	Ant1	5180	1.31	1.36	96.32
		5200	1.31	1.36	96.32
		5240	1.32	1.36	97.06
		5745	1.32	1.36	97.06
		5785	1.32	1.36	97.06
		5825	1.31	1.36	96.32

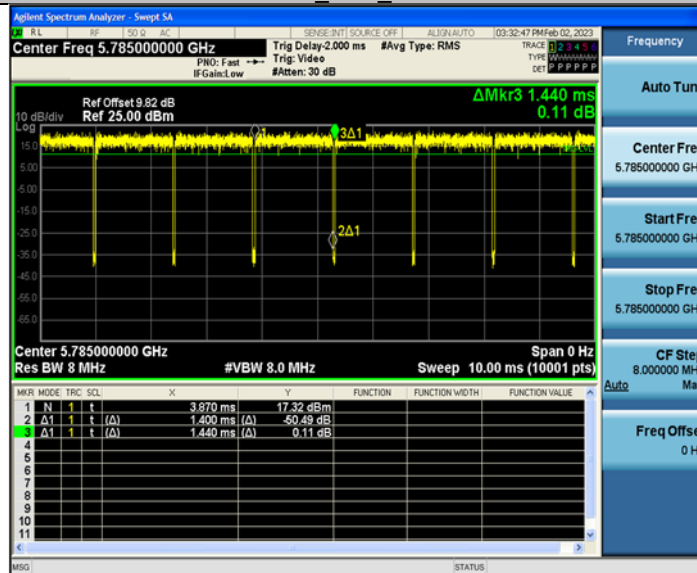
## Test Graphs



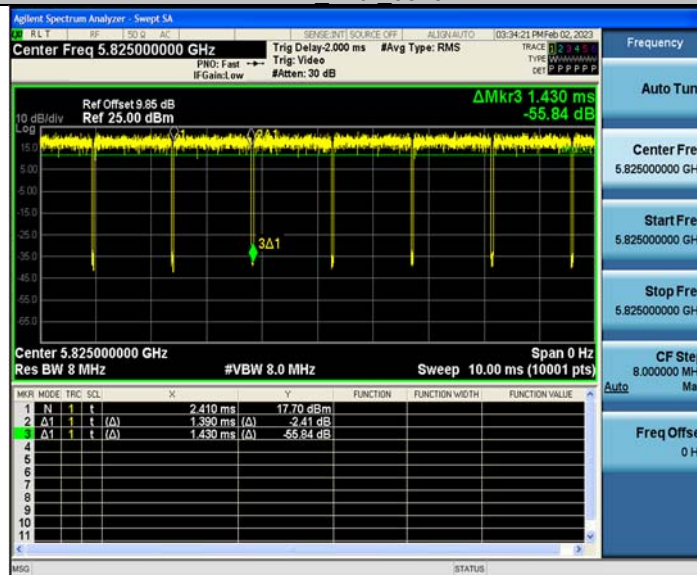
## 11A\_Ant1\_5745



## 11A\_Ant1\_5785



## 11A\_Ant1\_5825








**11AC20SISO\_Ant1\_5240**

Frequency	
Auto Tune	
Center Freq	5.24000000 GHz
Start Freq	5.24000000 GHz
Stop Freq	5.24000000 GHz
CF Step	8.000000 MHz
Auto	Man
Freq Offset	0 Hz





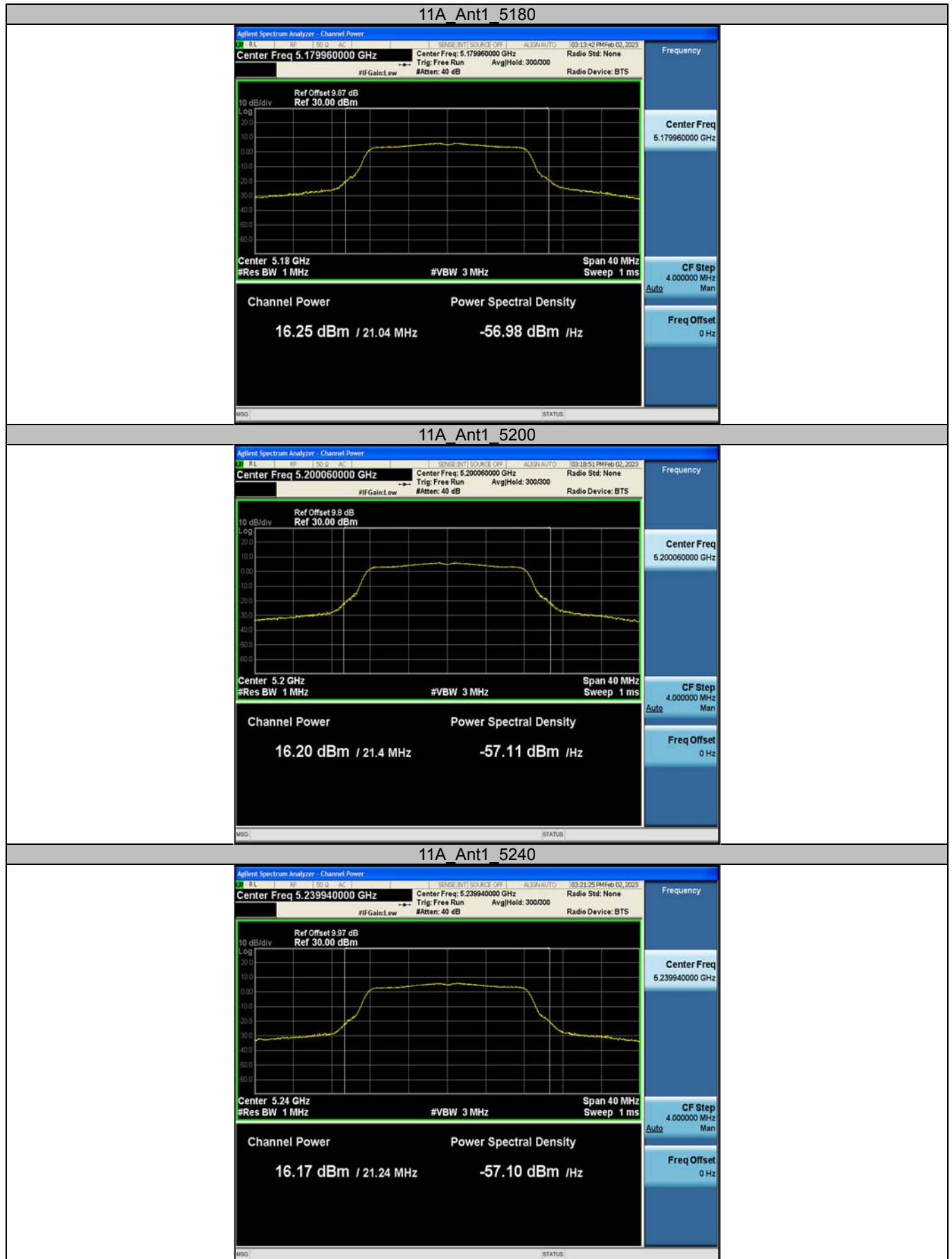
## Appendix C: Maximum conducted output power

### Test Result Channel Power

Test Mode	Antenna	Frequency [MHz]	Channel Power [dBm]	Duty Cycle [%]	DC Factor [dBm]	Result [dBm]	Limit [dBm]	Verdict
11A	Ant1	5180	16.10	96.53	0.15	16.25	≤23.98	PASS
		5200	16.08	97.20	0.12	16.20	≤23.98	PASS
		5240	16.02	96.53	0.15	16.17	≤23.98	PASS
		5745	15.99	97.20	0.12	16.11	≤30.00	PASS
		5785	15.70	97.22	0.12	15.82	≤30.00	PASS
		5825	15.86	97.20	0.12	15.98	≤30.00	PASS
11N20SISO	Ant1	5180	15.81	96.30	0.16	15.97	≤23.98	PASS
		5200	16.19	97.04	0.13	16.32	≤23.98	PASS
		5240	16.19	97.04	0.13	16.32	≤23.98	PASS
		5745	16.13	97.04	0.13	16.26	≤30.00	PASS
		5785	15.73	97.04	0.13	15.86	≤30.00	PASS
		5825	15.89	96.30	0.16	16.05	≤30.00	PASS
11AC20SIS O	Ant1	5180	15.80	96.32	0.16	15.96	≤23.98	PASS
		5200	16.36	96.32	0.16	16.52	≤23.98	PASS
		5240	16.20	97.06	0.13	16.33	≤23.98	PASS
		5745	16.35	97.06	0.13	16.48	≤30.00	PASS
		5785	15.77	97.06	0.13	15.90	≤30.00	PASS
		5825	16.06	96.32	0.16	16.22	≤30.00	PASS

Note : The Duty Cycle Factor is compensated in the graph.

## Test Graphs















## Appendix D: Maximum power spectral density

### Test Result

Test Mode	Antenna	Frequency [MHz]	Result [dBm/MHz]	Limit [dBm/MHz]	Verdict
11A	Ant1	5180	6.08	≤11.00	PASS
		5200	6.05	≤11.00	PASS
		5240	6.02	≤11.00	PASS
		5745	3.65	≤30.00	PASS
		5785	2.91	≤30.00	PASS
		5825	3.14	≤30.00	PASS
11N20SISO	Ant1	5180	5.52	≤11.00	PASS
		5200	6.09	≤11.00	PASS
		5240	6.11	≤11.00	PASS
		5745	3.39	≤30.00	PASS
		5785	2.61	≤30.00	PASS
		5825	3.11	≤30.00	PASS
11AC20SISO	Ant1	5180	5.81	≤11.00	PASS
		5200	6.33	≤11.00	PASS
		5240	6.02	≤11.00	PASS
		5745	3.43	≤30.00	PASS
		5785	2.79	≤30.00	PASS
		5825	3.23	≤30.00	PASS

Note : 1.The Result and Limit Unit is dBm/500 kHz in the band 5.725–5.85 GHz.

2.The Duty Cycle Factor and RBW Factor is compensated in the graph.

## Test Graphs

11A Ant1 5180



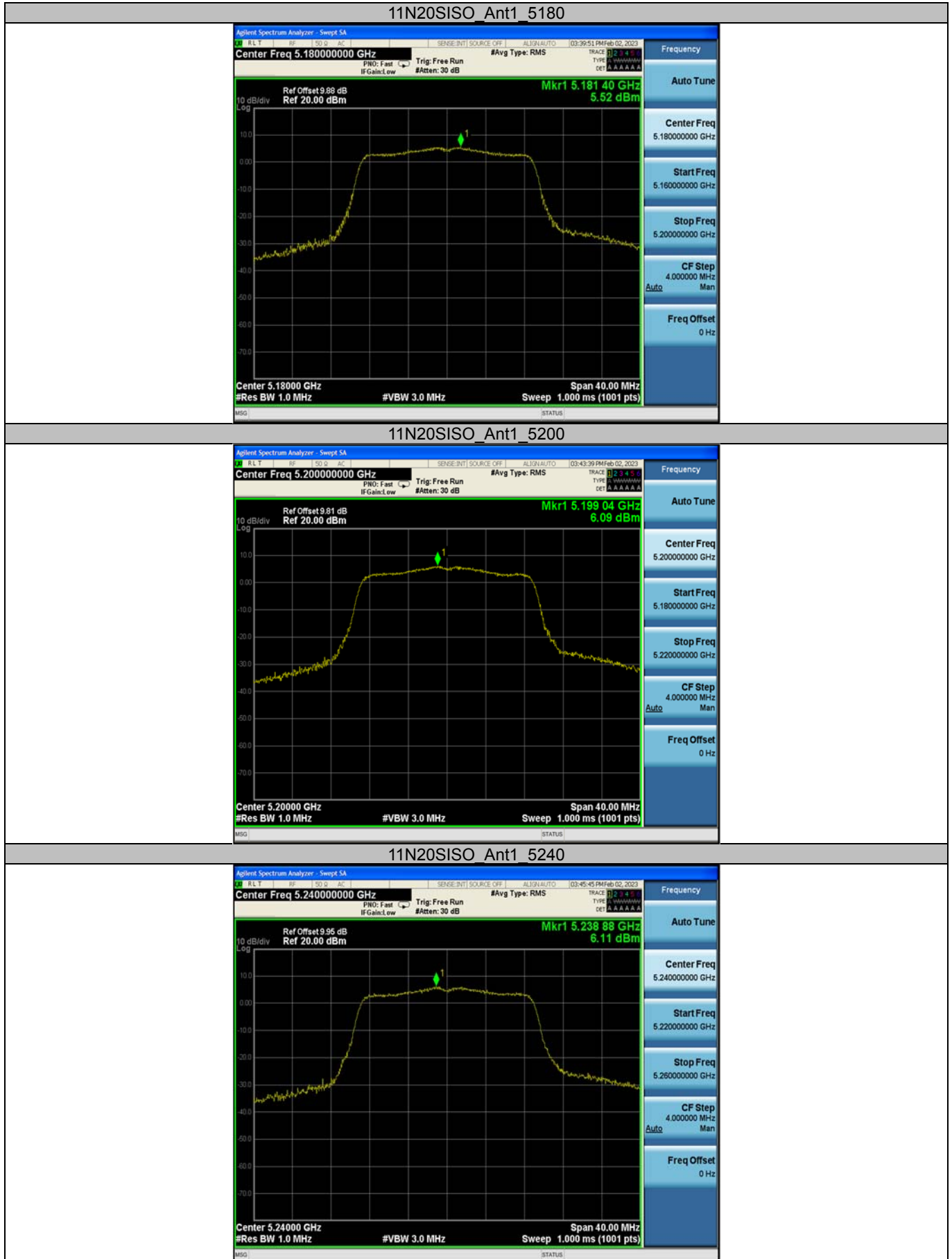
11A Ant1 5200



11A Ant1 5240







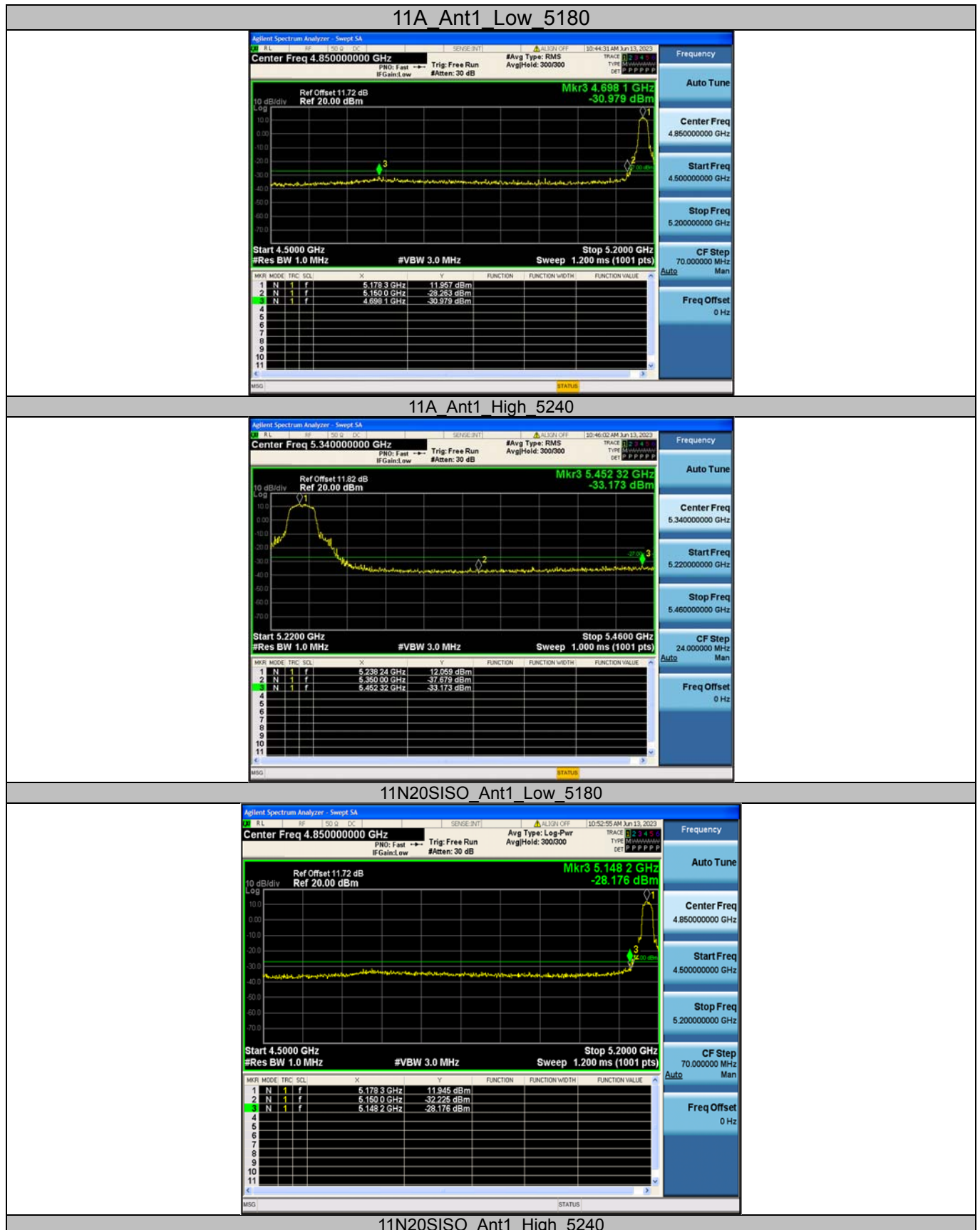




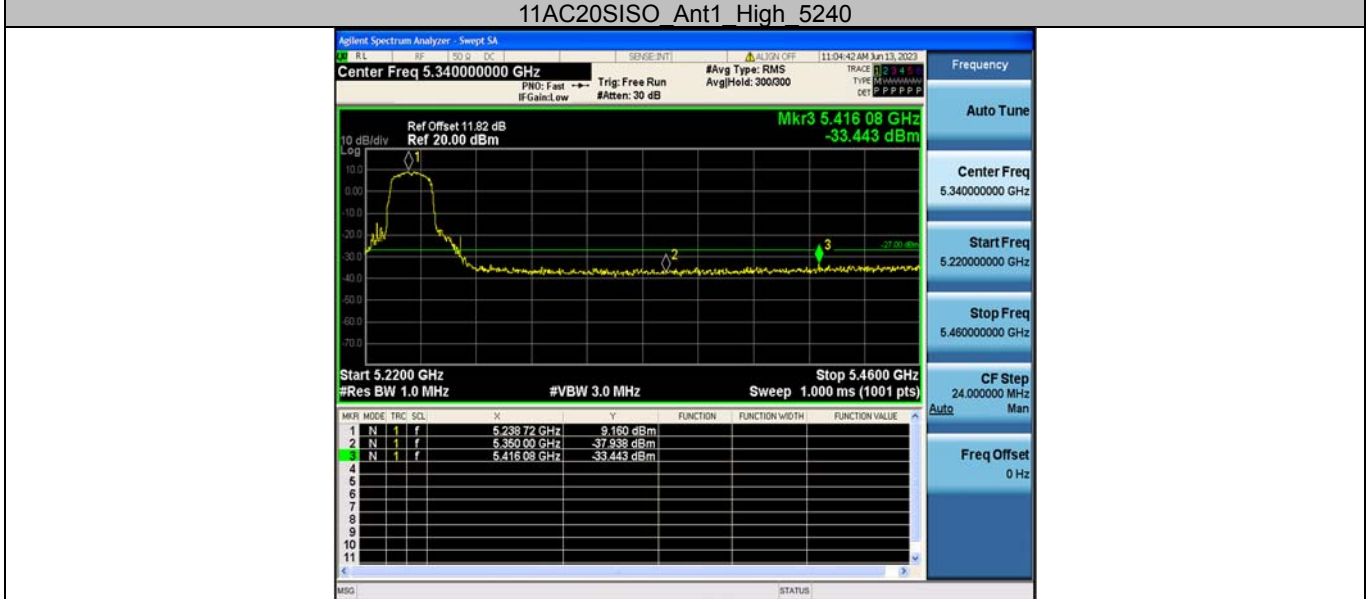
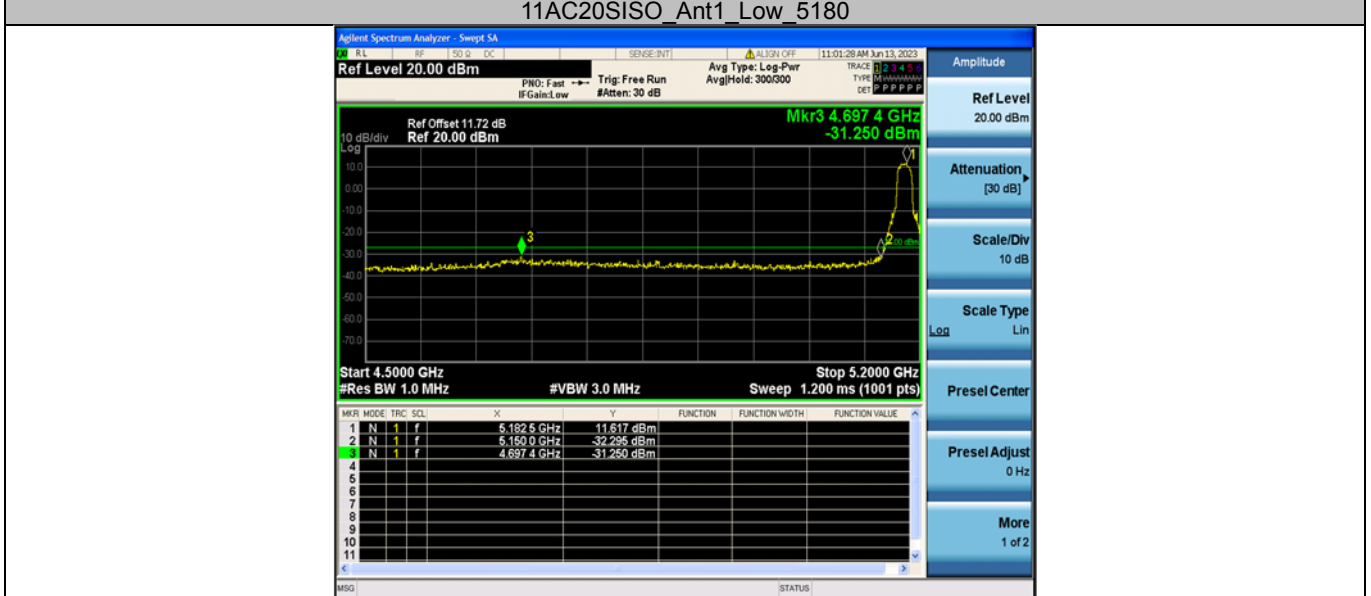


## Appendix E: Band edge measurements

Test Graphs B1







## Test Graphs B4

11A Ant1 Low 5745



11A Ant1 High 5825



11N20SISO Ant1 Low 5745



11N20SISO Ant1 High 5825



11AC20SISO\_Ant1\_Low\_5745



11AC20SISO Ant1 High 5825



## Appendix F: Conducted Spurious Emission

### Test Graphs

