

OUTSIDE

STORAGE/MICRO SD CARDS

This is compatible with **8GB,16GB,32GB and 64GB** capacity microSD, microSDHC, and microSDHX memory cards. You must use a microSD card with a Class 10 speed rating. We recommend using a brand name memory card for max reliability in high-vibration activities. To access your photos without the app remove the SD card from the camera and use an extracting cord, or insert it directly into a computer or compatible device.

CHARGE THE BATTERY

1. Connect the camera to a computer or USB power supply.
2. **The charging status light blinking while the battery is charging (charging time: 3-5 hours)**
3. **The charging status light stop blinking and remains ON when the battery is fully charged.**

CAMERA APP

Connecting to the **XDV** App

This app lets you control your camera remotely using a smartphone or tablet. Features include full camera control, live preview, photo playback and sharing of select content and more.

1. Download the **XDV** App to your smartphone or tablet at the **Google Play** or **Apple App Store**.
2. Turn the Action Camera **ON**.
3. Make sure the camera is in **Camera Mode**.
4. Press the **UP** Button to turn on the **Wi-Fi***. In your smartphone or tablet's Wi-Fi settings, select "**4K action cam**" from the list.
5. Enter the password **showed on srceen**. Once downloaded, open the **XDV** App on your smartphone or tablet and let the fun begin.

*Short press the **UP** Button to turn OFF Wi-Fi.

The **XDV** App is compatible with smartphones and tablets listed below:

- iPhone 5, 5S, 6 & 6 plus (iOS 8)
- iPad Air & Mini (iOS 8)
- Android 4X Quad-core devices

COMPATIBILITY

Compatibility varies by device. Content playback, sharing and access to the camera's memory card might not be available on some devices.

Micro SD Card	1080p 30fps	720p 60fps
32 GB	240 mins	320 mins
16 GB	120 mins	160 mins
8 GB	60 mins	80 mins

TECH SPECS

Video Resolution: 4K/2.7K/1080P/720P
Sound: OFF/ON
Time Lapse Video: OFF, 0.5s, 1s, 2s, 5s, 10s, 30s and 60 seconds
Looping Video: OFF/ON
Slow Motion: 1080P/720P
Zoom: X4
Photo Resolution: 16M/12M/8M/5M/2M
Time Shot: OFF,3s, 5s, 10s and 20 seconds
Auto Shot: OFF, 3s, 10s, 15s, 20s and 30 seconds
Drama Shot: OFF, 3s, 5s and 10 seconds
Exposure: -3.0 to +3.0
Language: English, simplified Chinese, traditional Chinese, Korean, Russian, French, German, Italian, Spanish, Portuguese, Japanese
Date & Time: YYYY/MM/DD, HH/MM/SS

MADE IN CHINA

SAFETY

The Action Camera allows you to record every journey from start to finish. Great for holidays, cycling, road races, hiking, etc. You can neatly attach the camera to handle bars, helmets, boats, and much more. Please follow the below procedures before recording.

- **DO NOT HOLD CAMERA WHILE DRIVING**
- **DO NOT ADJUST CAMERA WHILE MOVING (CLIMBING, DRIVING, BIKING, ETC.)**
- **DO NOT ALLOW CHILDREN TO PLAY WITH CAMERA**
- **ENSURE MOUNTS ARE PLACED CORRECTLY AND SECURELY PRIOR TO SETTING OFF.**
- **ENSURE WATERPROOF HOUSING IS SECURELY FASTENED PRIOR TO EMERGING INTO WATER.**



ACTION CAMERA

Wi-Fi • Waterproof • **Ultra**HD
Quick Start Guide
7195-230K



HDMI



4K
H.264
UltraHD



Waterproof



1.5 Hours



WiFi

CONGRATULATIONS on your new ACTION CAMERA

Now let's get started! This is your Instruction manual to help you learn the basics of capturing life's most incredible moments!

Power ON:
Press the **Power/Mode** Button

Power OFF:
Press and hold the **Power/Mode** Button

BASICS



ACCESSORIES



ACCESSORIES LISTED

1. Clip Mount
2. Curved Mount
3. Screw-in Mount
4. Long Mount
5. Sideways Mount
6. Short Mount
7. Base Mounts
8. Secondary Backing
9. Waterproof Case
10. Back Clip
11. Tether & Adhesive Pads
12. Handlebar/Pole Mount
13. Camera Straps
14. Camera Wraps
15. Micro-USB Charging Cable

Also included: Micro cleaning cloth, instruction manual, and cable ties.

MODES

Turn the Action Camera ON and repeatedly press the **Power/Mode** Button to cycle through the camera mode settings. They will appear in this order:

Video, Photo, Slow Motion, Play Back and Settings.



RECORDING VIDEO

Press the top OK button once to start and press once again to stop the recording.
Holding down the side UP or DOWN buttons will activate the digital zoom function up to X4 zoom.
Briefly pressing the side UP button activates the **WIFI** mode.
Briefly pressing the side DOWN button will activate or deactivate showing a microphone icon on the bottom left of the screen with a line through it if audio recording is switched off

PHOTO MODE

Verify you're in Photo Mode (Note: the Photo icon will show on the screen). To take a photo, press the Shutter/Select Button. A camera shutter noise will sound.

SLOW MOTION MODE

Verify you're in **SLOW MOTION** Mode (Note: the **SLOW MOTION** icon will show on the screen). In **SLOW MOTION** Mode, your camera takes **SLOW MOTION** Video.

PLAYBACK

1. **Switch to Play Back Mode by short press Mode Button in any Modes.**
2. Select either the **Video** or **Photo** icon from the menu screen. Use the **Arrows** to control video or sort through the images.
3. **Press OK Button to begin or stop playing back.**
4. To return to the **Playback** menu use the **Power** Button.

SETTINGS

Switch to Setting Mode by short press Mode Button in any Modes.

Press the **Shutter/OK** Button to enter the settings menu, and then again to select a setting. Repeatedly press the **Power/Mode** or the **Up/Down** Button(s) to select the desired option. To go back to the previous screen or exit the settings menu, press the **Power/Mode** Button, press the "X" to exit.

(Note:
Slow Motion: HD 720P or Full HD 1080P is optional for slow motion. The slow multiple are different.
Loop Recording/Driving Mode: Use this mode to record multiple segments as a car Dash Cam
Drama shot: Take multiple single photos in 1 second.
Time Lapse Video: Record a single frame at each time period so when played back, the video will be speeded up dramatically. This mode is ideal for filming things which happen slowly over several minutes or even hours for fast playback.
Web cam: Connect the camera to computer and use it as Web camera.

4.460"
113.294 mm

INSIDE

MOUNTING

For best results, use the provided accessories to mount your 1080p High Definition Action Camera.

The following imagery shows and demonstrates how to piece the mounts together. Descriptions and numbers are placed to indicate the pieces and how to piece them together.

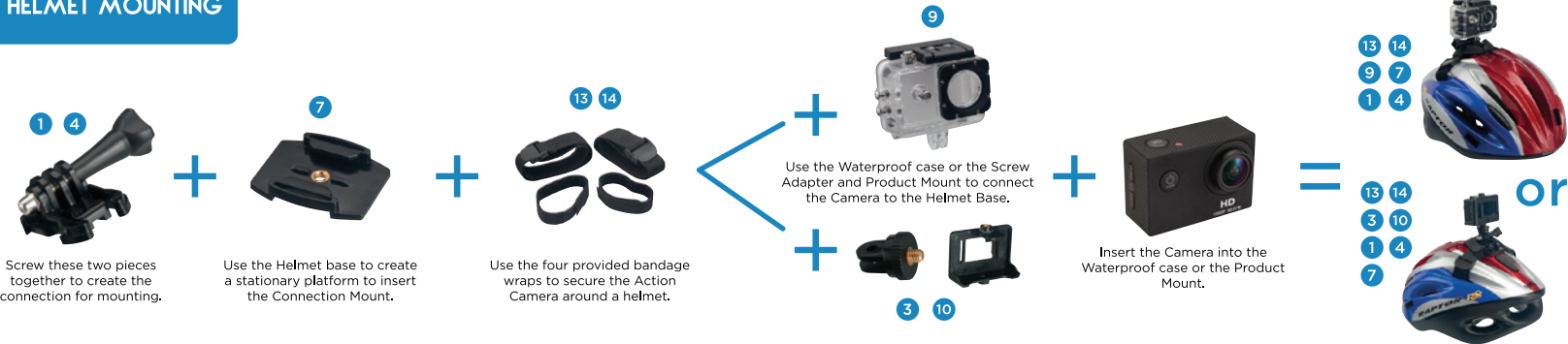
MOUNTING



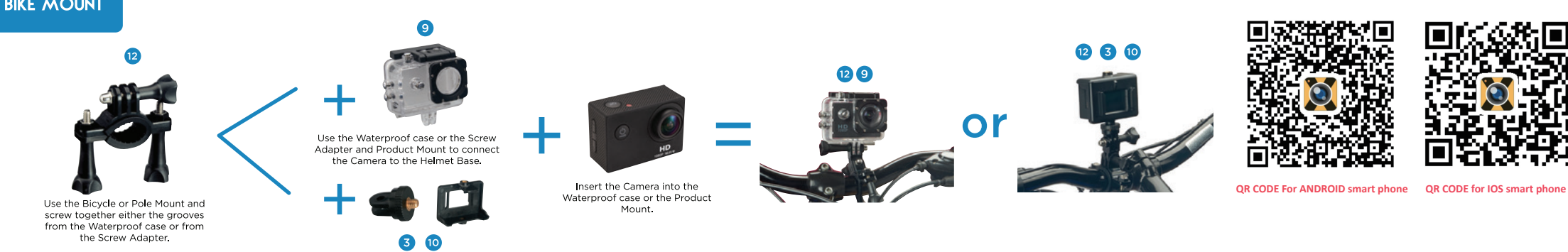
BASE MOUNTING



HELMET MOUNTING



BIKE MOUNT



4.460"
113.294 mm

Warning:

changes or modifications not expressly approved by the party responsible for compliance could void the user's authority to operate the equipment.

This device complies with Part 15 of the FCC Rules. Operation is subject to the following two conditions: (1) this device may not cause harmful interference, and (2) this device must accept any interference received, including interference that may cause undesired operation. changes or modifications not expressly approved by the party responsible for compliance could void the user's authority to operate the equipment.

NOTE: This equipment has been tested and found to comply with the limits for a Class B digital device, pursuant to Part 15 of the FCC Rules. These limits are designed to provide reasonable protection against harmful interference in a residential installation. This equipment generates, uses and can radiate radio frequency energy and, if not installed and used in accordance with the instructions, may cause harmful interference to radio communications. However, there is no guarantee that interference will not occur in a particular installation. If this equipment does cause harmful interference to radio or television reception, which can be determined by turning the equipment off and on, the user is encouraged to try to correct the interference by one or more of the following measures:

- Reorient or relocate the receiving antenna.
- Increase the separation between the equipment and receiver.
- Connect the equipment into an outlet on a circuit different from that to which the receiver is connected.
- Consult the dealer or an experienced radio/TV technician for help.

NOTE: This device and its antenna(s) must not be co-located or operation in conjunction with any other antenna or transmitter.

FCC 20cm Statement

This equipment complies with FCC radiation exposure limits set forth for an uncontrolled environment. This equipment should be installed and operated with a minimum distance of 20cm between the radiator & your body. This transmitter must not be co-located or operating in conjunction with any other antenna or transmitter