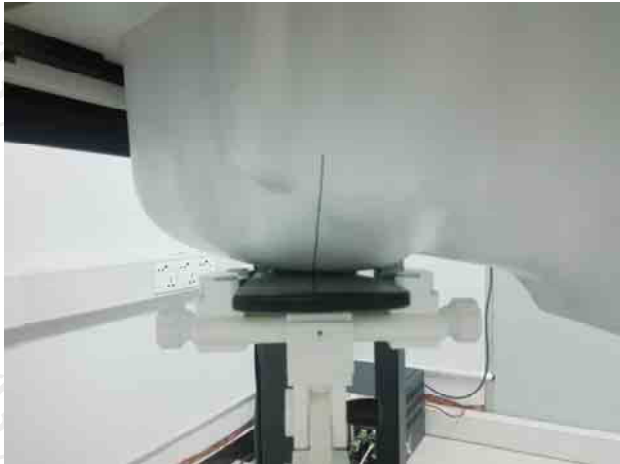


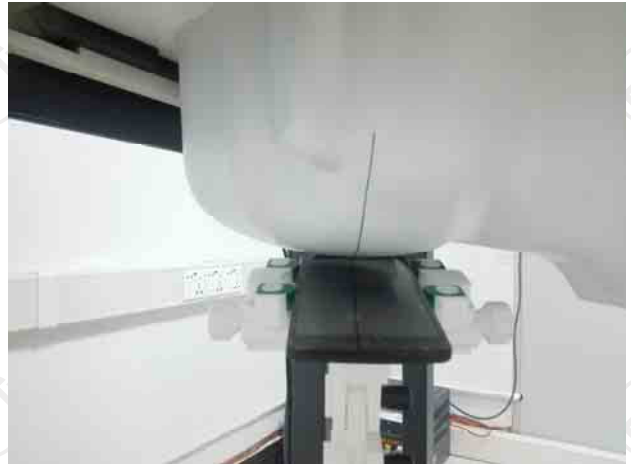
**Appendix A: EUT Photos**



**Appendix B: Test Setup Photos**



Right Cheek



Right Tilted



Left Cheek



Left Tilted



Body worn – Front(5 mm)



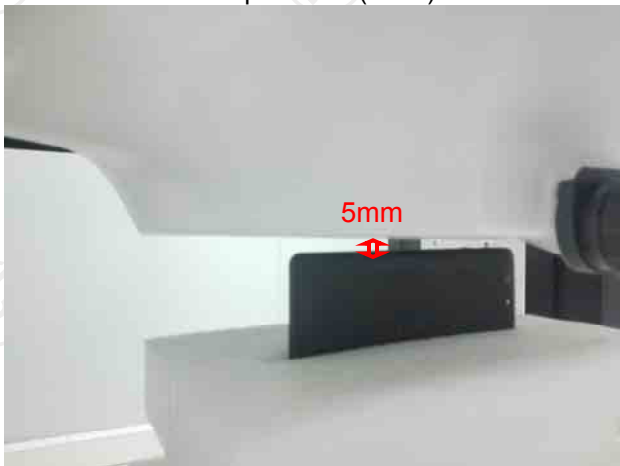
Body worn – Back(5 mm)



Hotspot Front (5mm)



Hotspot Back (5mm)



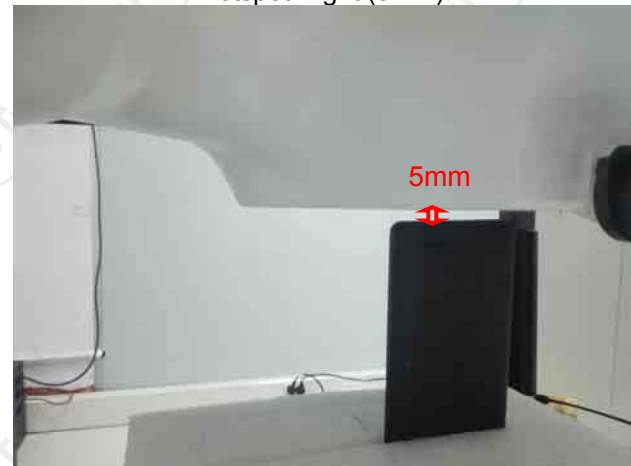
Hotspot Left (10mm)



Hotspot Right (5mm)

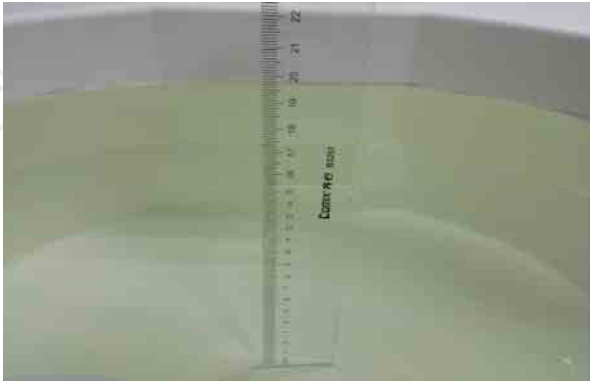


Hotspot Top (5mm)



Hotspot Bottom (5mm)

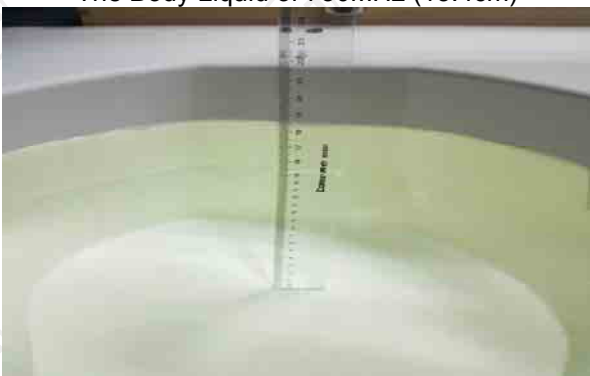
### Liquid depth



The Body Liquid of 750MHz (15.4cm)



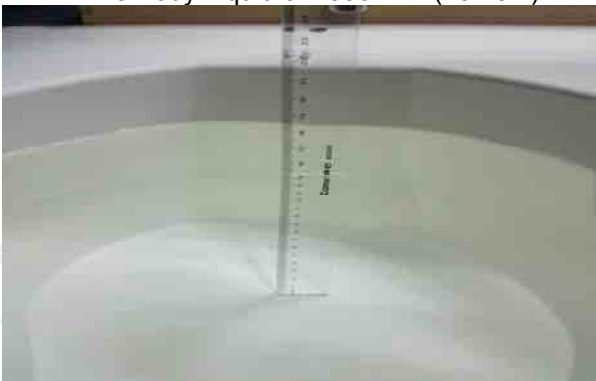
The Body Liquid of 835MHz (15.9 cm)



The Body Liquid of 1800MHz (15.2cm)



The Body Liquid of 1900MHz (16.3cm)



The Body Liquid of 2450MHz (15.1cm)



The Head Liquid of 750MHz (15.2cm)



The Head Liquid of 835MHz (15.3cm)



The Head Liquid of 1800MHz (15.2cm)



The Head Liquid of 1900MHz (15.5cm)



The Head Liquid of 2450MHz (15.6cm)