

### 11. SAR Test Data

GSM850

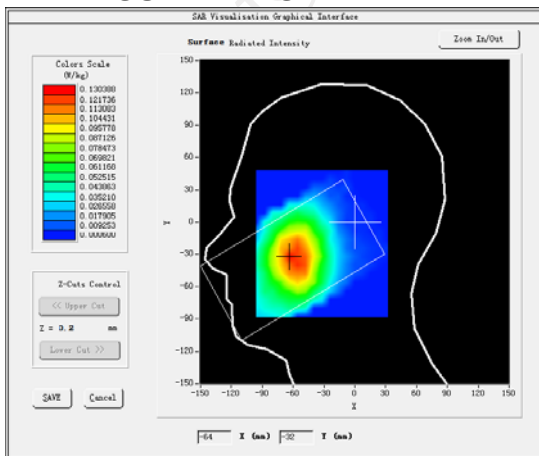
**MEASUREMENT 1**

High Band SAR (Channel 251):

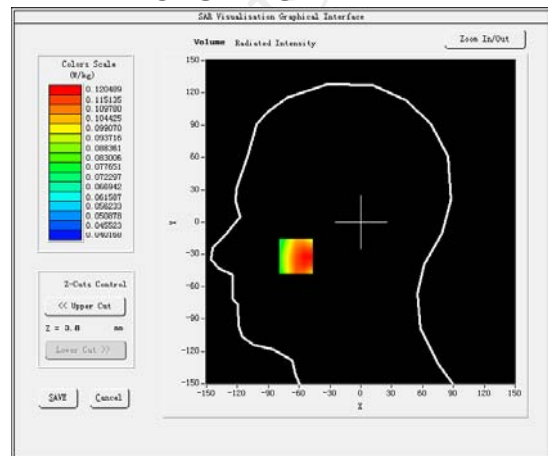
Date: 02/09/2016

Frequency (MHz)	848.800000
Relative permittivity (real part)	40.392154
Relative permittivity (imaginary part)	18.129852
Conductivity (S/m)	0.881254
Variation (%)	3.320000
Crest Factor:	8.3
Probe Conversion factor	5.05
E-Field Probe:	SSE5 (SN 07/15 EP248)
Area Scan	<u>dx=8mm dy=8mm, h= 5.00 mm</u>
ZoomScan	<u>5x5x7, dx=8mm dy=8mm</u> <u>dz=5mm, Complete/ndx=8mm dy=8mm, h=</u> <u>5.00 mm</u>
Phantom	<u>Right head</u>
Device Position	<u>Cheek</u>
Band	<u>GSM850(voice)</u>

**SURFACE SAR**



**VOLUME SAR**



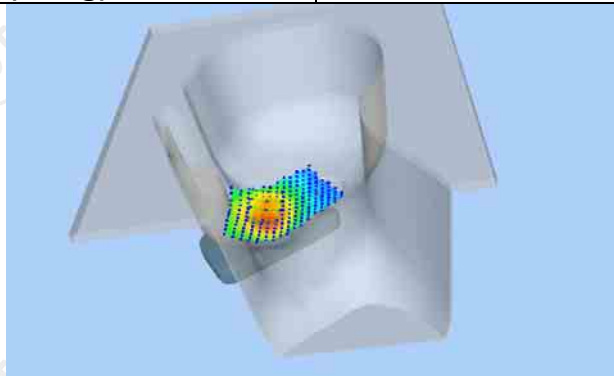
**Maximum location: X=-63.00, Y=-32.00 SAR Peak: 0.13 W/kg**

**SAR 10g (W/Kg)**

0.105940

**SAR 1g (W/Kg)**

0.119954



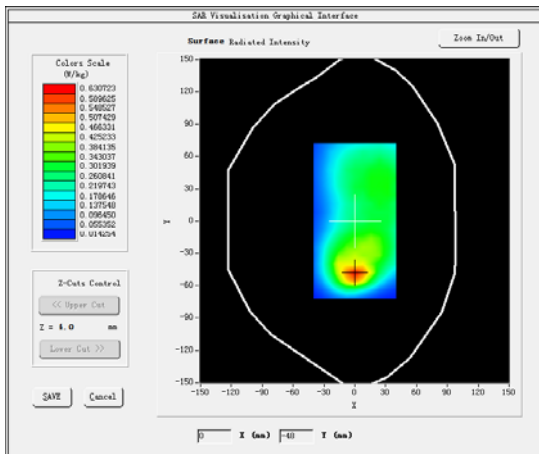
**MEASUREMENT 2**

High Band SAR (Channel 251):

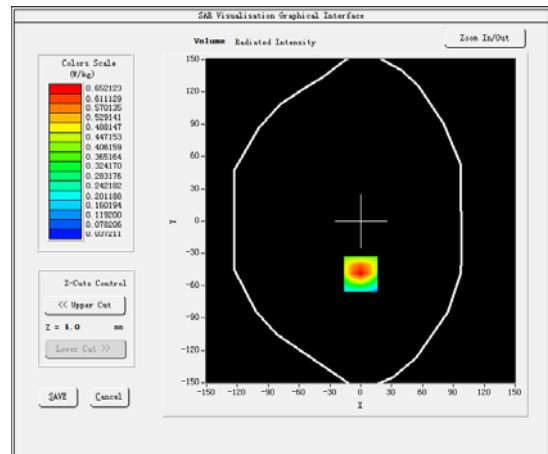
Date: 02/09/2016

<b>Frequency (MHz)</b>	848.800000
<b>Relative permittivity (real part)</b>	55.212077
<b>Relative permittivity (imaginary part)</b>	21.378187
<b>Conductivity (S/m)</b>	0.971188
<b>Variation (%)</b>	0.570000
<b>Crest Factor:</b>	8.3
<b>Probe Conversion factor</b>	5.22
<b>E-Field Probe:</b>	SSE5 (SN 07/15 EP248)
<b>Area Scan</b>	<u>dx=8mm dy=8mm, h= 5.00 mm</u>
<b>ZoomScan</b>	<u>5x5x7, dx=8mm dy=8mm</u> <u>dz=5mm, Complete/ndx=8mm dy=8mm, h=</u> <u>5.00 mm</u>
<b>Phantom</b>	<u>Validation plane</u>
<b>Device Position</b>	<u>Body back</u>
<b>Band</b>	<u>GSM850(Voice)</u>

**SURFACE SAR**



**VOLUME SAR**



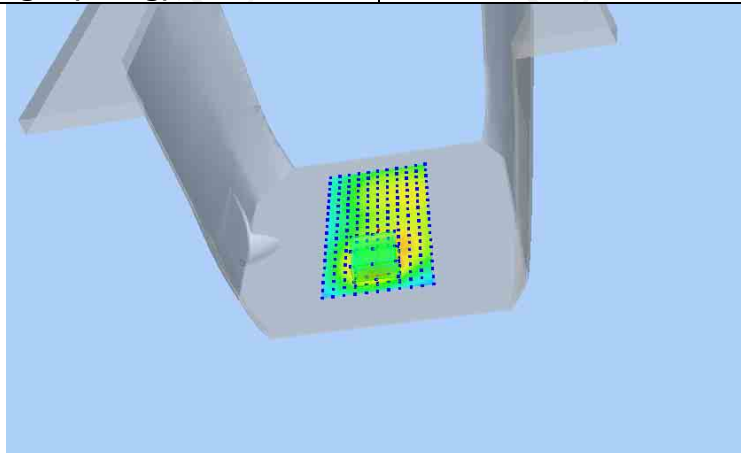
**Maximum location: X=0.00, Y=-49.00 SAR Peak: 1.02 W/kg**

**SAR 10g (W/Kg)**

0.345169

**SAR 1g (W/Kg)**

0.616570



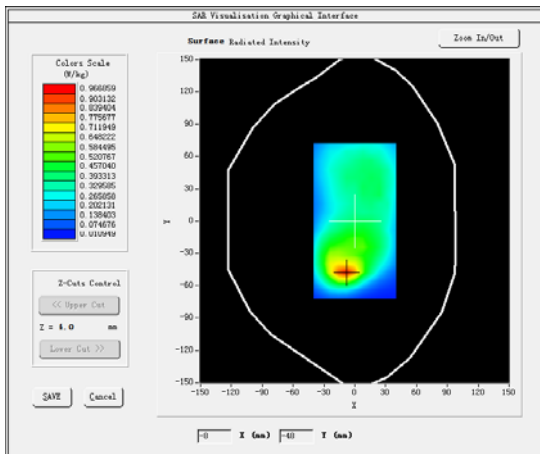
**MEASUREMENT 3**

Lower Band SAR (Channel 128):

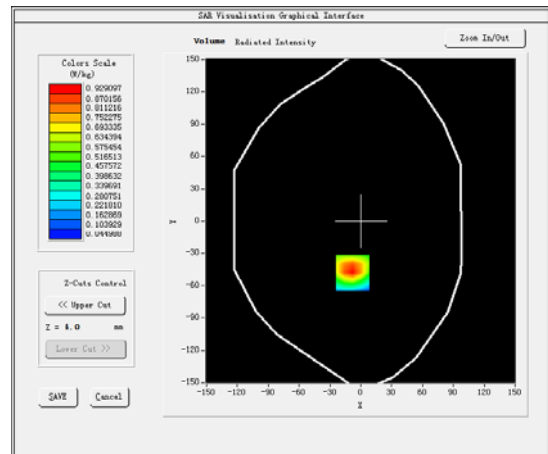
Date: 02/09/2016

<b>Frequency (MHz)</b>	824.200000
<b>Relative permittivity (real part)</b>	55.262145
<b>Relative permittivity (imaginary part)</b>	21.378187
<b>Conductivity (S/m)</b>	0.934587
<b>Variation (%)</b>	-1.580000
<b>Crest Factor:</b>	2.0
<b>Probe Conversion factor</b>	5.22
<b>E-Field Probe:</b>	SSE5 (SN 07/15 EP248)
<b>Area Scan</b>	<u>dx=8mm dy=8mm, h= 5.00 mm</u>
<b>ZoomScan</b>	<u>5x5x7, dx=8mm dy=8mm</u> <u>dz=5mm, Complete/ndx=8mm dy=8mm, h=</u> <u>5.00 mm</u>
<b>Phantom</b>	<u>Validation plane</u>
<b>Device Position</b>	<u>Body back</u>
<b>Band</b>	<u>GSM850(GPRS 4slot hotspot)</u>

**SURFACE SAR**



**VOLUME SAR**



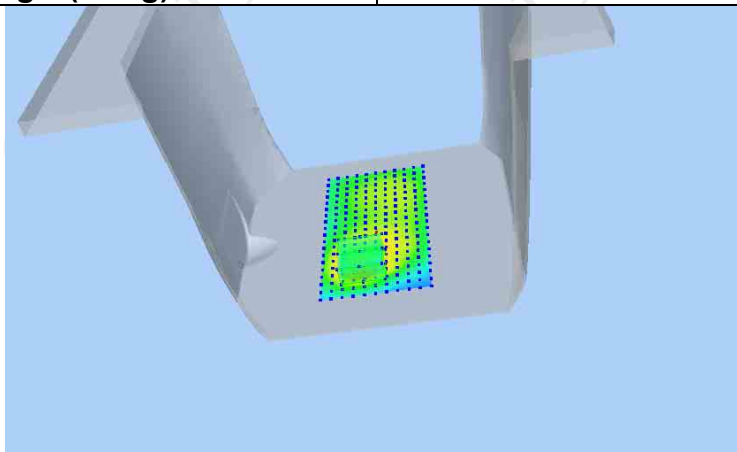
**Maximum location: X=-8.00, Y=-48.00 SAR Peak: 1.51 W/kg**

**SAR 10g (W/Kg)**

0.484396

**SAR 1g (W/Kg)**

0.889118



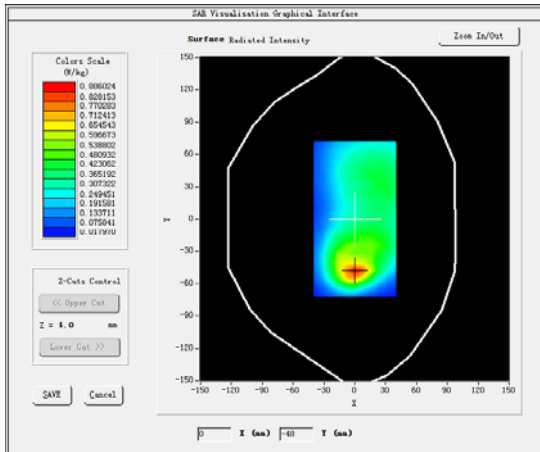
**MEASUREMENT 4**

Middle Band SAR (Channel 190):

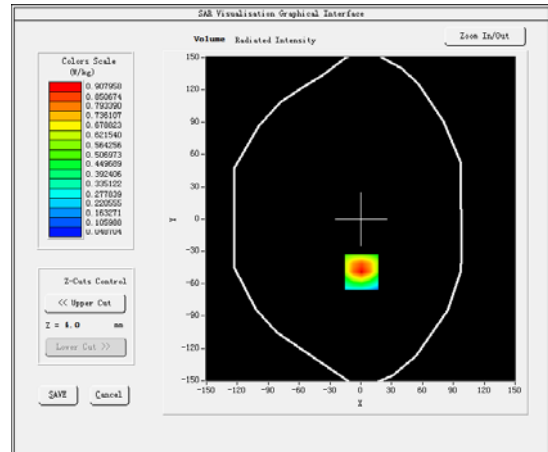
Date: 02/09/2016

<b>Frequency (MHz)</b>	836.600000
<b>Relative permittivity (real part)</b>	55.242077
<b>Relative permittivity (imaginary part)</b>	21.378187
<b>Conductivity (S/m)</b>	0.943587
<b>Variation (%)</b>	1.000000
<b>Crest Factor:</b>	2.0
<b>Probe Conversion factor</b>	5.22
<b>E-Field Probe:</b>	SSE5 (SN 07/15 EP248)
<b>Area Scan</b>	<u>dx=8mm dy=8mm, h= 5.00 mm</u>
<b>ZoomScan</b>	<u>5x5x7, dx=8mm dy=8mm</u> <u>dz=5mm, Complete/ndx=8mm dy=8mm, h=</u> <u>5.00 mm</u>
<b>Phantom</b>	<u>Validation plane</u>
<b>Device Position</b>	<u>Body back</u>
<b>Band</b>	<u>GSM850(GPRS 4slot hotspot)</u>

**SURFACE SAR**



**VOLUME SAR**



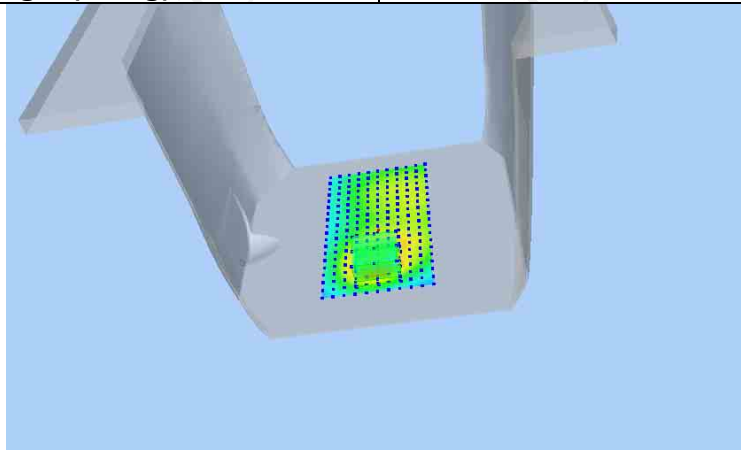
**Maximum location: X=1.00, Y=-49.00 SAR Peak: 1.47 W/kg**

**SAR 10g (W/Kg)**

0.470838

**SAR 1g (W/Kg)**

0.863918



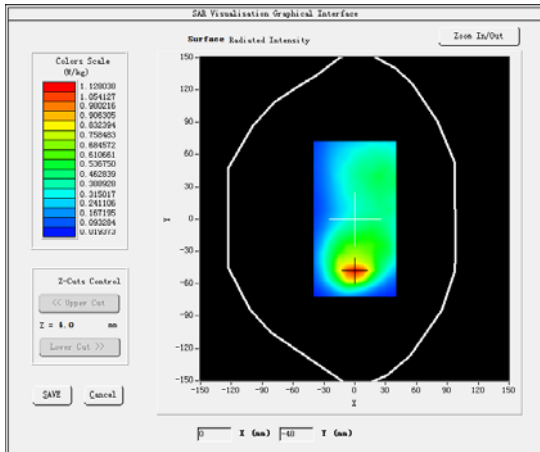
**MEASUREMENT 5**

Higher Band SAR (Channel251):

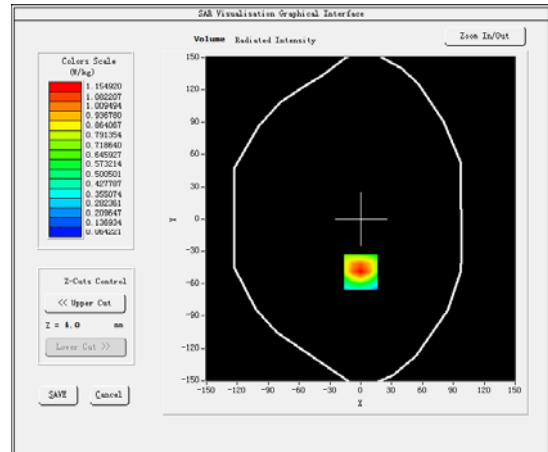
Date: 02/09/2016

<b>Frequency (MHz)</b>	848.800000
<b>Relative permittivity (real part)</b>	55.212077
<b>Relative permittivity (imaginary part)</b>	21.378187
<b>Conductivity (S/m)</b>	0.971188
<b>Variation (%)</b>	2.990000
<b>Crest Factor:</b>	2.0
<b>Probe Conversion factor</b>	5.22
<b>E-Field Probe:</b>	SSE5 (SN 07/15 EP248)
<b>Area Scan</b>	<u>dx=8mm dy=8mm, h= 5.00 mm</u>
<b>ZoomScan</b>	<u>5x5x7, dx=8mm dy=8mm</u> <u>dz=5mm, Complete/ndx=8mm dy=8mm, h=</u> <u>5.00 mm</u>
<b>Phantom</b>	<u>Validation plane</u>
<b>Device Position</b>	<u>Body back</u>
<b>Band</b>	<u>GSM850(GPRS 4slot hotspot)</u>

**SURFACE SAR**



**VOLUME SAR**



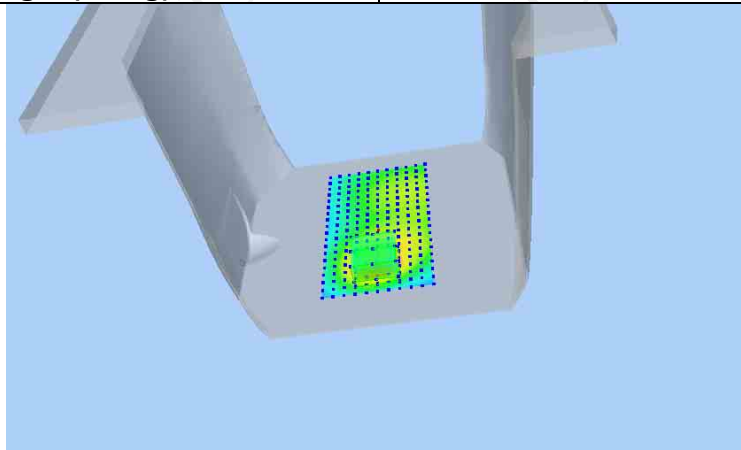
**Maximum location: X=0.00, Y=-49.00 SAR Peak: 1.81 W/kg**

**SAR 10g (W/Kg)**

0.508559

**SAR 1g (W/Kg)**

0.914081



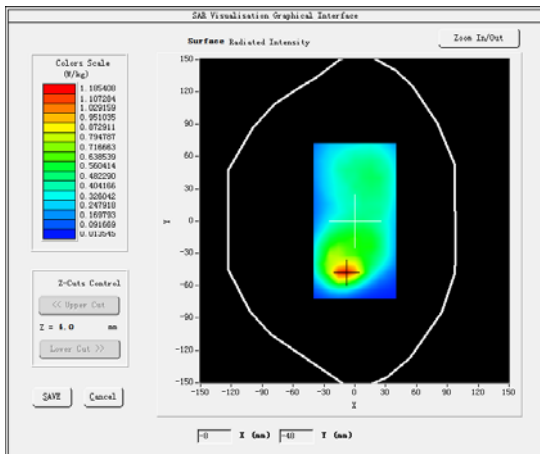
**MEASUREMENT 6**

High Band SAR (Channel251):

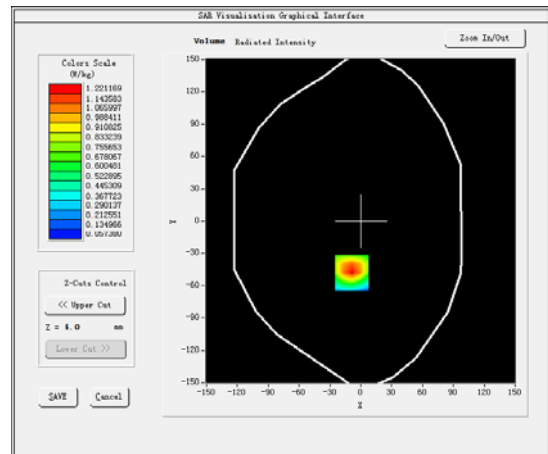
Date: 02/09/2016

<b>Frequency (MHz)</b>	848.800000
<b>Relative permittivity (real part)</b>	55.212077
<b>Relative permittivity (imaginary part)</b>	21.378187
<b>Conductivity (S/m)</b>	0.971188
<b>Variation (%)</b>	-2.130000
<b>Crest Factor:</b>	2.0
<b>Probe Conversion factor</b>	5.22
<b>E-Field Probe:</b>	SSE5 (SN 07/15 EP248)
<b>Area Scan</b>	<u>dx=8mm dy=8mm, h= 5.00 mm</u>
<b>ZoomScan</b>	<u>5x5x7, dx=8mm dy=8mm</u> <u>dz=5mm, Complete/ndx=8mm dy=8mm, h=</u> <u>5.00 mm</u>
<b>Phantom</b>	<u>Validation plane</u>
<b>Device Position</b>	<u>Body back</u>
<b>Band</b>	<u>GSM850(GPRS 4slot hotspot)</u>

**SURFACE SAR**



**VOLUME SAR**



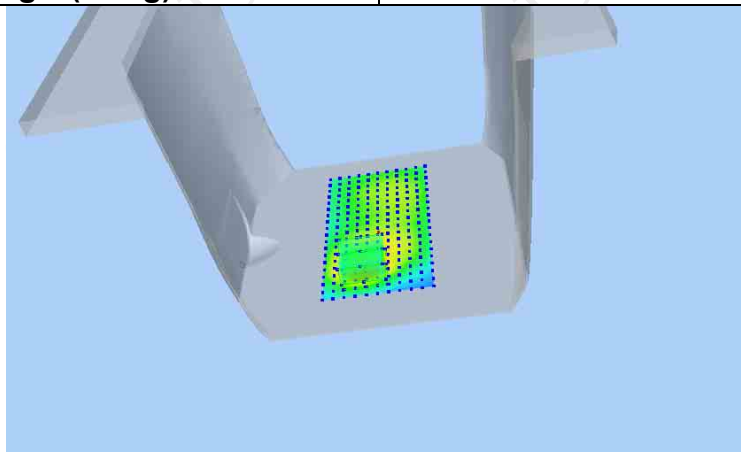
**Maximum location: X=-9.00, Y=-48.00 SAR Peak: 1.78 W/kg**

**SAR 10g (W/Kg)**

0.525515

**SAR 1g (W/Kg)**

0.923995



PCS1900

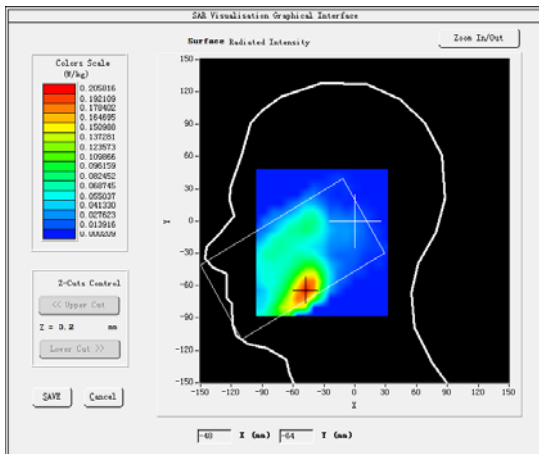
**MEASUREMENT 1**

Higher Band SAR (Channel 810):

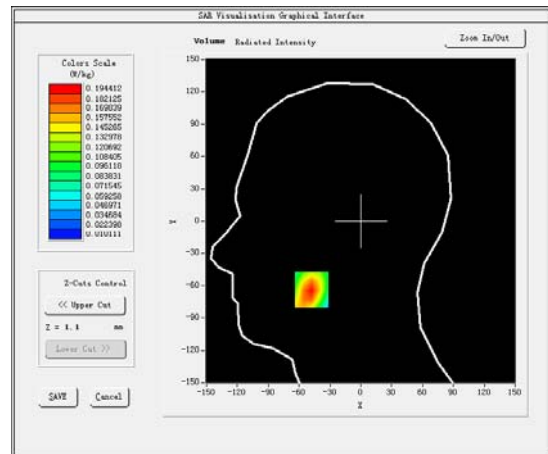
Date: 06/09/2016

<b>Frequency (MHz)</b>	1909.800049
<b>Relative permittivity (real part)</b>	38.870125
<b>Relative permittivity (imaginary part)</b>	12.607061
<b>Conductivity (S/m)</b>	1.392547
<b>Variation (%)</b>	-2.140000
<b>Crest Factor</b>	8.3
<b>Probe Conversion factor</b>	4.86
<b>E-Field Probe:</b>	SSE5 (SN 07/15 EP248)
<b>Area Scan</b>	<u>dx=8mm dy=8mm, h= 5.00 mm</u>
<b>ZoomScan</b>	<u>5x5x7, dx=8mm dy=8mm</u> <u>dz=5mm, Complete/ndx=8mm dy=8mm, h=</u> <u>5.00 mm</u>
<b>Phantom</b>	<u>Right head</u>
<b>Device Position</b>	<u>Cheek</u>
<b>Band</b>	<u>PCS1900(voice)</u>

**SURFACE SAR**



**VOLUME SAR**



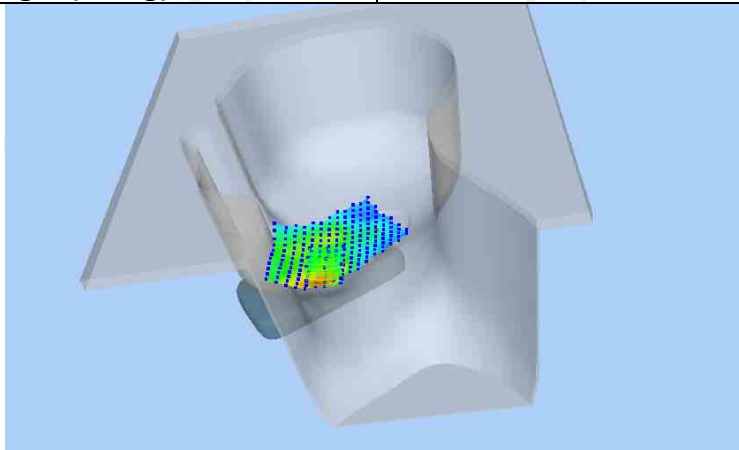
**Maximum location: X=-48.00, Y=-64.00 SAR Peak: 0.25 W/kg**

**SAR 10g (W/Kg)**

0.116782

**SAR 1g (W/Kg)**

0.183516



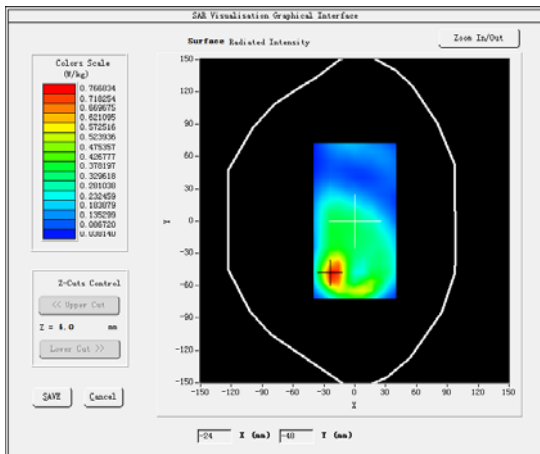
**MEASUREMENT 2**

Higher Band SAR (Channel 810):

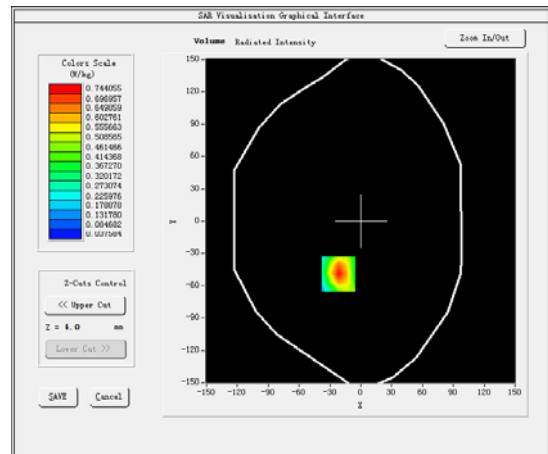
Date: 06/09/2016

<b>Frequency (MHz)</b>	1909.800049
<b>Relative permittivity (real part)</b>	52.094257
<b>Relative permittivity (imaginary part)</b>	14.232400
<b>Conductivity (S/m)</b>	1.541233
<b>Variation (%)</b>	3.060000
<b>Crest Factor</b>	8.3
<b>Probe Conversion factor</b>	5.05
<b>E-Field Probe:</b>	SSE5 (SN 07/15 EP248)
<b>Area Scan</b>	<u>dx=8mm dy=8mm, h= 5.00 mm</u>
<b>ZoomScan</b>	<u>5x5x7, dx=8mm dy=8mm</u> <u>dz=5mm, Complete/ndx=8mm dy=8mm, h=</u> <u>5.00 mm</u>
<b>Phantom</b>	<u>Validation plane</u>
<b>Device Position</b>	<u>Body back</u>
<b>Band</b>	<u>PCS1900(voice)</u>

**SURFACE SAR**



**VOLUME SAR**



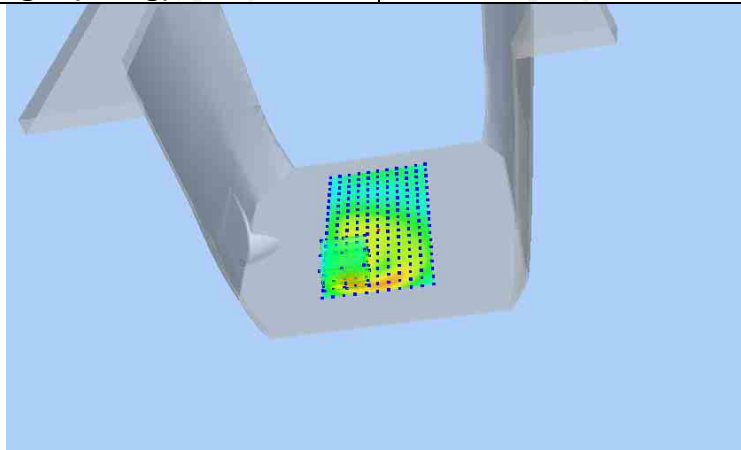
**Maximum location: X=-22.00, Y=-49.00 SAR Peak: 1.13 W/kg**

**SAR 10g (W/Kg)**

0.383174

**SAR 1g (W/Kg)**

0.693489





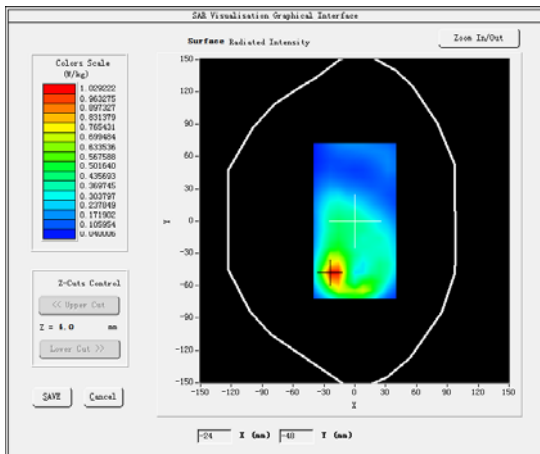
**MEASUREMENT 3**

Lower Band SAR (Channel 512):

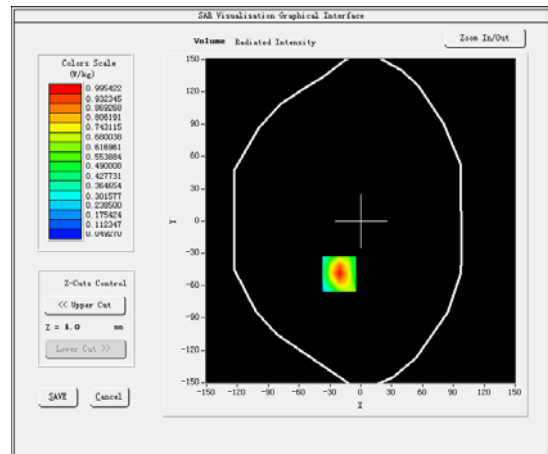
Date: 06/09/2016

<b>Frequency (MHz)</b>	1880.000000
<b>Relative permittivity (real part)</b>	52.143690
<b>Relative permittivity (imaginary part)</b>	14.232400
<b>Conductivity (S/m)</b>	1.500124
<b>Variation (%)</b>	-2.510000
<b>Crest Factor</b>	2.0
<b>Probe Conversion factor</b>	5.05
<b>E-Field Probe:</b>	SSE5 (SN 07/15 EP248)
<b>Area Scan</b>	<u>dx=8mm dy=8mm, h= 5.00 mm</u>
<b>ZoomScan</b>	<u>5x5x7, dx=8mm dy=8mm</u> <u>dz=5mm, Complete/ndx=8mm dy=8mm, h=</u> <u>5.00 mm</u>
<b>Phantom</b>	<u>Validation plane</u>
<b>Device Position</b>	<u>Body back</u>
<b>Band</b>	<u>PCS1900(GPRS 4slot hotspot)</u>

**SURFACE SAR**



**VOLUME SAR**



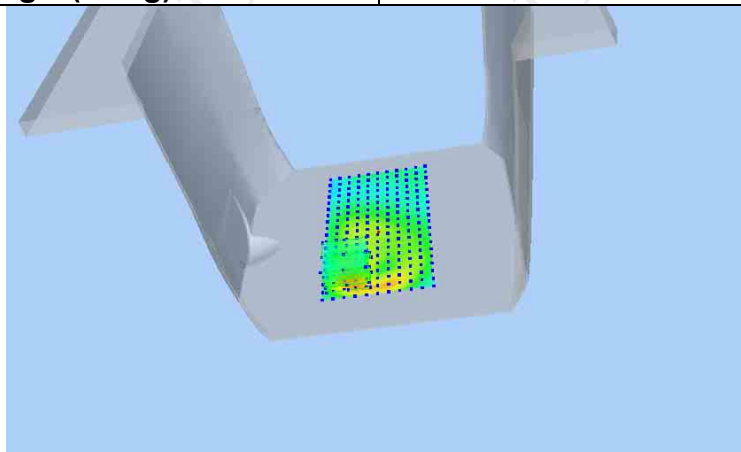
**Maximum location: X=-21.00, Y=-49.00 SAR Peak: 1.50 W/kg**

**SAR 10g (W/Kg)**

0.503382

**SAR 1g (W/Kg)**

0.922169



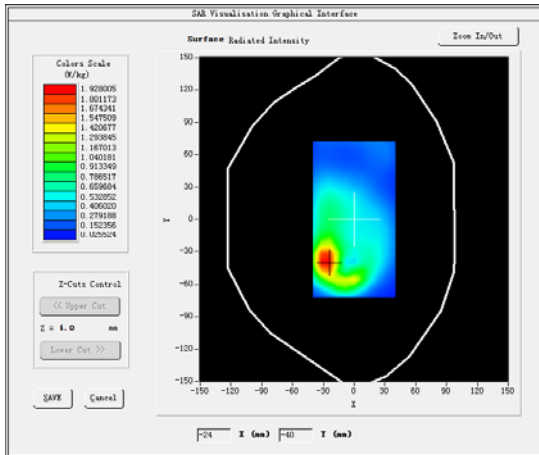
**MEASUREMENT 4**

Middle Band SAR (Channel 661):

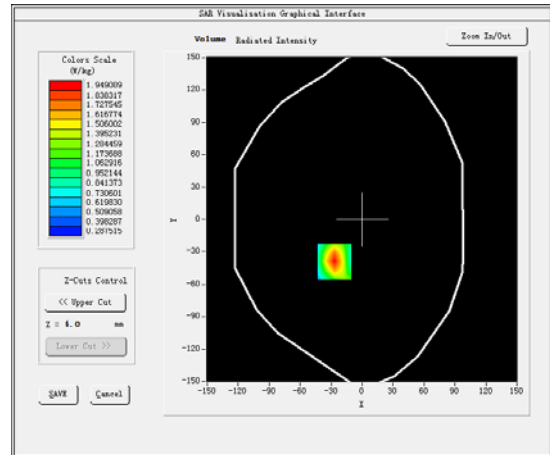
Date: 06/09/2016

<b>Frequency (MHz)</b>	1880.000000
<b>Relative permittivity (real part)</b>	52.122360
<b>Relative permittivity (imaginary part)</b>	14.232400
<b>Conductivity (S/m)</b>	1.514788
<b>Variation (%)</b>	-2.510000
<b>Crest Factor</b>	2.0
<b>Probe Conversion factor</b>	5.05
<b>E-Field Probe:</b>	SSE5 (SN 07/15 EP248)
<b>Area Scan</b>	<u>dx=8mm dy=8mm, h= 5.00 mm</u>
<b>ZoomScan</b>	<u>5x5x7, dx=8mm dy=8mm</u> <u>dz=5mm, Complete/ndx=8mm dy=8mm, h=</u> <u>5.00 mm</u>
<b>Phantom</b>	<u>Validation plane</u>
<b>Device Position</b>	<u>Body back</u>
<b>Band</b>	<u>PCS1900(GPRS 4slot hotspot)</u>

**SURFACE SAR**



**VOLUME SAR**



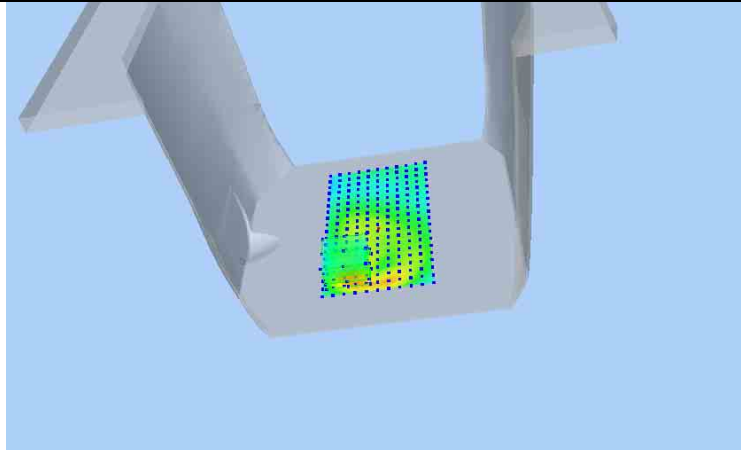
**Maximum location: X=-27.00, Y=-39.00 SAR Peak: 3.85 W/kg**

**SAR 10g (W/Kg)**

0.492547

**SAR 1g (W/Kg)**

0.932365



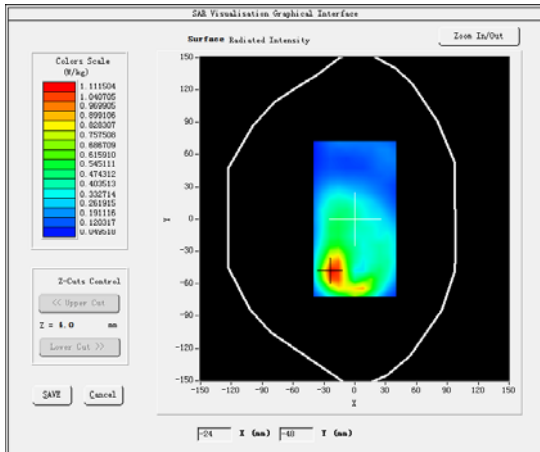
**MEASUREMENT 5**

Higher Band SAR (Channel 810):

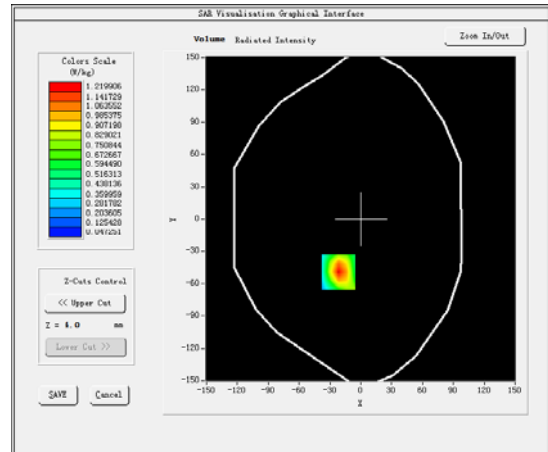
Date: 06/09/2016

<b>Frequency (MHz)</b>	1909.800049
<b>Relative permittivity (real part)</b>	52.094257
<b>Relative permittivity (imaginary part)</b>	14.232400
<b>Conductivity (S/m)</b>	1.541233
<b>Variation (%)</b>	-2.750000
<b>Crest Factor</b>	2.0
<b>Probe Conversion factor</b>	5.05
<b>E-Field Probe:</b>	SSE5 (SN 07/15 EP248)
<b>Area Scan</b>	<u>dx=8mm dy=8mm, h= 5.00 mm</u>
<b>ZoomScan</b>	<u>5x5x7, dx=8mm dy=8mm</u> <u>dz=5mm, Complete/ndx=8mm dy=8mm, h=</u> <u>5.00 mm</u>
<b>Phantom</b>	<u>Validation plane</u>
<b>Device Position</b>	<u>Body back</u>
<b>Band</b>	<u>PCS1900(GPRS 4slot hotspot)</u>

**SURFACE SAR**



**VOLUME SAR**



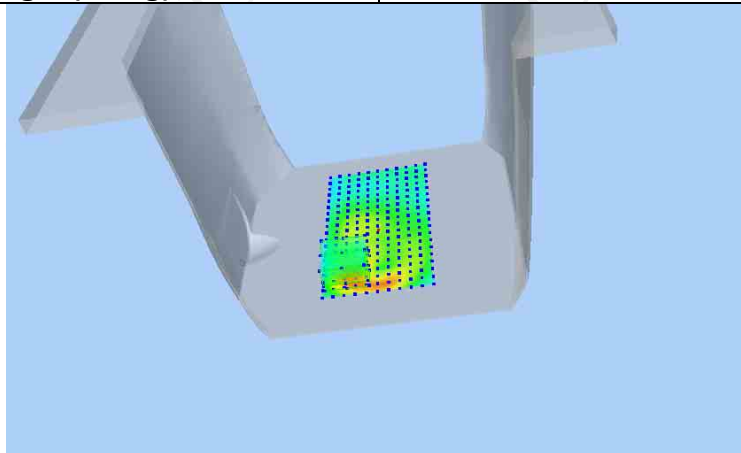
**Maximum location: X=-22.00, Y=-49.00 SAR Peak: 2.00 W/kg**

**SAR 10g (W/Kg)**

0.590107

**SAR 1g (W/Kg)**

1.010895



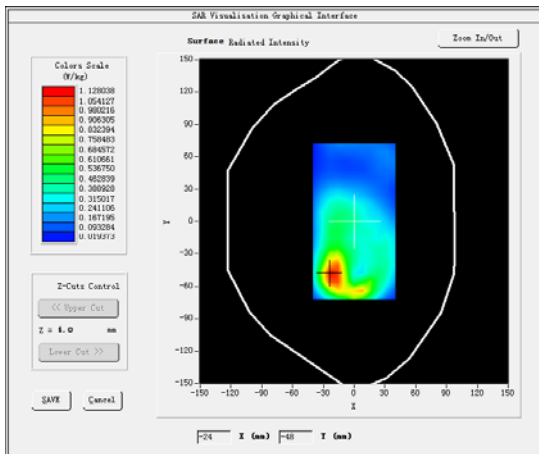
**MEASUREMENT 6**

Higher Band SAR (Channel 810):

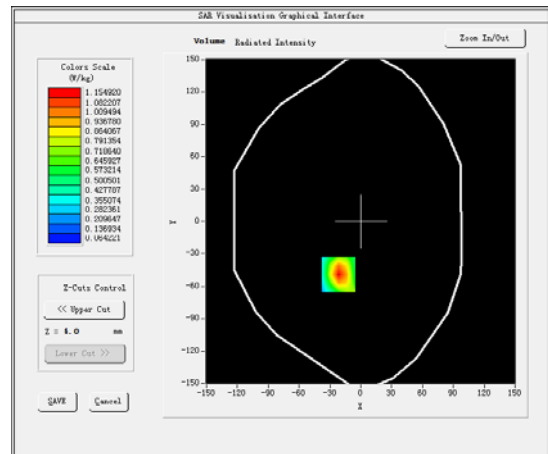
Date: 06/09/2016

<b>Frequency (MHz)</b>	1909.800049
<b>Relative permittivity (real part)</b>	52.094257
<b>Relative permittivity (imaginary part)</b>	14.232400
<b>Conductivity (S/m)</b>	1.541233
<b>Variation (%)</b>	3.150000
<b>Crest Factor</b>	2.0
<b>Probe Conversion factor</b>	5.05
<b>E-Field Probe:</b>	SSE5 (SN 07/15 EP248)
<b>Area Scan</b>	<u>dx=8mm dy=8mm, h= 5.00 mm</u>
<b>ZoomScan</b>	<u>5x5x7, dx=8mm dy=8mm</u> <u>dz=5mm, Complete/ndx=8mm dy=8mm, h=</u> <u>5.00 mm</u>
<b>Phantom</b>	<u>Validation plane</u>
<b>Device Position</b>	<u>Body back</u>
<b>Band</b>	<u>PCS1900(GPRS 4slot hotspot)</u>

**SURFACE SAR**



**VOLUME SAR**



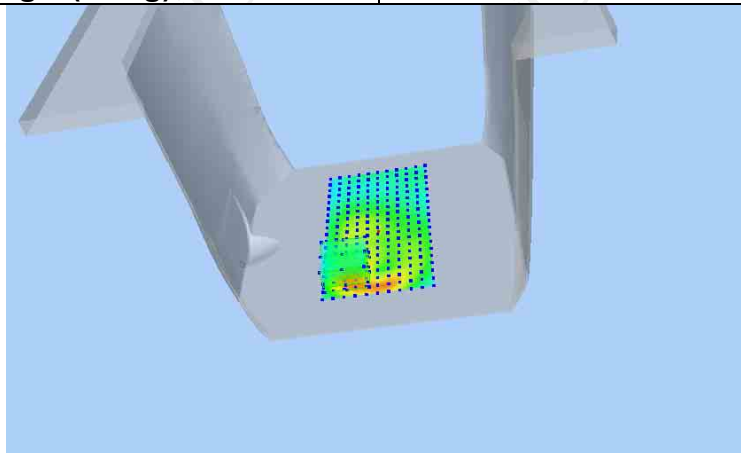
**Maximum location: X=-22.00, Y=-49.00 SAR Peak: 2.00 W/kg**

**SAR 10g (W/Kg)**

0.568741

**SAR 1g (W/Kg)**

1.020154



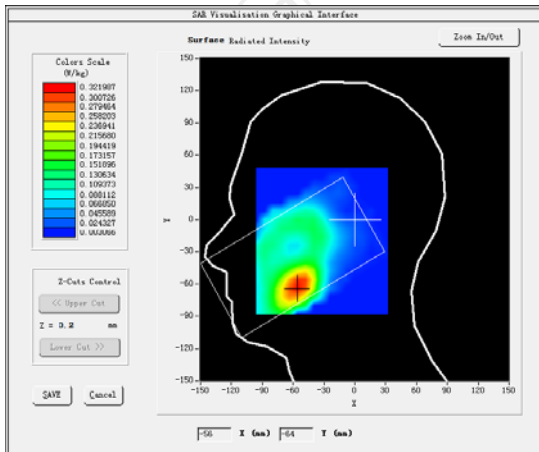
WCDMA Band IV  
**MEASUREMENT 1**

Lower Band SAR (Channel 1412):

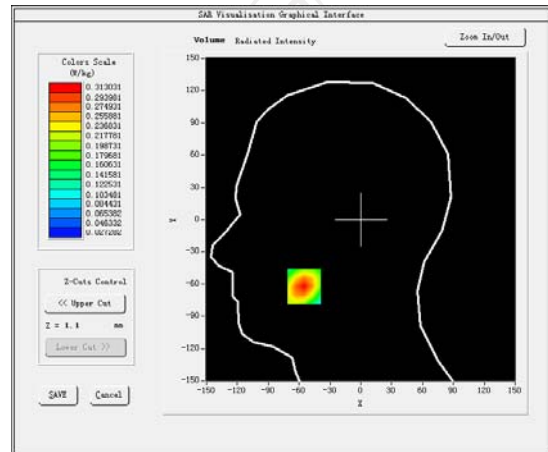
Date: 05/09/2016

<b>Frequency (MHz)</b>	1732.000000
<b>Relative permittivity (real part)</b>	39.104959
<b>Relative permittivity (imaginary part)</b>	13.809060
<b>Conductivity (S/m)</b>	1.348738
<b>Variation (%)</b>	-2.250000
<b>Crest Factor</b>	1.0
<b>Probe Conversion factor</b>	4.86
<b>E-Field Probe:</b>	SSE5 (SN 07/15 EP248)
<b>Area Scan</b>	<u>dx=8mm dy=8mm, h= 5.00 mm</u>
<b>ZoomScan</b>	<u>5x5x7, dx=8mm dy=8mm</u> <u>dz=5mm, Complete/ndx=8mm dy=8mm, h=</u> <u>5.00 mm</u>
<b>Phantom</b>	<u>Right head</u>
<b>Device Position</b>	<u>Cheek</u>
<b>Band</b>	<u>BAND1_WCDMA1700</u>

**SURFACE SAR**



**VOLUME SAR**



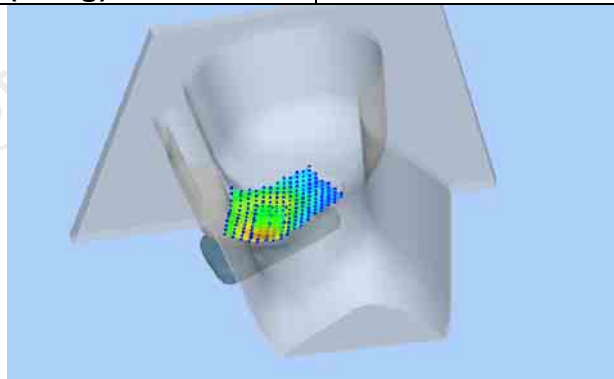
**Maximum location: X=-55.00, Y=-62.00 SAR Peak: 0.41 W/kg**

**SAR 10g (W/Kg)**

0.187715

**SAR 1g (W/Kg)**

0.294950



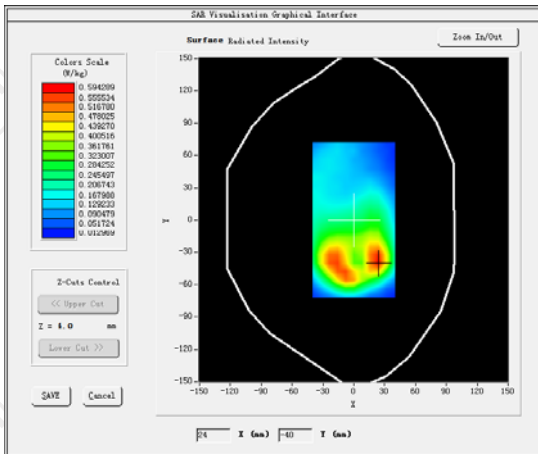
**MEASUREMENT 2**

Lower Band SAR (Channel 1412):

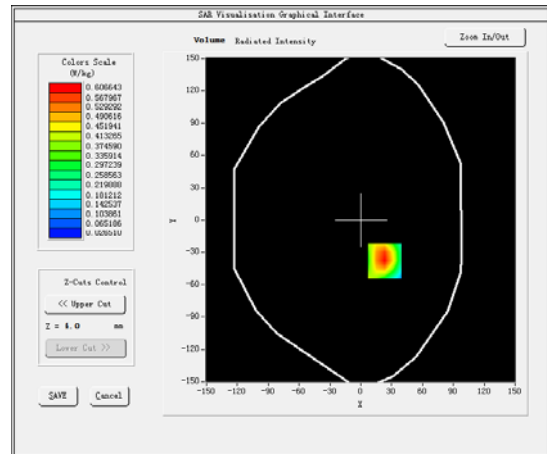
Date: 05/09/2016

<b>Frequency (MHz)</b>	1732.000000
<b>Relative permittivity (real part)</b>	53.322660
<b>Relative permittivity (imaginary part)</b>	14.700620
<b>Conductivity (S/m)</b>	1.500860
<b>Variation (%)</b>	-1.880000
<b>Crest Factor</b>	1.0
<b>Probe Conversion factor</b>	5.05
<b>E-Field Probe:</b>	SSE5 (SN 07/15 EP248)
<b>Area Scan</b>	<u>dx=8mm dy=8mm, h= 5.00 mm</u>
<b>ZoomScan</b>	<u>5x5x7, dx=8mm dy=8mm</u> <u>dz=5mm, Complete/ndx=8mm dy=8mm, h=</u> <u>5.00 mm</u>
<b>Phantom</b>	<u>Validation plane</u>
<b>Device Position</b>	<u>Body back</u>
<b>Band</b>	<u>BAND1 WCDMA1700</u>

**SURFACE SAR**



**VOLUME SAR**



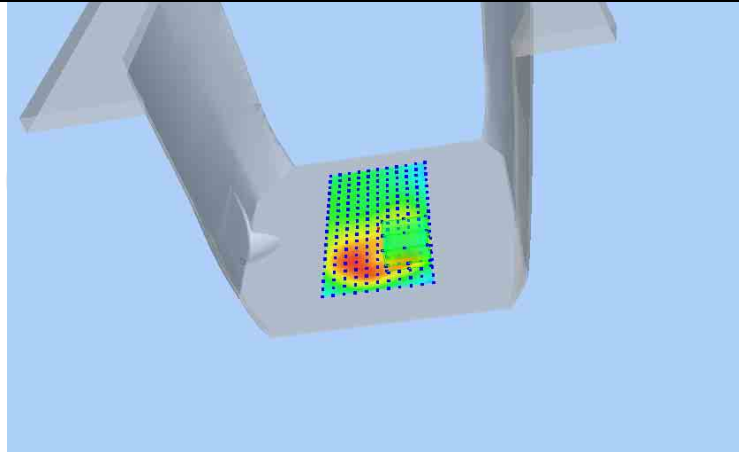
**Maximum location: X=23.00, Y=-38.00 SAR Peak: 0.91 W/kg**

**SAR 10g (W/Kg)**

0.329197

**SAR 1g (W/Kg)**

0.570968



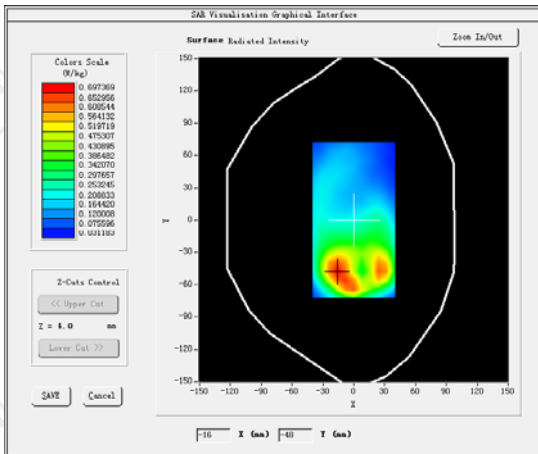
**MEASUREMENT 3**

Lower Band SAR (Channel 1412):

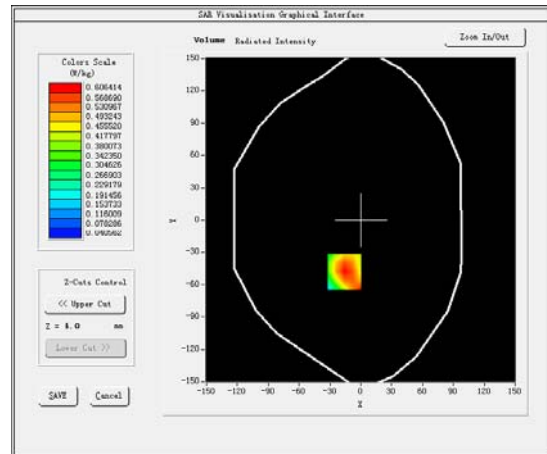
Date: 05/09/2016

<b>Frequency (MHz)</b>	1732.000000
<b>Relative permittivity (real part)</b>	53.322660
<b>Relative permittivity (imaginary part)</b>	14.700620
<b>Conductivity (S/m)</b>	1.500860
<b>Variation (%)</b>	-3.860000
<b>Crest Factor</b>	1.0
<b>Probe Conversion factor</b>	5.05
<b>E-Field Probe:</b>	SSE5 (SN 07/15 EP248)
<b>Area Scan</b>	<u>dx=8mm dy=8mm, h= 5.00 mm</u>
<b>ZoomScan</b>	<u>5x5x7, dx=8mm dy=8mm</u> <u>dz=5mm, Complete/ndx=8mm dy=8mm, h=</u> <u>5.00 mm</u>
<b>Phantom</b>	<u>Validation plane</u>
<b>Device Position</b>	<u>Body front</u>
<b>Band</b>	<u>BAND1 WCDMA1700</u>

**SURFACE SAR**

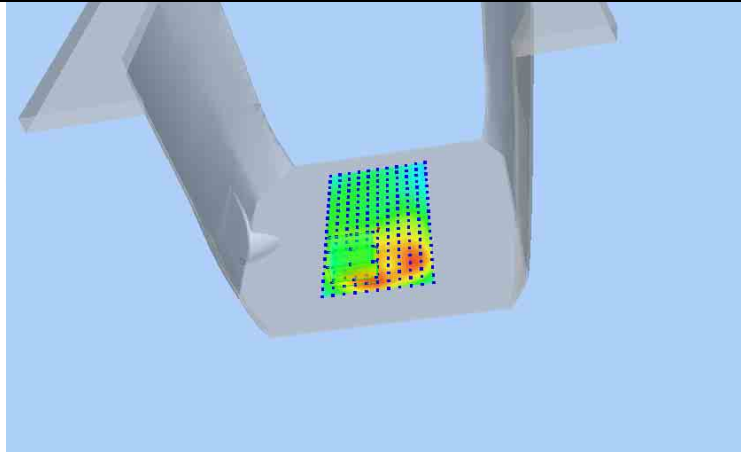


**VOLUME SAR**



**Maximum location: X=-16.00, Y=-48.00 SAR Peak: 0.85 W/kg**

<b>SAR 10g (W/Kg)</b>	0.360389
<b>SAR 1g (W/Kg)</b>	0.524295



WLAN 2.4

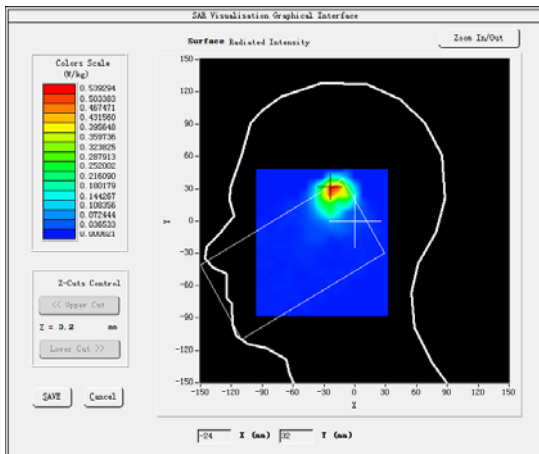
**MEASUREMENT 1**

Lower Band SAR (Channel 1):

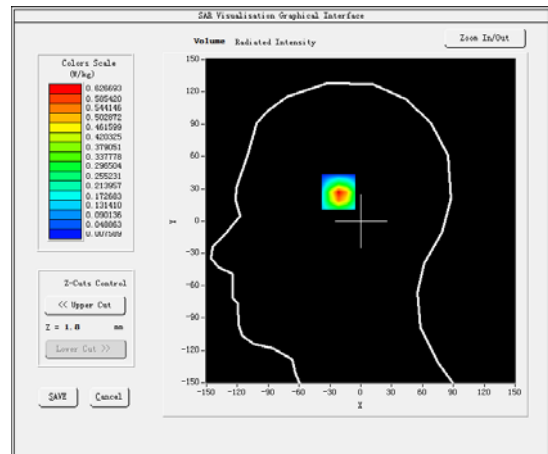
Date: 07/09/2016

<b>Frequency (MHz)</b>	2412.000000
<b>Relative permittivity (real part)</b>	37.841613
<b>Relative permittivity (imaginary part)</b>	13.546980
<b>Conductivity (S/m)</b>	1.794111
<b>Variation (%)</b>	-3.780000
<b>Crest Factor</b>	1.0
<b>Probe Conversion factor</b>	4.21
<b>E-Field Probe:</b>	SSE5 (SN 07/15 EP248)
<b>Area Scan</b>	<u>dx=8mm dy=8mm, h= 5.00 mm</u>
<b>ZoomScan</b>	<u>5x5x7, dx=8mm dy=8mm</u> <u>dz=5mm, Complete/ndx=8mm dy=8mm, h=</u> <u>5.00 mm</u>
<b>Phantom</b>	<u>Right head</u>
<b>Device Position</b>	<u>Cheek</u>
<b>Band</b>	<u>IEEE 802.11b ISM</u>

**SURFACE SAR**



**VOLUME SAR**



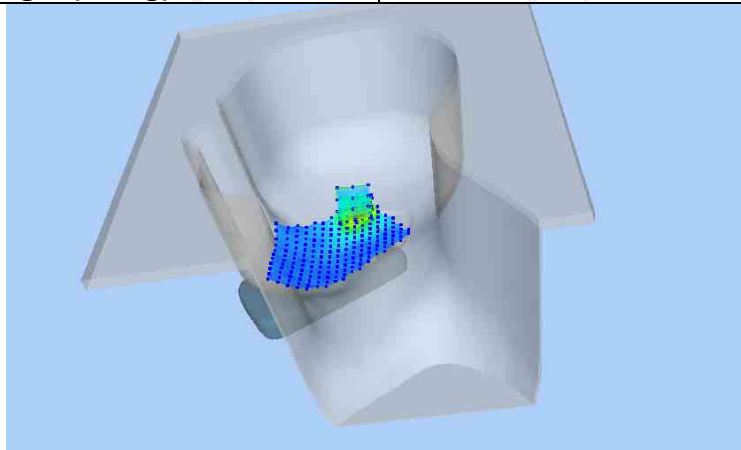
**Maximum location: X=-22.00, Y=30.00 SAR Peak: 1.24 W/kg**

**SAR 10g (W/Kg)**

0.246672

**SAR 1g (W/Kg)**

0.499826





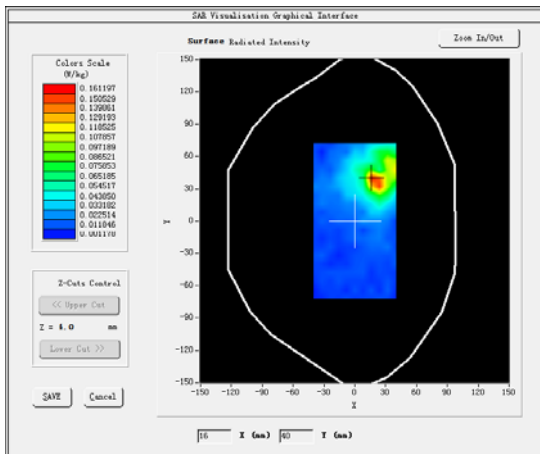
**MEASUREMENT 2**

Lower Band SAR (Channel 1):

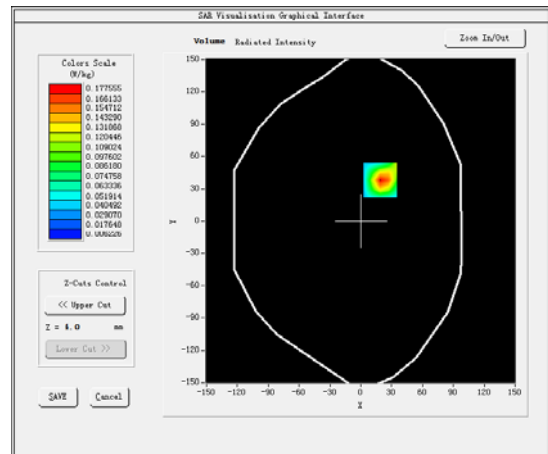
Date: 07/09/2016

<b>Frequency (MHz)</b>	2412.000000
<b>Relative permittivity (real part)</b>	53.650667
<b>Relative permittivity (imaginary part)</b>	14.318444
<b>Conductivity (S/m)</b>	1.972536
<b>Variation (%)</b>	-4.210000
<b>Crest Factor</b>	1.0
<b>Probe Conversion factor</b>	4.36
<b>E-Field Probe:</b>	SSE5 (SN 07/15 EP248)
<b>Area Scan</b>	<u>dx=8mm dy=8mm, h= 5.00 mm</u>
<b>ZoomScan</b>	<u>5x5x7, dx=8mm dy=8mm</u> <u>dz=5mm, Complete/ndx=8mm dy=8mm, h=</u> <u>5.00 mm</u>
<b>Phantom</b>	Validation plane
<b>Device Position</b>	Body back
<b>Band</b>	<u>IEEE 802.11b ISM</u>

**SURFACE SAR**



**VOLUME SAR**



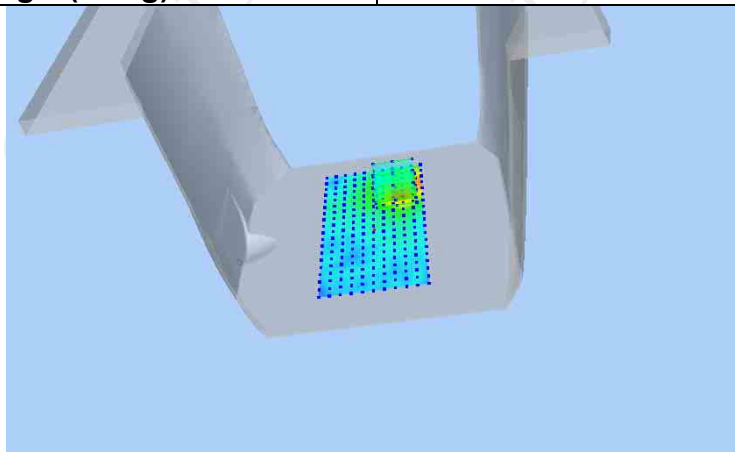
**Maximum location: X=19.00, Y=38.00 SAR Peak: 0.31 W/kg**

**SAR 10g (W/Kg)**

0.080811

**SAR 1g (W/Kg)**

0.170980



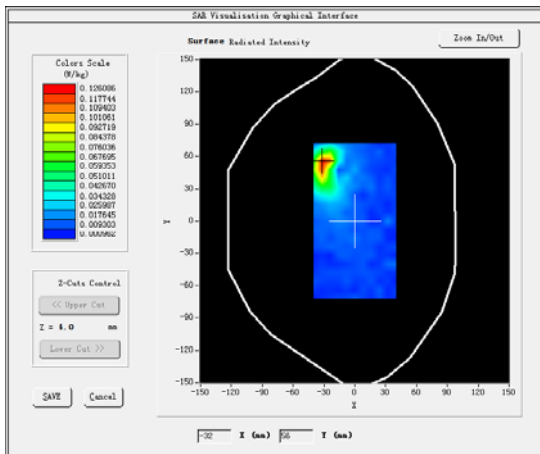
**MEASUREMENT 3**

Lower Band SAR (Channel 1):

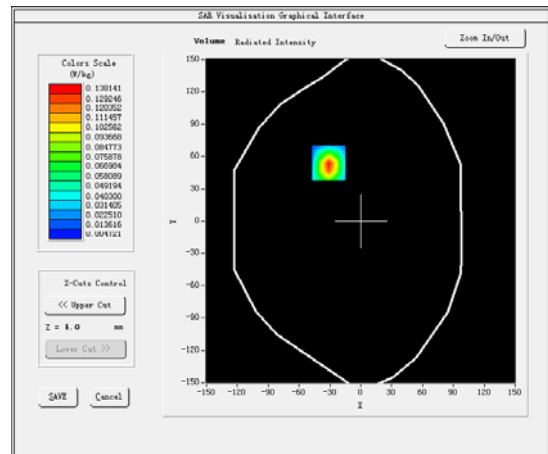
Date: 07/09/2016

<b>Frequency (MHz)</b>	2412.000000
<b>Relative permittivity (real part)</b>	53.650667
<b>Relative permittivity (imaginary part)</b>	14.318444
<b>Conductivity (S/m)</b>	1.972536
<b>Variation (%)</b>	1.780000
<b>Crest Factor</b>	1.0
<b>Probe Conversion factor</b>	4.36
<b>E-Field Probe:</b>	SSE5 (SN 07/15 EP248)
<b>Area Scan</b>	<u>dx=8mm dy=8mm, h= 5.00 mm</u>
<b>ZoomScan</b>	<u>5x5x7, dx=8mm dy=8mm</u> <u>dz=5mm, Complete/ndx=8mm dy=8mm, h=</u> <u>5.00 mm</u>
<b>Phantom</b>	Validation plane
<b>Device Position</b>	Body back
<b>Band</b>	<u>IEEE 802.11b ISM</u>

**SURFACE SAR**



**VOLUME SAR**



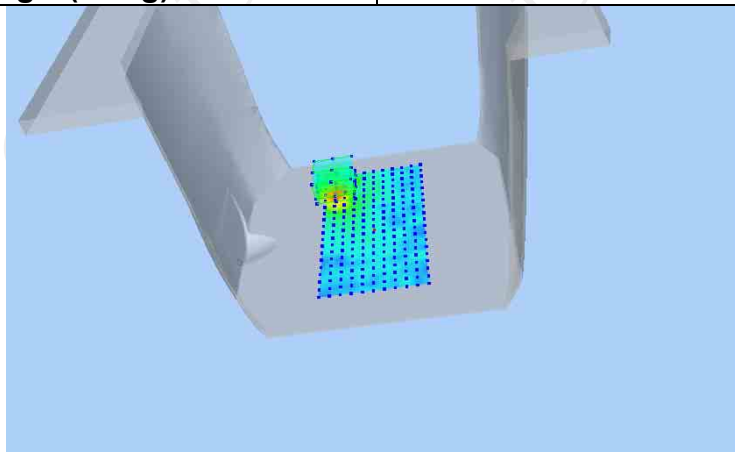
**Maximum location: X=-31.00, Y=54.00 SAR Peak: 0.25 W/kg**

**SAR 10g (W/Kg)**

0.061644

**SAR 1g (W/Kg)**

0.133034



LTE II

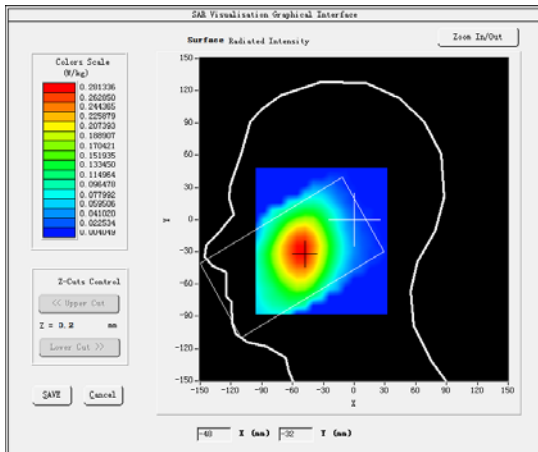
**MEASUREMENT 1**

Lower Band SAR (Channel 18700):

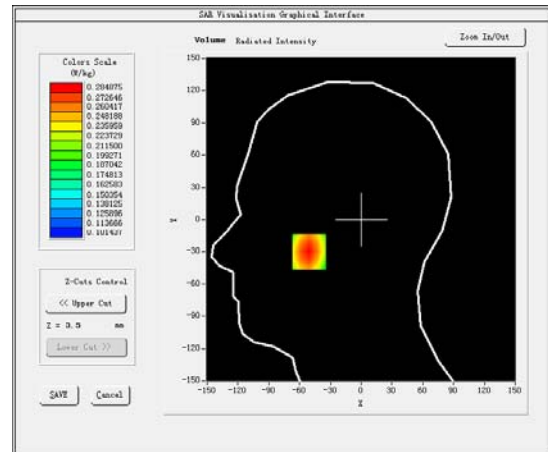
Date: 06/09/2016

Frequency (MHz)	1860.000000
Relative permittivity (real part)	38.910021
Relative permittivity (imaginary part)	13.411700
Conductivity (S/m)	1.352254
Variation (%)	0.530000
Crest Factor	1.0
Probe Conversion factor	4.86
Area Scan	<u>dx=8mm dy=8mm, h= 5.00 mm</u>
ZoomScan	<u>5x5x7,dx=8mm dy=8mm</u> <u>dz=5mm,Complete/ndx=8mm dy=8mm, h=</u> <u>5.00 mm</u>
Phantom	<u>Right head</u>
Device Position	<u>Cheek(QPSK 1RB)</u>
Band	<u>LTE band 2</u>

**SURFACE SAR**



**VOLUME SAR**



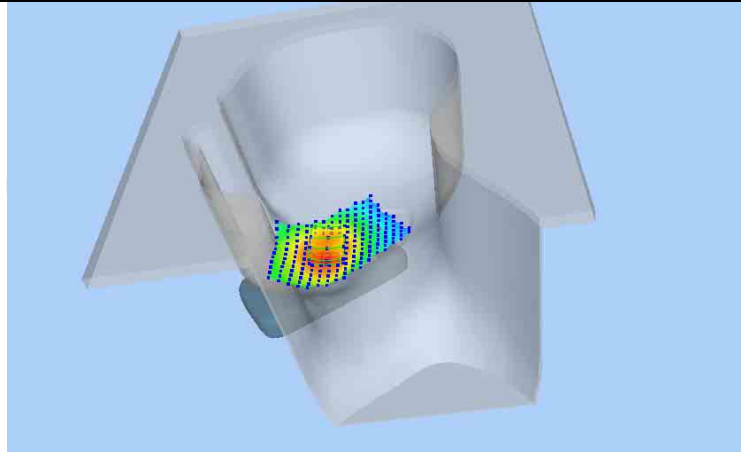
Maximum location: X=-51.00, Y=-30.00 SAR Peak: 0.31 W/kg

SAR 10g (W/Kg)

0.236870

SAR 1g (W/Kg)

0.278353



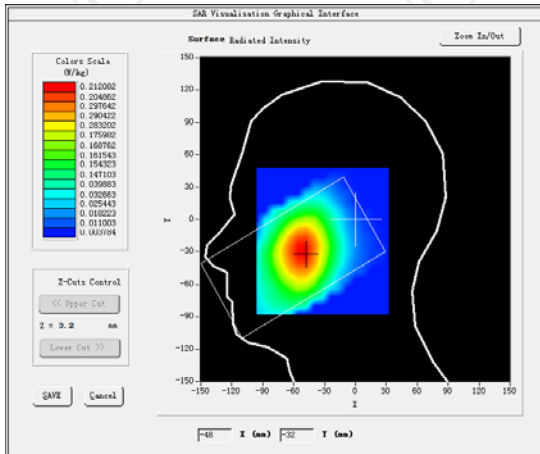
**MEASUREMENT 2**

Lower Band SAR (Channel 18700):

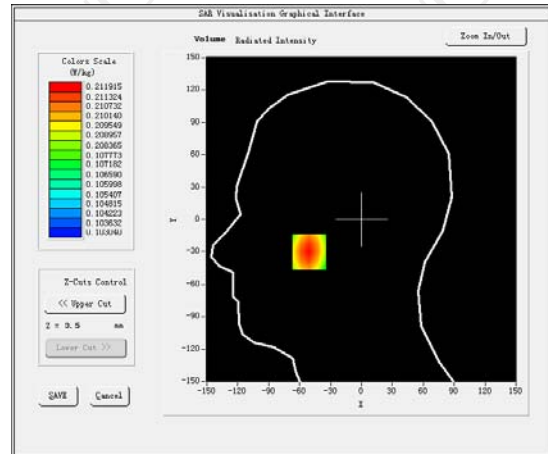
Date: 06/09/2016

<b>Frequency (MHz)</b>	1860.000000
<b>Relative permittivity (real part)</b>	38.910021
<b>Relative permittivity (imaginary part)</b>	13.411700
<b>Conductivity (S/m)</b>	1.352254
<b>Variation (%)</b>	2.140000
<b>Crest Factor</b>	1.0
<b>Probe Conversion factor</b>	5.05
<b>Area Scan</b>	<u>dx=8mm dy=8mm, h= 5.00 mm</u>
<b>ZoomScan</b>	<u>5x5x7, dx=8mm dy=8mm</u> <u>dz=5mm, Complete/ndx=8mm dy=8mm, h=</u> <u>5.00 mm</u>
<b>Phantom</b>	<u>Right head</u>
<b>Device Position</b>	<u>Cheek(QPSK 50%RB)</u>
<b>Band</b>	<u>LTE band 2</u>

**SURFACE SAR**



**VOLUME SAR**



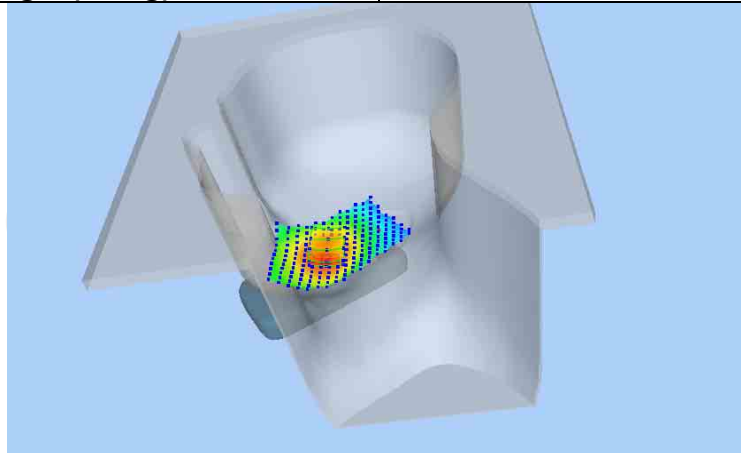
**Maximum location: X=-51.00, Y=-30.00 SAR Peak: 0.28 W/kg**

**SAR 10g (W/Kg)**

0.215478

**SAR 1g (W/Kg)**

0.202587



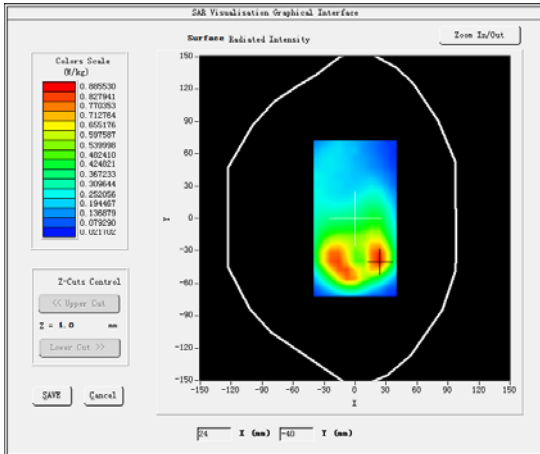
**MEASUREMENT 3**

Lower Band SAR (Channel 18700):

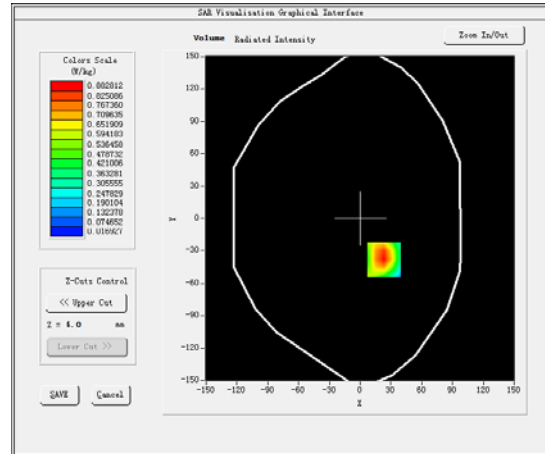
Date: 06/09/2016

Frequency (MHz)	1860.000000
Relative permittivity (real part)	52.142547
Relative permittivity (imaginary part)	13.770436
Conductivity (S/m)	1.501456
Variation (%)	-0.500000
Crest Factor	1.0
Probe Conversion factor	5.05
Area Scan	<u>dx=8mm dy=8mm, h= 5.00 mm</u>
ZoomScan	<u>5x5x7, dx=8mm dy=8mm</u> <u>dz=5mm, Complete/ndx=8mm dy=8mm, h=</u> <u>5.00 mm</u>
Phantom	<u>Validation plane</u>
Device Position	<u>Body back(QPSK 1RB)</u>
Band	<u>LTE band 2</u>

**SURFACE SAR**



**VOLUME SAR**



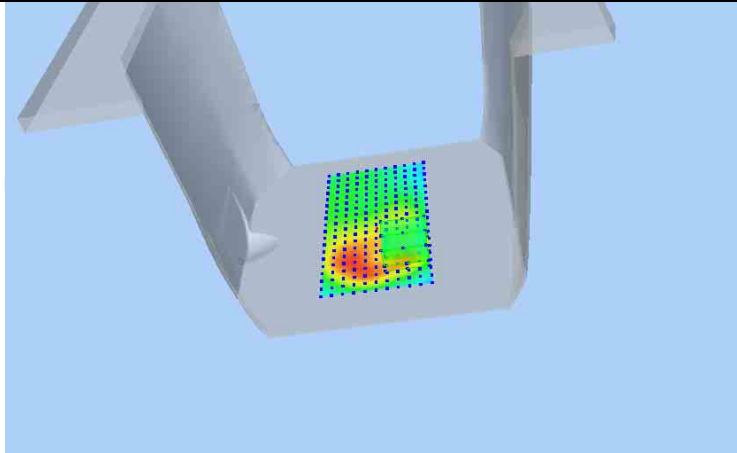
Maximum location: X=23.00, Y=-38.00 SAR Peak: 1.39 W/kg

SAR 10g (W/Kg)

0.327816

SAR 1g (W/Kg)

0.705521



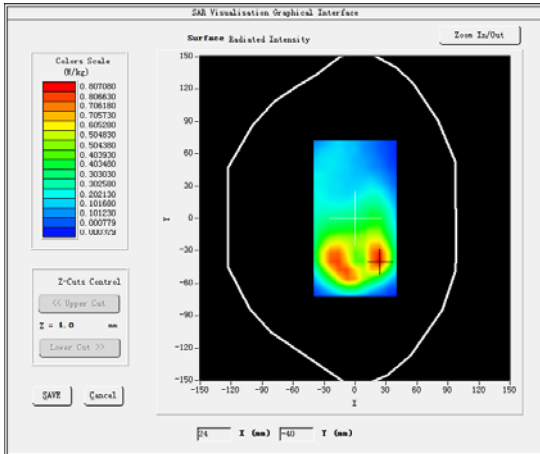
**MEASUREMENT 4**

Lower Band SAR (Channel 18700):

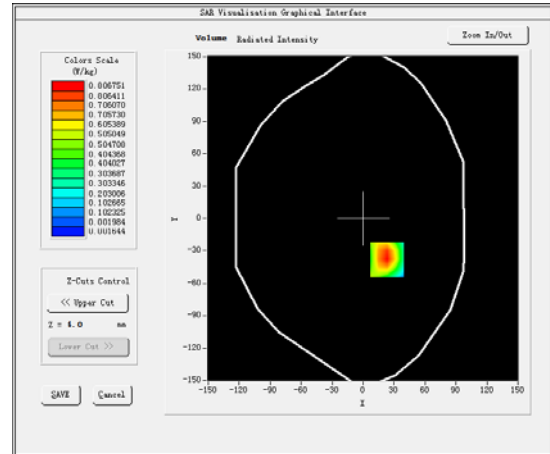
Date: 06/09/2016

Frequency (MHz)	1860.000000
Relative permittivity (real part)	52.142547
Relative permittivity (imaginary part)	13.770436
Conductivity (S/m)	1.501456
Variation (%)	2.330000
Crest Factor	1.0
Probe Conversion factor	5.05
Area Scan	<u>dx=8mm dy=8mm, h= 5.00 mm</u>
ZoomScan	<u>5x5x7,dx=8mm dy=8mm</u> <u>dz=5mm,Complete/ndx=8mm dy=8mm, h=</u> <u>5.00 mm</u>
Phantom	<u>Validation plane</u>
Device Position	<u>Body back Cheek(QPSK 50%RB)</u>
Band	<u>LTE band 2</u>

**SURFACE SAR**

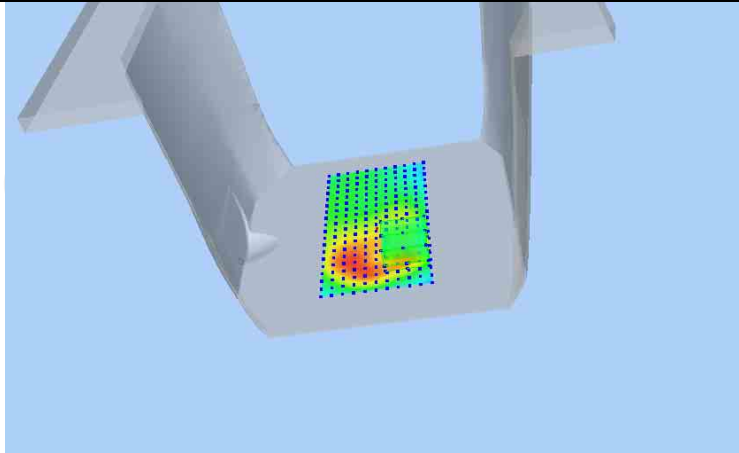


**VOLUME SAR**



**Maximum location: X=23.00, Y=-38.00 SAR Peak: 1.16 W/kg**

SAR 10g (W/Kg)	0.365479
SAR 1g (W/Kg)	0.542546



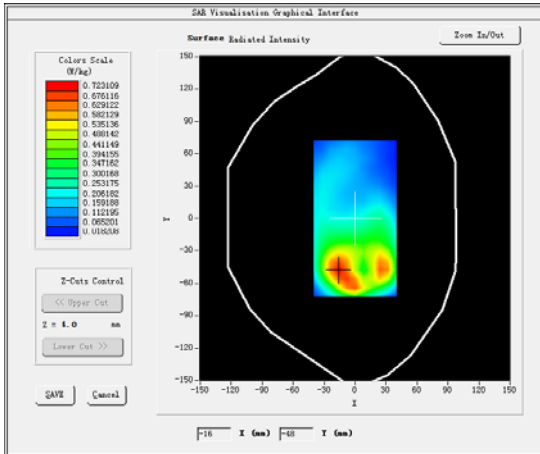
**MEASUREMENT 5**

Lower Band SAR (Channel 18700):

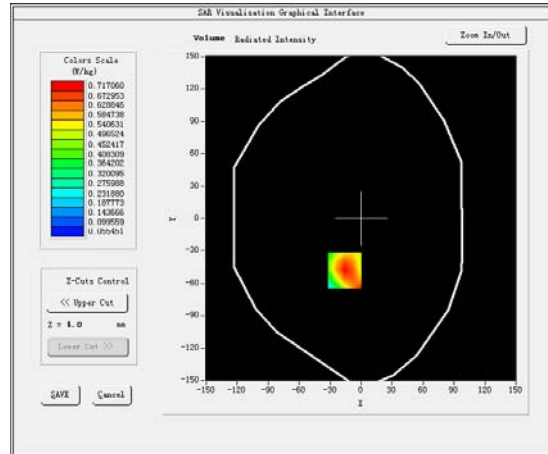
Date: 06/09/2016

Frequency (MHz)	1860.000000
Relative permittivity (real part)	52.142547
Relative permittivity (imaginary part)	13.770436
Conductivity (S/m)	1.501456
Variation (%)	-0.310000
Crest Factor	1.0
Probe Conversion factor	5.05
Area Scan	<u>dx=8mm dy=8mm, h= 5.00 mm</u>
ZoomScan	<u>5x5x7, dx=8mm dy=8mm</u> <u>dz=5mm, Complete/ndx=8mm dy=8mm, h=</u> <u>5.00 mm</u>
Phantom	Validation plane
Device Position	Body front(QPSK 1RB)
Band	LTE band 2

**SURFACE SAR**



**VOLUME SAR**



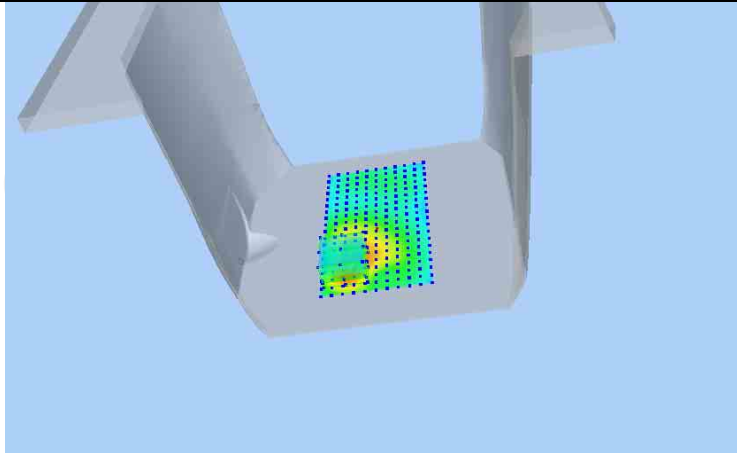
Maximum location: X=-16.00, Y=-48.00 SAR Peak: 1.15 W/kg

SAR 10g (W/Kg)

0.390227

SAR 1g (W/Kg)

0.683341



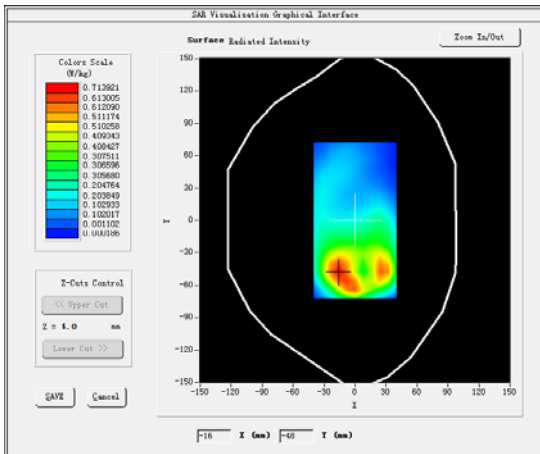
**MEASUREMENT 6**

Lower Band SAR (Channel 18700):

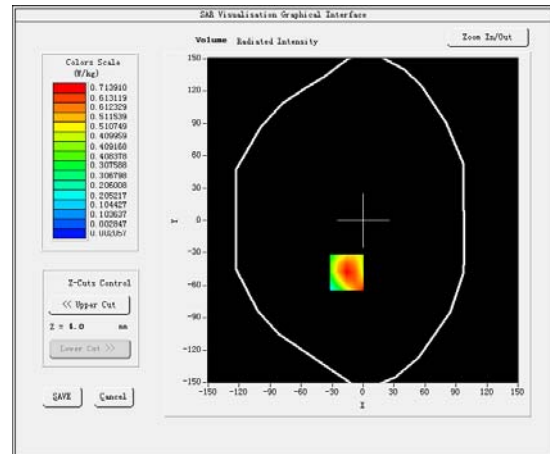
Date: 06/09/2016

<b>Frequency (MHz)</b>	1860.000000
<b>Relative permittivity (real part)</b>	52.142547
<b>Relative permittivity (imaginary part)</b>	13.770436
<b>Conductivity (S/m)</b>	1.501456
<b>Variation (%)</b>	0.330000
<b>Crest Factor</b>	1.0
<b>Probe Conversion factor</b>	5.05
<b>Area Scan</b>	<u>dx=8mm dy=8mm, h= 5.00 mm</u>
<b>ZoomScan</b>	<u>5x5x7, dx=8mm dy=8mm</u> <u>dz=5mm, Complete/ndx=8mm dy=8mm, h=</u> <u>5.00 mm</u>
<b>Phantom</b>	<u>Validation plane</u>
<b>Device Position</b>	<u>Body front Cheek(QPSK 50%RB)</u>
<b>Band</b>	<u>LTE band 2</u>

**SURFACE SAR**

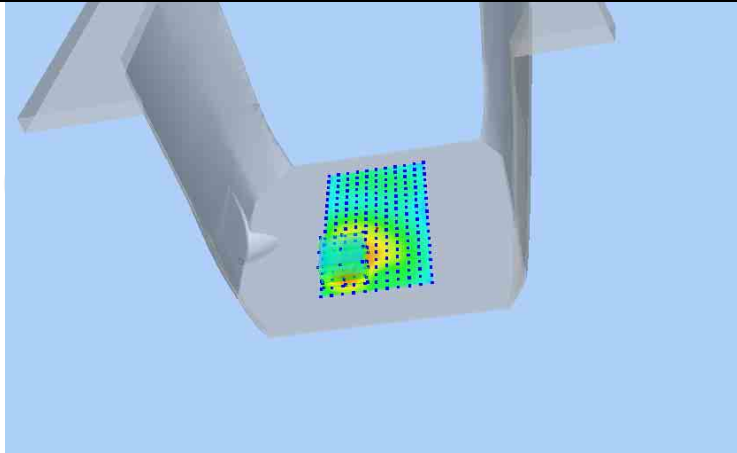


**VOLUME SAR**



**Maximum location: X=-16.00, Y=-48.00 SAR Peak: 1.04 W/kg**

<b>SAR 10g (W/Kg)</b>	0.324873
<b>SAR 1g (W/Kg)</b>	0.572547





LTE IV

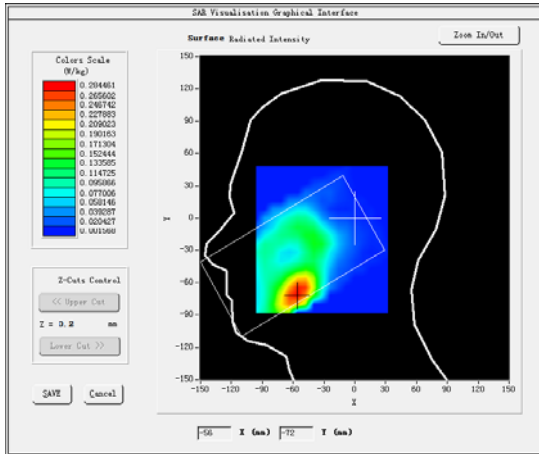
**MEASUREMENT 1**

Lower Band SAR (Channel 20050):

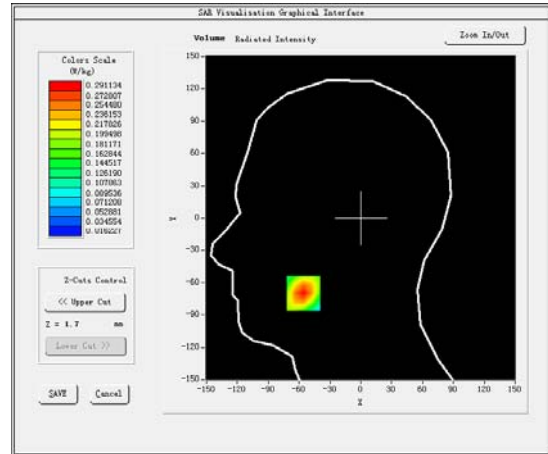
Date: 05/09/2016

Frequency (MHz)	1720.000000
Relative permittivity (real part)	39.111249
Relative permittivity (imaginary part)	12.468850
Conductivity (S/m)	1.340792
Variation (%)	-3.780000
Crest Factor	1.0
Probe Conversion factor	4.21
Area Scan	<u>dx=8mm dy=8mm, h= 5.00 mm</u>
ZoomScan	<u>5x5x7, dx=8mm dy=8mm</u> <u>dz=5mm, Complete/ndx=8mm dy=8mm, h=</u> <u>5.00 mm</u>
Phantom	<u>Right head</u>
Device Position	<u>Cheek</u>
Band	<u>LTE band 4</u>

**SURFACE SAR**



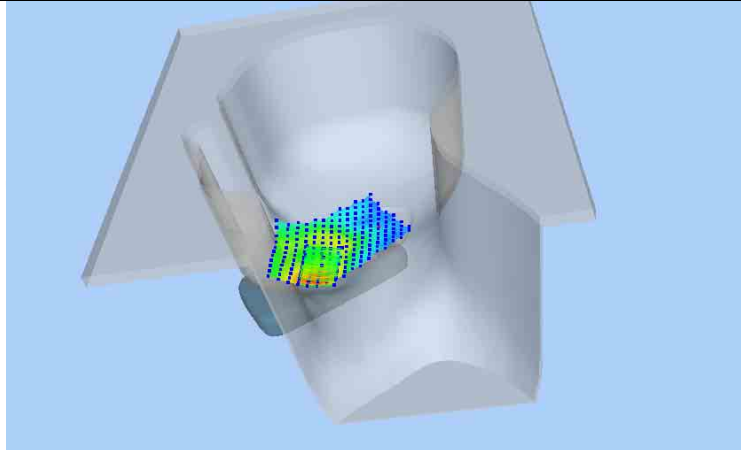
**VOLUME SAR**



Maximum location: X=-56.00, Y=-70.00 SAR Peak: 0.39 W/kg

SAR 10g (W/Kg) 0.173499

SAR 1g (W/Kg) 0.273824



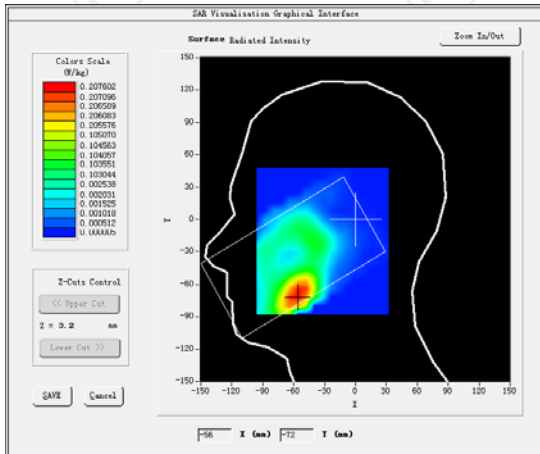
**MEASUREMENT 2**

Lower Band SAR (Channel 20050):

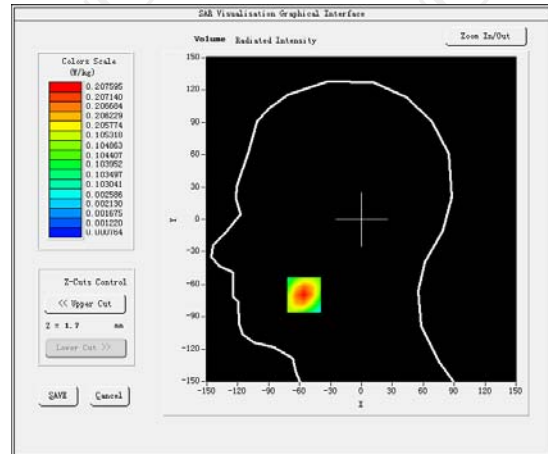
Date: 05/09/2016

<b>Frequency (MHz)</b>	1720.000000
<b>Relative permittivity (real part)</b>	39.111249
<b>Relative permittivity (imaginary part)</b>	12.468850
<b>Conductivity (S/m)</b>	1.340792
<b>Variation (%)</b>	2.140000
<b>Crest Factor</b>	1.0
<b>Probe Conversion factor</b>	4.33
<b>Area Scan</b>	<u>dx=8mm dy=8mm, h= 5.00 mm</u>
<b>ZoomScan</b>	<u>5x5x7, dx=8mm dy=8mm</u> <u>dz=5mm, Complete/ndx=8mm dy=8mm, h=</u> <u>5.00 mm</u>
<b>Phantom</b>	<u>Right head</u>
<b>Device Position</b>	<u>Cheek</u>
<b>Band</b>	<u>LTE band 4</u>

**SURFACE SAR**



**VOLUME SAR**



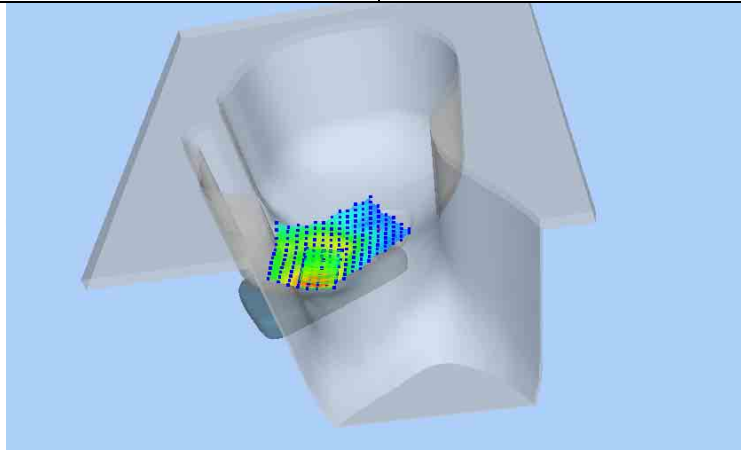
**Maximum location: X=-56.00, Y=-70.00 SAR Peak: 0.31 W/kg**

**SAR 10g (W/Kg)**

0.153267

**SAR 1g (W/Kg)**

0.201458



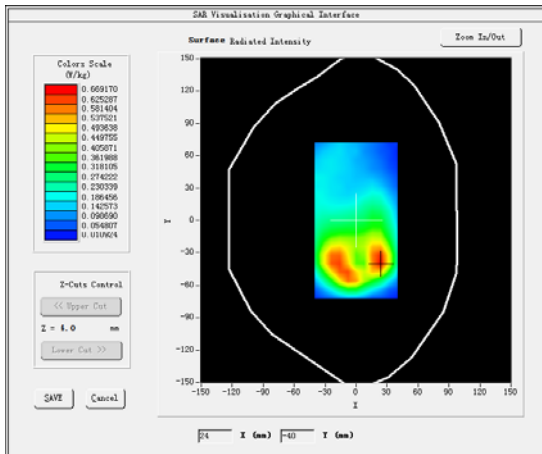
**MEASUREMENT 3**

Lower Band SAR (Channel 20050):

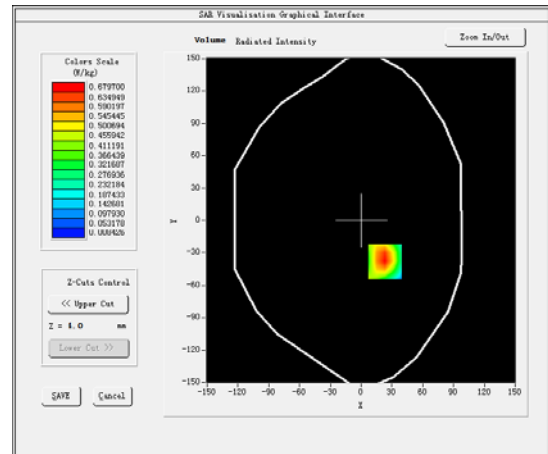
Date: 05/09/2016

<b>Frequency (MHz)</b>	1720.000000
<b>Relative permittivity (real part)</b>	53.341259
<b>Relative permittivity (imaginary part)</b>	12.468850
<b>Conductivity (S/m)</b>	1.492541
<b>Variation (%)</b>	1.130000
<b>Crest Factor</b>	1.0
<b>Probe Conversion factor</b>	4.33
<b>Area Scan</b>	<u>dx=8mm dy=8mm, h= 5.00 mm</u>
<b>ZoomScan</b>	<u>5x5x7,dx=8mm dy=8mm</u> <u>dz=5mm,Complete/ndx=8mm dy=8mm, h=</u> <u>5.00 mm</u>
<b>Phantom</b>	<u>Validation plane</u>
<b>Device Position</b>	<u>Body back</u>
<b>Band</b>	<u>LTE band 4</u>

**SURFACE SAR**

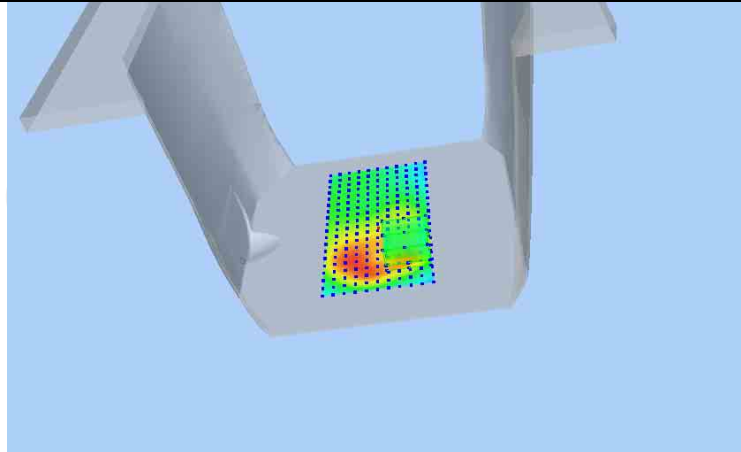


**VOLUME SAR**



**Maximum location: X=23.00, Y=-38.00 SAR Peak: 1.29 W/kg**

<b>SAR 10g (W/Kg)</b>	0.307046
<b>SAR 1g (W/Kg)</b>	0.648106



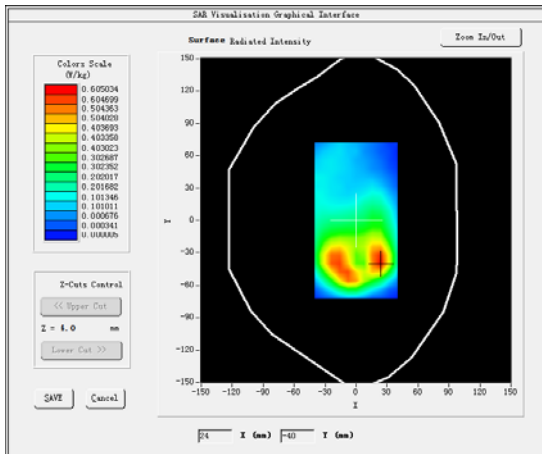
**MEASUREMENT 4**

Lower Band SAR (Channel 20050):

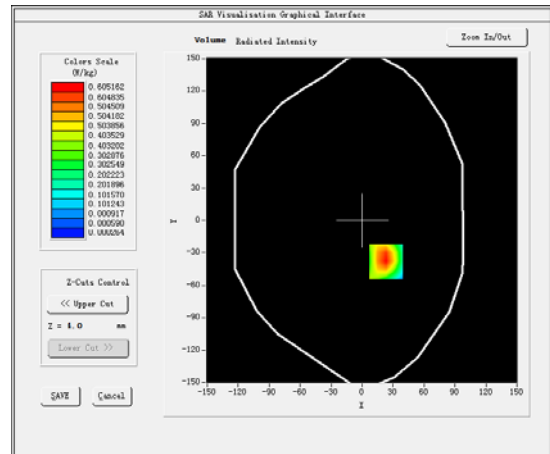
Date: 05/09/2016

Frequency (MHz)	1720.000000
Relative permittivity (real part)	53.341259
Relative permittivity (imaginary part)	12.468850
Conductivity (S/m)	1.492541
Variation (%)	2.330000
Crest Factor	1.0
Probe Conversion factor	4.33
Area Scan	<u>dx=8mm dy=8mm, h= 5.00 mm</u>
ZoomScan	<u>5x5x7, dx=8mm dy=8mm</u> <u>dz=5mm, Complete/ndx=8mm dy=8mm, h=</u> <u>5.00 mm</u>
Phantom	<u>Validation plane</u>
Device Position	<u>Body back</u>
Band	<u>LTE band 4</u>

**SURFACE SAR**

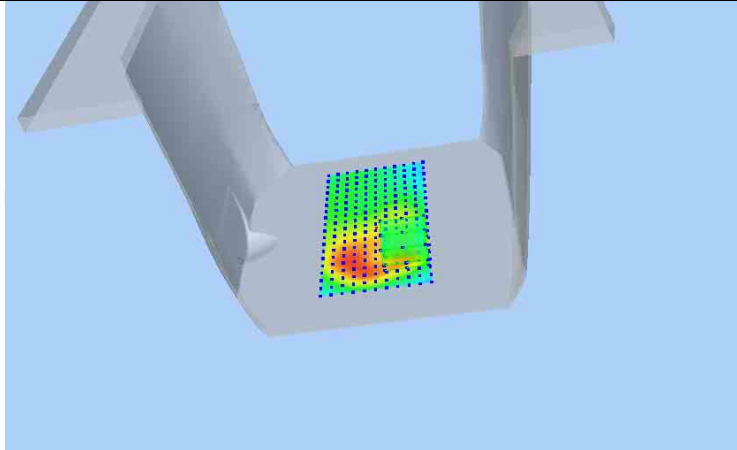


**VOLUME SAR**



Maximum location: X=23.00, Y=-38.00 SAR Peak: 1.03 W/kg

SAR 10g (W/Kg)	0.312587
SAR 1g (W/Kg)	0.541587



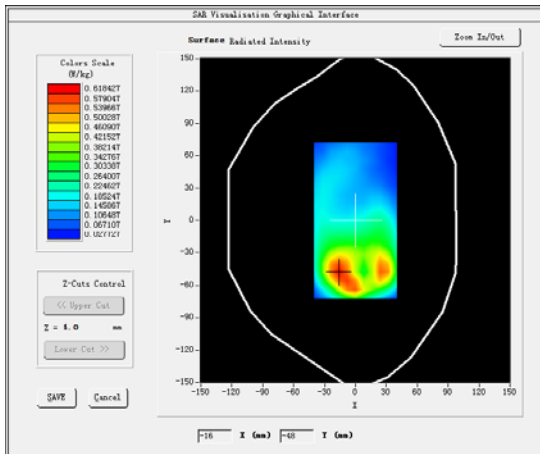
**MEASUREMENT 5**

Lower Band SAR (Channel 20050):

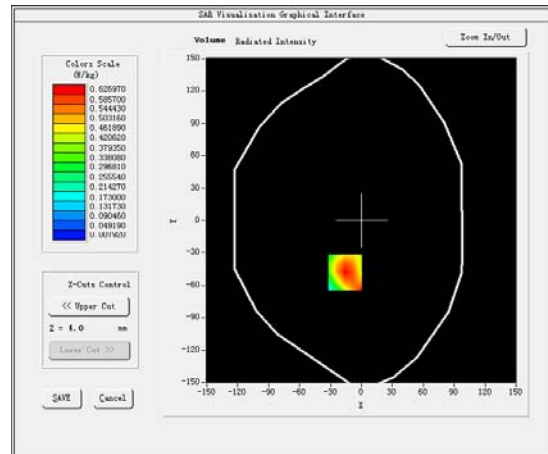
Date: 05/09/2016

<b>Frequency (MHz)</b>	1720.000000
<b>Relative permittivity (real part)</b>	53.341259
<b>Relative permittivity (imaginary part)</b>	12.468850
<b>Conductivity (S/m)</b>	1.492541
<b>Variation (%)</b>	-0.650000
<b>Crest Factor</b>	1.0
<b>Probe Conversion factor</b>	4.33
<b>Area Scan</b>	<u>dx=8mm dy=8mm, h= 5.00 mm</u>
<b>ZoomScan</b>	<u>5x5x7, dx=8mm dy=8mm</u> <u>dz=5mm, Complete/ndx=8mm dy=8mm, h=</u> <u>5.00 mm</u>
<b>Phantom</b>	<u>Validation plane</u>
<b>Device Position</b>	<u>Body front</u>
<b>Band</b>	<u>LTE band 1</u>

**SURFACE SAR**



**VOLUME SAR**



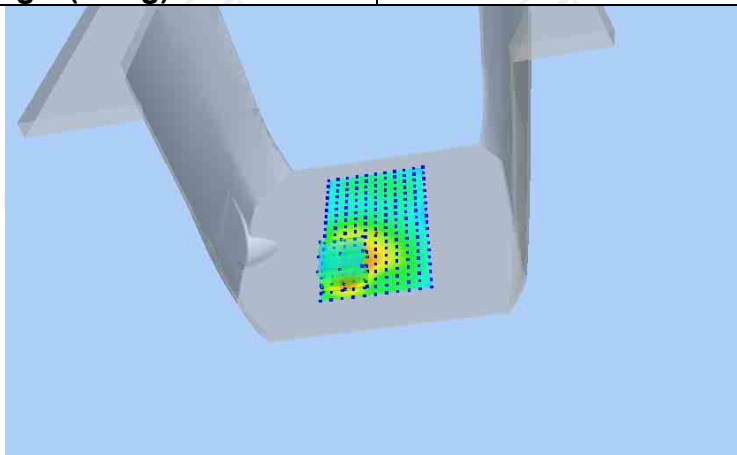
**Maximum location: X=-16.00, Y=-48.00 SAR Peak: 1.16 W/kg**

**SAR 10g (W/Kg)**

0.281875

**SAR 1g (W/Kg)**

0.594625



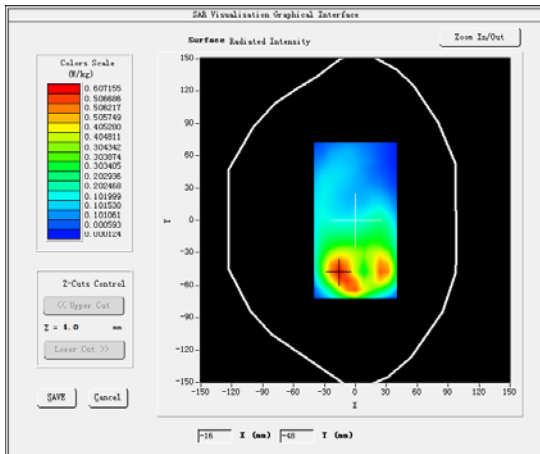
**MEASUREMENT 6**

Lower Band SAR (Channel 20050):

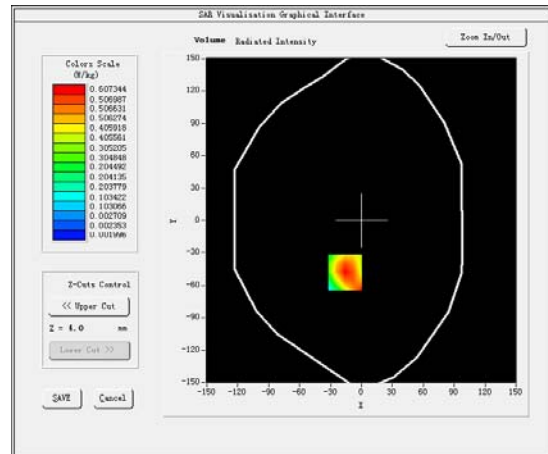
Date: 05/09/2016

<b>Frequency (MHz)</b>	1720.000000
<b>Relative permittivity (real part)</b>	53.341259
<b>Relative permittivity (imaginary part)</b>	12.468850
<b>Conductivity (S/m)</b>	1.492541
<b>Variation (%)</b>	0.330000
<b>Crest Factor</b>	1.0
<b>Probe Conversion factor</b>	4.33
<b>Area Scan</b>	<u>dx=8mm dy=8mm, h= 5.00 mm</u>
<b>ZoomScan</b>	<u>5x5x7, dx=8mm dy=8mm</u> <u>dz=5mm, Complete/ndx=8mm dy=8mm, h=</u> <u>5.00 mm</u>
<b>Phantom</b>	<u>Validation plane</u>
<b>Device Position</b>	<u>Body front</u>
<b>Band</b>	<u>LTE band 4</u>

**SURFACE SAR**



**VOLUME SAR**



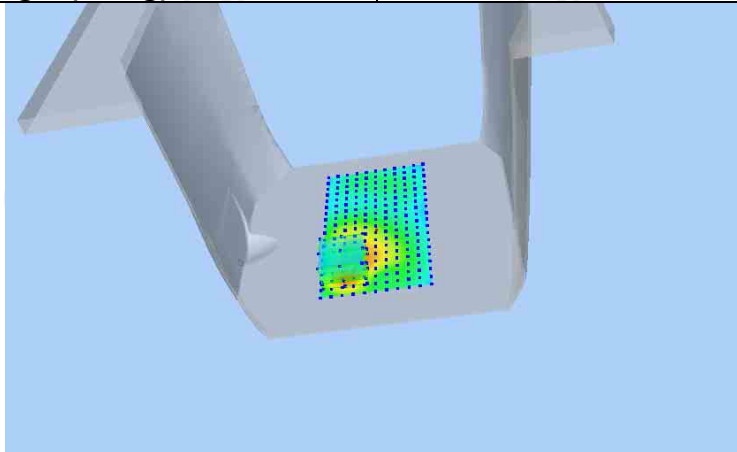
Maximum location: X=-16.00, Y=-48.00 SAR Peak: 1.02W/kg

**SAR 10g (W/Kg)**

0.281875

**SAR 1g (W/Kg)**

0.572547



LTE VII

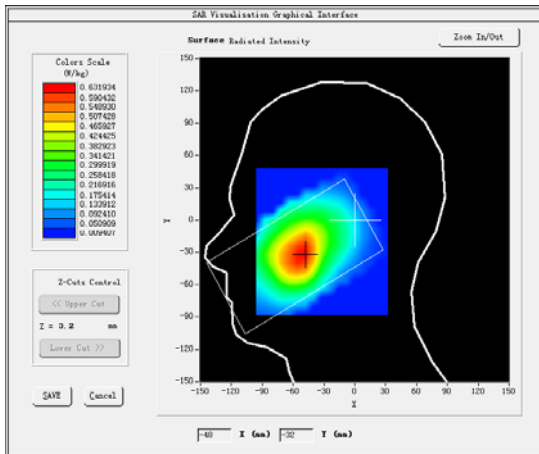
**MEASUREMENT 1**

Lower SAR (Channel 20850):

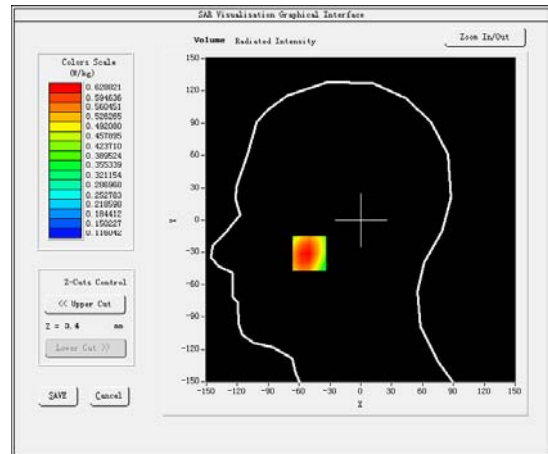
Date: 07/09/2016

<b>Frequency (MHz)</b>	2510.000000
<b>Relative permittivity (real part)</b>	37.723589
<b>Relative permittivity (imaginary part)</b>	13.671675
<b>Conductivity (S/m)</b>	1.867891
<b>Variation (%)</b>	-2.070000
<b>Crest Factor</b>	1.0
<b>Probe Conversion factor</b>	4.18
<b>Area Scan</b>	<u>dx=8mm dy=8mm, h= 5.00 mm</u>
<b>ZoomScan</b>	<u>5x5x7,dx=8mm dy=8mm</u> <u>dz=5mm,Complete/ndx=8mm dy=8mm, h=</u> <u>5.00 mm</u>
<b>Phantom</b>	<u>Left head</u>
<b>Device Position</b>	<u>Cheek(QPSK 1RB)</u>
<b>Band</b>	<u>LTE band 7</u>

**SURFACE SAR**

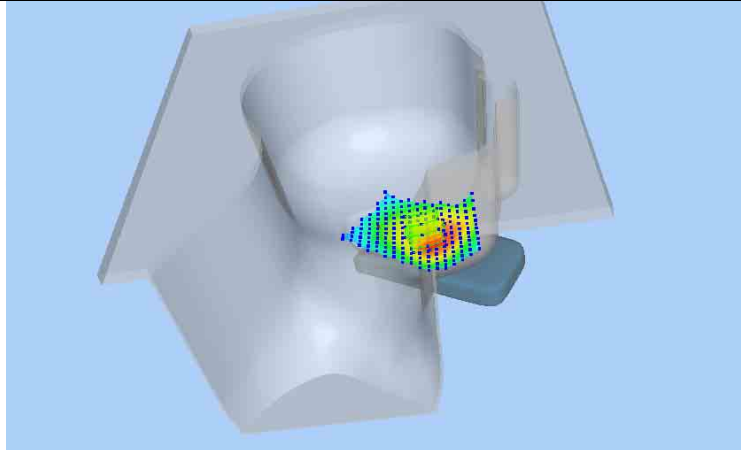


**VOLUME SAR**



**Maximum location: X=-50.00, Y=-31.00 SAR Peak: 0.67 W/kg**

<b>SAR 10g (W/Kg)</b>	0.252042
<b>SAR 1g (W/Kg)</b>	0.321644



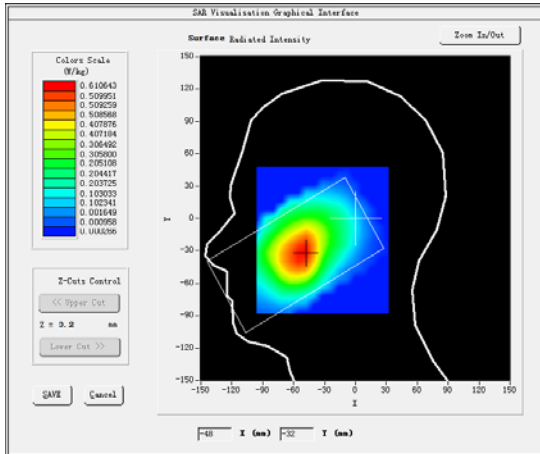
**MEASUREMENT 2**

Lower SAR (Channel 20850):

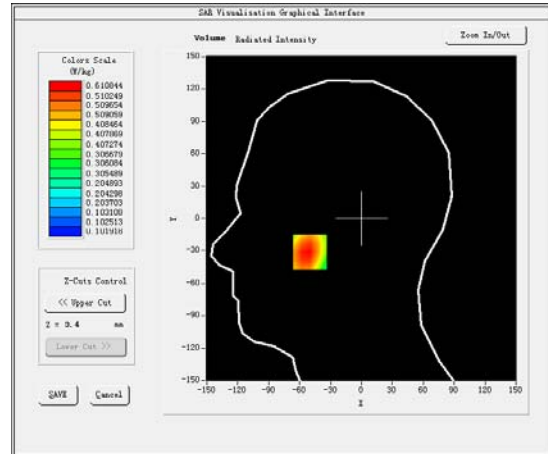
Date: 07/09/2016

<b>Frequency (MHz)</b>	2510.000000
<b>Relative permittivity (real part)</b>	37.723589
<b>Relative permittivity (imaginary part)</b>	13.671675
<b>Conductivity (S/m)</b>	1.867891
<b>Variation (%)</b>	0.400000
<b>Crest Factor</b>	1.0
<b>Probe Conversion factor</b>	4.31
<b>Area Scan</b>	<u>dx=8mm dy=8mm, h= 5.00 mm</u>
<b>ZoomScan</b>	<u>5x5x7,dx=8mm dy=8mm</u> <u>dz=5mm,Complete/ndx=8mm dy=8mm, h=</u> <u>5.00 mm</u>
<b>Phantom</b>	<u>Left head</u>
<b>Device Position</b>	<u>Cheek(QPSK 50%RB)</u>
<b>Band</b>	<u>LTE band 7</u>

**SURFACE SAR**

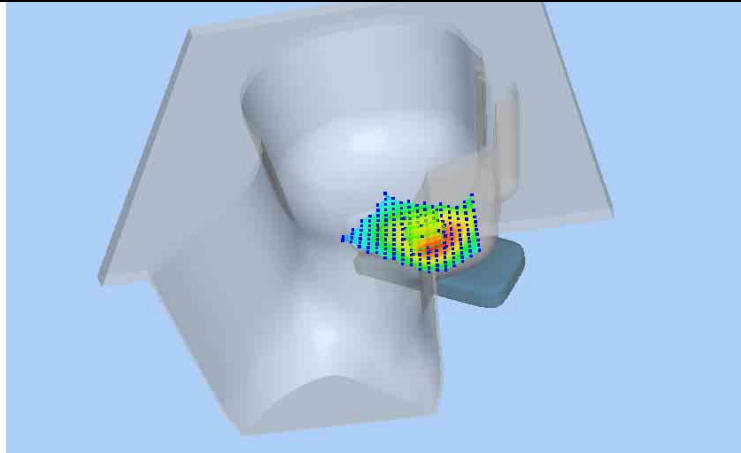


**VOLUME SAR**



**Maximum location: X=-50.00, Y=-31.00 SAR Peak: 0.60 W/kg**

<b>SAR 10g (W/Kg)</b>	0.187451
<b>SAR 1g (W/Kg)</b>	0.251254





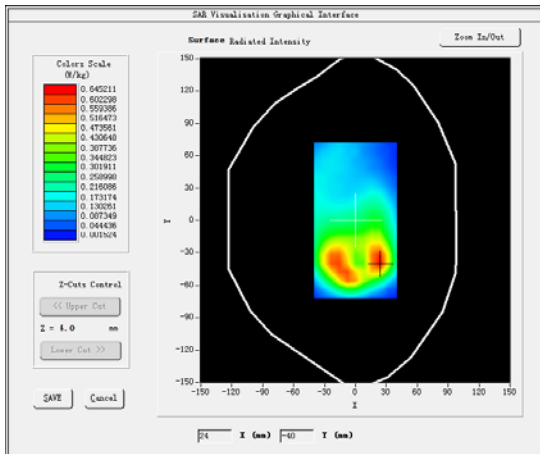
**MEASUREMENT 3**

Lower SAR (Channel 20850):

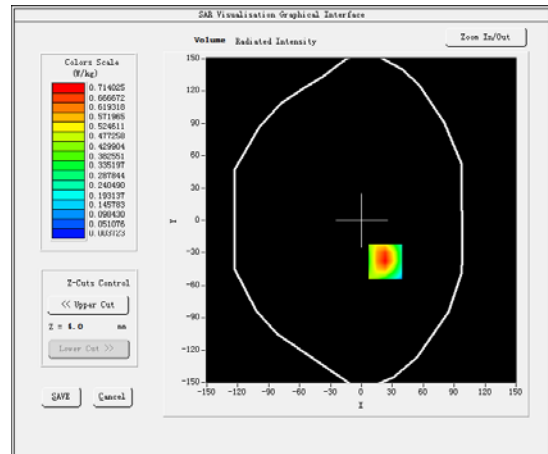
Date: 07/09/2016

<b>Frequency (MHz)</b>	2510.000000
<b>Relative permittivity (real part)</b>	53.482578
<b>Relative permittivity (imaginary part)</b>	13.671675
<b>Conductivity (S/m)</b>	2.052687
<b>Variation (%)</b>	0.280000
<b>Crest Factor</b>	1.0
<b>Probe Conversion factor</b>	4.31
<b>Area Scan</b>	<u>dx=8mm dy=8mm, h= 5.00 mm</u>
<b>ZoomScan</b>	<u>5x5x7, dx=8mm dy=8mm</u> <u>dz=5mm, Complete/ndx=8mm dy=8mm, h=</u> <u>5.00 mm</u>
<b>Phantom</b>	<u>Validation plane</u>
<b>Device Position</b>	<u>Body back(QPSK 1RB)</u>
<b>Band</b>	<u>LTE band 7</u>

**SURFACE SAR**

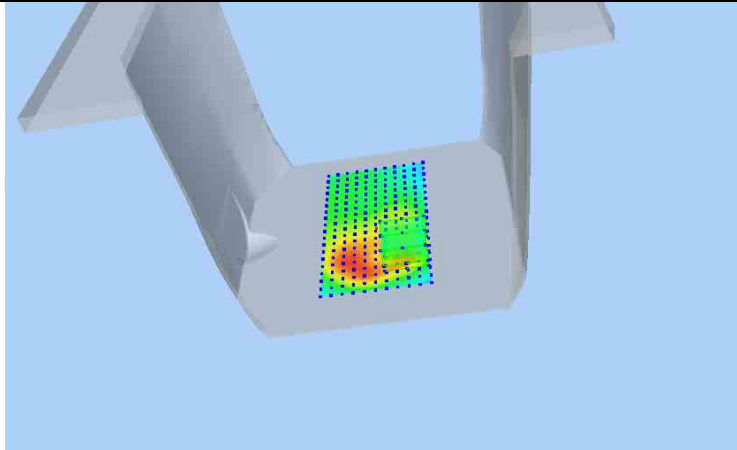


**VOLUME SAR**



**Maximum location: X=23.00, Y=-38.00 SAR Peak: 1.48 W/kg**

<b>SAR 10g (W/Kg)</b>	0.286984
<b>SAR 1g (W/Kg)</b>	0.686339



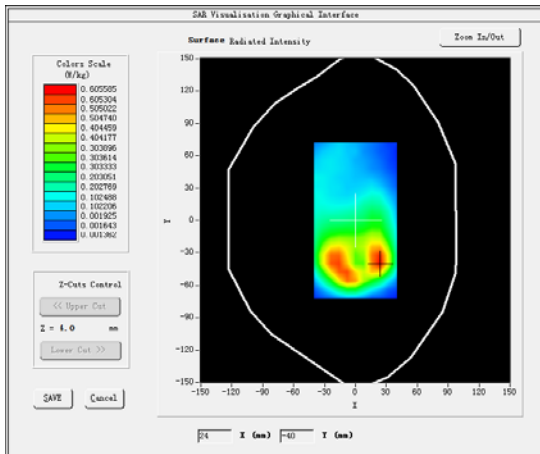
**MEASUREMENT 4**

Lower SAR (Channel 20850):

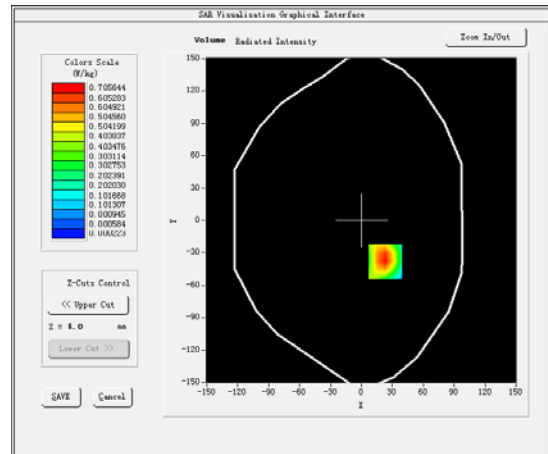
Date: 07/09/2016

<b>Frequency (MHz)</b>	2510.000000
<b>Relative permittivity (real part)</b>	53.482578
<b>Relative permittivity (imaginary part)</b>	13.671675
<b>Conductivity (S/m)</b>	2.052687
<b>Variation (%)</b>	0.690000
<b>Crest Factor</b>	1.0
<b>Probe Conversion factor</b>	4.31
<b>Area Scan</b>	<u>dx=8mm dy=8mm, h= 5.00 mm</u>
<b>ZoomScan</b>	<u>5x5x7, dx=8mm dy=8mm</u> <u>dz=5mm, Complete/ndx=8mm dy=8mm, h=</u> <u>5.00 mm</u>
<b>Phantom</b>	<u>Validation plane</u>
<b>Device Position</b>	<u>Body back(QPSK 50%RB)</u>
<b>Band</b>	<u>LTE band 7</u>

**SURFACE SAR**



**VOLUME SAR**



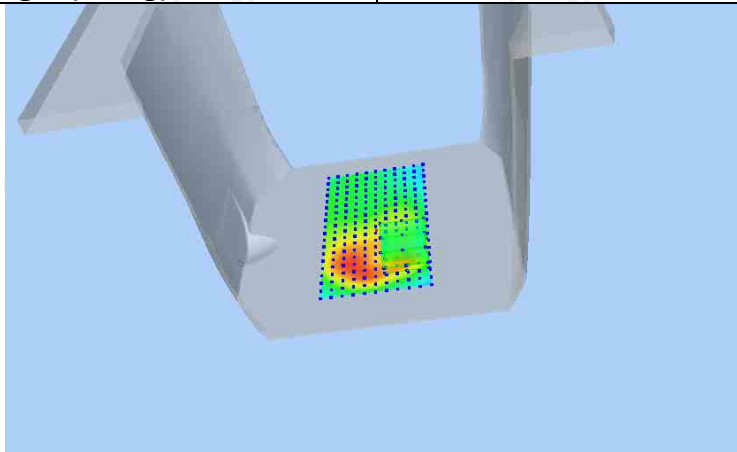
**Maximum location: X=23.00, Y=-38.00 SAR Peak: 1.37 W/kg**

**SAR 10g (W/Kg)**

0.282547

**SAR 1g (W/Kg)**

0.542587



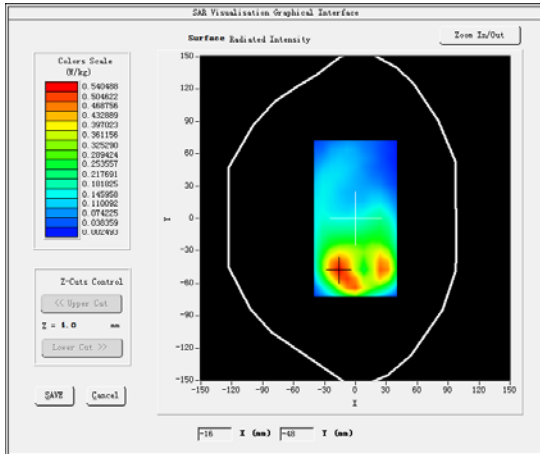
**MEASUREMENT 5**

Lower SAR (Channel 20850):

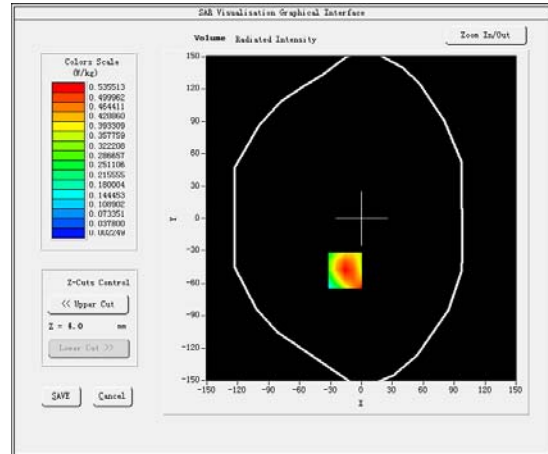
Date: 07/09/2016

<b>Frequency (MHz)</b>	2510.000000
<b>Relative permittivity (real part)</b>	53.482578
<b>Relative permittivity (imaginary part)</b>	13.671675
<b>Conductivity (S/m)</b>	2.052687
<b>Variation (%)</b>	-0.870000
<b>Crest Factor</b>	1.0
<b>Probe Conversion factor</b>	4.31
<b>Area Scan</b>	<u>dx=8mm dy=8mm, h= 5.00 mm</u>
<b>ZoomScan</b>	<u>5x5x7, dx=8mm dy=8mm</u> <u>dz=5mm, Complete/ndx=8mm dy=8mm, h=</u> <u>5.00 mm</u>
<b>Phantom</b>	<u>Validation plane</u>
<b>Device Position</b>	<u>Body front(QPSK 1RB)</u>
<b>Band</b>	<u>LTE band 7</u>

**SURFACE SAR**

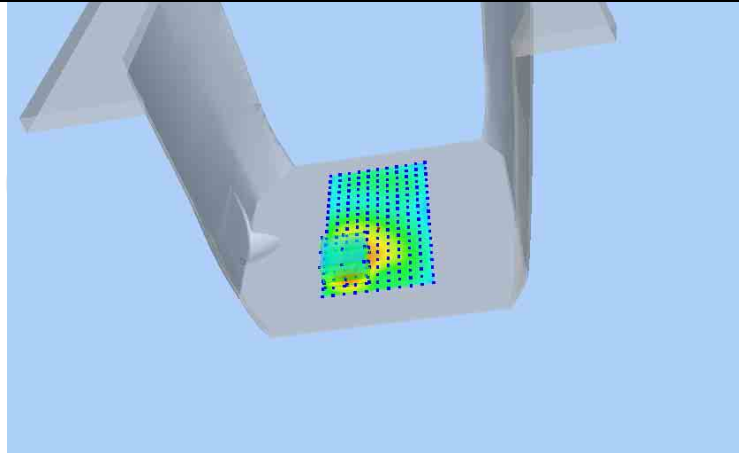


**VOLUME SAR**



**Maximum location: X=-16.00, Y=-48.00 SAR Peak: 1.12 W/kg**

<b>SAR 10g (W/Kg)</b>	0.225504
<b>SAR 1g (W/Kg)</b>	0.520751



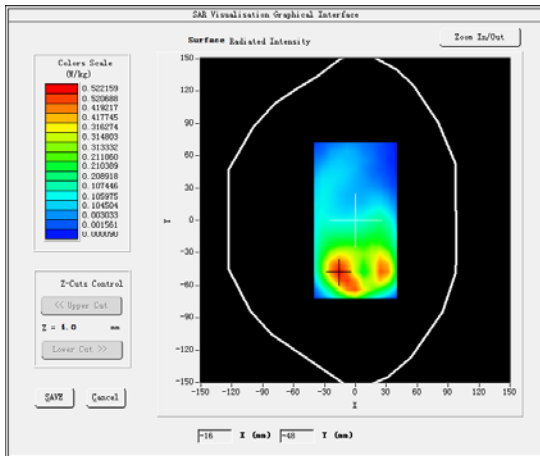
**MEASUREMENT 6**

Lower SAR (Channel 20850):

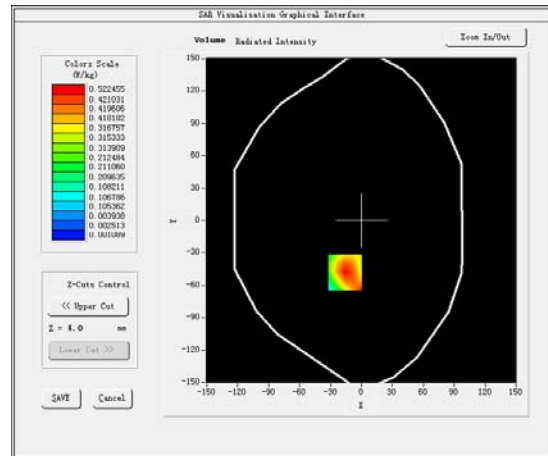
Date: 07/09/2016

<b>Frequency (MHz)</b>	2510.000000
<b>Relative permittivity (real part)</b>	53.482578
<b>Relative permittivity (imaginary part)</b>	13.671675
<b>Conductivity (S/m)</b>	2.052687
<b>Variation (%)</b>	-1.250000
<b>Crest Factor</b>	1.0
<b>Probe Conversion factor</b>	4.31
<b>Area Scan</b>	<u>dx=8mm dy=8mm, h= 5.00 mm</u>
<b>ZoomScan</b>	<u>5x5x7, dx=8mm dy=8mm</u> <u>dz=5mm, Complete/ndx=8mm dy=8mm, h=</u> <u>5.00 mm</u>
<b>Phantom</b>	<u>Validation plane</u>
<b>Device Position</b>	<u>Body front(QPSK 50%RB)</u>
<b>Band</b>	<u>LTE band 7</u>

**SURFACE SAR**

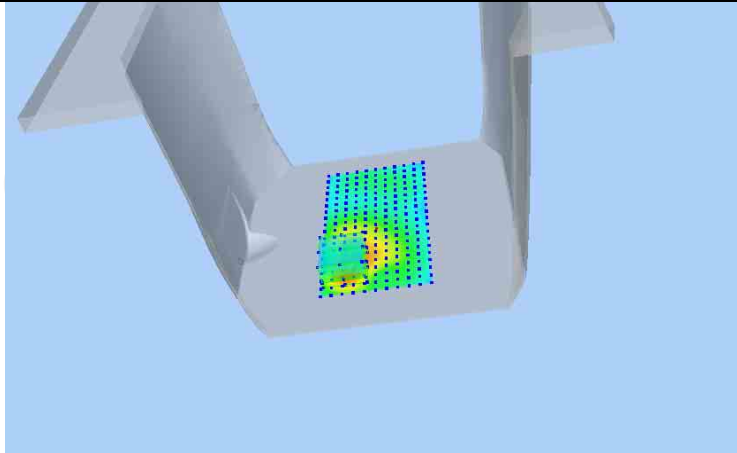


**VOLUME SAR**



**Maximum location: X=-16.00, Y=-48.00 SAR Peak: 1.01 W/kg**

<b>SAR 10g (W/Kg)</b>	0.214587
<b>SAR 1g (W/Kg)</b>	0.490257



LTE XVII

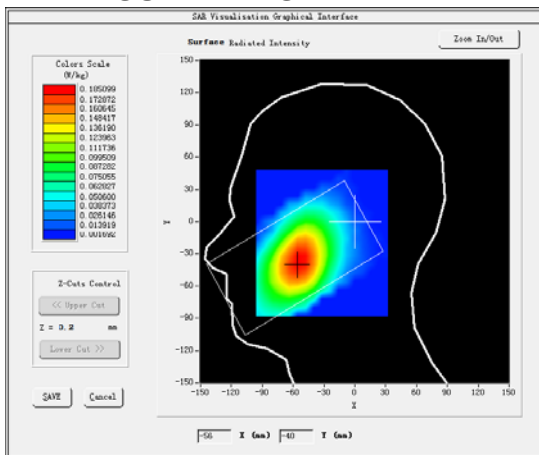
**MEASUREMENT 1**

Lower Band SAR (Channel 23780):

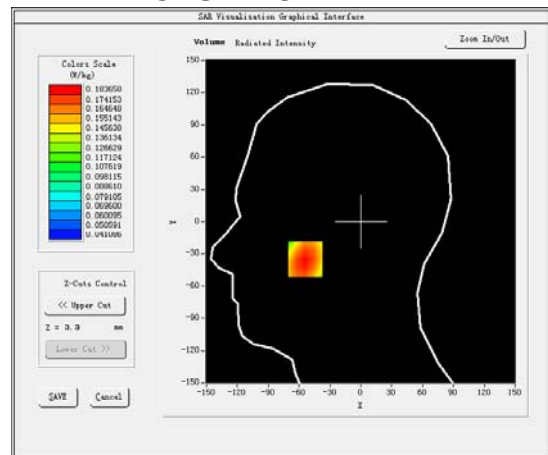
Date: 01/09/2016

<b>Frequency (MHz)</b>	709.000000
<b>Relative permittivity (real part)</b>	43.722892
<b>Relative permittivity (imaginary part)</b>	18.296230
<b>Conductivity (S/m)</b>	0.850939
<b>Variation (%)</b>	0.690000
<b>Crest Factor</b>	1.0
<b>Probe Conversion factor</b>	4.74
<b>Area Scan</b>	<u>dx=8mm dy=8mm, h= 5.00 mm</u>
<b>ZoomScan</b>	<u>5x5x7, dx=8mm dy=8mm</u> <u>dz=5mm, Complete/ndx=8mm dy=8mm, h=</u> <u>5.00 mm</u>
<b>Phantom</b>	<u>Right head</u>
<b>Device Position</b>	<u>Cheek</u>
<b>Band</b>	<u>LTE band 17</u>

**SURFACE SAR**



**VOLUME SAR**



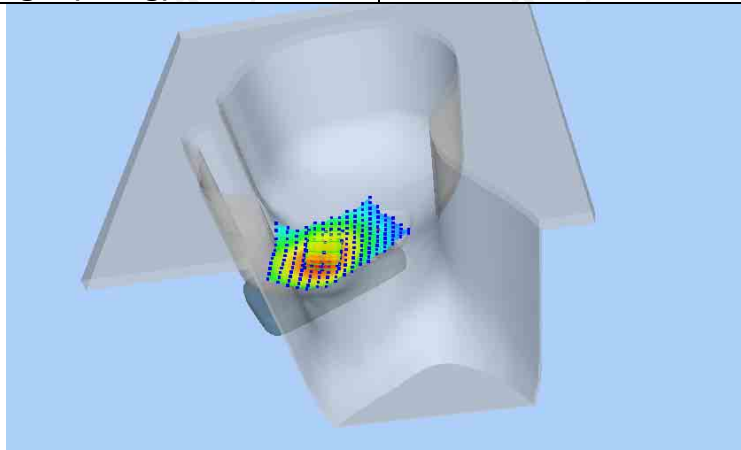
**Maximum location: X=-54.00, Y=-35.00 SAR Peak: 0.21 W/kg**

**SAR 10g (W/Kg)**

0.138245

**SAR 1g (W/Kg)**

0.178043



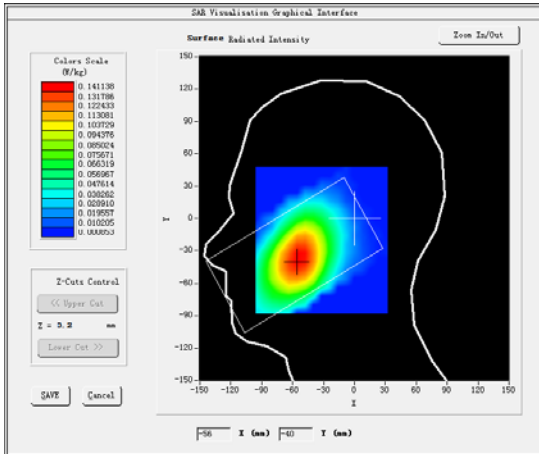
**MEASUREMENT 2**

Lower Band SAR (Channel 23780):

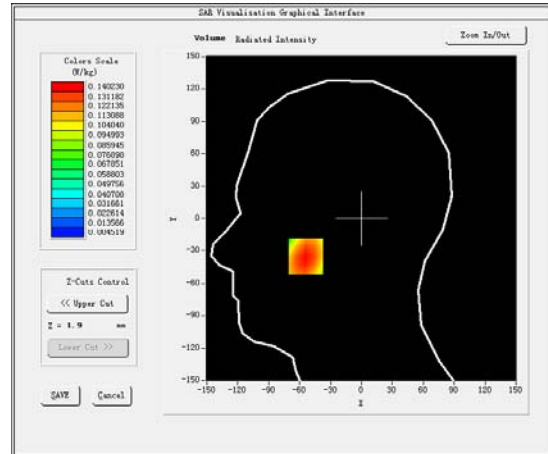
Date: 01/09/2016

Frequency (MHz)	709.000000
Relative permittivity (real part)	55.520245
Relative permittivity (imaginary part)	18.296230
Conductivity (S/m)	0.924587
Variation (%)	-0.290000
Crest Factor	1.0
Probe Conversion factor	4.74
Area Scan	<u>dx=8mm dy=8mm, h= 5.00 mm</u>
ZoomScan	<u>5x5x7, dx=8mm dy=8mm</u> <u>dz=5mm, Complete/ndx=8mm dy=8mm, h=</u> <u>5.00 mm</u>
Phantom	<u>Right head</u>
Device Position	<u>Cheek</u>
Band	<u>LTE band 17</u>

**SURFACE SAR**



**VOLUME SAR**



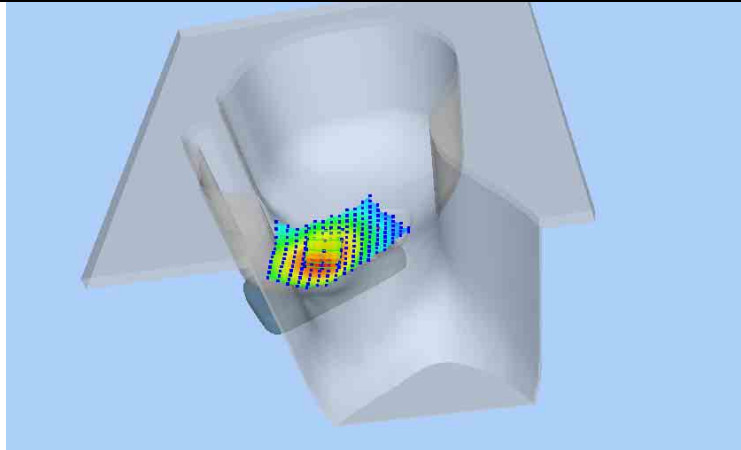
Maximum location: X=-54.00, Y=-35.00 SAR Peak: 0.19 W/kg

SAR 10g (W/Kg)

0.098547

SAR 1g (W/Kg)

0.144587



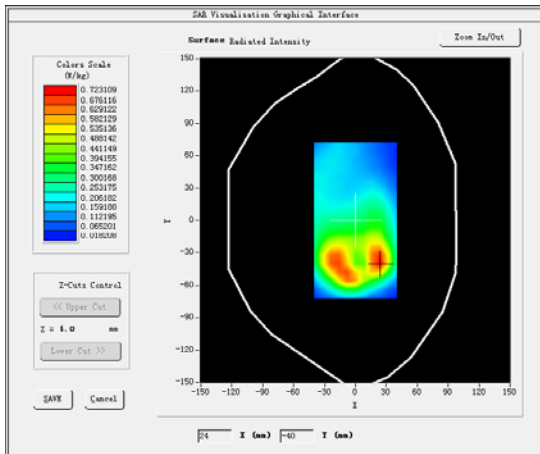
**MEASUREMENT 3**

Lower Band SAR (Channel 23780):

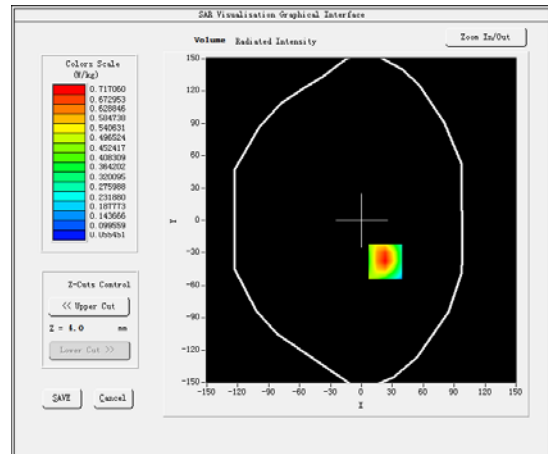
Date: 01/09/2016

<b>Frequency (MHz)</b>	709.000000
<b>Relative permittivity (real part)</b>	55.520245
<b>Relative permittivity (imaginary part)</b>	18.296230
<b>Conductivity (S/m)</b>	0.924587
<b>Variation (%)</b>	-0.140000
<b>Crest Factor</b>	1.0
<b>Probe Conversion factor</b>	4.85
<b>Area Scan</b>	<u>dx=8mm dy=8mm, h= 5.00 mm</u>
<b>ZoomScan</b>	<u>5x5x7, dx=8mm dy=8mm</u> <u>dz=5mm, Complete/ndx=8mm dy=8mm, h=</u> <u>5.00 mm</u>
<b>Phantom</b>	<u>Validation plane</u>
<b>Device Position</b>	<u>Body back</u>
<b>Band</b>	<u>LTE band 17</u>

**SURFACE SAR**



**VOLUME SAR**



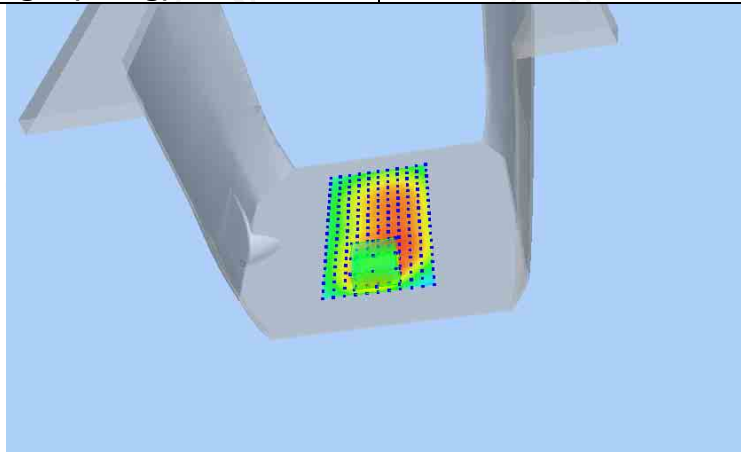
**Maximum location: X=23.00, Y=-38.00 SAR Peak: 0.54 W/kg**

**SAR 10g (W/Kg)**

0.297782

**SAR 1g (W/Kg)**

0.532256



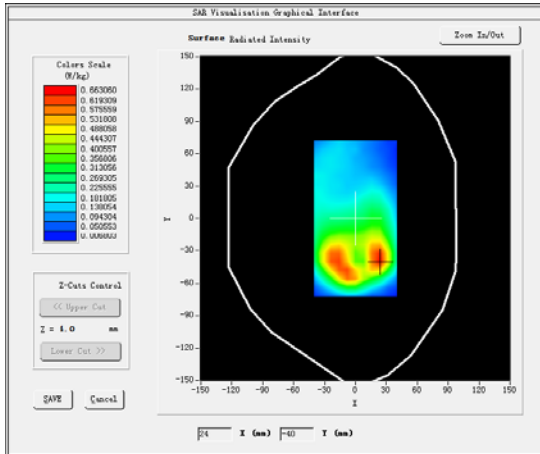
**MEASUREMENT 4**

Lower Band SAR (Channel 23780):

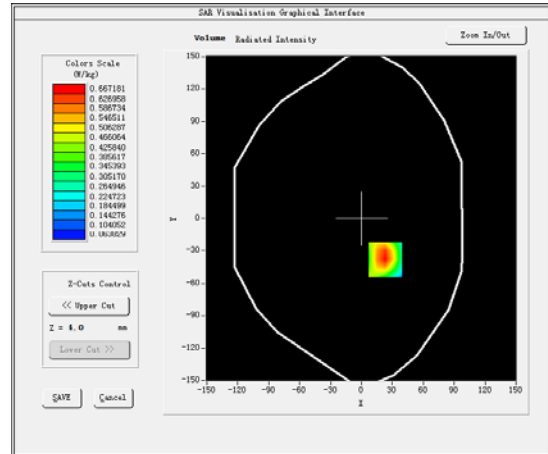
Date: 01/09/2016

<b>Frequency (MHz)</b>	709.000000
<b>Relative permittivity (real part)</b>	55.520245
<b>Relative permittivity (imaginary part)</b>	18.296230
<b>Conductivity (S/m)</b>	0.924587
<b>Variation (%)</b>	0.670000
<b>Crest Factor</b>	1.0
<b>Probe Conversion factor</b>	4.85
<b>Area Scan</b>	<u>dx=8mm dy=8mm, h= 5.00 mm</u>
<b>ZoomScan</b>	<u>5x5x7,dx=8mm dy=8mm</u> <u>dz=5mm,Complete/ndx=8mm dy=8mm, h=</u> <u>5.00 mm</u>
<b>Phantom</b>	<u>Validation plane</u>
<b>Device Position</b>	<u>Body back</u>
<b>Band</b>	<u>LTE band 17</u>

**SURFACE SAR**



**VOLUME SAR**



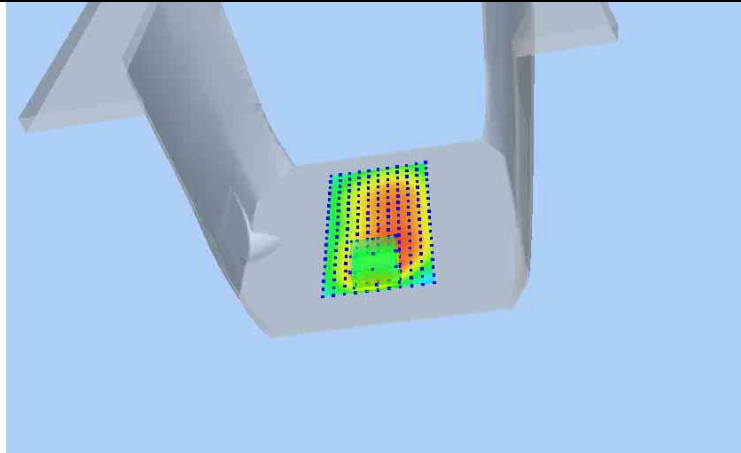
**Maximum location: X=23.00, Y=-38.00 SAR Peak: 0.49 W/kg**

**SAR 10g (W/Kg)**

0.215478

**SAR 1g (W/Kg)**

0.421587





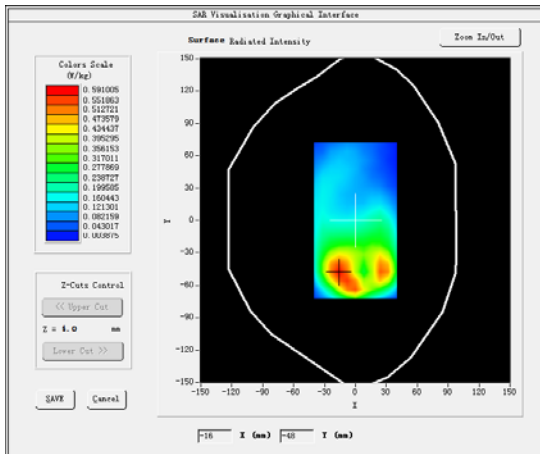
**MEASUREMENT 5**

Lower Band SAR (Channel 23780):

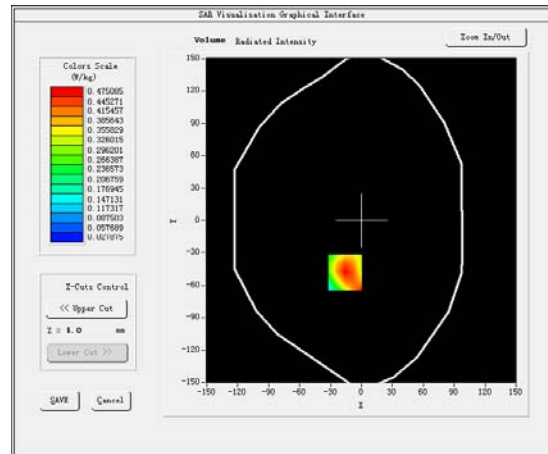
Date: 01/09/2016

Frequency (MHz)	709.000000
Relative permittivity (real part)	55.520245
Relative permittivity (imaginary part)	18.296230
Conductivity (S/m)	0.924587
Variation (%)	-0.110000
Crest Factor	1.0
Probe Conversion factor	4.85
Area Scan	<u>dx=8mm dy=8mm, h= 5.00 mm</u>
ZoomScan	<u>5x5x7, dx=8mm dy=8mm</u> <u>dz=5mm, Complete/ndx=8mm dy=8mm, h=</u> <u>5.00 mm</u>
Phantom	<u>Validation plane</u>
Device Position	<u>Body front</u>
Band	<u>LTE band 17</u>

**SURFACE SAR**



**VOLUME SAR**



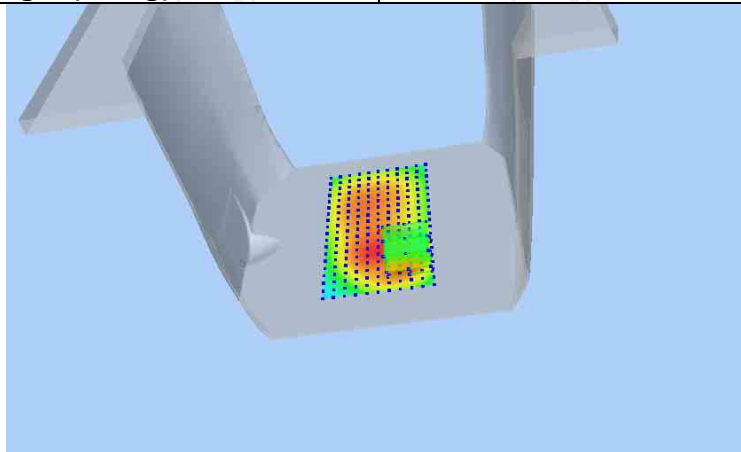
**Maximum location: X=-16.00, Y=-48.00 SAR Peak: 0.35 W/kg**

**SAR 10g (W/Kg)**

0.244105

**SAR 1g (W/Kg)**

0.327496



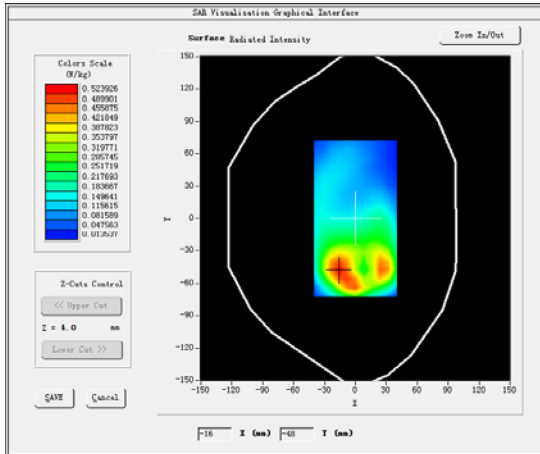
**MEASUREMENT 6**

Lower Band SAR (Channel 23780):

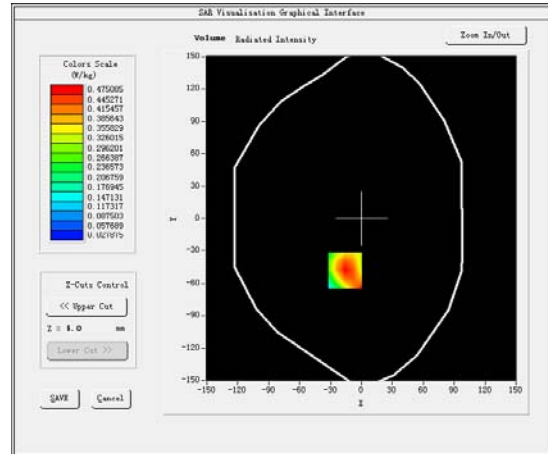
Date: 01/09/2016

<b>Frequency (MHz)</b>	709.000000
<b>Relative permittivity (real part)</b>	55.520254
<b>Relative permittivity (imaginary part)</b>	18.296230
<b>Conductivity (S/m)</b>	0.921458
<b>Variation (%)</b>	0.970000
<b>Crest Factor</b>	1.0
<b>Probe Conversion factor</b>	4.85
<b>Area Scan</b>	<u>dx=8mm dy=8mm, h= 5.00 mm</u>
<b>ZoomScan</b>	<u>5x5x7, dx=8mm dy=8mm</u> <u>dz=5mm, Complete/ndx=8mm dy=8mm, h=</u> <u>5.00 mm</u>
<b>Phantom</b>	<u>Validation plane</u>
<b>Device Position</b>	<u>Body front</u>
<b>Band</b>	<u>LTE band 17</u>

**SURFACE SAR**



**VOLUME SAR**



**Maximum location: X=-16.00, Y=-48.00 SAR Peak: 0.30W/kg**

**SAR 10g (W/Kg)**

0.154789

**SAR 1g (W/Kg)**

0.241254

